

Appendix A

Record of Agency Consultation

Appendix A. Summary of Agency Consultation

Agency	Information Source/Method and Date of Consultation	Information Obtained
Ausable Bayfield Conservation Authority (ABCA)	<ul style="list-style-type: none"> • Geoff Cade (Supervisor of Water and Planning) and Andrew Bicknell (Regulations Co-ordinator/Officer) • Meeting (ABCA offices) • August 12, 2010 	<ul style="list-style-type: none"> • ABCA provided constraints used to guide preliminary turbine layout, based on Land Information Ontario (LIO), Natural Heritage Information Centre (NHIC) and Natural Resources and Values Information System (NRVIS) databases. Request made to ABCA for aquatic data including water quality, benthic macroinvertebrates, fisheries, generic regulation mapping, stream flow, and any available relevant terrestrial information.
	<ul style="list-style-type: none"> • Geoff Cade, Andrew Bicknell and Tracy Boitson (GIS/CAD Information Systems Specialist) • Meeting (ABCA offices) • May 2, 2011 	<ul style="list-style-type: none"> • Preliminary discussion regarding the permitting process and previous background data request.
	<ul style="list-style-type: none"> • Tracy Boitson • Email correspondence • May 15, 2011 	<ul style="list-style-type: none"> • Received fish survey data and locations and associated data from ABCA: <ul style="list-style-type: none"> - ABCA Shape files (1999) - Regulation Limit - 1 m Contours - Natural Features - Watershed Boundary - ABCA ESAs - Waterflow with thermal regimes and names
	<ul style="list-style-type: none"> • Tracy Boitson • Email correspondence • July 20, 2011 	<ul style="list-style-type: none"> • Requested average annual high water mark data from ABCA. Advised that ABCA does not have this information.
	<ul style="list-style-type: none"> • Geoff Cade • Phone conversation • November 16, 2011 	<ul style="list-style-type: none"> • Conversation with ABCA regarding the CA regulation limits and required setbacks of infrastructure from watercourses. ABCA advised that setbacks required by REA may not be the same as watercourse setbacks determined by the CA.
	<ul style="list-style-type: none"> • Andrew Bicknell • Phone conversation • November 22, 2011 	<ul style="list-style-type: none"> • Follow-up discussion with A. Bicknell regarding CA setbacks from watercourses. Also discussed ideas to streamline the O. Reg 147/06 (Regulation of development, interference with wetlands and alterations to shorelines and watercourses) permitting process, such as issuing a blanket permit for the entire study.
	<ul style="list-style-type: none"> • Tracy Boitson • Email correspondence • November 30, 2011 	<ul style="list-style-type: none"> • Email to ABCA requesting year of drain classifications.
	<ul style="list-style-type: none"> • Tracy Boitson • Email correspondence • December 1, 2011 	<ul style="list-style-type: none"> • ABCA replied that drain classification data are from 1999.
	<ul style="list-style-type: none"> • Tracey McPherson • Email correspondence • March 12, 2012 	<ul style="list-style-type: none"> • Information request to ABCA for records for the updated Goshen Project Study Area: <ul style="list-style-type: none"> - 1 m Contours - Regulation limit - Fish records - Natural Features - Watershed Boundary - ABCA ESAs - Waterflow with thermal regimes and names • Information received from ABCA on March 26, 2012

Appendix A. Summary of Agency Consultation

Agency	Information Source/Method and Date of Consultation	Information Obtained
	<ul style="list-style-type: none"> • Andrew Bicknell • Meeting (ABCA office) • May 15, 2012 	<ul style="list-style-type: none"> • Request made for the ABCA floodline mapping for the Goshen Project Study Area • Received floodline mapping from ABCA on June 8, 2012
	<ul style="list-style-type: none"> • Tracey McPherson • Email correspondence • June 5, 2012 	<ul style="list-style-type: none"> • Email to ABCA asking for clarification with drain classifications provided in shapefiles. Specifically that: F is intermittent, U is unknown and T is tiled.
	<ul style="list-style-type: none"> • Tracey McPherson • Email correspondence • June 5, 2012 	<ul style="list-style-type: none"> • ABCA confirmed data assumptions from June 5, 2012 email is correct.
Ministry of Natural Resources (MNR) – Clinton Office	<ul style="list-style-type: none"> • Tara Lessard (Acting Area Biologist) • Phone conversation/email correspondence • September 7, 2010 	<ul style="list-style-type: none"> • Discussion regarding a blanket Scientific Collector's Permit (SCP) for each Project Study Area. MNR confirmed they would prefer a specific list of watercourses to be surveyed before a permit will be given. A SCP can be issued quickly, but Species-at-Risk (SAR) permits can take three (3) months to one (1) year to be developed and approved.
	<ul style="list-style-type: none"> • Tara Lessard (Acting Area Biologist) • Email correspondence • September 7, 2010 	<ul style="list-style-type: none"> • T. Lessard followed up with an email documenting the phone conversation held on September 7, 2010.
	<ul style="list-style-type: none"> • Tara Lessard • Phone conversation • December 15, 2010 	<ul style="list-style-type: none"> • MNR suggested that a specific list of water bodies/crossing locations be provided to MNR in order for them to provide fish records.
	<ul style="list-style-type: none"> • Tara Lessard • Email correspondence • December 20, 2010 	<ul style="list-style-type: none"> • Further to the phone conversation on December 15th, 2010, MNR suggested that AECOM provide MNR with a spreadsheet identifying locations that require fish records.
	<ul style="list-style-type: none"> • Tara Lessard • Email correspondence • February 7, 2011 	<ul style="list-style-type: none"> • Response to April Nix's email dated February 7th, 2011, indicating that Clinton office will be providing fish records not the Guelph District MNR office. MNR wanted to know if specific locations for fish records had been narrowed down instead of providing fish records for entire Goshen Project Study Area.
	<ul style="list-style-type: none"> • Tara Lessard • Email correspondence • March 11, 2011 	<ul style="list-style-type: none"> • Follow-up to correspondence on February 7, 2011 regarding fish records. MNR indicated that they need to make modifications to the current fish database before facilitating a fish information request of this size.
	<ul style="list-style-type: none"> • Chris Godwin (Acting Area Biologist) • Phone conversation • May 18, 2011 	<ul style="list-style-type: none"> • Requested the following data from MNR for the entire Project Study Area: <ul style="list-style-type: none"> - Fish records; - Water temperature; - Habitat mapping; - Benthic macroinvertebrate data; - SAR records – C. Godwin indicated that he could only release SAR records with permission from colleague Pud Hunter (SAR biologist Guelph); and, - Mussel records • MNR provided may of stream classification on May 20, 2011 and confirmed data requested on May 18, 2011 will be compiled for the Project Study Area. • Received fisheries records, fish habitat and benthic macroinvertebrate data and water quality information on June 20, 2011 in response to May 18, 2011 request.

Appendix A. Summary of Agency Consultation

Agency	Information Source/Method and Date of Consultation	Information Obtained
	<ul style="list-style-type: none"> • Chris Godwin • Email correspondence • October 24, 2011 	<ul style="list-style-type: none"> • Data request for Project Study Area. <ul style="list-style-type: none"> - Fish records; - Habitat mapping; - Benthic macroinvertebrate data; - Mussel records • Data received November 1, 2011
	<ul style="list-style-type: none"> • Chris Godwin • Email correspondence • November 1, 2011 	<ul style="list-style-type: none"> • Request for MNR fish records for the entire Project Study Area. • Data received November 11, 2011
	<ul style="list-style-type: none"> • Chris Godwin • Email correspondence • November 30, 2011 	<ul style="list-style-type: none"> • Email to MNR requesting source and date of drain classification information received from May 18th 2011 data request.
	<ul style="list-style-type: none"> • Chris Godwin • Email correspondence • December 1, 2011 	<ul style="list-style-type: none"> • MNR indicated that the Huron/Perth watercourse layer was built in 1996 and is based on the current and historical records at that time. This layer is periodically updated and is maintained by the Clinton area office.
	<ul style="list-style-type: none"> • Chris Godwin • Email correspondence • December 20, 2011 	<ul style="list-style-type: none"> • Fish record data request for updated Goshen Project Study Area • MNR advised that information from the December 20, 2011 data request from has been compiled and is in the mail. • Data received January 2012.
	<ul style="list-style-type: none"> • Chris Godwin • Email correspondence • April 5, 2012 	<ul style="list-style-type: none"> • Data request for MNR stream classification for Goshen Transmission Study Area • Data received April 20th, 2012 from April 5, 2012 data request
	<ul style="list-style-type: none"> • Chris Godwin • Email correspondence • April 18, 2012 	<ul style="list-style-type: none"> • Data request for Goshen Transmission Study Area. <ul style="list-style-type: none"> - Fish records; - Habitat mapping; - Benthic macroinvertebrate data; - Mussel records
	<ul style="list-style-type: none"> • Chris Godwin • Email correspondence • May 1, 2012 	<ul style="list-style-type: none"> • MNR advised that data has been compiled according to request from April 18 and is in the mail. Data received May 4, 2012.
MNR – Guelph Office	<ul style="list-style-type: none"> • April Nix (Renewable Energy Planning Ecologist) • Email correspondence • February 7, 2011 	<ul style="list-style-type: none"> • Email to MNR requesting fish records for the Goshen Project Study Area.
	<ul style="list-style-type: none"> • April Nix (Renewable Energy Planning Ecologist) • Email correspondence • February 7, 2011 	<ul style="list-style-type: none"> • Response to email from February 7, 2011, indicating that Tara Lessard will provide fish records.
	<ul style="list-style-type: none"> • April Nix (Renewable Energy Planning Ecologist) • Email correspondence • March 28, 2011 	<ul style="list-style-type: none"> • MNR confirmed the Great Lakes are not considered Lake Trout Lakes for the purpose of REA regulation. Only lakes listed in the Inland Ontario Lakes Designated for Lake Trout Management (May 2006) are considered Lake Trout Lakes for the regulation.

Appendix A. Summary of Agency Consultation

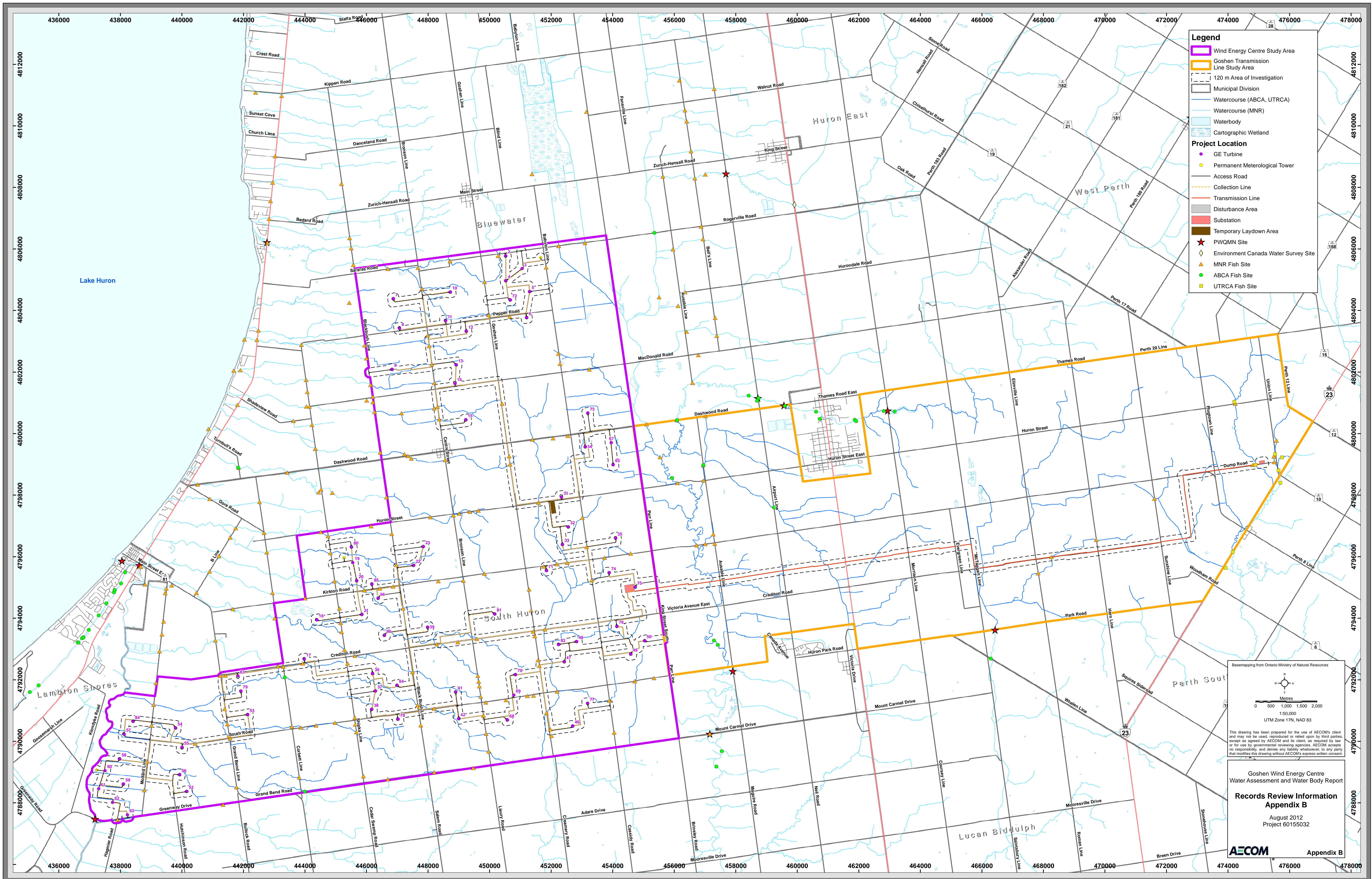
Agency	Information Source/Method and Date of Consultation	Information Obtained	
Ministry of the Environment (MOE)	<ul style="list-style-type: none"> • Shannon McNeil (Senior Project Evaluator - REA) • Phone conversation • March 28, 2011 	<ul style="list-style-type: none"> • Discussed the requirements for the water bodies field investigations, specifically regarding the need for water quality samples, stream flow surveys, fish community surveys and if MOE requires a field work plan. • MOE confirmed that laboratory analysis for water quality was not required. MOE does not require proponent to collect water velocity readings and that this can be done through records review. 	
	<ul style="list-style-type: none"> • Shannon McNeil • Email correspondence • March 31, 2011 	<ul style="list-style-type: none"> • Sent a summary of information exchanged in the previous phone conversation (28/03/11). 	
	<ul style="list-style-type: none"> • Shannon McNeil • Email correspondence • May 11, 2011 	<ul style="list-style-type: none"> • MOE confirmed that the Water Bodies work plan does not require MOE approval prior to conducting site investigations. 	
	<ul style="list-style-type: none"> • Shannon McNeil • Email correspondence • October 14, 2011 	<ul style="list-style-type: none"> • Requested advice from MOE regarding the protocol for the MOE water bodies Alternative Site Investigation. 	
	<ul style="list-style-type: none"> • Shannon McNeil • Phone conversation • October 20, 2011 	<ul style="list-style-type: none"> • Response from MOE regarding requirements for Alternative Site Investigations. MOE suggested that use of any records review data available, physical site investigations of sites upstream and downstream and studies from adjacent properties is acceptable to MOE. 	
	<ul style="list-style-type: none"> • Shannon McNeil • Email correspondence • November 3, 2011 	<ul style="list-style-type: none"> • Submitted protocol to MOE for Alternative Site Investigations for feedback on the proposed methodology. 	
	<ul style="list-style-type: none"> • Shannon McNeil • Email correspondence • November 16, 2011 	<ul style="list-style-type: none"> • Summary of discussions regarding Alternative Site Investigations from previous email correspondence (Oct 14th, 2011) and phone conversation (20th October 2011) was documented through email. MOE confirmed records were accurate representation of discussion. 	
	<ul style="list-style-type: none"> • Shannon McNeil • Phone conversation • November 29, 2011 	<ul style="list-style-type: none"> • Discussion regarding classification of certain water features (i.e., ponds that are considered REA) and requirements for Water Bodies Report. MOE suggested that it is up to NextEra as to how the ponds should be classified. They recommended that on-line ponds should be treated as REA water bodies given that they are connected to watercourses. 	
	Huron County	<ul style="list-style-type: none"> • Claire Dodds (Municipality of South Huron) • Email correspondence • November 1, 2011 	<ul style="list-style-type: none"> • Email to the Municipality to request water bodies information relevant to the project. The Municipality suggested contacting ABCA for this information.
	Municipality of Bluewater	<ul style="list-style-type: none"> • Arlene Parker (Municipality of Bluewater) • Email correspondence • November 1, 2011 	<ul style="list-style-type: none"> • Email to the Municipality of Bluewater to request water bodies information relevant to the project. The Municipality suggested contacting the MNR and the ABCA for this information. Any information on natural environments, floodplains and wellhead protection areas can be found in the Municipality's Official Plan.
<ul style="list-style-type: none"> • Arlene Parker • Email correspondence • November 24, 2011 		<ul style="list-style-type: none"> • Data request from the Municipality for municipal drain information for the entire study area. 	
<ul style="list-style-type: none"> • Arlene Parker • Phone conversation • November 28, 2011 		<ul style="list-style-type: none"> • In response to email from November 24th, Municipality of Bluewater (Arlene Parker) provided a website where the municipal drain mapping could be obtained. 	
<ul style="list-style-type: none"> • Arlene Parker • Email correspondence • March 12, 2012 		<ul style="list-style-type: none"> • Email to the municipality for municipal drain information for the updated Goshen study area. 	
<ul style="list-style-type: none"> • Arlene Parker • Email correspondence 		<ul style="list-style-type: none"> • Municipality suggested consultation with MNR, ABCA to obtain natural heritage information and that the Municipality has previously provided municipal drainage information that will cover this study area. 	

Appendix A. Summary of Agency Consultation

Agency	Information Source/Method and Date of Consultation	Information Obtained
Municipality of South Huron	<ul style="list-style-type: none"> • April 24, 2012 	
	<ul style="list-style-type: none"> • Trista Russel • Email correspondence • November 1, 2011 	<ul style="list-style-type: none"> • Email to the Municipality of South Huron to request for water bodies information relevant to the project.
	<ul style="list-style-type: none"> • Trista Russel • Email correspondence • November 24, 2011 	<ul style="list-style-type: none"> • Second email to the Municipality of South Huron to request for water bodies information relevant to the project.
Upper Thames Conservation Authority (UTRCA)	<ul style="list-style-type: none"> • Trista Russel • Email correspondence • November 29, 2011 	<ul style="list-style-type: none"> • The Municipality indicates that there are several municipal drains within the Goshen study area and recommended contacting Huron County for their electronic information regarding these drains.
	<ul style="list-style-type: none"> • C Harrington and T Chapman • Email correspondence • March 13, 2012 	<ul style="list-style-type: none"> • Information request for Natural Heritage information, regulation limit mapping and fish records for the entire study area.
	<ul style="list-style-type: none"> • Karen Winfield • Email correspondence • March 16, 2012 	<ul style="list-style-type: none"> • UTRCA provided comments and Regulation limit (O. Reg 157/06) mapping for the Goshen Transmission study area. UTRCA said that given the broad study area they are unable to provide detailed technical comments at this time. They indicated that they can provide digital mapping with boundaries of natural heritage and natural hazard features. Outlined that permits may be required for works within their regulation limit under Ontario Regulation 157/06. Fish Creek is considered mainly warmwater and that fish and mussel records are available from their office.
	<ul style="list-style-type: none"> • Phil Simm • Email correspondence • April 16, 2012 	<ul style="list-style-type: none"> • Data request to UTRCA for digital shapefiles including boundaries for natural heritage features and hazards • UTRCA provided digital shapefiles on April 20th, 2012 in response to data request from April 16th, 2012.
	<ul style="list-style-type: none"> • Cathy Reeves, • Email correspondence • May 2, 2012 	<ul style="list-style-type: none"> • Data request for fish/mussel records and benthic data for the Project Study Area as outlined in email dated March 16, 2012. • Received information from May 2, 2012 data request, including fish and benthic invertebrate data, no mussel records were available.

Appendix B

Records Review Mapping



Basemapping from Ontario Ministry of Natural Resources

Metres
0 500 1,000 1,500 2,000
1:50,000
UTM Zone 17N, NAD 83

This drawing has been prepared for the use of AECOM's client and may not be used, reproduced or relied upon by third parties, except as agreed by AECOM and its client, as required by law or for use by governmental reviewing agencies. AECOM accepts no responsibility, and denies any liability whatsoever, to any party that modifies this drawing without AECOM's express written consent.

Goshen Wind Energy Centre
Water Assessment and Water Body Report

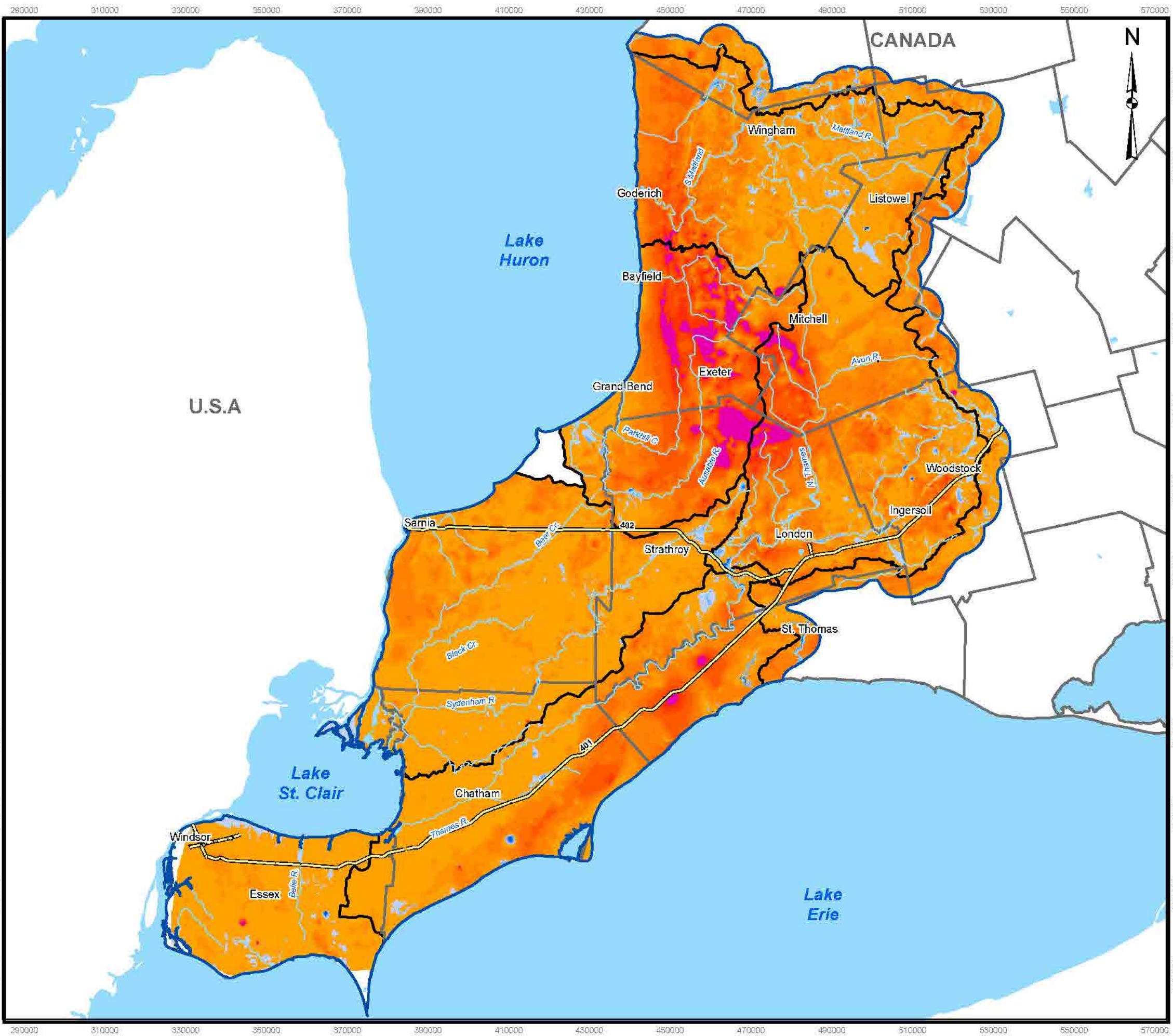
Records Review Information
Appendix B

August 2012
Project 60155032

AECOM Appendix B

Appendix C

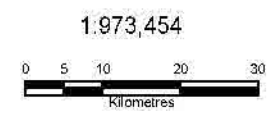
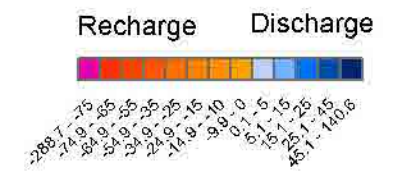
Estimated Zones of Potential
Recharge and Discharge Areas



Six Conservation Authorities Geological and Hydrogeological Model Project

Legend

- Conservation Area Boundaries
- County Boundaries
- ▣ Study Boundary
- == Major Highways
- Major Rivers
- Lakes



Disclaimer: This map is intended for illustrative purposes only. Figure is to be read in conjunction with the Six Conservation Authorities FEFLOW model report.
 Digital Mapping Sources: Base mapping features - Ministry of the Environment; Water well information - Ministry of the Environment.

Date: December, 2004



Figure 24: Recharge/Discharge

Map Projection: UTM NAD83 Zone 17