



24 September 2012

## HERITAGE ASSESSMENT REPORT

**NextEra Energy Canada, ULC  
Goshen Wind Energy Centre  
Municipalities of Bluewater  
and South Huron  
Huron County, Ontario**

ORIGINAL REPORT

**Submitted to:**

Mr. Marc Rose  
AECOM Canada Ltd.  
300 Town Centre Boulevard  
Markham, Ontario N1H 3X7  
Tel: (905) 477-8400 ext. 388 Fax: (905) 477-1456

**Report Number:** 10-1151-0201-3200-R01

**Distribution:**

3 Copies - AECOM Canada Ltd.  
1 Copy & 1 CD - Ministry of Tourism, Culture and Sport  
2 Copies - Golder Associates Ltd





## Table of Contents

<b>1.0 INTRODUCTION.....</b>	<b>1</b>
1.1 Project Summary .....	1
<b>2.0 METHODOLOGY.....</b>	<b>5</b>
2.1 Study Process .....	5
2.2 Regulatory Framework .....	6
2.2.1 Ontario Regulation 359/09 .....	6
2.2.2 Ontario Regulation 9/06 made under the Ontario Heritage Act.....	8
2.3 Public Consultation and Recognition .....	8
<b>3.0 LAND USE HISTORY .....</b>	<b>10</b>
3.1 Physical Setting .....	10
3.2 First Nations Occupation .....	12
3.3 Crown Survey .....	12
3.4 Early Settlement .....	13
3.5 Agriculture .....	16
3.6 Industry.....	18
3.7 Rural Churches and Schoolhouses .....	19
3.8 Transportation .....	19
3.8.2 Railways.....	20
3.9 Urban Places .....	21
3.9.1 Dashwood.....	21
3.9.2 Corbett.....	22
3.9.3 Mount Carmel .....	23
3.9.4 Crediton .....	24
3.9.5 Greenway.....	26
3.9.6 Khiva.....	27
3.9.7 Shipka.....	27
3.9.8 Harpley.....	28
3.9.9 Elimville.....	29



# HERITAGE ASSESSMENT REPORT GOSHEN WIND ENERGY CENTRE

3.9.10	Winchelsea .....	30
3.9.11	Farquhar .....	31
3.9.12	Woodham.....	31
3.9.13	Kirkton.....	31
<b>4.0</b>	<b>DESCRIPTION OF CULTURAL FEATURES .....</b>	<b>32</b>
4.1	Cultural Heritage Features at the Project Location .....	32
4.2	Cultural Heritage Landscapes at the Project Location .....	33
<b>5.0</b>	<b>ANALYSIS OF CULTURAL FEATURES .....</b>	<b>39</b>
5.1	Protected Properties.....	39
5.1.1	The Henry Eilber House – The Village Post Bed and Breakfast, 12 Victoria Street East, Crediton .....	40
5.2	Inventory of Cultural Features at the Project Location.....	41
5.3	Cultural Heritage Landscapes at the Project Location .....	42
5.4	Summary .....	43
5.4.1	Cultural Heritage Features .....	43
5.4.2	Cultural Heritage Landscapes .....	43
<b>6.0</b>	<b>IMPACT ASSESSMENT.....</b>	<b>44</b>
6.1	Potential Impacts .....	44
6.2	Cultural Heritage Features at the Project Location .....	45
6.3	Cultural Heritage Landscapes at the Project Location .....	45
<b>7.0</b>	<b>RECOMMENDATIONS.....</b>	<b>46</b>
<b>8.0</b>	<b>REFERENCES.....</b>	<b>47</b>
8.2	Online Material .....	49
8.3	Official Plan Material.....	50
8.4	Inventory Material .....	50

## TABLES

Table 1: Properties within the Goshen Wind Energy Centre, Huron County .....	10
<b>Table 2: O. Reg. 359/09, s. 19 .....</b>	<b>39</b>
Table 3: Evaluation of Cultural Heritage Value or Interest According to O.Reg. 9/06 .....	42
<b>Table 4: Potential Direct Impacts and Relevance to the Project .....</b>	<b>44</b>
<b>Table 5: Types of Potential Indirect Impacts and Relevance to the Project .....</b>	<b>44</b>



**FIGURES**

Figure 1: Study Area ..... 3  
Figure 2: Photo Directions..... 4  
Figure 3: Study Area, 1835 -1837 ..... 14  
Figure 4: Study Area, 1835 -1837 ..... 15  
Figure 5: The Village of Crediton, 1879..... 25  
Figure 6: Cultural Heritage Landscapes..... 35

**PLATES**

Plate 1: Intersection of Dashwood Main and Centre Streets in Dashwood, looking south east a large, newly renovated mult-unit residential building..... 22  
Plate 2: The intersection of Grand Bend Line and Corbett Road in Corbett, looking northeast..... 23  
Plate 3: Intersection of Crediton Road and Concession Road 7 in Crediton, looking east..... 24  
Plate 4: The intersection of Greenway Drive and Bullock Line in Greenway, looking northwest..... 26  
Plate 5: Intersection of Bronson Line and Crediton Road in Khiva, looking northeast..... 27  
Plate 6: Intersection of Crediton Road and Shipka Line in Shipka, looking northwest..... 28  
Plate 7: Intersection of Kirkton Road and Elimville Line in Elimville, looking south..... 29  
Plate 8: Intersection of Kirkton Road and Hern Line in Winchelsea, looking west..... 30  
Plate 9: Drainage ditch crossing beneath the Zurich Hensall Road between Parr Line and Babylon Line, looking south..... 34  
Plate 10: A corner of the Hay Swamp Complex at the intersection of Parr Line and Dashwood Road, part of the Ausable Bayfield Conservation Authority Forest, looking northeast..... 36  
Plate 11: Morrison Dam reservoir, east of Exeter, looking east from Morrison Line..... 36  
Plate 12: Morrison Dam, east of Exeter, looking downstream from Morrison Line..... 37  
Plate 13: Hydro corridor, looking south from Dashwood Road, between Goshen Line and Babylon Line..... 38  
Plate 14: The Henry Eilber House, 12 Victoria Street East, Crediton..... 41

**APPENDICES**

**APPENDIX A**

Cultural Heritage Inventory



## Personnel

<b>Project Manager</b>	Jeffrey Muir, B.A.
<b>Built Heritage Specialist</b>	Christopher Andreae, Ph.D., Associate
<b>Report Production</b>	Meaghan Rivard, M.A., Bode Morin, Ph.D.
<b>Graphics Production, GIS</b>	Ben Clark, B. A.
<b>Office/Field Assistants</b>	Stacey Carson, Amanda Laprise, B.A.
<b>Senior Review</b>	Christopher Andreae, Ph.D., Associate
<b>Proponent Contact</b>	Mr. Marc Rose, Senior Environmental Planner, AECOM Canada Ltd.; Thomas Bird, Environmental Services Project Manager NextEra Energy Canada, ULC



## Acknowledgements

**Ministry of Tourism, Culture  
and Sport**

Laura Hatcher, Heritage Planner

**Ontario Heritage Trust**

Sean Fraser, Manager, Acquisitions and Conservation Services

Jeremy Collins, Acquisitions Coordinator, Acquisitions and  
Conservation Services

**Huron County Museum  
and Archives**

Jenna Leifso, Archivist

**Huron County Historical Society  
Executive**

David Armstrong, President, Rhea Hamilton-Seeger, Elaine Snell, and  
Ted Turner

**Bayfield Historical Society**

Ralph Laviolette, Archivist

**Local Historian**

Alison Lobb

**Municipality of South Huron**

Trista Russell, B.A.

**Municipality of Bluewater**

Arlene Parker



## **1.0 INTRODUCTION**

This Heritage Assessment Report (the Report) has been prepared to provide information to the public, Aboriginal communities, municipalities and local authorities regarding the proposed Goshen Wind Energy Centre (the Project). The Report is a required component of an Application for a Renewable Energy Approval (REA application) under Ontario Regulation (O.Reg.) 359/09 made under the *Environmental Protection Act* (EPA). The Report, up until the time the formal REA application is submitted to the Director, is a draft document which may change in order to reflect revisions to the Project location or other aspects of the Project which are initiated by the Proponent, and in consideration of feedback received during the O.Reg. 359/09 consultation process.

Additional information about the Project can currently be found in other REA submission reports being prepared by AECOM Canada Ltd. (AECOM): the Construction Plan Report (AECOM, 2012a in progress), Design and Operations Report (AECOM, 2012b in progress), Decommissioning Plan Report (AECOM, 2012c in progress), and Project Description Report (AECOM, 2012d in progress).

### **1.1 Project Summary**

The Project consists of the site preparation, construction, operation, and decommissioning of a 63 turbine wind generating facility with a total installed nameplate capacity of 102 MW. The Project will be owned and operated by Varna Wind Inc., a wholly owned subsidiary of NextEra Energy Canada, ULC (NextEra Energy Canada) and will be located in the Municipalities of Bluewater and South Huron, Huron County, Ontario. The Project lifespan from obtaining the REA Approval to the end of Decommissioning is estimated to be 25 years.

The wind turbines will be 80 metres high to the rotor hub and will have a rotor diameter of 100 metres. The turbines will be construction on foundation consisting of a wooden frame, poured concrete and reinforced with steel rebar. The electrical collection system from each turbine to the step-up transformer station will be buried on private property adjacent to the turbine access road, where feasible. A 115 kV transmission line will be constructed from the step-up transformer station to the connection point with the Provincial electricity grid and will be located on private property, or within existing road right-of-ways, and will be either buried or mounted on existing hydro poles or mounted on new hydro poles consistent with existing infrastructure in the area (see Figure 1). The operation of the wind turbines will be monitored remotely from an operations centre. Once tested and commissioned, the turbines will require scheduled visits for maintenance during the Operations Phase. Maintenance will include complete inspection of the turbine's components and the tower, functionality testing, replacement of worn parts, bolt tightening and lubrication of moving parts. Routine preventative maintenance activities will be scheduled at 6 month intervals, with specific maintenance tasks scheduled for each interval.



---

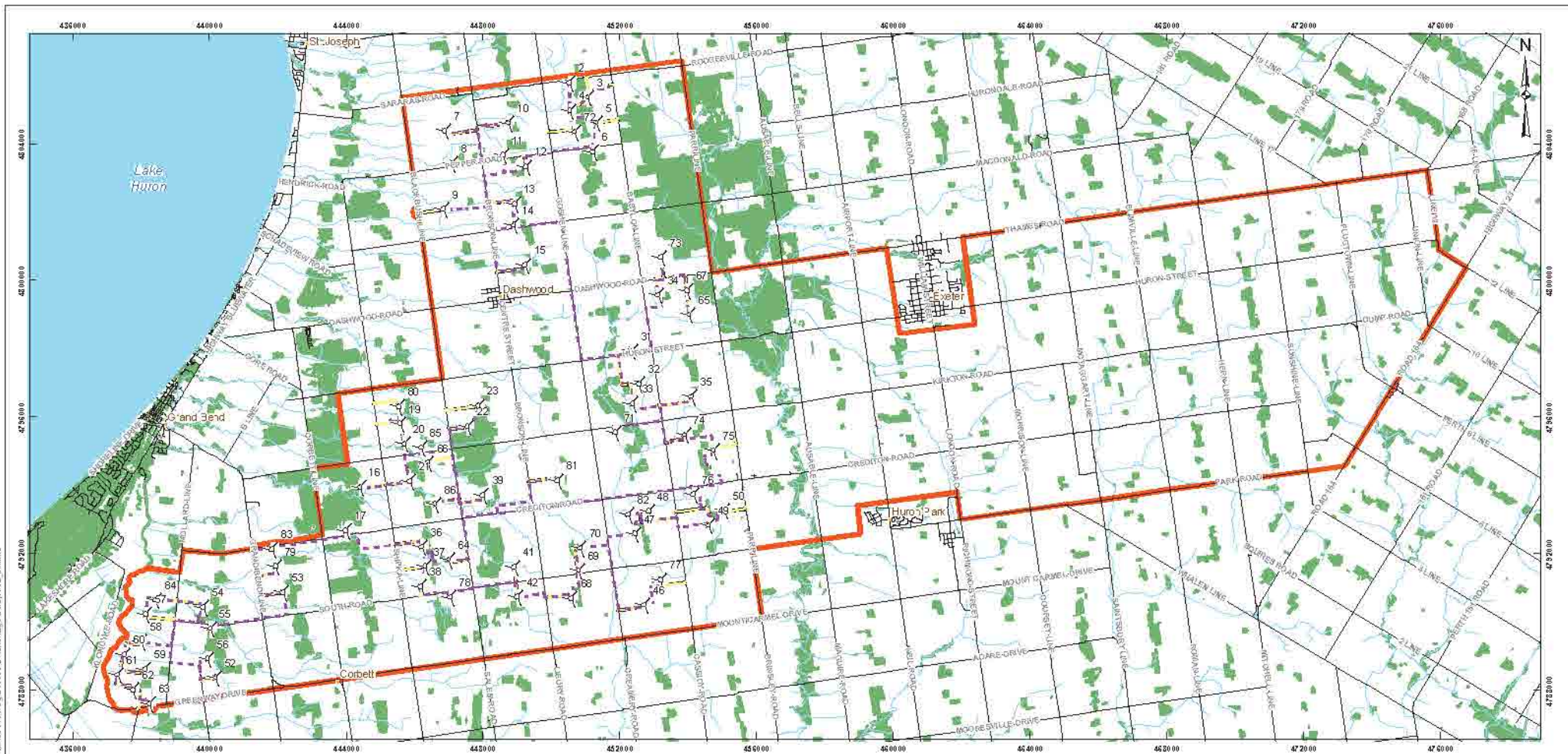
## HERITAGE ASSESSMENT REPORT GOSHEN WIND ENERGY CENTRE

---

The Study Area encompasses approximately 35,000 hectares of privately owned land parcels. Land use is predominantly pasture and cash-crop agriculture (e.g., farmed for corn, soybeans, wheat), with pockets of wooded areas and extensive drainage ditches. Huron County is considered to have highly specialized livestock, poultry and hog production while soybeans and alfalfa crops have expanded more recently. The Huron County Official Plan (County OP) recognizes the benefits of renewable energy systems, such as wind power, both in terms of environmental and economic benefits for the County and its residents.

Figure 2 indicates the location and photograph direction within the Study Area of the plates that are referenced throughout the Report.





C:\P\606320\010\01-151-0201\_151000\_1114\BWP\10041105\1005\1006\1007\1008\1009\1010\1011\1012\1013\1014\1015\1016\1017\1018\1019\1020\1021\1022\1023\1024\1025\1026\1027\1028\1029\1030\1031\1032\1033\1034\1035\1036\1037\1038\1039\1040\1041\1042\1043\1044\1045\1046\1047\1048\1049\1050\1051\1052\1053\1054\1055\1056\1057\1058\1059\1060\1061\1062\1063\1064\1065\1066\1067\1068\1069\1070\1071\1072\1073\1074\1075\1076\1077\1078\1079\1080\1081\1082\1083\1084\1085\1086\1087\1088\1089\1090\1091\1092\1093\1094\1095\1096\1097\1098\1099\1100\1101\1102\1103\1104\1105\1106\1107\1108\1109\1110\1111\1112\1113\1114\1115\1116\1117\1118\1119\1120\1121\1122\1123\1124\1125\1126\1127\1128\1129\1130\1131\1132\1133\1134\1135\1136\1137\1138\1139\1140\1141\1142\1143\1144\1145\1146\1147\1148\1149\1150\1151\1152\1153\1154\1155\1156\1157\1158\1159\1160\1161\1162\1163\1164\1165\1166\1167\1168\1169\1170\1171\1172\1173\1174\1175\1176\1177\1178\1179\1180\1181\1182\1183\1184\1185\1186\1187\1188\1189\1190\1191\1192\1193\1194\1195\1196\1197\1198\1199\1200\1201\1202\1203\1204\1205\1206\1207\1208\1209\1210\1211\1212\1213\1214\1215\1216\1217\1218\1219\1220\1221\1222\1223\1224\1225\1226\1227\1228\1229\1230\1231\1232\1233\1234\1235\1236\1237\1238\1239\1240\1241\1242\1243\1244\1245\1246\1247\1248\1249\1250\1251\1252\1253\1254\1255\1256\1257\1258\1259\1260\1261\1262\1263\1264\1265\1266\1267\1268\1269\1270\1271\1272\1273\1274\1275\1276\1277\1278\1279\1280\1281\1282\1283\1284\1285\1286\1287\1288\1289\1290\1291\1292\1293\1294\1295\1296\1297\1298\1299\1300\1301\1302\1303\1304\1305\1306\1307\1308\1309\1310\1311\1312\1313\1314\1315\1316\1317\1318\1319\1320\1321\1322\1323\1324\1325\1326\1327\1328\1329\1330\1331\1332\1333\1334\1335\1336\1337\1338\1339\1340\1341\1342\1343\1344\1345\1346\1347\1348\1349\1350\1351\1352\1353\1354\1355\1356\1357\1358\1359\1360\1361\1362\1363\1364\1365\1366\1367\1368\1369\1370\1371\1372\1373\1374\1375\1376\1377\1378\1379\1380\1381\1382\1383\1384\1385\1386\1387\1388\1389\1390\1391\1392\1393\1394\1395\1396\1397\1398\1399\1400\1401\1402\1403\1404\1405\1406\1407\1408\1409\1410\1411\1412\1413\1414\1415\1416\1417\1418\1419\1420\1421\1422\1423\1424\1425\1426\1427\1428\1429\1430\1431\1432\1433\1434\1435\1436\1437\1438\1439\1440\1441\1442\1443\1444\1445\1446\1447\1448\1449\1450\1451\1452\1453\1454\1455\1456\1457\1458\1459\1460\1461\1462\1463\1464\1465\1466\1467\1468\1469\1470\1471\1472\1473\1474\1475\1476\1477\1478\1479\1480\1481\1482\1483\1484\1485\1486\1487\1488\1489\1490\1491\1492\1493\1494\1495\1496\1497\1498\1499\1500\1501\1502\1503\1504\1505\1506\1507\1508\1509\1510\1511\1512\1513\1514\1515\1516\1517\1518\1519\1520\1521\1522\1523\1524\1525\1526\1527\1528\1529\1530\1531\1532\1533\1534\1535\1536\1537\1538\1539\1540\1541\1542\1543\1544\1545\1546\1547\1548\1549\1550\1551\1552\1553\1554\1555\1556\1557\1558\1559\1560\1561\1562\1563\1564\1565\1566\1567\1568\1569\1570\1571\1572\1573\1574\1575\1576\1577\1578\1579\1580\1581\1582\1583\1584\1585\1586\1587\1588\1589\1590\1591\1592\1593\1594\1595\1596\1597\1598\1599\1600\1601\1602\1603\1604\1605\1606\1607\1608\1609\1610\1611\1612\1613\1614\1615\1616\1617\1618\1619\1620\1621\1622\1623\1624\1625\1626\1627\1628\1629\1630\1631\1632\1633\1634\1635\1636\1637\1638\1639\1640\1641\1642\1643\1644\1645\1646\1647\1648\1649\1650\1651\1652\1653\1654\1655\1656\1657\1658\1659\1660\1661\1662\1663\1664\1665\1666\1667\1668\1669\1670\1671\1672\1673\1674\1675\1676\1677\1678\1679\1680\1681\1682\1683\1684\1685\1686\1687\1688\1689\1690\1691\1692\1693\1694\1695\1696\1697\1698\1699\1700\1701\1702\1703\1704\1705\1706\1707\1708\1709\1710\1711\1712\1713\1714\1715\1716\1717\1718\1719\1720\1721\1722\1723\1724\1725\1726\1727\1728\1729\1730\1731\1732\1733\1734\1735\1736\1737\1738\1739\1740\1741\1742\1743\1744\1745\1746\1747\1748\1749\1750\1751\1752\1753\1754\1755\1756\1757\1758\1759\1760\1761\1762\1763\1764\1765\1766\1767\1768\1769\1770\1771\1772\1773\1774\1775\1776\1777\1778\1779\1780\1781\1782\1783\1784\1785\1786\1787\1788\1789\1790\1791\1792\1793\1794\1795\1796\1797\1798\1799\1800\1801\1802\1803\1804\1805\1806\1807\1808\1809\1810\1811\1812\1813\1814\1815\1816\1817\1818\1819\1820\1821\1822\1823\1824\1825\1826\1827\1828\1829\1830\1831\1832\1833\1834\1835\1836\1837\1838\1839\1840\1841\1842\1843\1844\1845\1846\1847\1848\1849\1850\1851\1852\1853\1854\1855\1856\1857\1858\1859\1860\1861\1862\1863\1864\1865\1866\1867\1868\1869\1870\1871\1872\1873\1874\1875\1876\1877\1878\1879\1880\1881\1882\1883\1884\1885\1886\1887\1888\1889\1890\1891\1892\1893\1894\1895\1896\1897\1898\1899\1900\1901\1902\1903\1904\1905\1906\1907\1908\1909\1910\1911\1912\1913\1914\1915\1916\1917\1918\1919\1920\1921\1922\1923\1924\1925\1926\1927\1928\1929\1930\1931\1932\1933\1934\1935\1936\1937\1938\1939\1940\1941\1942\1943\1944\1945\1946\1947\1948\1949\1950\1951\1952\1953\1954\1955\1956\1957\1958\1959\1960\1961\1962\1963\1964\1965\1966\1967\1968\1969\1970\1971\1972\1973\1974\1975\1976\1977\1978\1979\1980\1981\1982\1983\1984\1985\1986\1987\1988\1989\1990\1991\1992\1993\1994\1995\1996\1997\1998\1999\2000

**LEGEND**

- Turbine
- Collector Cable
- Access Road
- Roads
- Watercourse
- Study Area
- Wooded Area

**REFERENCE**

Base Data - MNR NRVIS, obtained 2004, CANMAP v2006.4  
 Produced by Golder Associates Ltd. under license from  
 Ontario Ministry of Natural Resources, © Queens Printer 2008  
 Projection: Transverse Mercator Datum: NAD 83 Coordinate System: UTM Zone 17



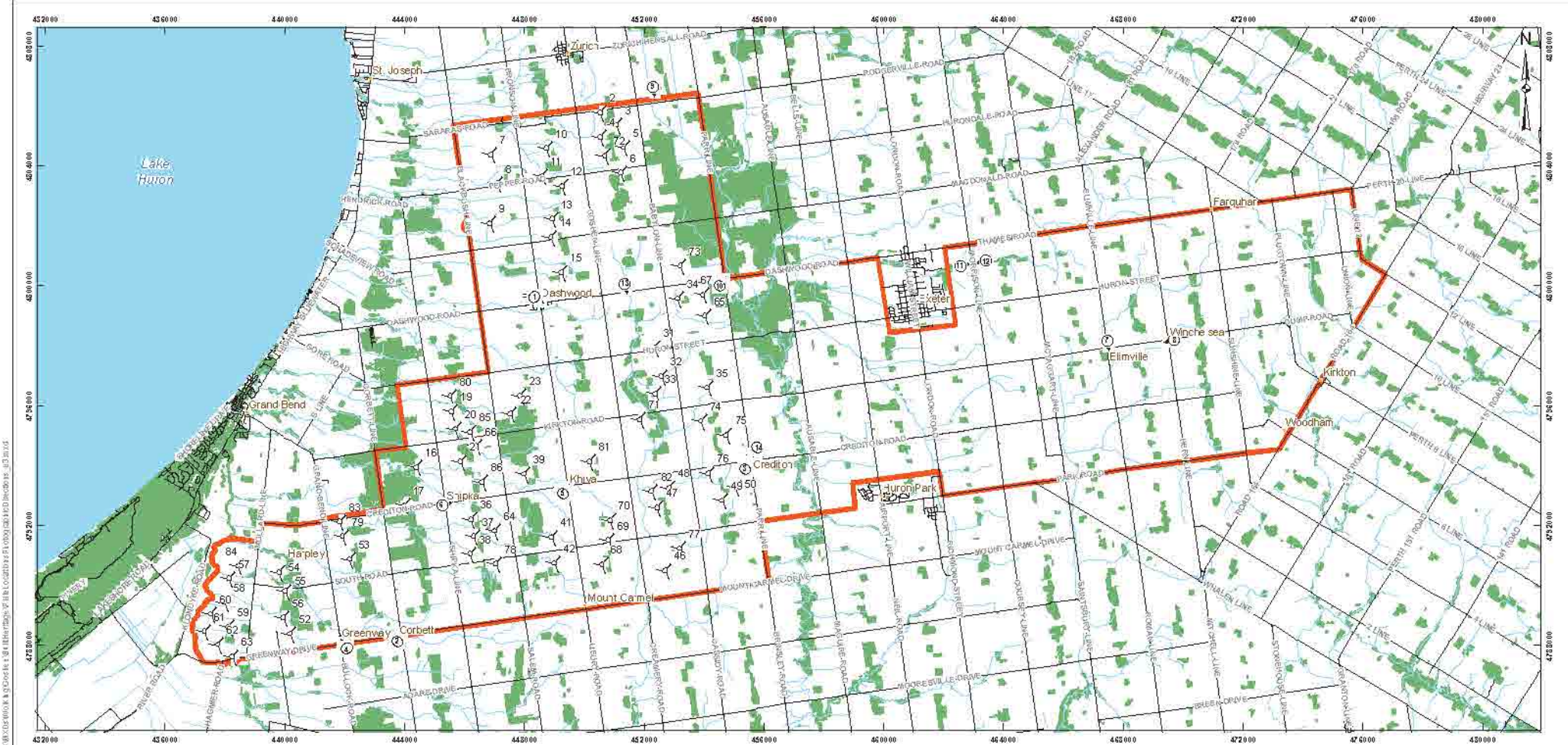
PROJECT  
 NEXTERA ENERGY CANADA, ULC  
 GOSHEN WIND ENERGY CENTRE,  
 HURON COUNTY, ONTARIO

TITLE  
**STUDY AREA AND PROJECT LOCATIONS**



PROJECT NO.	10-1514201	SCALE AS SHOWN	REV. 00
DESIGN	BC	23 Aug. 2012	
GIS	BC	24 Sep. 2012	
CHECK	MR	24 Sep. 2012	
REVISION			

**FIGURE 1**



**LEGEND**

- Turbine
- Plate Number and Photographic Direction
- Roads
- Watercourse
- Study Area
- Wooded Area

**REFERENCE**  
 Base Data - MNR NRVIS, obtained 2004, CANMAP v2006.4  
 Produced by Golder Associates Ltd. under license from  
 Ontario Ministry of Natural Resources, © Queens Printer 2008  
 Projection: Transverse Mercator Datum: NAD 83 Coordinate System: UTM Zone 17



PROJECT  
 NEXTERA ENERGY CANADA, ULC  
 GOSHEN WIND ENERGY CENTRE,  
 HURON COUNTY, ONTARIO

TITLE  
**PLATE LOCATIONS AND  
 PHOTOGRAPHIC DIRECTIONS**



PROJECT NO.	REV.	DATE	SCALE AS SHOWN	REV. NO.
10-1514291				
DESIGN	BC	23 Aug 2012		
GIS	RC	24 Sep 2012		
CHECK	MR	24 Sep 2012		
REVIEW				

**FIGURE 2**



## 2.0 METHODOLOGY

For the purposes of this Heritage Assessment Report the term **Study Area** is used to reference the specified area of land that surrounds the Project (Figure 1) and **Project Location** refers to the participating parcels within the Study Area where project components are proposed to be located. The limits of the Study Area were determined during the early stages of the project in order to encompass a 300 m buffer from the edge of all proposed project components. This buffer was extended to the nearest roads and at a few locations to the nearest lot lines in order to allow for flexibility and potential changes in layout as the project progressed (Figure 1).

**Project Components** are defined as all infrastructure related to the wind farm layout, including the wind turbines, access roads, service roads, substations, transmission lines, and collector cables. Generally, project components could impact the Study Area during their construction through the potential disturbance of heritage resources.

### 2.1 Study Process

For this Heritage Assessment Report, Golder Associates undertook the following tasks:

- the production of a land use history of the Study Area through the use of historical archival research and a review of historic mapping;
- the identification of protected properties, built heritage resources and cultural heritage landscapes through a windshield survey, public consultation and background research;
- the creation of an inventory of all built heritage resources at the Project Location dating to greater than 40 years;
- an evaluation of the inventory of built heritage resources according to Ontario Regulation 9/06 *Criteria for Determining Cultural Heritage Value or Interest* to determine cultural heritage value or interest; and
- where appropriate, an evaluation of anticipated impacts according to InfoSheet #5 in *Heritage Resources in the Land Use Planning Process, Cultural Heritage and Archaeology Policies of the Ontario Provincial Policy Statement, 2005 (MTC, 2006)*.

The Heritage Assessment was based on a researched land use history of the Study Area. This research provided a framework within which to evaluate the relevance of historic structures and landscapes. Field surveys were conducted on November 1, 2010, December 7, 2011 and July 25, 2012.

Given that the potential wind turbines and associated infrastructure are to be localized on chosen participating parcels within the Study Area (Project Location), the cultural features that are located on those parcels were photographed and evaluated according to Ontario Regulation 9/06. This material appears in Section 4.0. All identification was undertaken from public road allowances.



Evaluation according to *Ontario Regulation 9/06* was based on extensive historical research. This research facilitated a full and developed understanding of the Study Area, specifically, patterns of settlement, agricultural trends and subsequent growth. Each potential resource was visually evaluated according to criteria outlined in *Ontario Regulation 9/06* as Design or Physical Value (Criteria 1) and Contextual Value (Criteria 3). Identification of Associative Value (Criteria 2) was based on public consultation with local historians as detailed in Section 2.3 as well as a detailed study of local publications. In order to identify potential associative value, research focused on properties which the historical community may have deemed of interest through extensive publications by the *Huron County Historical Society* and, where available, local township histories.

## 2.2 Regulatory Framework

In 2009, the Government of Ontario passed the *Green Energy and Green Economy Act* as a method of integrating more renewable energy into the Province's power grid and increasing energy conservation and sustainability (Government of Ontario, 2009; MOE, 2009). O.Reg. 359/09 of the *Environmental Protection Act* (EPA) defines the requirements for a proposed Renewable Energy project to achieve Renewable Energy Approval (REA). The Regulation integrates requirements under the *Environmental Assessment Act* within a new regulation under the EPA. This Built Heritage and Cultural Landscape Study for the proposed Goshen Wind Energy Centre was undertaken in order to meet the REA requirements as outlined in Ontario Regulation 359/09, which is part of the EPA.

This assessment addresses built heritage and cultural heritage landscape resources as required by Reg. 359/09 under part V.0.1 of the *Environmental Assessment Act*, the *Provincial Policy Statement*; *Ontario Regulation 9/06* under the *Ontario Heritage Act*, the *County of Huron Official Plan*; and the associated *Official Plan* from involved municipalities. Following are the specific sections of these documents that pertain to cultural heritage.

### 2.2.1 Ontario Regulation 359/09

Under Reg. 359/09, a heritage resource

*means real property that is of cultural heritage value or interest and may include a building, structure, landscape or other feature of real property.*

Under section 19(1) of Reg. 359/09, a proponent of a proposed renewable energy project must determine whether the project location is on a protected property, which includes:

- A property that is the subject of an agreement, covenant or easement entered into under clause 10 (1) (b) of the *Ontario Heritage Act*.
- A property in respect of which a notice of intention to designate the property to be of cultural heritage value or interest has been given in accordance with section 29 of the *Ontario Heritage Act*.



## HERITAGE ASSESSMENT REPORT GOSHEN WIND ENERGY CENTRE

- A property designated by a municipal by-law made under section 29 of the *Ontario Heritage Act* as a property of cultural heritage value or interest.
- A property designated by order of the Minister of Tourism and Culture made under section 34.5 of the *Ontario Heritage Act* as a property of cultural heritage value or interest of provincial significance.
- A property in respect of which a notice of intention to designate the property as property of cultural heritage value or interest of provincial significance has been given in accordance with section 34.6 of the *Ontario Heritage Act*.
- A property that is the subject of an easement or a covenant entered into under section 37 of the *Ontario Heritage Act*.
- A property that is part of an area designated by a municipal by-law made under section 41 of the *Ontario Heritage Act* as a heritage conservation district.
- A property designated as a historic site under Regulation 880 of the Revised Regulations of Ontario, 1990 (Historic Sites) made under the *Ontario Heritage Act*.

Under section 20(1) of Reg. 359/09, a proponent of a proposed renewable energy project must also consider whether engaging in the project may have an impact on a heritage resource at the property location not listed in section 19(1) or a property listed in section 19(1) that abuts the parcel of land on which the property location is situated.

If the resulting answer is that the proposed renewable energy project may have an impact on a heritage resource as documented in section 19(1) and 20(1), according to section 23(1) of Reg. 359/09 the proponent shall:

- (a) *conduct a heritage assessment consisting of,*
  - i) *an evaluation of whether there are any heritage resources at the project location, applying the criteria set out in Ontario Regulation 9/06 (Criteria for Determining Cultural Heritage Value or Interest) made under the Ontario Heritage Act, and*
  - ii) *if any heritage resources are identified as a result of the evaluation under subclause (i), an evaluation of any impact of the renewable energy project on the heritage resources and proposed measures to avoid, eliminate or mitigate the impact, which may include a heritage conservation plan;*

The Heritage Assessment report as well as any written comments provided by the Ministry of Tourism and Culture in respect of the heritage assessment will be submitted as part of an application for the issue of a renewable energy approval.



## **2.2.2 Ontario Regulation 9/06 made under the Ontario Heritage Act**

The criteria for determining cultural heritage value or interest are outlined under Regulation 9/06 as follows:

1. (1) The criteria set out in subsection (2) are prescribed for the purposes of clause 29 (1) (a) of the Act. O. Reg. 9/06, s. 1 (1).

(2) A property may be designated under section 29 of the Act if it meets one or more of the following criteria for determining whether it is of cultural heritage value or interest:

1. The property has design value or physical value because it,
  - i. is a rare, unique, representative or early example of a style, type, expression, material or construction method,
  - ii. displays a high degree of craftsmanship or artistic merit, or
  - iii. demonstrates a high degree of technical or scientific achievement.
2. The property has historical value or associative value because it,
  - i. has direct associations with a theme, event, belief, person, activity, organization or institution that is significant to a community,
  - ii. yields, or has the potential to yield, information that contributes to an understanding of a community or culture, or
  - iii. demonstrates or reflects the work or ideas of an architect, artist, builder, designer or theorist who is significant to a community.
3. The property has contextual value because it,
  - i. is important in defining, maintaining or supporting the character of an area,
  - ii. is physically, functionally, visually or historically linked to its surroundings, or
  - iii. is a landmark. O. Reg. 9/06, s. 1 (2).

## **2.3 Public Consultation and Recognition**

Golder consulted local historians and knowledgeable individuals as part of the identification of potential heritage resources within the Study Area. In each meeting, Golder provided mapping of the Study Area in order to focus discussion on the knowledge of any potentially significant heritage resources within the mapped Study Area. These resources included both built heritage and cultural heritage landscapes. These meetings provided valuable insight into the historical evolution of the region. The main finding of these meetings was that all, groups agreed that, with the exception of the Henry Eilber House (see Section 5.1.1), no heritage resources of potential cultural heritage value or interest exist within the Study Area.



Golder contacted David Armstrong, the president of the Huron County Historical Society, who provided a list of knowledgeable local historians to potentially contact and a list of applicable documents. Mr. Armstrong invited Golder to attend a meeting of the Executive of the Huron County Historical Society. Golder met with the Executive including Mr. Armstrong along with Rhea Hamilton-Seeger, Elaine Snell, and Ted Turner on May 11, 2011.

Alison Lobb, local historian and editor of the "Goderich Township History" met with Golder on October 26, 2010 and provided invaluable insight into the history of the Study Area.

Jenna Leifso, archivist of the Huron County Museum and Archives, located in Goderich, aided Golder with the retrieval and interpretation of archived documents and publications. Golder visited the archives on October 26, 2010.

Ralph Laviolette, archivist for the Bayfield Historical Society and Secretary of the Huron Historical Society, met with Golder on October 27, 2010 at the Bayfield Archives. Mr. Laviolette provided Golder with knowledge pertaining to the local history of the area and copies of applicable historical documents.

The Municipalities of Bluewater and South Huron were contacted regarding municipal inventories, registries or lists of built heritage resources. Arlene Parker and Trista Russell provided information regard the policies of both municipalities. Further information regarding municipal heritage resources can be found in Section 5.1.

Since meeting with the Huron County Historical Society and Ms. Lobb, the limits of the Study Area have been expanded east of Parr Line. Therefore, both groups did not comment on potential resources within the expanded area. However, consultation with both municipalities included discussion of entirety of the Municipalities of Bluewater and South Huron.



### 3.0 LAND USE HISTORY

#### 3.1 Physical Setting

The Study Area is located in the Municipalities of Bluewater and South Huron, formerly the Townships of Hay and Stephen in Huron County, Ontario. The Study Area is comprised of various lots throughout the county as outlined in Table 1.

**Table 1: Properties within the Goshen Wind Energy Centre, Huron County**

County	Geographic Township	Concession	Lot	
Huron	Hay	7 to 14	3 to 16	
		South Boundary	11 to 27	
	Stephen	North Boundary	12 to 27	
		River aux Sables	9 to 19	
		1	8 to 19	
		2 to 3	8 to 23	
		4 to 6	6 to 23	
		7 to 14	3 to 23	
		15 to 17	3 to 20	
		18	3 to 15	
		19 to 21	3 to 10	
		22	8 to 18	
		South Boundary	12 to 43	
		Usborne	South Eastern Boundary	1 to 15
			South Side of Thames Road	5 to 27
	1		1 to 15	
	2 to 3		1 to 20	
	4 to 10		1 to 18	
	11		2 to 18	
	12		7 to 18	
	13		8 to 18	
	14		11 to 18	
	15	14 to 18		





The Study Area contains four physiographic regions, including: the Huron Fringe, Horseshoe Moraines, Huron Slope and Stratford Till Plain regions. Comprising the majority of the Study Area, the Huron Slope region is flanked by the Horseshoe Moraines, which span the length of the eastern boundary of the Study Area, and the Huron Fringe, which runs along the western shoreline between the Study Area and Lake Huron. The Stratford Till Plains comprises the eastern point of the Study Area.

The Huron Slope occupies roughly 2,590 square kilometres along Lake Huron's eastern shoreline. It occupies the central portion of the Study Area and is a clay plain that was modified by a narrow sandy strip. Although this sandy strip is detrimental for agriculture, livestock is common throughout the region as well as mixed agricultural production. In contrast to the physiographic simplicity of the Horseshoe Moraine, the Huron Slope is a region of distinct landscapes, particularly the Algonquin bluff. It has substantial cliffs (roughly 25m in height) and deep gullies (Chapman 1984, 160-161).

The Horseshoe Moraines physiographic region reaches across roughly 5,450 square kilometres from the eastern shore of Lake Huron in Lambton County to the southern side of Georgian Bay in Grey County and back down to Haldimand-Norfolk County. It is a relatively simple landscape and generally slopes to the west towards Lake Huron. Undrained swampy areas persist along the eastern side of the region reaching into both townships although historically, these swamp lands were much more pervasive, particularly through Hay Township. This region has historically sustained a variety of crops, although it is particularly well suited to livestock production (Chapman, 1984: 127 – 128).

The Huron Fringe, although directly associated with the Huron Slope region, can be distinguished by its distinctive boulders, gravel bars and visually prominent sand dunes. Containing only 1,100 square kilometres of land between Sarnia and Tobermory, it is quite narrow. Within the Study Area, the Huron Fringe is characterized by the marshy farmlands within the Study Area, adjacent to the picturesque sand dunes to the west (Chapman, 1984: 161). The Huron Fringe occupies a very small portion of the southwest corner of the Study Area.

The Stratford Till Plain physiographic region encompasses roughly 3,550 square kilometres from London through to Blyth and Listowel. There is a projection of the region towards Arthur and the Grand Valley. The region slopes towards the southwest corner and is largely level in the north. The Study Area is drained by the Maitland River watershed, although the division between the Maitland and Thames River watershed is vague. Various soil types throughout the region require artificial drains for productive agricultural use which make municipal ditches both essential and plentiful. Gravel for road development and use in construction is minimal. The region generally has more precipitation, both rain and snow, than much of Southern Ontario resulting in muddy springs and harsh winters. Nonetheless, the region is one of the most fertile areas in the province. (Chapman 1984, 133-134)



## **3.2 First Nations Occupation**

Prior to the formation of the county and townships, the Study Area first enters the historic record when the Ojibwa and Chippewa First Nations entered into Treaty 27½,

*...being an agreement made at Amherstburg in the Western District of the Province of Upper Canada on the 26th of April, 1825, between James Givens, Esquire, Superintendent of Indian Affairs, on behalf of His Majesty King George the Fourth and the Chiefs and Principal Men of the part of the Chippewa Nation of Indians, inhabiting and claiming the tract of land .... Wawanosh Township in the County of Huron was named after Way-way-nosh the principal Chief of the Band making this Treaty.*

(Morris, 1943:26-27)

Treaty Number 27½ was subsequently confirmed on July 10, 1827 as Treaty Number 29 with only a minor change in the legal description of the boundaries of the land surrender (Morris, 1943: 27).

Additional First Nations history of the Study Area and its environs has been documented in the Stage 1 Archaeological Assessment (Golder 2012). It is not apparent that First Nations activities and presence have influenced the character of the modern cultural landscape (as far as can be discerned through vegetation patterns, earthworks, knowledge of their sacred sites, etc.) nor have they left tangible, above ground material features (earthworks, etc.). The aboriginal presence in the Study Area is assumed at this time to be the matter of archaeology.

## **3.3 Crown Survey**

The Study Area is located across the Municipalities of Bluewater and South Huron in the County of Huron. The Study Area crosses through the former townships of Hay, Stephen and Osborne. Each township was surveyed by Deputy Provincial Surveyor John McDonald, on behalf of the Canada Company, in the 1830s (Figure 3) (Dean, 1969: Plate 99). Settlement began shortly after the completion of each survey.

In 1824 the Canada Company, a large land development company, entered into an agreement with the Crown to purchase a large section of land extending inland from the east shore of Lake Huron comprising of portions of modern day Bruce, Huron, Perth, Middlesex and Lambton Counties. Known as the Huron Tract, this area was divided into Districts in 1841. The District of Huron was again divided into Huron, Perth and Bruce Counties at the first meeting of Provincial Parliament in 1850, although the region continued to act as a single administrative unit known as the United Counties until 1852 (Belden, 1879: ii and Lee, 2004: 217-221). The 16 townships of modern day Huron County were surveyed between 1827 and 1852 (Scott, 1966: Chapters 10 & 11).

Of the 20 townships located within the Huron Tract, nine became part of the Huron County including Hay, Stephen, and Osborne, as well as Goderich, Tuckersmith, Colborne, Stanley, McKillop, and Hullett Townships. The townships boundaries were surveyed in the late 1820s while the interiors of the 16 townships were surveyed between 1827 and 1852 (Scott, 1966: Chapters 10 & 11).



The initial survey boundaries focused primarily on roadways such as the Huron and London Roads which cut across the Huron Tract. Lots were established along the roadways and represented the places of earliest settlement across Huron County. It was not until McDonald's survey that the centre of each township was surveyed. This occurred in 1835 in Hay Township, 1837 in Stephen Township and 1839 in Usborne Township.

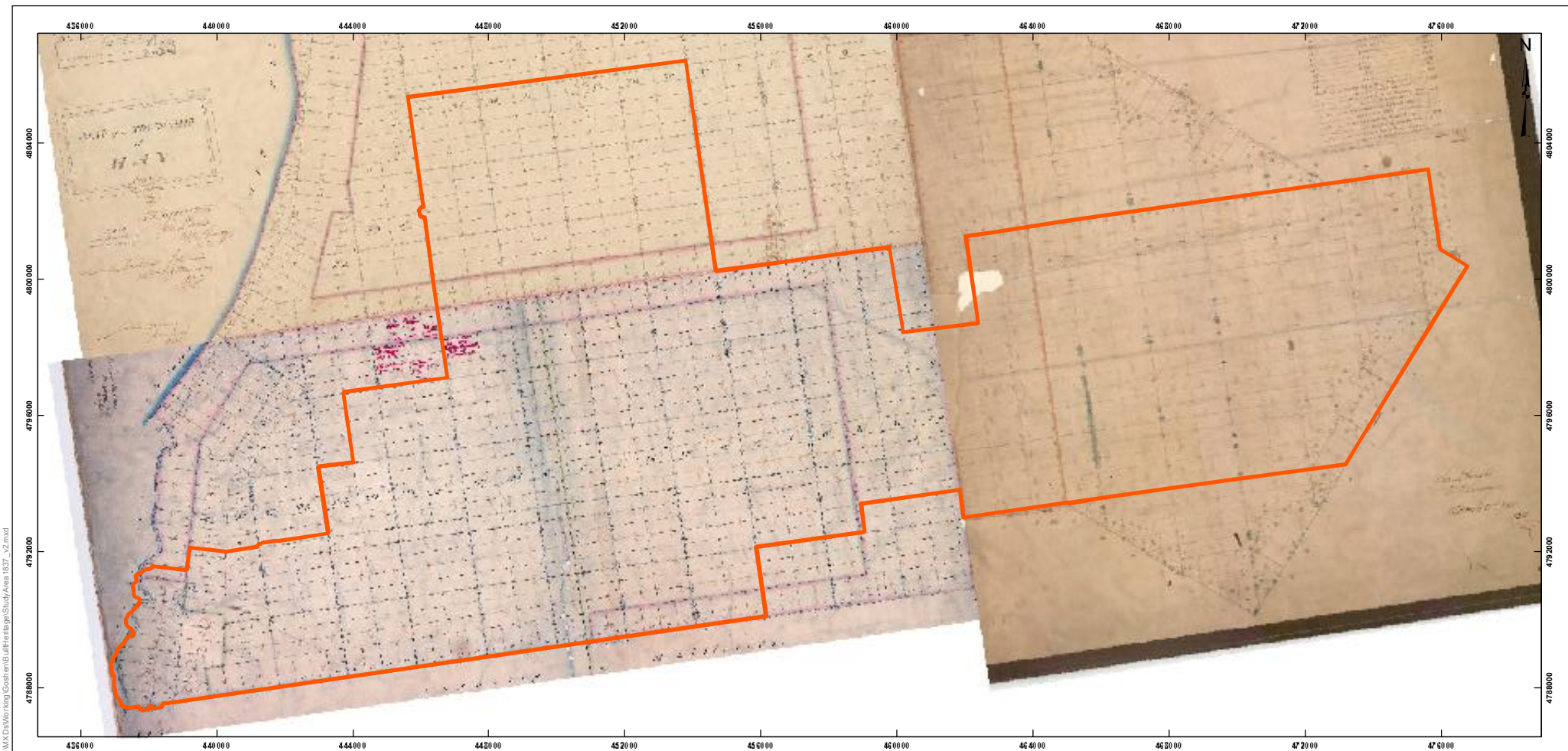
All three townships within the Study Area were surveyed using a 1,000 acre sectional special system (Dean, 1969: Plate 99). This system of lot distribution established concessions containing 100 acre lots divided every five lots by side roads (Figure 3). The lots fronted onto concession roads and were divided by concession lines known as blind lines at the rear of the property. In each township, the concession roads were oriented in a north-south direction, with side roads crossing the township in an east-west direction.

The 1,000 acre sectional system survey pattern was adjusted to accommodate previously established roadways. In the Study Area, lots were rotated to face the Thames Road, today Dashwood Road, and the boundaries of the Huron Tract. As settlement began in the interior of the townships, farmsteads were generally constructed at the front of each lot along concession roads (Figure 4).

### **3.4 Early Settlement**

Settlement occurred at dramatically different rates throughout Huron County. Directed by the Canada Company, there were concerns expressed early in the process by company stakeholders as rapid settlement was needed in order to meet financial obligations. As part of an agreement between the Crown and the Canada Company, land was purchased at significantly reduced rates and one third of the payment was due in pre-arranged improvements and infrastructure development. The Huron Tract Improvement Fund provided financing for various forms of infrastructure development including roadways, bridges, canals, harbour developments, mills and social institutions such as churches and schools (Scott, 1966: 140). Of the utmost importance was access to the region and as such the construction of roadways was beneficial to both parties. The region was heavily forested and settlement was very difficult without a roadway. The promised infrastructure was delayed by the Canada Company, but as settlement accelerated in the 1850s, roadways did improve.

Settlement was initially concentrated along major roadways and waterways. As a result, the earliest communities were established outside the Study Area along the London and Lake Roads as well as the various inlets along Lake Huron. In Hay Township, the first settler appears to have arrived as late as 1839 when William Wilson settled on the London Road, although the presence of squatters was also likely (Scott, 1966: 171). Throughout the 1840s settlement accelerated, albeit at a slow pace. In 1841 the population of Hay Township was 113 and by 1850 it had reached 764 with a mere 1,073 acres under cultivation (Smith, 1851: 181).



**LEGEND**

Study Area

**REFERENCE**

DRAWING BASED ON  
 McDonald, John  
 1837 a. Hay Township  
 1837 b. Stephen Township  
 1839 Osborne Township  
 Map on file with the Ministry of Natural Resources  
 Crown Land Survey Records Office, Peterborough, Ontario.  
 Projection: Transverse Mercator Datum: NAD 83 Coordinate System: UTM Zone 17



PROJECT	NEXTERA ENERGY CANADA, ULC GOSHEN WIND ENERGY CENTRE, HURON COUNTY, ONTARIO		
TITLE	STUDY AREA 1837		
PROJECT NO.	10-15-14201	SCALE AS SHOWN	REV. 0.0
DESIGN	BC	23 Aug 2012	FIGURE: 3
CHECK	MR	23 Aug 2012	
REVISION			



G:\Projects\2010\10-15-14201\_Jericho\_Burwater\_Goshen\GIS\MXD\Working\Goshen\GullHeritage\StudyArea\1837\_v2.mxd



**LEGEND**

Study Area

**REFERENCE**

DRAWING BASED ON  
 Belden, H. and Company  
 1879 Illustrated Historical Atlas Of Huron County.  
 1972 reprint. Ross Cumming, Owen Sound.  
 Projection: Transverse Mercator Datum: NAD 83 Coordinate System: UTM Zone 17



PROJECT  
 NEXTERA ENERGY CANADA, ULC  
 GOSHEN WIND ENERGY CENTRE,  
 HURON COUNTY, ONTARIO

TITLE  
**STUDY AREA 1879**



PROJECT NO:	10-15-1-0201	SCALE:	AS SHOWN	REV:	0.0
DESIGN:	BC	23 Aug 2012			
CS:	BC	23 Aug 2012			
CHECK:	MR	23 Aug 2012			
REVISION:					

**FIGURE: 4**

G:\Projects\2010\10-15-1-0201\_Jericho\_Biorewater\_Goshen\GIS\MXD\Working\Goshen\Baldwin\Heritage\StudyArea\1879\_v2.mxd



Similarly to Hay Township, Stephen Township was sparsely settled throughout its first two decades of existence. Although James Willis, the first settler, arrived in the township as early as 1831, the population had only grown to 213 by 1845 and 498 by 1850 with only 1,495 acres under cultivation (Belden, 1879: xvii and Smith, 1851: 182). In comparison, Tuckersmith Township outside of the Study Area, directly north of Hay, had a population of 1,400 by 1850 with 4,835 acres under cultivation (Smith, 1851: 181).

Settlement in Osborne Township was similarly slow in the first two decades of settlement. The first settlers were reported to have arrived in the early 1830s in the vicinity of Exeter (Belden, 1879: xx). Settlement was slow through to 1845 when the population was only 283; it accelerated shortly thereafter. By 1852 the population had increased to 1,484 and 3,467 acres were under cultivation (Scott, 1966: 166).

Some delayed settlement can be attributed to extensive swampy land located along the eastern portion of Hay Township and, to a lesser extent, the southwest corner of Stephen Township. The swamp, still evident today, stretches into the Study Area west of Exeter. It was a major deterrence to not only early settlement, but also agriculture and industrial development as conditions in the swamp restricted construction of effective infrastructure, particularly roadways (Hay Township Book Committee, 1996: 12). The swamp acted as a general deterrence for settlement and hindered the movement of goods causing a significant gap in roadways across the township.

The quality of farmland was of primary concern for early settlers and with the wide availability of land throughout Huron County demand for potentially swampy lands was low. Settlement began in earnest in the latter half of the 19<sup>th</sup> century when demand for high quality land throughout the province began to outstrip supply. Although early population estimates are quite variable, by 1871 the population of Hay was reported as 3,897, Stephen Township as 4,349 and Osborne Township as 3,831 (Belden, 1879: v and xx).

Settlement accelerated in the 1850s following the organization of various municipalities and the continued improvement of roadways. With the arrival of railway access, settlement exponentially increased. By 1881, 14 of the 17 townships throughout the Huron County were completely settled (Commission, 1881: 220-221). Osborne contained the tenth largest population while Hay contained the eighth and Stephen contained the fourth largest population in the county.

### **3.5 Agriculture**

Early agricultural practices throughout the Study Area were greatly dependant on the number of cleared acres available. Within the Study Area, as with the surrounding region, settlers practiced sustenance farming where crops, including potatoes, corn and root vegetables, were harvested primarily for personal consumption (Scott, 1984: 95). This occurred from the time of initial settlement through to the late 1840s.

Cash crops began to emerge across the county in the late 1840s with wheat representing the largest acreage in the county, followed by oats, peas and potatoes. Although substantial advancements were made during the 1840s, it was not until the following decade that farmers, particularly those within the Study Area, fully diversified and began large-scale exportation of their goods. Perhaps the best example of this rapid increase can be found in wheat cultivation. During the 1840s, annual wheat yields were less than 3,000 bushels per year.



By 1856, 100,000 bushels of wheat were shipped from the port of Bayfield alone (Scott, 1966: 100). The introduction of machinery, such as the McCormick reaper, significantly increased production as did continued settlement and the subsequent clearing of land.

In 1881, when the Ontario Agricultural Commission undertook a survey across the province, Huron County was still considered a relatively new county; half of the settled land was clear of stumps and one third of residences were constructed of first class material. Small communities had been established throughout the Study Area to service the increasing demand for lumber and agricultural implements. Drainage had been started, but was underutilized, particularly throughout the Study Area. Major crops included wheat, barley, oats and corn. Stock raising and dairying were also emphasized (Commission, 1881: 209-212).

Although swampy marshlands comprised of an estimated 30 percent of Hay Township, as much as 50 percent of the township was cleared by 1881 (Commission, 1881: 213). Roughly one fifth of cultivated acreage was devoted to oats, 16 percent to fall wheat and 12 percent to hay. The township was described as best adapted for grain growing, but an estimated 6,000 acres was devoted to pasture which represented one quarter of total acreage (Commission, 1881: 213-230). Large portions of the swamp land were later drained and to accommodate agriculture expansion.

In Stephen Township, roughly 35 percent of the land was characterized as swampy and a mere 30 percent of available land cleared (Commission, 1881: 217 and 231). Although estimated acreage was not provided, wheat, oats and barley were reported to represent the primary crops throughout the township. In contrast to Hay Township, in 1881, Stephen Township described livestock as its primary agricultural output (Commission, 1881: 229). This was reflective of an emerging county-wide emphasis on livestock production which was particularly well suited to the topography of the township.

In contrast, only five percent of Usborne Township was covered in swamp lands in 1881 (Commission, 1881: 217). This opened the township to more extensive settlement and agricultural development. More than 70 percent of the township was cleared by this time representing the highest proportion of cleared land in Huron County (Commission, 1881: 231). Usborne Township balanced the division of crops similar to surrounding townships with 15 percent of acreage devoted to fall wheat, 12 percent to pasture and 10 percent to winter wheat, oats and hay. Stock raising was acknowledged alongside grain growing in the chief products of the township.

Livestock production continued to rise throughout the townships from the late 19<sup>th</sup> through to the 20<sup>th</sup> century. Increasing mechanization and subsequent specialization in livestock production during the later half of the 20<sup>th</sup> century caused a slight decline in livestock production throughout the county, however, the balance between pasture and crops such as oats, wheat and hay continued throughout the 20<sup>th</sup> century.

Today, the Study Area continues to be comprised of primarily mixed-use agricultural characterized by pasture and cash crops. The county is considered to have highly specialized livestock, poultry and hog production. The Municipalities of Bluewater and South Huron alone are responsible for 30 percent of county's hog production (Statistic Canada, 2006). While the cultivation of crops historically associated with the region continues to include corn for grain and winter wheat, soybeans and alfalfa have become prominent crops as well; today both of the latter are within the top five uses of acreage (Statistics Canada, 2006).



### **3.6 Industry**

Among the first industries found in settler communities were saw and grist mills. Each provided essential services during the 19<sup>th</sup> century. Prior to the arrival of steam power in the late 19<sup>th</sup> century, the location of a mill was determined by the availability of water power. As a result of the localized nature of demand, early mills were located as close to settlers as possible. This resulted in a large number of saw mills dispersed throughout newly settled areas where timber was abundant and water power was available (H. H. Society, 2008: 2).

Grist mills provided settlers with a means to ground meal and flour; two staples of the pioneer diet. The establishment of a grist mill was determined not only by the availability of power, but also the quantity of grain growing and the presence of a population large enough to support the operations.

Sawmills were established as roadways and lots were cleared. Markets for lumber developed during the pioneer phase of settlement when demand for the abundance of timber increased. Timber not only provided construction material for homes and barns, but also often provided a source of income for the early settlers as they cleared the tress from their lots.

The first saw mill in Stephen Township was located west of the Study Area in modern day Grand Bend. The mill was constructed by Brewster and Smart in 1832 on land purchased from the Canada Company (Mack, 1992: 148). The following year, William McConnell constructed a saw mill on the Aux Sables River where it met the London Road (modern day Exeter) north of the Study Area (Belden, 1879: xi).

The advent of steam power in the 1870s decreased reliance on a water source for power and increased flexibility of location. By 1879, there were roughly 30 saw mills in the county, 17 of which were steam powered (Huron County Historical Society, 2008: 10). By the 1890s, as a result of a province-wide construction boom and increased demand for lumber, Stephen Township alone had at least 20 saw mills (Mack, 1992: 155).

Blacksmiths provided an essential service to early settlers. They provided tools ranging from hoes, forks, hand cultivators, scythes, cutting hooks and spades. Although the first blacksmith within the Study Area was not determined, the first blacksmith in Stephen Township was established in 1847 along the London Road. It is likely that nearly all of the communities established within the Study Area after 1860 had at least one, if not multiple, blacksmiths. By 1870, 56 blacksmiths were listed throughout the county (Huron County Historical Society, 2008: 25). As settlement advanced throughout the region, the industry continued to grow in response to demands for farm tools and 19<sup>th</sup> century necessities such as wagons.

Brick and tile yards required good quality clay deposits. At the same time, they had to be close to their markets due to the heavy weight of the final product and high transportation costs. Huron County contained large amounts of brick clay and as such brick works were located throughout the county. It appears the first brick work in the county was in Maitlandville (modern day Saltford) and opened in 1834 (Huron County Historical Society, 2008: 31). The first use of brick appeared in Exeter, just north of the Study Area, in 1860 (Mack, 1992: 173 – 174). Extensive brick works were located in the vicinity of Crediton. Many were in operation throughout the 19<sup>th</sup> century, although demand declined in the early 20<sup>th</sup> century.





Electric power began to develop in importance at the beginning of the 20<sup>th</sup> century. Larger municipalities located outside the Study Area were able to employ electric power before smaller towns and hamlets. Up until the 1900s, electricity was provided by private companies. Electric power in Huron County was established at various times. In 1907 the Ontario Hydroelectric Power Commission was created and many municipalities switched to using this service. The utility was owned by the province, and generated power at Niagara Falls.

Today, transmission lines traverse the Study Area at various locations. The most prominent line spans the Study Area in between Goshen Line and Babylon Line.

### **3.7 Rural Churches and Schoolhouses**

Early denominations represented in Huron County were Methodist, Presbyterian, Anglican, Lutheran, Baptist and Roman Catholic. Initially, many denominations had ministers travelling circuits due to low population and provided services wherever was possible; private residences, log school houses, and open fields among other popular locations. The construction of churches occurred early in the pioneer settlement process. Throughout the 1850s, churches constructed of log and frame began to be constructed throughout the countryside (Strong, 1986: 71).

Schoolhouses were scattered across the landscape of 19<sup>th</sup> century Huron County. The first school constructed in Huron County appeared as early as 1832 in the Town of Goderich (Huron County Historical Society, 1997: 42). Just north of the Study Area, a log school house was built in Francistown in 1838 (Belden, 1879: xx). Widespread construction of schools does not appear prevalent until the 1850s around the time of municipal organization. School sections were created shortly after the establishment of early municipalities within the Study Area.

During the mid-20<sup>th</sup> century, rural school consolidations began to take place and many schools were closed and students bussed to consolidated schools. The Stephen Township Central School, today the Stephen Central Public School, is one example of this and is located near Khiva, south of the intersection of Crediton Road and Goshen Line. Construction was completed in 1966, when the 12 room school was opened to the surrounding region (Mack, 1992: 313). Our Lady of Mount Carmel, part of the Huron-Perth Catholic District School Board, is another example of a consolidated school and is located on Bronson Line, north of Mount Carmel Drive.

### **3.8 Transportation**

#### **3.8.1 Roads**

The development of early transportation routes through Huron County was typical in that major roadways were constructed not in response to settlement, but instead occurred as a means of encouraging settlement. The Huron Tract Improvement Fund promised to provide financing for infrastructure in exchange for ownership of the land at greatly reduced rates (Scott, 1966: 14).



Although plagued with internal conflicts, the Canada Company did construct numerous roads throughout the region in order to encourage settlement. These roads provided settlers with access to the previously impenetrable forest. The London Road located within the Study Area is an example of one of these colonization roads.

The London Road was surveyed in 1829 to open settlement in the Huron Tract. The road ran from Clinton to London and although historical records conflict, it appears construction occurred between 1832 and 1833. The road travelled in a north-south direction through the centre of the Study Area parallel to the railway line. Initially a toll road, the tolls were abolished in 1873 when the County gravelled the road and transferred responsibility to the townships (Belden, 1879: iv). In 1927, the province assumed the road as part of the Elginfield to Clinton extension. It was renamed the King's Highway 4 and extended through to Bruce County. More than 60 percent of the highway was downloaded in the late 1990s, although the section between London and Clinton remains in tact (Bevers, 2011: online).

Construction of concession roads and side roads was largely the responsibility of individual settlers and later the municipalities. The roads which traverse the Study Area were initially constructed and named by local settlers (Scott, 1966: 68). These include the Goshen Line, Zurich-Hensall Road, and Dashwood Road among others. Typical of 19<sup>th</sup> century transportation routes, each road, although difficult to traverse, was essential to the development of early agricultural practices. Funding the maintenance of these roadways presented numerous challenges and as a result, many roadways initially used tolls to raise the funds. Toll roads This were abolished throughout Huron County in 1873 (Belden, 1879: iv).

Many 19<sup>th</sup> century roads were virtually impassable during the spring and fall. Rain and wet conditions made wagon travel notoriously difficult and time consuming. Roadways were most efficient in the summer and winter. Nonetheless, early roads allowed settlers access to land and created markets for their goods. Although, the railway eclipsed the significance of early transportation corridor in the 1860s, these routes was crucial in the settlement and development of early settler communities.

### **3.8.2 Railways**

Railways reduced shipping costs and speed increased substantially. Most significantly, the advent of railways removed the seasonal nature of early transportation. As a result, new markets became available for farm goods. Consequently, if the railway line bypassed a community, as was the case throughout much of the Study Area, entire communities disappeared as the population relocated to railway communities.

Within the Study Area there is one railway line; the London, Huron & Bruce Railway Company (Andreae, 1997: 129 and 199). The line ran parallel to the London Road through Exeter and Hensall. The development of each of these communities as shipping hubs was a direct result of the construction of the railway. The lack of growth in the mostly small communities within the Study Area was a direct result of the railway bypassing.

Growth of the surrounding communities within the Study Area was somewhat restricted as Exeter and Hensall, both located outside the Study Area, saw substantial commercial and industrial growth alongside railway construction.



Evidence of this somewhat halted development can be seen in the villages within the Study Area, specifically Zurich and Dashwood where pre-railway construction is evident throughout the architecture of the business districts (Plate 4). Without access to larger markets, communities directly within the Study Area were stagnant in growth throughout the late 19<sup>th</sup> and early 20<sup>th</sup> century. Comparable communities in other townships throughout the region initially expanded with railway construction and later contracted as railways were abandoned. As farmers had to reach out to larger communities outside of the Study Area to market their goods, communities within the Study Area remained relatively small and stagnant in growth.

The London, Huron & Bruce Railway Company line originated in Hyde Park and travelled through to Wingham in North Huron Township. The line was a branch line of the Great Western which serviced the mainline out of London. It was constructed in 1876 and designed to compete with the Grand Trunk line out of Goderich. In heated competition, both companies wanted to service the bustling Huron County through the boom years. As railway lines closed throughout the second half of the 20th century, similarly to the competition, the line was purchased by the Goderich-Exeter Railway Company Ltd. Today, only the portion of the line from Centralia to Clinton remains in service today

### **3.9 Urban Places**

Thirteen villages, hamlets or post offices were once located within the limits of the Study Area (Figure 2). Of these, Dashwood and Crediton represent the two villages in the Study Area. Eight hamlets were identified and include: Corbett, Greenway, Mount Carmel, Shipka, Elimville, Winchelsea, Farquhar, Woodham and Krikton. In addition, two former post office locations including Khiva and Harpley were included in this overview.

Post offices, usually in private residence or stores, were established throughout rural areas during the 19<sup>th</sup> century. The presence of a post office did not necessarily indicate the presence of a settlement, although many post offices within the Study Area were near to churches or a school. With the advent of rural mail delivery in the mid-1910s, most rural post offices were closed.

#### **3.9.1 Dashwood**

The Village of Dashwood is located between Highway 4 and Highway 21 along County Road 83 (modern names). It straddles the boundary line between the former townships of Stephen and Hay. The first settlers were brothers Absolam and Noah Fried who initially named the area Friedsburg. The name was changed when Noah opened the first post office in 1871 (Hay Township Book Committee, 1996: 92).

In hopes of establishing saw and grist mills, the brothers had initially settled in Centrailia. However, Dashwood was better suited due to its vicinity to running water (Huron Historical Notes 1975, 7-8). In addition to saw milling, a tanbark industry developed to supply tanneries. There were numerous merchants including a butcher, a wagon and carriage shop, a harness shop, a shoe store, hotels and likely multiple blacksmiths (Huron Historical Notes 1975, 9). Dashwood was incorporated as a village in 1899 with more than 100 residents.



In the late 20<sup>th</sup> century, Dashwood became a largely residential community. Many commercial activities have moved to larger urban areas, including Exeter. However, numerous services remain in Dashwood including a Community Centre and Medical Centre (Plate 1). Its population was 434 in 1976 (Carter, 1984: 291).



*Plate 1: Intersection of Dashwood Main and Centre Streets in Dashwood, looking south east a large, newly renovated multi-unit residential building.*

### **3.9.2 Corbett**

Corbett is located on the border of the former Stephen Township in Huron County and McGillivray Township in Middlesex County. It is located at the intersection of Corbett Line and Mount Carmel Drive (modern names).

The community was named for John Corbett, a prominent figure in Middlesex County, who moved to the area in 1840. Within the next two decades, Corbett owned and operated a saw mill, a grist mill and the village general store (Mack 1992:240). A hub of early settler activity given its location along a township line and its vicinity to Grand Bend, in the 1860s the community contained a prosperous carriage business, hotel and a two storey blacksmith shop (Mack 1992:240). By 1873, a post office was opened and the community was thriving (Carter, 1984: 260). In 1888 the Corbett Cheese and Dairy Company was founded and it operated until it 1938 when it burned down (Mack 1992:240).



In the 1920s, the post office closed and the size of the community began to decline. County Road 81 was improved and bypassed the community in 1965 following the provincial amalgamation of significant roadways (Mack, 1992: 242). Typical of many small communities throughout the Study Area, the community is primarily residential today and concentrated around the four corners of the main intersection (Plate 2).



*Plate 2: The intersection of Grand Bend Line and Corbett Road in Corbett, looking northeast.*

### **3.9.3 Mount Carmel**

The hamlet of Mount Carmel has gone through numerous name changes throughout its history. It is located at the intersection of Mount Carmel Drive and Bronson Line along the former township line between Stephen and McGillivray Township (modern names). The original post office, opened in 1867, was named Cranford only to be changed one year later to Offa (Carter, 1984: 663). In 1889, it was renamed Mount Carmel although it is sometimes referred to as Limerick (Carter, 1984: 663).

The community was founded largely by Irish immigrants and prospered during the 1860s with three hotels, a general store, a shoemaker, two blacksmith shops, two doctor's offices, a dressmaker shop and a hat shop (Mack 1992:238). Our Lady of Mount Carmel Church was built in 1887, which still remains today (Mack 1992:238). It continued to function as centre for the surrounding community throughout the 20<sup>th</sup> century.



### 3.9.4 Crediton

The Village of Crediton is located surrounding the intersection of Parr Line and Crediton Road (modern names). In 1850, Crediton became the second community in the township to have a school house (Carter, 1984: 272 and Mack 1992: 14). Originally known as Sweet's Corners, the first post office opened in 1861 (Figure 5).

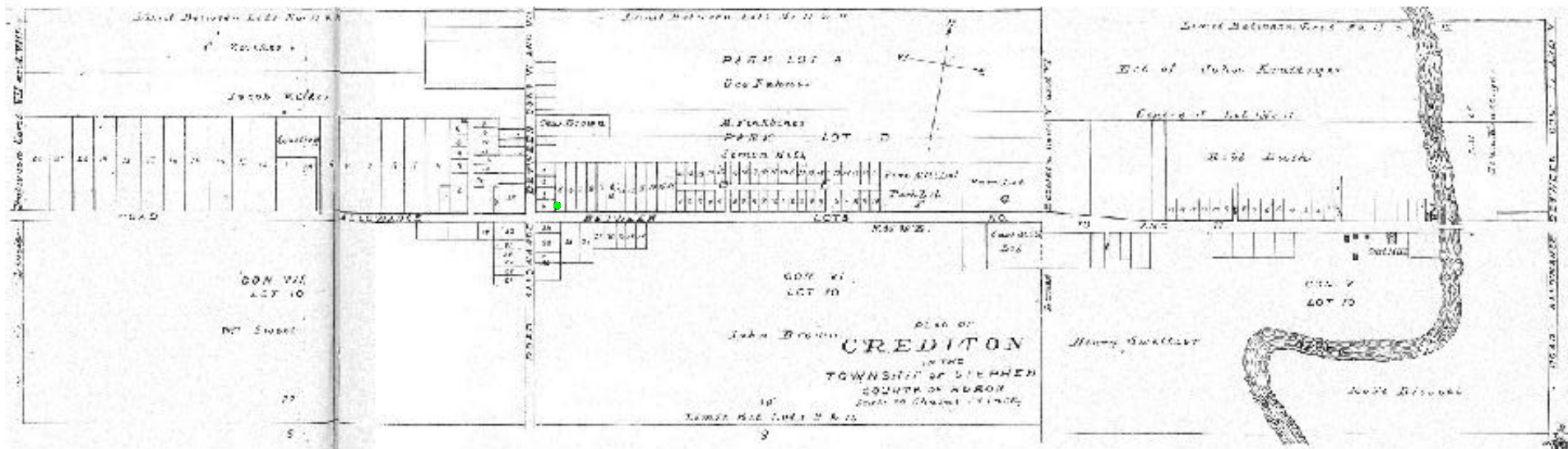
Within a decade, brickworks located just east of the village were well established. Crediton quickly expanded beyond the four corners of its major intersection in response to the growing brick and tile making industry located along the Ausable River to the east of the village, outside of the Study Area (Mack, 1992: 222). By the early 1860's Crediton had three blacksmiths, a cabinet maker, bricklayers, wagon makers, boot and shoe makers, a doctor and an inn keeper.

The population had grown from roughly 500 in 1879 to 1,000 by the early 1890s and local industry was thriving in response to a regional construction boom (Belden, 1879: xix and Carter, 272). Growth continued at such a strong pace that the community expanded and a second post office, aptly named Crediton East, was opened in 1898 to service various milling businesses and their employees (Carter, 1984: 272). The growth of Crediton continued into the early part of the 20<sup>th</sup> century.

As the economic boom of the late 19<sup>th</sup> and early 20<sup>th</sup> century slowed, so too did the demand for milling services. The East Crediton post office closed in 1917. The community of Crediton had an estimated population of 439 in 1976 and is likely less than that today (Carter, 1984: 272). The community is largely residential today but does contain social and religious institutions, including the Zion United Church and a large sports complex west of Crediton Road (Plate 3).



*Plate 3: Intersection of Crediton Road and Concession Road 7 in Crediton, looking east.*



- Approximate location of the Henry Eilber House (12 Victoria Street East, Crediton)

**REFERENCE**

Drawings based on: Belden, H. and Company 1879  
 Illustrated Atlas of Huron County.  
 1972 reprint. Ross Cumming, Owen Sound.



PROJECT	NEXTERA ENERGY CANADA, ULC GOSHEN WIND ENERGY CENTRE, HURON COUNTY, ONTARIO		
TITLE	CREDITON, 1879		
PROJECT NO.	10-15-14201	SCALE AS SHOWN	RBY/0.0
DESIGN	BC	23 Aug 2012	FIGURE: 5
CS	BC	23 Aug 2012	
CHECK	MR	23 Aug 2012	
REVIEW			





### **3.9.5 Greenway**

The community of Greenway, also known as Boston, is located at the corner of Bullock Line and Greenway Road one concession west of Corbett (modern names). It is situated on the former border of Stephen Township in Huron County and McGillivray Township in Middlesex County. A post office was opened in the community in 1879 (Carter, 1984: 128).

The community was a hub of early milling activity. Businesses were established in the early 1870s and included two general stores, a chopping mill, a shingle mill, a blacksmith shop, a woodworking shop, a carpenter and a shoemaker (Mack 1992:242). The community thrived like so many Ontario hamlets during the 19<sup>th</sup> century and fell into decline in the early part of the 20<sup>th</sup> century.

Unique to Greenway was the small-scale oil exploration which occurred near the community in the mid-20<sup>th</sup> century. Numerous wells were drilled, but only three proved to be successful (Mack, 1992: 242). In 1965, County Road 81 (Grand Bend Line) was redirected to by-pass the community (Mack 1992: 242).

Today the community appears entirely residential (Plate 4).



*Plate 4: The intersection of Greenway Drive and Bullock Line in Greenway, looking northwest.*





### **3.9.6 Khiva**

Khiva is located at the intersection of Dashwood and Crediton Roads (modern names). Both roads were used to access local mills and brickworks. As was common throughout the region, a hotel was established in the late 1860s to accommodate the numerous travelers through the region. Later relocated to the north side of the road, the hotel was expanded and remained in operation throughout the 19<sup>th</sup> century (Mack, 1992: 609).

In the 1870s, a post office was established and a blacksmith shop was opened (Mack 1992:232). The post office was closed in 1914 along with many others across the township (Carter, 1984: 609).

Today, no evidence remains of the hamlet (Plate 5).



*Plate 5: Intersection of Bronson Line and Crediton Road in Khiva, looking northeast.*

### **3.9.7 Shipka**

The hamlet of Shipka is located at the intersection of Crediton Road and Shipka Line (modern names) in the former Stephen Township (Plate 6). A post office was opened in the community in 1879 with Frederick Heitzman as the first Postmaster (Carter, 1984: 1134). The post office closed 24 years later with the advent of rural mail delivery (Carter, 1984: 1334).



The hamlet had its origins in 19<sup>th</sup> century milling. The first saw mill in the vicinity of Shipka was constructed by Charles Eilber in 1876 (Mack, 1992: 234). Within a decade, Shipka contained three additional saw mills, a flax mill, two stores, a hall, hotel, apple-butter factory, blacksmith shop and other 19<sup>th</sup> century services such as a tailor, shoemaker and harness maker (Mack, 1992: 234). The population was 100 in 1892. By 1976 the population had decreased to 34 (Carter, 1984: 1135).

Today, the hamlet appears largely residential; automotive repair shops remain as commercial enterprises.



*Plate 6: Intersection of Crediton Road and Shipka Line in Shipka, looking northwest.*

### **3.9.8 Harpley**

The Harpley post office was established along Grand Bend Line in between South Road (or Side Road 5) and Crediton Road (modern names). Opened in 1872, the first Postmaster was Thomas H. Hayter (Carter, 1984: 510). The office was associated with local milling activities and closed in 1913 (Carter, 1984: 510).

The Harpley post office was located in close vicinity to the Greenway and Harpley post offices. Two lumber mills were once located in close vicinity (Mack, 1992: 245). A sharp decrease in population occurred in the late 19<sup>th</sup> century; only an estimated 10 people remained in the community in 1893 (Carter, 1984: 510). Much of the population decrease has been attributed to the growth of Grand Bend, the nearest village located six kilometres northwest of Harpley. Today, there is no visible evidence of the community.



### **3.9.9 Elimville**

The hamlet of Elimville is located near the intersection of Kirkton Road and Elimville Line in the former Usborne Township (modern names), one concession west of the hamlet of Winchelsea (Plate 7). A post office was opened in the community in 1869 with Henry Taylor as the first Postmaster (Carter, 1984: 360). The post office closed in 1919 (Carter, 1984: 360).

Elimville, also spelled Elmsville and Elmville, was described as the municipal capital of Usborne Township in 1879 (Belden, 1879: xxii). The township hall was constructed in Elimville in 1861 and council meetings were held there for the next two decades (Bilyea, 1989: 20). By the late 19<sup>th</sup> century, the community contained a general store, two hotels, an ashery, cooperage, blacksmith, wagon maker, tailor, shoemaker, doctor, drug store and three churches (Bilyea, 1989: 20). Members of the community attempted to attract other businesses, a soap factor and flour mill among them, but competition from nearby Exeter halted construction.

The population decreased by nearly 60 percent over the hundred years between 1875 and 1976 (Carter, 1984: 360). As a result of the shift to larger urban centres, very few commercial services remain in the community.

Today, Elimville is largely residential. The community is concentrated along Elimville Line, east of Kirkton Road where a church remains an active.



*Plate 7: Intersection of Kirkton Road and Elimville Line in Elimville, looking south.*



### 3.9.10 Winchelsea

The hamlet of Winchelsea is located one concession east of Elimville along Kirkton Road where it intersects Hern Line (modern names) (Plate 8). The post was established in 1859 with A. Smith as its first Postmaster (Carter, 1984: 1323). The office was closed in 1914, five years before the Elimville office (Carter, 1984: 1323).



*Plate 8: Intersection of Kirkton Road and Hern Line in Winchelsea, looking west.*

The 19<sup>th</sup> century community was closely associated with being only two kilometres apart. Some of these services included a creamery, a beef-ring, a school, and a general store (Bilyea, 1989: 22). The population of Winchelsea declined sharply in the latter half of the 20<sup>th</sup> century, although a slow movement of people had begun as early as the 1910s.

Today, the community is primarily residential and consists of numerous 19<sup>th</sup> century homes.



### **3.9.11 Farquhar**

The hamlet of Farquhar is located at the intersection of Highway 83 (Thames Road) and Sunshine Line (modern names). The post office, originally named Taunton, was established in 1857 with William Edmond as the first Postmaster (Carter, 1984: 1169). Five years later, the post office name was changed to Farquhar, which the hamlet remains associated with today. The post office was closed in 1913 (Carter, 1984: 1169).

Throughout the 19<sup>th</sup> century, Farquhar contained a general store, cheese factory, and prominent insurance company (Scott, 1966: 169).

Today, the hamlet appears completely residential.

### **3.9.12 Woodham**

The hamlet of Woodham is located at the intersection of Highway 23 (Kirkton Road) and 6<sup>th</sup> Line. The hamlet straddles the county line between the former Usborne Township, Huron County, and former Blanshard Township, Perth County. A post office was opened in 1865 with Jonathon Shier as the first Postmaster (Carter, 1984: 1333). The post office remains in operation.

Today, the hamlet appears primarily residential, however, there is a gas station and convenience store located on the on the west side of Highway 23.

### **3.9.13 Kirkton**

The village of Kirkton is located two kilometres north of Woodham along Highway 23, in the vicinity of where Highway 23 and County Road 8 (Kirkton Road) intersect (modern names). Similar to Woodham, Kirkton straddles the county line between the former Usborne Township, Huron County, and former Blanshard Township, Perth County. It also located on the Perth County side of Highway 23. A post office was opened by 1879 and numerous 19<sup>th</sup> century services were located within the community.

Today, the village is largely residential but also contains numerous commercial and social services including multiple stores, churches and a community centre among other services. The post office remains active.



## **4.0 DESCRIPTION OF CULTURAL FEATURES**

### **4.1 Cultural Heritage Features at the Project Location**

The criteria for evaluating the cultural heritage value or interest of historic resources and landscapes has been developed by the MTCS and published as *Ontario Regulation 9/06* (see section 2.3.2 of this report). At the time of the field survey a total of 60 sites at the Project Location were visually identified to be greater than 40 years old. Each was photographed and evaluated according to *Ontario Regulation 9/06*. This material is included in Appendix A along with a map (Tile 1) which indicates the location of each feature. As discussed in Section 2.3, Golder consulted local historians and knowledgeable individuals as part of the identification of potential heritage resources within the Study Area. Access to private properties was not available as part of this work and all identification was undertaken from public road allowances.

A total of 60 properties at the Project Location were identified to contain residential and/or agricultural structures over the age of 40 years. As is typical in rural landscapes, the residential structures tend to be located near the front of the property with the barns adjacent to the residence. These farmsteads are primarily located along concession roads. This reflects the original historic survey patterns within the landscape.

Due to their size, barns contribute in a very visible manner to the late 19<sup>th</sup> and early 20<sup>th</sup> century agricultural character of the Study Area. Of the 43 properties identified to contain agricultural structures more than 40 years of age, 30 date from the 19<sup>th</sup> or early 20<sup>th</sup> century. Most have 20<sup>th</sup> century additions such as concrete silos, single storey metal sheds and metal bins. This is reflective of an agricultural boom followed by relatively stable agricultural production and an increase in livestock production. Barns should be considered as potentially significant cultural resources because this type of structure is no longer viable for modern agriculture and are at risk through abandonment or removal. The barns and agricultural structures included in this inventory are typical of structures that are still prevalent across southwestern Ontario.

Residential construction throughout the Project Location was overwhelmingly one and half storey structures, representing 44 of the identified residential structures. The remaining 11 residential structures are two storeys. Generally, where a date of construction was estimated, two eras of construction were apparent at the Project Location; 1860s – 1880s and 1890s – 1920s. The predominantly modest size of structures found throughout the Project Location is reflective of economic conditions historically present throughout the region as well as the general prosperity of agricultural production at the Project Location.

Stylistically, a few houses identified in the inventory exhibit design elements incorporated from high style architecture, but in most cases the specific elements have been used in a distinctly vernacular environment and no distinct pattern of style was identified. Gothic Revival, Italianate, and Foursquare designs certainly influenced residential design, however, throughout the Study Area and at the Project Location in particular, each was adapted to suit the vernacular style. Often, elements of high style were incorporated into rural construction as a sign of social prominence and economic affluence. Houses, like agricultural structures, contribute to the late 19<sup>th</sup> and early 20<sup>th</sup> century agricultural character of the Study Area.



Roughly 30 percent of residential structures at the Project Location contain vernacular gothic influences, extensively used throughout Ontario between 1860 and 1900. Of the two storey residential structures, more than 50 percent exhibit vernacular interpretations of the Queen Anne style popular between 1880 and 1920. While design elements have been incorporated from high style architecture, the specific elements have been used in a distinctly vernacular environment. Often, elements of high style were incorporated into rural construction as a sign of prominence and economic affluence and were indicative of the prosperity of individual farmers and/or eras of profitable agriculture. Collectively, these houses, like the barns, contribute to the 19<sup>th</sup> and early 20<sup>th</sup> century agricultural character of the Study Area.

## **4.2 Cultural Heritage Landscapes at the Project Location**

Cultural heritage landscapes are specific geographical areas of heritage value as defined by Section 6.0 of the Provincial Policy Statement. In many cases these areas comprise of landscapes which have been highly modified and remain today as remnants of past human activity. Cultural heritage landscapes also comprise entire communities and particular patterns of settlement as well as more vernacular spaces including agricultural activities alongside urban developments. For the purposes of this assessment, the cultural heritage landscape boundaries were defined as the Study Area and only the landscapes which lie within the Study Area were described and evaluated.

Under the *Ontario Heritage Act*, a cultural heritage landscape can be designated as an individual unit or as part of a heritage conservation district. There are no cultural heritage landscapes located within the Study Area designated under the *Ontario Heritage Act*.

Three cultural heritage landscapes have been identified within the Study Area (Figure 6). The most predominant landscape throughout the Study Area is an evolved vernacular rural landscape. The second is characterized by swampy and man-made wetlands. The third is formed by a prominent hydro corridor.

The evolved vernacular rural landscape can be characterized by land usage and land division spanning the majority of the Study Area. Land usage has historically been, and continues to be, primarily mixed-use agricultural characterized by pasture, cash crops, woodlots, drainage ditches and multiple small rural villages and hamlets of a variety of sizes which are largely residential in nature today. This land use has been defined by historic survey patterns which have remained relatively intact.

The initial survey generated the layout of the region, creating roadways and dictating the grid from which settlement patterns were framed. As a result, the farmsteads are primarily clustered along the concession roads and woodlots are located towards the back of the properties. Farmsteads represent changing eras of rural land use from the mid-19<sup>th</sup> century onwards as is seen in the variety of domestic architecture, barn design and the expanding size of agricultural activities.

The human response to the wet and swampy conditions was a series of drainage ditches. These numerous ditches are found throughout the Study Area (Plate 9). Visually distinct due to the straight cuts made in the surrounding landscape, these ditches are a common flood aversion technique throughout the province.



*Plate 9: Drainage ditch crossing beneath the Zurich Hensall Road between Parr Line and Babylon Line, looking south.*

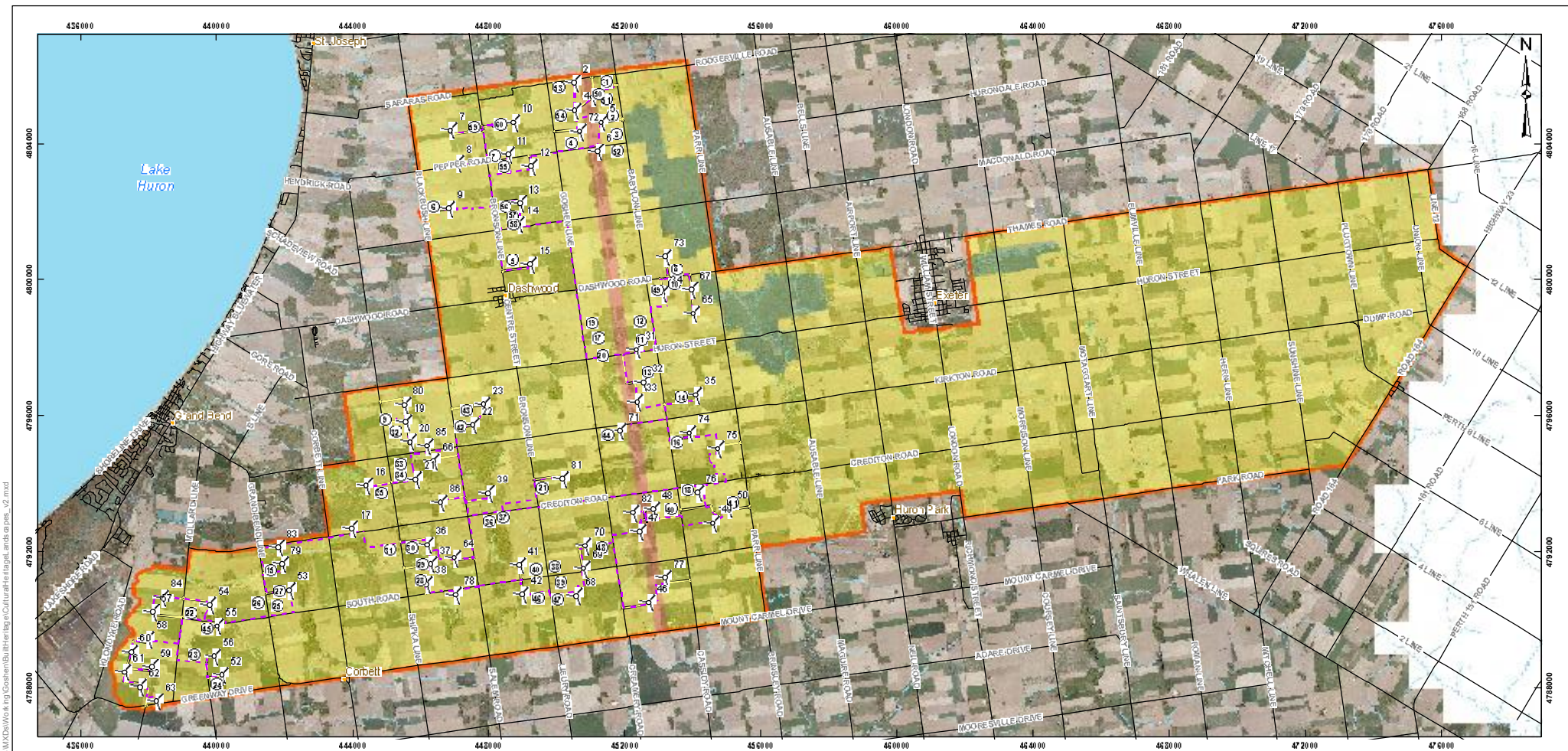
The second cultural heritage landscape identified within the Study Area is swampy and man-made wetlands formed by the Hay Swamp and the Morrison Dam reservoir. Primarily located outside of the Study Area, a portion of the Hay Swamp occupies a segment of the north and northeast corner of the Study Area (Plate 10). The landscape can be characterized as densely forested with relatively flat and low marshlands. The swamp lands appear typical of those found throughout the region and more broadly, southwestern Ontario. The ecological significance of the swamp lands located within the Study Area is assumed at this time to be the matter of Natural Heritage and not of cultural heritage value or interest.

The man-made Morrison Dam reservoir is located within the Study Area, east of Exeter and is maintained by the Ausable Bayfield Conservation Authority (ABCA) (Plates 11 and 12). Much like the Hay Swamp, the ecological significance of the reservoir located within the Study Area is assumed at this time to be the matter of Natural Heritage and not of cultural heritage value or interest.

The third landscape identified within the Study Area is a hydro corridor. This represents a prominent feature in the rural landscape, particularly given the flat landscape within the Study Area. A single visually prominent corridor crosses through the entire Study Area from north to south between Goshen and Babylon Lines. It contains a single row of hydro towers (Plate 13).

The Project Location is comprised entirely of the evolved vernacular rural landscape which covers the vast majority of the Study Area.





**LEGEND**

- Feature Site Location
- Roads
- Watercourse
- Waterbody
- Wet and
- Study Area
- Turbine
- Collector Cable
- Access Road
- Hydro Corridor
- Swamp and Natural Lands
- Evolved Vernacular Rural Landscape

**REFERENCE**

Base Data - MNR NRMS, obtained 2004, CANMAP v2006.4  
 Produced by Golder Associates Ltd under licence from  
 Ontario Ministry of Natural Resources, © Queens Printer 2008  
 Projection: Transverse Mercator Datum: NAD 83 Coordinate System: UTM Zone 17



PROJECT  
 NEXTERA ENERGY CANADA, ULC  
 GOSHEN WIND ENERGY CENTRE,  
 HURON COUNTY, ONTARIO

TITLE  
**CULTURAL HERITAGE LANDSCAPES**



PROJECT NO.	10-15-14201	SCALE AS SHOWN	REV. 0.0
DESIGN	BC 12 Aug 2012		
GIS	BC 24 Sep 2012		
CHECK	MR 24 Sep 2012		
REVISED			

FIGURE 6

G:\Projects\2010\10-15-14201\_Jericho\_Bluewater\_Goshen\GIS\MXDs\Work\Goshen\BullHeritageCulturalHeritageLandscape.aprx\_v2.mxd



*Plate 10: A corner of the Hay Swamp Complex at the intersection of Parr Line and Dashwood Road, part of the Ausable Bayfield Conservation Authority Forest, looking northeast.*



*Plate 11: Morrison Dam reservoir, east of Exeter, looking east from Morrison Line.*



*Plate 12: Morrison Dam, east of Exeter, looking downstream from Morrison Line.*



*Plate 13: Hydro corridor, looking south from Dashwood Road, between Goshen Line and Babylon Line.*



## 5.0 ANALYSIS OF CULTURAL FEATURES

### 5.1 Protected Properties

There are various means of protecting properties of cultural heritage value as summarized in Table 2. As part of the requirements of O. Reg. 359/09, s.19, three interested parties must be contacted to confirm the presence of protected properties within the Study Area. The Municipalities of Bluewater and South Huron were contacted with regards to the availability of a municipal inventory, registry or list of built heritage resources. Both municipalities reported that they do have active or pending inventories, registries, lists or easements. The Ministry of Tourism and Culture (MTC) as well as the Ontario Heritage Trust (OHT) also have tools with which a property can be designated or become the subject of an agreement, covenant or easement. Both bodies were contacted with regards to the presence of such properties within the Study Area.

Arlene Parker, Planning Coordinator with the Municipality of Bluewater provided the Municipal Registry for the Municipality of Bluewater. It contains three designated heritage properties and one heritage conservation district, all located in the community of Bayfield, outside of the Study Area. According to information provided by the municipality, the Study Area does not contain protected properties listed in Table 2.

Trista Russell, Planning Assistant with the Municipality of South Huron, provided a list of heritage properties identified in the South Huron Official Plan. It contains four identified heritage properties, three of which are located outside of the Study Area. According to information provided by the municipality, the Study Area contains one protected property as described in Table 2 and further in Section 5.1.1.

Sean Fraser, Manager of Acquisitions and Conservation Services for the Heritage Programs and Operations Branch of the OHT confirmed that there are no properties within the Study Area subject to OHT conservation easements. Laura Hatcher, Heritage Planner with the MTC, confirmed that there are no provincially designated properties within the Study Area, nor are there pending or ongoing provincial designations within the Study Area.

**Table 2: O. Reg. 359/09, s. 19**

	<b>Description of property.</b>	<b>Person or body whose authorization is required.</b>	<b>Verification Method</b>
1.	A property that is the subject of an agreement, covenant or easement entered into under clause 10 (1) (b) of the <i>Ontario Heritage Act</i> .	Ontario Heritage Trust (OHT)	Contacted OHT
2.	A property in respect of which a notice of intention to designate the property to be of cultural heritage value or interest has been given in accordance with section 29 of the <i>Ontario Heritage Act</i> .	Municipality that gave the notice	Contacted municipalities
3.	A property designated by a municipal by-law made under section 29 of the <i>Ontario Heritage Act</i> as a property of cultural heritage value or interest.	Municipality that made the by-law	Contacted municipalities



## HERITAGE ASSESSMENT REPORT GOSHEN WIND ENERGY CENTRE

	Description of property.	Person or body whose authorization is required.	Verification Method
4.	A property designated by order of the Minister of Culture made under section 34.5 of the <i>Ontario Heritage Act</i> as a property of cultural heritage value or interest of provincial significance.	Minister of Tourism, Culture and Sport	Contacted MTCS
5.	A property in respect of which a notice of intention to designate the property as property of cultural heritage value or interest of provincial significance has been given in accordance with section 34.6 of the <i>Ontario Heritage Act</i> .	Minister of Tourism, Culture and Sport	Contacted MTCS
6.	A property that is the subject of an easement or a covenant entered into under section 37 of the <i>Ontario Heritage Act</i> .	Municipality that entered into the easement or covenant	Contacted municipality
7.	A property that is part of an area designated by a municipal by-law made under section 41 of the <i>Ontario Heritage Act</i> as a heritage conservation district.	Municipality that made the by-law	Contacted municipality
8.	A property designated as a historic site under Regulation 880 of the Revised Regulations of Ontario, 1990 (Historic Sites) made under the <i>Ontario Heritage Act</i> .	Minister of Tourism, Culture and Sport	Contacted MTCS

### 5.1.1 The Henry Eilber House – The Village Post Bed and Breakfast, 12 Victoria Street East, CREDITON

#### Description

The Henry Eilber House is designated under Part IV, of the *Ontario Heritage Act*. The reasons for designation were not provided, however, the property has design or physical value as well as historical or associative value according to *Ontario Regulation 9/06*.

The house and adjacent office were built by Henry Eilber in 1888. Local construction materials were used in addition to the German-imported stain glass windows (Plate 16). Eilber was a prominent businessman and the proprietor of a very successful local insurance company. He played an important role in 19<sup>th</sup> century politics as the Clerk for Stephen Township and was later elected a Member of Provincial Parliament.



### ***Relationship to the Project Location***

This designated house is located east of the Parr Line on Crediton Road in the Village of Crediton (Plate 16). Therefore it is not at the Project Location or adjacent to or abutting the Project Location (Figure 2).



*Plate 14: The Henry Eilber House, 12 Victoria Street East, Crediton*

## **5.2 Inventory of Cultural Features at the Project Location**

Evaluation according to *Ontario Regulation 9/06* was based on extensive historical research. This research facilitated a full and developed understanding of the Study Area, specifically, patterns of settlement, agricultural trends and subsequent growth. Each potential resource was visually evaluated according to criteria outlined in *Ontario Regulation 9/06* as Design or Physical Value (Section 1) and Contextual Value (Section 3). Identification of Associative Value (Section 2) was based on public consultation with local historians as detailed in Section 2 and 5.1, as well as a detailed study of local publications. In order to identify potential associative value, research focused on properties which the historical community, specifically the local historians and members of the Huron County Historical Society, may have deemed of interest through consultation and in published histories.



The results of the background research and review of secondary source information has concluded that the Study Area has its historic origins in 19<sup>th</sup> century survey and settlement. Settlement and development of agriculture in Huron County moved from pioneer farming in the early 19<sup>th</sup> century to wheat growing and mixed farming in the late 19<sup>th</sup> century through to the present. The surviving farmsteads located within the Study Area represent changing eras of rural change from the mid-19<sup>th</sup> century onwards.

Each site was evaluated according to *Ontario Regulation 9/06* (see Section 2.2.2). All structures identified in the inventory are characteristic of the evolving vernacular rural landscape of the Project Location which has changed and adapted over time. Various expansions and more modern constructions are balanced with contractions in size of houses and barns. The structures are visual representations of the rural nature of the landscape and link modern uses with historic structures.

Of the 98 structures, or group of structures, evaluated, 71 (35 houses and 36 barns or barn complexes) were determined to have some cultural heritage value or interest according to *Ontario Regulation 9/06*. Where cultural heritage value or interest was determined, the potential direct and indirect impacts of the undertaking were assessed as described in Section 6.0.

### 5.3 Cultural Heritage Landscapes at the Project Location

In order to determine the potential significance of the identified cultural heritage landscapes, each was evaluated against *Ontario Regulation 9/06* (See Table 3). As defined by the Ontario *Provincial Policy Statement*, significant means cultural landscapes resources that are valued for the important contribution they make to our understanding of the history of a place, an event, or a people.

The Project Location lands remain associated with various usages and continue to adapt to changing conditions. The vernacular rural landscape as well as the swamp and natural lands and hydro corridor are typical of landscapes which can be found throughout southwestern Ontario. As such, it was determined that the identified cultural heritage landscapes do not contain cultural heritage value or interest.

Therefore, no cultural landscapes located within the Study Area or at the Project Location were determined to have cultural heritage value or interest.

**Table 3: Evaluation of Cultural Heritage Value or Interest According to O.Reg. 9/06**

<b>Criteria</b>	<b>Vernacular Rural Landscape</b>	<b>Swamp Lands</b>	<b>Hydro Corridor</b>
<i>Design Value</i>	None identified	None identified	None identified
<i>Historic or Associative Value</i>	None identified	None identified	None identified
<i>Contextual Value</i>	None identified	None identified	None identified





## **5.4 Summary**

### **5.4.1 Cultural Heritage Features**

All individual cultural features more than 40 years old located within the Project Location were inventoried and photographed. The 98 structures (55 houses and 43 barns or barn complexes) that were determined to have general historical interest as they contribute to the character of the vernacular rural landscape. When applying the criteria set out in *Ontario Regulation 9/06, 71* (35 houses and 36 barns or barn complexes) were identified to have potential cultural heritage value or interest.

### **5.4.2 Cultural Heritage Landscapes**

The Project Location lands were determined to contain a single evolved vernacular rural cultural heritage landscape consisting of a homogeneous land use pattern of pastures, agricultural fields, woodlots, drainage ditches and associated farmsteads. This landscape is typical of the surrounding region and found throughout southwestern Ontario. Evaluation according to *Ontario Regulation 9/06* concluded that the landscape was not of cultural heritage value or interest.



## 6.0 IMPACT ASSESSMENT

### 6.1 Potential Impacts

Where potential cultural heritage value or interest was determined according to *Ontario Regulation 9/06*, the anticipated direct and indirect impacts were evaluated. Where value or interest could not be determined due to extensive foliage coverage, the impacts were also evaluated.

These impacts were identified according to InfoSheet #5 in *Heritage Resources in the Land Use Planning Process, Cultural Heritage and Archaeology Policies of the Ontario Provincial Policy Statement, 2005 (MTC, 2006)*. Tables 4 and 5 outline the impacts identified by MTCS, and their relationship to the project.

**Table 4: Potential Direct Impacts and Relevance to the Project**

Direct Impacts	Relevance to this Project
<b>Destruction</b> - of any, or part of any, significant heritage attribute or feature	<b>None Anticipated:</b> no heritage attribute or feature to be demolished
<b>Alteration</b> - that is not sympathetic, or is incompatible, with the historic fabric or appearance	<b>None Anticipated:</b> no alterations anticipated

**Table 5: Types of Potential Indirect Impacts and Relevance to the Project**

Indirect Impacts	Relevance to this Project
<b>Shadows</b> - created that alter the appearance of a heritage attribute or change the visibility of a natural feature or plantings, such as a garden	<b>None Anticipated:</b> substantial distance from turbines
<b>Isolation</b> - of a heritage attribute from its surrounding environment, context or a significant relationship	<b>None Anticipated:</b> nature of wind turbine operations will not isolate features
<b>Land Disturbance</b> - such as a change in grade that alters historic patterns of topography or drainage	<b>None Anticipated:</b> no significant or permanent alteration to land
<b>A Change in Land Use</b> - such as rezoning a battlefield from open space to residential use, allowing new development of site alteration to fill in the formerly open spaces	<b>None Anticipated:</b> existing land use is agriculture with modern industries located throughout including some solar energy production



<b>Indirect Impacts</b>	<b>Relevance to this Project</b>
<b>Obstruction</b> - of significant views or vistas from, within, or to a built and natural feature	<b>None Anticipated:</b> no significant views have been identified

## 6.2 Cultural Heritage Features at the Project Location

A total of 71 features were determined to have cultural heritage value or interest. Following an impact analysis, it was determined that no direct or indirect impacts are anticipated and therefore, no further mitigation is recommended.

## 6.3 Cultural Heritage Landscapes at the Project Location

As no cultural heritage value or interest was determined, there are no adverse impacts anticipated to the cultural heritage landscape.



## **7.0 RECOMMENDATIONS**

A detailed inventory was undertaken to identify and evaluate potential heritage resources at the Project Location. Through a windshield survey, a total of 60 properties at the Project Location were identified to contain residential and/or agricultural structures over the age of 40 years. These properties contained a total of 98 potential heritage resources; 55 residences and 43 barns / barn complexes. Of these potential resources, 71 (35 houses and 36 barns) were identified to have cultural heritage value or interest according to *Ontario Regulation 09/06*.

The Project Location was determined to represent a single cultural heritage landscape that is consistent with the historic division of land and can be characterized by a homogeneous land use pattern of pastures, agricultural fields, woodlots, drainage ditches and associated farmsteads. Due to the typical nature of the landscape, cultural heritage value or interest was not identified according to *Ontario Regulation 9/06*.

No further mitigation is recommended as it was determined that there are no anticipated direct or indirect impacts as a result of the undertaking. The recommendations contained in this report are based on current provincial regulations and guidelines pertaining to the approvals process for wind energy projects in Ontario.

### **GOLDER ASSOCIATES LTD.**

Jeffery Muir, B.A.  
Project Archaeologist

Christopher Andreae, Ph.D.  
Associate, Senior Built Heritage Specialist

MNR/CAA/JM/slc/sll

Golder, Golder Associates and the GA globe design are trademarks of Golder Associates Corporation.

\\golder.gds\gal\London\active\projects - other offices\mississauga\2010\10-1151-0201- nextera - bluewater\_goshen\_jericho wind farms\nextera - goshen\built heritage\reports\1011510201-3200-r01 sept 24 12 aecom heritage goshen huron.docx



## 8.0 REFERENCES

### 8.1 Published Material

Andreae, Christopher

1997 *Lines of Country: An Atlas of Railway and Waterway History in Canada*. The Boston Mill Press, Erin.

AECOM Canada Ltd.

2012a *Construction Plan Report*. Prepared for Ministry of the Environment. In progress.

2012b *Design and Operations Report*. Prepared for Ministry of the Environment. In progress.

2012c *Decommissioning Plan Report*. Prepared for Ministry of the Environment. In progress.

2012d *Project Description Report*. Prepared for Ministry of the Environment. In progress.

Belden, H. and Company

1879 *Illustrated Historical Atlas of the County of Huron*. 1972 reprint. Ross Cumming, Owen Sound.

Carter, Floreen Ellen

1984 *Place Names of Ontario*. Volume 2. Phelps Publishing Company, London.

Chapman, Lyman John and Donald F. Putnam

1984 *The Physiography of Southern Ontario*. 3rd ed. Ontario Geological Survey Special Volume 2. Ontario Ministry of Natural Resources, Toronto.

Coleman, Thelma

1978 *The Canada Company*. Stratford: County of Perth & Cumming Publishers.

Dean, W.G. (editor)

1969 *Economic Atlas of Ontario*. University of Toronto, Toronto.



Friends of the Old Ausable Channel

n.d. *Old Ausable Channel – History*. Available online <http://www.oldausablechannel.ca/history.html>.

Golder Associates Ltd.

2012 *Stage 1 Archaeological Assessment, NextEra Energy Canada, ULC, Goshen Wind Energy Centre, Huron County, Ontario*. Report submitted to the Ministry of Tourism and Culture, Toronto.

Huron County Historical Society

2008 "Early Huron Industries Part 1." *Huron Historical Notes*.

Hay Township Book Committee

1996 *Hay Township Highlights: 150 Years of Diversified Progress*. The Alymer Express Ltd., Zurich.

Hill, Nicholas.

1979 *Historic Streetscape of Huron County*. Middlesex Printing Co., London.

Lee, Robert C.

2004 *The Canada Company and the Huron Tract, 1826 – 853*. Natural Heritage Books, Toronto.

Mack, Susan Murtiel

1992 *The History of Stephen Township*. The Corporation of the Township of Stephen and the Alymer Express Ltd., CREDITON.

Ministry of Tourism and Culture

2006 *Ontario Heritage Tool Kit*. Queen's Printer for Ontario.

Morris, J.L.

1943 *Indians of Ontario*. 1964 reprint. Department of Lands and Forests, Government of Ontario.



Scott, James

1954 *Huron County in Pioneer Times*. Seaforth: The Huron Expositor.

1966 *The Settlement of Huron County*. Toronto: The Ryerson Press, 1966.

Smith, W. H.

1851 *Canada: Past, Present and Future, Being a Historical, Geographical, Geological and Statistical Account of Canada West*. Volume 2. Thomas Maclear, Toronto.

Strong, Ken

1986 "Rural Churches in Huron County." *Huron Historical Notes*: 70-71.

Bilyea, A.

1989 "The Story of Elimville." *Huron Historical Notes*: 20-22.

## **8.2 Online Material**

Archives of Ontario.

n.d. *Ontario Government Agency History* (CA291, BA86, AA47). Accessed online January, 2011.

Beavers, Cameron

2011 *The History of Ontario's King's Highways*. <http://www.thekingshighway.ca/> (accessed November 2011).

Friends of the Old Ausable Channel

n.d. *Old Ausable Channel – History*. <http://www.oldausablechannel.ca/history.html> (accessed December 2011).

Natural Resources Canada

2008 "Rail Transportation Infrastructure Map." *Natural Resources Canada*. <http://atlas.nrcan.gc.ca> (accessed March 18, 2011).



Statistics Canada

2006 "Agriculture Community Profiles." *Statistics Canada*. February 5. <http://www.statcan.gc.ca/bsolc/olc-cel/olc-cel?catno=95-631-XWE&lang=eng> (accessed November, 2011).

### **8.3 Official Plan Material**

Huron County

2010 *Huron County Official Plan*. Available online.

Municipality of Bluewater

2005 *The Municipality of Bluewater Official Plan*. Available online.

Municipality of South Huron

2006 *The Municipality of South Huron Official Plan*. Available online.

### **8.4 Inventory Material**

Huron County

n.d. *Huron County's Interactive WebGIS*. Accessed online at <http://www.huroncounty.ca/plandev/gis.php>. Last accessed, November, 2011.

McAlester, Virginia and Lee

2009 *A Field Guide to American Houses*. Alfred A. Knoph, New York.

Noble, Allen G.

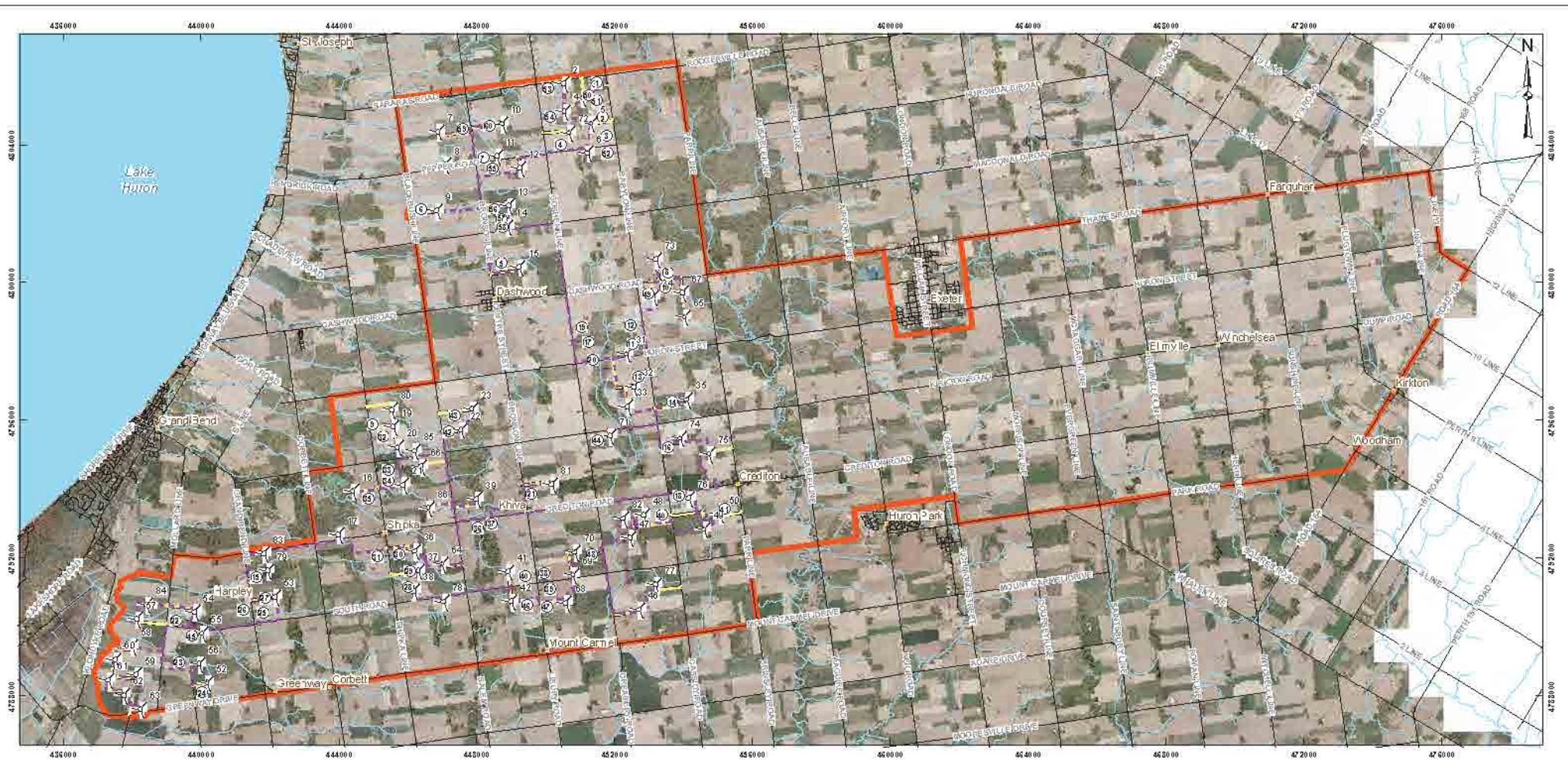
1984 *Wood, Brick, and Stone: The North American Settlement Landscape*. Volume 2. The University of Massachusetts Press, Amherst.





# **APPENDIX A**

## **Cultural Heritage Inventory**



**LEGEND**

- Feature Site Location
- Roads
- Watercourse
- Waterbody
- Wet and
- Study Area
- ⚙ Turbine
- Collector Canal
- Access Road

**REFERENCE**

Base Data - MNR NRVIS, obtained 2004, CANMAP v2006.4  
 Produced by Golder Associates Ltd. under license from  
 Ontario Ministry of Natural Resources, © Queens Printer 2008  
 Projection: Transverse Mercator Datum: NAD 83 Coordinate System: UTM Zone 17



PROJECT		NEXTERA ENERGY CANADA, ULC GOSHEN WIND ENERGY CENTRE, HURON COUNTY, ONTARIO	
TITLE		LOCATION OF STRUCTURES FOR CULTURAL FEATURE INVENTORY	
PROJECT NO.	10-15-10291	SCALE AS SHOWN	REV. 00
DESIGN	BC 29 Aug 2012		
GIS	BC 24 Sep 2012		
CHECK	MR 24 Sep 2012		
REVISION			
			<b>TILE 1</b>



**APPENDIX A  
BUILT HERITAGE INVENTORY**

**Site #1 – 38309 Rogerville Road (Municipality of Bluewater)**



**Date:** Late 19<sup>th</sup> century

**Description:** One and one half storey side gabled house with medium roof pitch, modern siding and undetermined foundation. Symmetrical in design. Rear addition, red brick chimney with modern elements, and covered porch on the front facade.

**Potential CHVI According to O. Reg. 9/06:**

- 1) **Design or Physical Value:** None identified.
  - 2) **Historical or Associate Value:** None identified.
  - 3) **Contextual Value:** None identified.
- Not determined to have cultural heritage value or interest.

**Potential Direct and Indirect Impacts to the Heritage Attributes:** CHVI was not identified, therefore impacts were not assessed.

**Mitigation of Negative Impacts:** Impacts were not identified, therefore mitigation is not recommended or necessary.



**Date:** Various (20<sup>th</sup> century)

**Description:** Frame barn with a stone foundation and rear shed addition. One concrete silo and two metal bins onsite with various outbuildings. Additional buildings onsite.

**Potential CHVI According to O. Reg. 9/06:**

- 1) **Design or Physical Value:** 19<sup>th</sup> – early 20<sup>th</sup> century example of frame barn, which although common throughout the study area is increasingly rare throughout the province.
  - 2) **Historical or Associate Value:** None identified.
  - 3) **Contextual Value:** Supports the agricultural character of the surrounding vernacular rural landscape.
- Heritage Attribute:** Timber frame. Relationship of structure to road.

**Potential Direct and Indirect Impacts to the Heritage Attributes:** CHVI was not identified, therefore impacts were not assessed.

**Mitigation of Negative Impacts:** Impacts were not identified, therefore mitigation is not recommended or necessary.



## APPENDIX A BUILT HERITAGE INVENTORY

### Site #2 – 72167 Babylon Line (Municipality of Bluewater)



**Date:** 20<sup>th</sup> century

**Description:** One and one half storey side gabled house with medium roof pitch, modern siding and concrete covered foundation. Full width covered front porch and apparent rear addition. Modern outbuildings onsite.

**Potential CHVI According to O. Reg. 9/06:**

**1) Design or Physical Value:** None identified.

**2) Historical or Associate Value:** None identified.

**3) Contextual Value:** None identified.

Not determined to have cultural heritage value or interest.

**Potential Direct and Indirect Impacts to the Heritage Attributes:** CHVI was not identified, therefore impacts were not assessed.

**Mitigation of Negative Impacts:** Impacts were not identified, therefore mitigation is not recommended or necessary.



**APPENDIX A  
BUILT HERITAGE INVENTORY**

**Site #3 – 72039 Babylon Line (Municipality of Bluewater)**



**Date:** Late 19<sup>th</sup> century

**Description:** One and one half storey side gabled house with medium roof pitch, modern siding and concrete foundation. Symmetrical in design with a central double hung paired window. Addition at rear and covered central entryway with front gable.

**Potential CHVI According to O. Reg. 9/06:**

- 1) **Design or Physical Value:** None identified.
  - 2) **Historical or Associate Value:** None identified.
  - 3) **Contextual Value:** None identified.
- Not determined to have cultural heritage value or interest.

**Potential Direct and Indirect Impacts to the Heritage Attributes:** CHVI was not identified, therefore impacts were not assessed.

**Mitigation of Negative Impacts:** Impacts were not identified, therefore mitigation is not recommended or necessary.



**Date:** 20<sup>th</sup> century

**Description:** Timber barn with metal roof, timber frame and concrete foundation.

**Potential CHVI According to O. Reg. 9/06:**

- 1) **Design or Physical Value:** None identified.
  - 2) **Historical or Associate Value:** None identified.
  - 3) **Contextual Value:** None identified.
- Not determined to have cultural heritage value or interest.

**Potential Direct and Indirect Impacts to the Heritage Attributes:** CHVI was not identified, therefore impacts were not assessed.

**Mitigation of Negative Impacts:** Impacts were not identified, therefore mitigation is not recommended or necessary.



**APPENDIX A  
BUILT HERITAGE INVENTORY**

**Site #4 – 72048 Goshen Line (Municipality of Bluewater)**



**Date:** 1860s – 1890s

**Description:** One and one half storey side gabled house with a medium roof pitch and prominent central gable, yellow brick exterior and stone foundation. Vernacular Gothic Revival design elements include symmetrical design, central door, steeply pitched central gable with a decorative rounded window arch and bargeboard with cross-bracing and open rake. Timber addition at rear.

**Potential CHVI According to O. Reg. 9/06:**

- 1) Design or Physical Value:** Representative of mid-late 19<sup>th</sup> century Vernacular Gothic Revival design, popular throughout southwestern Ontario.
  - 2) Historical or Associate Value:** None identified.
  - 3) Contextual Value:** Popular style of 19<sup>th</sup> century construction supports the character of the surrounding vernacular rural landscape.
- Heritage Attributes:** Symmetrical design; brick; steep pitched central gable with window; bargeboard with crossbracing; open rake.

**Potential Direct and Indirect Impacts to the Heritage Attributes:** None anticipated.

**Mitigation of Negative Impacts:** No negative impacts identified, therefore no further mitigation recommended.



**Date:** 20<sup>th</sup> century

**Description:** Storage shed with metal roof, metal exterior on an undetermined foundation. Metal bin located at the rear.

**Potential CHVI According to O. Reg. 9/06:**

- 1) Design or Physical Value:** None identified.
  - 2) Historical or Associate Value:** None identified.
  - 3) Contextual Value:** None identified.
- Not determined to have cultural heritage value or interest.

**Potential Direct and Indirect Impacts to the Heritage Attributes:** None anticipated.

**Mitigation of Negative Impacts:** No negative impacts identified, therefore no further mitigation recommended.



**APPENDIX A  
BUILT HERITAGE INVENTORY**

**Site #5 – 71416 Bronson Line (Municipality of Bluewater)**



**Date:** Late 19<sup>th</sup> century

**Description:** One and one half storey, side gabled, yellow brick house on an undetermined foundation. House has long, multi room/garage, single-storey metal-roofed gabled addition with a second storey addition attached to the house.

**Potential CHVI According to O. Reg. 9/06:**

- 1) **Design or Physical Value:** None identified.
  - 2) **Historical or Associate Value:** None identified.
  - 3) **Contextual Value:** None identified.
- Not determined to have cultural heritage value or interest.

**Potential Direct and Indirect Impacts to the Heritage Attributes:** CHVI was not identified, therefore impacts were not assessed.

**Mitigation of Negative Impacts:** Impacts were not identified, therefore mitigation is not recommended or necessary.



**Date:** Various (19<sup>th</sup> and 20<sup>th</sup> century)

**Description:** Frame barn with side shed addition, metal roof, timber frame and stone foundation. Silo attached to the shed addition. Side addition with metal gambrel roof and concrete foundation.

**Potential CHVI According to O. Reg. 9/06:**

- 1) **Design or Physical Value:** 19<sup>th</sup> – early 20<sup>th</sup> century example of frame barn, which although common throughout the study area is increasingly rare throughout the province.
  - 2) **Historical or Associate Value:** None identified.
  - 3) **Contextual Value:** Supports the agricultural character of the surrounding vernacular rural landscape.
- Heritage Attribute:** Timber frame. Relationship of structure road.

**Potential Direct and Indirect Impacts to the Heritage Attributes:** None anticipated.

**Mitigation of Negative Impacts:** No negative impacts identified, therefore no further mitigation recommended.



**APPENDIX A  
BUILT HERITAGE INVENTORY**

**Site #6 – 71778 Blackbush Line (Municipality of Bluewater)**



**Date:** 1860s – 1890s

**Description:** One and one half storey side gabled t-shaped house with a medium roof pitch and steeply pitched gables throughout, yellow brick exterior, and stone foundation. Vernacular Gothic Revival design elements include symmetrical design, central (covered) door, central gable, extensive brick detailing along cornice and rounded window arch, and remnants of decorative brackets. Possibly abandoned.

**Potential CHVI According to O. Reg. 9/06:**

- 1) Design or Physical Value:** Representative of mid-late 19<sup>th</sup> century Vernacular Gothic Revival design, popular throughout southwestern Ontario.
  - 2) Historical or Associate Value:** None identified.
  - 3) Contextual Value:** Popular style of 19<sup>th</sup> century construction supports the character of the surrounding vernacular rural landscape.
- Heritage Attributes:** Symmetrical design; brick detailing; steep pitched central gable with rounded window; decorative window brackets. Relationship of structure to outbuildings and road.

**Potential Direct and Indirect Impacts to the Heritage Attributes:** None anticipated.

**Mitigation of Negative Impacts:** No negative impacts identified, therefore no further mitigation recommended.



**Date:** Various (19<sup>th</sup> and 20<sup>th</sup> century)

**Description:** English styled barn with two shed additions and possible rear addition. Metal roof sits on a primarily timber frame and undetermined foundation. Shed structure contains a metal roof on timber frame with an undetermined foundation and rear metal bin.

**Potential CHVI According to O. Reg. 9/06:**

- 1) Design or Physical Value:** 19<sup>th</sup> – early 20<sup>th</sup> century example of frame barn, which although common throughout the study area is increasingly rare throughout the province.
  - 2) Historical or Associate Value:** None identified.
  - 3) Contextual Value:** Supports the agricultural character of the surrounding vernacular rural landscape.
- Heritage Attribute:** Timber frame. Relationship of structure to house and road.

**Potential Direct and Indirect Impacts to the Heritage Attributes:** None anticipated.

**Mitigation of Negative Impacts:** No negative impacts identified, therefore no further mitigation recommended.





**APPENDIX A  
BUILT HERITAGE INVENTORY**

**Site #7 – 72020 Bronson Line (Municipality of Bluewater)**



**Date:** 1890 – 1920s

**Description:** Two storey, yellow brick, asymmetrical, hipped roof house on undetermined foundation with two storey gabled projection on front and gabled dormer on rear side. Vernacular Queen Anne design elements include wood columned and railed first and second storey porches, bay window, eaves with decorative cut outs and some decorative brackets. Rear addition.

**Potential CHVI According to O. Reg. 9/06:**

- 1) Design or Physical Value:** Representative of 19th – early 20th century two storey Vernacular Queen Anne design, popular throughout southwestern Ontario.
  - 2) Historical or Associate Value:** None identified.
  - 3) Contextual Value:** Popular style of 19<sup>th</sup> – 20<sup>th</sup> century construction supports the character of the surrounding vernacular landscape.
- Heritage Attributes:** Two storey; asymmetrical, hipped roof with gables and dormers; bay window; porches; cut outs; brackets. Relationship of structure to outbuildings and road.

**Potential Direct and Indirect Impacts to the Heritage Attributes:** None anticipated.

**Mitigation of Negative Impacts:** No negative impacts identified, therefore no further mitigation recommended.



**Date:** 19<sup>th</sup> – early 20<sup>th</sup> century

**Description:** Timber framed, wood sided, metal roofed, side gabled barn with rear addition. Modern metal bin at rear.

**Potential CHVI According to O. Reg. 9/06:**

- 1) Design or Physical Value:** 19<sup>th</sup> – early 20<sup>th</sup> century example of frame barn, which although common throughout the study area is increasingly rare throughout the province.
  - 2) Historical or Associate Value:** None identified.
  - 3) Contextual Value:** Supports the agricultural character of the surrounding vernacular rural landscape.
- Heritage Attribute:** Timber frame. Relationship of structure to house and road.

**Potential Direct and Indirect Impacts to the Heritage Attributes:** None anticipated.

**Mitigation of Negative Impacts:** No negative impacts identified, therefore no further mitigation recommended.



**APPENDIX A  
BUILT HERITAGE INVENTORY**

**Site #8 – 38554 Dashwood Road (Municipality of Bluewater)**



**Date:** 1890s – 1920s

**Description:** Two storey, yellow brick hipped roof house on a stone foundation. Symmetrical facade with decorative brackets and wide eaves. Rear addition. Modern garage at rear.

**Potential CHVI According to O. Reg. 9/06:**

**1) Design or Physical Value:** Representative of 19th – early 20th century two storey vernacular design, popular throughout southwestern Ontario.

**2) Historical or Associate Value:** None identified.

**3) Contextual Value:** Popular style of 19<sup>th</sup> century construction supports the character of the surrounding vernacular landscape.

**Heritage Attributes:** Two storey; hipped roof; decorative wide eaves with brackets. Relationship of structure to outbuildings and road.

**Potential Direct and Indirect Impacts to the Heritage Attributes:** None anticipated.

**Mitigation of Negative Impacts:** No negative impacts identified, therefore no further mitigation recommended.



**Date:** 19<sup>th</sup> – 20<sup>th</sup> century

**Description:** Timber frame, gambrel roofed barn with metal roof and undetermined foundation. One large gable roof addition creates an L-plan. Modern shed buildings in foreground.

**Potential CHVI According to O. Reg. 9/06:**

**1) Design or Physical Value:** 19<sup>th</sup> – early 20<sup>th</sup> century example of frame barn, which although common throughout the study area is increasingly rare throughout the province.

**2) Historical or Associate Value:** None identified.

**3) Contextual Value:** Supports the agricultural character of the surrounding vernacular rural landscape.

**Heritage Attribute:** Timber frame. Relationship of structure to house and road.

**Potential Direct and Indirect Impacts to the Heritage Attributes:** None anticipated.

**Mitigation of Negative Impacts:** No negative impacts identified, therefore no further mitigation recommended.



**APPENDIX A  
BUILT HERITAGE INVENTORY**

**Site #9 – 70604 Shirpka Line (Municipality of South Huron)**



**Date:** Late 19<sup>th</sup> century

**Description:** One and one half storey T-plan house on an undetermined foundation. Modern siding, windows and doors.

**Potential CHVI According to O. Reg. 9/06:**

**1) Design or Physical Value:** None identified.

**2) Historical or Associate Value:** None identified.

**3) Contextual Value:** None identified.

Not determined to have cultural heritage value or interest.

**Potential Direct and Indirect Impacts to the Heritage Attributes:** CHVI was not identified, therefore impacts were not assessed.

**Mitigation of Negative Impacts:** Impacts were not identified, therefore mitigation is not recommended or necessary.



## APPENDIX A BUILT HERITAGE INVENTORY

### Site #10 – 38565 Dashwood Road (Municipality of South Huron)



**Date:** Late 19<sup>th</sup> century

**Description:** One and one half storey side gabled house with medium roof pitch, modern siding and undetermined foundation. Symmetrical in design. Extensive rear addition and single storey central porch.

**Potential CHVI According to O. Reg. 9/06:**

- 1) **Design or Physical Value:** None identified.
  - 2) **Historical or Associate Value:** None identified.
  - 3) **Contextual Value:** None identified.
- Not determined to have cultural heritage value or interest.

**Potential Direct and Indirect Impacts to the Heritage Attributes:** CHVI was not identified, therefore impacts were not assessed.

**Mitigation of Negative Impacts:** Impacts were not identified, therefore mitigation is not recommended or necessary.



**Date:** Various (20<sup>th</sup> century)

**Description:** Two barns and single concrete silo onsite. First has a gambrel roof, mixed material exterior (timber, metal, apparent concrete), and undetermined foundation. Second is a front gabled barn with metal roof, metal siding, and concrete foundation.

**Potential CHVI According to O. Reg. 9/06:**

- 1) **Design or Physical Value:** None identified.
  - 2) **Historical or Associate Value:** None identified.
  - 3) **Contextual Value:** None identified.
- Not determined to have cultural heritage value or interest.

**Potential Direct and Indirect Impacts to the Heritage Attributes:** CHVI was not identified, therefore impacts were not assessed.

**Mitigation of Negative Impacts:** Impacts were not identified, therefore mitigation is not recommended or necessary.



**APPENDIX A  
BUILT HERITAGE INVENTORY**

**Site #11 – 70865 Babylon Line (Municipality of South Huron)**



**Date:** 1860s – 1890s

**Description:** One and one half storey side gabled house with a medium roof pitch and central gable, yellow brick exterior and concrete foundation. Vernacular Gothic Revival design elements include symmetrical design, central window extending into the steeply pitched central gable and remnants of decorative brackets. Modern addition at rear.

**Potential CHVI According to O. Reg. 9/06:**

- 1) Design or Physical Value:** Representative of mid-late 19<sup>th</sup> century Vernacular Gothic Revival design, popular throughout southwestern Ontario.
  - 2) Historical or Associate Value:** None identified.
  - 3) Contextual Value:** Popular style of 19<sup>th</sup> century construction supports the character of the surrounding vernacular rural landscape.
- Heritage Attributes:** Symmetrical design; brick; steep pitched central gable with window. Relationship of structure to outbuildings and road.

**Potential Direct and Indirect Impacts to the Heritage Attributes:** None anticipated.

**Mitigation of Negative Impacts:** No negative impacts identified, therefore no further mitigation recommended.



**Date:** Various (19<sup>th</sup> and 20<sup>th</sup> century)

**Description:** Barn appears to be a frame barn with third gable addition and later single storey shed addition, with metal roofs, timber frames and a variety of foundations (stone, brick and concrete).

**Potential CHVI According to O. Reg. 9/06:**

- 1) Design or Physical Value:** 19<sup>th</sup> – early 20<sup>th</sup> century example of frame barns, which although common throughout the study area are increasingly rare throughout the province.
  - 2) Historical or Associate Value:** None identified.
  - 3) Contextual Value:** Supports the agricultural character of the surrounding vernacular rural landscape.
- Heritage Attribute:** Timber frame. Relationship of structure to house and road.

**Potential Direct and Indirect Impacts to the Heritage Attributes:** None anticipated.

**Mitigation of Negative Impacts:** No negative impacts identified, therefore no further mitigation recommended.



**APPENDIX A  
BUILT HERITAGE INVENTORY**

**Site #12 – 70963 Babylon Line (Municipality of South Huron)**



**Date:** 1890s – 1920s

**Description:** Two storey hipped roof house with a medium roof pitch, central hipped dormer, modern siding and undetermined foundation. Symmetrical front facade with extensive modifications throughout and large rear addition.

**Potential CHVI According to O. Reg. 9/06:**

**1) Design or Physical Value:** Representative of 19th – early 20th century two storey vernacular design, popular throughout southwestern Ontario.

**2) Historical or Associate Value:** None identified.

**3) Contextual Value:** Popular style of 19<sup>th</sup> century construction supports the character of the surrounding vernacular landscape.

**Heritage Attributes:** Two storey; hipped roof; dormer. Relationship of structure to outbuildings and road.

**Potential Direct and Indirect Impacts to the Heritage Attributes:** None anticipated.

**Mitigation of Negative Impacts:** No negative impacts identified, therefore no further mitigation recommended.



**Date:** 20<sup>th</sup> century

**Description:** Frame barn with gambrel roof addition and concrete silo. Both barns have metal roofs, modern siding and (possibly covered) concrete foundation.

**Potential CHVI According to O. Reg. 9/06:**

**1) Design or Physical Value:** 19<sup>th</sup> – early 20<sup>th</sup> century example of frame barns, which although common throughout the study area are increasingly rare throughout the province.

**2) Historical or Associate Value:** None identified.

**3) Contextual Value:** Supports the agricultural character of the surrounding vernacular rural landscape.

**Heritage Attribute:** Timber frame. Relationship of structure to house and road.

**Potential Direct and Indirect Impacts to the Heritage Attributes:** None anticipated.

**Mitigation of Negative Impacts:** No negative impacts identified, therefore no further mitigation recommended.



## APPENDIX A BUILT HERITAGE INVENTORY

### Site #13 – 70683 Babylon Line (Municipality of South Huron)



**Date:** 1860s – 1890s

**Description:** One and one half storey L-shaped cross gabled house with a steep roof pitch and central gable, modern siding and a stone foundation. Vernacular Gothic Revival design influences include asymmetrical design and the central window extending into the steeply pitched central gable.

**Potential CHVI According to O. Reg. 9/06:**

- 1) Design or Physical Value:** Representative of 19<sup>th</sup> century vernacular design, popular throughout southwestern Ontario.
- 2) Historical or Associate Value:** None identified.
- 3) Contextual Value:** Popular style of 19<sup>th</sup> century construction supports the character of the surrounding vernacular rural landscape.

**Heritage Attributes:** L-shaped; steep pitched central gable with rounded window. Relationship of structure to road.

**Potential Direct and Indirect Impacts to the Heritage Attributes:** None anticipated.

**Mitigation of Negative Impacts:** No negative impacts identified, therefore no further mitigation recommended.



**Date:** 20<sup>th</sup> century

**Description:** Three concrete silos at the rear of the house.

**Potential CHVI According to O. Reg. 9/06:**

- 1) Design or Physical Value:** None identified.
- 2) Historical or Associate Value:** None identified.
- 3) Contextual Value:** None identified.

Not determined to have cultural heritage value or interest.

**Potential Direct and Indirect Impacts to the Heritage Attributes:** None anticipated.

**Mitigation of Negative Impacts:** No negative impacts identified, therefore no further mitigation recommended.



**APPENDIX A  
BUILT HERITAGE INVENTORY**

**Site #14 – 70524 Babylon Line (Municipality of South Huron)**



**Date:** 19<sup>th</sup> – early 20<sup>th</sup> century

**Description:** Frame barn with rear shed addition, metal roof, timber frame and stone foundation.

**Potential CHVI According to O. Reg. 9/06:**

**1) Design or Physical Value:** 19<sup>th</sup> – early 20<sup>th</sup> century example of frame barn, which although common throughout the study area is increasingly rare throughout the province.

**2) Historical or Associate Value:** None identified.

**3) Contextual Value:** Supports the agricultural character of the surrounding vernacular rural landscape.

**Heritage Attribute:** Timber frame. Relationship of structure to road.

**Potential Direct and Indirect Impacts to the Heritage Attributes:** None anticipated.

**Mitigation of Negative Impacts:** No negative impacts identified, therefore no further mitigation recommended.





**APPENDIX A  
BUILT HERITAGE INVENTORY**

**Site #15 – 69865 Grand Bend Line (Municipality of South Huron)**



**Date:** 1860s – 1890s

**Description:** One and one half storey side gabled house with a medium roof pitch and prominent central gable, yellow brick exterior and stone foundation. Vernacular Gothic Revival design elements include symmetrical design, central door, steeply pitched central gable with a decorative rounded window arch and bargeboard with cross-bracing and open rake.

**Potential CHVI According to O. Reg. 9/06:**

- 1) Design or Physical Value:** Representative of mid-late 19<sup>th</sup> century Vernacular Gothic Revival design, popular throughout southwestern Ontario.
  - 2) Historical or Associate Value:** None identified.
  - 3) Contextual Value:** Popular style of 19<sup>th</sup> century construction supports the character of the surrounding vernacular rural landscape.
- Heritage Attributes:** Symmetrical design; brick; steep pitched central gable with rounded window; brick quoins. Relationship of structure to outbuildings and road.

**Potential Direct and Indirect Impacts to the Heritage Attributes:** None anticipated.

**Mitigation of Negative Impacts:** No negative impacts identified, therefore no further mitigation recommended.



**Date:** 19<sup>th</sup> – 20<sup>th</sup> century

**Description:** Side gabled timber framed barn with metal roof and undetermined foundation. Two side shed additions and two concrete silos on site.

**Potential CHVI According to O. Reg. 9/06:**

- 1) Design or Physical Value:** 19<sup>th</sup> – early 20<sup>th</sup> century example of frame barn, which although common throughout the study area is increasingly rare throughout the province.
  - 2) Historical or Associate Value:** None identified.
  - 3) Contextual Value:** Supports the agricultural character of the surrounding vernacular rural landscape.
- Heritage Attribute:** Timber frame. Relationship of structure to house and road.

**Potential Direct and Indirect Impacts to the Heritage Attributes:** None anticipated.

**Mitigation of Negative Impacts:** No negative impacts identified, therefore no further mitigation recommended.



**APPENDIX A  
BUILT HERITAGE INVENTORY**

**Site #16 – 70260 Kirkton Line (Municipality of Bluewater)**



**Date:** 1860s – 1890s

**Description:** One and one half storey T-shaped side gabled house with a medium roof pitch, prominent central gable, yellow brick exterior, and stone foundation. Vernacular Gothic Revival design elements include symmetrical design with central porch and door, steeply pitched central gable with a decorative rounded window arch and brickwork. Rear addition.

**Potential CHVI According to O. Reg. 9/06:**

- 1) Design or Physical Value:** Representative of mid-late 19<sup>th</sup> century Vernacular Gothic Revival design, popular throughout southwestern Ontario.
  - 2) Historical or Associate Value:** None identified.
  - 3) Contextual Value:** Popular style of 19<sup>th</sup> century construction supports the character of the surrounding vernacular rural landscape.
- Heritage Attributes:** Symmetrical design; brick; steep pitched central gable with rounded window; brick quoins. Relationship of structure to outbuildings and road.

**Potential Direct and Indirect Impacts to the Heritage Attributes:** None anticipated.

**Mitigation of Negative Impacts:** No negative impacts identified, therefore no further mitigation recommended.



**Date:** 19<sup>th</sup> – early 20<sup>th</sup> century

**Description:** Timber frame, side gabled barn with a metal roof and wood siding, on a brick and concrete foundation. Concrete silo sits adjacent to barn.

**Potential CHVI According to O. Reg. 9/06:**

- 1) Design or Physical Value:** 19<sup>th</sup> – early 20<sup>th</sup> century example of frame barn, which although common throughout the study area is increasingly rare throughout the province.
  - 2) Historical or Associate Value:** None identified.
  - 3) Contextual Value:** Supports the agricultural character of the surrounding vernacular rural landscape.
- Heritage Attribute:** Timber frame. Relationship of structure to house and road.

**Potential Direct and Indirect Impacts to the Heritage Attributes:** None anticipated.

**Mitigation of Negative Impacts:** No negative impacts identified, therefore no further mitigation recommended.



**APPENDIX A  
BUILT HERITAGE INVENTORY**

**Site #17 – 71002 Goshen Line (Municipality of South Huron)**



**Date:** 1890s – 1920s

**Description:** Two storey hipped roof house with a steep roof pitch, yellow brick exterior and undetermined foundation. Vernacular four-square design elements include symmetrical design, full width single storey roof pitch and square plan. Modern addition at rear.

**Potential CHVI According to O. Reg. 9/06:**

- 1) Design or Physical Value:** Representative of 19th – early 20th century two storey vernacular design, popular throughout southwestern Ontario.
  - 2) Historical or Associate Value:** None identified.
  - 3) Contextual Value:** Popular style of 19<sup>th</sup> century construction supports the character of the surrounding vernacular landscape.
- Heritage Attributes:** Symmetrical design; two storey; brick; hipped roof; front porch. Relationship of structure to outbuildings and road.

**Potential Direct and Indirect Impacts to the Heritage Attributes:** None anticipated.

**Mitigation of Negative Impacts:** No negative impacts identified, therefore no further mitigation recommended.



**Date:** Various (19<sup>th</sup> and 20<sup>th</sup> century)

**Description:** Frame barn with concrete silo and modern outbuilding. Barn has a metal roof, timber frame and undetermined foundation.

**Potential CHVI According to O. Reg. 9/06:**

- 1) Design or Physical Value:** 19<sup>th</sup> – early 20<sup>th</sup> century example of frame barn, which although common throughout the study area is increasingly rare throughout the province.
  - 2) Historical or Associate Value:** None identified.
  - 3) Contextual Value:** Supports the agricultural character of the surrounding vernacular rural landscape.
- Heritage Attribute:** Timber frame. Relationship of structure to house and road.

**Potential Direct and Indirect Impacts to the Heritage Attributes:** None anticipated.

**Mitigation of Negative Impacts:** No negative impacts identified, therefore no further mitigation recommended.



**APPENDIX A  
BUILT HERITAGE INVENTORY**

**Site #18 – 38439 Crediton Line (Municipality of South Huron )**



**Date:** 1890s – 1920s

**Description:** Two storey hipped roof house with a medium roof pitch, central hipped dormer, brick exterior and stone foundation. Symmetrical front facade with central doorway. Rear addition.

**Potential CHVI According to O. Reg. 9/06:**

**1) Design or Physical Value:** Representative of 19th – early 20th century two storey vernacular design, popular throughout southwestern Ontario.

**2) Historical or Associate Value:** None identified.

**3) Contextual Value:** Popular style of 19<sup>th</sup> century construction supports the character of the surrounding vernacular landscape.

**Heritage Attributes:** Two storey; hipped roof; dormer.

**Potential Direct and Indirect Impacts to the Heritage Attributes:** None anticipated.

**Mitigation of Negative Impacts:** No negative impacts identified, therefore no further mitigation recommended.



**APPENDIX A  
BUILT HERITAGE INVENTORY**

**Site #19 – 71002 Goshen Line (Municipality of South Huron)**



**Date:** 1890s – 1920s

**Description:** Two storey hipped roof house with medium roof pitch, yellow brick exterior and stone foundation. Vernacular design characteristics include symmetrical four-square design, small front entry porch, wide eaves and remnants of decorative brackets. Extensive addition at rear.

**Potential CHVI According to O. Reg. 9/06:**

- 1) Design or Physical Value:** Representative of 19th – early 20th century two storey vernacular design, popular throughout southwestern Ontario.
  - 2) Historical or Associate Value:** None identified.
  - 3) Contextual Value:** Popular style of 19<sup>th</sup> century construction supports the character of the surrounding vernacular landscape.
- Heritage Attributes:** Symmetrical design; two storey; brick; hipped roof; wide eaves; brackets. Relationship of structure to outbuilding and road.

**Potential Direct and Indirect Impacts to the Heritage Attributes:** None anticipated.

**Mitigation of Negative Impacts:** No negative impacts identified, therefore no further mitigation recommended.



**Date:** 20<sup>th</sup> century

**Description:** Two-bay shed with metal roof, timber frame and concrete foundation.

**Potential CHVI According to O. Reg. 9/06:**

- 1) Design or Physical Value:** None identified.
  - 2) Historical or Associate Value:** None identified.
  - 3) Contextual Value:** Supports the agricultural character of the surrounding vernacular rural landscape.
- Heritage Attribute:** Relationship of structure to house and road.

**Potential Direct and Indirect Impacts to the Heritage Attributes:** None anticipated.

**Mitigation of Negative Impacts:** No negative impacts identified, therefore no further mitigation recommended.



## APPENDIX A BUILT HERITAGE INVENTORY

### Site #20 – 38060 Huron Street (Municipality of South Huron)



**Date:** 1860s – 1890s

**Description:** One and one half storey T-shaped side gabled house with a medium roof pitch and prominent central gable, yellow brick exterior, and concrete covered foundation. Vernacular Gothic Revival design elements include symmetrical design, central door, steeply pitched central gable with a decorative rounded window arch and brickwork. Rear addition.

**Potential CHVI According to O. Reg. 9/06:**

**1) Design or Physical Value:** Representative of mid-late 19<sup>th</sup> century Vernacular Gothic Revival design, popular throughout southwestern Ontario.

**2) Historical or Associate Value:** None identified.

**3) Contextual Value:** Popular style of 19<sup>th</sup> century construction supports the character of the surrounding vernacular rural landscape.

**Heritage Attributes:** Symmetrical design; brick; steep pitched central gable with rounded window.

**Potential Direct and Indirect Impacts to the Heritage Attributes:** None anticipated.

**Mitigation of Negative Impacts:** No negative impacts identified, therefore no further mitigation recommended.



**APPENDIX A  
BUILT HERITAGE INVENTORY**

**Site #21 – 70112 Bronson Line (Municipality of Bluewater)**



**Date:** Late 19<sup>th</sup> century

**Description:** One and one half storey side gabled house with medium roof pitch, modern siding and concrete foundation. Symmetrical in design with a full front porch.

**Potential CHVI According to O. Reg. 9/06:**

- 1) **Design or Physical Value:** None identified.
  - 2) **Historical or Associate Value:** None identified.
  - 3) **Contextual Value:** None identified.
- Not determined to have cultural heritage value or interest.

**Potential Direct and Indirect Impacts to the Heritage Attributes:** CHVI was not identified, therefore impacts were not assessed.

**Mitigation of Negative Impacts:** Impacts were not identified, therefore mitigation is not recommended or necessary.



**Date:** 19<sup>th</sup> – 20<sup>th</sup> century

**Description:** Timber framed side gabled barn with a metal roof and wood siding, on a concrete foundation. Rear and side additions. Concrete silo sits adjacent to barn.

**Potential CHVI According to O. Reg. 9/06:**

- 1) **Design or Physical Value:** 19<sup>th</sup> – early 20<sup>th</sup> century example of frame barn, which although common throughout the study area is increasingly rare throughout the province.
  - 2) **Historical or Associate Value:** None identified.
  - 3) **Contextual Value:** Supports the agricultural character of the surrounding vernacular rural landscape.
- Heritage Attribute:** Timber frame. Relationship of structure to road.

**Potential Direct and Indirect Impacts to the Heritage Attributes:** CHVI was not identified, therefore impacts were not assessed.

**Mitigation of Negative Impacts:** Impacts were not identified, therefore mitigation is not recommended or necessary.



## APPENDIX A BUILT HERITAGE INVENTORY

### Site #22 – 35526 South Road (Municipality of South Huron)



**Date:** 19<sup>th</sup> – early 20<sup>th</sup> century

**Description:** Frame barn with metal roof, timber frame and concrete foundation. Barn is situated at the centre of an agricultural field.

**Potential CHVI According to O. Reg. 9/06:**

**1) Design or Physical Value:** 19<sup>th</sup> – early 20<sup>th</sup> century example of frame barn, which although common throughout the study area is increasingly rare throughout the province.

**2) Historical or Associate Value:** None identified.

**3) Contextual Value:** Supports the agricultural character of the surrounding vernacular rural landscape.

**Heritage Attribute:** Timber frame. Relationship of structure to road.

**Potential Direct and Indirect Impacts to the Heritage Attributes:** None anticipated.

**Mitigation of Negative Impacts:** No negative impacts identified, therefore no further mitigation recommended.





**APPENDIX A  
BUILT HERITAGE INVENTORY**

**Site #23 – 69436 Mollard Line (Municipality of South Huron)**



**Date:** 1890s – 1920s

**Description:** Two storey, asymmetrical house, with a hipped roof, yellow brick and an undetermined foundation. Vernacular Queen Anne design elements include two storey gabled projection, decorative spindle work and turned wood columns. Rear addition.

**Potential CHVI According to O. Reg. 9/06:**

**1) Design or Physical Value:** Representative of 19th – early 20th century two storey Vernacular Queen Anne design, popular throughout southwestern Ontario.

**2) Historical or Associate Value:** None identified.

**3) Contextual Value:** Popular style of 19<sup>th</sup> – 20<sup>th</sup> century construction supports the character of the surrounding vernacular landscape.

**Heritage Attributes:** Two storey; brick; asymmetrical, hipped roof with projecting front gable; inset porch. Relationship of structure to outbuilding and road.

**Potential Direct and Indirect Impacts to the Heritage Attributes:** None anticipated.

**Mitigation of Negative Impacts:** No negative impacts identified, therefore no further mitigation recommended.



**Date:** 20<sup>th</sup> century

**Description:** Side gabled, timber frame barn on a concrete or concrete foundation. Roof and sidewalls appear to be painted metal.

**Potential CHVI According to O. Reg. 9/06:**

**1) Design or Physical Value:** None identified.

**2) Historical or Associate Value:** None identified.

**3) Contextual Value:** Supports the agricultural character of the surrounding vernacular rural landscape.

**Heritage Attribute:** Relationship of structure to house and road.

**Potential Direct and Indirect Impacts to the Heritage Attributes:** None anticipated.

**Mitigation of Negative Impacts:** No negative impacts identified, therefore no further mitigation recommended.



## APPENDIX A BUILT HERITAGE INVENTORY

### Site #24 – 35652 Greenway Drive (Municipality of South Huron)



**Date:** 1890s – 1920s

**Description:** Two storey hipped roof house with lower cross gable on the front facade and medium roof pitch, yellow brick exterior and rusticated concrete block foundation. Vernacular Queen Anne design elements include asymmetrical design, front facing gables, decorative gable ornaments featuring a sunburst, dentil-like brackets, and front and side porches with delicate spindle work along porch columns. Rear addition.

**Potential CHVI According to O. Reg. 9/06:**

**1) Design or Physical Value:** Representative of 19th – early 20th century two storey Vernacular Queen Anne design, popular throughout southwestern Ontario.

**2) Historical or Associate Value:** None identified.

**3) Contextual Value:** Popular style of 19<sup>th</sup> – 20<sup>th</sup> century construction supports the character of the surrounding vernacular landscape.

**Heritage Attributes:** Two storey; brick; asymmetrical, hipped roof with projecting front gable; decorative brackets; inset and side porches.

**Potential Direct and Indirect Impacts to the Heritage Attributes:** None anticipated.

**Mitigation of Negative Impacts:** No negative impacts identified, therefore no further mitigation recommended.



**APPENDIX A  
BUILT HERITAGE INVENTORY**

**Site #25 – 69668 Grand Bend Line (Municipality of South Huron)**



**Date:** 1890s – 1920s

**Description:** Two storey hipped roof house with steep pitch, yellow brick exterior and stone foundation. Vernacular design characteristics include symmetrical rectangular design, decorative dentils and brackets as well as a central dormer with rounded central window. Addition at rear.

**Potential CHVI According to O. Reg. 9/06:**

**1) Design or Physical Value:** Representative of 19th – early 20th century two storey vernacular design, popular throughout southwestern Ontario.

**2) Historical or Associate Value:** None identified.

**3) Contextual Value:** Popular style of 19<sup>th</sup> century construction supports the character of the surrounding vernacular landscape.

**Heritage Attributes:** Symmetrical design; two storey; brick; hipped roof with central gable; wide eaves; decorative dentils and brackets.

**Potential Direct and Indirect Impacts to the Heritage Attributes:** None anticipated.

**Mitigation of Negative Impacts:** No negative impacts identified, therefore no further mitigation recommended.



**Date:** 20<sup>th</sup> century

**Description:** Gambrel roof shed with metal roof, modern siding and an undetermined foundation.

**Potential CHVI According to O. Reg. 9/06:**

**1) Design or Physical Value:** None identified.

**2) Historical or Associate Value:** None identified.

**3) Contextual Value:** None identified.

Not determined to have cultural heritage value or interest.

**Potential Direct and Indirect Impacts to the Heritage Attributes:** None anticipated.

**Mitigation of Negative Impacts:** No negative impacts identified, therefore no further mitigation recommended.



**APPENDIX A  
BUILT HERITAGE INVENTORY**

**Site #26 – 69689 Grand Bend Line (Municipality of South Huron)**



**Date:** 19<sup>th</sup> – early 20<sup>th</sup> century

**Description:** Frame barn with metal roof, timber siding and a concrete foundation with windows.

**Potential CHVI According to O. Reg. 9/06:**

**1) Design or Physical Value:** 19<sup>th</sup> – early 20<sup>th</sup> century example of frame barn, which although common throughout the study area is increasingly rare throughout the province.

**2) Historical or Associate Value:** None identified.

**3) Contextual Value:** Supports the agricultural character of the surrounding vernacular rural landscape.

**Heritage Attribute:** Timber frame. Relationship of structure to road.

**Potential Direct and Indirect Impacts to the Heritage Attributes:** None anticipated.

**Mitigation of Negative Impacts:** No negative impacts identified, therefore no further mitigation recommended.



**APPENDIX A  
BUILT HERITAGE INVENTORY**

**Site #27 – 69724 Grand Bend Line (Municipality of South Huron)**



**Date:** 1860s – 1890s

**Description:** One and one half storey side gabled house with a steep roof pitch and prominent central gable, modern siding and stone foundation. Vernacular Gothic Revival design elements include symmetrical design, central window extended into a steeply pitched gable and decorative cross bracing. Rear addition.

**Potential CHVI According to O. Reg. 9/06:**

- 1) Design or Physical Value:** Representative of mid-late 19<sup>th</sup> century Vernacular Gothic Revival design, popular throughout southwestern Ontario.
  - 2) Historical or Associate Value:** None identified.
  - 3) Contextual Value:** Popular style of 19<sup>th</sup> century construction supports the character of the surrounding vernacular rural landscape.
- Heritage Attributes:** Symmetrical design; steep pitched central gable with window; cross bracing. Relationship of structure to outbuildings and road.

**Potential Direct and Indirect Impacts to the Heritage Attributes:** None anticipated.

**Mitigation of Negative Impacts:** No negative impacts identified, therefore no further mitigation recommended.



**Date:** 19<sup>th</sup> – early 20<sup>th</sup> century

**Description:** Frame barn with asphalt sheet roof, timber frame and concrete block foundation. Two metal bins adjacent.

**Potential CHVI According to O. Reg. 9/06:**

- 1) Design or Physical Value:** 19<sup>th</sup> – early 20<sup>th</sup> century example of frame barn, which although common throughout the study area is increasingly rare throughout the province.
  - 2) Historical or Associate Value:** None identified.
  - 3) Contextual Value:** Supports the agricultural character of the surrounding vernacular rural landscape.
- Heritage Attribute:** Timber frame. Relationship of structure to house and road.

**Potential Direct and Indirect Impacts to the Heritage Attributes:** None anticipated.

**Mitigation of Negative Impacts:** No negative impacts identified, therefore no further mitigation recommended.



## APPENDIX A BUILT HERITAGE INVENTORY

### Site #28– 69804 Shipka Line (Municipality of South Huron)



**Date:** Late 19<sup>th</sup> century

**Description:** One and one half storey yellow brick, side gabled, metal roofed, house on a concrete foundation. House has a small central gabled dormer over a gable roofed, enclosed porch/entry hall with a half-height brick wall on a similar foundation as the house.

**Potential CHVI According to O. Reg. 9/06:**

**1) Design or Physical Value:** None identified.

**2) Historical or Associate Value:** None identified.

**3) Contextual Value:** None identified.

Not determined to have cultural heritage value or interest.

**Potential Direct and Indirect Impacts to the Heritage Attributes:** CHVI was not identified, therefore impacts were not assessed.

**Mitigation of Negative Impacts:** Impacts were not identified, therefore mitigation is not recommended or necessary.



**APPENDIX A  
BUILT HERITAGE INVENTORY**

**Site #29 – 69872 Shipka Line (Municipality of South Huron)**



**Date:** Late 19<sup>th</sup> century

**Description:** One and one half storey yellow brick, side gabled, metal roofed, house on an undetermined foundation. House has a small central gable over a side gable roofed, enclosed porch/entry hall with a half-height brick wall on a similar foundation as the house.

**Potential CHVI According to O. Reg. 9/06:**

**1) Design or Physical Value:** Representative of mid-late 19<sup>th</sup> century Vernacular Gothic Revival design, popular throughout southwestern Ontario.

**2) Historical or Associate Value:** None identified.

**3) Contextual Value:** Popular style of 19<sup>th</sup> century construction supports the character of the surrounding vernacular rural landscape.

**Heritage Attributes:** Symmetrical design; brick; steep pitched central gable with window. Relationship of structure to outbuilding and road.

**Potential Direct and Indirect Impacts to the Heritage Attributes:** None anticipated.

**Mitigation of Negative Impacts:** No negative impacts identified, therefore no further mitigation recommended.



**Date:** 19<sup>th</sup> – 20<sup>th</sup> century

**Description:** Timber framed, wood sided, metal roofed, side gabled barn on a concrete foundation. Side shed addition.

**Potential CHVI According to O. Reg. 9/06:**

**1) Design or Physical Value:** 19<sup>th</sup> – early 20<sup>th</sup> century example of frame barn, which although common throughout the study area is increasingly rare throughout the province.

**2) Historical or Associate Value:** None identified.

**3) Contextual Value:** Supports the agricultural character of the surrounding vernacular rural landscape.

**Heritage Attribute:** Timber frame. Relationship of structure to house and road.

**Potential Direct and Indirect Impacts to the Heritage Attributes:** None anticipated.

**Mitigation of Negative Impacts:** No negative impacts identified, therefore no further mitigation recommended.



**APPENDIX A  
BUILT HERITAGE INVENTORY**

**Site #30 – 69872 Shipka Line (Municipality of South Huron)**



**Date:** Late 19<sup>th</sup> century

**Description:** One and one half storey side gabled house with a steep roof pitch and prominent central dormer, modern siding and undetermined foundation. Vernacular design elements include symmetrical design, central window extending into the dormer. Rear addition and modern front porch entrance.

**Potential CHVI According to O. Reg. 9/06:**

1) **Design or Physical Value:** None identified.  
 2) **Historical or Associate Value:** None identified.  
 3) **Contextual Value:** None identified.  
 Not determined to have cultural heritage value or interest.

**Potential Direct and Indirect Impacts to the Heritage Attributes:** CHVI was not identified, therefore impacts were not assessed.

**Mitigation of Negative Impacts:** Impacts were not identified, therefore mitigation is not recommended or necessary.



**Date:** 20<sup>th</sup> century

**Description:** Front gabled shed with metal roof, metal exterior and undetermined foundation.

**Potential CHVI According to O. Reg. 9/06:**

1) **Design or Physical Value:** None identified.  
 2) **Historical or Associate Value:** None identified.  
 3) **Contextual Value:** None identified.  
 Not determined to have cultural heritage value or interest.

**Potential Direct and Indirect Impacts to the Heritage Attributes:** CHVI was not identified, therefore impacts were not assessed.

**Mitigation of Negative Impacts:** Impacts were not identified, therefore mitigation is not recommended or necessary.





## APPENDIX A BUILT HERITAGE INVENTORY

### Site #31 – 69881 Shipka Line (Municipality of South Huron)



**Date:** Various (19<sup>th</sup> and 20<sup>th</sup> century)

**Description:** One and one half storey L-shaped house with cross gabled roof with a medium pitch, modern siding and stone foundation. Front gabled single storey extends from side gabled one and one half storey portion. Modern rear and side additions.

**Potential CHVI According to O. Reg. 9/06:**

**1) Design or Physical Value:** None identified.

**2) Historical or Associate Value:** None identified.

**3) Contextual Value:** None identified.

Not determined to have cultural heritage value or interest.

**Potential Direct and Indirect Impacts to the Heritage Attributes:** CHVI was not identified, therefore impacts were not assessed.

**Mitigation of Negative Impacts:** Impacts were not identified, therefore mitigation is not recommended or necessary.



## APPENDIX A BUILT HERITAGE INVENTORY

### Site #32 – 70538 Shipka Line (Municipality of South Huron)



**Date:** 1890s – 1920s

**Description:** Two storey hipped roof house with lower cross gable and medium roof pitch, yellow brick exterior with two storey porch and concrete covered foundation. Vernacular Queen Anne design elements include asymmetrical design, front facing gables, decorative gable ornaments including starburst, and dentils. Rear addition.

**Potential CHVI According to O. Reg. 9/06:**

**1) Design or Physical Value:** Representative of 19th – early 20th century two storey Vernacular Queen Anne design, popular throughout southwestern Ontario.

**2) Historical or Associate Value:** None identified.

**3) Contextual Value:** Popular style of 19<sup>th</sup> – 20<sup>th</sup> century construction supports the character of the surrounding vernacular landscape.

**Heritage Attributes:** Two storey; brick; asymmetrical, hipped roof with front gable; decorative brackets.

**Potential Direct and Indirect Impacts to the Heritage Attributes:** None anticipated.

**Mitigation of Negative Impacts:** No negative impacts identified, therefore no further mitigation recommended.



**APPENDIX A  
BUILT HERITAGE INVENTORY**

**Site #33 – 70352 Shipka Line (Municipality of South Huron)**



**Date:** 19<sup>th</sup> – early 20<sup>th</sup> century

**Description:** One and one half storey side gabled house with a medium roof pitch, modern siding and concrete foundation. Rear addition and modern covered central entryway.

**Potential CHVI According to O. Reg. 9/06:**

- 1) **Design or Physical Value:** None identified.
  - 2) **Historical or Associate Value:** None identified.
  - 3) **Contextual Value:** None identified.
- Not determined to have cultural heritage value or interest.

**Potential Direct and Indirect Impacts to the Heritage Attributes:** None anticipated.

**Mitigation of Negative Impacts:** No negative impacts identified, therefore no further mitigation recommended.



**Date:** Various (19<sup>th</sup> and 20<sup>th</sup> century)

**Description:** Primary barn structure is a frame barn with metal roof, timber frame and concrete covered foundation. Single storey shed addition located at rear.

**Potential CHVI According to O. Reg. 9/06:**

- 1) **Design or Physical Value:** 19<sup>th</sup> – early 20<sup>th</sup> century example of frame barn, which although common throughout the study area is increasingly rare throughout the province.
  - 2) **Historical or Associate Value:** None identified.
  - 3) **Contextual Value:** Supports the agricultural character of the surrounding vernacular rural landscape.
- Heritage Attribute:** Timber frame. Relationship of structure to road.

**Potential Direct and Indirect Impacts to the Heritage Attributes:** None anticipated.

**Mitigation of Negative Impacts:** No negative impacts identified, therefore no further mitigation recommended.



**APPENDIX A  
BUILT HERITAGE INVENTORY**

**Site #34 – 70298 Shipka Line (Municipality of South Huron)**



**Date:** 19<sup>th</sup> – early 20<sup>th</sup> century

**Description:** One and one half storey front gabled house with single storey side gable, medium roof pitch, modern siding and painted concrete foundation.

**Potential CHVI According to O. Reg. 9/06:**

- 1) **Design or Physical Value:** None identified.
  - 2) **Historical or Associate Value:** None identified.
  - 3) **Contextual Value:** None identified.
- Not determined to have cultural heritage value or interest.

**Potential Direct and Indirect Impacts to the Heritage Attributes:** CHVI was not identified, therefore impacts were not assessed.

**Mitigation of Negative Impacts:** Impacts were not identified, therefore mitigation is not recommended or necessary



**Date:** Various (19<sup>th</sup> and 20<sup>th</sup> century)

**Description:** Primary barn is a frame barn with multiple shed additions, metal roof, timber frame and stone foundation. Concrete silo at rear and single storey shed with metal roof, timber frame and undetermined foundation.

**Potential CHVI According to O. Reg. 9/06:**

- 1) **Design or Physical Value:** 19<sup>th</sup> – early 20<sup>th</sup> century example of frame barn, which although common throughout the study area is increasingly rare throughout the province.
  - 2) **Historical or Associate Value:** None identified.
  - 3) **Contextual Value:** Supports the agricultural character of the surrounding vernacular rural landscape.
- Heritage Attribute:** Timber frame. Relationship of structure to road.

**Potential Direct and Indirect Impacts to the Heritage Attributes:** None anticipated.

**Mitigation of Negative Impacts:** No negative impacts identified, therefore no further mitigation recommended.



**APPENDIX A  
BUILT HERITAGE INVENTORY**

**Site #35 – 70205 Shipka Line (Municipality of South Huron)**



**Date:** 1890s – 1920s

**Description:** Two storey hipped roof house with lower cross gable and medium roof pitch, yellow brick exterior and apparent concrete foundation. Vernacular Queen Anne design elements include asymmetrical design, front facing gable, decorative cornices and two storey front porch. Covered front cross gable and modern porch.

**Potential CHVI According to O. Reg. 9/06:**

**1) Design or Physical Value:** Representative of 19th – early 20th century two storey Vernacular Queen Anne design, popular throughout southwestern Ontario.

**2) Historical or Associate Value:** None identified.

**3) Contextual Value:** Popular style of 19<sup>th</sup> – 20<sup>th</sup> century construction supports the character of the surrounding vernacular landscape.

**Heritage Attributes:** Two storey; brick; asymmetrical, hipped roof with projecting front gable; decorative brackets.

**Potential Direct and Indirect Impacts to the Heritage Attributes:** None anticipated.

**Mitigation of Negative Impacts:** No negative impacts identified, therefore no further mitigation recommended.



**APPENDIX A  
BUILT HERITAGE INVENTORY**

**Site #36 – 37343 Crediton Line (Municipality of South Huron)**



**Date:** 1860s – 1890s

**Description:** One and one half storey cross gabled yellow brick house with a medium roof pitch and multiple steeply pitched cross gables, modern siding and undetermined foundation. Asymmetrical design with central window that extends into front gable. Front porch with central entryway. Addition at rear.

**Potential CHVI According to O. Reg. 9/06:**

- 1) Design or Physical Value:** Representative of 19<sup>th</sup> century vernacular design, popular throughout southwestern Ontario.
  - 2) Historical or Associate Value:** None identified.
  - 3) Contextual Value:** Popular style of 19<sup>th</sup> century construction supports the character of the surrounding vernacular rural landscape.
- Heritage Attributes:** Symmetrical design; steep pitched central gable with window. Relationship of structure to outbuildings and road.

**Potential Direct and Indirect Impacts to the Heritage Attributes:** None anticipated.

**Mitigation of Negative Impacts:** No negative impacts identified, therefore no further mitigation recommended.



**Date:** Various (19<sup>th</sup> and 20<sup>th</sup> century)

**Description:** Primary barn is a gambrel roofed frame barn with rear gable addition, a metal roof, timber frame and stone foundation. The site contains multiple out buildings including a single storey yellow brick structure.

**Potential CHVI According to O. Reg. 9/06:**

- 1) Design or Physical Value:** 19<sup>th</sup> – early 20<sup>th</sup> century example of frame barn, which although common throughout the study area is increasingly rare throughout the province.
  - 2) Historical or Associate Value:** None identified.
  - 3) Contextual Value:** Supports the agricultural character of the surrounding vernacular rural landscape.
- Heritage Attribute:** Timber frame. Relationship of structure to house and road.

**Potential Direct and Indirect Impacts to the Heritage Attributes:** None anticipated.

**Mitigation of Negative Impacts:** No negative impacts identified, therefore no further mitigation recommended.



**APPENDIX A  
BUILT HERITAGE INVENTORY**

**Site #37 – 37391 Crediton Line (Municipality of South Huron)**



**Date:** 1860s – 1890s

**Description:** One and one half storey side gabled house with a steep roof pitch and prominent central gable, modern siding and concrete foundation. Vernacular Gothic Revival design elements include symmetrical design and a central window extending into the gable with possible wood shingles.

**Potential CHVI According to O. Reg. 9/06:**

- 1) Design or Physical Value:** Representative of mid-late 19<sup>th</sup> century Vernacular Gothic Revival design, popular throughout southwestern Ontario.
  - 2) Historical or Associate Value:** None identified.
  - 3) Contextual Value:** Popular style of 19<sup>th</sup> century construction supports the character of the surrounding vernacular rural landscape.
- Heritage Attributes:** Symmetrical design; steep pitched central gable with window. Relationship of structure to outbuilding and road.

**Potential Direct and Indirect Impacts to the Heritage Attributes:** None anticipated.

**Mitigation of Negative Impacts:** No negative impacts identified, therefore no further mitigation recommended.



**Date:** 19<sup>th</sup> – early 20<sup>th</sup> century

**Description:** Frame barn with metal roof, timber frame and undetermined foundation.

**Potential CHVI According to O. Reg. 9/06:**

- 1) Design or Physical Value:** 19<sup>th</sup> – early 20<sup>th</sup> century example of frame barn, which although common throughout the study area is increasingly rare throughout the province.
  - 2) Historical or Associate Value:** None identified.
  - 3) Contextual Value:** Supports the agricultural character of the surrounding vernacular rural landscape.
- Heritage Attribute:** Timber frame. Relationship of structure to house and road.

**Potential Direct and Indirect Impacts to the Heritage Attributes:** None anticipated.

**Mitigation of Negative Impacts:** No negative impacts identified, therefore no further mitigation recommended.



**APPENDIX A  
BUILT HERITAGE INVENTORY**

**Site #38 – 69661 Bronson Line (Municipality of South Huron)**



**Date:** 1860s – 1890s

**Description:** One and one half storey cross gabled brick veneer house with a medium roof pitch, medium pitched cross gable, steeply pitched gable and concrete foundation. Symmetrical design appears to be a T-plan with a central window that reaches into the central gable. Modern addition at rear, small front porch and covered side porch.

**Potential CHVI According to O. Reg. 9/06:**

- 1) **Design or Physical Value:** Representative of 19<sup>th</sup> century vernacular design, popular throughout southwestern Ontario.
  - 2) **Historical or Associate Value:** None identified.
  - 3) **Contextual Value:** Popular style of 19<sup>th</sup> century construction supports the character of the surrounding vernacular rural landscape.
- Heritage Attributes:** Steep pitched gables with window. Relationship of structure to outbuildings and road.

**Potential Direct and Indirect Impacts to the Heritage Attributes:** None anticipated.

**Mitigation of Negative Impacts:** No negative impacts identified, therefore no further mitigation recommended.



**Date:** Various (19<sup>th</sup> and 20<sup>th</sup> century)

**Description:** Primary barn appears to be a frame barn with two shed additions, metal roof, timber frame and concrete foundation. Two concrete silos onsite and two metal bins onsite with additional outbuildings.

**Potential CHVI According to O. Reg. 9/06:**

- 1) **Design or Physical Value:** 19<sup>th</sup> – early 20<sup>th</sup> century example of frame barn, which although common throughout the study area is increasingly rare throughout the province.
  - 2) **Historical or Associate Value:** None identified.
  - 3) **Contextual Value:** Supports the agricultural character of the surrounding vernacular rural landscape.
- Heritage Attribute:** Timber frame. Relationship of structure to house and road.

**Potential Direct and Indirect Impacts to the Heritage Attributes:** None anticipated.

**Mitigation of Negative Impacts:** No negative impacts identified, therefore no further mitigation recommended.





## APPENDIX A BUILT HERITAGE INVENTORY

### Site #39 –69562 Bronson Line (Municipality of South Huron)



**Date:** 1860s – 1890s

**Description:** One and one half storey side gabled house with a steep roof pitch and prominent central gable, yellow brick exterior and concrete covered foundation. Vernacular Gothic Revival design elements include symmetrical design, rounded window extending into the steeply pitched central gable, detailed brick work throughout including the quoin-like detailing. Side and rear additions.

**Potential CHVI According to O. Reg. 9/06:**

**1) Design or Physical Value:** Representative of mid-late 19<sup>th</sup> century Vernacular Gothic Revival design, popular throughout southwestern Ontario.

**2) Historical or Associate Value:** None identified.

**3) Contextual Value:** Popular style of 19<sup>th</sup> century construction supports the character of the surrounding vernacular rural landscape.

**Heritage Attributes:** Symmetrical design; brick; steep pitched central gable with rounded window; brick quoins. Relationship of structure to road.

**Potential Direct and Indirect Impacts to the Heritage Attributes:** None anticipated.

**Mitigation of Negative Impacts:** No negative impacts identified, therefore no further mitigation recommended.



**APPENDIX A  
BUILT HERITAGE INVENTORY**

**Site #40 – 69881 Babylon Line (Municipality of South Huron)**



**Date:** Mid 20<sup>th</sup> century

**Description:** One and one half storey side gabled house with a steep roof pitch and prominent central dormer, poly chromatic yellow and red brick exterior and covered concrete foundation. Extensive rear addition and modifications throughout.

**Potential CHVI According to O. Reg. 9/06:**

- 1) Design or Physical Value:** None identified.
- 2) Historical or Associate Value:** None identified.
- 3) Contextual Value:** None identified.

Not determined to have cultural heritage value or interest.

**Potential Direct and Indirect Impacts to the Heritage Attributes:** CHVI was not identified, therefore impacts were not assessed.

**Mitigation of Negative Impacts:** Impacts were not identified, therefore mitigation is not recommended or necessary.



## APPENDIX A BUILT HERITAGE INVENTORY

### Site #41 – 69855 King Street South/Parr Line (Municipality of South Huron)



**Date:** 1860s – 1890s

**Description:** One and one half storey cross gabled house with a steep roof pitch, medium pitched cross gable steeply pitched front gable, modern siding and undetermined foundation. Design appears to be an L-plan with a window that reaches into the central gable. Side addition and covered front porch with brick veneer.

**Potential CHVI According to O. Reg. 9/06:**

**1) Design or Physical Value:** Representative of mid-late 19<sup>th</sup> century vernacular design, popular throughout southwestern Ontario.

**2) Historical or Associate Value:** None identified.

**3) Contextual Value:** Popular style of 19<sup>th</sup> century construction supports the character of the surrounding vernacular rural landscape.

**Heritage Attributes:** Steep pitched gables with window. Relationship of structure to outbuildings and road.

**Potential Direct and Indirect Impacts to the Heritage Attributes:** None anticipated.

**Mitigation of Negative Impacts:** No negative impacts identified, therefore no further mitigation recommended.



**Date:** Various (19<sup>th</sup> and 20<sup>th</sup> century)

**Description:** Frame barn with metal roof, timber frame and concrete foundation. Secondary structure is a single storey shed with metal roof, timber frame and undetermined foundation.

**Potential CHVI According to O. Reg. 9/06:**

**1) Design or Physical Value:** 19<sup>th</sup> – early 20<sup>th</sup> century example of frame barn, which although common throughout the study area is increasingly rare throughout the province.

**2) Historical or Associate Value:** None identified.

**3) Contextual Value:** Supports the agricultural character of the surrounding vernacular rural landscape.

**Heritage Attribute:** Timber frame. Relationship of structure to house and road.

**Potential Direct and Indirect Impacts to the Heritage Attributes:** None anticipated.

**Mitigation of Negative Impacts:** No negative impacts identified, therefore no further mitigation recommended.



**APPENDIX A  
BUILT HERITAGE INVENTORY**

**Site #42 – 70548 Blackbush Line (Municipality of South Huron)**



**Date:** Late 19<sup>th</sup> century

**Description:** One and one half storey side gabled house with medium roof pitch, modern siding and undetermined foundation. Extensive addition at rear.

**Potential CHVI According to O. Reg. 9/06:**

- 1) **Design or Physical Value:** None identified.
  - 2) **Historical or Associate Value:** None identified.
  - 3) **Contextual Value:** None identified.
- Not determined to have cultural heritage value or interest.

**Potential Direct and Indirect Impacts to the Heritage Attributes:** CHVI was not identified, therefore impacts were not assessed.

**Mitigation of Negative Impacts:** Impacts were not identified, therefore mitigation is not recommended or necessary.



**Date:** 19<sup>th</sup> – early 20<sup>th</sup> century

**Description:** Frame barn with single storey shed adjacent to barn. Both structures have metal roofs, timber frames and concrete foundations.

**Potential CHVI According to O. Reg. 9/06:**

- 1) **Design or Physical Value:** 19<sup>th</sup> – early 20<sup>th</sup> century example of frame barn and shed, which although common throughout the study area is increasingly rare throughout the province.
  - 2) **Historical or Associate Value:** None identified.
  - 3) **Contextual Value:** Supports the agricultural character of the surrounding vernacular rural landscape.
- Heritage Attribute:** Timber frame. Relationship of structure to road.

**Potential Direct and Indirect Impacts to the Heritage Attributes:** None anticipated.

**Mitigation of Negative Impacts:** No negative impacts identified, therefore no further mitigation recommended.



**APPENDIX A  
BUILT HERITAGE INVENTORY**

**Site #43 – 70600 Blackbush Line (Municipality of South Huron)**



**Date:** Mid 20<sup>th</sup> century

**Description:** One and one half storey side gabled house with steep roof pitch, central shed dormer, modern siding and brick veneer exterior and undetermined foundation. Symmetrical design with covered front porch. Addition at rear.

**Potential CHVI According to O. Reg. 9/06:**

- 1) **Design or Physical Value:** None identified.
  - 2) **Historical or Associate Value:** None identified.
  - 3) **Contextual Value:** None identified.
- Not determined to have cultural heritage value or interest.

**Potential Direct and Indirect Impacts to the Heritage Attributes:** CHVI was not identified, therefore impacts were not assessed.

**Mitigation of Negative Impacts:** Impacts were not identified, therefore mitigation is not recommended or necessary.



**Date:** 20<sup>th</sup> century

**Description:** Single concrete silo with at least three metal bins onsite.

**Potential CHVI According to O. Reg. 9/06:**

- 1) **Design or Physical Value:** None identified.
  - 2) **Historical or Associate Value:** None identified.
  - 3) **Contextual Value:** None identified.
- Not determined to have cultural heritage value or interest.

**Potential Direct and Indirect Impacts to the Heritage Attributes:** CHVI was not identified, therefore impacts were not assessed.

**Mitigation of Negative Impacts:** Impacts were not identified, therefore mitigation is not recommended or necessary.



**APPENDIX A  
BUILT HERITAGE INVENTORY**

**Site #44 – 70370A and 70370B Goshen Line (Municipality of South Huron)**



**Date:** 1860s – 1890s

**Description:** One and one half storey side gabled house with a steep roof pitch and steeply pitched gable, yellow brick exterior and stone foundation. Asymmetrical in design with Vernacular Gothic Revival design characteristics including a window extending into the dormer of the front facade, open rakes with remnants of brackets, intricate brick frieze and quoin-like triangular detailing.

**Potential CHVI According to O. Reg. 9/06:**

**1) Design or Physical Value:** Representative of mid-late 19<sup>th</sup> century vernacular design, popular throughout southwestern Ontario.

**2) Historical or Associate Value:** None identified.

**3) Contextual Value:** Popular style of 19<sup>th</sup> century construction supports the character of the surrounding vernacular rural landscape.

**Heritage Attributes:** L-shape plan; brick detailing; steep pitched gable with window; wide eaves. Relationship of structure to outbuildings and road.

**Potential Direct and Indirect Impacts to the Heritage Attributes:** None anticipated.

**Mitigation of Negative Impacts:** No negative impacts identified, therefore no further mitigation recommended.



**Date:** Various (20<sup>th</sup> century)

**Description:** Frame barn with later shed addition. Barn has a metal roof, metal siding, and concrete foundation. Various outbuildings onsite.

**Potential CHVI According to O. Reg. 9/06:**

**1) Design or Physical Value:** None identified.

**2) Historical or Associate Value:** None identified.

**3) Contextual Value:** Supports the agricultural character of the surrounding vernacular rural landscape.

**Heritage Attribute:** Relationship of structure to house and road.

**Potential Direct and Indirect Impacts to the Heritage Attributes:** None anticipated.

**Mitigation of Negative Impacts:** No negative impacts identified, therefore no further mitigation recommended.



**APPENDIX A  
BUILT HERITAGE INVENTORY**

**Site #45 – 35545 South Road (Municipality of South Huron)**



**Date:** Late 19<sup>th</sup> century

**Description:** One and one half storey end-gabled house at the rear. Second structure has white vertical wood siding and asphalt shingle roof with one visible gabled dormer with attached second storey porch. Modern single-storey, low pitched, side gabled addition on concrete foundation.

**Potential CHVI According to O. Reg. 9/06:**

1) **Design or Physical Value:** None identified.  
 2) **Historical or Associate Value:** None identified.  
 3) **Contextual Value:** None identified.

Not determined to have cultural heritage value or interest.

**Potential Direct and Indirect Impacts to the Heritage Attributes:** CHVI was not identified, therefore impacts were not assessed.

**Mitigation of Negative Impacts:** Impacts were not identified, therefore mitigation is not recommended or necessary.



**Date:** Various (19<sup>th</sup> and 20<sup>th</sup> century)

**Description:** Multi-structure barn complex includes a timber framed, wood sided, gambrel roofed, T-plan barn with metal roof panels. A full length metal roofed, metal-sided, shed addition attached. Two concrete silos, two metal bins, and one end-gabled metal-roofed, wood-sided out building.

**Potential CHVI According to O. Reg. 9/06:**

1) **Design or Physical Value:** 19<sup>th</sup> – early 20<sup>th</sup> century example of frame barn, which although common throughout the study area is increasingly rare throughout the province.  
 2) **Historical or Associate Value:** None identified.  
 3) **Contextual Value:** Supports the agricultural character of the surrounding vernacular rural landscape.

**Heritage Attribute:** Timber frame. Relationship of structure to road.

**Potential Direct and Indirect Impacts to the Heritage Attributes:** None anticipated.

**Mitigation of Negative Impacts:** No negative impacts identified, therefore no further mitigation recommended.



**APPENDIX A  
BUILT HERITAGE INVENTORY**

**Site #46 – 69481 Bronson Line (Municipality of South Huron )**



**Date:** 1860-1890s

**Description:** One and one half storey side gabled, yellow brick house with a green painted metal roof, steeply pitched center gabled dormer with a single window on an undetermined foundation. House has inset decorative-frieze brickwork and yellow brick shed addition to one gable end with a wood framed, metal sided, asphalt shingled addition attached to it. Modern garage.

**Potential CHVI According to O. Reg. 9/06:**

- 1) Design or Physical Value:** Representative of mid-late 19<sup>th</sup> century Vernacular Gothic Revival design, popular throughout southwestern Ontario.
  - 2) Historical or Associate Value:** None identified.
  - 3) Contextual Value:** Popular style of 19<sup>th</sup> century construction supports the character of the surrounding vernacular rural landscape.
- Heritage Attributes:** Symmetrical design; brick; steep pitched central gable with window. Relationship of structure to outbuilding and road.

**Potential Direct and Indirect Impacts to the Heritage Attributes:** None anticipated.

**Mitigation of Negative Impacts:** No negative impacts identified, therefore no further mitigation recommended.



**Date:** 19<sup>th</sup> – early 20<sup>th</sup> century

**Description:** Timber framed, wood sided, metal roofed, side gabled barn on a yellow brick foundation.

**Potential CHVI According to O. Reg. 9/06:**

- 1) Design or Physical Value:** 19<sup>th</sup> – early 20<sup>th</sup> century example of frame barn, which although common throughout the study area is increasingly rare throughout the province.
  - 2) Historical or Associate Value:** None identified.
  - 3) Contextual Value:** Supports the agricultural character of the surrounding vernacular rural landscape.
- Heritage Attribute:** Timber frame. Relationship of structure to house and road.

**Potential Direct and Indirect Impacts to the Heritage Attributes:** None anticipated.

**Mitigation of Negative Impacts:** No negative impacts identified, therefore no further mitigation recommended.





## APPENDIX A BUILT HERITAGE INVENTORY

### Site #47 – 69482 Bronson Line (Municipality of South Huron)



**Date:** 1890s – 1920s

**Description:** Two storey, hipped roof, yellow brick house on a concrete foundation with a double window and decorative gingerbread work in L gable end. Second storey porch sits in L crux and forms the roof of the first floor porch with modern metal railings and columns. Second storey has a keyhole window above porch and first floor windows are covered with metal awnings. Rear addition with an undetermined roof line and foundation. Modern garage at rear.

**Potential CHVI According to O. Reg. 9/06:**

**1) Design or Physical Value:** Representative of 19th – early 20th century two storey Vernacular Queen Anne design, popular throughout southwestern Ontario.

**2) Historical or Associate Value:** None identified.

**3) Contextual Value:** Popular style of 19<sup>th</sup> – 20<sup>th</sup> century construction supports the character of the surrounding vernacular landscape.

**Heritage Attributes:** Two storey; brick; asymmetrical, hipped roof with projecting front gable; inset porch.

**Potential Direct and Indirect Impacts to the Heritage Attributes:** None anticipated.

**Mitigation of Negative Impacts:** No negative impacts identified, therefore no further mitigation recommended.



## APPENDIX A BUILT HERITAGE INVENTORY

### Site #48 – 69713 Goshen Line (Municipality of South Huron)



**Date:** Various (19<sup>th</sup> and 20<sup>th</sup> century)

**Description:** Wood-sided, white-painted gabled metal roof, on an L-plan barn with metal sided, metal roofed shed addition attached to L. Concrete silo and metal bin adjacent.

**Potential CHVI According to O. Reg. 9/06:**

**1) Design or Physical Value:** 19<sup>th</sup> – early 20<sup>th</sup> century example of frame barn, which although common throughout the study area is increasingly rare throughout the province.

**2) Historical or Associate Value:** None identified.

**3) Contextual Value:** Supports the agricultural character of the surrounding vernacular rural landscape.

**Heritage Attribute:** Timber frame. Relationship of structure to road.

**Potential Direct and Indirect Impacts to the Heritage Attributes:** None anticipated.

**Mitigation of Negative Impacts:** No negative impacts identified, therefore no further mitigation recommended.



## APPENDIX A BUILT HERITAGE INVENTORY

### Site #49 – 38425 Dashwood Line (Municipality of South Huron)



**Date:** 20<sup>th</sup> century

**Description:** Side gabled, timber framed, white painted metal roofed barn with brown painted wood-siding on a brick foundation. Barn has one wood sided, metal roofed, one bay, full height gabled addition on a concrete foundation attached to one of the gabled ends, extending the original roof and sidewall lines.

**Potential CHVI According to O. Reg. 9/06:**

- 1) Design or Physical Value:** None identified.
  - 2) Historical or Associate Value:** None identified.
  - 3) Contextual Value:** Supports the agricultural character of the surrounding vernacular rural landscape.
- Heritage Attribute:** Relationship of structure to road.

**Potential Direct and Indirect Impacts to the Heritage Attributes:** CHVI was not identified, therefore impacts were not assessed.

**Mitigation of Negative Impacts:** Impacts were not identified, therefore mitigation is not recommended or necessary.



**APPENDIX A  
BUILT HERITAGE INVENTORY**

**Site #50 – 72299 Babylon Line (Municipality of Bluewater)**



**Date:** Late 19<sup>th</sup> century

**Description:** One and one half storey side gabled, metal roofed, metal sided, house with a shed dormer and three quarter length enclosed porch under a metal panel shed roof.

**Potential CHVI According to O. Reg. 9/06:**

- 1) **Design or Physical Value:** None identified.
  - 2) **Historical or Associate Value:** None identified.
  - 3) **Contextual Value:** None identified.
- Not determined to have cultural heritage value or interest.

**Potential Direct and Indirect Impacts to the Heritage Attributes:** CHVI was not identified, therefore impacts were not assessed.

**Mitigation of Negative Impacts:** Impacts were not identified, therefore mitigation is not recommended or necessary.



**Date:** 19<sup>th</sup> century

**Description:** Timber framed gambrel roofed barn with metal panel roof, wood siding, on a concrete foundation. One large gable-roofed addition creates an L-plan while a shed roof addition at the rear.

**Potential CHVI According to O. Reg. 9/06:**

- 1) **Design or Physical Value:** 19<sup>th</sup> – early 20<sup>th</sup> century example of frame barn, which although common throughout the study area is increasingly rare throughout the province.
  - 2) **Historical or Associate Value:** None identified.
  - 3) **Contextual Value:** Supports the agricultural character of the surrounding vernacular rural landscape.
- Heritage Attribute:** Timber frame. Relationship of structure to road.

**Potential Direct and Indirect Impacts to the Heritage Attributes:** None anticipated

**Mitigation of Negative Impacts:** No negative impacts identified, therefore no further mitigation recommended.



## APPENDIX A BUILT HERITAGE INVENTORY

### Site #51 – 72257 Babylon Line (Municipality of Bluewater)



**Date:** 1860-1890s

**Description:** One and one half storey yellow brick, side gabled, house with a peaked central dormer over an arched window on an undetermined foundation. House has modern metal panel roof, with decorative raised brick frieze and triangular quoin-like detailing. Unroofed deck porch, modern windows and front door.

**Potential CHVI According to O. Reg. 9/06:**

**1) Design or Physical Value:** Representative of mid-late 19<sup>th</sup> century Vernacular Gothic Revival design, popular throughout southwestern Ontario.

**2) Historical or Associate Value:** None identified.

**3) Contextual Value:** Popular style of 19<sup>th</sup> century construction supports the character of the surrounding vernacular rural landscape.

**Heritage Attributes:** Symmetrical design; brick; steep pitched central gable with rounded window; bay window; brick quoins. Relationship of structure to road.

**Potential Direct and Indirect Impacts to the Heritage Attributes:** None anticipated.

**Mitigation of Negative Impacts:** No negative impacts identified, therefore no further mitigation recommended.



## APPENDIX A BUILT HERITAGE INVENTORY

### Site #52 – 71953 Babylon Line (Municipality of Bluewater)



**Date:** 1860-1890s

**Description:** One and one half storey yellow brick, side gabled house with a steeply peaked central dormer over an arched window on an undetermined foundation. House has a full width covered front porch with a shed roof supported by yellow brick columns. A yellow brick, gable roofed, single storey addition is attached to the back of the house. Two storey modern gabled garage at the rear.

**Potential CHVI According to O. Reg. 9/06:**

**1) Design or Physical Value:** Representative of mid-late 19<sup>th</sup> century Vernacular Gothic Revival design, popular throughout southwestern Ontario.

**2) Historical or Associate Value:** None identified.

**3) Contextual Value:** Popular style of 19<sup>th</sup> century construction supports the character of the surrounding vernacular rural landscape.

**Heritage Attributes:** Symmetrical design; brick; steep pitched central gable with rounded window. Relationship of structure to road.

**Potential Direct and Indirect Impacts to the Heritage Attributes:** None anticipated.

**Mitigation of Negative Impacts:** No negative impacts identified, therefore no further mitigation recommended.



**APPENDIX A  
BUILT HERITAGE INVENTORY**

**Site #53 – 72362 Goshen Line (Municipality of Bluewater)**



**Date:** 1860-1890s

**Description:** One and one half storey side gabled yellow brick house with peaked central gable over a single square window on a stone foundation. House has decorative raised brick work at frieze, over gable-end windows, triangular quoin-like detailing and gingerbread work in gables and along eaves with some decorative brackets. House has a modern enclosed yellow brick, shed roof porch with modern windows.

**Potential CHVI According to O. Reg. 9/06:**

- 1) Design or Physical Value:** Representative of mid-late 19<sup>th</sup> century Vernacular Gothic Revival design, popular throughout southwestern Ontario.
  - 2) Historical or Associate Value:** None identified.
  - 3) Contextual Value:** Popular style of 19<sup>th</sup> century construction supports the character of the surrounding vernacular rural landscape.
- Heritage Attributes:** Symmetrical design; brick; steep pitched central gable with window; gingerbread detailing; decorative brackets. Relationship of structure to out buildings and road.

**Potential Direct and Indirect Impacts to the Heritage Attributes:** None anticipated.

**Mitigation of Negative Impacts:** No negative impacts identified, therefore no further mitigation recommended.



**Date:** 19<sup>th</sup> – early 20<sup>th</sup> century

**Description:** Timber framed, metal roofed, wood sided, side gabled barn with two concrete silos. Additional outbuilding adjacent.

**Potential CHVI According to O. Reg. 9/06:**

- 1) Design or Physical Value:** 19<sup>th</sup> – early 20<sup>th</sup> century example of frame barn, which although common throughout the study area is increasingly rare throughout the province.
  - 2) Historical or Associate Value:** None identified.
  - 3) Contextual Value:** Supports the agricultural character of the surrounding vernacular rural landscape.
- Heritage Attribute:** Timber frame. Relationship of structure to house and road.

**Potential Direct and Indirect Impacts to the Heritage Attributes:** None anticipated

**Mitigation of Negative Impacts:** No negative impacts identified, therefore no further mitigation recommended.



**APPENDIX A  
BUILT HERITAGE INVENTORY**

**Site #54 – 72204 Goshen Line (Municipality of Bluewater)**



**Date:** 1860-1890s

**Description:** One and one half storey L plan house with modern siding, stone foundation and a steeply pitched dormer in L length over a single square window. Covered inset porch. House roof covered in asphalt shingles and has modern windows.

**Potential CHVI According to O. Reg. 9/06:**

- 1) Design or Physical Value:** Representative of mid-late 19<sup>th</sup> century vernacular design, popular throughout southwestern Ontario.
  - 2) Historical or Associate Value:** None identified.
  - 3) Contextual Value:** Popular style of 19<sup>th</sup> century construction supports the character of the surrounding vernacular rural landscape.
- Heritage Attributes:** L-shape plan; steep pitched gable with window. Relationship of structure to outbuildings and road.

**Potential Direct and Indirect Impacts to the Heritage Attributes:** None anticipated

**Mitigation of Negative Impacts:** No negative impacts identified, therefore no further mitigation recommended.



**Date:** Various (19<sup>th</sup> and 20<sup>th</sup> century)

**Description:** Wood framed, metal roofed, side gabled barn on concrete foundation. One asymmetrically roofed, gable end projection attached to barn gable end, with another gabled addition attached to both the initial addition and the original barn side. Concrete silo sits adjacent to barn.

**Potential CHVI According to O. Reg. 9/06:**

- 1) Design or Physical Value:** 19<sup>th</sup> – early 20<sup>th</sup> century example of frame barn, which although common throughout the study area is increasingly rare throughout the province.
  - 2) Historical or Associate Value:** None identified.
  - 3) Contextual Value:** Supports the agricultural character of the surrounding vernacular rural landscape.
- Heritage Attribute:** Timber frame. Relationship of structure to house and road.

**Potential Direct and Indirect Impacts to the Heritage Attributes:** None anticipated

**Mitigation of Negative Impacts:** No negative impacts identified, therefore no further mitigation recommended.





**APPENDIX A  
BUILT HERITAGE INVENTORY**

**Site #55 – 71962 Bronson Line (Municipality of Bluewater)**



**Date:** 1860-1890s

**Description:** One and one half storey side gabled yellow brick house on a symmetrical plan with a steeply peaked central dormer over an arched single window on an undetermined foundation. House has decorative raised brick quoin-like detailing and similar features framing the front door and central dormer.

**Potential CHVI According to O. Reg. 9/06:**

**1) Design or Physical Value:** Representative of mid-late 19<sup>th</sup> century Vernacular Gothic Revival design, popular throughout southwestern Ontario.

**2) Historical or Associate Value:** None identified.

**3) Contextual Value:** Popular style of 19<sup>th</sup> century construction supports the character of the surrounding vernacular rural landscape.

**Heritage Attributes:** Symmetrical design; brick; steep pitched central gable with rounded window. Relationship of structure to road and outbuildings.

**Potential Direct and Indirect Impacts to the Heritage Attributes:** None anticipated

**Mitigation of Negative Impacts:** No negative impacts identified, therefore no further mitigation recommended.



**Date:** 19<sup>th</sup> – early 20<sup>th</sup> century

**Description:** Timber framed side gabled barn with metal roof and wood siding on a concrete foundation. Small end gabled garage or out building behind barn.

**Potential CHVI According to O. Reg. 9/06:**

**1) Design or Physical Value:** 19<sup>th</sup> – early 20<sup>th</sup> century example of frame barn, which although common throughout the study area is increasingly rare throughout the province.

**2) Historical or Associate Value:** None identified.

**3) Contextual Value:** Supports the agricultural character of the surrounding vernacular rural landscape.

**Heritage Attribute:** Timber frame. Relationship of structure to house and road.

**Potential Direct and Indirect Impacts to the Heritage Attributes:** None anticipated

**Mitigation of Negative Impacts:** No negative impacts identified, therefore no further mitigation recommended.



**APPENDIX A  
BUILT HERITAGE INVENTORY**

**Site #56 – 71726 Bronson Line (Municipality of Bluewater)**



**Date:** 1860s-1890s

**Description:** One and one half storey, red brick, side gabled house with a steeply peaked central dormer on a symmetrical plan with an undetermined foundation. Gabled addition at rear with a single shed dormer and porch.

**Potential CHVI According to O. Reg. 9/06:**

**1) Design or Physical Value:** Representative of mid-late 19<sup>th</sup> century Vernacular Gothic Revival design, popular throughout southwestern Ontario.

**2) Historical or Associate Value:** None identified.

**3) Contextual Value:** Popular style of 19<sup>th</sup> century construction supports the character of the surrounding vernacular rural landscape.

**Heritage Attributes:** Symmetrical design; red brick; steep pitched central gable with rounded window. Relationship of structure to outbuildings and road.

**Potential Direct and Indirect Impacts to the Heritage Attributes:** None anticipated

**Mitigation of Negative Impacts:** No negative impacts identified, therefore no further mitigation recommended.



**Date:** Various (19<sup>th</sup> and 20<sup>th</sup> century)

**Description:** Timber framed side gabled barn with a metal roof and wood siding on a stone foundation. Concrete silo sits adjacent to barn.

**Potential CHVI According to O. Reg. 9/06:**

**1) Design or Physical Value:** 19<sup>th</sup> – early 20<sup>th</sup> century example of frame barn, which although common throughout the study area is increasingly rare throughout the province.

**2) Historical or Associate Value:** None identified.

**3) Contextual Value:** Supports the agricultural character of the surrounding vernacular rural landscape.

**Heritage Attribute:** Timber frame. Relationship of structure to house and road.

**Potential Direct and Indirect Impacts to the Heritage Attributes:** None anticipated

**Mitigation of Negative Impacts:** No negative impacts identified, therefore no further mitigation recommended.



## APPENDIX A BUILT HERITAGE INVENTORY

### Site #57 – 71684 Bronson Line (Municipality of Bluewater)



**Date:** 19<sup>th</sup> – 20<sup>th</sup> century

**Description:** One and one half storey T plan or end gabled house with a single-storey addition creating a T plan on an undetermined foundation. Additional single-storey addition at gable end. Windows and doors are modern and a gabled garage sits behind the property.

**Potential CHVI According to O. Reg. 9/06:**

**1) Design or Physical Value:** None identified.

**2) Historical or Associate Value:** None identified.

**3) Contextual Value:** None identified.

Not determined to have cultural heritage value or interest.

**Potential Direct and Indirect Impacts to the Heritage Attributes:** CHVI was not identified, therefore impacts were not assessed.

**Mitigation of Negative Impacts:** Impacts were not identified, therefore mitigation is not recommended or necessary.



**APPENDIX A  
BUILT HERITAGE INVENTORY**

**Site #58 – 71642 Bronson Line (Municipality of Bluewater)**



**Date:** 1860s – 1880s

**Description:** One and one half storey side gabled house with a medium roof pitch and prominent central gable, white sided exterior and undetermined foundation. Vernacular Gothic Revival design elements include symmetrical design and single window extending into the steeply pitched front gable. Modern rear addition.

**Potential CHVI According to O. Reg. 9/06:**

**1) Design or Physical Value:** Representative of mid-late 19<sup>th</sup> century Vernacular Gothic Revival design, popular throughout southwestern Ontario.

**2) Historical or Associate Value:** None identified.

**3) Contextual Value:** Popular style of 19<sup>th</sup> century construction supports the character of the surrounding vernacular rural landscape.

**Heritage Attributes:** Symmetrical design; brick; steep pitched central gable with window. Relationship of structure to outbuildings and road.

**Potential Direct and Indirect Impacts to the Heritage Attributes:** None anticipated.

**Mitigation of Negative Impacts:** No negative impacts identified, therefore no further mitigation recommended.



**Date:** 19<sup>th</sup> – early century

**Description:** Timber framed side gabled barn with a metal roof and white painted wood siding on a stone foundation. Smaller metal framed, wood sided outbuilding near barn.

**Potential CHVI According to O. Reg. 9/06:**

**1) Design or Physical Value:** 19<sup>th</sup> – early 20<sup>th</sup> century example of frame barn, which although common throughout the study area is increasingly rare throughout the province.

**2) Historical or Associate Value:** None identified.

**3) Contextual Value:** Supports the agricultural character of the surrounding vernacular rural landscape.

**Heritage Attribute:** Timber frame. Relationship of structure to house and road.

**Potential Direct and Indirect Impacts to the Heritage Attributes:** None anticipated.

**Mitigation of Negative Impacts:** No negative impacts identified, therefore no further mitigation recommended.



## APPENDIX A BUILT HERITAGE INVENTORY

### Site #59 – 72199 Bronson Line (Municipality of Bluewater)



**Date:** Late 19<sup>th</sup> century

**Description:** One and one half storey side gabled house, with medium roof pitch, modern siding and concrete foundation. Likely originally symmetrical in design although heavily modified throughout including rear 'salt-box' addition.

**Potential CHVI According to O. Reg. 9/06:**

**1) Design or Physical Value:** None identified.

**2) Historical or Associate Value:** None identified.

**3) Contextual Value:** None identified.

Not determined to have cultural heritage value or interest.

**Potential Direct and Indirect Impacts to the Heritage Attributes:** CHVI was not identified, therefore impacts were not assessed.

**Mitigation of Negative Impacts:** Impacts were not identified, therefore mitigation is not recommended or necessary.



## APPENDIX A BUILT HERITAGE INVENTORY

### Site #60 – 72206A (Municipality of Bluewater)



**Date:** Late 19<sup>th</sup> century

**Description:** One and one half storey side gabled, red-painted, metal panel-sided house with simple gabled entry porch attached and metal panel roofs on a stone foundation.

**Potential CHVI According to O. Reg. 9/06:**

**1) Design or Physical Value:** None identified.

**2) Historical or Associate Value:** None identified.

**3) Contextual Value:** None identified.

Not determined to have cultural heritage value or interest.

**Potential Direct and Indirect Impacts to the Heritage Attributes:** CHVI was not identified, therefore impacts were not assessed.

**Mitigation of Negative Impacts:** Impacts were not identified, therefore mitigation is not recommended or necessary.

At Golder Associates we strive to be the most respected global company providing consulting, design, and construction services in earth, environment, and related areas of energy. Employee owned since our formation in 1960, our focus, unique culture and operating environment offer opportunities and the freedom to excel, which attracts the leading specialists in our fields. Golder professionals take the time to build an understanding of client needs and of the specific environments in which they operate. We continue to expand our technical capabilities and have experienced steady growth with employees who operate from offices located throughout Africa, Asia, Australasia, Europe, North America, and South America.

Africa	+ 27 11 254 4800
Asia	+ 86 21 6258 5522
Australasia	+ 61 3 9862 3500
Europe	+ 356 21 42 30 20
North America	+ 1 800 275 3281
South America	+ 55 21 3095 9500

[solutions@golder.com](mailto:solutions@golder.com)  
[www.golder.com](http://www.golder.com)

**Golder Associates Ltd.**  
**309 Exeter Road, Unit #1**  
**London, Ontario, N6L 1C1**  
**Canada**  
**T: +1 (519) 652 0099**

