

No.
Date June 14/12 11-6pm Page

POND - photos - 247, 248
LOWLYING AREA
GRASSES,

WET EDGES - RUSHES
NO CROSSINGS

POND E, CROSSINGS
45cm wide Culvert
PH25 - PH31 (GPS) ON SOUTH SIDE

PH32 - CULVERT ON N SIDE
DRY - GRASSES, NO WATER
BURIED - DRY

PH33 - FUNCTIONS AS DRAINAGE
GRASSES INDICATE DRY
FOR SOME TIME

PH 249, 250 SOUTH SIDE (CAMERA)
251/252 NORTH SIDE

BW#2
WILLOW, DOGWOOD / RED OSIER
PH35 SWAMPY AREA
MINK FROG
GREEN FROG

No.
Date June 14/12 2:00pm Page

PH36 SOUTH CULVERT
PH37 NORTH CULVERT

PH38 CHANNEL NS OF ROAD (N SIDE)
NORTH CULVERT ~ 45cm WIDTH
SITE } ~ 80cm wetted width DS
1.2m ~~at~~ at culvert
60cm wetted depth

OILY SHEEN
MOSTLY ORGANIC SUBSTRATE

SOME GRAVEL, WOODY DEBRIS
1 FISH OBSERVED (MINK
LEARNED FROM
BULL FROG)

TEMP = 17°C
RAPIDIAN COVER - OPEN AT CULVERT
NO 10% DS

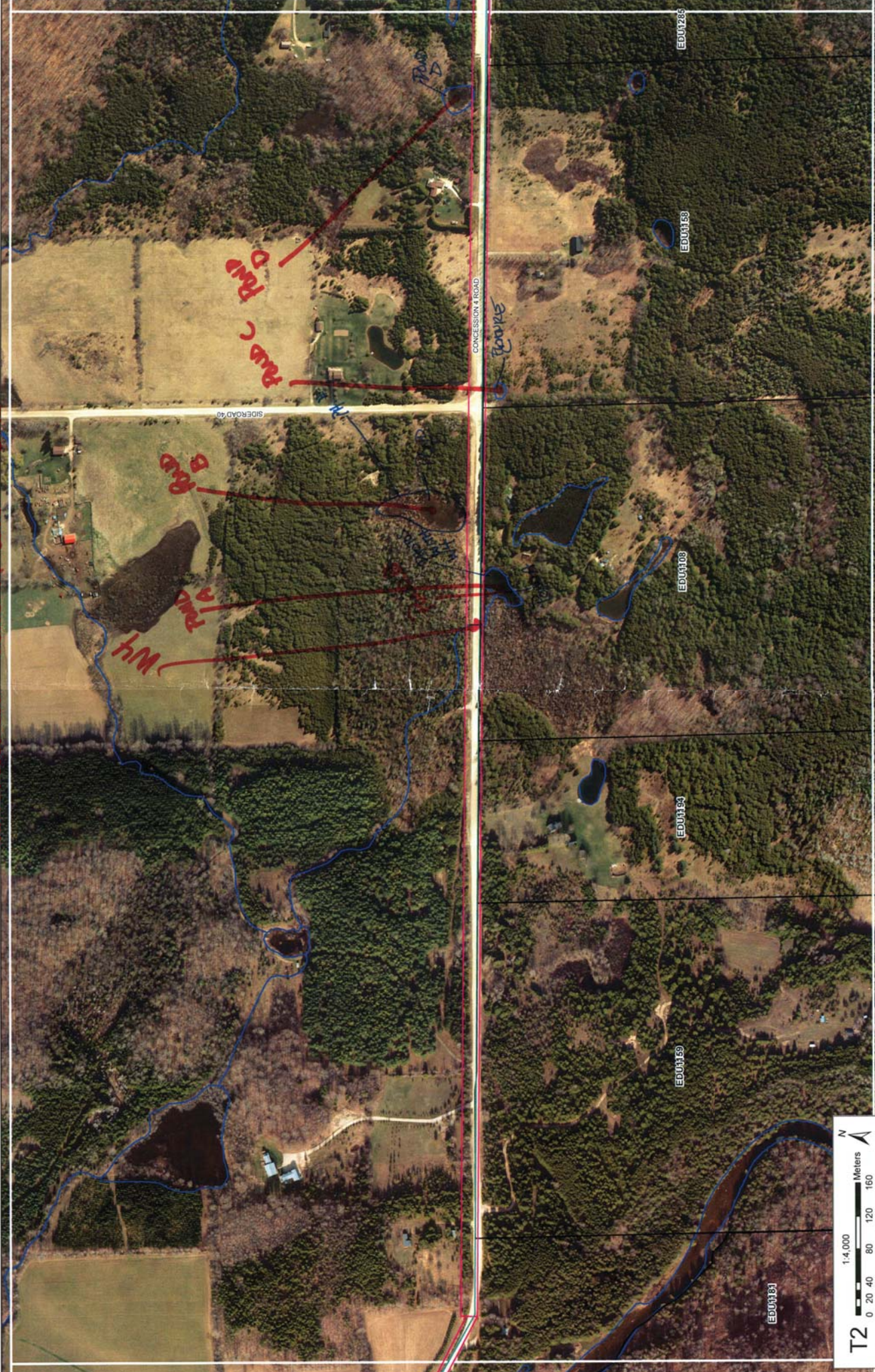
SOUTH SIDE - POOL LIKE
N50cm DEEP

ORGANIC RICH
VERY LITTLE FLOW (MOVEMENT)
1m WIDE

PH 264/65 SOUTH SIDE
PH 42 - ALONG ROADSIDE - NOT A LOT OF
ROAM

END OF DRAINAGE PH 44
MARSHY - PRAIRIE-LIKE ALONG
ROAD SIDE (PH 44) PH 43 - REMAINS F

WATERLOO'S VINEYARD L&L



T2
1:4,000
0 20 40 80 120 160
Meters
N