

FOD5  
managed maple forest  
- little to no undergrowth

ACESASA' Poptem CORAL  
CARPEN. BetPMP OSTVIR6  
Springbeauty Asteris. PRUSERO  
TILAMER VIMAMER

NEXT TO WETLAND Photo 132  
FOREST Carex sp. PROVIR6  
FRAPEN FAGGRAN OSTVIR6  
service ACESASA  
GENROPS POPTRAM  
JAROFF. ABESACI

WETLAND  
ONOSON  
CORSTOL  
SARIP.  
Phacelia.  
LEMMING

- Duck  
- Peppers + chorus frog

March 22 / 12

SWD

FOD near MRS2 FOD6

↳ depression - creek Photo 131

OSTVIR6 CORAL  
Springbeauty dwarf scumf  
ACESASA Carex pens. FAGGRAN  
Bet Aleg' PTEAQUI DRY CRI  
VIBLANT. ABI BALS. ABI BALS  
FRAMER FRAVIR6 FRIANIGI  
CALPALV. PICELANG HEMIOC  
SWAMP Thoochi  
Seeps - gasoline sheen

FOM photo 14  
Hemlock Carex pens. CORANT;  
OSTVIR6 FRAMER TILAMER  
FAGGRAN. ABESACI FRAVIR6

OPEN WATER silver maple swamp.  
ABESACI  
CORSTOL ONOSON.  
potential for turtle + frog + salamander  
peppers + chorus.



March 22/12

TURBINE 14 Photos 147 -

- Pond - lots of algae  
 - likely dry in summer.  
 - surrounded by Phacelia.  
 - no sound of frogs

Chickadee

FORD SWM

180

ABIBAS Dry cat.

FERNIGRA

POPTERON nettle

Thrucci

Corstal Phacelia

Elderberry!

Betalle Umanh.

ACESA

VIBURNUM PRUNUS sp.

DRYUMTH

RIBES DRYCIS

Naked mite lookalike

Glyshi Calpalu

Betalle

Ran hipp.

ACERUS

zoom

FORD/FOM

Limited to no understory

OSTVIEG

Corstal

FAGGRIANG occasional

ACESASA

PRUSO

TIPROFF

Cathwood

DRYUMTH

GETROB

ABIBALS

PRUVIEG

RANACI

TUSTANE

## AHF Field Notes May 15 2012

Extracted from Trimble Outdoors in Iphone 4S

### **POI 1**

Location: 17T 0525606E 4893638N

start

### **POI 1**

Location: 17T 0525606E 4893638N

start

### **Photo 1**

Location: 17T 0525735E 4892911N

### **Photo 2**

Location: 17T 0525726E 4892907N

### **POI 2**

Location: 17T 0525700E 4892873N

watercress. water temp 12c

### **Photo 3**

Location: 17T 0525693E 4892873N

### **Photo 4**

Location: 17T 0525702E 4892817N

pileated

### **POI 3**

Location: 17T 0525709E 4892810N

decid forest area. knoll

### **Photo 5**

Location: 17T 0525706E 4892806N

### **POI 4**

Location: 17T 0525679E 4892823N

yellow bellied sapsucker

### **POI 5**

Location: 17T 0525657E 4892858N

swamp. cold water. jewelweed. abundant dead trees

### **Photo 6**

Location: 17T 0525657E 4892858N

### **POI 6**

Location: 17T 0525555E 4893068N

rockpile

### **Photo 7**

Location: 17T 0525555E 4893068N

### **Photo 8**

Location: 17T 0525542E 4893089N

### **Photo 9**

Location: 17T 0525482E 4893115N

marshetigold and ironstaining

AHF Field Notes May 15 2012

Extracted from Trimble Outdoors in Iphone 4S

**Photo 10**

Location: 17T 0525394E 4893124N

**POI 7**

Location: 17T 0525397E 4893156N

**Photo 11**

Location: 17T 0525397E 4893156N

**POI 1**

Location: 17T 0525740E 4894270N

rickpile

**Photo 1**

Location: 17T 0525739E 4894269N

**POI 2**

Location: 17T 0525710E 4894318N

small rock pile

**Photo 2**

Location: 17T 0525710E 4894318N

neighbor property. large glacier eratica

**Photo 3**

Location: 17T 0527569E 4893454N

**Photo 4**

Location: 17T 0527521E 4893371N

v large rock pile

**Photo 5**

Location: 17T 0527538E 4893161N

small rock pile

**Photo 1**

Location: 17T 0528813E 4892305N

**Photo 2**

Location: 17T 0528808E 4892289N

**Photo 3**

Location: 17T 0528769E 4892241N

deeply embedde large tocks

**Photo 4**

Location: 17T 0528636E 4892243N

**Photo 5**

Location: 17T 0528633E 4892245N

**POI 1**

Location: 17T 0528631E 4892251N

wet area w frogs. chimney crayfish burrows

AHF Field Notes May 15 2012

Extracted from Trimble Outdoors in Iphone 4S

**Photo 6**

Location: 17T 0528631E 4892251N

**POI 2**

Location: 17T 0528614E 4892244N

iron staining

**Photo 7**

Location: 17T 0528533E 4892341N

**POI 3**

Location: 17T 0528535E 4892334N

large seepage area

**Photo 8**

Location: 17T 0528517E 4892550N





Mdy15+16 2012





**LEGEND**

- Turbine Layout (2012-04-27)
- Roads (2012-05-02)
- Collection (2012-05-02)
- Construction Disturbance (2012-05-02)
- ▭ Project Boundary (Dec 2011)
- ▭ Parcel Boundary
- Lease Status**
- ▭ Targeted
- ▭ Pending
- ▭ Signed Lease
- ▭ Not Interested

May 15/12  
 - Turbine 12, 15, 14, 13  
 - Transmission Route from 13 → county road. 4

May 16/12  
 Turbine 11 + ALT 3, 8, 10  
 Transmission Line  
 ALT 1 + ALT 2 to county road. 2, 3

American Bitten

**East Durham Wind Farm  
 2012-05-02 Layout**



Project	TAB119	Figure	
Date	May, 2012	Prepared By:	KC
Scale	1:45,000	Verified By:	

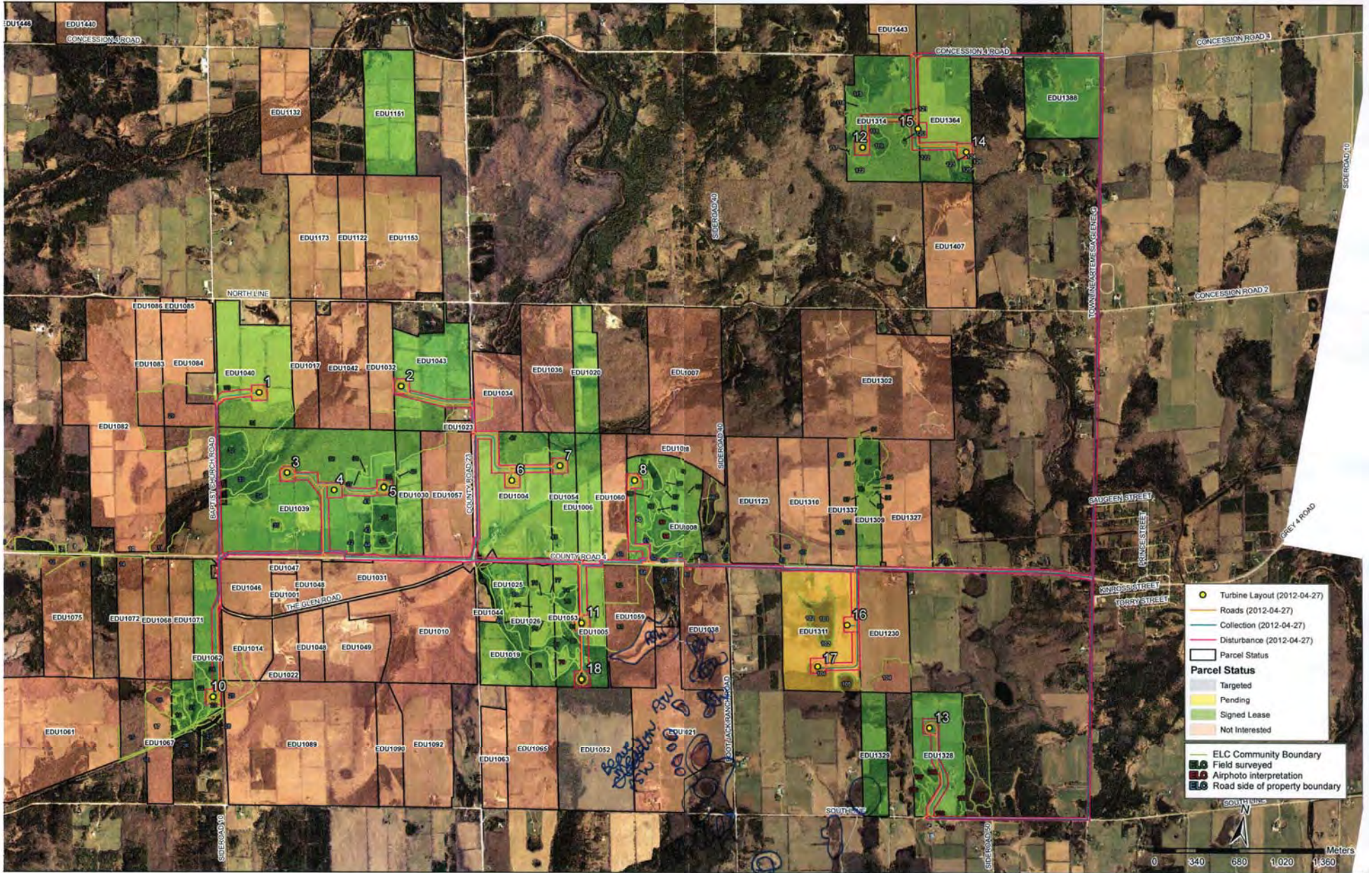




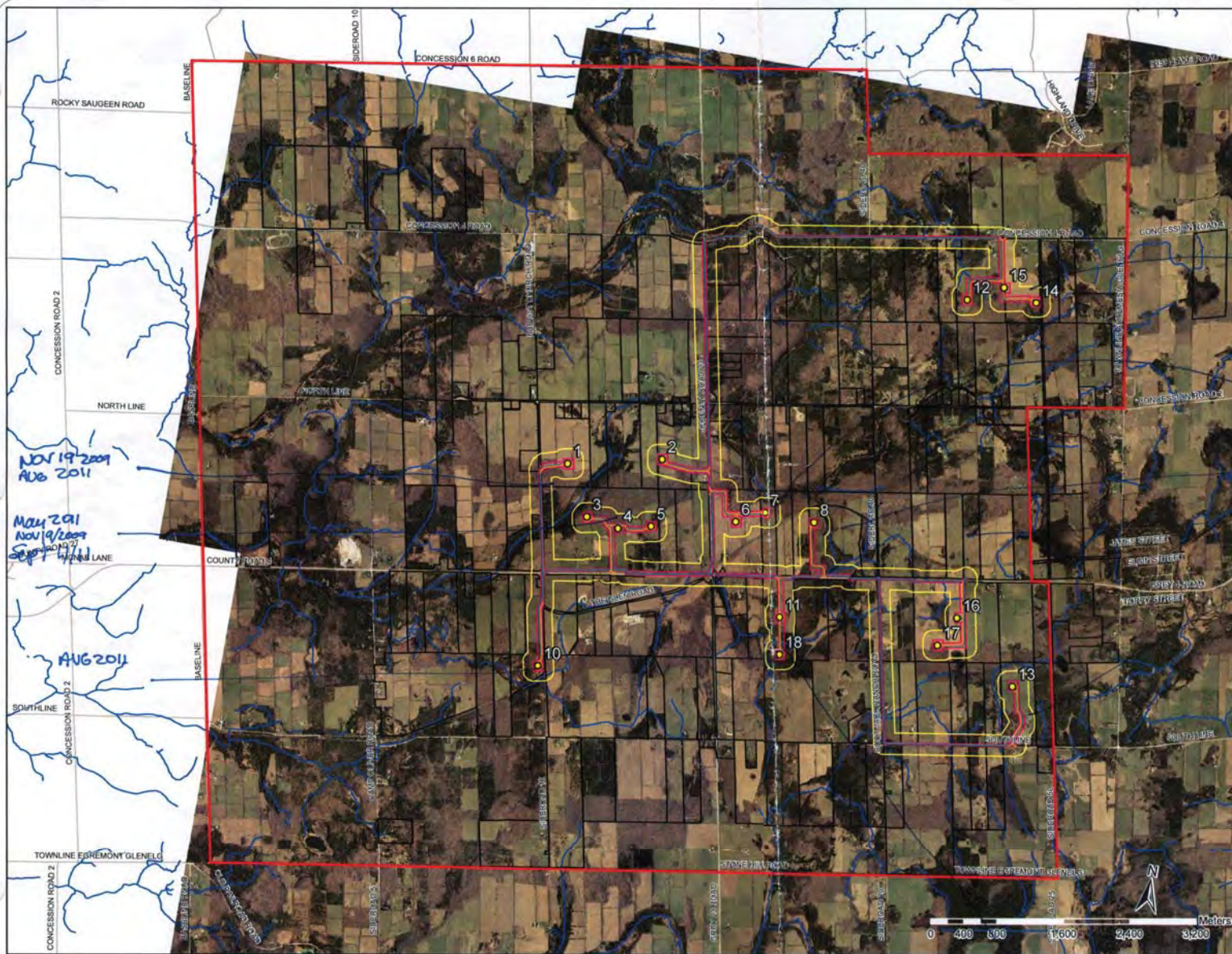












**LEGEND**

- Turbine Layout (2012-04-27)
- Roads (2012-05-02)
- Collection (2012-05-02)
- Construction Disturbance (2012-05-02)
- 120m Buffer around Project Components
- ▭ Project Boundary (Dec 2011)
- ▭ Parcel Boundary
- Watercourses

EJC  
MAY 15/12  
Feb 29/12

EJC  
MAY 24/12

APM 2011

EJC APR 2011 MAY 2012

EJC  
MAY 16/12  
Feb 29/12

NOV 19 2009  
AUG 2011

MAY 2011  
NOV 19 2009  
AUG 2011

AUG 2011

7/15/12 SW?

**East Durham Wind Farm  
2012-05-02 Layout**



Project	TA8119	Figure	
Date	May, 2012	Prepared By:	KC
Scale	1:45,000	Verified By:	



