

Figure 17

Bornish Wind Energy Centre Wildlife Habitat - T-Line



- Legend**
- Project Area (120m)
 - Project Location
 - Turbine
 - Access Road
 - Transmission Line
 - Collector System
 - Staging Area
 - Interconnection Facilities
 - Substation
 - Existing Transmission Line
 - Primary Road
 - Secondary Road
 - Railroad
 - Intermittent Watercourse
 - Permanent Watercourse
 - Waterbody
 - (AWO) Amphibian Breeding Habitat
 - (BMA) Bat Maternity Colony
 - (RWA) Raptor Wintering Area



Map Produced by Natural Resource Solutions Inc. This map is proprietary and confidential and must not be duplicated or distributed by any means without express written permission of NRSI. Source: Data provided by MNR. Copyright: Queen's Printer Ontario. Airphotos: SWOOP 2006

Project: 1231 Date: March 30, 2012	NAD83 - UTM Zone 17 Scale: 1:20,000 (11x17")
---------------------------------------	-------------------------------------------------

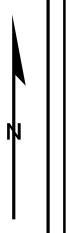
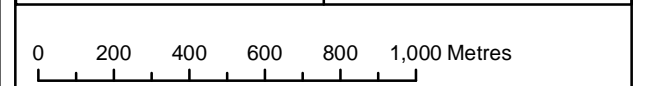


Figure 18

Bornish Wind Energy Centre Generalized Wildlife Habitat - Northwest



Legend

- Project Area (120m)
- Generalized Mitigation Habitat
- Project Location
- Turbine
- Access Road
- Transmission Line
- Collector System
- Staging Area
- Interconnection Facilities
- Substation
- Existing Transmission Line
- Primary Road
- Secondary Road
- Railroad
- Intermittent Watercourse
- Permanent Watercourse
- Waterbody



Map Produced by Natural Resource Solutions Inc. This map is proprietary and confidential and must not be duplicated or distributed by any means without express written permission of NRSI. Source: Data provided by MNR. Copyright: Queen's Printer Ontario. Airphotos: SWOOP 2006

Project: 1231 Date: March 7, 2012	NAD83 - UTM Zone 17 Scale: 1:20,000 (11x17")
--------------------------------------	-------------------------------------------------

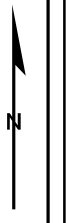
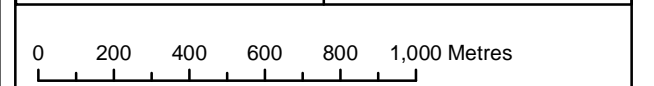


Figure 19

Bornish Wind Energy Centre Generalized Wildlife Habitat - Northeast



Legend

- Project Area (120m)
- Generalized Mitigation Habitat
- Project Location
- Turbine
- Access Road
- Transmission Line
- Collector System
- Staging Area
- Interconnection Facilities
- Substation
- Existing Transmission Line
- Primary Road
- Secondary Road
- Railroad
- Intermittent Watercourse
- Permanent Watercourse
- Waterbody



Map Produced by Natural Resource Solutions Inc. This map is proprietary and confidential and must not be duplicated or distributed by any means without express written permission of NRSI. Source: Data provided by MNR. Copyright: Queen's Printer Ontario. Airphotos: SWOOP 2006

Project: 1231 Date: March 7, 2012	NAD83 - UTM Zone 17 Scale: 1:20,000 (11x17")
--------------------------------------	-------------------------------------------------

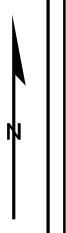
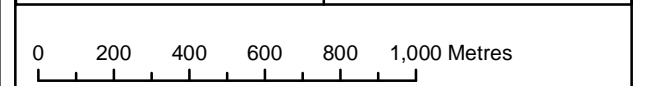
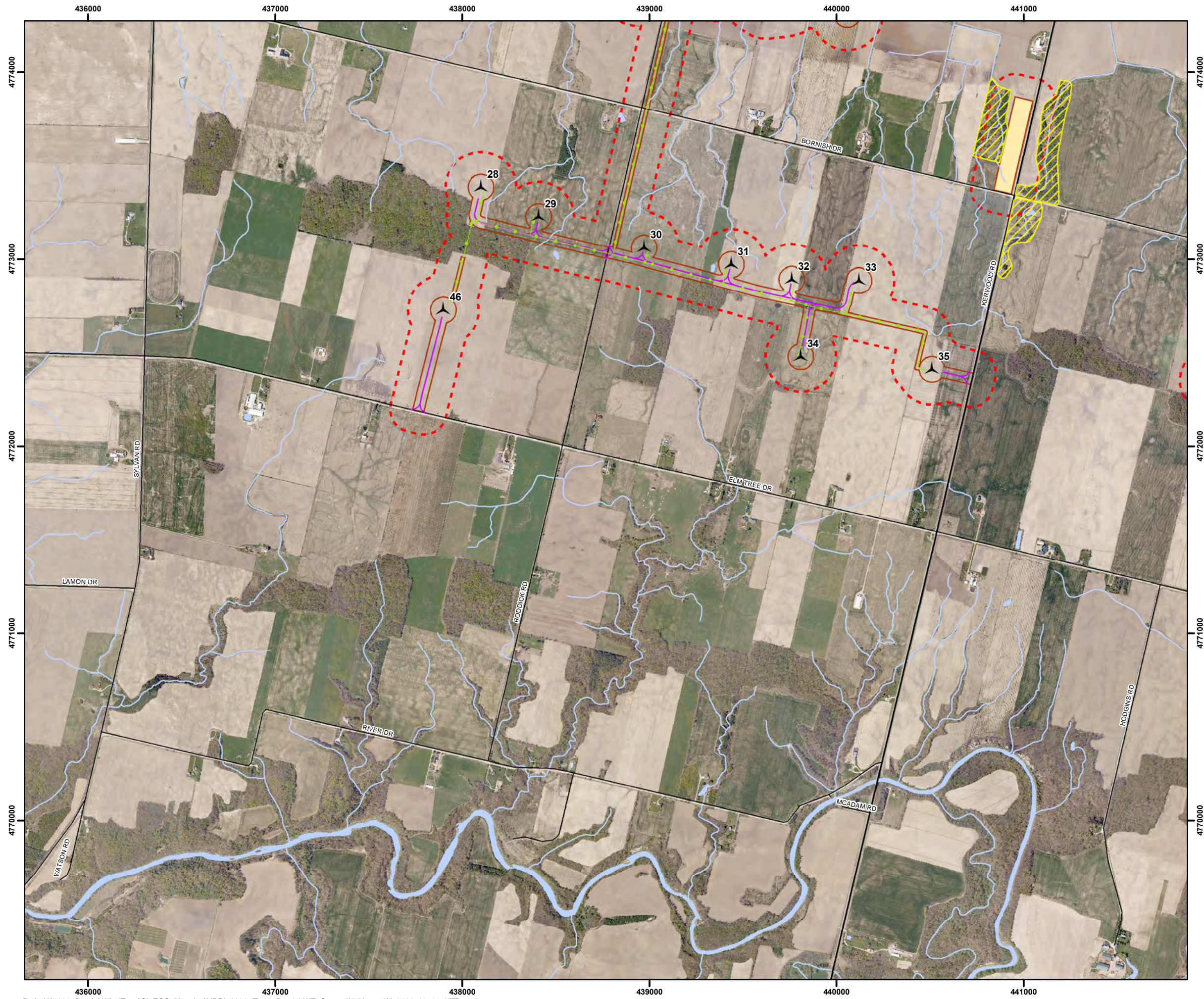


Figure 20

Bornish Wind Energy Centre Generalized Wildlife Habitat - Southwest



Legend

- Project Area (120m)
- Generalized Mitigation Habitat
- Project Location
- Turbine
- Access Road
- Transmission Line
- Collector System
- Staging Area
- Interconnection Facilities
- Substation
- Existing Transmission Line
- Primary Road
- Secondary Road
- Railroad
- Intermittent Watercourse
- Permanent Watercourse
- Waterbody



Map Produced by Natural Resource Solutions Inc. This map is proprietary and confidential and must not be duplicated or distributed by any means without express written permission of NRSI. Source: Data provided by MNR. Copyright: Queen's Printer Ontario. Airphotos: SWOOP 2006

Project: 1231 Date: March 7, 2012	NAD83 - UTM Zone 17 Scale: 1:20,000 (11x17")
--------------------------------------	-------------------------------------------------

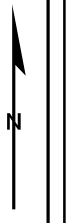
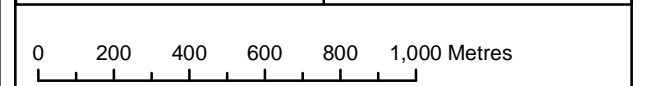














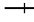


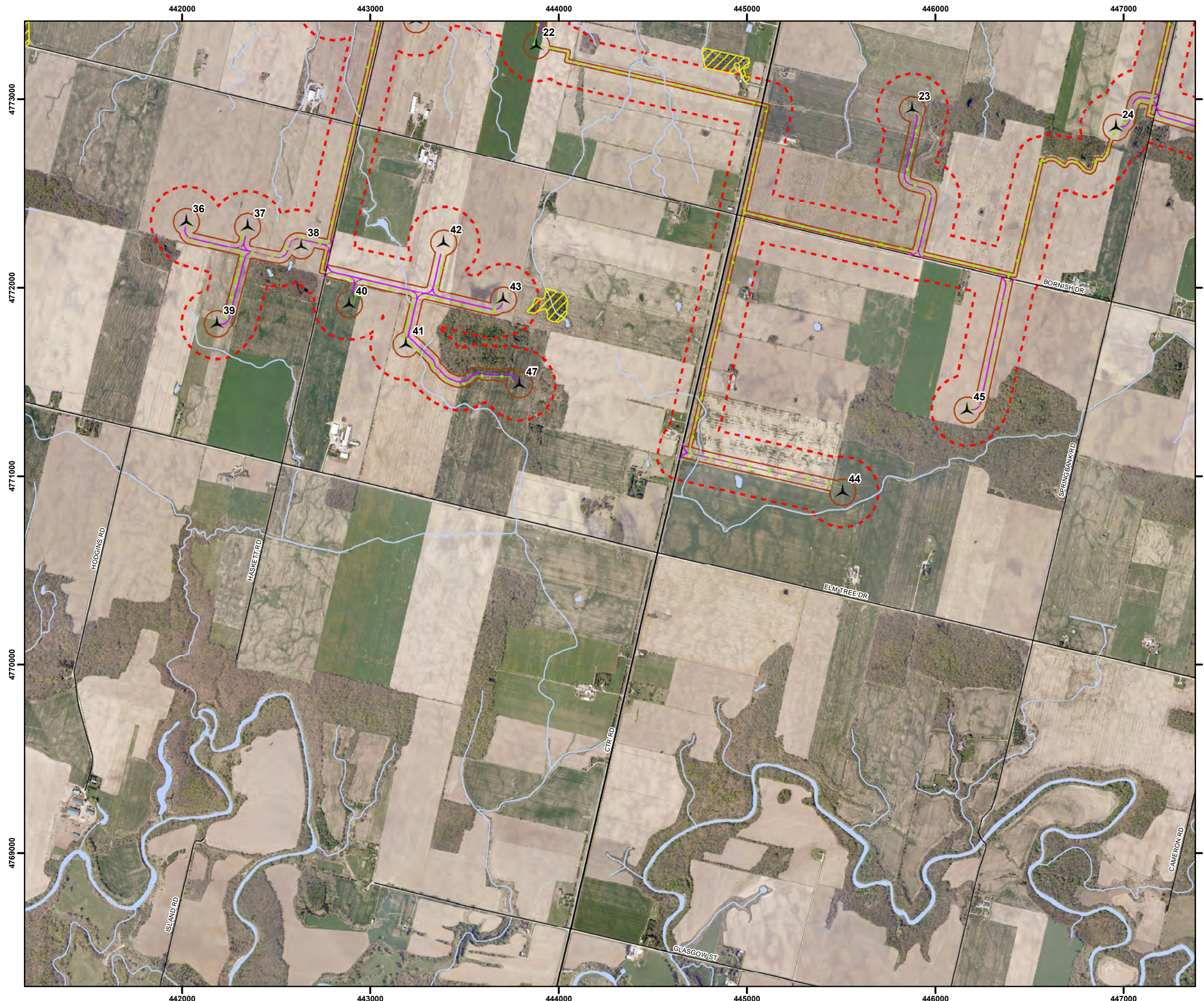


Figure 21

Bornish Wind Energy Centre Generalized Wildlife Habitat - Southeast

Legend

-  Project Area (120m)
-  Generalized Mitigation Habitat
-  Project Location
-  Turbine
-  Access Road
-  Transmission Line
-  Collector System
-  Staging Area
-  Interconnection Facilities
-  Substation
-  Existing Transmission Line
-  Primary Road
-  Secondary Road
-  Railroad
-  Intermittent Watercourse
-  Permanent Watercourse
-  Waterbody



Map Produced by Natural Resource Solutions Inc. This map is proprietary and confidential and must not be duplicated or distributed by any means without express written permission of NRSI. Source: Data provided by MNR. Copyright: Queen's Printer Ontario. Airphotos: SWOOP 2006

Project: 1231 Date: March 7, 2012	NAD83 - UTM Zone 17 Scale: 1:20,000 (11x17")
