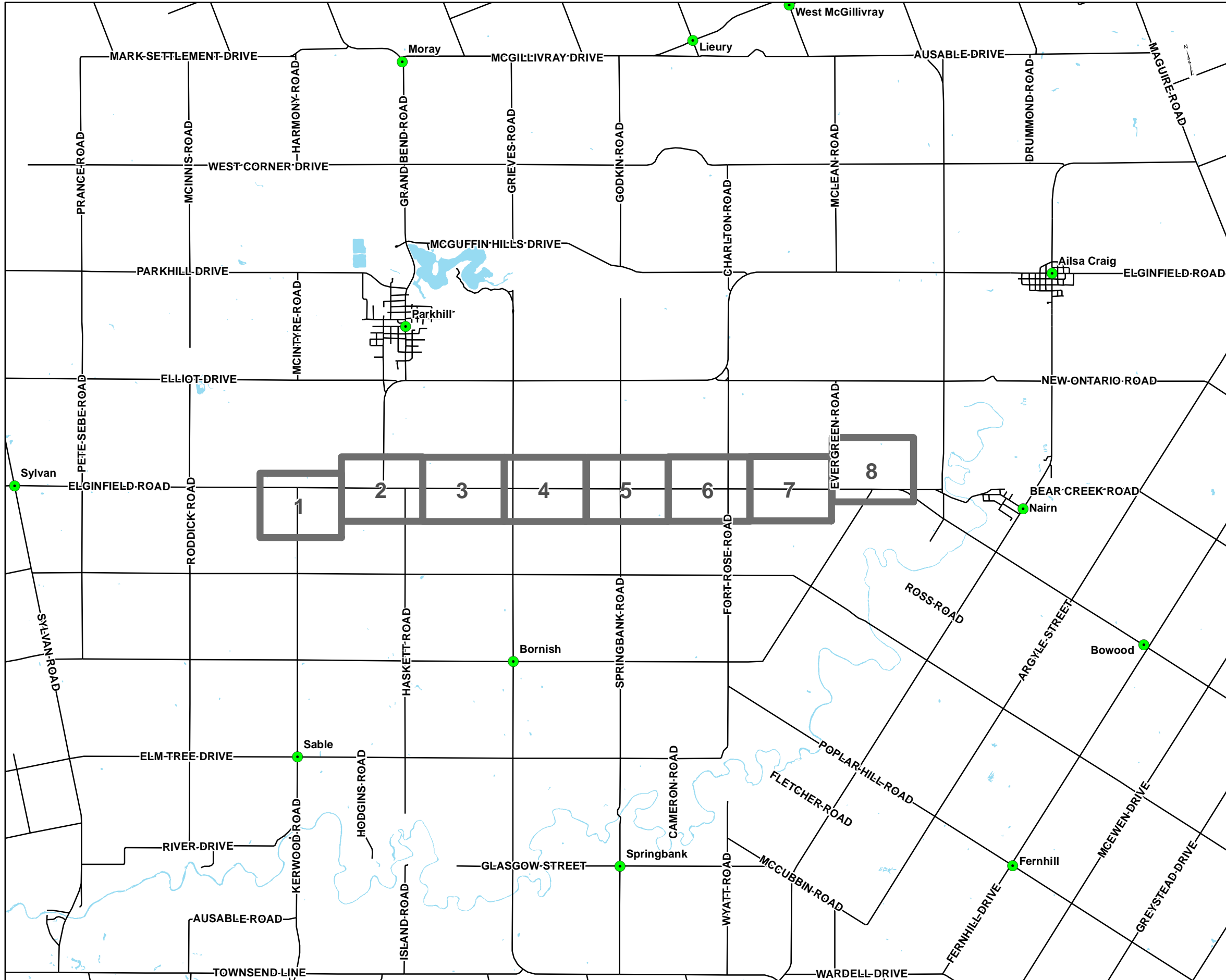




STAGES 1 AND 2 ARCHAEOLOGICAL ASSESSMENT, PARKHILL POI, MIDDLESEX COUNTY, ONTARIO

Figure 5: Stage 2 Survey Methods and Results for the Parkhill POI (see Supplementary Document A)

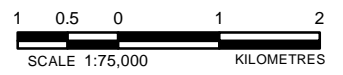


LEGEND

- Roads
- Waterbody

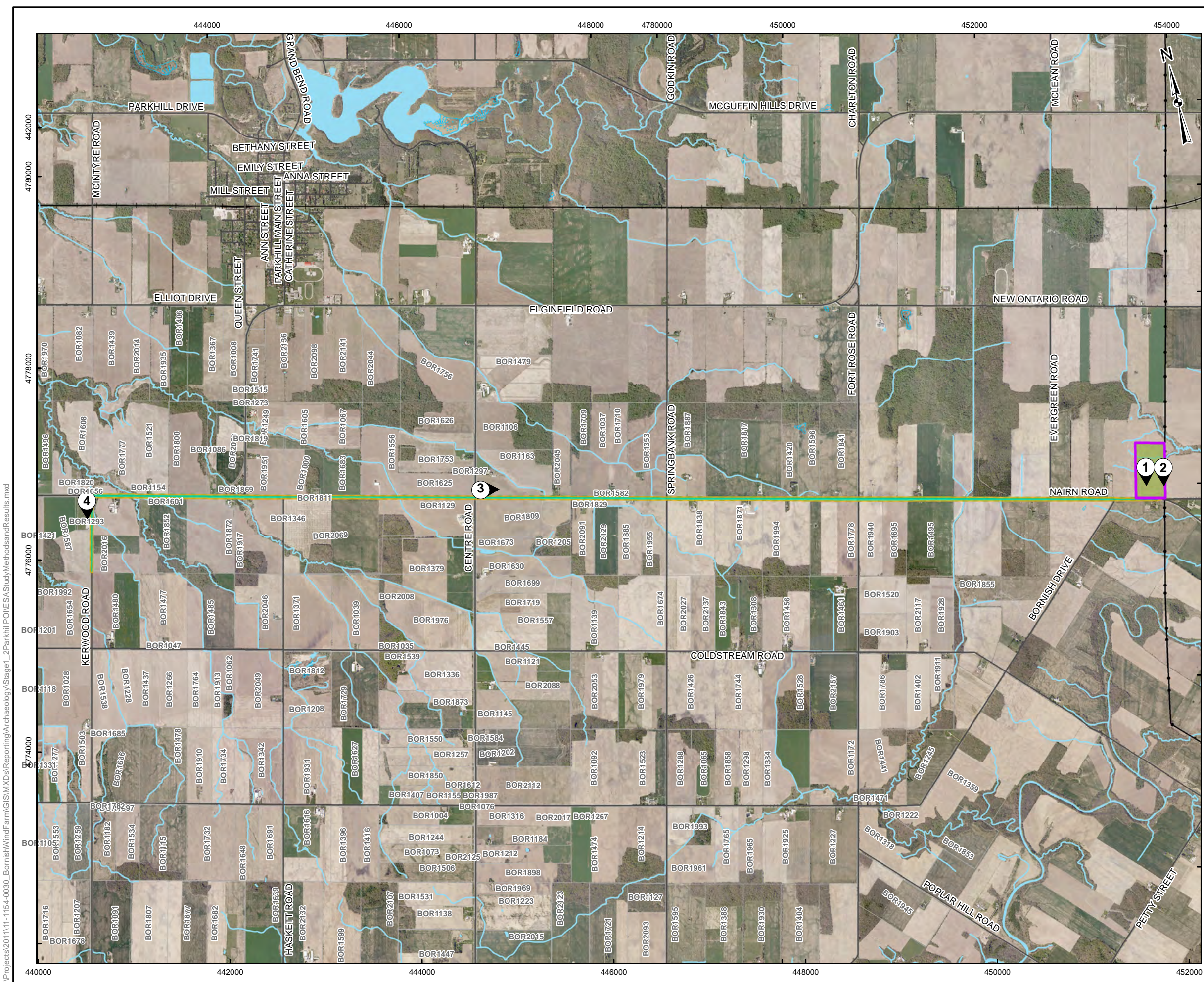
REFERENCE

Base Data - MNR NRVIS, obtained 2004
 Produced by Golder Associates Ltd under licence from
 Ontario Ministry of Natural Resources, © Queens Printer 2008
 Projection: Transverse Mercator Datum: NAD 83 Coordinate System: UTM Zone 17N



PROJECT STAGE 1-2 ARCHAEOLOGICAL ASSESSMENT			
PARKHILL POINT OF INTERCONNECT			
MIDDLESEX COUNTY, ONTARIO			
TITLE			
KEY PLAN			
 Mississauga, Ontario	PROJECT NO.	11-1154-0030	SCALE AS SHOWN
	DESIGN	JMC	6 Feb. 2012
	CHECK	JM	5 Apr. 2012
	REVIEW	JM	5 Apr. 2012
			REV. 0.0
			FIGURE: 6-A

G:\Projects\2011\11-1154-0030_BornishWindFarm\GIS\MXDs\Reporting\Archaeology\Stage1_2ParkhillPOI\KeyPlan.mxd

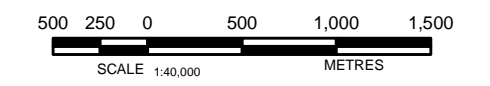


LEGEND

- 1 Photographic Direction
- Roads
- Railways
- Utility Line
- Watercourse
- Proposed Point of Interconnection Study Area
- Transmission Line ROW
- Stage 2 Pedestrian Survey at 5m Intervals
- Disturbed Area - Not Assessed
- Waterbody
- Wetland
- Land Parcel

REFERENCE

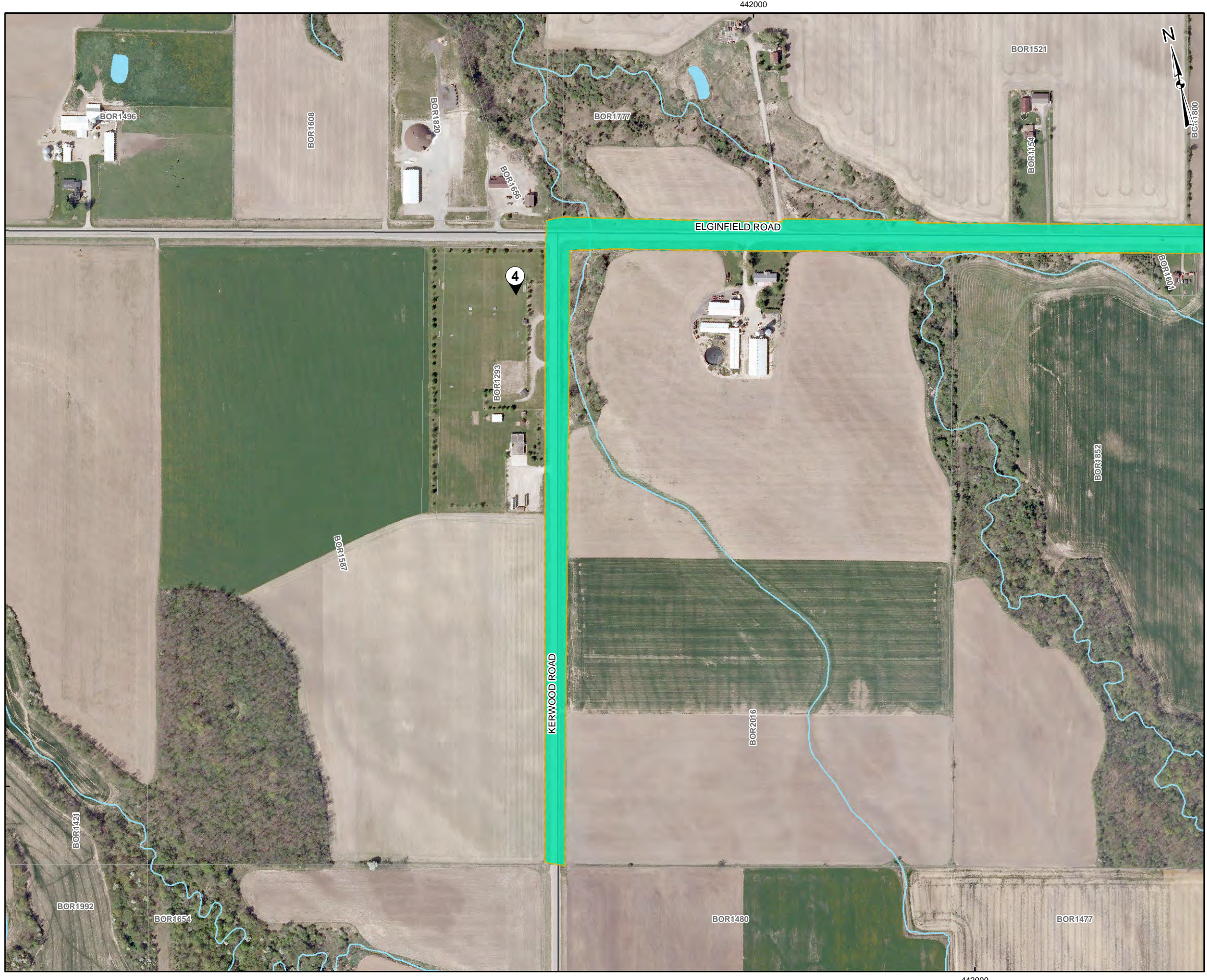
Base Data - MNR LIO, obtained 2009
 Produced by Golder Associates Ltd under licence from
 Ontario Ministry of Natural Resources, © Queens Printer 2012
 Projection: Transverse Mercator Datum: NAD 83 Coordinate System: UTM Zone 17



PROJECT STAGE 1-2 ARCHAEOLOGICAL ASSESSMENT, PARKHILL POINT OF INTERCONNECT, MIDDLESEX COUNTY, ONTARIO			
TITLE STAGE 2 SURVEY METHODS OVERVIEW			
	PROJECT NO.	11-1154-0030	SCALE AS SHOWN
	DESIGN	JMC	1 Feb. 2012
	GIS	BC	5 Apr. 2012
	CHECK	SM	5 Apr. 2012
REVIEW	JM	5 Apr. 2012	REV. 0.0
			FIGURE: 6-B

G:\Projects\2011\11-1154-0030_BornishWindFarm\GIS\MapDocs\Reporting\Archaeology\Stage1_2\ParkhillPOI\ESAS\StudyMethods\Results.mxd

G:\Projects\2011\11-1154-0030_BornishWindFarm\GIS\MapXDocs\Reporting\Archaeology\Stage1_2\ParkhillPOI\ESAS\StudyMethods_01.mxd



LEGEND

- Photographic Direction
- Roads
- Railways
- Utility Line
- Watercourse
- Proposed Point of Interconnection Study Area
- Transmission Line ROW
- Scatter Size Area
- Stage 2 Pedestrian Survey at 5m Intervals
- Disturbed Area - Not Assessed
- Waterbody
- Wetland
- Land Parcel

REFERENCE

Base Data - MNR LIO, obtained 2009
 Produced by Golder Associates Ltd under licence from
 Ontario Ministry of Natural Resources, © Queens Printer 2012
 Projection: Transverse Mercator Datum: NAD 83 Coordinate System: UTM Zone 17

PROJECT STAGE 1-2 ARCHAEOLOGICAL ASSESSMENT, PARKHILL POINT OF INTERCONNECT, MIDDLESEX COUNTY, ONTARIO			
TITLE STAGE 2 SURVEY METHODS			
 Mississauga, Ontario	PROJECT NO.	11-1154-0030	SCALE AS SHOWN
	DESIGN	JMC 1 Feb. 2012	REV. 0.0
	GIS	JMC 2 Feb. 2012	
	CHECK	SM 2 Feb. 2012	
	REVIEW	JM 2 Feb. 2012	

FIGURE: 6-01

