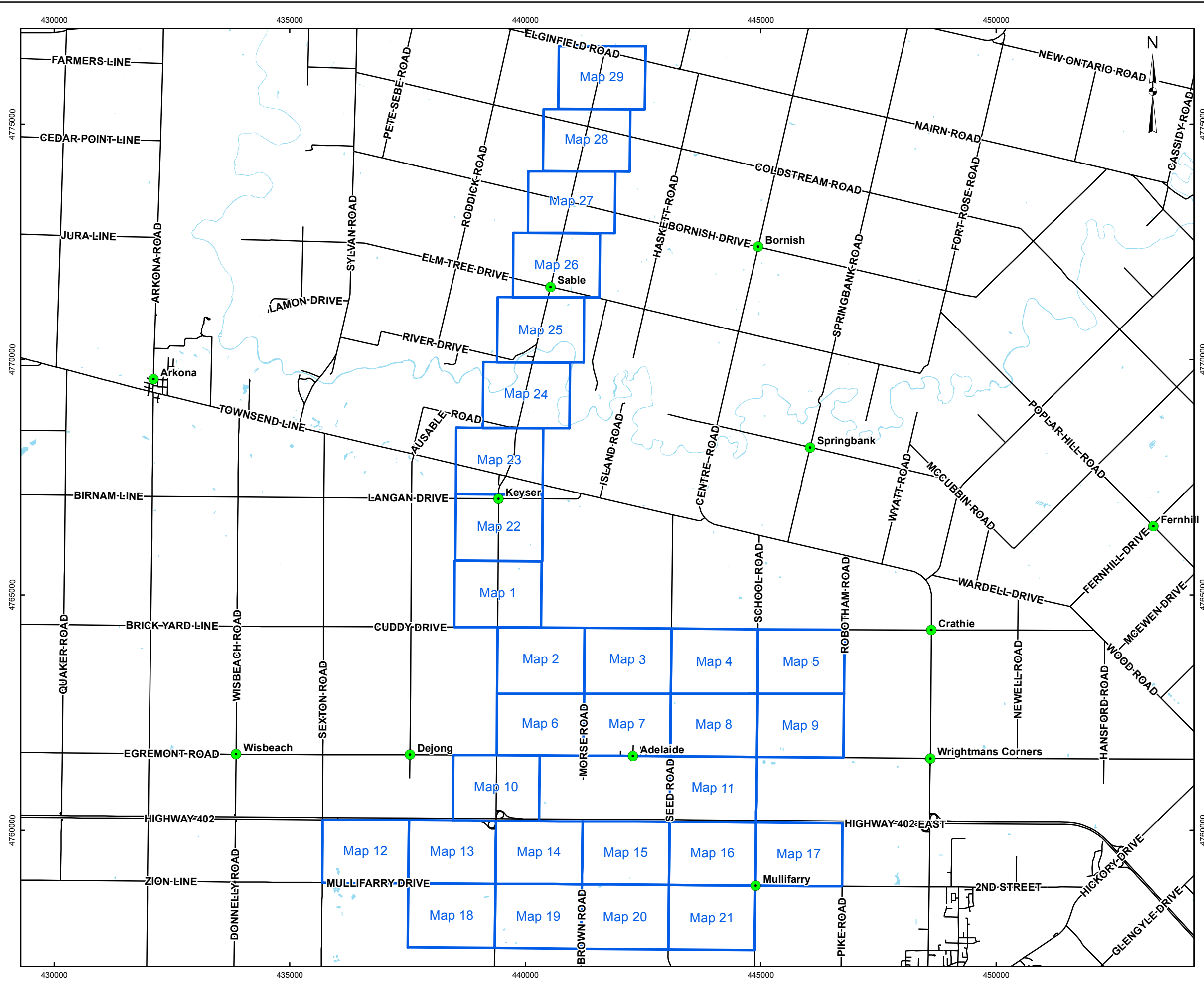


G:\Projects\201111-1154-0021_NextEra_Adelaide\GIS\WXDs\Reporting\Archaeology\Stage2\ArchaeologicalAssessment\July2012\KeyPlan.mxd



LEGEND

- Place
- Roads
- Waterbody

REFERENCE

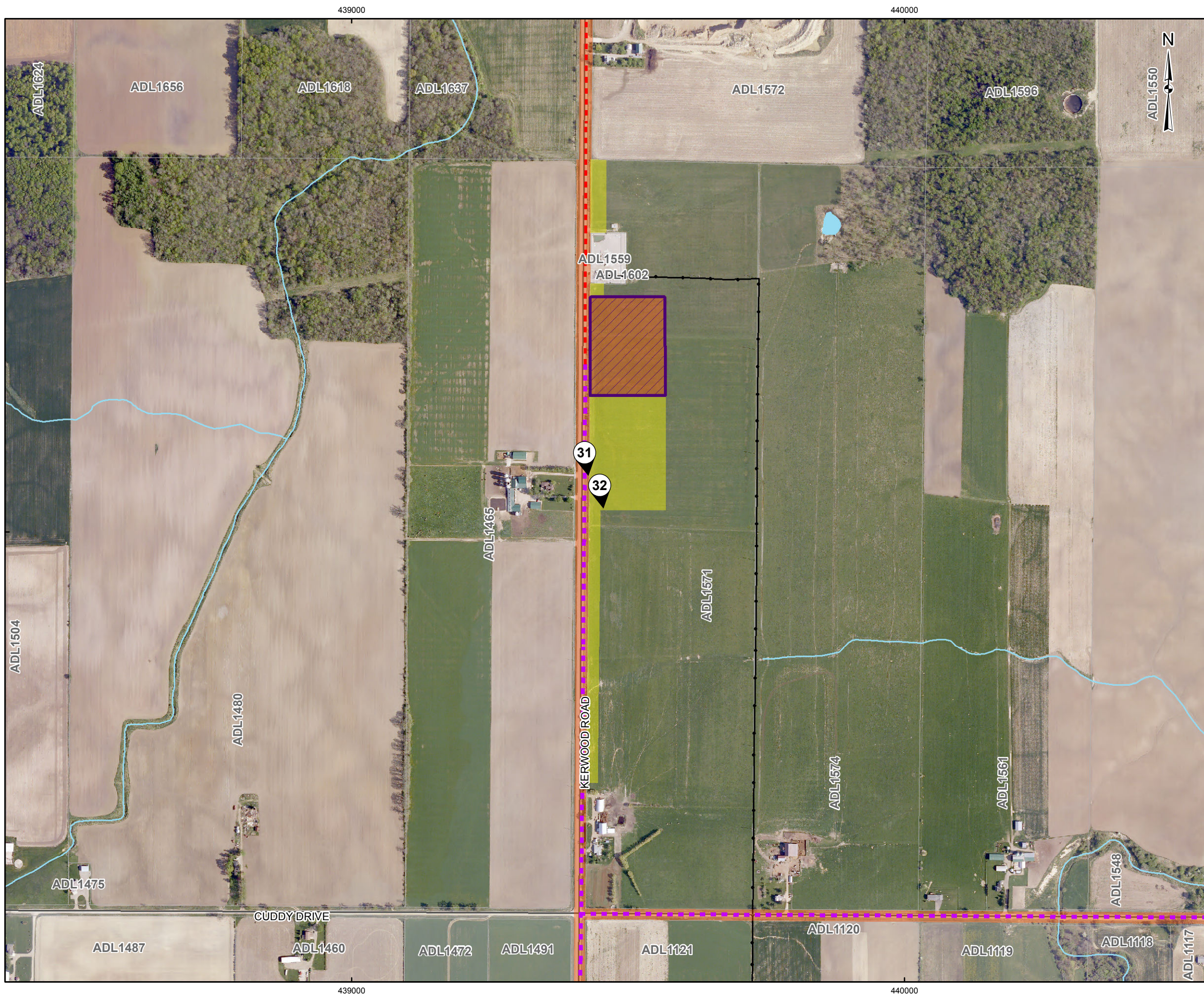
Base Data - MNR NRVIS, obtained 2004
 Produced by Golder Associates Ltd under licence from
 Ontario Ministry of Natural Resources, © Queens Printer 2008
 Projection: Transverse Mercator Datum: NAD 83 Coordinate System: UTM Zone 17N

SCALE 1:80,000 KILOMETRES

PROJECT STAGE 2 ARCHAEOLOGICAL ASSESSMENT				
ADELAIDE WIND ENERGY CENTRE				
MIDDLESEX COUNTY, ONTARIO				
TITLE				
KEY PLAN				
<p>Golder Associates Mississauga, Ontario</p>	PROJECT NO.	11-1154-0021	SCALE AS SHOWN	REV. 0.0
	DESIGN	JMC	6 Feb. 2012	
	CHECK	JM	16 Jul. 2012	
	REVIEW	JM	16 Jul. 2012	

FIGURE 5-A

G:\Projects\2011\11-1154-0021_NextEra_Adelaide\GIS\MapXDs\Reporting\Archaeology\Stage2SurveyMethodsJuly2012\Fig - 5-01 STAGE 2 SURVEY METHODS.mxd



LEGEND

- 1 Photographic Direction
- Turbine Layout
- MET Tower
- Collector Cable
- Access Road
- Proposed Transmission Line
- Roads
- Utility Line
- Watercourse
- Stage 2 Pedestrian Survey at 5m Intervals
- Stage 2 Test Pit Survey at 5m Intervals
- Steep Slope - Not Assessed
- Previous Stage 2 Archaeological Assessment (reported under P001-452-2008, P001-526-2009, P084-197-2009, P218-096-2011, and P319-015-2012)
- Disturbed Area - Not Assessed
- Land Parcel
- Substation
- Waterbody
- Wetland

REFERENCE

Base Data - MNR NRVIS, obtained 2004, CANMAP v2006.4
 Produced by Golder Associates Ltd under licence from
 Ontario Ministry of Natural Resources, © Queens Printer 2008
 Projection: Transverse Mercator Datum: NAD 83 Coordinate System: UTM Zone 17N



PROJECT ADDITIONAL STAGE 2 ARCHAEOLOGICAL ASSESSMENT, ADELAIDE WIND ENERGY CENTRE MIDDLESEX COUNTY, ONTARIO

TITLE **STAGE 2 SURVEY METHODS**

	PROJECT NO.	11-1154-0021	SCALE AS SHOWN	REV. 0.0
	DESIGN	JMC 2 Feb. 2012		
	CHECK	SM 20 Jul. 2012		
	REVIEW	JM 20 Jul. 2012		

FIGURE: 5-01