



Plate 78: Location 33, Pre-contact Aboriginal Artifact, actual size



1: Biface
Location 33, cat. # 1

Plate 79: Location 34, Pre-contact Aboriginal Artifact, actual size



1: Utilized Flake
Location 34, cat. # 1

Plate 80: Location 35, Pre-contact Aboriginal Artifact, actual size



1: Perforator
Location 35, cat. # 1



Plate 81: Location 36 (AgHk-133), Pre-contact Aboriginal Artifact, actual size



1: Projectile Point
Location 36, cat. # 1

Plate 82: Location 37, Pre-contact Aboriginal Artifact, actual size



1: Chipping Detritus
Location 37, cat. # 1

Plate 83: Location 38 (AgHj-18), Pre-contact Aboriginal Artifact, actual size



1: Graver
Location 38, cat. # 1



Plate 84: Location 39 (AfHk-36), Pre-contact Aboriginal Artifact, actual size



1: Projectile Point
Location 39, cat. # 1

Plate 85: Location 40, Pre-contact Aboriginal Artifacts, actual size



1: Chipping Detritus
Location 40, cat. # 1



2: Retouched Flake
Location 40, cat. # 2

Plate 86: Location 41, Pre-contact Aboriginal Artifact, actual size



1: Groundstone Celt
Location 41, cat. # 1



STAGE 2 ARCHAEOLOGICAL ASSESSMENT NEXTERA ENERGY CANADA, ULC

Plate 87: Location 42 (AgHk-134), Historic Euro-Canadian Artifacts, actual size



1. Painted Whiteware
Location 42, cat. # 8



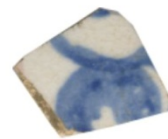
2. Painted Whiteware
Location 42, cat. # 7



3. Painted Whiteware
Location 42, cat. # 28



4. Sponged Whiteware
Location 42, cat. # 2



5. Stamped Whiteware
Location 42, cat. # 19

Plate 88: Location 42 (AgHk-134), Historic Euro-Canadian Artifacts, actual size



1. Pearlware
Location 14, cat. # 14



2. Edged Pearlware
Location 42, cat. # 20

Plate 89: Location 42 (AgHk-134), Historic Euro-Canadian Domestic Glass Artifact, actual size



1. Bottle Glass
Location 42, cat. # 5



**STAGE 2 ARCHAEOLOGICAL ASSESSMENT
NEXTERA ENERGY CANADA, ULC**

Plate 90: Location 42 (AgHk-134), Historic Euro-Canadian Artifacts, actual size



1. White Clay Pipe Bowl
Location 42, cat. # 18



2. Agate Button
Location 42, cat. # 13

Plate 91: Location 42 (AgHk-134), Historic Euro-Canadian Artifact, actual size



1. Cut Nail
Location 42, cat. # 32

Plate 92: Location 43 (AgHk-135), Pre-contact Aboriginal Artifacts, actual size



1. Biface
Location 43, Cat. # 1



2. Retouched Flake
Location 43, Cat. # 2



3. Retouched Flake
Location 43, Cat. # 3



Plate 93: Location 43 (AgHk-135), Pre-contact Aboriginal Artifacts, actual size

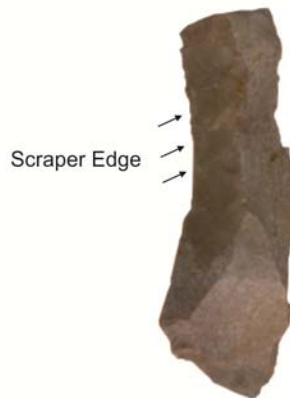


1. Chipping Detritus
Location 43, Cat. #s 4, 5, 6 and 7

Plate 94: Location 44 (AgHk-136), Pre-contact Aboriginal Artifacts, actual size



1. Projectile Point
Location 44, Cat. # 1



2. Scraper
Location 44, Cat. # 2



3. Utilized Flake
Location 44, Cat. # 4



4. Chipping Detritus
Location 44, Cat. #s 3, 5, 6 and 7



**STAGE 2 ARCHAEOLOGICAL ASSESSMENT
NEXTERA ENERGY CANADA, ULC**

Plate 95: Location 45 (AgHk-137), Pre-contact Aboriginal Artifacts, actual size



1. Chipping Detritus
Location 45, Cat. #s 1, 2, 3 and 4

Plate 96: Location 46, Pre-contact Aboriginal Artifact, actual size



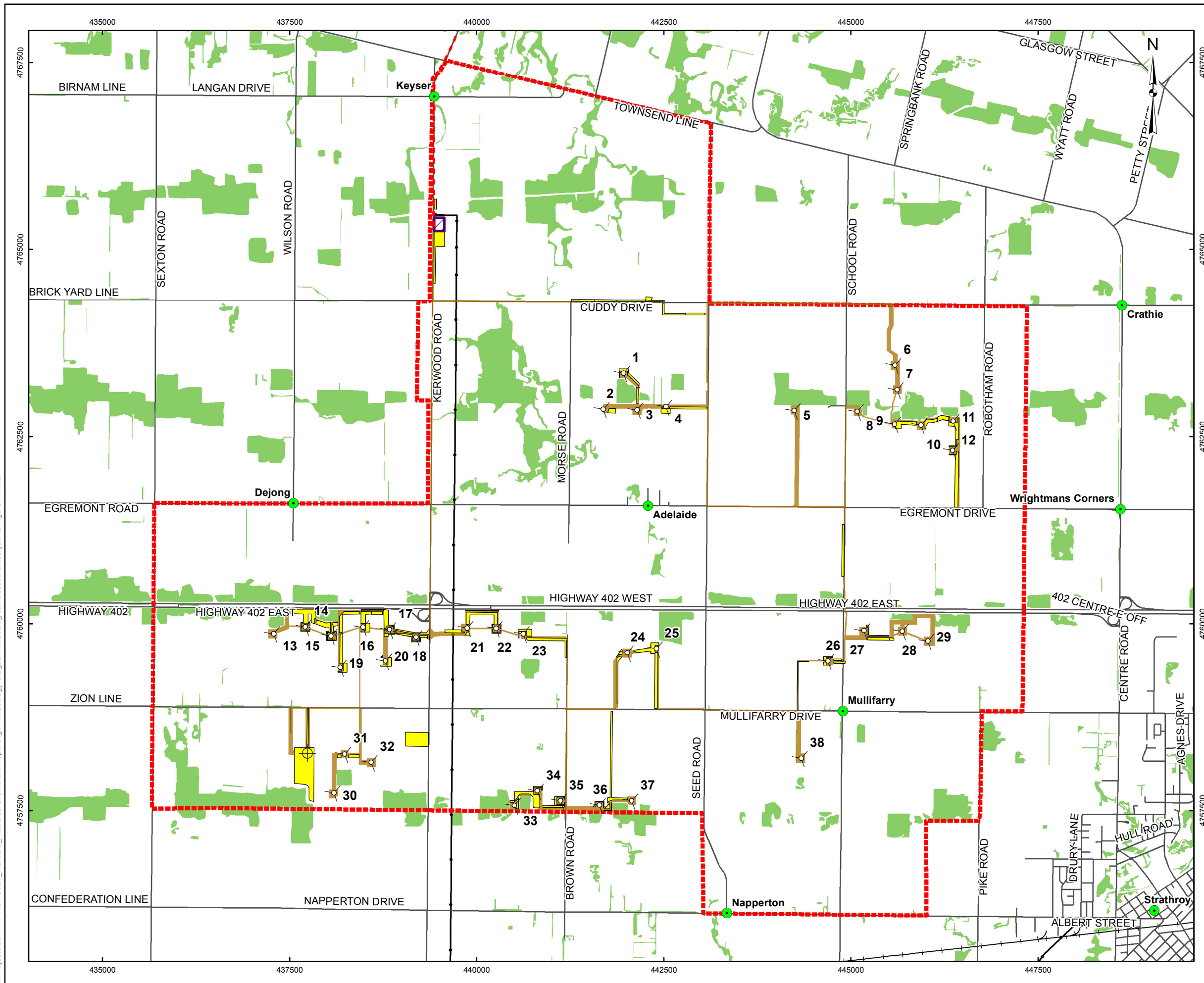
1: Chipping Detritus
Location 46, cat. # 1



9.0 MAPS

Figures follow on the succeeding pages.

G:\Projects\2011\11-1154-0021_NextEra_Adelaide\GIS\MapDocs\Reporting\Archaeology\Stage2\ArchaeologicalAssessment\July2012\Figure1A.mxd

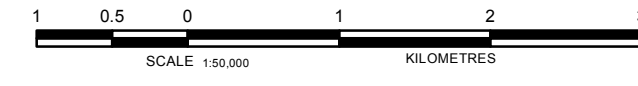


LEGEND

- Place
- Turbine Layout
- MET Tower
- Roads
- Utility Line
- Railways
- Watercourse
- Waterbody
- Wetland
- Wooded Areas
- Substation
- Study Area
- Stage 2 Archaeological Assessment in This Report
- Project Disturbance Area

REFERENCE

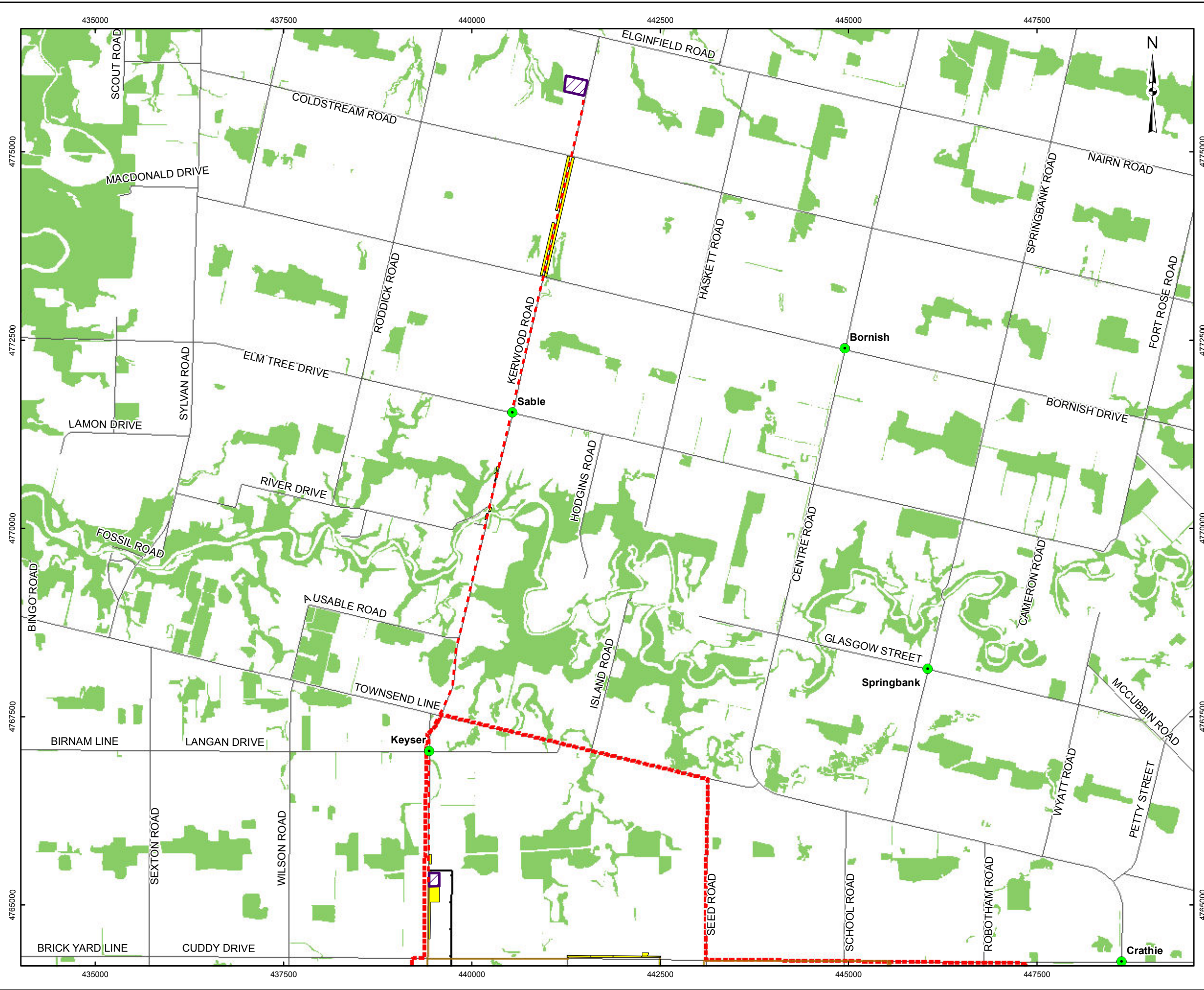
Base Data - MNR NRVIS, obtained 2004
 Produced by Golder Associates Ltd under licence from
 Ontario Ministry of Natural Resources, © Queens Printer 2008
 Projection: Transverse Mercator Datum: NAD 83 Coordinate System: UTM Zone 17N



PROJECT ADDITIONAL STAGE 2 ARCHAEOLOGICAL ASSESSMENT ADELAIDE WIND ENERGY CENTRE MIDDLESEX COUNTY, ONTARIO			
TITLE LOCATION OF STUDY AREA: WIND FARM			
<p>Golder Associates Mississauga, Ontario</p>	PROJECT NO. 11-1154-0021	SCALE AS SHOWN	REV. 0.0
	DESIGN JMC 6 Feb. 2012		
	CHECK SM 20 Jul. 2012		
	REVIEW JM 20 Jul. 2012		

FIGURE: 1A

G:\Projects\2011\11-1154-0021_NextEra_Adelaide\GIS\MXDs\Reporting\Archaeology\Stage2\ArchaeologicalAssessment\July2012\Figure1B.mxd

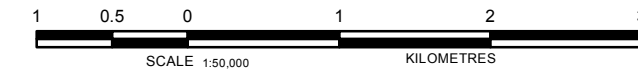


LEGEND

- Place
- Turbine Layout
- MET Tower
- Roads
- Utility Line
- Railways
- Watercourse
- Waterbody
- Wetland
- Wooded Areas
- Substation
- Study Area
- Stage 2 Archaeological Assessment in This Report
- Project Disturbance Area

REFERENCE

Base Data - MNR NRVIS, obtained 2004
 Produced by Golder Associates Ltd under licence from
 Ontario Ministry of Natural Resources, © Queens Printer 2008
 Projection: Transverse Mercator Datum: NAD 83 Coordinate System: UTM Zone 17N



PROJECT				ADDITIONAL STAGE 2 ARCHAEOLOGICAL ASSESSMENT ADELAIDE WIND ENERGY CENTRE MIDDLESEX COUNTY, ONTARIO			
TITLE				LOCATION OF STUDY AREA TRANSMISSION LINE			
PROJECT NO. 11-1154-0021		SCALE AS SHOWN		REV. 0.0			
DESIGN	JMC	6 Feb. 2012					
GIS	BC	20 Jul. 2012					
CHECK	SM	20 Jul. 2012					
REVIEW	JM	20 Jul. 2012					

FIGURE: 1B

