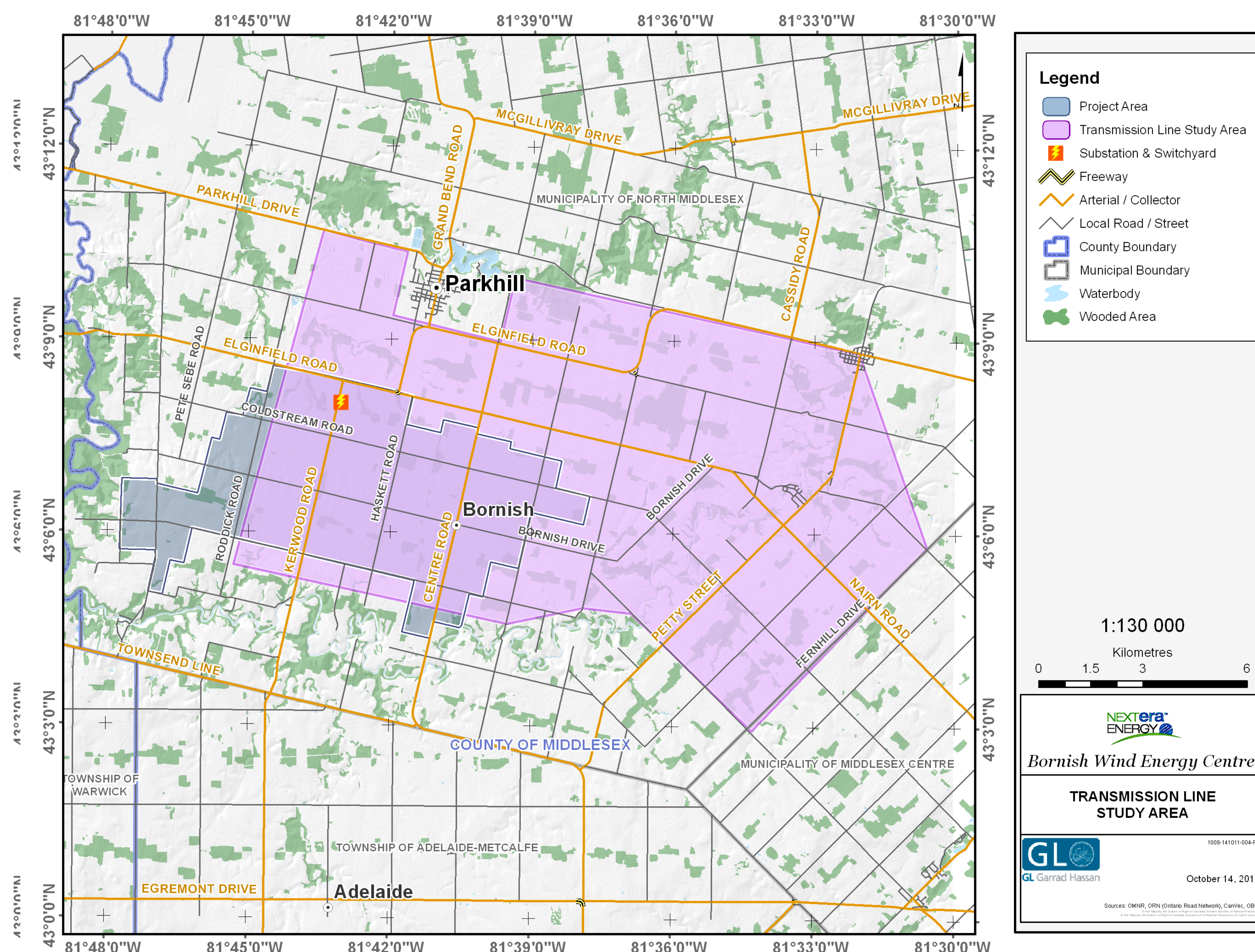


# Wind Energy Centres - Open House

## The Bornish Project

- The proposed Bornish Wind Energy Centre is planned to be located in the Municipality of North Middlesex, Middlesex County, Ontario
- Project components will be installed on privately-owned agricultural lots
- The project will have a maximum name plate capacity of 73-megawatts of electricity which will generate enough energy to power approximately 21,870 homes
- Project infrastructure will include:
  - ✦ 45 1.62-megawatt GE turbines
  - ✦ Laydown and storage areas (including temporary staging areas) for construction equipment and supplies
  - ✦ A substation located on site and a 115 kV transmission line to connect to the Hydro One transmission system
  - ✦ The proposed transmission line will travel east along Elginfield and Nairn Roads, connecting to the Hydro One transmission system
  - ✦ Underground electrical collection lines (located on private lands) to connect the turbines to the transformer substation
  - ✦ Turbine access roads construction and maintenance
  - ✦ Permanent meteorological towers (height 80-100m) to measure wind speeds, wind direction, temperature and humidity
  - ✦ An operations and maintenance building





# Wind Energy Centres - Open House

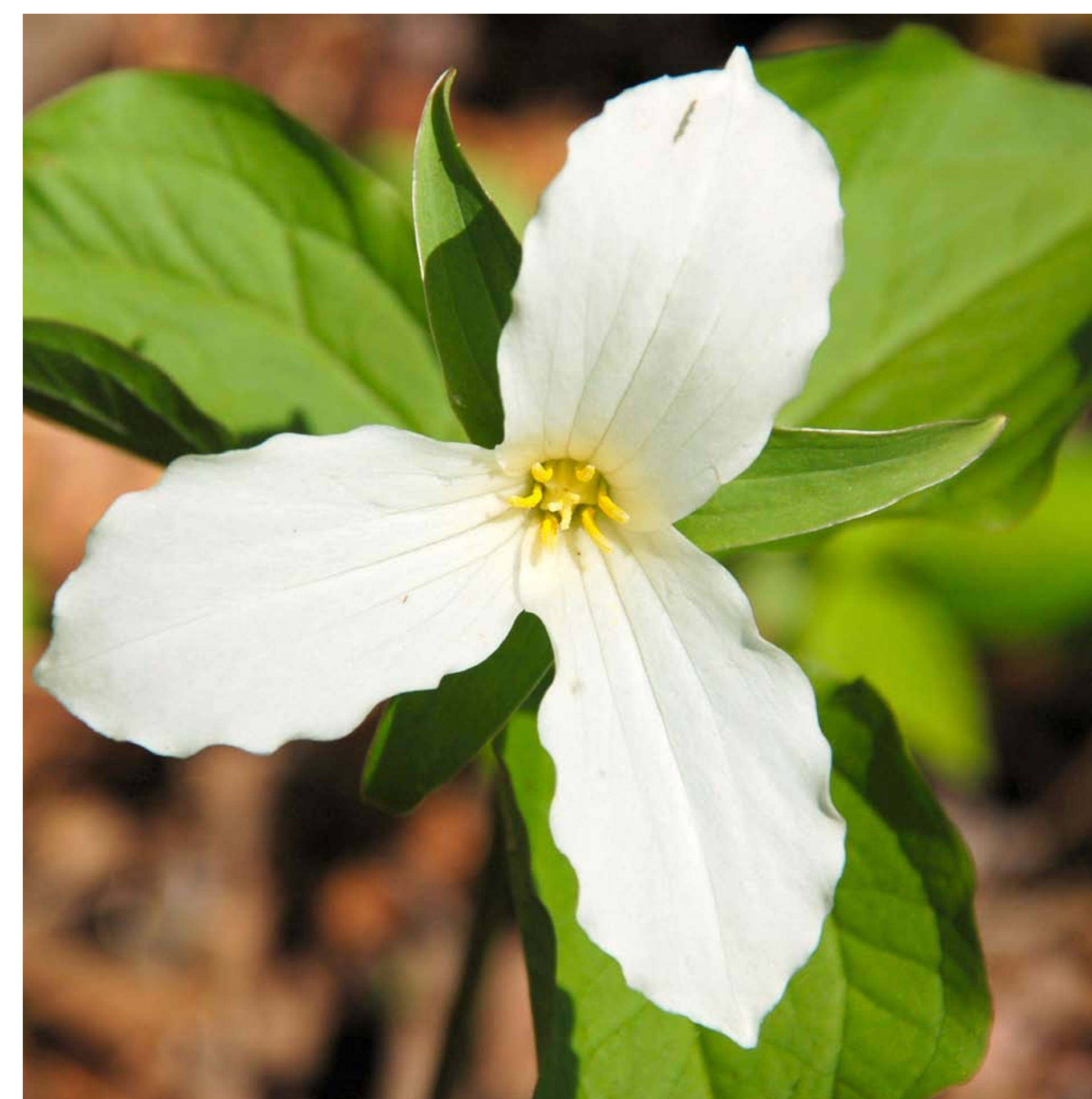
## Renewable Energy in Ontario

### **The Green Energy and Green Economy Act**

- Developed to stimulate the “green” economy in Ontario and create up to 50,000 jobs

### Key Components:

- A provincial obligation to purchase green energy
- Priority grid access for renewable energy projects
- Long-term fixed-price power contracts
- Streamlined regulatory and approvals process



## Provincial Green Energy Initiatives and the Feed-in-Tariff Program:

- Feed-in-Tariff (FIT) Program, launched by the Ontario Power Authority, is North America’s first comprehensive guaranteed pricing structure for renewable electricity production
- The FIT Program offers stable prices and long-term contracts to green energy projects that encourage investment in renewable energy and economic development across the Province
- NextEra Energy Canada had six projects that were awarded FIT contracts on July 4, 2011:

- ✦ Adelaide Wind Energy Centre
- ✦ Bluewater Wind Energy Centre
- ✦ Bornish Wind Energy Centre
- ✦ East Durham Wind Energy Centre
- ✦ Goshen Wind Energy Centre
- ✦ Jericho Wind Energy Centre

We have two additional projects which have been awarded a FIT contract by the Ontario Power Authority and have filed their respective Renewable Energy Approval application. Both are awaiting a decision.



## Ontario's Renewable Energy Approval Process

- The Renewable Energy Approval (REA) process, outlined in Ontario Regulation 359/09, is required for larger wind power projects under Ontario's Green Energy Act
- NextEra Energy Canada will submit a Renewable Energy Approval application to the Ontario Ministry of the Environment (MOE) for each project
- The MOE will assess the application for completeness and then undertake a technical review process to determine whether to issue an approval
- Other agencies, including the Ministry of Natural Resources (MNR), the Ministry of Transportation (MTO), the Ministry of Tourism and Culture (MTC) and local conservation authorities will also provide input

## Reports included in application:

- ✦ **Archaeology and Cultural Heritage Assessment** – to identify potential effects on archaeological or cultural heritage resources
- ✦ **Natural Heritage Assessment Report** – to identify potential effects on birds, bats, other wildlife, woodlands, wetlands, areas of natural and scientific interest, etc.
- ✦ **Noise Study Report** – to ensure the project is in compliance with noise regulations
- ✦ **Water Body and Water Assessment Report** – to identify potential effects on streams, seepage areas and lakes
- ✦ **Construction Plan, Design and Operation, Decommissioning Reports** – to describe these activities and identify any potential effects resulting from the various project phases
- ✦ **Consultation Report** – to demonstrate how NextEra Energy Canada engaged the public and Aboriginal communities throughout the development of the project
- ✦ **Wind Turbine Specifications** – to describe the turbine technology selected for the project
- ✦ **Project Description Report** – to provide an overview of the project and a summary of all the required REA reports