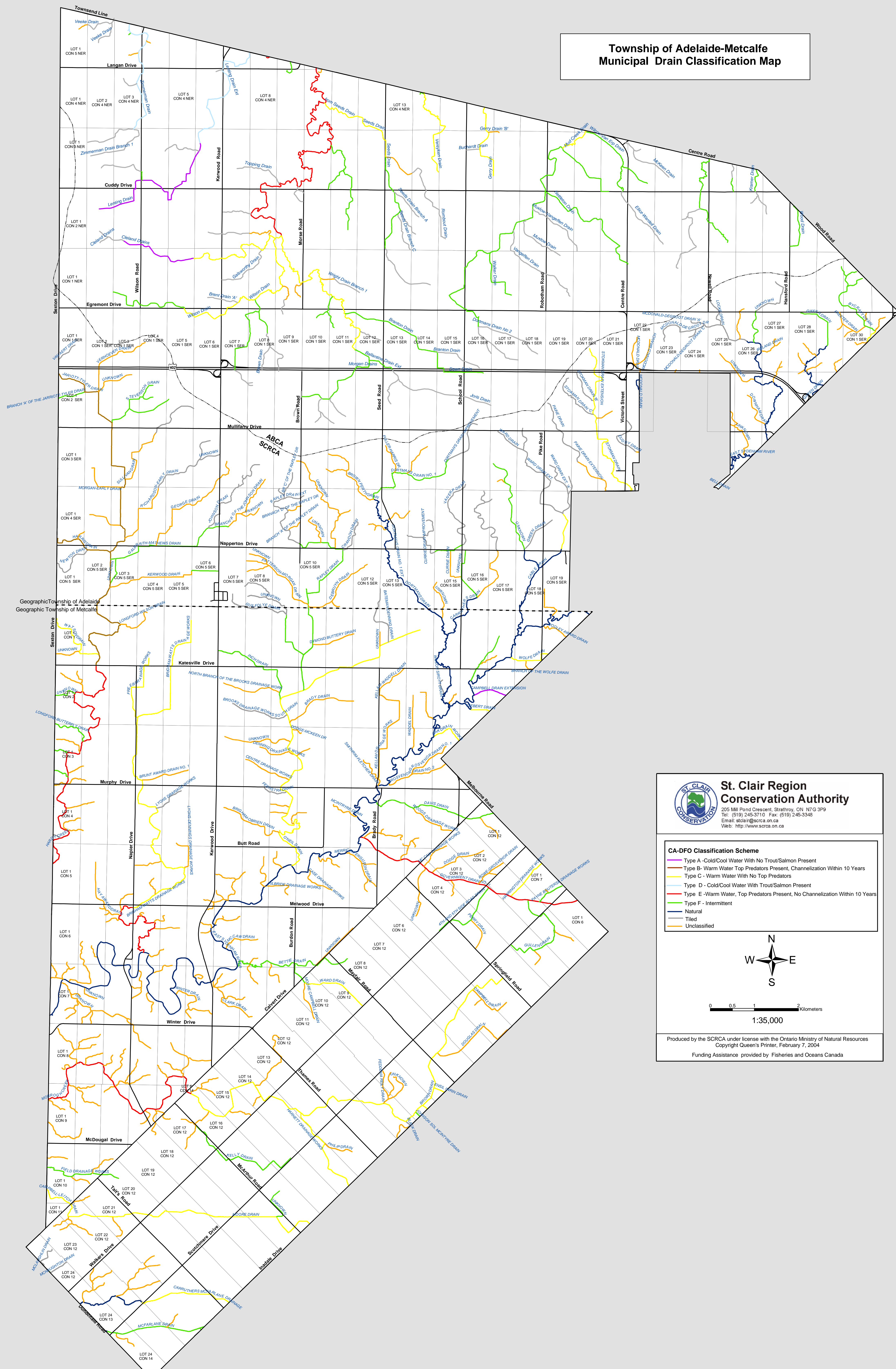


**Township of Adelaide-Metcalf  
Municipal Drain Classification Map**



**St. Clair Region  
Conservation Authority**  
 205 Mill Pond Crescent, Strathroy, ON N7G 3P9  
 Tel: (519) 245-3710 Fax: (519) 245-3348  
 Email: stcra@stcra.on.ca  
 Web: http://www.stcra.on.ca

**CA-DFO Classification Scheme**

- Type A - Cold/Cool Water With No Trout/Salmon Present
- Type B - Warm Water Top Predators Present, Channelization Within 10 Years
- Type C - Warm Water With No Top Predators
- Type D - Cold/Cool Water With Trout/Salmon Present
- Type E - Warm Water, Top Predators Present, No Channelization Within 10 Years
- Type F - Intermittent
- Natural
- Tiled
- Unclassified

N  
W E  
S

0 0.5 1 2 Kilometers  
1:35,000

Produced by the SCRA under license with the Ontario Ministry of Natural Resources  
 Copyright Queen's Printer, February 7, 2004  
 Funding Assistance provided by Fisheries and Oceans Canada

Drain Classification Maps

The Drain Classification maps (2004 edition) were created from the digital flow layer that was received from the Ontario Ministry of Natural Resources in accordance with their data sharing agreement. The drainage flow layer was the result of updating 1983 Ontario Base Mapping using National Topographic Survey (NTS) data and hard copy 1992 aerial photography. This task was completed in early 2000.

As the Drain Classification Review process continued, further data sources were used to update the flow layer in 2003. These data sources were wide ranging and included: verbal input and hand drawn maps from drainage superintendents, fisheries data collection and historical OMAFRA drainage maps. These updates were added to create a flow layer that reflected the information received from each drainage Superintendent in 2003. These additions are an approximation based on the accuracy of the data provided.

It should be noted that not all drains are found on the maps, with specific reference to closed/tiled systems.