

No.

June 14/12

Date

11-1pm Page

POND D - PHOTOS - 247, 248

LOW LYING AREA

GRASSES

WET EDGES - RUSHES

NO CROSSING

POND E, CROSSING W3

45cm wide Culvert

PH 25 - PH 31 (GPS) ON SOUTH SIDE

DRY - GRASSES, NO WATER

PH 32 - CULVERT ON N SIDE

BURIED - DRY

PH 33 - FUNCTIONS AS DRAINAGE

GRASSES INDICATE DRY

FOR SOME TIME

PH 249, 250 SOUTH SIDE (CAMERA)

251/252 'NORTH SIDE'

BW #2

WILLOW, DOGWOOD / RED CEDAR

PH 35 / SWAMPY AREA

MINK FROG

GREEN FROG

No.

11 - 1:00pm

Date

June 14/12 Page

22°C SUNNY

PH 36 SOUTH CULVERT

PH 37 NORTH CULVERT

PH 38 CHANNEL DS OF POND (N SIDE)

NORTH CULVERT ~ 45cm WIDTH

SIDE } ~ 80cm wetted width DS

1.2m ~~at~~ culvert

1cm wetted depth

OILY SHEEN

MOSTLY ORGANIC SUBSTRATE

SOME GRAVEL, WOODY DEBRIS

1 FISH OBSERVED. (MINK
(LEAFY) FROG
BULL FROG

TEMP = 17°C

RIPARIAN COVER - OPEN AT CULVERT

~ 90% DS

SOUTH SIDE - POOL LIKE

~ 50cm DEEP

ORGANIC RICH

VERY LITTLE FLOW / MOVEMENT

4m WIDE

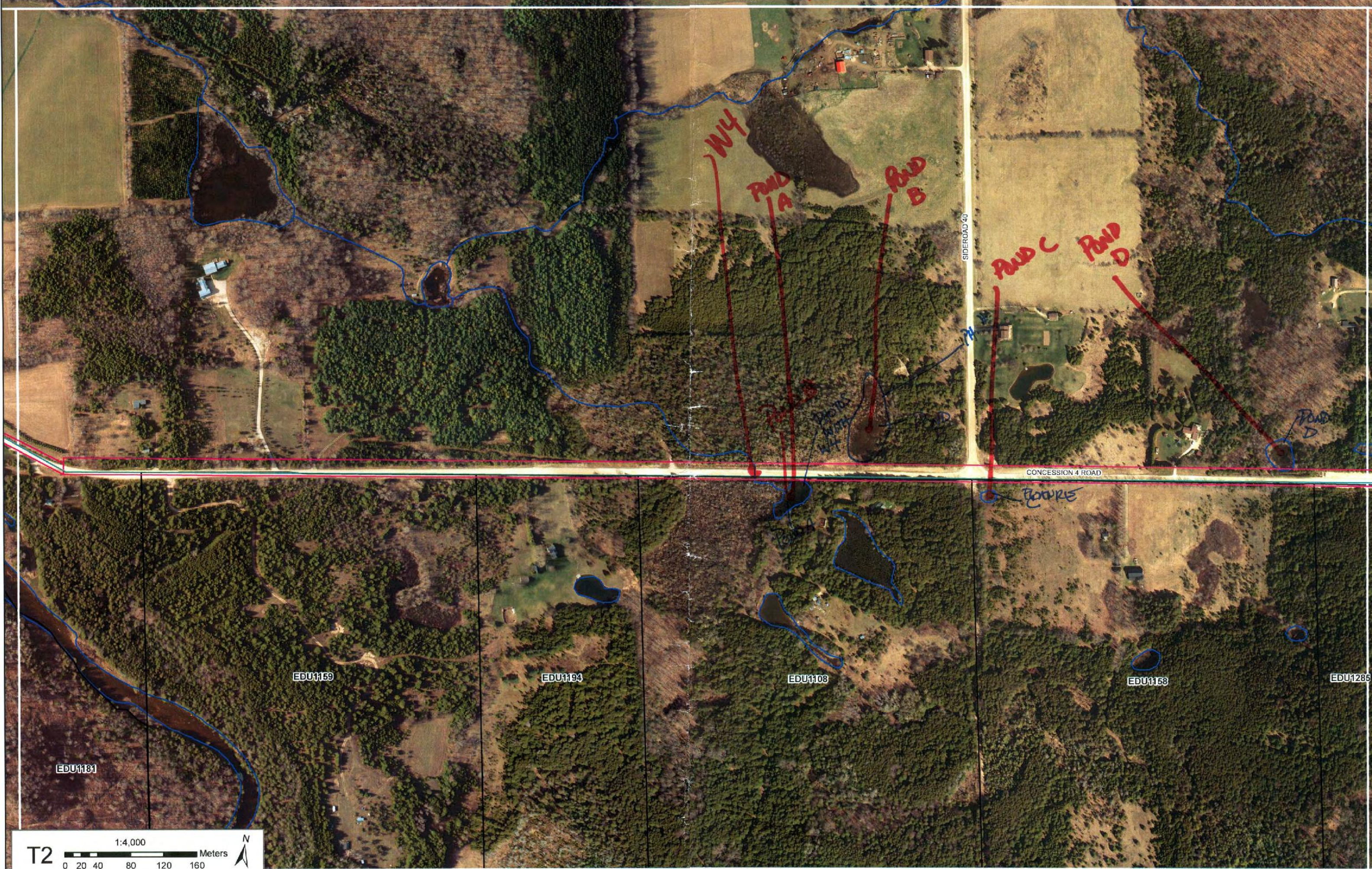
PH 264/65 SOUTH SIDE

PH 42 - ALONG ROADSIDE - NOT A LOT OF ROOM

Ⓢ END OF DRAINAGE PH 44

MARSHY - PHILADELPHIA ALONG

ROADSIDE (PH 44) PH 43 - TOWARDS F



W4

POND A

POND B

POND C

POND D

SIDEROAD 40

CONCESSION 4 ROAD

EDU1159

EDU1194

EDU1108

EDU1163

EDU1285

EDU1181

BOUQUE

