

**LEGEND**

- Study Area (Dec 2011)
- Watercourse (LIO, 2012-06-19)
- Waterbody (LIO, 2012-06-19)
- 128** ELC Unit
- ELC Wooded Communities Boundary

Woodland Community Types Included:

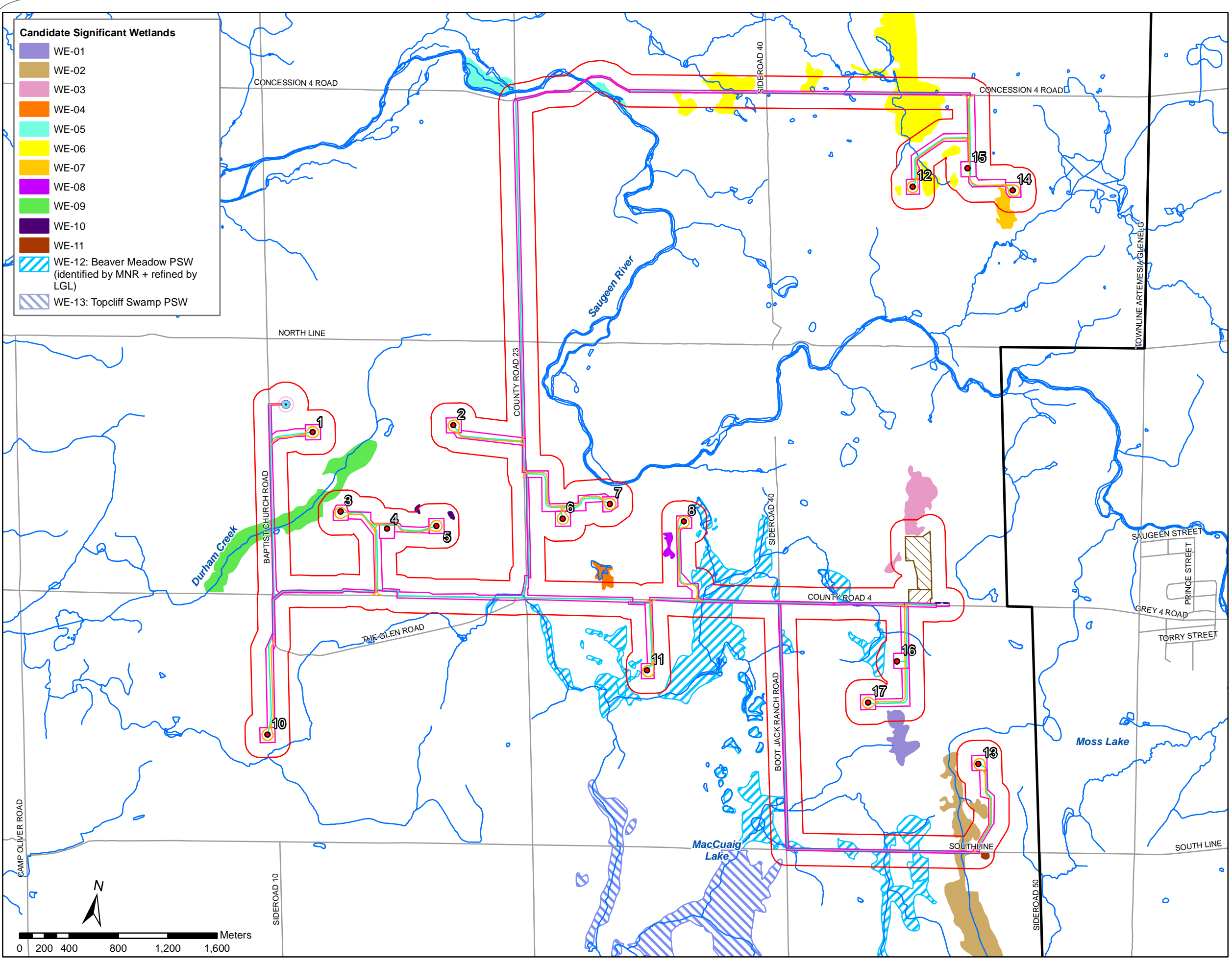
- CUW** Cultural Woodland
- FOC** Coniferous Forest
- FOD** Deciduous Forest
- FOM** Mixed Forest
- SWG** Coniferous Swamp
- SWD** Deciduous Swamp
- SWM** Mixed Swamp

Note: ELC codes and descriptions appear in Appendix D

**Corrections to Records Review: Woodlands**



Project	TA8119	Figure	11
Date	October, 2012	Prepared By:	VLK
Scale	1:32,000	Verified By:	LKR



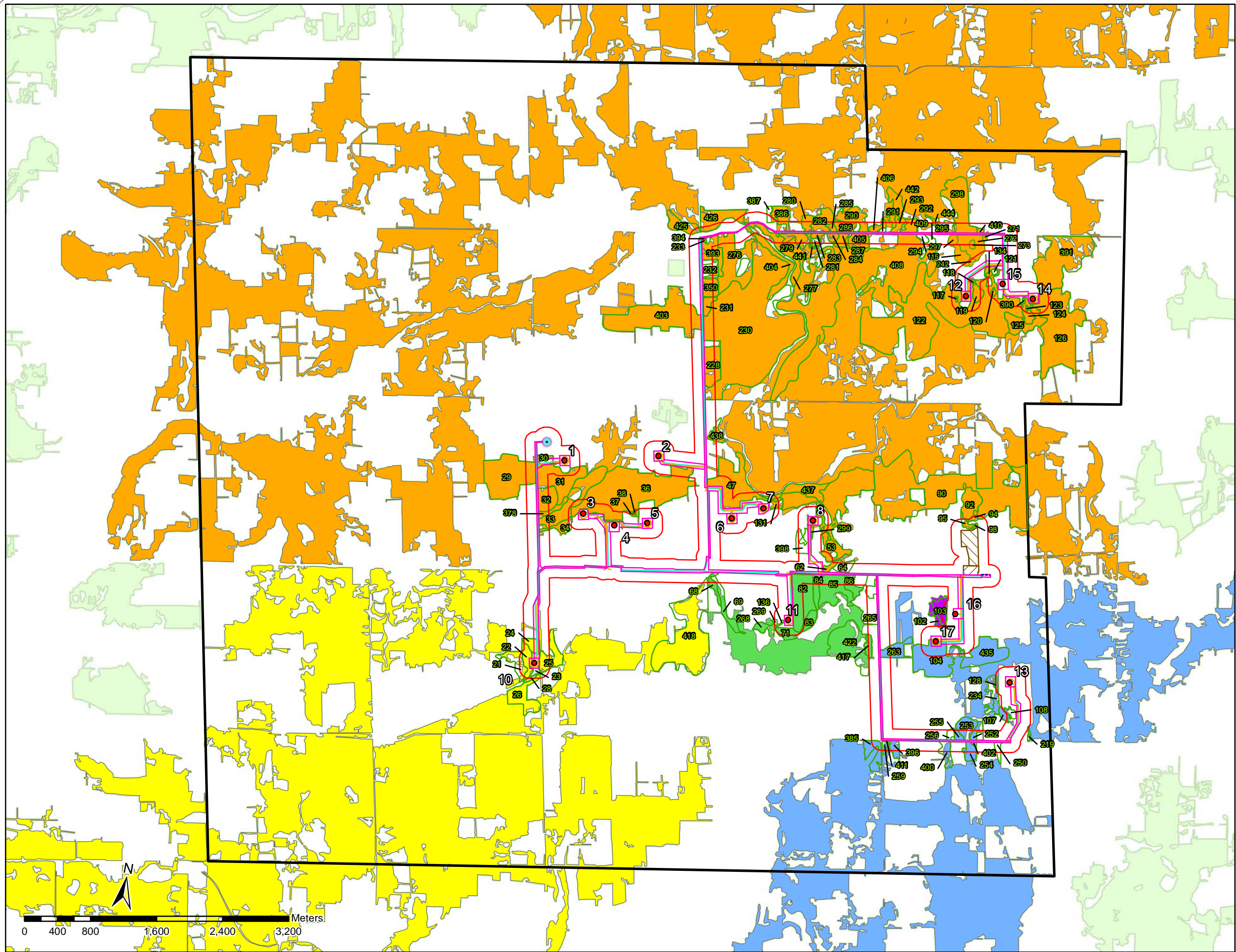
- Candidate Significant Wetlands**
- WE-01
  - WE-02
  - WE-03
  - WE-04
  - WE-05
  - WE-06
  - WE-07
  - WE-08
  - WE-09
  - WE-10
  - WE-11
  - WE-12: Beaver Meadow PSW (identified by MNR + refined by LGL)
  - WE-13: Topcliff Swamp PSW

- LEGEND**
- Site Plan (2012-09-12)**
- Turbine
  - MET Tower
  - Access Road
  - Construction Disturbance
  - Collection
  - Overhead Transmission
  - MET Tower 200ft Disturbance Area
  - Substation
  - Laydown Area
  - 120m Buffer from Project Components
  - Study Area (Dec 2011)
  - Watercourse (LIO, 2012-06-19)
  - Waterbody (LIO, 2012-06-19)

**PSWs and Candidate Significant Wetland Complexes**



Project	TA8119	Figure	12
Date	October, 2012	Prepared By:	KC
Scale	1:30,000	Verified By:	LKR



**LEGEND**

- 123 ELC Unit
- ELC Wooded Communities Boundary
- Site Plan (2012-09-12)**
- Turbine
- Met Tower
- Access Road
- Construction Disturbance
- Collection
- ⋯ Overhead Transmission
- Met Tower 200ft Disturbance Area
- Substation
- Laydown Area
- 120m Buffer from All Project Components
- Study Area (Dec 2011)
- Woodlands (determined from County of Grey Woodlands Layer)**
- WO-01
- WO-02
- WO-03
- WO-04
- WO-05
- County of Grey Woodlands (excluded from Significant Woodland analysis)

Note: ELC codes and descriptions appear in Appendix D

**Candidate Significant Woodlands**



Project	TA8119	Figure	13
Date	Oct, 2012	Prepared By:	VLK
Scale	1:45,000	Verified By:	LKR