

AHF Field Notes May 15 2012

Extracted from Trimble Outdoors in Iphone 4S

POI 1

Location: 17T 0525606E 4893638N

start

POI 1

Location: 17T 0525606E 4893638N

start

Photo 1

Location: 17T 0525735E 4892911N

Photo 2

Location: 17T 0525726E 4892907N

POI 2

Location: 17T 0525700E 4892873N

watercress. water temp 12c

Photo 3

Location: 17T 0525693E 4892873N

Photo 4

Location: 17T 0525702E 4892817N

pileated

POI 3

Location: 17T 0525709E 4892810N

decid forest area. knoll

Photo 5

Location: 17T 0525706E 4892806N

POI 4

Location: 17T 0525679E 4892823N

yellow bellied sapsucker

POI 5

Location: 17T 0525657E 4892858N

swamp. cold water. jewelweed. abundant dead trees

Photo 6

Location: 17T 0525657E 4892858N

POI 6

Location: 17T 0525555E 4893068N

rockpile

Photo 7

Location: 17T 0525555E 4893068N

Photo 8

Location: 17T 0525542E 4893089N

Photo 9

Location: 17T 0525482E 4893115N

marshetigold and ironstaining

AHF Field Notes May 15 2012

Extracted from Trimble Outdoors in Iphone 4S

Photo 10

Location: 17T 0525394E 4893124N

POI 7

Location: 17T 0525397E 4893156N

Photo 11

Location: 17T 0525397E 4893156N

POI 1

Location: 17T 0525740E 4894270N

rickpile

Photo 1

Location: 17T 0525739E 4894269N

POI 2

Location: 17T 0525710E 4894318N

small rock pile

Photo 2

Location: 17T 0525710E 4894318N

neighbor property. large glacier eratica

Photo 3

Location: 17T 0527569E 4893454N

Photo 4

Location: 17T 0527521E 4893371N

v large rock pile

Photo 5

Location: 17T 0527538E 4893161N

small rock pile

Photo 1

Location: 17T 0528813E 4892305N

Photo 2

Location: 17T 0528808E 4892289N

Photo 3

Location: 17T 0528769E 4892241N

deeply embedde large tocks

Photo 4

Location: 17T 0528636E 4892243N

Photo 5

Location: 17T 0528633E 4892245N

POI 1

Location: 17T 0528631E 4892251N

wet area w frogs. chimney crayfish burrows

AHF Field Notes May 15 2012

Extracted from Trimble Outdoors in Iphone 4S

Photo 6

Location: 17T 0528631E 4892251N

POI 2

Location: 17T 0528614E 4892244N

iron staining

Photo 7

Location: 17T 0528533E 4892341N

POI 3

Location: 17T 0528535E 4892334N

large seepage area

Photo 8

Location: 17T 0528517E 4892550N



MAY 15 + 16 2017

LEGEND

- Turbine Layout (2012-04-27)
- Roads (2012-05-02)
- Collection (2012-05-02)
- Construction Disturbance (2012-05-02)
- Project Boundary (Dec 2011)
- Parcel Boundary
- Lease Status**
- Targeted
- Pending
- Signed Lease
- Not Interested

May 15/12

Turbine 12, 15, 14, 13
 -Transmission Route from 13 → county road. 4

May 16/12

Turbine 11 + ALT3, 8, 10
 Transmission Line
 ALT1 + ALT2 to county road 2, 3

American
 Bitter

**East Durham Wind Farm
 2012-05-02 Layout**

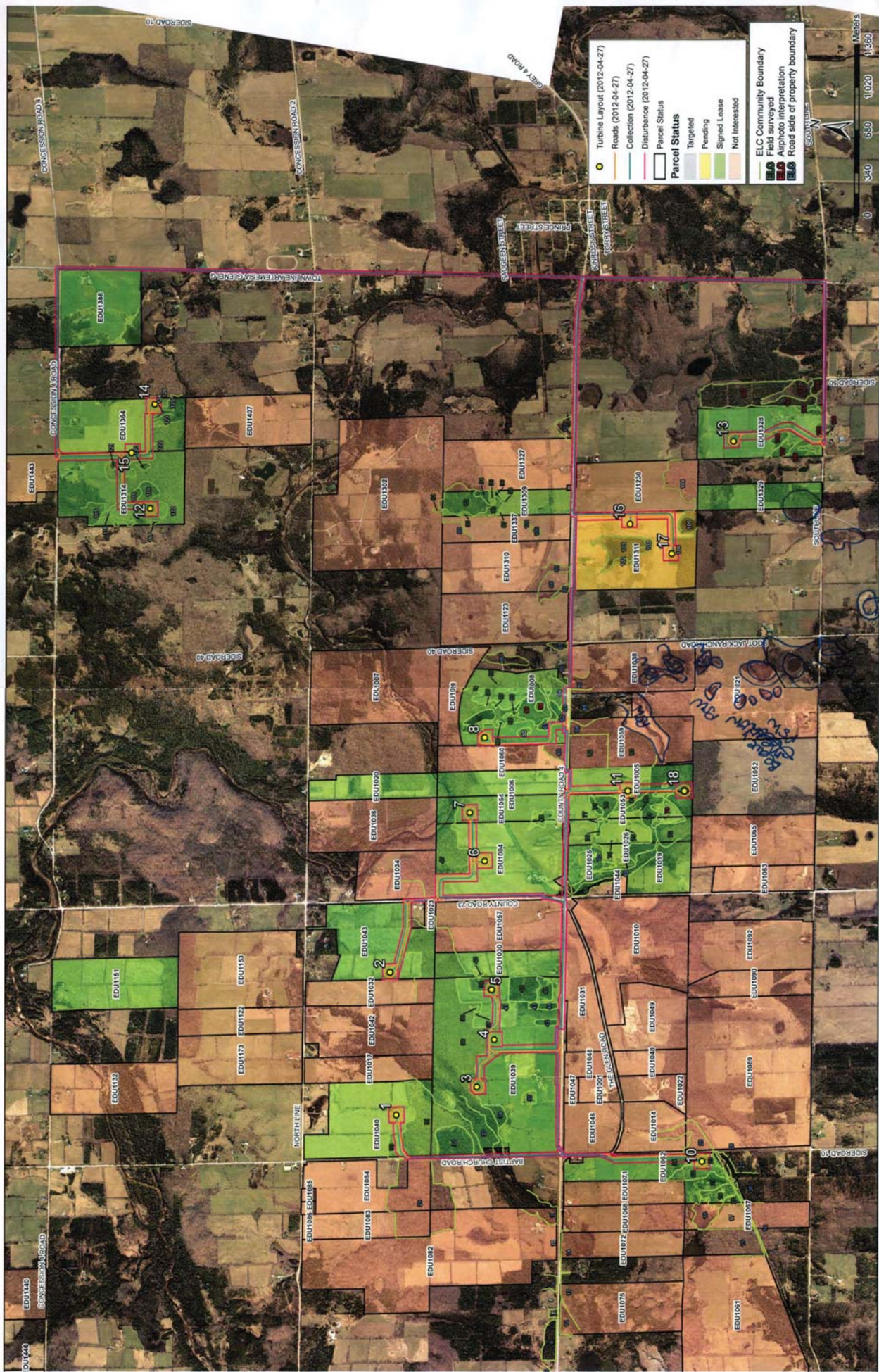


Project	TA6119	Figure	
Date	May, 2012	Prepared By:	KC
Scale	1:45,000	Verified By:	









LEGEND

- Turbine Layout (2012-04-27)
- Roads (2012-05-02)
- Collection (2012-05-02)
- Construction Disturbance (2012-05-02)
- 120m Buffer around Project Components
- Project Boundary (Dec 2011)
- Parcel Boundary
- Watercourses

**East Durham Wind Farm
2012-05-02 Layout**



Project	TAB119	Figure	
Date	May, 2012	Prepared By:	KC
Scale	1:45,000	Verified By:	



EG Nov 15/12
Nov 15/12
Nov 15/12
Nov 15/12
Nov 15/12

NOV 19 2011
NOV 19 2011
NOV 19 2011
NOV 19 2011

AUG 2011

Handwritten note: *Nov 15/12*