



STAGE 2 ARCHAEOLOGICAL ASSESSMENT - EAST DURHAM WIND ENERGY PROJECT

Plate 9: Stage 2, ditch assessment, gravel disturbance and slope, facing west, Concession Road 4 south side, June 7, 2012



Plate 10: Stage 2, ditch assessment, gravel disturbance and slope, facing south, Grey Road 23 west side, June 7, 2012



Plate 11: Stage 2, ditch assessment, gravel disturbance and slope, facing south, Grey Road 23 west side, June 7, 2012



Plate 12: Stage 2, ditch assessment, area of slope, facing south, Grey Road 23 west side, June 7, 2012





STAGE 2 ARCHAEOLOGICAL ASSESSMENT - EAST DURHAM WIND ENERGY PROJECT

Plate 13: Stage 2, ditch assessment, disturbance and slope, facing west, Grey Road 4 north side, June 7, 2012



Plate 14: Stage 2, ditch assessment, poorly drained area, facing east, Grey Road 4 north side, June 7, 2012



Plate 15: Stage 2, ditch assessment, poorly drained area, facing west, Southline Road north side, June 7, 2012



Plate 16: Stage 2, ditch assessment, poorly drained area, facing west, Southline Road south side, June 7, 2012





STAGE 2 ARCHAEOLOGICAL ASSESSMENT - EAST DURHAM WIND ENERGY PROJECT

Plate 17: Stage 2, pedestrian survey at 5 metre intervals, facing north, EDU1364, June 8, 2012



Plate 18: Stage 2, pedestrian survey at 5 metre intervals, facing east, EDU1039, June 5, 2012



Plate 19: Stage 2, test pit survey at 5 metre intervals, facing west, EDU1062, July 5, 2012



Plate 20: Stage 2, area of slope, facing east, EDU1062, July 5, 2012





STAGE 2 ARCHAEOLOGICAL ASSESSMENT - EAST DURHAM WIND ENERGY PROJECT

Plate 21: Stage 2, test pit survey at 5 metre intervals, facing north, EDU1062, July 5, 2012



Plate 22: Stage 2, test pit survey at 5 metre intervals, facing east, EDU1008, July 6, 2012



Plate 23: Stage 2, test pit survey at 5 metre intervals, facing west, EDU1005, July 6, 2012



Plate 24: Stage 2, pedestrian survey at 5 metre intervals, facing north, EDU1008, August 20, 2012





1. Transfer Printed Ironstone



2. Flow Transfer Printed Ironstone



3. Edged Ironstone



4. Painted Ironstone

Plate 25: Location 1 recovered ironstone artifacts, actual size



STAGE 2 ARCHAEOLOGICAL ASSESSMENT - EAST DURHAM WIND ENERGY PROJECT



1. Transfer Printed Whiteware



2. Stamped Whiteware



3. Flow Transfer
Printed Whiteware



4. Painted Whiteware



5. Redware



6. Semi-Porcelain



7. Utensil Handle



8. Machine Cut Nail



9. Agate Button

Plate 26: Location 1 recovered artifacts, actual size



**STAGE 2 ARCHAEOLOGICAL ASSESSMENT - EAST DURHAM
WIND ENERGY PROJECT**



1. Plain Ironstone



2. Transfer Printed Ironstone



3. Edged Ironstone



4. Stamped Ironstone



5. Sponged Ironstone



6. Flow Transfer Printed Ironstone



7. Banded Ironstone



8. Semi-Porcelain



9. Agate Button



10. Banded Yellowware



11. Wire Drawn Nail



12. Machine Cut Nail

Plate 27: Location 2 recovered artifacts, actual size



**STAGE 2 ARCHAEOLOGICAL ASSESSMENT - EAST DURHAM
WIND ENERGY PROJECT**



1. Painted Ironstone



2. Transfer Printed Ironstone



3. Edged Ironstone



4. Banded Ironstone



5. Painted Whiteware



6. Transfer Printed Whiteware



7. Sponged Whiteware



8. Stamped Whiteware



9. Banded Whiteware



10. Yellowware



11. Semi-Porcelain



12. White Clay Pipe Bowl



13. White Clay Pipe Stem



14. Machine Cut Nail



15. Wire Drawn Nail

Plate 28: Location 3 recovered artifacts, actual size



9.0 MAPS

All maps will follow on succeeding pages.



KEY PLAN

LEGEND



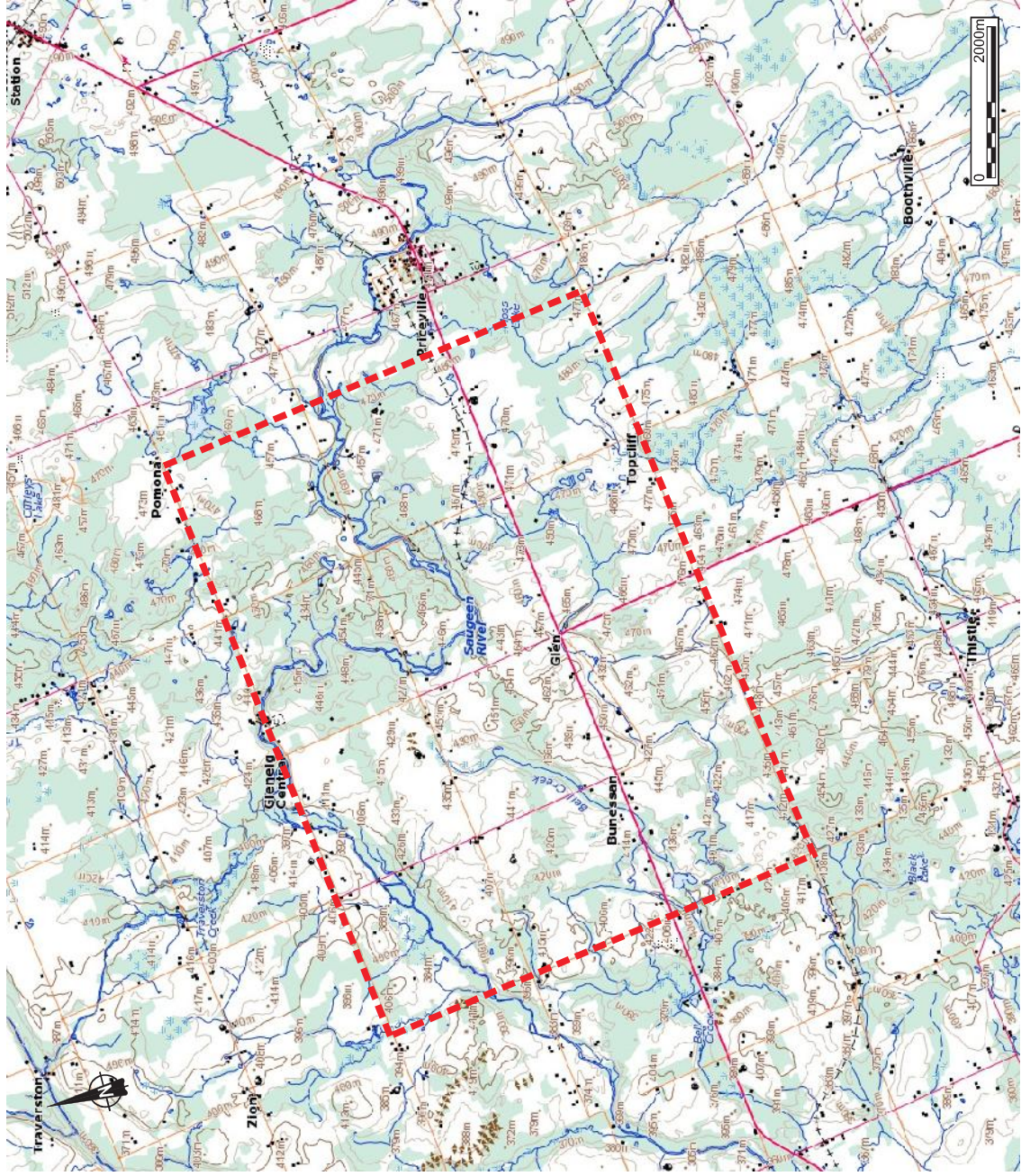
REFERENCE

DRAWING BASED ON NTS MAP SHEET 41A/7 (MARKDALE), CENTRE FOR TOPOGRAPHIC INFORMATION, NATURAL RESOURCES CANADA, 1993

NOTES

THIS DRAWING IS SCHEMATIC ONLY AND IS TO BE READ IN CONJUNCTION WITH ACCOMPANYING TEXT.

ALL LOCATIONS ARE APPROXIMATE.



PROJECT: Stage 2 Archaeological Assessment
East Durham Wind Energy Project
Grey County, Ontario

TITLE: Location of Project Area



PROJECT NO.	DATE	BY	CHECKED	SCALE	FILE NO.
					107-100-0000-0000

Figure 1