



Cedar Point Community Liaison Committee Meeting

June 16, 2015

SAFETY MOMENT

Sharing the Road



SAFETY MOMENT - Sharing the road

Oversized vehicle operators

- Larger construction and transport equipment must have an escort vehicle
- Drivers are not permitted to use cell phones or text while driving unless using a hands-free system
- Turbine convoys respect the public and will attempt to allow passing at safe intervals

Motorists

- Farm machinery can unexpectedly turn onto a public road from a field or driveway
- Oversized vehicle and farm machinery operators may not be able to see you because the large equipment or a load can block part of the rear view
- Passing wide loads requires extra caution as the loads may be longer or wider than expected
- Oversized loads require additional room when turning. Do not try and pass on corners



Project Update

SUNCOR PROJECT TEAM

Group	Area of responsibility
Development	site development, permitting and regulatory compliance
Major Projects	managing detailed engineering and construction
Operations	long term operations of facility
Stakeholder and Aboriginal Relations	communicating and coordinating with community members, municipalities, and First Nations, Métis and Inuit communities

AMEC Is providing Construction Management on site

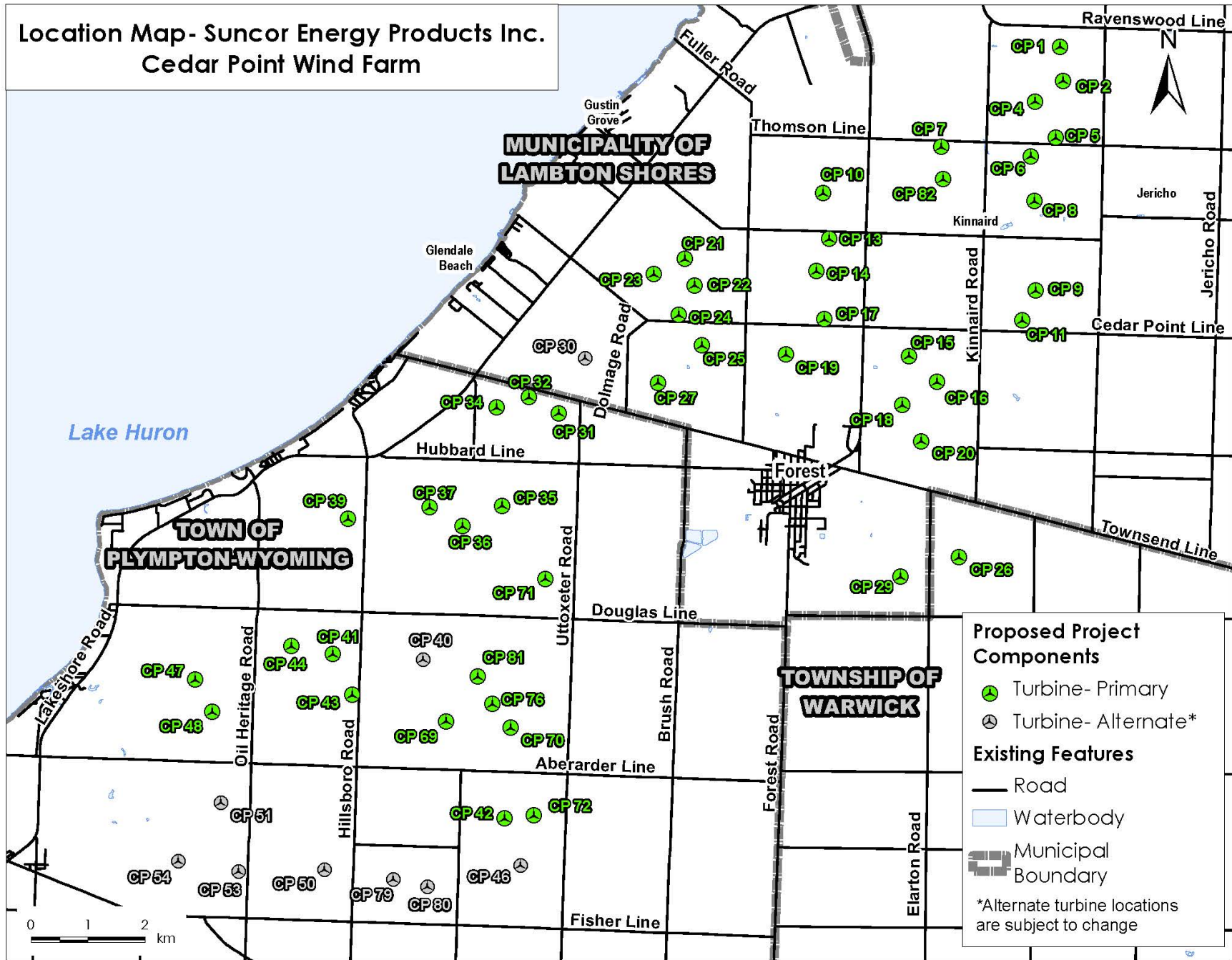
- Manage and supervise all subcontractors
- Ensure facility is built according to design
- Responsible for Site EH&S

Location Map- Suncor Energy Products Inc.
Cedar Point Wind Farm

**MUNICIPALITY OF
LAMBTON SHORES**

**TOWN OF
PLYMPTON-WYOMING**

**TOWNSHIP OF
WARWICK**



Proposed Project Components

- Turbine- Primary
- Turbine- Alternate*

Existing Features

- Road
- Waterbody
- Municipal Boundary

*Alternate turbine locations are subject to change

TIMELINES

Activity	2015									
	Feb	Mar	Apr	May	Jun	Jul	Aug	Sep	Oct	
Project Survey	█									
Mobilization & Start Construction	★	█								
Construct Entrances	█	█	█	█	█	█	█	█	█	
Install Transmission Line	█	█	█	█	█	█	█	█	█	
Install Collection System										
Construct Substation										
Construct Access Roads										
Construct Turbine Foundations										
Turbine Installation										
Substantial Completion										★
Site Reclamation										

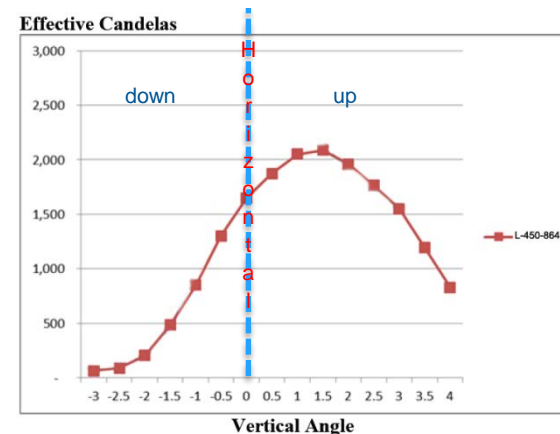
A photograph of two young boys of Hispanic descent standing in a field, each holding a small pine sapling with soil. They are wearing blue gardening gloves. The boy on the left is wearing a blue and white plaid shirt, and the boy on the right is wearing a red and white plaid shirt. In the background, a woman in a dark suit is visible, holding a clipboard. The sky is blue with scattered white clouds.

Follow-up from last meeting

LIGHTING

- Turbine lights
 - Transport Canada Standard 621 outlines requirements for turbine lighting
 - Red medium intensity flashing beacon of 2000 candela nominal output located on the nacelle.
 - In order to reduce the amount of lighting, the required lights are installed at intervals in the order of 900m such that not all wind turbines of a wind farm need lighting.
 - The lights are provided with means to make them flash in unison.
- Orga L450-864G Red LED Beacon
 - Low ground level scatter.
 - 2000 Candelas at $+1.5^\circ$ from horizontal
 - 70 to 80 Candelas at -3.0° from horizontal

L450-864(G) Vertical Light Beam Photometric Chart
as Certified by Intertek(ETL) Testing Laboratories



ROAD MAINTENANCE

Crews complete daily inspections and repairs where needed

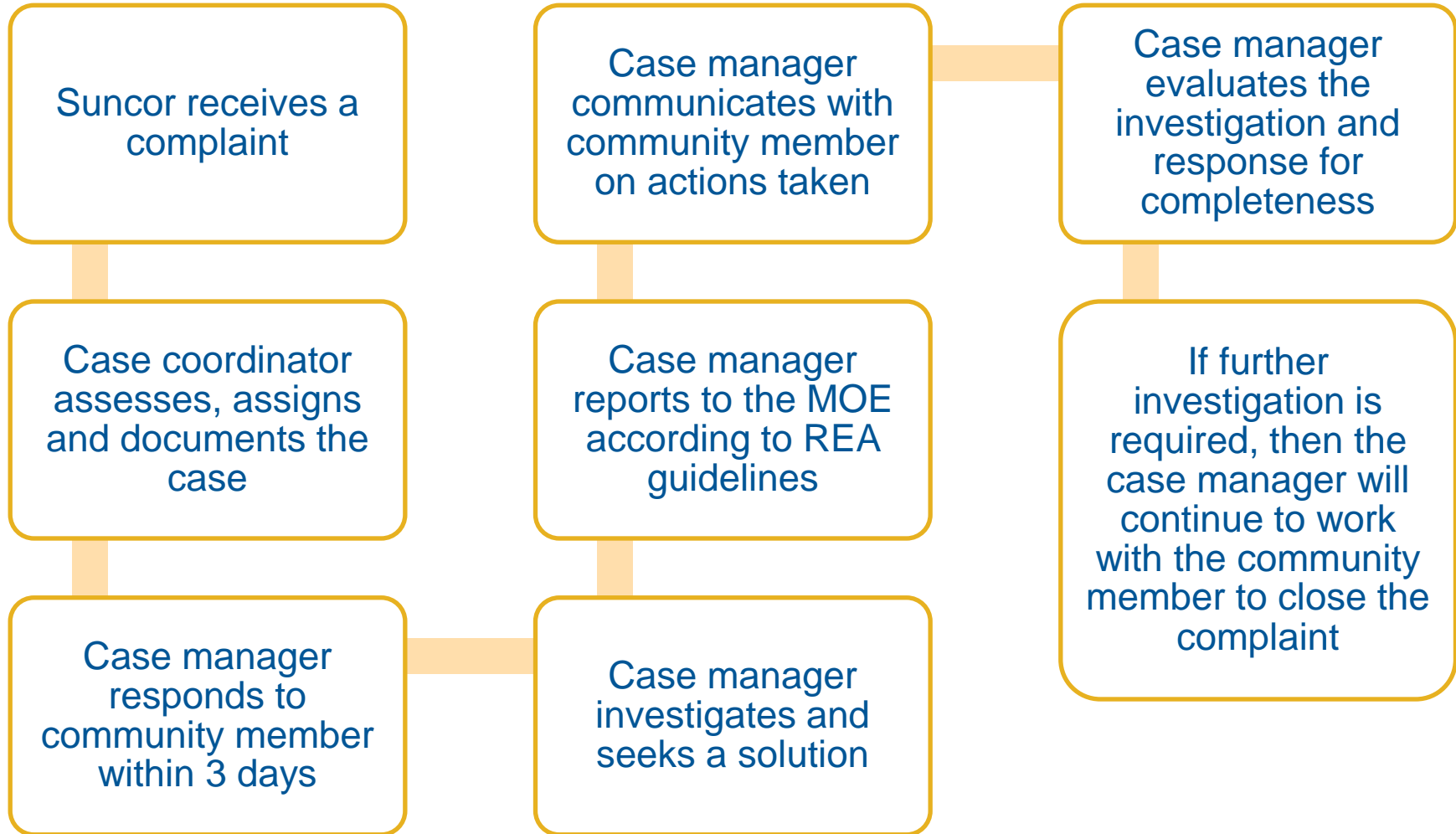
Gravel Roads

- Regular grading
- Reviewing the potential application of brine to help bind road surfaces and mitigate dust

Paved Roads

- Remove chipped areas and apply gravel throughout construction
- After construction, patches will be applied in accordance with municipal bylaws

COMPLAINT RESOLUTION PROCESS



HEALTH AND SAFETY REPORT

Concerns reported by community members:

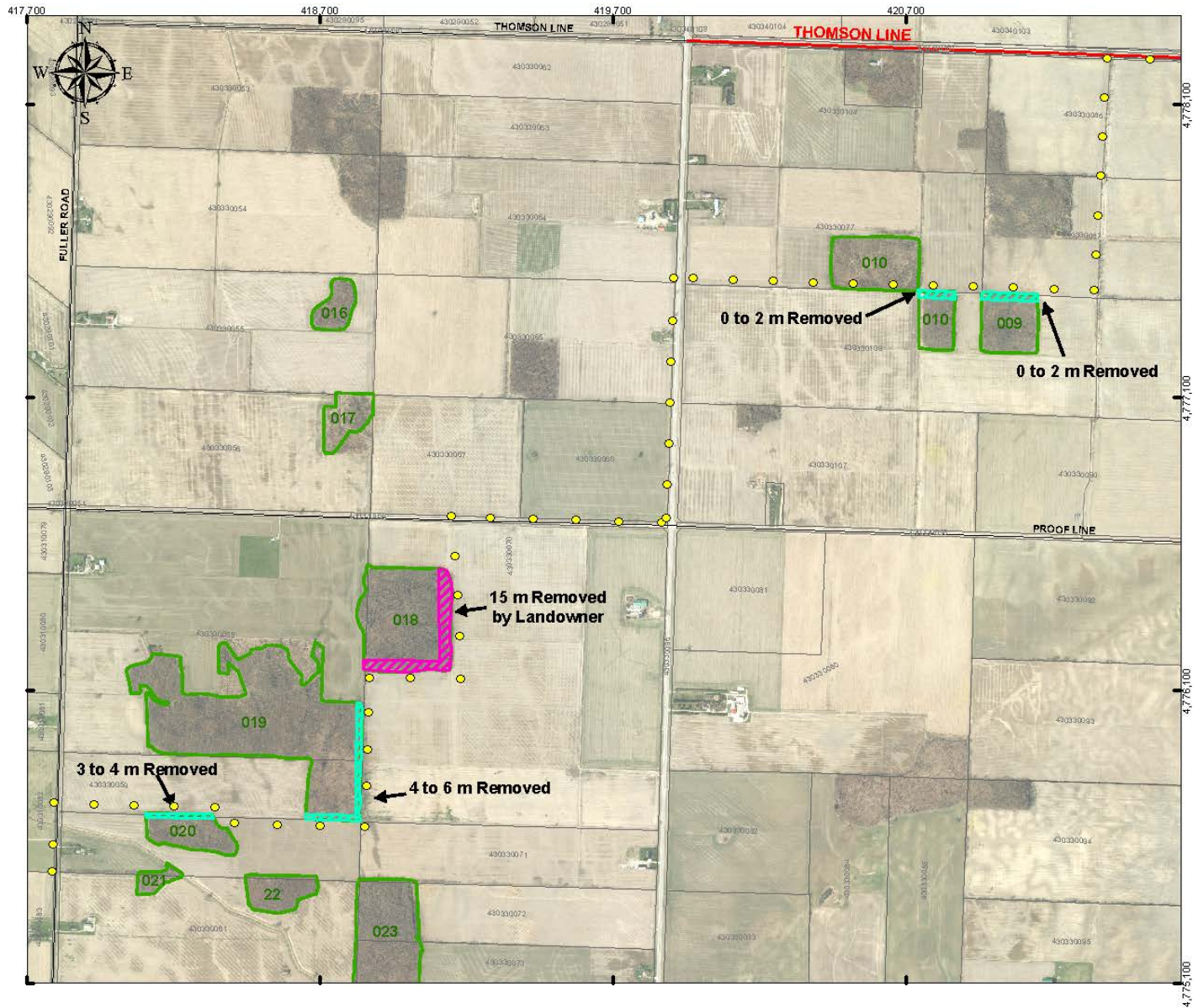
1. Speeding construction vehicles
2. Dust related to construction activities

Actions taken

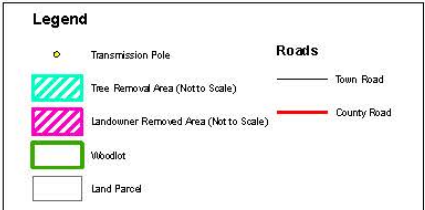
- All construction personnel were reminded of construction speed limits: 20 km/hr
- Construction personnel caught exceeding speed limits will be sent home for the week without pay
- In morning meetings, contractors are reminded to consider road and weather conditions when working



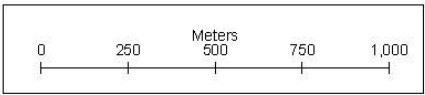
Reclamation Update



Cedar Point II Tree Removal Areas



Notes To User:
 Developed to show locations and extent of woodlot removal in the Cedar Point II Project
 Removal areas are not to scale (see labels for width)
PRIVILEGED & CONFIDENTIAL



1:12,500	
	Cedar Point
	Date: 5/26/2015
	NAD 83 UTM 17

A large, white wind turbine stands in a field of golden-brown crops. The sun is setting on the horizon, creating a warm, orange glow. The sky transitions from a deep blue at the top to a pale yellow near the horizon. A horizontal banner with a gradient from orange to yellow is overlaid across the middle of the image.

Construction Photos

SUBSTATION CABLE TRENCH



OPERATIONS AND MAINTENANCE BUILDING



TRANSFORMER BLOCK



FOUNDATION PAD



SITE MONITORING



COMMUNITY FEEDBACK

Emergencies

- Dial 9-1-1 or your local emergency response number

Cedar Point Questions

- Email cedarpoint@suncor.com
- Call toll-free 1-866-344-0178

Landowners with leases

- Contact Contract Land Services (Bruce Lyle or Earl Moore)

Media inquiries

- Call 403-296-4000