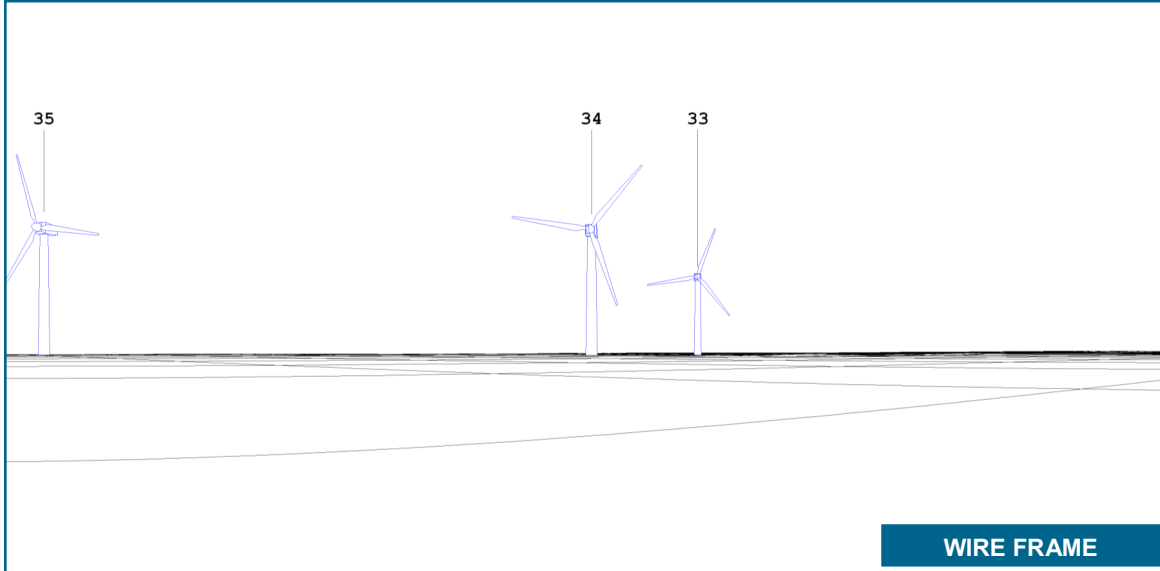




**VISUAL SIMULATION**



**ORIGINAL PHOTO**



**WIRE FRAME**

Note:  
 \* The Wire Frame Technical drawing does not take into consideration vegetation. It is possible that wind turbines are visible on the wire frame drawing but not on the visual simulation.

**TECHNICAL DATA**

**PHOTOGRAPH - VIEW POINT**

Photograph Number:		41
Coordinates (UTM 17 NAD83) :	441196 E	4758217 N
Altitude with respect to mean sea level:		250 m
Date Photograph was taken :		November 3 <sup>rd</sup> , 2011
Direction :		217 degree T.N.
Focal Length :		28 mm
View span :		65 degrees
Altitude of photograph with respect to ground :		1.8 m

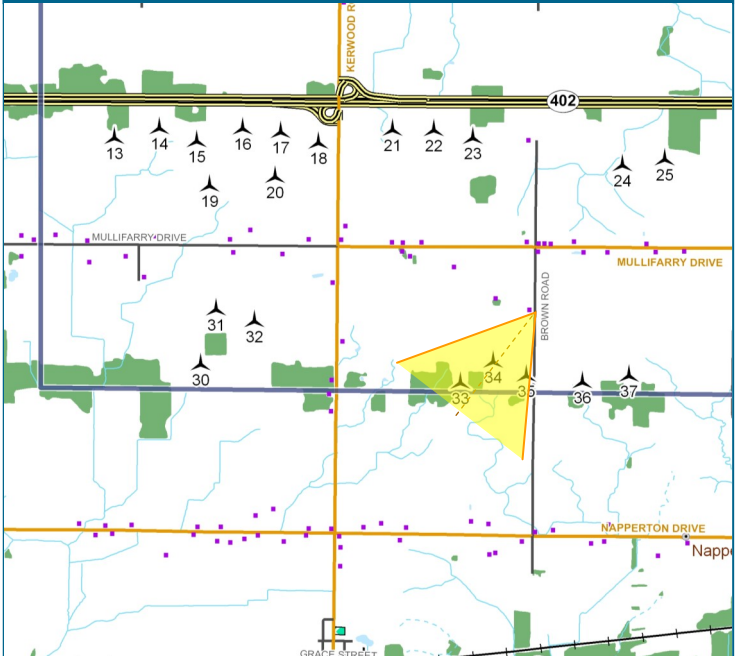
**WIND TURBINES USED**

Model :		GE 1.6 100
Height of nacelle—mid point :		80 m
Rotor Diameter :		100 m

**SIMULATION**

Visual Simulation No. :	PM02-1009ADE-41-E441196_N4758217-L01-T02-D217-CA01.WFV
Configuration No. :	L01-1009ADEL-PHOM-20111102-AN.WFL
Total number of wind turbines for the project:	38
Total number of visible wind turbines in visual simulation:	3
Closest visible wind turbine :	No 35 at 590 m
Furthest visible wind turbine :	No 33 at 950 m

**MAP**



Prepared for :

Prepared by :

Date : April 19<sup>th</sup>, 2012  
 Version 01

**VISUAL SIMULATION**  
**As viewed from Brown Road**

**Adelaide Wind Farm**