

435000 437500 440000 442500 445000 447500 450000 452500 455000 457500

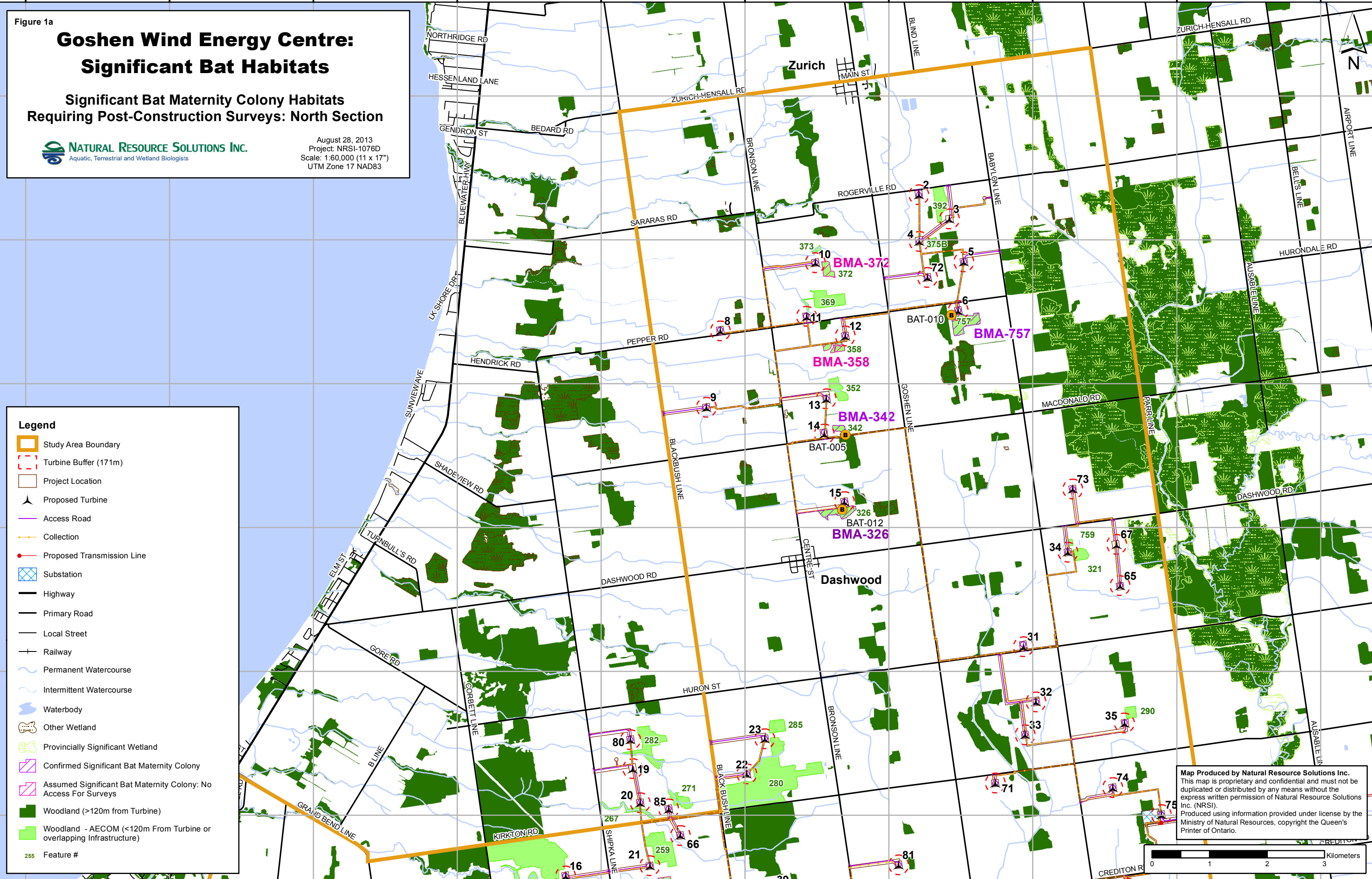


Figure 1a
**Goshen Wind Energy Centre:
 Significant Bat Habitats**
 Significant Bat Maternity Colony Habitats
 Requiring Post-Construction Surveys: North Section

NATURAL RESOURCE SOLUTIONS INC.
 Aquatic, Terrestrial and Wetland Biologists

August 28, 2013
 Project: NRSI-1076D
 Scale: 1:60,000 (11 x 17")
 UTM Zone 17 NAD83

Legend

- Study Area Boundary
- Turbine Buffer (171m)
- Project Location
- Proposed Turbine
- Access Road
- Collection
- Proposed Transmission Line
- Substation
- Highway
- Primary Road
- Local Street
- Railway
- Permanent Watercourse
- Intermittent Watercourse
- Waterbody
- Other Wetland
- Provincially Significant Wetland
- Confirmed Significant Bat Maternity Colony
- Assumed Significant Bat Maternity Colony: No Access For Surveys
- Woodland (>120m from Turbine)
- Woodland - AECOM (<120m From Turbine or overlapping Infrastructure)

255 Feature #

Map Produced by Natural Resource Solutions Inc.
 This map is proprietary and confidential and must not be duplicated or distributed by any means without the express written permission of Natural Resource Solutions Inc. (NRSI).
 Produced using information provided under license by the Ministry of Natural Resources, copyright the Queen's Printer of Ontario.



435000 437500 440000 442500 445000 447500 450000 452500 455000 457500

4807500 4805000 4802500 4800000 4797500 4795000

Path: X:\1076_GoshenNRSI_1076D_Fig1_ConfirmedSign_40K_2013_08_28_KEB.mxd