



Image 143: Area of No Archaeological Potential – Disturbed Lands at GSH1757
(Photo Taken August 19, 2013; Facing North)



Image 144: View of Crewmember Test Pitting to Confirm Disturbance at GSH1758
(Photo Taken on August 19, 2013; Facing West)



Image 145: View of Disturbed Test Pit at GSH1758
(Photo Taken on August 19, 2013)



Image 146: Area of No Archaeological Potential – Disturbed Lands at GSH1758
(Photo Taken August 19, 2013; Facing North)



**Image 147: Area of No Archaeological Potential – Disturbed Lands at GSH1766
(South)**
(Photo Taken August 28, 2013; Facing South)



**Image 148: View of Crewmember Test Pitting to Confirm Disturbance at GSH1780
(Photo Taken on August 27, 2013; Facing South)**



Image 149: View of Disturbed Test Pit at GSH1780
(Photo Taken on August 27, 2013)



Image 150: Area of No Archaeological Potential – Disturbed Lands at GSH1780
(Photo Taken August 27, 2013; Facing West)



Image 151: View of Crewmembers Test Pitting at a Maximum 5 m Interval at GSH1949
(Photo Taken August 15, 2013; Facing Northeast)



Image 152: View of Typical Test Pit Excavated 5 cm into Subsoil at GSH1949
(Photo Taken on August 15, 2013)



Image 153: Area of No Archaeological Potential – Disturbed Lands at GSH1949
(Photo Taken August 15, 2013; Facing North)



Image 154: Area of No Archaeological Potential – Disturbed Lands at GSH2028
(Photo Taken August 13, 2013; Facing North)



Image 155: View of Crewmember Test Pitting to Confirm Disturbance at GSH2043
(Photo Taken August 9, 2013; Facing North)



Image 156: View of Disturbed Test Pit at GSH2043
(Photo Taken on August 9, 2013)



Image 157: Area of No Archaeological Potential – Disturbed Lands at GSH2043
(Photo Taken August 9, 2013; Facing North)



Image 158: View of Crewmember Test Pitting to Confirm Disturbance at GSH2046
(Photo Taken August 9, 2013; Facing Northeast)



Image 159: View of Disturbed Test Pit at GSH2046
(Photo Taken August 9, 2013)



Image 160: Area of No Archaeological Potential – Disturbed Lands at GSH2046
(Photo Taken August 9, 2013; Facing North)



Image 161: Area of No Archaeological Potential – Disturbed Lands at GSH2053
(Photo Taken August 15, 2013; Facing West)



Image 162: Area of No Archaeological Potential – Disturbed Lands at GSH2053
(Photo Taken August 15, 2013; Facing East)



Image 163: View of Crewmembers Test Pitting to Confirm Disturbance at GSH2056
(Photo Taken August 13, 2013; Facing Northeast)



Image 164: Area of No Archaeological Potential – Disturbed Lands at GSH2056
(Photo Taken August 13, 2013; Facing South)



Image 165: View of Crewmembers Test Pitting to Confirm Disturbance at GSH2099
(Photo Taken August 9, 2013; Facing East)



Image 166: View of Disturbed Test Pit at GSH2099
(Photo Taken August 9, 2013)



Image 167: Area of No Archaeological Potential – Disturbed Lands at GSH2099
(Photo Taken August 9, 2013; Facing West)



Image 168: View of Crewmember Test Pitting to Confirm Disturbance at GSH2108
(Photo Taken August 9, 2013; Facing South)



Image 169: View of Disturbed Test Pit at GSH2108
(Photo Taken August 9, 2013)



Image 170: Area of No Archaeological Potential – Disturbed Lands at GSH2108
(Photo Taken August 9, 2013; Facing East)



Image 171: View of Disturbed Test Pit at GSH2133
(Photo Taken August 9, 2013)



Image 172: Area of No Archaeological Potential – Disturbed Lands at GSH2133
(Photo Taken August 9, 2013; Facing West)



Image 173: View of Crewmembers Test Pitting to Confirm Disturbance at GSH2158
(Photo Taken August 13, 2013; Facing Northwest)



Image 174: Area of No Archaeological Potential – Disturbed Lands at GSH2158
(Photo Taken August 13, 2013; Facing North)



Image 175: View of Crewmember Test Pitting to Confirm Disturbance at GSH2236
(Photo Taken September 3, 2013; Facing North)



Image 176: View of Disturbed Test Pit at GSH2236
(Photo Taken September 3, 2013)



Image 177: Area of No Archaeological Potential – Disturbed Lands at GSH2236
(Photo Taken September 3, 2013; Facing East)



Image 178: View of Disturbed Test Pit at GSH2237
(Photo Taken August 15, 2013)



Image 179: Area of No Archaeological Potential – Disturbed Lands at GSH2237
(Photo Taken August 15, 2013; Facing South)



Image 180: View of Disturbed Test at GSH2238
(Photo Taken August 15, 2013)



Image 181: Area of No Archaeological Potential – Disturbed Lands at GSH2238
(Photo Taken August 15, 2013; Facing North)



Image 182: Area of No Archaeological Potential – Disturbed Lands at GSH2255
(Photo Taken August 28, 2013; Facing East)



Image 183: View of Field Conditions during Pedestrian Survey at GSH2381
(Photo Taken September 9, 2013)



Image 184: View of Crewmembers Pedestrian Surveying at Reduced Intervals at GSH2381
(Photo Taken September 9, 2013; Facing West)



Image 185: View of Field Conditions during Pedestrian Survey at GSH2411/2956/2717
(Photo Taken July 30, 2013; Facing Southeast)



Image 186: View of Crewmembers Pedestrian Surveying at a Maximum Interval of 5 m at GSH2411/2956/2717
(Photo Taken July 30, 2013; Facing South)



Image 187: View of Field Conditions during Pedestrian Survey at GSH2411/2956/2717
(Photo Taken September 9, 2013)



Image 188: View of Crewmembers Pedestrian Surveying at Reduced Intervals at GSH2411/2956/2717
(Photo Taken September 9, 2013; Facing North)



Image 189: View of Crewmember Test Pitting at a Maximum Interval of 5 m at GSH2411/2956/2717 (Photo Taken September 9, 2013; Facing South)



Image 190: View of Typical Test Pit Excavated 5 cm into Subsoil at GSH2411/2956/2717 (Photo Taken September 9, 2013)



Image 191: View of Field Conditions during Pedestrian Survey at GSH2555
(Photo Taken July 10, 2013)



Image 192: View of Crewmembers Pedestrian Surveying at 5 m Intervals at GSH2555
(Photo Taken July 10, 2013; Facing West)



Image 193: Area of No Archaeological Potential – Disturbed Lands at GSH2767
(Photo Taken August 29, 2013; Facing Southeast)



Image 194: Area of No Archaeological Potential – Disturbed Lands at GSH2838
(Photo Taken August 29, 2013; Facing Northeast)



Image 195: View of Field Conditions during Pedestrian Survey at GSH3065
(Photo Taken August 20, 2013)



Image 196: View of Crewmembers Pedestrian Surveying at 5 m Intervals at GSH3065
(Photo Taken August 20, 2013; Facing North)



Image 197: View of Field Conditions during Pedestrian Survey at GSH3068
(Photo Taken July 30, 2013; Facing East)



Image 198: View of Crewmembers Pedestrian Surveying at 5 m Intervals at GSH3068
(Photo Taken July 30, 2013; Facing East)



Image 199: View of Crewmember Test Pitting at a Maximum Interval of 5 m at GSH3068
(Photo Taken August 20, 2013; Facing South)



Image 200: View of Typical Test Pit Excavated 5cm into Subsoil at GSH3068
(Photo Taken August 20, 2013)



Image 201: View of Crewmember Test Pitting to Confirm Disturbance at Grand Bend Line from GSH1528 to GSH1016 (North)
(Photo Taken September 3, 2013; Facing South)



Image 202: Area of No Archaeological Potential – Disturbed Lands at Grand Bend Line from GSH1528 to GSH1016 (North)
(Photo Taken September 3, 2013; Facing South)



Image 203: View of Disturbed Test Pit at Grand Bend Line from GSH1528 to GSH1016 (North)
(Photo Taken August 29, 2013)



Image 204: Area of No Archaeological Potential – Disturbed Lands at Grand Bend Line from GSH1528 to GSH1016 (North)
(Photo Taken August 29, 2013; Facing Northwest)



Image 205: View of Crewmember Test Pitting to Confirm Disturbance at Babylon Line from GSH2058 to GSH2030
(Photo Taken August 29, 2013; Facing Northwest)



Image 206: View of Disturbed Test Pit Excavated at Babylon Line from GSH2058 to GSH2030
(Photo Taken August 29, 2013)



**Image 207: Area of No Archaeological Potential – Disturbed Lands at Babylon Line
from GSH2058 to GSH2030
(Photo Taken August 29, 2013; Facing North)**



**Image 208: View of Crewmember Test Pitting to Confirm Disturbance at Babylon Line
from GSH2058 to GSH2030
(Photo Taken August 29, 2013; Facing South)**



Image 209: View of Disturbed Test Pit Excavated at Babylon Line from GSH2058 to GSH2030
(Photo Taken August 29, 2013)



Image 210: Area of No Archaeological Potential – Disturbed Lands at Babylon Line from GSH2058–GSH2030
(Photo Taken August 29, 2013; Facing North)



Image 211: View of Crewmember Test Pitting to Confirm Disturbance at Blackbush Line from GSH1758 to GSH2252
(Photo Taken August 28, 2013; Facing South)



Image 212: View of Disturbed Test Pit Excavated at Blackbush Line from GSH1758 to GSH2252
(Photo Taken August 28, 2013)



Image 213: Area of No Archaeological Potential – Disturbed Lands at Blackbush Line from GSH1758 to GSH2252
(Photo Taken August 28, 2013; Facing South)



Image 214: View of Crewmember Test Pitting to Confirm Disturbance at Mollard Line from GSH1559 to GSH1099
(Photo Taken August 26, 2013; Facing East)



Image 215: View of Disturbed Test Pit Excavated at Mollard Line from GSH1559 to GSH1099
(Photo Taken August 26, 2013)



Image 216: Area of No Archaeological Potential – Disturbed Lands at Mollard Line from GSH1559 to GSH1099
(Photo Taken August 26, 2013; Facing North)



Image 217: Area of No Archaeological Potential – Disturbed Lands at Bronson Line at GSH1077
(Photo Taken August 29, 2013; Facing South)



Image 218: View of Crewmember Test Pitting at a Maximum Interval of 5 m at Huron Street at GSH1013
(Photo Taken August 9, 2013; Facing South)



Image 219: View of Disturbed Test Pit Excavated at Huron Street at GSH1013
(Photo Taken August 9, 2013)



Image 220: Area of No Archaeological Potential – Disturbed Lands at Huron Street at GSH1013
(Photo Taken August 9, 2013; Facing North)

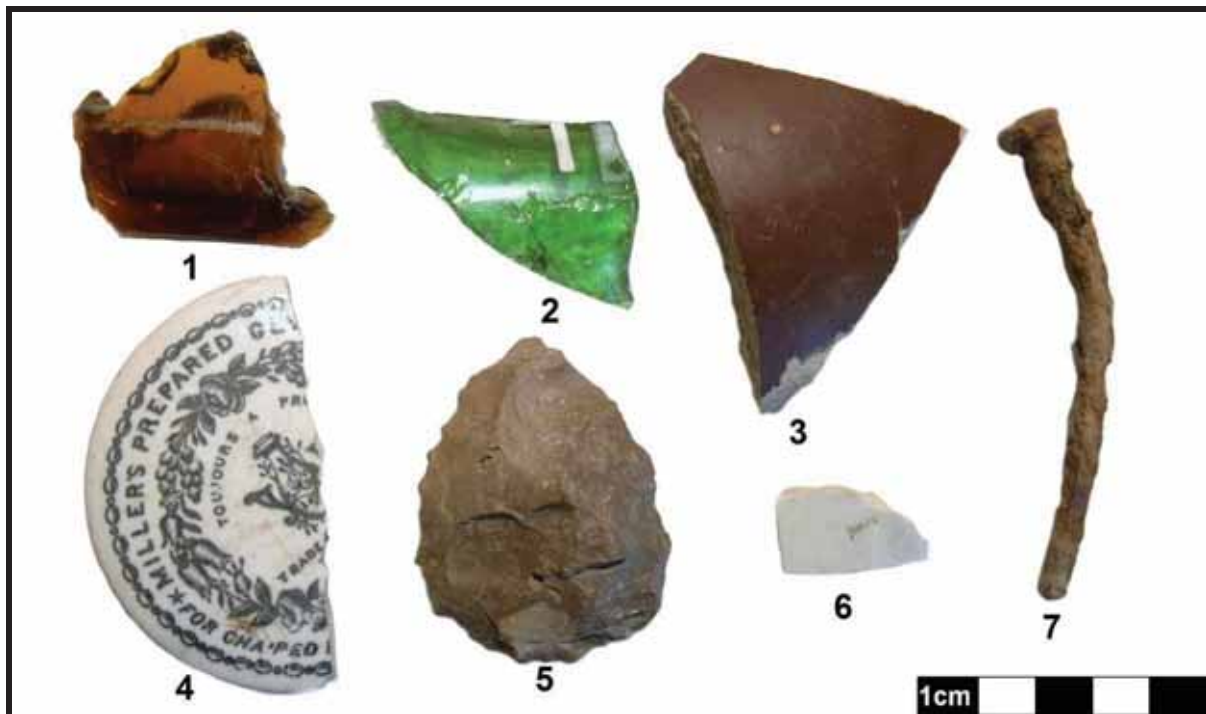


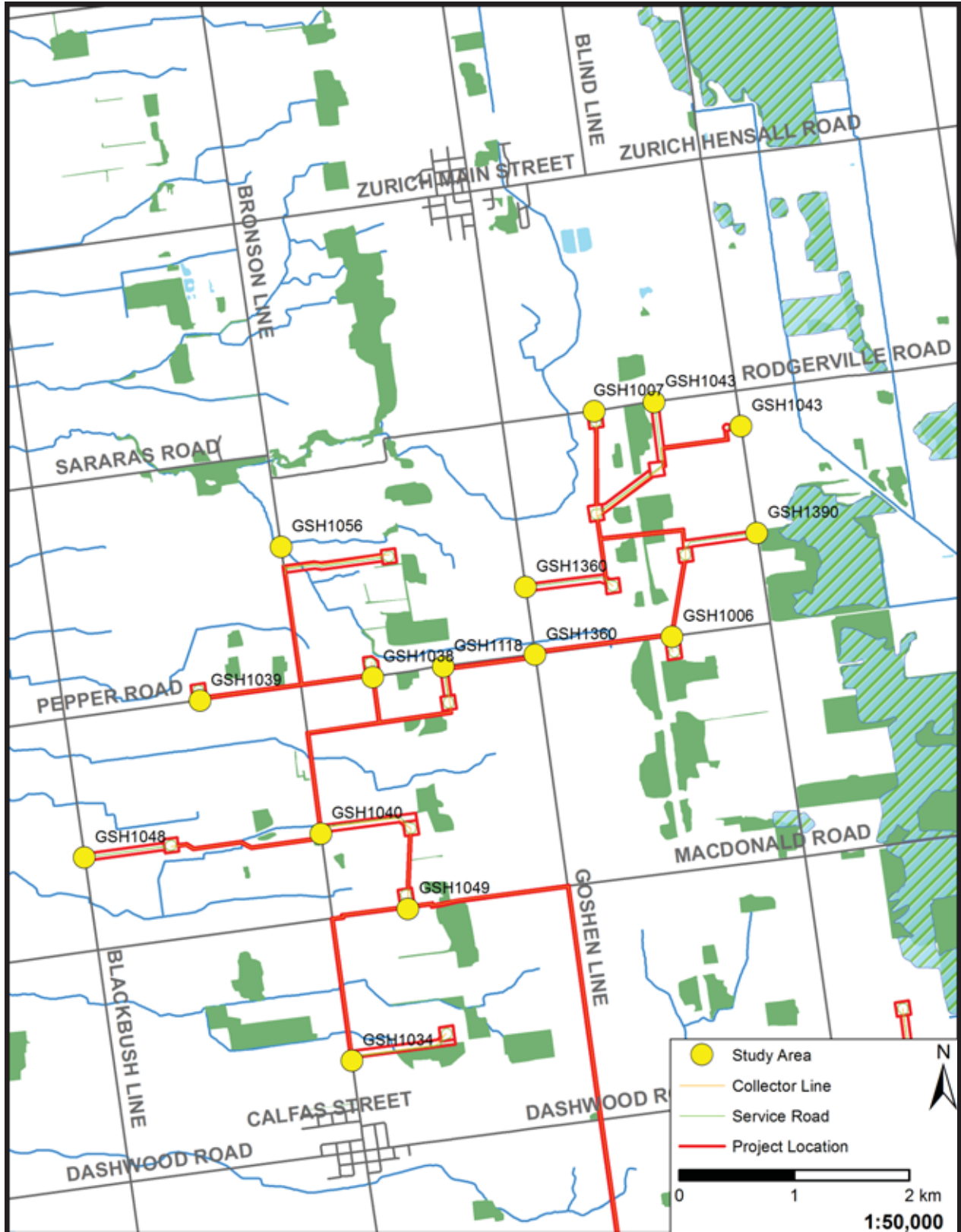
Image 221: Sample of Artifacts from Location 64

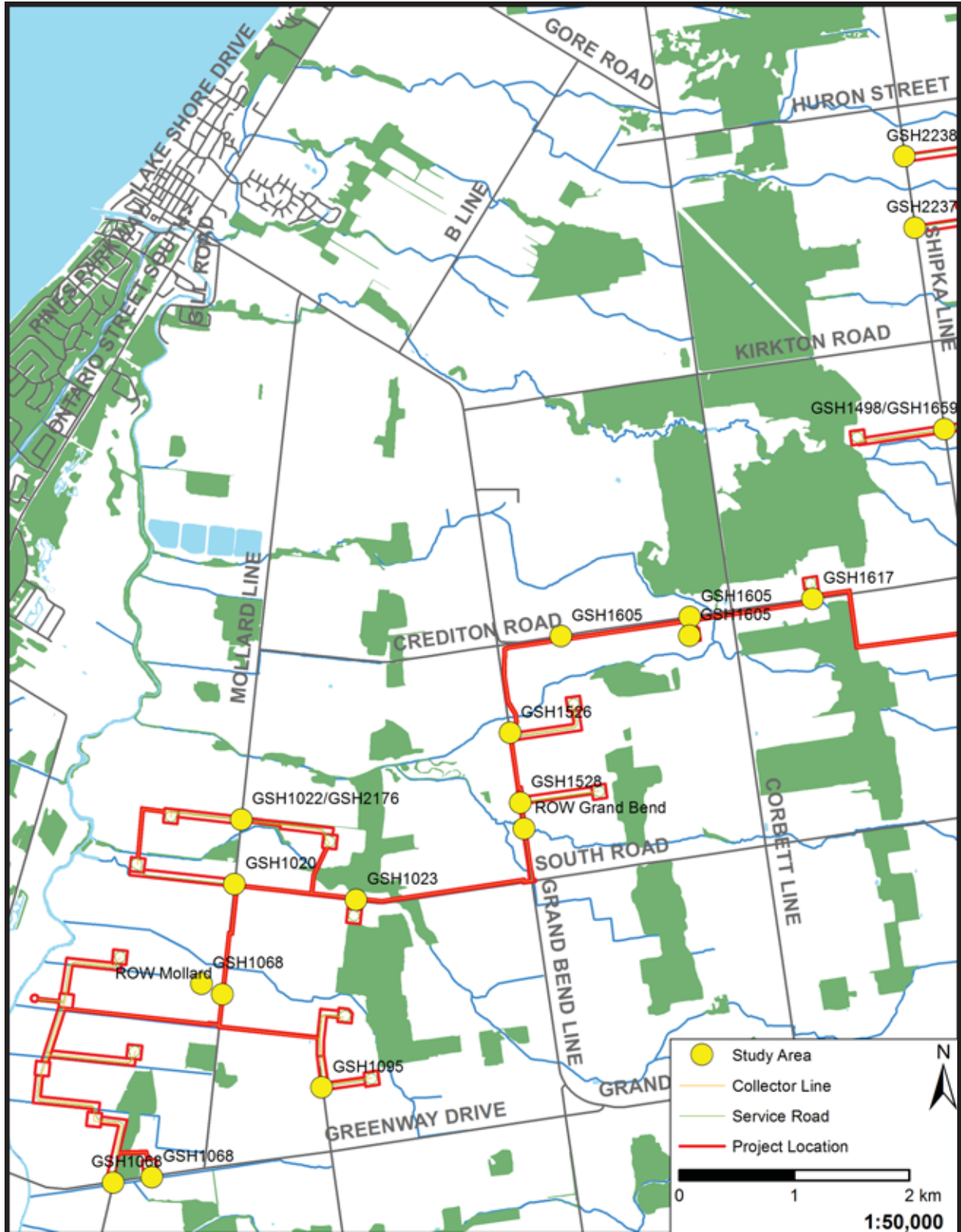
(1: Machine Made Bottle; 2: Enameled Label; 3: Plain Stoneware; 4: Northrop & Lyman Company;
5: Selkirk Chert Multi-Tool; 6: Plain Porcelaneous Ware; 7: Cut Nail)

6.0 MAPS

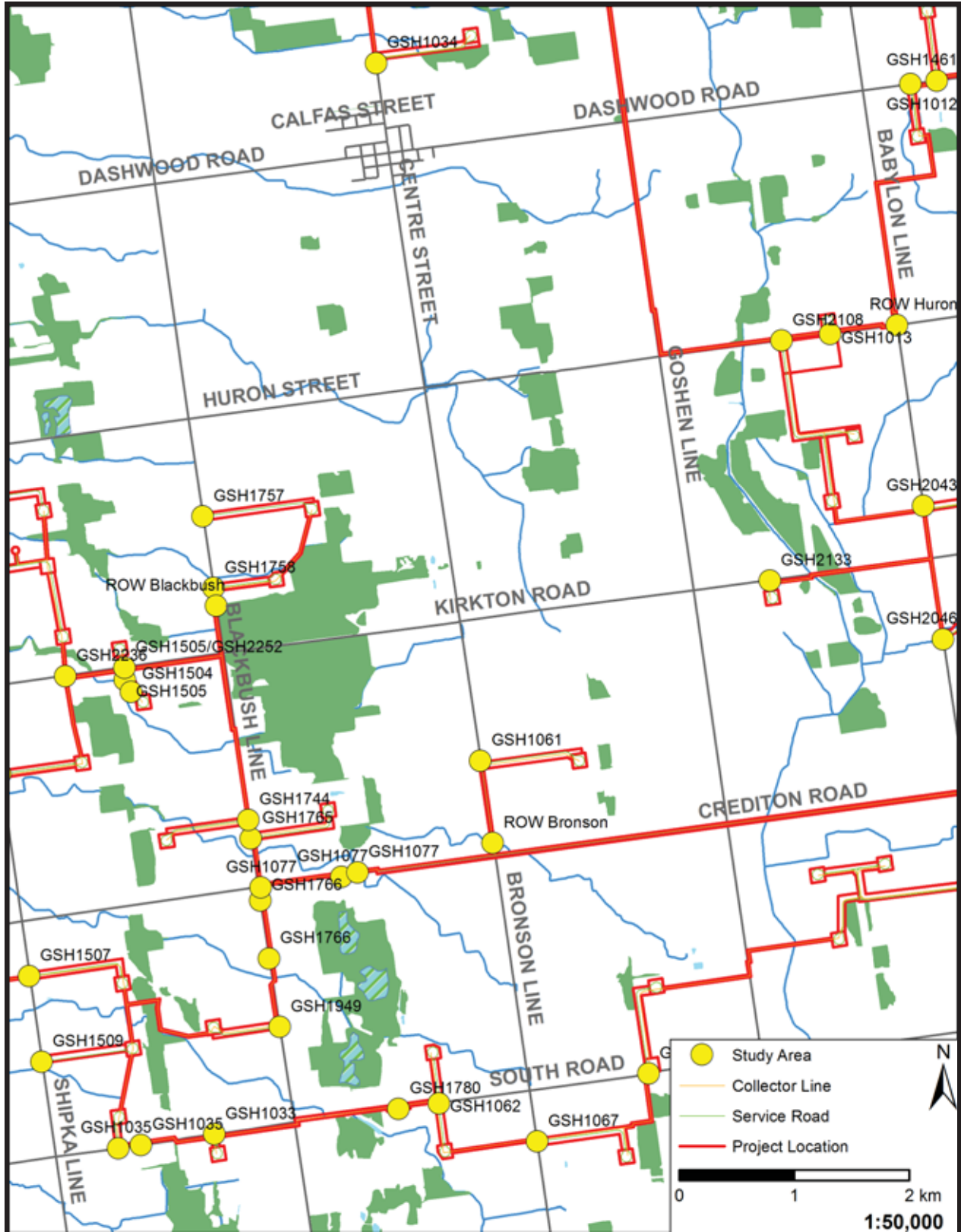


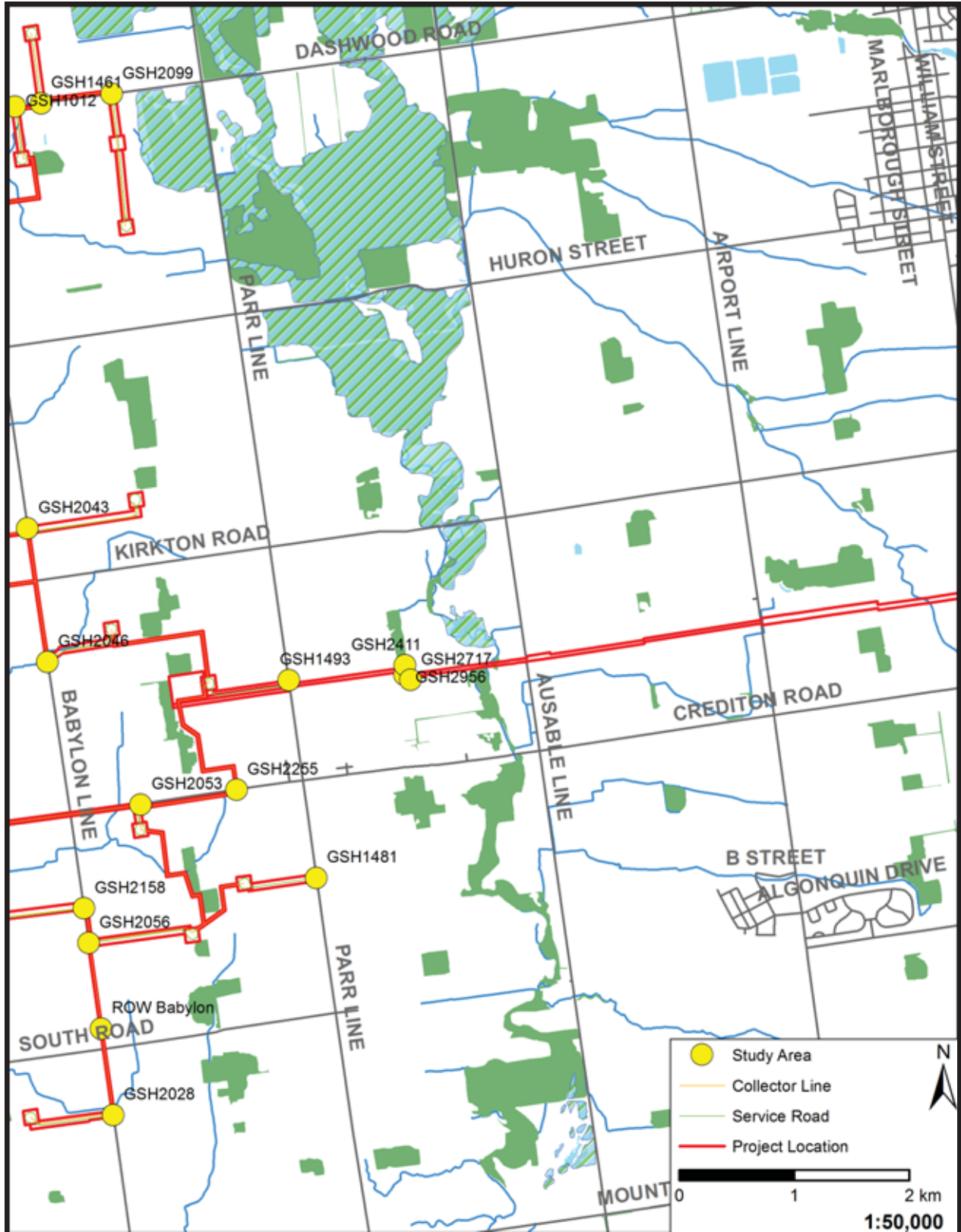
Map 1: Location of the Study Area in the Province of Ontario (NRC 2004)



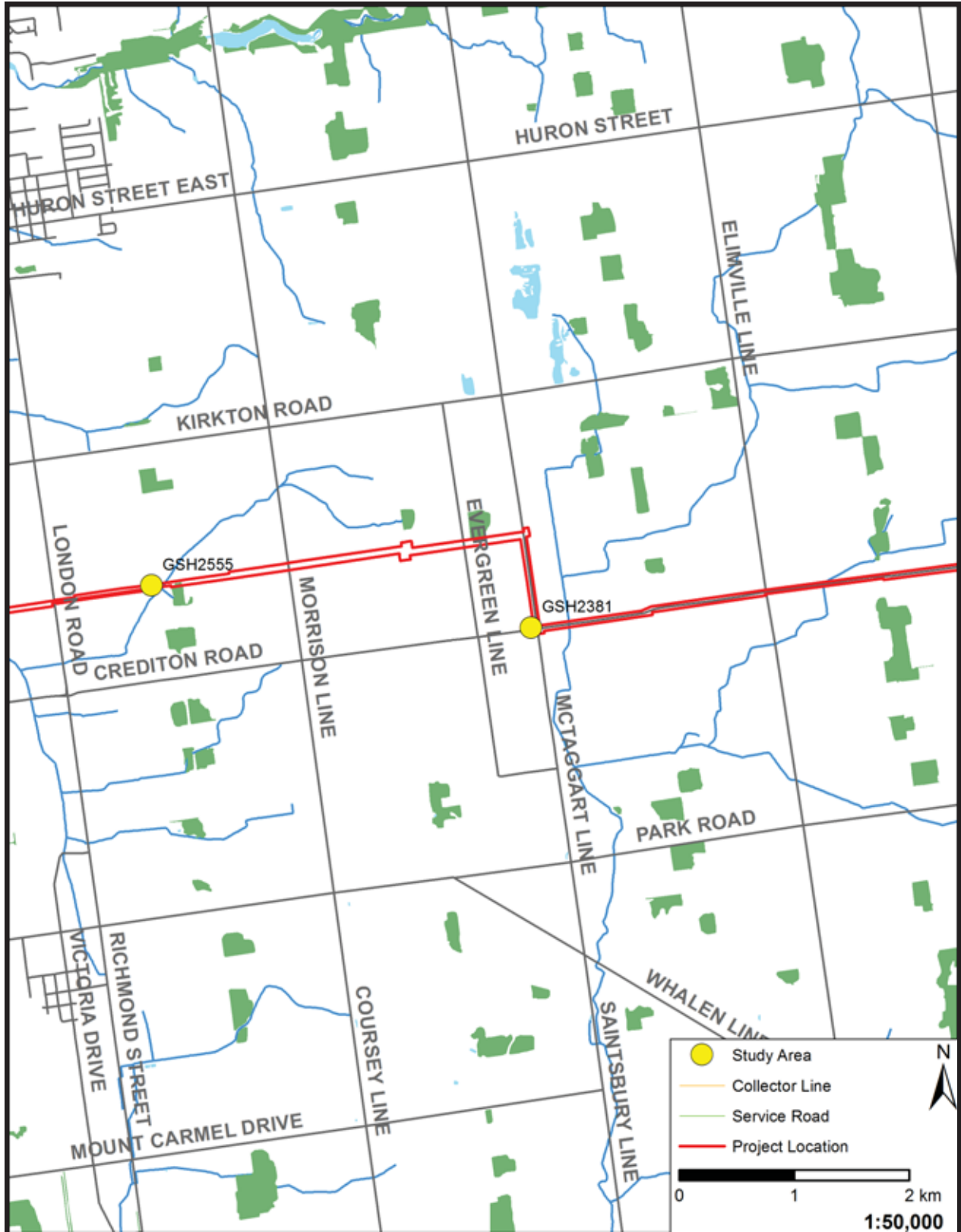


Map 3: View of the Southwestern Part of the Project Location
(Produced by ARA under licence from Ontario MNR, © Queens Printer 2013)

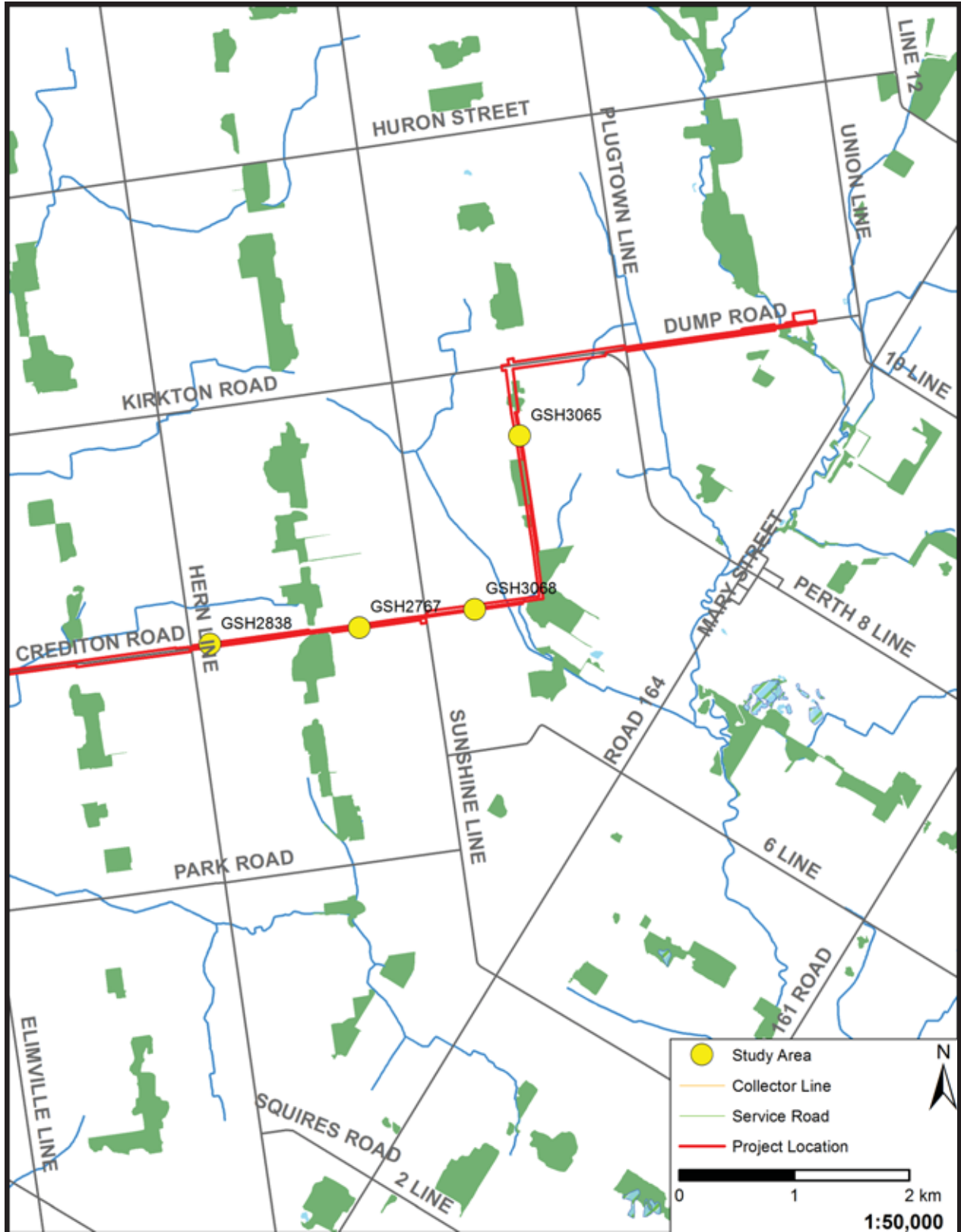




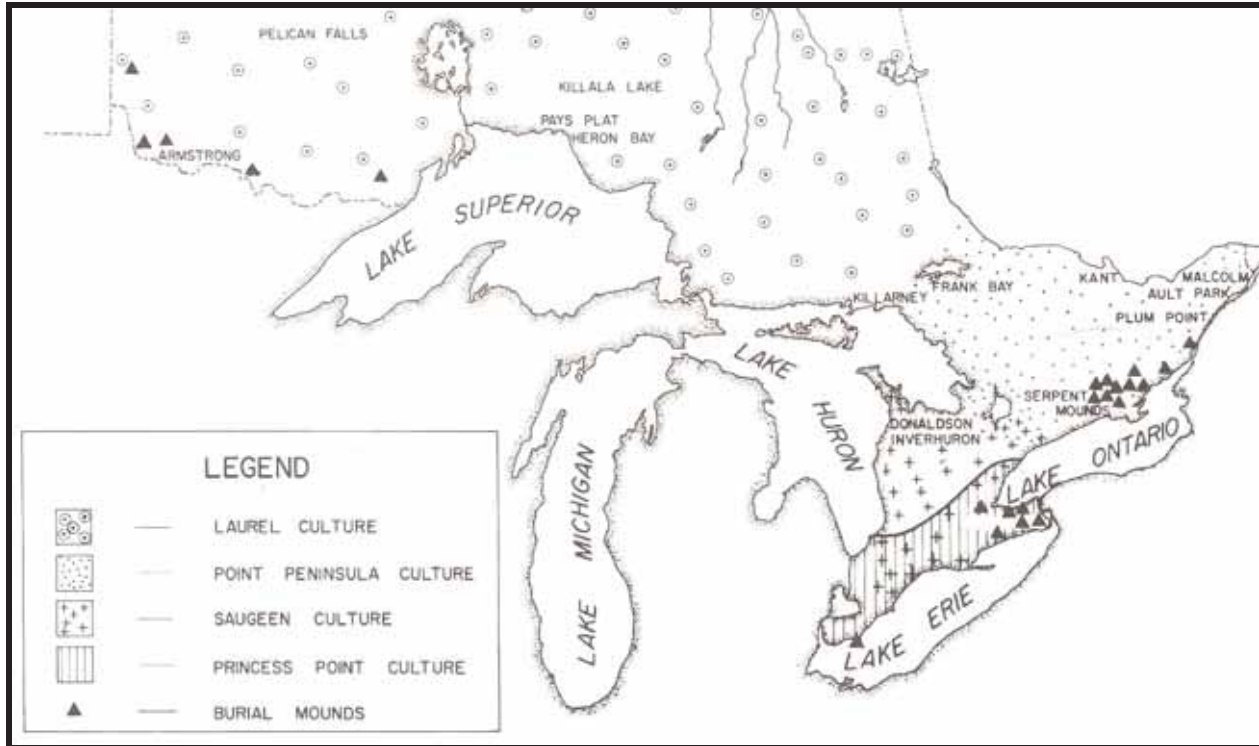
Map 5: View of the Central Part of the Project Location
(Produced by ARA under licence from Ontario MNR, © Queens Printer 2013)



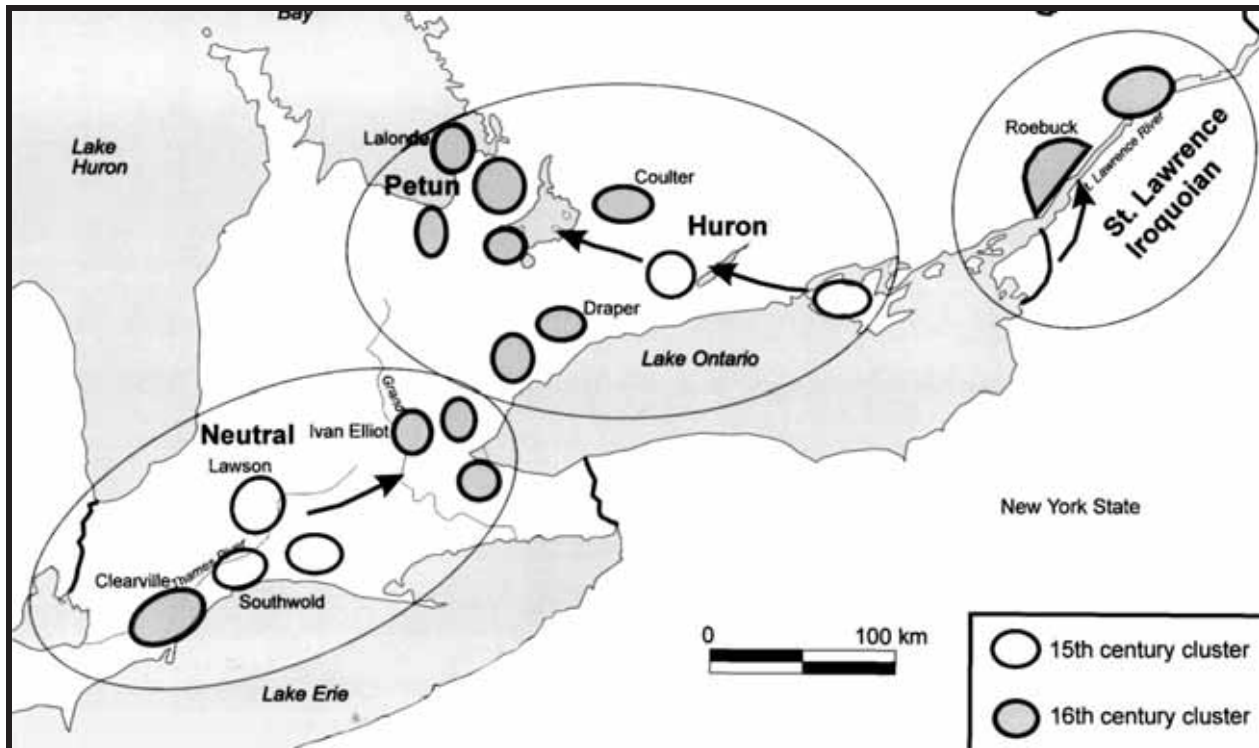
Map 6: View of the East-Central Part of the Project Location
(Produced by ARA under licence from Ontario MNR, © Queens Printer 2013)



Map 7: View of the Eastern Part of the Project Location
(Produced by ARA under licence from Ontario MNR, © Queens Printer 2013)



Map 8: Middle Woodland Period Complexes
(Wright 1972:Map 4)



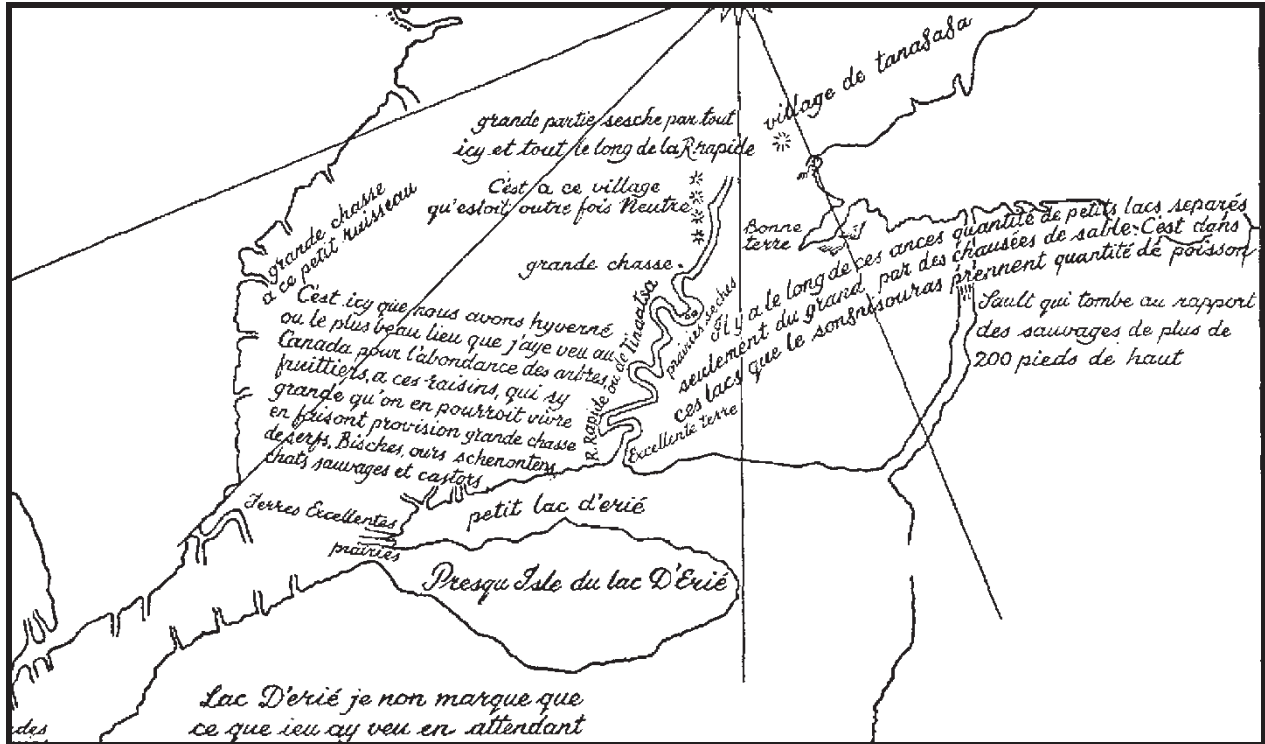
Map 9: Pre-Contact Iroquoian Site Clusters
(Warrick 2000:Figure 10)



Map 10: Detail from S. de Champlain's *Carte de la Nouvelle France* (1632)
(Gentilcore and Head 1984:Map 1.2)



Map 11: Detail from N. Sanson's *Le Canada, ou Nouvelle France* (1656)
(Gentilcore and Head 1984:Map 1.10)



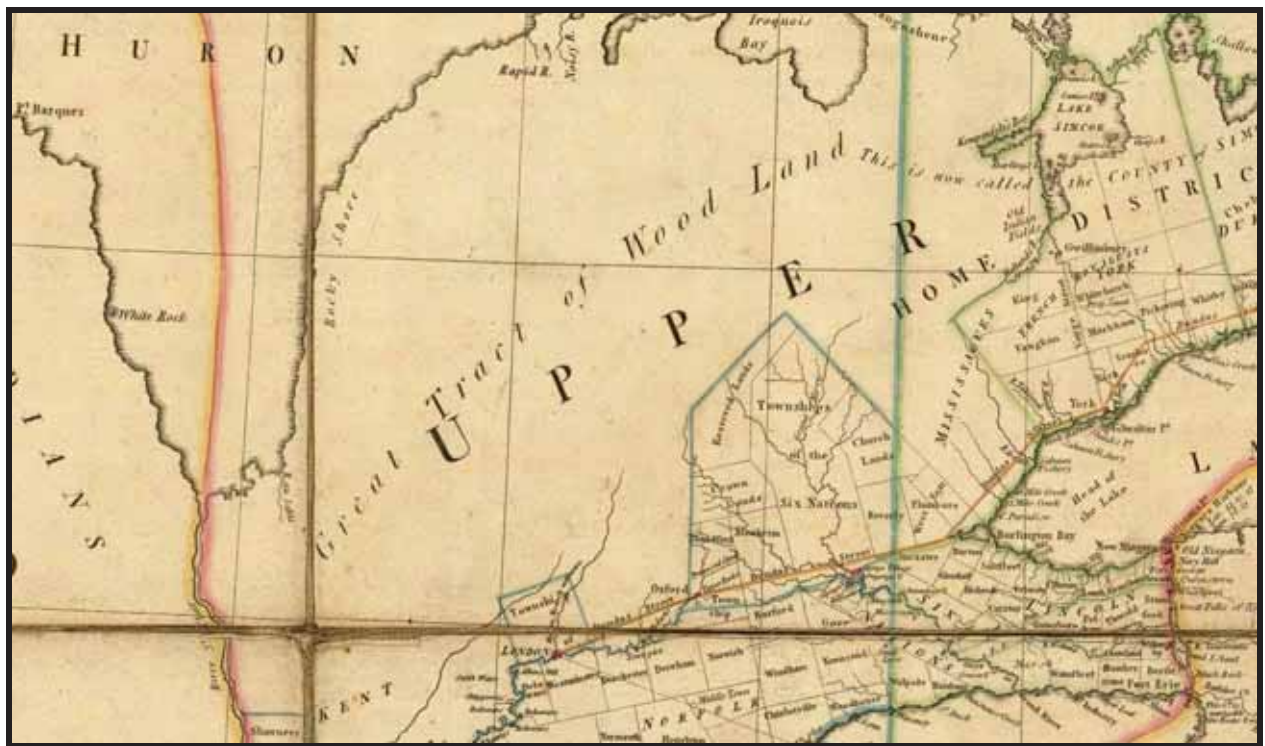
Map 12: Detail from the Map of Galinée's Voyage (1670)
(Lajeunesse 1960:Map 2)



Map 13: Detail from H. Popple's A Map of the British Empire in America (1733)
(Cartography Associates 2009)



**Map 14: Detail from R. Sayer and J. Bennett's *General Map of the Middle British Colonies in America* (1776)
(Cartography Associates 2009)**



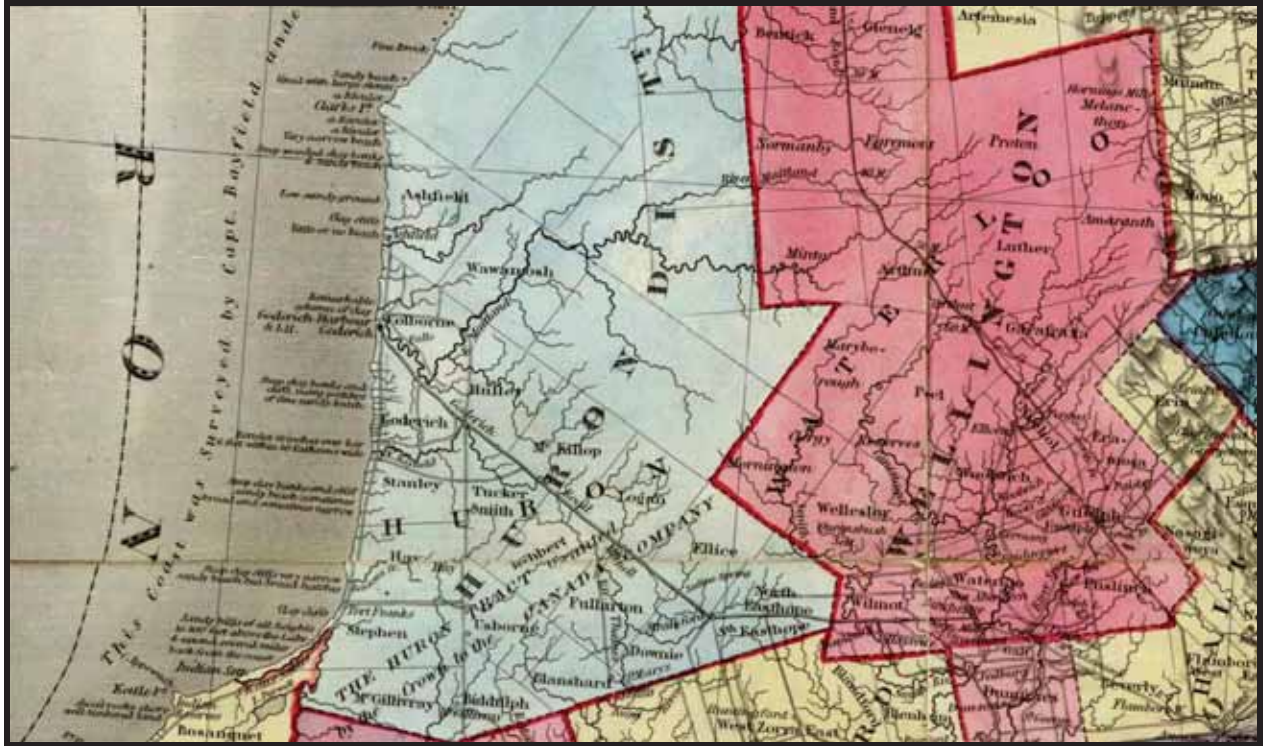
**Map 15: Detail from D.W. Smyth's *A Map of the Province of Upper Canada* (1800)
(Cartography Associates 2009)**



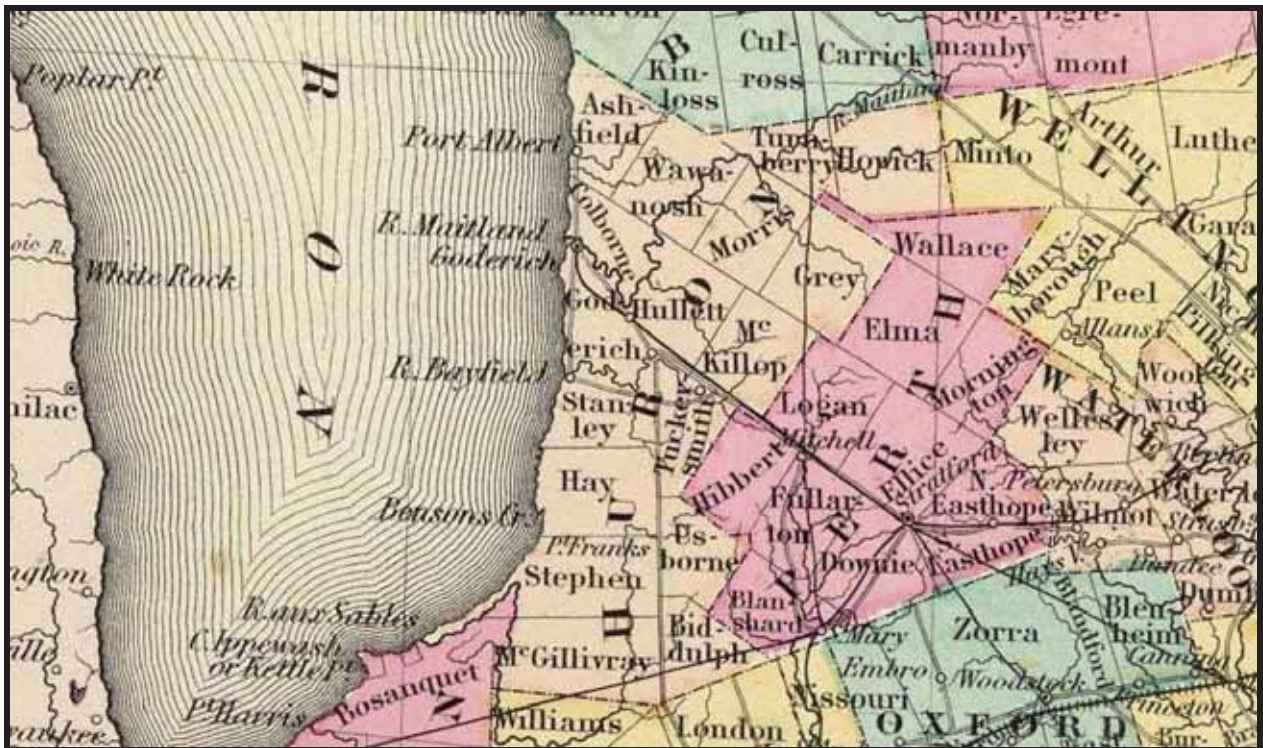
Map 16: Detail from J. Purdy's *A Map of Cabotia* (1814)
(Cartography Associates 2009)



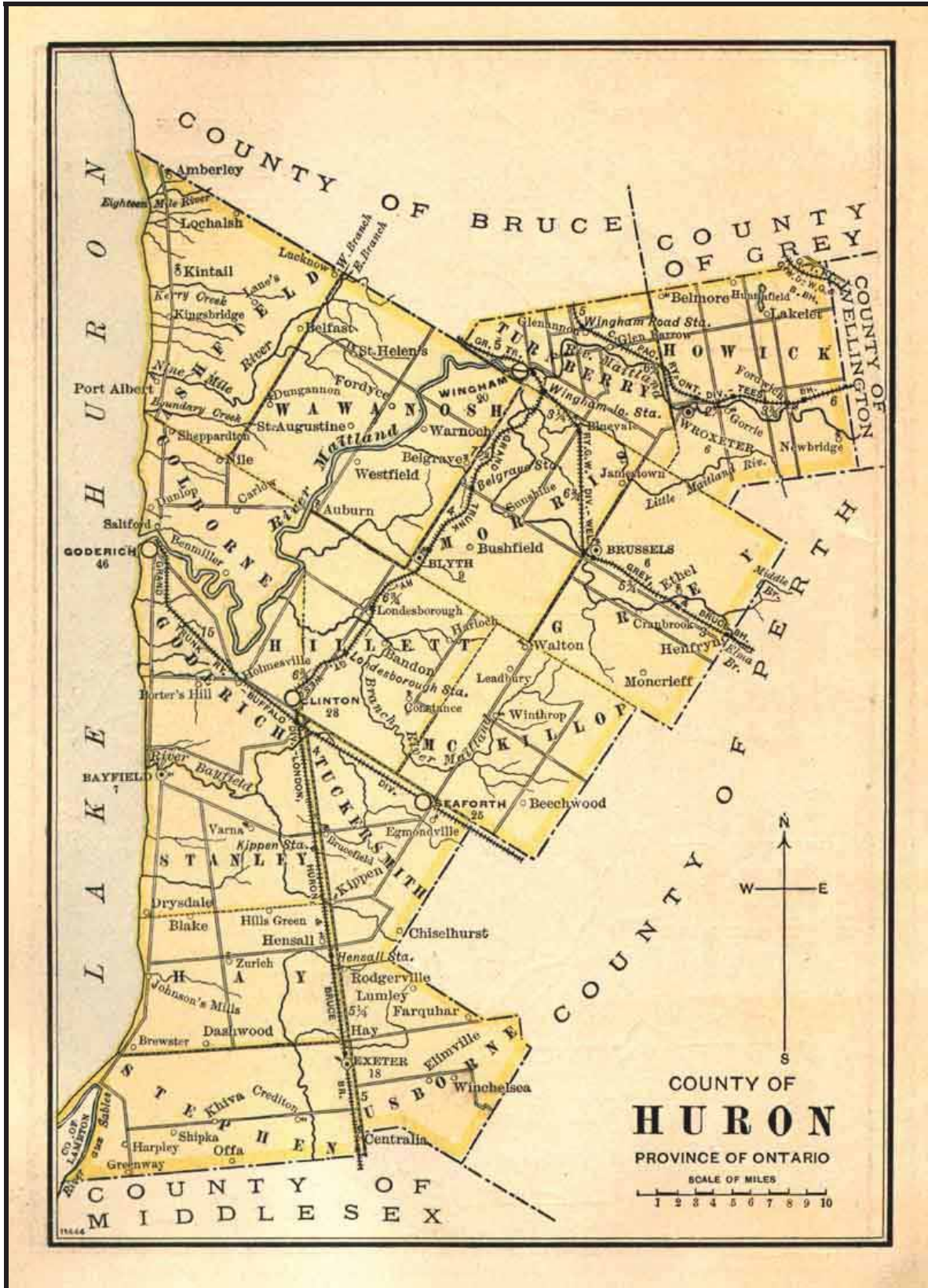
Map 17: Detail from J. Arrowsmith's *Upper Canada* (1837)
(Cartography Associates 2009)



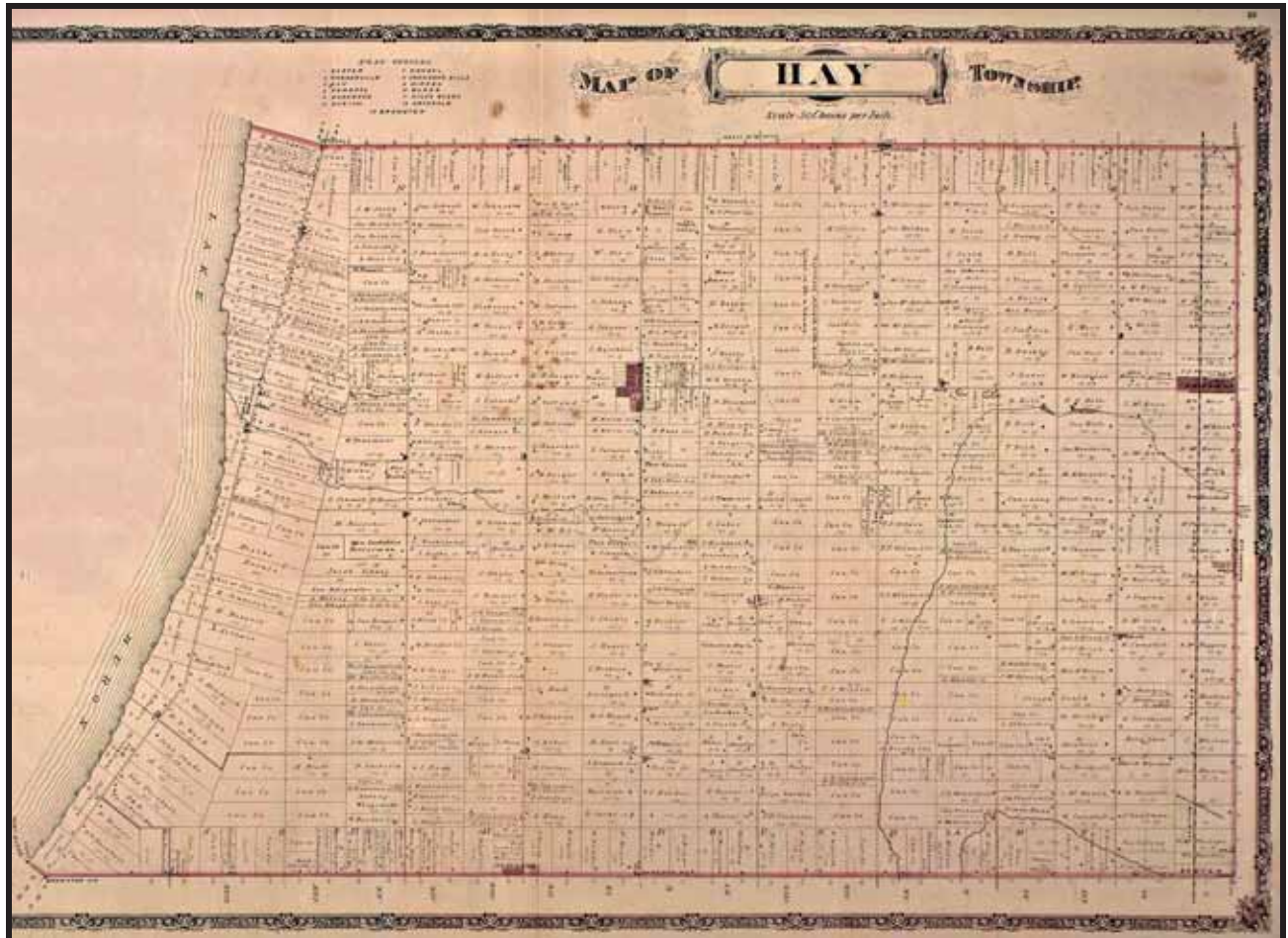
Map 18: Detail from J. Bouchette's *Map of the Provinces of Canada* (1846)
(Cartography Associates 2009)



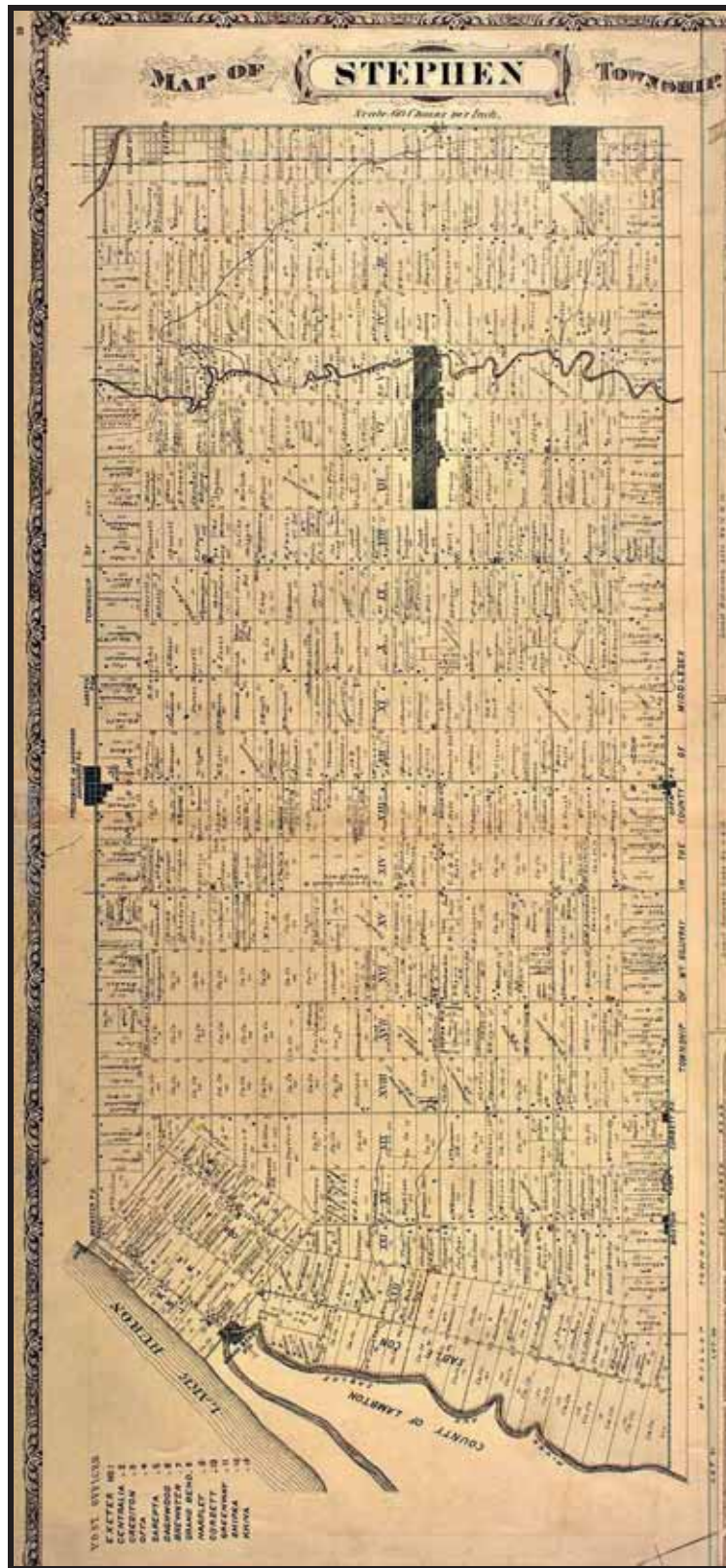
Map 19: Detail from G.W. Colton's *Canada West* (1856)
(Cartography Associates 2009)



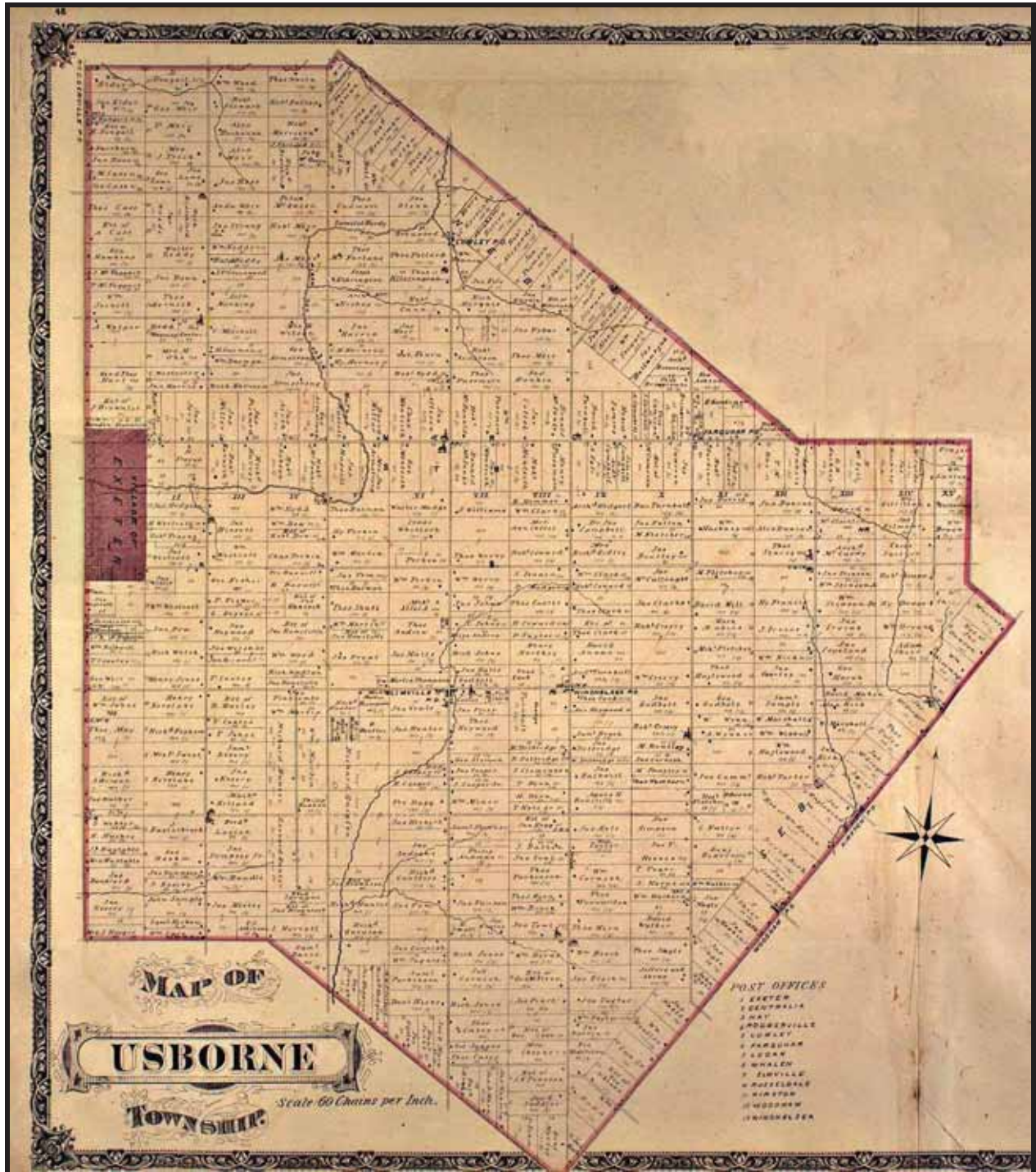
Map 20: Huron County from W.J. Gage and Co.'s *Gage's County Atlas* (1886)
(W.J. Gage and Co. 1886)



**Map 21: The Township of Hay from H. Belden & Co.'s *Illustrated Historical Atlas of the County of Huron* (1879)
(McGill University 2001)**



**Map 22: The Township of Stephen from H. Belden & Co.'s *Illustrated Historical Atlas of the County of Huron* (1879)
(McGill University 2001)**



Map 23: The Township of Usborne from H. Belden & Co.'s *Illustrated Historical Atlas of the County of Huron* (1879) (McGill University 2001)



Map 24: Detail of the Southern Part of the Township of Hay from H. Belden & Co.'s *Illustrated Historical Atlas of the County of Huron* (1879), Showing the Parcels (McGill University 2001)