

Appendix A9. Additional Public Comments



403 Canada Avenue
Huron Park, ON, N0M 1Y0

June 23, 2010

NextEra Energy Canada, ULC
5500 North Service Road, Suite 205
Burlington, ON L7L 6W6
Attn: Tom Bird
Environmental Services Project Manager
by e-mail 2010-06-24 and hand delivery 2010-06-30

Subject: Goshen Wind Energy Centre

Dear Mr. Bird,

The subject project is in very close proximity to Centralia-James T. Field Memorial Airport.

Transport Canada regulates aeronautics in accordance with the Aeronautics Act and the Canadian Aviation Regulations (CARs).

Transport Canada's role with respect to obstacles such as wind turbines is to assess them for lighting and marking in support of aviation safety.

Prior to construction of wind turbines/wind farms, Aeronautical Obstruction Clearance Forms should be submitted to Transport Canada for assessment of lighting and marking requirements in accordance with CAR 621.19 <http://www.tc.gc.ca/CivilAviation/Regserv/Affairs/cars/PART6/Standards/62119.htm> and the draft standards for wind farms which have recently been developed (copy attached). Please note that should these standards change after the wind turbines have been marked and lighted, it is the responsibility of the company to ensure that the marking and lighting meets any amended standards once promulgated.

Wind energy companies are also expected to contact aerodrome and airport operators and NAV CANADA prior to the construction of wind turbines to ascertain their aeronautical requirements as follows:

- Airports are certified aerodromes that must comply with the CARs, Part III, subpart II, and applicable certification standards. CARs Part III can be found at www.tc.gc.ca/CivilAviation/Regserv/Affairs/cars/Part3/menu.htm. Most airports are listed in the Canada Flight Supplement (CFS) with the operator's name and contact information. Wind energy companies should contact the airport operator to discuss applicable certification standards regarding proposed obstacles in the vicinity of the airport;
- Some airports have Airport Zoning Regulations (AZR), which are federally enacted regulations restricting the heights of buildings, structures, and objects on lands in the vicinity of the airport. Landowners and lessees on lands subject to AZR must comply with the height restrictions. The AZR are prepared by qualified land surveyors of Public Works and Government Services Canada and are available in local Land Titles and Registry Offices, the municipal planning department, and on the Transport Canada website at <http://www.tc.gc.ca/eng/acts-regulations/acts-1985ca-2.htm>. The means of determining compliance with the AZR is through the services of an Ontario Land Surveyor. Wind energy companies should contact the airport operator to discuss AZR and applicable certification standards;
- Aerodromes do not hold an airport certificate. However, aerodromes must comply with the CARs Part III, subpart I and some aerodromes maintain instrument approaches with reference to Aerodrome Safety Circular ASC 2003-019, which is available on the Transport Canada website at

www.tc.gc.ca/civilaviation/management/services/referencecentre/acs/300/301-001.htm. Some aerodromes have been registered and are published in the CFS with contact information. Wind energy companies should contact registered aerodrome operators to determine how a wind project would affect aerodrome operations. Aerodromes that are not registered in the CFS may not be known to Transport Canada, and wind energy companies should make every effort to investigate and make contact through appropriate means. Please note that for aerodromes, there is no regulated minimum distance or set back, and that is why the aerodrome operator needs to be contacted individually as each operation may be different.

- The construction of wind turbines may affect air navigation services and facilities provided by NAV CANADA. Wind energy companies should contact NAV CANADA Land Use Office at the following address: NAV CANADA Land Use Proposals Safety and Service Design 1601 Tom Roberts P.O. Box 9824, Stn. T Ottawa, ON K1G 6R2 613-248-4121.

Thank you for your interest in aviation safety.

Best regards,

Michael A. Hosang P.Eng.
Program Manager

cc: Blaine Field

Questions to Ask at the Public Open House on the Proposed Bluewater, Goshen, and Jericho Wind Power Project June 28-30, 2010

These questions are asked by [REDACTED] on behalf of the Bluewater Shoreline Residents' Association. [REDACTED]

1. What attempts will you make to minimize the noise of a) the turbines and b) the transformers?

NextEra Energy takes two primary steps to assure minimal sound impact on neighbours. First, each wind turbine manufacturer warranties that sound levels from its turbines will fall below set sound level restrictions so as to minimize sound reaching adjacent homes. Second, sound from a wind turbine diminishes over distance, and therefore NextEra Energy exercises great care to maintain adequate separation distance between wind turbines and homes. The Ontario government requires a minimum setback of 550m between a wind turbine and a residence that is not part of the project. NextEra Energy will ensure it meets, or in most cases, exceeds this requirement.

Deleted: neighbor
Formatted: Font: 12 pt
Deleted: neighbour

The Ontario Ministry of Environment's Noise Guidelines for Wind Farms establishes maximum permissible sound levels at residences of 40 decibels. This applies to both wind turbines and the substation transformer. These guidelines are consistent with the standards set forth by the United States Environmental Protection Agency and even lower than the thresholds for annoyance as recommended by the World Health Organization's report on community noise. For purposes of comparison, sound levels at or below 45 decibels are consistent with sound levels inside a typical home or residence, and far quieter than sound within the confines of a small office or even speech at a distance of 10 feet.

2. What will be the size of the turbines and from what country will you purchase them?

The turbines we are proposing to use in this project are about 80 meters tall – but they are also relatively slim. Generally each tower base is 8 meters across, and each turbine spaced at least 250 meters apart. Rows of turbines are set at least 1/2 kilometer apart, allowing for substantial space in between each tall, thin tower. In general, the entire wind farm, including towers, substation, and access roads, use about 5 percent of the allotted land. In rural settings, agricultural activities, such as farming and grazing, continue undisturbed on property where wind turbines are located.

Formatted: Font: 12 pt

Deleted: only

Comment [SJ1]: What is allotted land?

Deleted: only

NextEra Energy purchases state-of-the-art turbine technology from reputable manufacturers including GE and Siemens. Decisions about where components of turbines are sourced are made by the manufacturer, not by NextEra Energy. However, we will comply with all Domestic Content requirements for our wind projects. By 2012, a wind project will need to achieve 50 out of 100 points on the Domestic Content grid published by the Ontario Power Authority. A link to that grid is provided below. We are actively working with our suppliers to develop plans that will ensure we satisfy these requirements.

http://fit.powerauthority.on.ca/Page.asp?PageID=122&ContentID=10598&SiteNodeID=1054&BL_ExpandID=262

3. Will you abide by the set-backs established in the Bluewater By-law (passed in 2009)?

The Green Energy and Economy Act set out explicit setbacks that must be used to site all wind projects under the Renewable Energy Approval process and O.Reg. 359/09 established by the Ministry of Environment. These setback requirements supersede all previous municipal zoning by-laws relating to renewable energy. NextEra Energy Canada will meet, or exceed, the regulations set out in that legislation.

NextEra Energy Canada was actively involved in the process of development of the Bluewater By-Law. We closely followed the discussion and will consider these in our siting process.

4. How do you respond to the McMurtry statement and some European proposals that the minimum setback from all points of reception should be at least 2.0 or 2.5 kilometers?

The Government of Ontario regulates the setbacks for wind turbines and has determined that a minimum 550m setback is appropriate to protect public safety. As mentioned above, the actual setback distance is determined by compliance with sound level thresholds which often result in a setback of greater than 550m. We believe you are referring to a 2006 report from the French National Academy of Medicine which recommended that turbines over 2.5MW be sited at least 1.5km from the nearest residence. However, the French Ministries of Environment and Health reviewed this recommendation and conducted a follow up study that recommended modelling the sound impact of the project on a case-by-case basis rather than defining a fixed distance between wind farm sites and residential areas.

5. To what extent will the transmission lines be buried? At what cost?

It is our preference to bury collection lines, however, it is too early in our development process for these wind projects for us to comment on the collection system or of the facilities.

6. Will the leases signed with the land-owners require them to agree to (a) right of first refusal (b) assumption of liabilities (c) silence on these issues?

As per our discussion on June 28th, NextEra Energy Canada enters into easement agreements with landowners regarding all infrastructure related to our wind facilities. These are sensitive commercial agreements that we have refined over the last 20 years of doing business in the wind industry. The language in our 'option' and 'easement' agreements is valuable and this is the reason it is confidential. Landowners are given the opportunity to have the agreement reviewed by legal counsel of their choice prior to execution.

NextEra Energy Canada is solely responsible for anything related to the wind facility from a liability perspective including property taxes for the area of land occupied by our turbines, roads and collection system. Our responsibility is clearly described in our agreement with the landowner.

Regarding a 'right of first refusal', we would need clarification regarding the question before an answer can be provided. We are unable to determine what you are referring to.

7. What plans do you have for dealing with people who find they have to leave their nearby homes because the sound and vibration annoyance of the turbines affects their health or their ability to sleep at night? (This is happening in many locations in Ontario, the USA and around the world.

At NextEra Energy, we take any concerns related to our projects seriously. Much has been written about health effects and potential property value impact associated with wind turbines. We are not aware of any scientifically peer-reviewed information demonstrating a link between wind turbines and negative health effects, nor are we aware of any studies suggesting a negative impact to property values from wind turbines. New studies conducted on these two issues add to the body of evidence that neither of these concerns is founded.

Formatted: Font: 12 pt

In 2009, a scientific advisory panel was commissioned by the American and Canadian Wind Energy Associations to review currently available literature on perceived health effects of wind turbines.

The panel's top findings include:

- The sounds emitted by wind turbines are not unique. There is no reason to believe, based on the levels and frequencies of the sounds, that they could plausibly have direct adverse physiological effects.
- If sound levels from wind turbines were harmful, it would be impossible to live in a city given the sound levels normally present in urban environments.
- Sub-audible, low frequency sound and infrasound from wind turbines do not present a risk to human health.
- Some people may be annoyed at the presence of sound from wind turbines. Annoyance is not a pathological entity.

The turbines used by NextEra Energy Resources and NextEra Energy Canada feature "quietness warranties", assuring that sound levels will not exceed certain per-determined levels, and our wind farms are designed accordingly to assure that sound levels reaching residences do not reach levels that might be a cause for concern.

The design and operations plans for our wind facilities in Ontario will be made public during the Renewable Energy Approval process. These plans will include protocols for how any reports related to our facilities will be addressed. If someone has a concern, there will be a clear method for them to contact us, share their concern and have us respond.

8. Are you aware that the settlement area along the lakeshore in Bluewater is made up of more than 1300 residences of which more than 25% are year-round homes?

Yes. NextEra Energy Canada, along with [Canadian Green Power \(our partner on the Bluewater, Goshen and Jericho projects\)](#), has been active in Huron and Lambton Counties for the last 4 years.

Deleted: .

Formatted: Indent: Left: 0.5"

Deleted: Canadian Green Power

Deleted: .

9. Since the affected area is on a major migration route, what are the results of your studies on migrating birds and bats?

Our avian and bat studies are currently underway. When completed late this fall, we will have conducted winter bird surveys, spring migratory bird surveys, breeding bird surveys, and fall migratory bird surveys. The purpose of the surveys is to understand the species present and areas of activity so we can minimize any potential interference by our wind farm operations. Similarly, we are currently conducting a bat monitoring program. The results of our surveys will be available for public review for 60 days before our next open house meeting. As part of our Renewable Energy Approval application, the Ministry of Natural Resources will be reviewing our studies to ensure they meet with their approval. The avian and bat surveys are carried out and reported on by experts in their fields.

Wind sites have a low impact on birds. In the U.S. it is estimated that wind turbines nationwide account for about 30,000 bird fatalities a year. Birds face a much higher degree of risk from other sources:

- Buildings and windows -- up to 980 million
- House cats -- up to 100 million
- Vehicles -- up to 80 million
- Pesticides -- up to 67 million
- Communication towers -- up to 50 million

(Source: National Wind Coordinating Committee and Western Ecosystems Technology Inc.)

In our commitment to wildlife protection, we have:

- Established technical review committees to monitor and address avian issues
- Implemented post-construction studies to gather more information on the effects of wind on wildlife
- Become a funding member of the Bat and Wind Energy Cooperative (BWEC). Others in this group include the American Wind Energy Association, Bat Conservation International, the Department of Energy National Renewable Energy Laboratory and the U.S. Fish and Wildlife Service. The goal of this collaborative effort is to study impacts of wind turbines on bat species.

10. What is the lowest price per kWh at which the wind farms could be profitable?

The commercial success of a wind project depends on many variables including the strength of the wind resource, the cost of the equipment and commodities in general and the revenue received for the electricity generation. Given the wide range of possible configurations of a wind farm including size, technology and location, it is impossible to provide a blanket answer to this question.

Recent procurement initiatives for wind energy in [provincial jurisdictions across Canada](#) have resulted in price ranges from \$0.10/kWh to \$0.15/kWh, depending on whether payment for the environmental attributes are included in the energy price.

11. Your website says that you sponsor local events. What local events are you planning for Bluewater? What ongoing attempts will the corporation make to stay in touch with the local people who will be affected by the wind farms?

NextEra Energy Canada is committed to being involved in the communities in which our facilities are located. After all, our employees live and work there. It's important to them, and our company, that we are good neighbours. From project development through operations, we engage landowners, local residents, community leaders and businesses.

Once the wind energy centre is operational, we will publish a phone number to the Operations and Maintenance Center and ensure the local landowners and neighbours have this contact information.

We have supported the annual Autumn Indulgence fundraiser for the Grand Bend Rotary Club for the last several years and welcome other opportunities to engage with local communities as our investment and presence in the area solidifies.

- Deleted:
- Deleted: be
- Deleted: neighbors
- Comment [S12]: I'm not sure what this refers to. I would consider deleting it.
- Deleted: We seek to improve the quality of life and achieve mutual respect and trust.†
- Formatted: Font: 12 pt
- Deleted: neighbors

12. What can be done to mitigate the long term negative effect on property values in the agricultural, the lakeshore residential, and the village areas near the wind farms?

We have universally found that our wind farms have a positive impact on the future economic development of an area, increasing the economic base of the community through additional tax revenue, new construction jobs and full-time permanent jobs once the plant is operational. Income to local businesses, including motels, caterers, office supply companies, construction firms, rental companies and others, also add to the economic development of the local area. Furthermore, wind farms increase the economic return on agricultural operations in the area, preserving traditional land use.

- Formatted: Font: 12 pt
- Formatted: Font: (Default) Times New Roman, 12 pt

Owen, Jennifer

Subject: FW: Goshen Wind Energy Centre

-----Original Message-----

From: BIRD, THOMAS
Sent: Friday, August 13, 2010 9:48 AM
To: [REDACTED]
Cc: [REDACTED]
Subject: RE: Goshen Wind Energy Centre

[REDACTED]

I am contacting you again because I think it might be beneficial to talk about this in person. It's not clear to me what you are inferring when you mention other motives. I'd be happy to arrange a time within the next month or so to discuss our studies and our siting process. Would this be something you are interested in? Please let me know.

Best,
Tom

Tom Bird | Environmental Services Project Manager NextEra Energy Canada, ULC
5500 North Service Road, Suite 205, Burlington, ON L7L 6W6
905.335.4904 x15
thomas.bird@nexteraenergy.com
P Please consider the environment before printing this e-mail. Thank you

-----Original Message-----

From: [REDACTED]
Sent: Wednesday, June 30, 2010 3:50 PM
To: BIRD, THOMAS
Cc: [REDACTED]
Subject: RE: Goshen Wind Energy Centre

Hi Tom:

That's fine, but does not answer my question as to why your study area for this project is so close to the natural shoreline. Sounds like you have some other motives that are not as visible with respect to this particular project, if you are willing to do studies for your other two that respect the significance of shoreline protection and not encroach so close. This is how mistrust and opposition can build and grow.

[REDACTED]

>>> "BIRD, THOMAS" <THOMAS.BIRD@nexteraenergy.com> 2010/06/30 03:00 PM
>>>
Hello,

Please note that in March 2010, the MNR released the second edition of the Natural Heritage Reference Manual, which replaces the earlier 1999 version from which the Significant Wildlife Habitat Technical Guide, 2000 was based. We have been in consultation with the MNR regarding the new manual and related expectations and we are ensuring we conduct all the required field studies for our projects. Through ongoing consultation with the MNR, we will ensure we meet or exceed the requirements for siting our project.

Regards,

Tom Bird | Environmental Services Project Manager NextEra Energy Canada, ULC
5500 North Service Road, Suite 205, Burlington, ON L7L 6W6
905.335.4904 x15
thomas.bird@nexteraenergy.com
P Please consider the environment before printing this e-mail. Thank you

-----Original Message-----

From: [REDACTED]
Sent: Wednesday, June 30, 2010 12:27 PM
To: BIRD, THOMAS
Cc: [REDACTED]
Subject: RE: Goshen Wind Energy Centre

Hi:

Thank you, but Highway 21 does encroach less than 1 km to the shoreline in some areas and as such is an inappropriate western limit to your study area given the MNR guidelines of 5 km. I would expect that this be respected, as it appears to have been for the other two projects you are proposing.

Regards,

[REDACTED]

^^

[REDACTED]

>>> "BIRD, THOMAS" <THOMAS.BIRD@nexteraenergy.com> 2010/06/30 12:06 PM

>>>
Hello [REDACTED],

I am sorry you were not able to make it to our open house event. I would like to clarify that our project boundary does not extend to the Lake Huron shoreline. The project is bounded to the west by Highway 21.

We had a larger more detailed map at the open house that showed this more clearly than perhaps was shown in the newspaper notice. I could send you a copy of this map by email, but it is quite large (2MB) or I

could send it by mail if you prefer.

Regarding your comments about seasonal concentrations of wildlife and bat hibernacula, we are currently conducting studies to better understand the extent and locations of the activities of seasonal wildlife and bats. Our avian studies will cover a full year of surveying for migratory, winter and breeding birds and we are currently conducting investigations to determine the locations of bat hibernacula and maternity roosts. All of our field investigations are done to satisfy the Ministry of Natural Resources guidelines. The Ministry of Natural Resources is an approving agency for this project and so will be reviewing all of our studies.

Please feel free to contact me again if you have any further questions about our project.

Best regards,

Tom Bird | Environmental Services Project Manager
NextEra Energy Canada, ULC
5500 North Service Road, Suite 205, Burlington, ON L7L 6W6
905.335.4904 x15
thomas.bird@nexteraenergy.com
P Please consider the environment before printing this e-mail. Thank you

-----Original Message-----

From: Kirton, Jennifer On Behalf Of SharedMailbox, GOSHEN-WIND
Sent: Wednesday, June 30, 2010 11:38 AM
To: BIRD, THOMAS
Cc: GENEAU, NICOLE; Hernandez, Joselen
Subject: FW: Goshen Wind Energy Centre

-----Original Message-----

From: [REDACTED]
Sent: Wednesday, June 30, 2010 11:22 AM
To: SharedMailbox, GOSHEN-WIND
Cc: [REDACTED]
Subject: Goshen Wind Energy Centre

Hi:

As owner of a property within the study area identified on the notices for this project, and being unable to attend the public meeting held recently, I would like to understand why the study area map extends to the shoreline of Lake Huron for this project. The other two projects proposed by Nextera do not extend to the shoreline.

Specific reference to sensitive areas is identified in the document "Significant Wildlife Habitat Technical Guide", Ontario Ministry of Natural Resources, October 2000. In Table 10.5 of this guide,

"Primary

Locations of seasonal concentrations of wildlife",
landbird/shorebird/butterfly migratory stopover areas are defined as
great lakes shorelines and adjacent lands within 5 km. I would expect
that the Goshen Wind Energy Centre Project should respect this
criteria
in order to protect these species.

Also indicated in the guideline is the need for preservation of bat
hibernacula, specifically forested areas where undisturbed habitat is
essential. Suitable studies should be completed to identify bat
hibernacula and efforts made to keep these areas undisturbed.

Thank you for the opportunity to comment, and I look forward to a
response.

Regards,



^^^^^^^^^^^^^^^^^^^^^^^^^^^^^^^^^^^^



^^^^^^^^^^^^^^^^^^^^^^^^^^^^^^^^^^^^

The information transmitted is intended only for the person or entity
to which it is addressed and may contain confidential and/or
privileged
material. Any review, retransmission, dissemination or other use of,
or
taking of any action in reliance upon, this information by persons or
entities other than the intended recipient is prohibited. If you
received this in error, please contact the sender and delete the
material from any computer.

The information transmitted is intended only for the person or entity
to

From: [Hernandez, Joselen](#) on behalf of [SharedMailbox, GOSHEN-WIND](#)
To: [Dudek, Derek](#)
Cc: [Geneau, Nicole](#)
Subject: FW: Contact Us
Date: Friday, May 25, 2012 11:04:31 AM

-----Original Message-----

From:
Sent: Friday, May 25, 2012 10:50 AM
To: SharedMailbox, GOSHEN-WIND
Subject: Contact Us

Below is the result of your feedback form. It was submitted by
() on Friday, May 25, 2012 at 10:50:22

name: [REDACTED]

emailAddress: [REDACTED]

phoneAreaCode: [REDACTED]

phoneNumber1: [REDACTED]

phoneNumber2:

comments: Are the turbines which you hope to plant in South Huron new or have they been dismantled
someplace and intend to be reassembled here?

Submit1: Submit Form

Attendees: Tom Bird (NextEra - Project Manager, Environmental Services), Josie Hernandez (NextEra - Media Relations), [REDACTED] (BSRA – President), [REDACTED] (BSRA – Treasurer), [REDACTED] (BSRA - Past President), Jeremy Shute (AECOM – REA consultant to NextEra).

- A meeting agenda was outlined and agreed upon
 - Sit down meeting to focus on responses to follow-up questions initially posed by the BSRA and sent to NextEra
 - Tour of the local area by car
- There was general discussion about the new provincial permitting process and changes from previous processes
- NextEra does not have a contract for the project at this point. The contract process was described. NextEra will probably know in XXX if a contract for the project has been awarded.
- The REA (Renewable Energy Approvals) process for NextEra's projects will be continuing for a while. There will be more opportunities to continue this discussion.
- Question #2 [from follow-up question document] - discussion about noise
 - 2 km setback from Lake Huron (or from Highway 21?) was initially recommended by Bluewater Council
 - BSRA would like NextEra to respect that same setback request
 - Discussion of the current provincial established 550 m setback
 - BSRA would like setback distances to be measured from settlement areas – concentrations of people rather than single houses
 - Where did 2 km setback come from?
 - Comes from a French recommendation that suggestions 2 km
 - Follow up studies were done in France and set back process was changed from a distance based to sound based set back
 - The personal experience of people in the area and as reported in the local media suggests that 2 km is a good set back distance
 - A 2 km from the water is the starting point that BSRA residents would be comfortable with
 - The BSRA comprises about 1300 properties, 3500 people in a 21 km swath east of Highway 21 north of Grand Bend. A map of the BSRA communities was shared. [REDACTED] [REDACTED] writes a newsletter for BSRA.
 - The BSRA has been hearing from the community:
 - An “uproar” about distance and setbacks
 - That the mood is changing locally among farmers
 - Offshore wind proposals are of great concern
 - The Province does not prescribe setbacks to settlements (concentrations of people), but to individual homes

- NextEra has observed a voluntary set back from the lakeshore for ecological reasons and because of the human activity along water
 - On NextEra's project maps, the Bluewater project is further from water than is the Goshen project
 - Accordingly, people adjacent to the Goshen project area are more concerned about the setback distance
 - There was discussion about the nature of a study area and how it was determined
 - BSRA shared a map of wind development constraints developed by County Planning
 - The constraint process NextEra is undertaking seems quite similar with setbacks from wetlands, woodlots, commercial towers, houses and roads
 - Are turbines going to affect wireless internet?
 - there are communication-based regulations that NextEra must follow that address wireless internet services
 - Tucker-Smith and Hay Communications are the local internet service providers
 - Tom Bird is going to contact them
- Does the company go back to survey communities on their views/concerns after a project is completed?
 - Official surveys are not completed
 - It is important for NextEra to know if issues are developing locally – both good and bad - so that they can be addressed.
 - NextEra typically established a local office and through this office has people active in the community. This provides an opportunity to get unofficial feedback from the community.
 - Local people are constantly in communication with company through ongoing maintenance and operations staff. This provides NextEra with an opportunity to determine if there are issues of concern in the community.
- BSRA would like to see money generated from the projects going back into community
- BSRA would like the local ecology and environment to be maintained as it is
- There was a general discussion about rising energy costs and the BSRA's concern that coal-fired generating plants are not going to be shut down due to the generation of wind power.
 - The book "Power Hungry: The Myths of "Green" Energy and the Real Fuels of the Future" by Robert Bryce describes these concerns in detail.
- It would helpful for NextEra to receive scientific reports or studies that document, describe and analyze the types of concerns people have. NextEra is often in the position of discussing reports that are being described second-hand without the benefit of seeing the original studies.
- Property taxes are very high locally along Lake Huron
 - There are concerns that properties will be devalued because of wind energy development
 - People concerned about being able to sell their properties – there is a lot of money tied up in property

- There is a danger of stories about property values decreasing and health effects, whether they are true or not, affecting peoples perspectives and becoming a self-fulfilling prophecies
- Question #6 [from follow-up question document] – discussion about leases
 - Lease questions are mostly of interest to people inland, not along the lake
 - Because leases are confidential, the general public is not sure what is in them and is worried about what they contain
 - One issue that has been raised is that wind companies have the first right of refusal on sale of the farms where they have leases. This has led to concern that people will be losing their farm land to wind energy corporations over time and that these corporations will end up owning huge agricultural areas throughout the area
 - NextEra is not in the farming business, and is not interested in buying and owning farm land. They do not have a right of first refusal for the sale of farms in their leases.
 - Another concern that has been raised by area community organizations is about whether liability for potential problems relate to property owner or to the wind energy company
 - NextEra is responsible for liabilities associated with their turbines
 - NextEra provides funding for land owners (leaseholders) to take the leases to their own lawyers
 - What happens if a turbine doesn't produce as much as it is supposed to?
 - NextEra will try to fix any problems with a turbine if one emerges
 - Projects are measured as a whole at the point where they connect to the grid
 - Wind modeling is done in advance of project design to determine if the project is viable
 - The question of rated capacity vs. real production was raised
 - Capacity concerns may be based on a misnomer. NextEra does not base predicted production solely on the name plate capacity, but on a set of factors, including experience from other projects.
 - Some discussion about the time of maximum energy production
 - It may be between 9 PM – 2 AM
 - NextEra will receive an overall price per kW, which is not based on time of day of production
 - Some members of the BSRA have come to the position that the net effect from producing power by wind will have no affect on global warming
 - There will be a mix of energy sources in the future energy supply in Ontario, wind energy will be a part of this mix
 - The suggestions was made that wind is here to stay, let's work together and continue to talk about it
- Question #7 [from follow-up question document] – discussion about health
 - BSRA has heard of people being annoyed so much that they are getting health effects

- A concern was expressed that the definition of health in wind energy sector's health reports is dismissive of people's real concerns. BSRA took exception to the phrase "Annoyance is not a pathological entity"
 - NextEra will not dismiss people's concerns. NextEra going to be here for a long time if project goes ahead. Although NextEra does not have any operating wind energy centres in Ontario, they do have extensive experience with wind energy centres across the US. The Ontario regulations are much newer than NextEra's experience.
- A note of clarification – the Bluewater Municipal Bylaw ended up at with setbacks at 1 km east of Highway 21
- Question #2 [from follow-up question document] – employment opportunities
 - Concern that there will be very few local permanent jobs
 - Estimate of 4-6 jobs / project
 - The permanent jobs may require some specialized skills
 - Facility management, technical, maintenance
 - Tom Bird is going to find out about what specific qualifications will be called for and will share that information with the BSRA
 - NextEra is working with technical schools in Texas to prepare graduates for employment in the industry
 - This may start happening at local colleges in Ontario as the wind energy industry develops
- Are there other areas where NextEra has wind facilities where there are similar habitation patterns, with dense 80/100 acres parcels?
 - There are unique aspects of the Ontario landscape.
 - Josie Hernandez will look into the land use patterns in American states where NextEra is currently operating and will follow up with the BSRA
 - It was suggested that the NextEra website might have information on other project areas
- It was reported that no more land based turbines are going to be erected in Denmark
 - The Danish wind model is being shut down
 - An article from the National Post was discussed ""Danes bow to wind power blowback" – by Andrew Gilligan
- There was discussion about the turbine layout for the Bluewater, Goshen and Jericho wind energy centres
 - A layout has not been developed at this point
 - Constraints mapping is being prepared currently, then models will be run to determine turbine locations
 - Usually the maximum number of turbines is stated in a project description and then they work backwards once the constraints have been identified
 - Likely going to be fewer turbines than originally proposed
- There was a discussion of Tundra Swans and migration routes

- One can hear the swans, all the way to the Cedarbank subdivision, when they stop in this area in the spring time
- They travel up the lakeshore and then across the lake about between the 3rd week of March and the 3rd week of April
- They end up in Lake Winnipeg and then go on to the arctic, starting in Chesapeake Bay
- There are also millions of ducks and monarch butterflies that migrate along this route
 - ██████'s son is an ornithologist and has studied that flight path
- NextEra has a company doing bird studies – the report should be complete in late November
- Reports will be finalized in January.
- Tom Bird will send BSRA a copy of the report when it is complete
- NextEra's consultants will be meeting with representatives from the Lake Smith Marsh Project to learn more about the tundra swan migration
- BSRA was appreciative that NextEra participated in the meeting. Although they are not happy about the project they appreciate the opportunity to discuss their point of view and talk about their concerns. People's hearts and investments are here and they are concerned about the local environment.
 - BSRA – 54 subdivisions
 - Each has a local organization
 - Roads maintained locally and paid for by members
 - The 54 groups have formed a federation-umbrella – the BSRA
 - 8 person board elected annually
 - ██████ was on board for 6 years and is stepping back
 - ██████ is now the President ██████ is treasurer
 - Water quality, sewage and taxes are big issues
 - A BSRA members goes to all local council meetings
- NextEra was also appreciative of the opportunity to have good dialogue about their wind energy projects and hopes to continue discussions with the BSRA
- There was some discussion about what other local groups or people NextEra should meet with

After the formal meeting, all participants except ██████ did a tour of the area. The local environment and geography was discussed. Several local subdivisions were visited.

Follow up items:

Tom Bird is going to contact the local internet service providers

Tom Bird is going to find out about what specific qualifications will be called for [for permanent jobs] and will share that information with the BSRA

Josie Hernandez will look into the land use patterns in states where NextEra is currently operating and will follow up with the BSRA

Tom Bird will send BSRA a copy of the report [avian study] when it is complete

Goderich Aircraft Meeting

September 30, 2010

Attendees [REDACTED], Goderich Aircraft, Vince Deschamps, Jeremy Shute

- [REDACTED]
 - [REDACTED]
 - [REDACTED]
 - [REDACTED]
 - [REDACTED]
 - [REDACTED]
- Wants to make sure we are looking at Nav Canada guidelines
- They originally wanted a 5 mile or 10 mile development-free zone around their facility, but have realized that those expectations are not realistic
- Nav Canada has 2 files on the go forNExtEra's wind projects in this area.
 - Land Use File # 10-1632 for Goshen project
 - Land Use File # 10-1633 for the Bluewater project
 - Paul Pinard is the land use specialist with these files for Nav Canada
 - [REDACTED]
 - [REDACTED]
- Transport Canada document TP 1247 has good information
- Some turbine blades look like airplane blades to radar systems
- [REDACTED] provided some diagrams from the TP 1247 guide

Attendees: [REDACTED] Vine Deschamps, Jeremy Shute

- [REDACTED], private pilot
 - [REDACTED]
- [REDACTED] Aero Ltd.
 - [REDACTED]
- [REDACTED]
 - Grand Bend Sport Parachuting Centre
 - [REDACTED]

- 2 ½ ° slope is needed for takeoff and landing
- With new parachuting students there is always a possibility for radar failure or change in wind
 - Never had anyone past 1.5 mile radius
- 2 mile radius would minimum needed for a buffer
- 2.5 to 3 mile radius would be a lot better – approach pattern is a rectangle not a straight approach
- 1000 feet is typical circuit heights for an approaching plan within the 3 mile planes can fly as low as 500 feet; Aircraft are about 500 feet high on final approach
-
- Need to have lights on the turbines
- Over open country you can go as low as 500 feet
- Are there turbulence issues associated with turbines?
- Sexmith airport near Exeter
 - [REDACTED]
 - [REDACTED]
 - 20-25 planes
 - Minimum 150 feet above height of blades
 - One guy IFR rated
 - Can fly in clouds with computer assisted navigation
 - Meetings once a month
- Another private airstrip in Bluewater project
 - Flying farmers have a book out with their members locations
- If there are issues it would be for people flying in from outside the area
 - This airport is listed in the supplement
 - Neighbours of a farmer with a turbine won't be a problem

- Canada Flight Supplement. Nav. Canada
 - Updates monthly
 - Shows obstacles in area
 - May need to send turbine locations to Nav Canada
- Nav Canada VFR Navigation chart
 - Maps = now beginning to show warnings of where there are turbines
- 2 eagles were seen near the aerodrome this spring
 - High ridge near Parkhill could be good for turbines
 - Birds/swans an issue in the spring
- Used to be, and still may be, an airstrip near Forest
- There is a small grass strip near Port Franks Road. Peter Bastiansen.

NextEra Energy Communication Records

Bluewater Shoreline Residents Association Meeting, February 17, 2011

Attendees: Tom Bird (NextEra - Project Manager, Environmental Services), John Gillespie (Hay West Ward Councillor), Neil Jones (NextEra - Project Director, Business Development, Jericho Project), [REDACTED] (BSRA – President), [REDACTED] (BSRA - Past President), [REDACTED] (BSRA – Resident), Jeremy Shute (AECOM – REA consultant to NextEra).

- [REDACTED] I prepared an agenda for the meeting and distributed it to everyone in attendance (attached)
- There was discussion about how the contracts with OPA work. Notification should come sometime this summer whether or not there is a contract. The next studies to be undertaken this year will be archaeological and ecological to meet REA requirements. They are then submitted with the REA. Two things are needed before construction – a contract and REA approval.
- Question - have there been changes to the process as a result of the court cases or any expected? No, there have been no changes to the process.
- What would happen if there are new regulations that come out of the court cases - for example 550 metres was moved to 800 metres? If the distance to receptors was changed to 800 metres, the number of turbine locations would be reduced. Some of the existing locations would be removed from consideration. The siting process is currently underway – NextEra is not sure of number of turbines at this point.
- BSRA mentioned that they appreciated that NextEra had come to speak. Their concerns have deepened over time. The meeting agenda was discussed. Also the REA submission process was discussed. Timing of submission for public review was brought up. Many BSRA residents are away during winter, therefore a summer meeting is preferable. There is talk about a potential public meeting in December. Perhaps there would also be other opportunities to meet with BSRA during the summer or early September.
- There was a question from BRSR about whether NextEra makes any concessions from issues raised at meetings. NextEra gave an example from another project in Ontario where the proximity to a school was raised, and NextEra removed that particular turbine.
- BSRA cautioned about the Tundra Swans and their flight path for Jericho project site. Swans come through this area around the 8th to 20th of March. This may be prior to the bird survey season. They also fly over the Goshen, Bluewater projects. They also feed inland. NextEra will be happy to share avian studies with the BSRA. The MNR will make NextEra shut down the turbines during certain seasons if there are unacceptable impacts to the tundra swan population. NextEra wants to avoid this potential if at all possible and mentioned that NextEra had ceased to consider a potential project site in the past due to Tundra Swan flight paths. BSRA also raised the importance of a major migration route for monarch butterflies through the area. The migration route for both monarch butterflies and birds is a significant issue.

- BSRA would like to ensure that the turbines are kept east of Highway 21. Setbacks were discussed. Also design issues and constraints were discussed. NextEra is going to try to keep each project as contiguous as possible. In terms of road crossings, BSRA mentioned that the east to west roads are gravel and the north south roads are paved.
- BSRA mentioned that in Wolfe Island, supplementary funding for the municipality was received, and that NextEra can expect a similar approach here. The tax revenue as it currently stands is not great from projects. Wolfe Island has set a precedent. Because the tax rate is low in Ontario, this Wolfe Island example is expected here. NextEra is hearing this from many municipalities and will take into consideration.
- BSRA mentioned that it is likely that NextEra will be seeing political action soon. The provincial government could change, and people are unhappy with the Green Energy Act. The Province may back away from implementation of the Green Energy Act as the election approaches. NextEra stated they are monitoring the political environment.
- There was a question about opt-out clauses from the government contracts. NextEra was not aware of such a clause.
- BSRA is concerned that they are going to see their energy costs triple and that this could lead to energy poverty. There was discussion about where the additional costs are coming from and how the additional costs should be attributed – whether it's from new renewable energy or other aging infrastructure. BSRA and NextEra agreed to disagree and that such issues would not be resolved in this particular forum.
- BSRA mentioned that the community is divided. Their concern is that farmers are locked in to a contract and can't simply change their mind. As part of NextEra's process, landowners can participate as much as they would like about the decisions that affect their farms. BSRA mentioned that there is a certain level of alienation in the communities. It was suggested that putting wind turbines 1-2 km east of the Highway 21 would greatly reduce or possibly eliminate concerns from the BSRA. NextEra stated they would take that into consideration.
- NextEra's supply mix and operations were discussed. There was some discussion about what would happen if the provincial government changes. There was also some discussion about different models of energy production including one where the property owner has many smaller sources. This distributed model does not apply to any of the NextEra projects in this area. That model is usually called distributed power and would probably fall under the OPA. NextEra suspects that this is the direction OPA will probably go over the next couple of decades.
- There was a question about how BSRA and NextEra can work together in the future.
- The Two km setback question is a prime one for the BSRA. BSRA also mentioned that 2 km setback is a World Health Organization recommendation. NextEra stated, that to their knowledge, the World Health Organization has not recommended a 2 km setback and asked if BSRA could provide documentation that supports that claim. [REDACTED] is going to try to find that World Health Organization reference. 1000 metre setback from the shoreline was also discussed. That would be from the shoreline, and not every individual home. The BSRA would also like 2 km from what they call a designated settlement area.

- [Note, both 1 km east of Highway 21 and 2 kms east of Highway 21 have been mentioned by BSRA in discussions between with NextEra, as have distances of 1 km and 2 km east of Lake Huron. It is not clear to the note taker (Jeremy Shute) if the 1km distance from Highway 21 is the minimum desired setback for BSRA and if 2 kms is a preferred setback or if 2 kms east from Highway 21 is the minimum desired setback or if 2 kms east of Lake Huron is the minimum desired setback distance.]
 - [Follow-up note. Further discussion with [REDACTED] has clarified that BSRA would like the minimum setback distance to be 2kms east of Highway 21]
- NextEra wants to be a long-term partner in the community, and would like these sorts of discussions to continue. BSRA said that they are happy to have this meeting and NextEra appears to be listening to them.
 - There was discussion that Huron County might implement a low-frequency noise bylaw. BSRA mentioned that health concerns are real.
 - BSRA speculated that if a group like Bluewater Against Wind Turbines was to form, it probably won't be NextEra that would be targeted, but the individual property owners that are signing lease agreements. Such a group might focus on raising awareness about liability issues. There has been a problem lately in the community with the local oil and gas company. The issues are being framed as David vs. Goliath. A likely strategy of Bluewater Against Wind Turbines would be to put pressure on individual landowners to get out of their leases.
 - There was discussion about how the BSRA could have input into the REA studies. The avian studies are underway and will be sent to BSRA once they are completed. BSRA is welcome to send formal comments, and there was a discussion about the comment period. [REDACTED] will send comments or notes as a submission.
 - BSRA would like to talk to people who live near turbines in other projects. They are also curious about any projects that are near fresh water lakes. At this point NextEra is not interested in offshore wind development.
 - Follow up actions:
 - Tom Bird is going to send avian studies to [REDACTED] once complete.
 - Jeremy Shute will prepare the minutes from this meeting and circulate to everyone. [Follow up note, the minutes were circulated to [REDACTED] and were revised, based on his input, on July 14, 2011]
 - [REDACTED] will look for the World Health Organization reference and circulate to everyone. [Follow-up note, [REDACTED] has looked for this reference and it does not seem to be readily available and may be quite dated. There may be some new research available on additive noise from turbines. [REDACTED] is going to see if this research can be located.]
 - It may be better to meet with Shoreline residents during the time when most residents are here – probably the end of the summer or early September. The BSRA have an annual meeting in August.

Subject: FW: information please

From: Dudek, Derek [<mailto:Derek.Dudek@nexteraenergy.com>]
Sent: Thursday, May 26, 2011 10:56 AM
To: [REDACTED]
Subject: RE: information please

Correct, not within 550 metres. Beyond that distance is possible. With our Goshen WEC project we do not have any turbine locations identified at this time.

Derek Dudek | Community Relations Consultant
NextEra Energy Canada, ULC
5500 North Service Road, Burlington, ON L7L 6W6
o:905.335.4904 x18 f:905.335.5731
mobile - 519.318.0237
derek.dudek@nexteraenergy.com

From: [REDACTED]
Sent: Thursday, May 26, 2011 10:34 AM
To: Dudek, Derek
Subject: Re: information please

Thank you for your reply.

So that I understand, you are saying that there will be no turbine construction anywhere near Zurich....even within the 550m setbacks??

[REDACTED]

----- Original Message -----

From: [Dudek, Derek](#)
To: [REDACTED]
Sent: Thursday, May 26, 2011 10:27 AM
Subject: RE: information please

Hello [REDACTED]

The map for Goshen on the most recent newsletter is correct. However this represents our project area (or study area) where we are conducting our environmental background work for the project.

We could not site turbines within the Town of Zurich due to setbacks required from homes, but we are required to study the potential for environmental impacts in areas surrounding our project, which is why we chose the Zurich Hensall Road as the northern boundary for our project area.

Derek Dudek | Community Relations Consultant
NextEra Energy Canada, ULC
5500 North Service Road, Burlington, ON L7L 6W6
o:905.335.4904 x18 f:905.335.5731

mobile - 519.318.0237
derek.dudek@nexteraenergy.com

From: [REDACTED]
Sent: Thursday, May 26, 2011 9:42 AM
To: SharedMailbox, GOSHEN-WIND
Subject: information please

Hello,

I note that on the information circulated for the first public meeting, you indicate the northern boundary of the proposed "Goshen" wind installation area running through the middle of our town, Zurich.

When Mayor Dowson was questioned about this, he evidently contacted your company and was told that the map was in fact, not correct...a mistake and that turbines were only slated for South Huron.

With the most recent mailing from you company I note that no change has been made to the map.

Simple mistakes like this are easily rectified. How do you handle more serious mistakes?

Would you please provide me with an updated, correct map for the Goshen project at your earliest convenience.

If for some reason the map is not readily available, I would appreciate hearing back from you as soon as possible.

Sincerely,

[REDACTED]

----- Original Message -----

From: [Dudek, Derek](#)

Sent: Monday, July 04, 2011 3:27 PM

Subject: Goshen Bluewater Round Table

When: Tuesday, July 19, 2011 6:00 PM-8:00 PM (GMT-05:00) Eastern Time (US & Canada).

Where: 70671 Bluewater Hwy, South Huron, Ontario

Note: The GMT offset above does not reflect daylight saving time adjustments.

~~*~*~*~*~*~*~*~*

Hello,

NextEra Energy is pleased to invite you to our round table discussion on the Bluewater and Goshen Wind Energy Centres at the Oakwood Inn. Dinner will be provided.

The purpose of the meeting will be to openly discuss how the Bluewater and Goshen WEC's can benefit the Bluewater and South Huron communities, as well as the broader Huron County community and how NextEra can be effective in responding to the concerns of the community during the various phases of the project. An agenda will also follow shortly.

I am aware that some of you have had to decline attendance based on previous commitments. However, I have included you in this email based on our past discussions that you were possibly sourcing another person from your group to attend.

If you could please respond with the name of the person attending so that we can provide the appropriate place cards.

For those that I have not made contact with yet for various reasons (ie. voicemail exchanges, etc.), please let me know if you have interest in attending and I will continue to keep you updated as part of this mailing list.

Derek Dudek | Community Relations Consultant

NextEra Energy Canada, ULC

5500 North Service Road, Burlington, ON L7L 6W6

o:905.335.4904 x18 f:905.335.5731

mobile - 519.318.0237

derek.dudek@nexteraenergy.com

From: [REDACTED]
To: [Dudek, Derek](mailto:Derek.Dudek@nexteraenergy.com)
Subject: RE: bluewater and goshen wind energy centres - round table meeting
Date: Friday, June 17, 2011 1:27:11 PM

Thanks, Derek.

The people who have questions and concerns can best articulate their position but certainly we have heard – through presentations and discussions at the table – about concerns of visual impacts (e.g., will too many and too large turbines be a disincentive for people to travel to the Lake Huron area?), potential health impacts (e.g., while some people may not appear to be affected some other people living with or near large turbines have expressed the belief that their health and enjoyment has been impacted – can setbacks, size and design mitigate potential impact? Why are setbacks here less than European setbacks?), environmental impacts (e.g., bat populations being affected in ways described in graphic terms), etc.

I expect most of these issues may come up at your meetings.

Good luck with your roundtable.

Have a great weekend,

[REDACTED]

Confidentiality Notice

The information contained here, including any attachments, may be confidential, is intended only for use of the recipient(s) named above and may be legally privileged. If the reader of the message is not the intended recipient, any dissemination, distribution, disclosure or copying of this communication is strictly prohibited. If you have received this communication in error, please resend this communication to the sender and delete it permanently from your computer system or communication device.

From: Dudek, Derek [<mailto:Derek.Dudek@nexteraenergy.com>]
Sent: Friday, June 17, 2011 1:13 PM
To: [REDACTED]
Subject: RE: bluewater and goshen wind energy centres - round table meeting

Thanks [REDACTED]...that should work if somebody wants to attend as an "interested business owner" or something of that nature.

You can assure anybody that we are not looking for any position on wind, but rather insight into what is of general concern/interest to to HTA.

Derek Dudek | Community Relations Consultant
NextEra Energy Canada, ULC
5500 North Service Road, Burlington, ON L7L 6W6
o:905.335.4904 x18 f:905.335.5731
mobile - 519.318.0237
derek.dudek@nexteraenergy.com

From: [REDACTED]
Sent: Friday, June 17, 2011 11:56 AM
To: Dudek, Derek

www.canadianwindproposals.com

Derek Dudek | Community Relations Consultant
NextEra Energy Canada, ULC
5500 North Service Road, Burlington, ON L7L 6W6
o:905.335.4904 x18 f:905.335.5731
mobile - 519.318.0237
derek.dudek@nexteraenergy.com

From: [Dudek, Derek](#)
To: [REDACTED]
Cc: [Cushing, Julia](#)
Subject: Goshen WEC Inquiry
Date: Monday, July 11, 2011 9:57:00 AM

[REDACTED]

The announcement on July 4, 2011 was a Feed-in-Tariff contract offer from the Ontario Power Authority to NextEra Energy Canada which will enable us to sell electricity to the Ontario electrical system. However, this is separate from the approvals to which our recent newsletter was referring. That separate process is the Renewable Energy Approval (REA) process which is administered by the Ministry of the Environment (MOE). The REA is the formal process whereby we undertake background environmental work and stakeholder consultation and apply to the Province for the approval of any development. We have initiated our REA for the Goshen Wind Energy Centre but do not anticipate completing that process until 2012, and would be seeking MOE approval at that time.

In other words, the FIT contract simply gives us the assurance that if the REA is approved, it can be hooked up to the grid.

Derek Dudek | Community Relations Consultant
NextEra Energy Canada, ULC
5500 North Service Road, Burlington, ON L7L 6W6
o:905.335.4904 x18 f:905.335.5731
mobile - 519.318.0237
derek.dudek@nexteraenergy.com

From: [REDACTED]
Sent: Thursday, July 07, 2011 2:15 PM
To: SharedMailbox, GOSHEN-WIND
Subject: Fw: Wind Farms

I have copied you on an e-mail that I sent to some friends and political contacts for your reference.

My question to you is -- In your recent 'Wind Energy News' it claims that the next open house for these projects will be in early 2012 and we will be informed etc of the process and to send you our comments and concerns. How then can Brad Duguid on this past Monday be announcing contracts with yourselves and implying it is a done deal ready to go? Also as stated below his PR rhetoric makes you wonder if he has any knowledge at all of industrial wind energy.

Thank you

[REDACTED]

Subject: Wind Farms

Hi:

With the current flurry of contract approvals by Brad Duguid there has been many new voices out there challenging the province's green energy thrust with wind power.

The attached article by Ross McKittrick, professor of Economics at University of Guelph is one of the best that I have read in the past year and tells it like it is. I just read another piece by Michael Trebelcock, Law Professor at U of T that was equally informative. It is interesting that more and more learned professionals such as Dr. Robert McMurtry who is being awarded the order of Canada, and these respected professors are speaking out and strongly opposing the McGuinty governments energy policy.

The rhetoric by Brad Duguid on TV the other day when he was announcing the new wind developer contracts laid somewhere between gross exaggeration and outright lies. I can not understand how they can not at least acknowledge some of the basic negative aspects to their plans.

My only goal in sending this information to you is to generate interest on this issue and urge people to get informed as I believe this will a huge potential impact on all residents in Ontario.

Thanks for listening to me



From: [REDACTED]
To: [Dustin Dorsch](#)
Cc: [Heather Rodick](#); [Doug Cook](#); [Doug Bornstein](#); [Bill Weber](#); [Lexia Hillman-Rapley](#); bfuzuki.MPP@liberal.ca.org; [Van Rommel, Maria.MPP.CO](#); ycolenders@googlegroups.com
Subject: Fw: If you see one of these starting to smoke...RUN!
Date: Tuesday, July 19, 2011 10:29:45 PM

To: Nextera Energy

I received this from a friend visiting in the U.K. and Europe.
I trust that wind developers are insured against catastrophic failure. I can imagine the lawsuits and claims if such an occurrence allowed flaming debris to be blown or fall on a neighbour's property causing death, injury and property damage.
Although it must be relatively rare I see this as yet another negative aspect to industrial wind turbines that is not discussed. Pictures speak louder than words and this can and has happened.

Respectfully forwarded to you for your information.



If you see one of these starting to smoke...RUN!

Gear oil failures in windmills

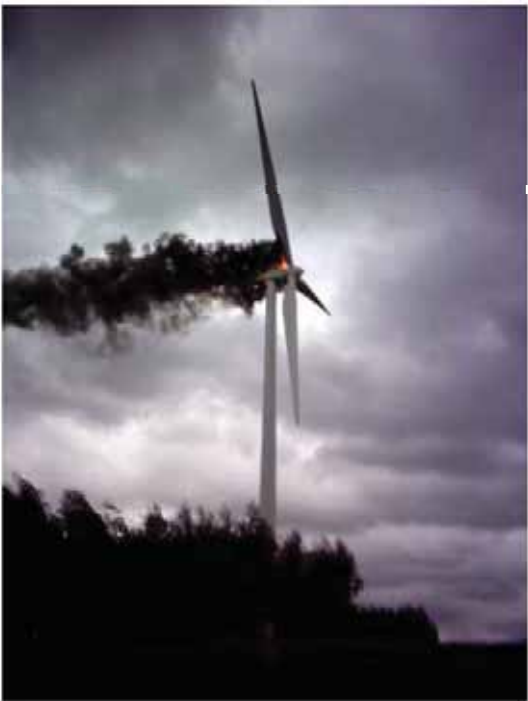
Here are some photos of what happens when transmission failures occur in windmills.
To date no gear oil has been invented to withstand the pressures produced within these transmissions.
Most recently, the government gave
Dow-Corning a big grant to work on it.
Previously, many others had tried and failed.













Boy, they really burn, don't they?

So much is made of their green environmental help to combat global warming...

From: Dudek, Derek [Derek.Dudek@nexteraenergy.com]
Sent: Tuesday, August 23, 2011 11:40 AM
To: McBeath Funeral Home
Cc: Geneau, Nicole; Cushing, Julia
Subject: Follow up - August 10th meeting

Hello Joyce,

Please send my thanks to the board members for meeting with me last night to discuss NextEra Energy Canada and our Bluewater and Goshen Wind Energy Centres. Just wanted to follow up with some information that was requested of us, and was hoping that you could disseminate the information to all those in attendance:

1. Concern over proximity of turbine locations to Village of Zurich and how it might impact future growth of the Village beyond the existing urban growth boundary within the Official Plan. A request was made that all turbines be located beyond 2km of this boundary.

It should be noted that the definition of Zurich within the Municipality of Bluewater Official Plan Section 8.4.2.3 states the following: *"There is adequate land designated for residential development and new development should take place through infilling or by registered plan of subdivision on full Municipal services."* However, I can confirm that based on draft layouts that are not yet available to the public we are not proposing any turbines within 2km to the north or west of the Village of Zurich beyond any planned growth within the current growth boundary. We do however, have several turbines planned for an area southeast of the Village that are located between 800m and 2km of the Village. These are located in an area beyond the town's sewage lagoons and nearer the 500kv overhead electrical transmission line. It is our opinion that these locations would not likely accommodate village growth based on required setbacks from the 50kv line and sewage lagoons. We hope that this information satisfies your concerns regarding future growth in Zurich. We appreciate that you will likely have further comments on this upon availability of the mapping showing our exact proposed locations, and will forward that information to you upon availability.

2. Confirmation of the Goshen WEC point of interconnection

I mistakenly noted that the Goshen substation and point of interconnection would be located along the 500kv line. The actual location is along the same 110kv line as the Bluewater project, but located in the very eastern portion of South Huron at a yet to be determined location near Highway 23.

3. Chamber members noted concerns over the interaction between proposed turbines and proposed underground gas storage wells being planned beneath our project area.

By way of this email, I have notified AECOM, our environmental consultants, of this concern. One of their many responsibilities will be reviewing all oil, gas, and salt resources and related infrastructure to determine potential impacts and possible mitigation measures as may be required between each projects infrastructure.

4. The Chamber noted interest in meeting with additional NextEra team members to discuss items related to construction and operations.

To be arranged at your discretion.

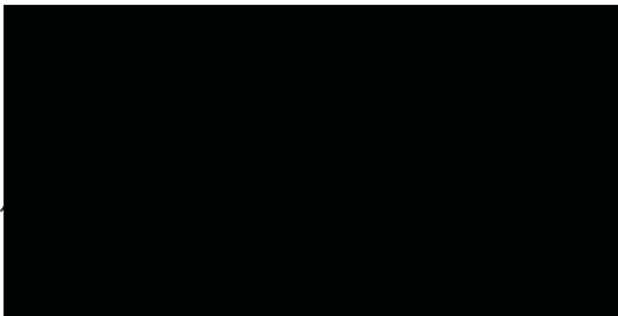
Derek Dudek | Community Relations Consultant
NextEra Energy Canada, ULC
5500 North Service Road, Burlington, ON L7L 6W6
o:905.335.4904 x18 f:905.335.5731
mobile - 519.318.0237
derek.dudek@nexteraenergy.com

Aug. 11, 2011

Please acknowledge receipt of this survey.

I would also like to know how the results of this survey are used. Do these surveys become a part of your REA report or are they filed in the waste paper basket?

Thank you.





Have you seen the documentary
"Windfall" directed by Laura Israel?
It should be a "must see" for everyone

Goshen Wind Energy Centre Project involved in the
Public Information Centre Survey IWT Industry.

Personal Information (optional)

Name: _____
 Address: _____
 Phone: _____
 Email: I DONOT WISH TO BE CONTACTED BY E-MAIL

- How did you hear about the Public Information Centre? (circle all that apply)
 - Invitation sent by NextEra Energy Canada
 - Newspaper ORIGINALLY
 - Friend or family member
 - Other, please specify: _____

2. What questions or concerns did you have about the Goshen Wind Energy Centre project?

We attended the Open House in June 2010 but did not fill out a questionnaire. I don't know why we received the letter in July, 2011. We asked many questions at the Open House & since then we have done extensive research on IWT's and we have attended many meetings of community groups.

3. Were your questions/concerns answered to your satisfaction? If no, please explain.

no.
The questions we asked at the Open House were answered but obviously we wanted to learn much more which we have continued to do for over a year. As well as learning about IWT's we have also learned a lot about NEXTERA - an American Company out of Florida

4. What remaining questions or concerns do you have about this project?

I asked a number of questions of Derek Dudek in a July 2011 telephone conversation.

- What plan does NEXTERA have to deal with people who become ill and cannot live in their homes because of your turbines? A: No plan - will deal with it if it happens.
- What financial plan is put in place to pay for decommissioning turbines?
- What liability does the community have in dealing with fire, accidents etc. caused by turbines?



5. In your opinion, do you think this project will be beneficial to your community?
If yes, what do you think the benefits of this project will be? If no, why not?

Absolutely not! I realize your whole interest in operating in Ontario is based on "The Green Energy Act" and the FIT which it provides. We do not agree with the GEA in how it was set up and how it is administered. It has many, many flaws and is of no benefit to rural Ontario. Since learning so much about IWT's and their harmful effects we will be working to defeat the liberal gro't.

6. What did you learn about NextEra Energy Canada or the Goshen Wind Energy project?

I learned NEXTERA is an American (not Canadian as they like to portray themselves) company owned by Florida Light & Power. In my telephone conversation with Derek Dudek I noted that there are no IWT's in Florida. He said they can't compete with the parent company and his words were "There is no wind in Florida." What a ridiculous statement.

7. How would you prefer to receive further information about the project(s)?
Circle all that apply:

- a) by phone
- b) by mail
- c) in person
- d) at another open house event
- e) by email
- f) by the local newspaper, please specify the paper: _____
- g) I don't want to receive further information about this project

We are constantly researching and gathering all available information on IWT's and we are aware of your websites and activities

8. Was the information provided today helpful and informative?

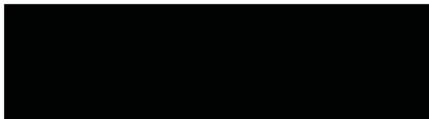
YES NO
activities

If you would prefer to mail or fax your completed survey, please send to:
NextEra Energy Canada
Att: Thomas Bird
5500 North Service Road, Suite 205
Burlington, ON L7L 6W6

or

please fax to (905) 335-5731

*Why do people signing leases have to sign a "gag" order?
Is this true??*



Aug. 11, 2011

Owen, Jennifer

To: Cushing, Julia
Subject: RE: wind trubines your emial of Aug 23, 2011

From: [REDACTED]
Sent: Saturday, September 10, 2011 12:34 PM
To: Dudek, Derek
Cc: [REDACTED]
Subject: wind trubines your emial of Aug 23, 2011

Hello Derek;

Further to your email addressed to [REDACTED]...as an initial reply we would advise that our position on setback remains 1000 metres for future development and an additional 1000 metres as a setback.

We require these setbacks acknowledged in writing and committed to now and in the future.

With regard to the official plan for Bluewater, unfortunately it took no account of the possibility of wind turbines being installed close to the Village. Unfortunately, planners may use 20 years as the term of a plan but they like us do not have a way foretelling what the future will bring. Therefore we need to deal with this issue now and we need NextEra to reconize our concern and accomodate our request.

Regardless of the above and in addition to the above a committee of the Zurich and District Chamber of Commerce will be meeting to review our wind turbine concerns.

Thank you for the August 23rd email. We look forward to your further correspondence.

[REDACTED]

September 13, 2011



Dear [REDACTED]:

Regarding: Response to your August 11, 2011 Public Information Centre Survey

NextEra Energy Canada, ULC (NextEra) would like to thank you for providing us with your Public Information Centre Survey form dated August 11, 2011 regarding the Goshen Wind Energy Centre (the Project). We appreciate your time in providing comments and we are pleased to provide you with the following information; organized under subject headings to correspond with the questions/comments in your survey form.

Survey Results

Your comments, along with the comments received from other stakeholders throughout the Project planning process, will be included in the Consultation Report submitted to the Ministry of the Environment as part of the Renewable Energy Approval (REA) Application. This Report will be made available to the public for review at the time of its submission and will provide an overview of consultation activities in addition to stakeholder comments and NextEra's responses. Finally, this Report will also outline how these comments were considered in the planning process and any changes to the Project resulting from the Public, Agency and Aboriginal engagement.

Distribution of the Stakeholder Response Letters

NextEra elected to provide the Public Information Response letter to all members of the public on the Goshen Stakeholder Database. This was to ensure that all attendees at the Public Information Centres, and not only those who submitted survey forms, received responses to the common topics raised through the meetings.

Health Effects

NextEra is not aware of any scientifically, peer-reviewed studies that demonstrate a link between wind turbines and negative health effects. Nevertheless, NextEra takes human health and concerns raised by members of the public very seriously. We strive to build long-term, beneficial, relationships with the communities in which we seek to operate a wind energy centre. As such, NextEra will establish a Construction and Emergency Response Plan as part of our approvals for this project, which will outline procedures to protect its workers, the public, and

the environment. This Plan will be able to be reviewed by the public and the local authorities to ensure it satisfies local needs.

Decommissioning Plan

A Decommissioning Plan Report is a mandatory component of the REA application to be submitted to the Ministry of the Environment. This report will describe the procedure required to dismantle the wind energy facility and restore the site to condition suitable to its use prior to the installation of the project. Financing to decommission such projects is the responsibility of the owners of the project as part of the REA approval, and there is no responsibility to post security. NextEra does not build projects to sell to operators, as the value to our shareholders is as owner/operators of viable energy projects, and we believe there is no discernable reason for the Goshen WEC to be decommissioned within its expected operating lifespan.

Accidents and Malfunctions

The local EMS and fire departments have the right to comment on our proposed emergency response protocol and we ensure that all such agencies are both well-equipped and trained to deal with any emergency matters to their satisfaction. Rest assured that NextEra takes the safety of its employees, neighbours, and equipment very seriously. As a result, NextEra maintains policies and procedures that encompass rigorous training for all employees and maintains contact with all local authorities. Modern wind turbines are very reliable and are designed to operate for approximately 25 years. Accidents and malfunctions are extremely uncommon, and NextEra maintains centralized 24 hour monitoring of its wind energy centres, in addition to the on-site technicians available 24 hours by phone.

Benefits to Rural Ontario

Wind turbines sited in agricultural fields allow farmers to continue their traditional farming practices up to the base of the wind turbine while at the same time providing an alternate source of stable income. As such, these projects benefit the individual farmer through providing annual lease payments, and they benefit the overall community through establishing contributions to the municipal tax base as well as providing local employment.

NextEra Energy Canada

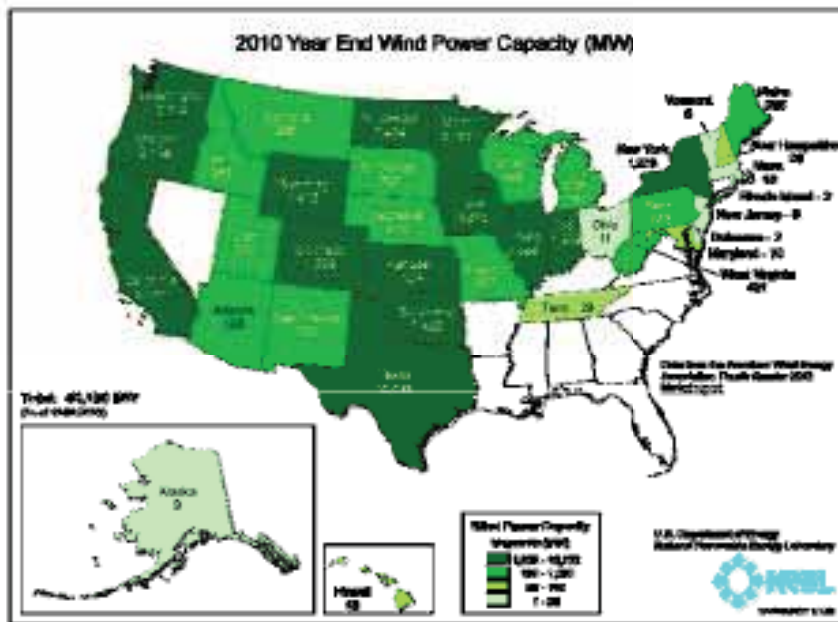
NextEra Energy Canada is a subsidiary of NextEra Energy Resources, LLC, previously known as FPL Energy until 2009 when it completed a corporate name change. NextEra Energy Resources is a completely separate and distinct legal and operational entity from the Florida Power and Light Company. Both are owned by NextEra Energy, Inc., a publicly traded company listed on the New York Stock Exchange (Sym: NEE).

NextEra Energy Canada is headquartered in Burlington, Ontario and currently operates 4 wind farms in 3 provinces. Once our current projects in Ontario are operational, we will employ more than 100 people across Canada.

Wind Energy in Florida

As noted above, our sister company, Florida Power & Light, is the company with active business interests in the State of Florida, not NextEra Energy Resources. As such, we are unable to comment in detail on their plans.

However, we would like to provide clarification regarding the quote in your survey indicating that there is no wind in Florida. NextEra would like to explain that to-date, the nature of the wind resources in Florida have not been deemed sufficient to establish an economical wind energy centre. As you will note in the graphic below provided by the US Dept of Energy, the assertion holds true that such development has not occurred in the entire US southeast to date based on a wind regime that is not economical.



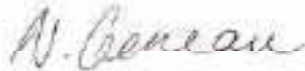
Land Lease Agreements

The land lease agreements do not contain gag orders. These agreements are legal documents between NextEra and the property owner. As the lease agreements contain proprietary information, NextEra keeps these documents confidential for commercial reasons.

We would like to thank you again for providing us with your questions/comments and for taking the time to conduct research on the wind energy industry. While you are conducting further research, we would encourage you to review documents from a wide variety of sources. The Project's website, <http://www.canadianwindproposals.com/>, contains links to various resources where you can find additional information on the industry and many of the topics you raised in your survey form.

If you have any further questions or comments, or if you would like to set up a meeting with the Project team, please do not hesitate to contact me at 1-877-257-7330, or by email at Goshen.Wind@nexteraenergy.com.

Sincerely Goshen Wind, LP

A handwritten signature in cursive script that reads "N. Geneau".

BY: Nicole Geneau
Project Director, NextEra Energy Canada, ULC

Cc: Julia Cushing, AECOM

From: [REDACTED]
To: [Dudek, Derek](#)
Subject: Re: RE page 3 of letter Wind Energy in Florida
Date: Wednesday, September 28, 2011 10:05:19 AM

Obviously we have different opinions on the viability of wind energy. As I noted this week there were many times when there was absolutely no wind. You will never convince me that wind is a reliable source of power generation. You know as well as I do that it must always be backed up by reliable sources. Therefore it does not replace reliable sources such as nuclear, hydro and gas-fired plants. At the present time our economy cannot support the huge investment in something that is unreliable.

How seriously NextEra takes health concerns remains to be seen. I suppose you could just tell people to leave their homes and go and live somewhere else. If you did take the concerns seriously you should question the Ontario government on their irresponsible set backs of 550 meters. The set backs should be at least 2 kilometers.

[REDACTED]

----- Original Message -----

From: [Dudek, Derek](#)
To: [REDACTED]
Sent: Wednesday, September 28, 2011 9:14 AM
Subject: RE: RE page 3 of letter Wind Energy in Florida

Hello [REDACTED],

FIT contracts are not subsidies in the traditional sense of artificially reducing costs of something through taxpayer dollars, rather they are a way of allowing renewable energy technologies to compete against traditional technologies which have been and still are subsidized. FIT's have been shown to be an effective mechanism at developing a market and lowering prices (through scheduled price reductions) by encouraging industry innovation. Subsidies are common in some energy areas, such as the nuclear industry in Canada, which is subsidized by the federal government for both research & innovation, in addition to other subsidies for cost overruns and liabilities.

NextEra Energy Canada takes health concerns seriously and we stand by our earlier comments in our letter to you dated September 13, 2011.

Derek
519-318-0237

From: [REDACTED]
Sent: Thursday, September 22, 2011 6:55 PM
To: [Dudek, Derek](#)
Subject: Re: RE page 3 of letter Wind Energy in Florida

Derek

If your statement is correct why does Nextera need 20 year contracts with guaranteed subsidies???

After the recent revelations of wind companies buying homes from some people who are not able to live in them any longer because of illness caused by wind turbines, I would assume your company will be making

contingency plans for handling similar situations. Your company would probably not want to have a lawsuit against it as the lawsuit filed in Thamesville.

----- Original Message -----

From: [Dudek, Derek](#)

To: [REDACTED]

Cc: [Geneau, Nicole](#); [Hernandez, Joselen](#)

Sent: Thursday, September 22, 2011 3:54 PM

Subject: RE: RE page 3 of letter Wind Energy in Florida

Hello [REDACTED]

We respectfully disagree with your assertion. According to the US Dept of Energy, wind power is expected to quickly become one of the most competitive forms of electrical production.

Please see the chart below.

Table 1. Estimated Levelized Cost of New Generation Resources, 2016.

Plant Type	Capacity Factor (%)	U.S. Average Levelized Costs (2009 \$/megawatt-hour) for Plants Entering Service in 2016				
		Levelized Capital Cost	Fixed O&M	Variable O&M (including fuel)	Transmission Investment	Total System Levelized Cost
Conventional Coal	85	65.3	3.9	24.3	1.2	94.8
Advanced Coal	85	74.6	7.9	25.7	1.2	109.4
Advanced Coal with CCS	85	92.7	9.2	33.1	1.2	136.2
Natural Gas-fired						
Conventional Combined Cycle	87	17.5	1.9	45.6	1.2	66.1
Advanced Combined Cycle	87	17.9	1.9	42.1	1.2	63.1
Advanced CC with CCS	87	34.6	3.9	49.6	1.2	89.3
Conventional Combustion Turbine	30	45.8	3.7	71.5	3.5	124.5
Advanced Combustion Turbine	30	31.6	5.5	62.9	3.5	103.5
Advanced Nuclear	90	90.1	11.1	11.7	1.0	113.9
Wind	34	83.9	9.6	0.0	3.5	97.0
Wind - Offshore	34	209.3	28.1	0.0	5.9	243.2
Solar PV ¹	25	194.6	12.1	0.0	4.0	210.7
Solar Thermal	18	259.4	46.6	0.0	5.8	311.8
Geothermal	92	79.3	11.9	9.5	1.0	101.7
Biomass	83	55.3	13.7	42.3	1.3	112.5
Hydro	52	74.5	3.8	6.3	1.9	86.4

¹ Costs are expressed in terms of net AC power available to the grid for the installed capacity.

Source: Energy Information Administration, Annual Energy Outlook 2011, December 2010, DOE/EIA-0383(2010)

Derek Dudek | Community Relations Consultant

NextEra Energy Canada, ULC

5500 North Service Road, Burlington, ON L7L 6W6

o:905.335.4904 x18 f:905.335.5731
mobile - 519.318.0237
derek.dudek@nexteraenergy.com

From: [REDACTED]
Sent: Thursday, September 22, 2011 11:55 AM
To: SharedMailbox, GOSHEN-WIND
Subject: RE page 3 of letter Wind Energy in Florida

Ms Geneau

The reason that wind energy is not economically viable to wind developers in the states that are pictured in white is that these states apparently do not provide Feed In Tariffs. Wind energy is not viable anywhere without subsidies.

[REDACTED]

From: Dudek, Derek
To: [REDACTED]
Cc: [REDACTED]
Subject: RE: *follow-up re information source* re Question regarding wind turbine installation on highway 21 just north of hwy #83 intersection
Date: Tuesday, November 01, 2011 10:35:00 AM
Attachments: [image001.png](#)
[image003.png](#)

[REDACTED]
My apologies....I thought you were referring to a map issued by a third party that showed proposed turbine locations.

Yes, that map does show the correct study areas, but as per my earlier emails, the distances remain the same.

The reason we propose larger study areas is to determine over the course of years of background study, where areas of unsuitability (for whatever reasons) would limit the placement of turbines and related infrastructure.

I appreciate that this leads to confusion as to where we are placing the turbines, but it is necessary as part of the background study process, and we hope to have a draft layout for the public available in early December.

Again, sorry for the confusion.

Derek
519-318-0237

From: [REDACTED]
Sent: Monday, October 31, 2011 6:57 PM
To: Dudek, Derek
Cc: [REDACTED]
Subject: *follow-up re information source* re Question regarding wind turbine installation on highway 21 just north of hwy #83 intersection

Derek:

The flyer was delivered to our home called "Wing Energy News Volume 2 Fall 2011" - sent out by Nextera Energy..

We received this mid-week via the mail

There is a map on the back of this 4 page pamphlet that shows 3 Wind Energy projects - Goshen, Bluewater and Jericho..

Please let me know if you need a copy of this and you can drop by our house to pick it up..

I am on my way to work in my Burlington office tm till Friday, so won't be home again until Friday night..

Thanks,
[REDACTED]

From: [REDACTED]
Sent: Monday, October 31, 2011 1:59 PM
To: [REDACTED]
Subject: RE: ... Question regarding wind turbine installation on highway 21 just north of hwy #83 intersection

Hello [REDACTED]

I'm not sure of the source of the map you are referring to since we have not yet released any layout of our Goshen or Bluewater projects.

We are unaware of any turbine layouts being circulated, but they are not sanctioned by NextEra Energy Canada. Could you provide us with the source of this map.

While our "study area" does extend to Highway 21 in the west, my previous calculation (ie. approximately 6km) still applies with respect to distance of our turbines from your address as provided.

I will advise you when our draft layout is released to the public for your review.

Please don't hesitate to contact me if you have any other questions.

Thanks,

Derek Dudek | Community Relations Consultant
NextEra Energy Canada, ULC
5500 North Service Road, Burlington, ON L7L 6W6
o:905.335.4904 x18 f:905.335.5731
mobile - 519.318.0237
derek.dudek@nexteraenergy.com

From: [REDACTED]
Sent: Sunday, October 30, 2011 5:04 PM
To: SharedMailbox, BLUEWATER-WIND
Cc: [REDACTED]
Subject: ... Question regarding wind turbine installation on highway 21 just north of hwy #83 intersection
Importance: High

Hi there – I just received a pamphlet in my door when I returned home from work this past Friday...

It shows maps of planned projects that are in the vicinity of our house...

The map for the "Goshen project" appears to go right up the right hand side of highway # 21 starting at Greenway Road and running right up to the Zurich Rd. We live just north of highway # 83 Regional Rd on the opposite side of highway #21...

Contrary to the response that I received below on Sep 29 , it appears that this part of the project is indeed right across from my house – which would be both the Bluewater and the Goshen projects...

Can anyone explain to me why the information that I received below was erroneous?

I would really appreciate it...

Thanks,



From: Dudek, Derek [mailto:Derek.Dudek@nexteraenergy.com]
Sent: Thursday, September 29, 2011 09:39 AM
To: [REDACTED]
Subject: RE: Question regarding wind turbine installation on highway 21 just north of hwy #83 intersection

Hello [REDACTED]

Thank you for your inquiry. NextEra Energy Canada is proposing our Goshen Wind Energy Centre in the municipalities of Bluewater and South Huron.

Currently we do not have a turbine layout that is available for public review, but we hope to have such a layout in the very near future.

Having said that I have reviewed your address in connection with our internal draft layout and can let you know that we do not have any turbines proposed within approximately 6 kilometres of your address.

As for timing, we are hoping to begin the construction of the Goshen WEC in late Summer 2012.

Please do not hesitate to contact me if you have any other questions. In the meantime you can visit our website at www.canadianwindproposals.com to learn more about our various projects.

Thanks,

Derek Dudek | Community Relations Consultant
NextEra Energy Canada, ULC
5500 North Service Road, Burlington, ON L7L 6W6
o:905.335.4904 x18 f:905.335.5731
mobile - 519.318.0237
derek.dudek@nexteraenergy.com

From: [REDACTED]
Sent: Thursday, September 29, 2011 4:21 AM
To: Derek Dudek
Subject: Question regarding wind turbine installation on highway 21 just north of hwy #83 intersection

Importance: High

To whom it may concern (representative of NextEra Energy Inc):

Your name was provided to me by the Bluewater councilor for the municipality in which I live...

I have heard that wind turbines are being planned for installation directly across the highway from where I live...

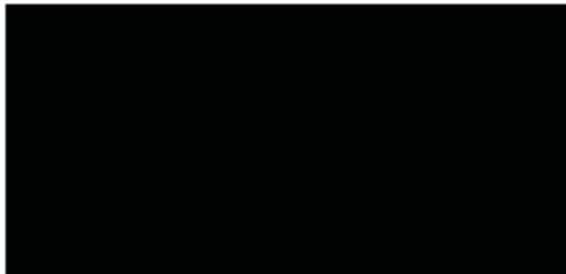
My address is:



(subdivision called Highlands 2 – on the corner of highway #21 and just north of the cross-intersection of highway #83 (Dashwood Rd) and highway#21)

I would very much appreciate specific information on plans to erect wind turbines in this immediate area – particularly for any installations within 2 km of where I live, as well as timing of such...

Thanks so very much for any information that you can provide,



--This message contains information that may be confidential and proprietary. Unless you are the intended recipient (or authorized to receive this message for the intended recipient), you may not use, copy, disseminate or disclose to anyone the message or any information contained in the message. If you have received the message in error, please advise the sender by reply e-mail, and delete the message immediately.

From: [Dudek, Derek](#)
To: [REDACTED]
Bcc: ["Cushing, Julie"; Hernandez, Joseben](#)
Subject: RE:
Date: Thursday, October 27, 2011 3:01:00 PM

Hello [REDACTED]

While we appreciate your concerns about our Goshen Wind Energy Centre project, I would be remiss if I were to not try and clarify some possible misinformation you may have about our project.

- **The cost of wind energy** - When discussing the cost of wind energy generation, the comparison should be between the cost of a MWh of new wind vs. the cost of a MWh of new nuclear, gas, hydro, etc. Comparing the cost of new generation, such as wind, to existing and legacy generation, such as coal and hydro, is an unfair comparison. When the comparison is made between new MWhs of generation wind is actually competitive on cost. In fact, the US Dept of Energy estimates that within five years, wind will be one of the cheapest forms of electrical generation as shown on the chart below.
- **Health risks** - NextEra is not aware of any scientifically, peer-reviewed studies that demonstrate a link between wind turbines and negative health effects. Nevertheless, NextEra takes human health and concerns raised by members of the public very seriously. We strive to build long-term, beneficial, relationships with the communities in which we seek to operate a wind energy centre. As such, NextEra will establish a Construction and Emergency Response Plan as part of our approvals for this project, which will outline procedures to protect its workers, the public, and the environment. This Plan will be able to be reviewed by the public and the local authorities to ensure it satisfies local needs.
- **Impacts to Wildlife** - As part of our approvals process we are required to undertake an extensive list of studies to determine what impact our project may have on local wildlife and what can be done to either avoid or mitigate those impacts. Indeed the presence of the tundra swan has informed some of our siting activities in the area. These studies are undertaken by qualified biologists and require sign-off from the Ministry of Natural Resources prior to any approval for the project.

I hope that we are able to address some of your concerns and would be happy to provide you with more detailed information if you wish. We would be happy to mail you any information on wind energy and/or NextEra Energy. In addition, you may wish to attend our upcoming open house scheduled for the Goshen Wind Energy Centre project to be held on December 8th from 4-7pm at the Stanley Complex in Varna.

Thank you,

Derek Dudek | Community Relations Consultant
NextEra Energy Canada, ULC
5500 North Service Road, Burlington, ON L7L 6W6
o:905.335.4904 x18 f:905.335.5731
mobile - 519.318.0237
derek.dudek@nexteraenergy.com

-----Original Message-----

From: [REDACTED]

Sent: Wednesday, October 26, 2011 12:35 PM
To: SharedMailbox, GOSHEN-WIND
Subject:

Hello.

I have just read your Wind News. No one has been here to see my husband and I so I am sending this email.

I do not want these wind turbines here . They are extremely costly and I do not believe they are necessary at that expense.
They cause problems with health for some people and I am not willing to put my family at that risk.
They are also an eyesore.

We have also had Tundra swans in Goshen area and wild turkeys and other wild life that I do not want disturbed.

No matter how many things you do to make it sound ok I DO NOT WANT THESE THINGS HERE.

Regards



Message sent using Hay Communications webmail

From: [Dudek, Derek](#)
To: [REDACTED]
Subject: RE: Goshen wind energy centre
Date: Monday, November 07, 2011 10:14:00 AM

Hello [REDACTED]

Thank you for your inquiry. If you go to the following link (<http://www.nexteraenergyresources.com/environment/index.shtml>) there are a number of reports listed on the right hand side under the heading Research and Studies. Some of these reports may help you to understand the work undertaken by our industry and government to address health concerns.

As an industry leader in the development and operation of wind turbines in North America, we are confident that the measures undertaken by the Province of Ontario related to wind energy developments will protect public health and safety.

If you have any questions regarding these studies, please don't hesitate to contact me, and I will work to address any outstanding matters.

Thank you,

Derek Dudek | Community Relations Consultant
NextEra Energy Canada, ULC
5500 North Service Road, Burlington, ON L7L 6W6
o:905.335.4904 x18 f:905.335.5731
mobile - 519.318.0237
derek.dudek@nexteraenergy.com

From: [REDACTED]
Sent: Friday, November 04, 2011 9:57 AM
To: SharedMailbox, GOSHEN-WIND
Subject: Goshen wind energy centre

Good Morning,

I support the development of wind energy sources, but my only concern is media reports of people becoming ill because of windmills installed near to their property

I wonder what is your position on this?



Owen, Jennifer

Subject: RE: wind trubines and Zurich & District Chamber of Commerce

From: Dudek, Derek [<mailto:Derek.Dudek@nexteraenergy.com>]

Sent: Monday, November 07, 2011 2:07 PM

To: [REDACTED]

Cc: [REDACTED]

Subject: RE: wind trubines and Zurich & District Chamber of Commerce

Hello [REDACTED]

Yes I received your Sept 26, 2011 email and we have taken your comments into consideration.

Originally you had expressed that your group would like to see a 2km setback from the Zurich village boundary. We have illustrated that the closest turbines in our Bluewater WEC project are in excess of 2km from the northern boundary of the village (ie. north of Danceland Road). Those distances remain in effect at the current time.

Also, as per my previous email, we have managed to increase the distance of the nearest turbines in the Goshen WEC project to a distance of approximately 1.9km from the southerly boundary of Zurich (south of Rodgerville Road). We are still of the opinion that this should ample room for any possible future expansion of Zurich beyond the areas of planned growth identified within the current urban growth boundary of Zurich. We do not feel that there is any rationale for increasing this setback to 3km.

We appreciate that the number of recent publications haven't shown the up to date study area, but such changes are occurring rapidly as the project planning advances. I can assure you that the study area is still broad in scope and does not indicate which properties will have turbines placed on them. To that end, we will have a copy of the draft turbine layout available for public review in early December in advance of our project meetings scheduled for Varna and Seaforth. I hope that the changes outlined above address the concerns of those residents in Zurich whom you are speaking on behalf.

Thanks, and don't hesitate to contact me with any other questions you might have.

Derek Dudek | Community Relations Consultant

NextEra Energy Canada, ULC

5500 North Service Road, Burlington, ON L7L 6W6

o:905.335.4904 x18 f:905.335.5731

mobile - 519.318.0237

derek.dudek@nexteraenergy.com

From: [REDACTED]

Sent: Monday, November 07, 2011 12:13 PM

To: Dudek, Derek

Cc: [REDACTED]

Subject: wind trubines and Zurich & District Chamber of Commerce

Hello Mr. Dudek;

I assume that you received our email of September 26, 2011.

I wish to advise that we have read the "Wind Energy News" issue Volume 2, Fall 2011. We received this 3 weeks ago and we note in the project diagrams that the Goshen Project "Wind Energy Centre Area" is exactly the same size as earlier diagrams. Similarly the Wind Energy Centre Area for the Bluewater project is sized the same.

However a short week later we saw a large advertisement in the local papers and then received a letter from you firm which has drastically reduced the size of the Goshen Wind Centre Area such that there are now several kilometers of a distance between the Lake Huron Shore and the Wind Centre Area.

Although we have been told that the wind coming from above Lake Huron is the principal reason that this area along Lake Huron has been suggested for a Wind Centre Area, we are very pleased to see that you recognize the importance of great setbacks from settlement areas. We note in your diagrams that the distance from the Bluewater Lakeshore and Grand Bend is now between 2 3/4 Km and 6 Km. whereas you originally had this area only from 100 to 400 metres away. We are pleased that the Grand Bend and Bluewater Lakeshore persuasive efforts have achieved this setback.

Now the only fair thing for Nextera Energy to do is to move the north boundary for the Goshen Wind Centre Area project from the current County Rd. #84 to a new boundary line running east and west at least 3 km. south of the existing boundary. The 1000 people living in Zurich deserve nothing less.

In addition to the above we are asking for clarity as to the exact road that has been used as the south boundary of the Bluewater Wind Centre Area project. Would you please advise the name of the road?

We will appreciate your quick agreement with our request. This should all be completed before the end of November 2011.

Sincerely



From: [Dudek, Derek](#)
To: [REDACTED]
Bcc: [Geneau, Nicole](#); [Hernandez, Josefen](#); [Shute, Jeremy](#)
Subject: RE: grandbend
Date: Tuesday, November 15, 2011 10:38:00 AM

Hello,

Thank you for your inquiry regarding our wind energy projects in the Grand Bend area. Our Goshen Wind Energy Centre project, is actually the closest in proximity to Grand Bend. We are releasing our draft turbine layout for public review in early December. This draft will show that the closest turbines to Grand Bend are approximately 2km from the very southern end of Grand Bend (ie. Klondyke Road).

Please don't hesitate to contact me if you have any other questions.

Thank you,

Derek Dudek | Community Relations Consultant
NextEra Energy Canada, ULC
5500 North Service Road, Burlington, ON L7L 6W6
o:905.335.4904 x18 f:905.335.5731
mobile - 519.318.0237
derek.dudek@nexteraenergy.com

From: [REDACTED]
Sent: Sunday, November 13, 2011 10:53 AM
To: SharedMailbox, BLUEWATER-WIND
Subject: grandbend

please advise how far the closest wind turbine will be to grandbend. Thanks in advance. [REDACTED]

[REDACTED]

From: [Dudek, Derek](#)
To: [REDACTED]
Bcc: [REDACTED]
Subject: Goshen - response to questions
Date: Tuesday, February 14, 2012 4:11:00 PM
Attachments: [Image002.png](#)

Hello [REDACTED]

Please find below our response to your 10 questions of December 6th, 2011. Our responses follow each numbered question in bold.

1. Do the turbines take electricity to operate?

Yes, as with any type of electrical generation facility, each turbine requires electricity to operate and monitor.

2. Can you show me evidence of the efficiency of your turbines?

This is proprietary information of the manufacturer that cannot be shared for commercial reasons. However, generally the average capacity factor for wind at Goshen is 40%. Capacity factor means that the generator produces its rated capacity 40% of the time. During the remaining 60% of the time the turbine may be producing power but at a level less than 100% of it's capability.

3. Without government subsidies, are your turbines cost effective?

Through constant research and innovation, wind turbines are quickly becoming one of the most cost-effective forms of energy production. The below chart is from the U.S. Department of Energy and shows the estimated costs of all types of new electrical generation by 2016.

Table 1. Estimated Levelized Cost of New Generation Resources, 2016.

Plant Type	Capacity Factor (%)	U.S. Average Levelized Costs (2009 \$/megawatt-hour) for Plants Entering Service in 2016				
		Levelized Capital Cost	Fixed O&M	Variable O&M (including fuel)	Transmission Investment	Total System Levelized Cost
Conventional Coal	85	65.3	3.9	24.3	1.2	94.8
Advanced Coal	85	74.6	7.9	25.7	1.2	109.4
Advanced Coal with CCS	85	92.7	9.2	33.1	1.2	136.2
Natural Gas-fired						
Conventional Combined Cycle	87	17.5	1.9	45.6	1.2	66.1
Advanced Combined Cycle	87	17.9	1.9	42.1	1.2	63.1
Advanced CC with CCS	87	34.6	3.9	49.6	1.2	89.3
Conventional Combustion Turbine	30	45.8	3.7	71.6	3.5	124.5
Advanced Combustion Turbine	30	31.6	5.5	62.9	3.5	103.5
Advanced Nuclear	90	90.1	11.1	11.7	1.0	113.9
Wind	34	83.9	9.6	0.0	3.5	97.0
Wind – Offshore	34	209.3	28.1	0.0	5.9	243.2
Solar PV ¹	25	194.6	12.1	0.0	4.0	210.7
Solar Thermal	18	259.4	46.6	0.0	5.8	311.8
Geothermal	92	79.3	11.9	9.5	1.0	101.7
Biomass	83	55.3	13.7	42.3	1.3	112.5
Hydro	52	74.5	3.8	6.3	1.9	86.4

¹ Costs are expressed in terms of net AC power available to the grid for the installed capacity.

Source: Energy Information Administration, Annual Energy Outlook 2011, December 2010, DOE/EIA-0383(2010)

4. Does ice on the turbines blades affect the sound?

While there is evidence to suggest that ice can affect the sound from turbine blades, all wind energy facilities must be in compliance with Ontario Regulation 359/09, regardless of weather conditions.

5. What studies/research has been completed to list the the affects the turbines might have on children, pregnant women and their unborn fetus, who live in close proximity to multiple turbines? Are these studies done on the turbines that are 1.5MW or larger or on the turbines that are smaller then 1.5MW

We are unaware of scientific or medical studies that have been specifically directed to assess the response of children and pregnant women to wind turbines. We take comfort in the fact that there are thousands of 1.5MW turbines across Europe, Australia and the United States including 4500 operated by NextEra and concerns about children and pregnant woman does not appear to have surfaced around these existing facilities, some of which have been in operation for decades.