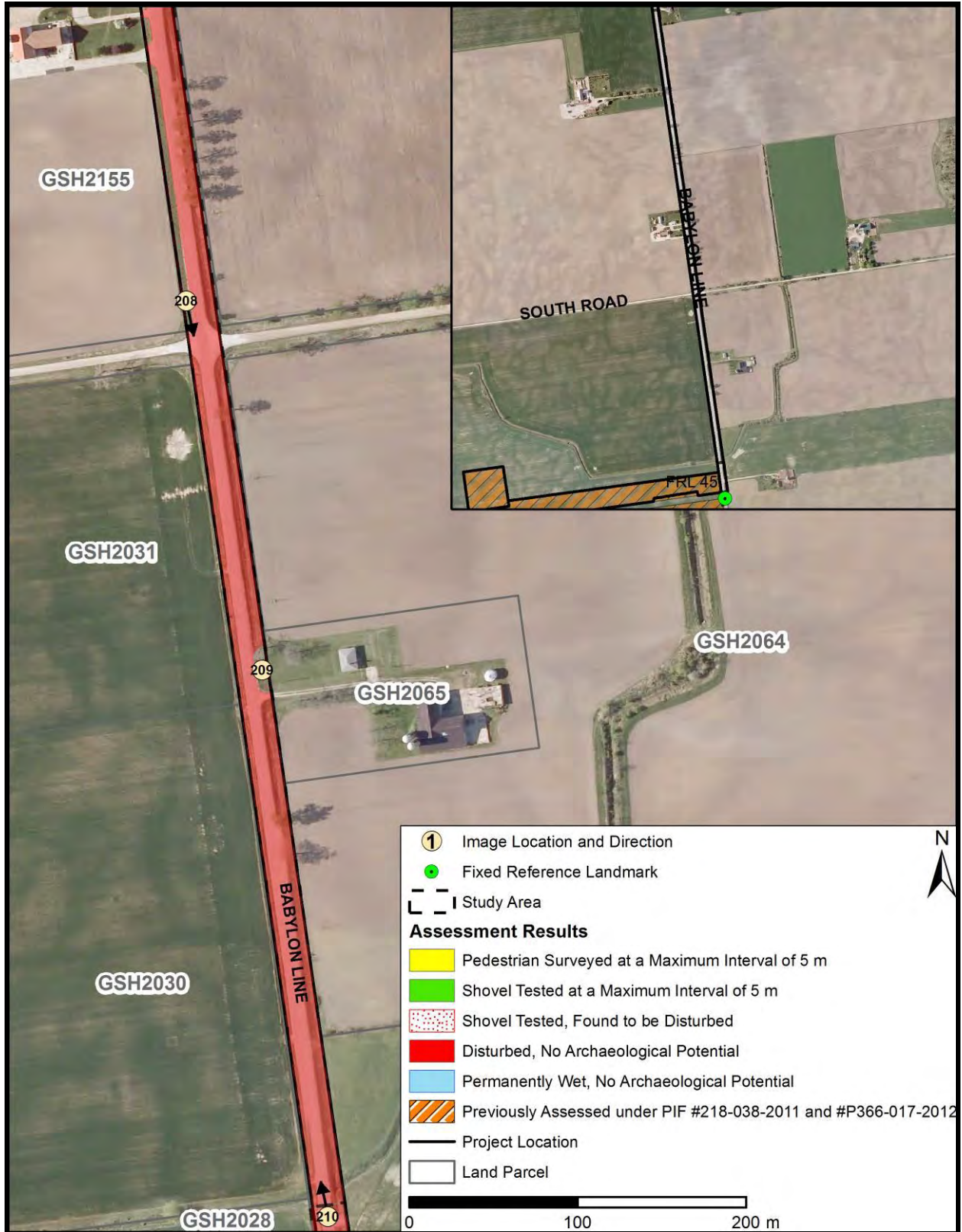
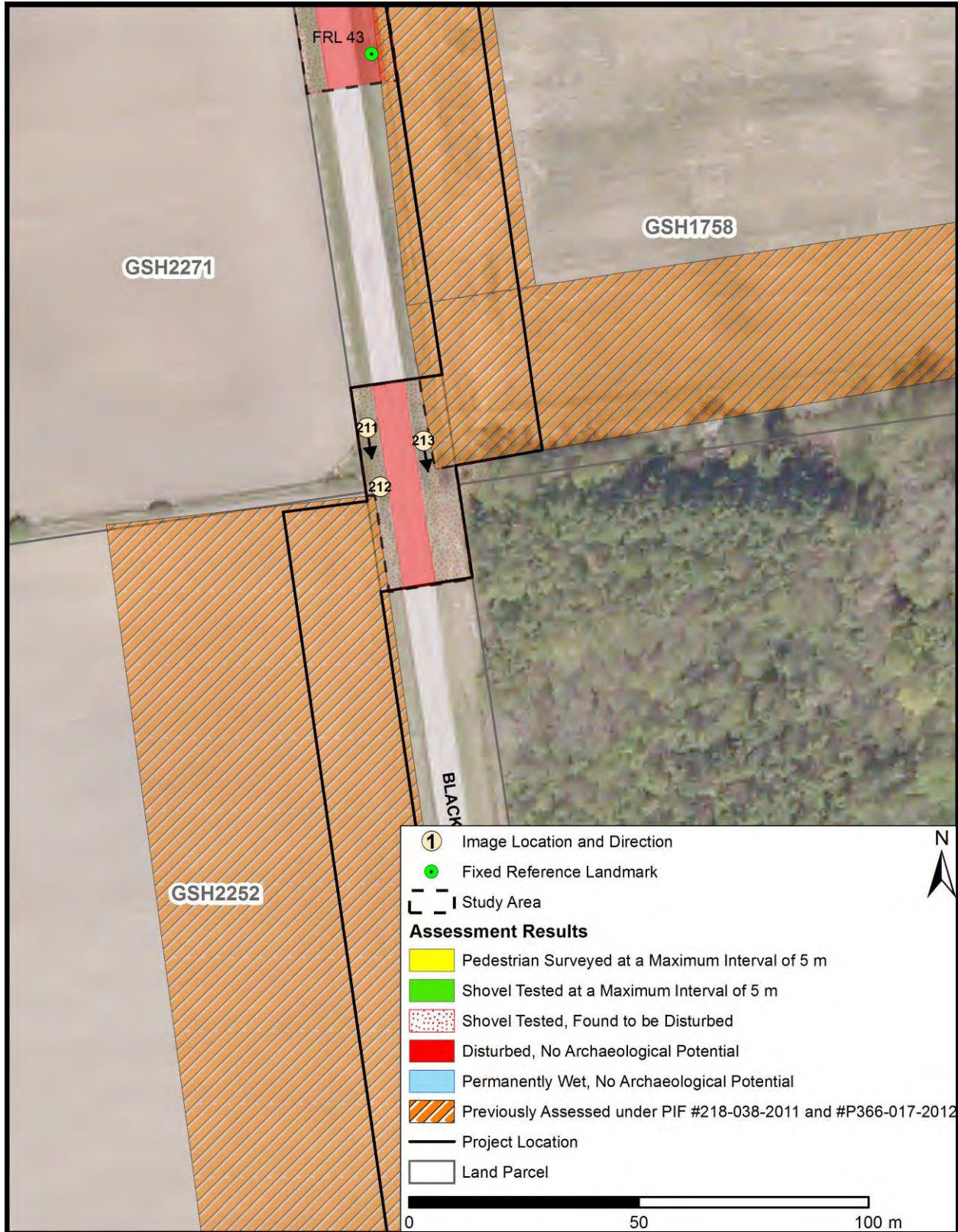


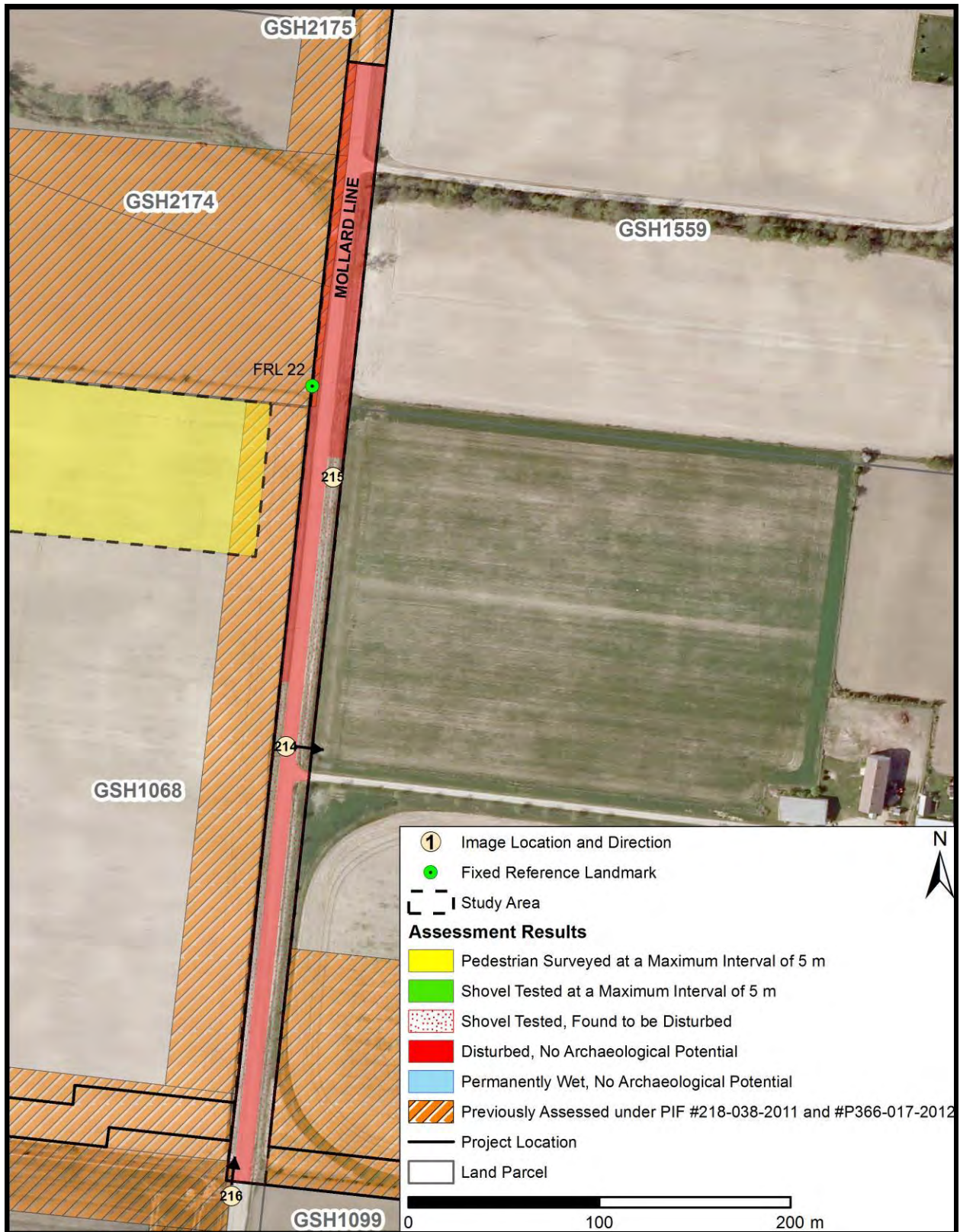
Map 102: Stage 2 Assessment Results – Field Methods and Images for Babylon Line from GSH2058 to GSH2030 (North)
 (Base Imagery Provided by NextEra)



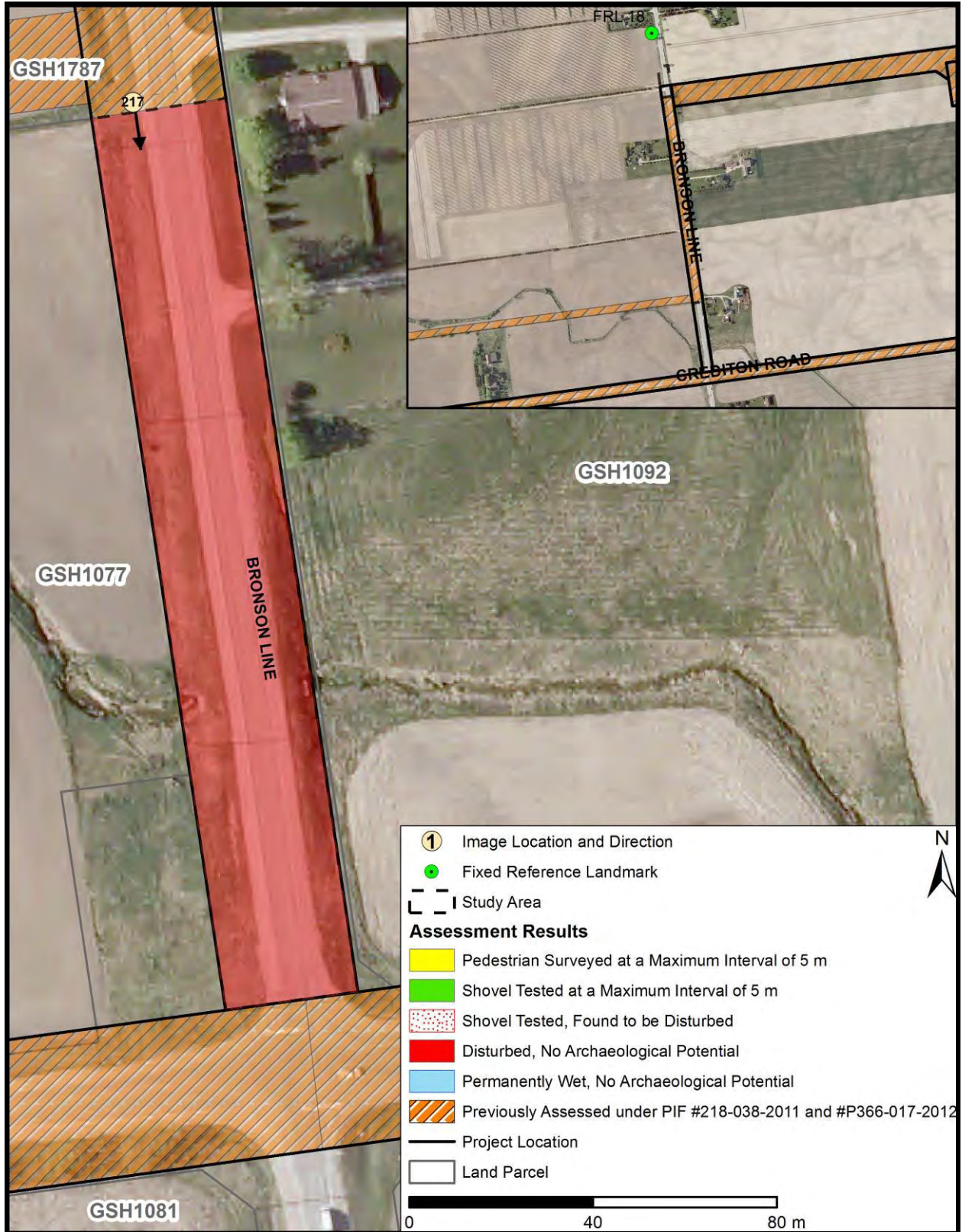
Map 103: Stage 2 Assessment Results – Field Methods and Images for Babylon Line from GSH2058 to GSH2030 (South)
 (Base Imagery Provided by NextEra)



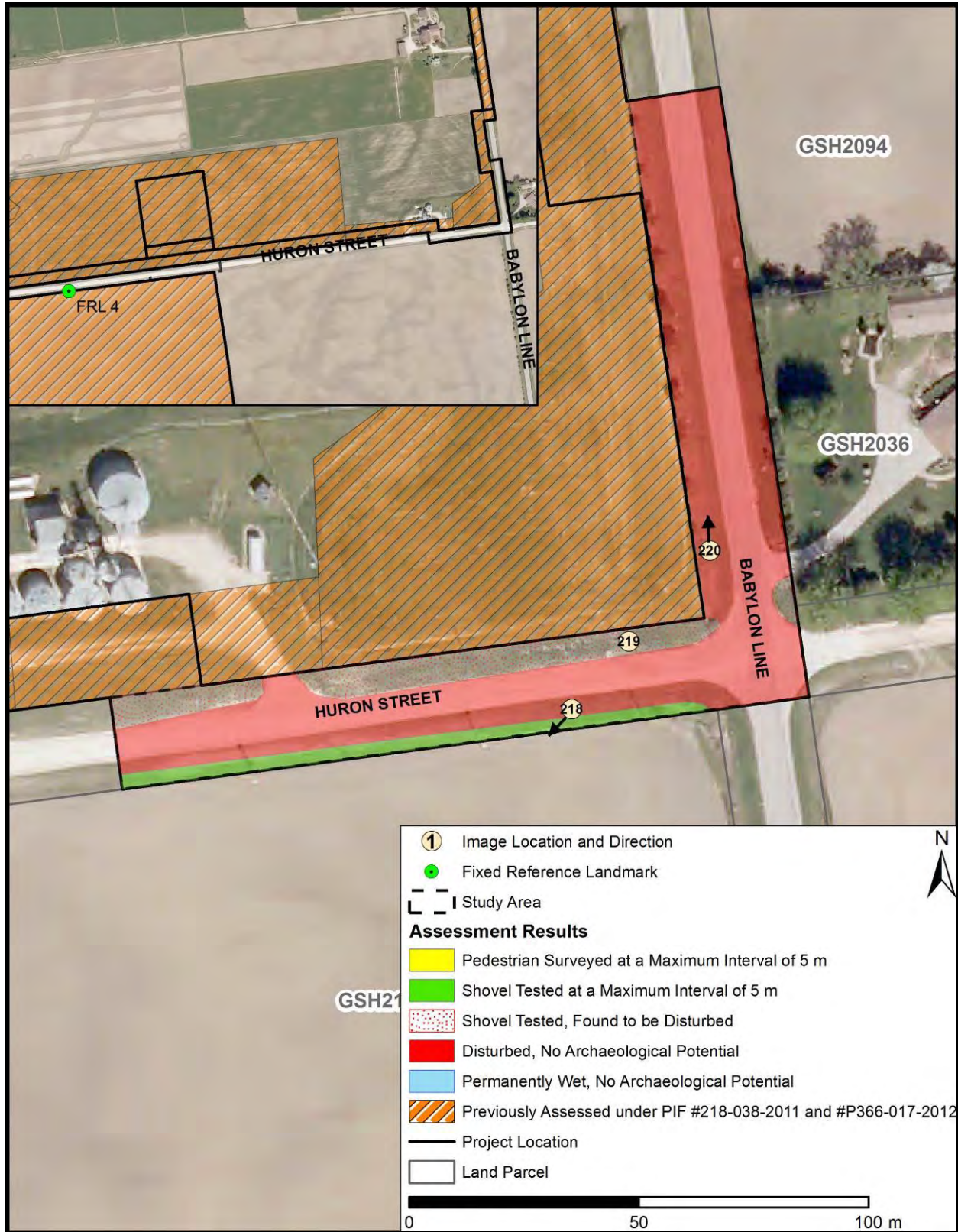
Map 104: Stage 2 Assessment Results – Field Methods and Images for Blackbush Line from GSH1758 to GSH2252
 (Base Imagery Provided by NextEra)

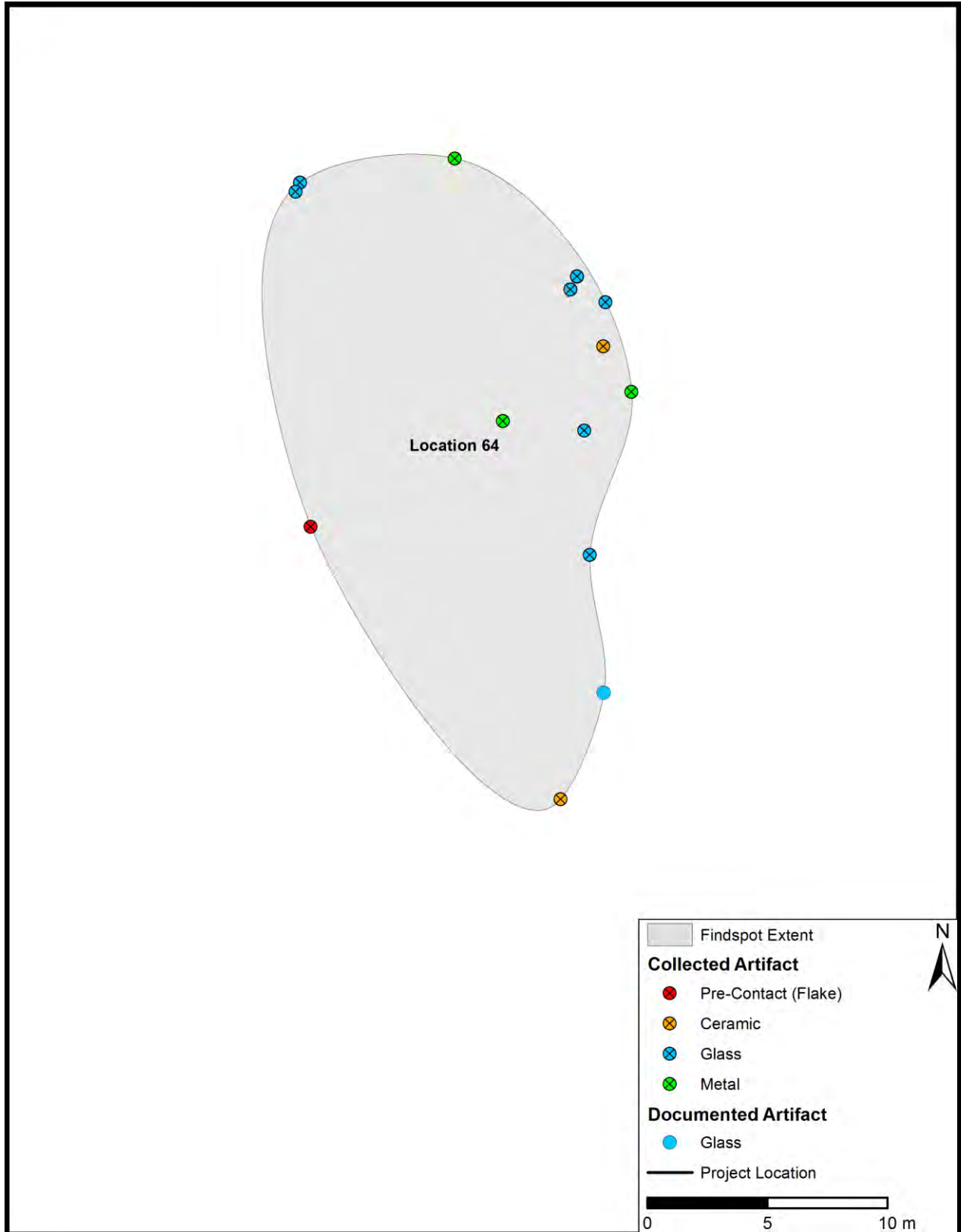


Map 105: Stage 2 Assessment Results – Field Methods and Images for Mollard Line from GSH1559 to GSH1099
 (Base Imagery Provided by NextEra)



Map 106: Stage 2 Assessment Results – Field Methods and Images for Bronson Line at GSH1077
 (Base Imagery Provided by NextEra)





Map 108: Stage 2 Assessment Results – Location 64
(Detailed Site Location Information in Supplementary Documentation)

7.0 BIBLIOGRAPHY AND SOURCES

Adams, N., I. Kenyon and D. Doroszenko

1995 **Field Manual for Avocational Archaeologists in Ontario**. 2nd Ed. North York: The Ontario Archaeological Society Inc.

Archaeological Research Associates Ltd. (ARA)

2013c **Stage 3 Site-Specific Assessment, Location 33 (AhHk-145), Goshen Wind Energy Centre, FIT-FETX82X, Part of Lot 12, River Aux Sables, Municipality of South Huron, Geographic Township of Stephen, Huron County, Ontario**. PIF #P007-510-2013. Archaeological Research Associates Ltd.

2013d **Stage 3 Site-Specific Assessment, Location 47 (AhHj-17), Goshen Wind Energy Centre, FIT-FETX82X, Part of Lot 14, Concession 7, Municipality of South Huron, Geographic Township of Stephen, Huron County, Ontario**. PIF #P007-515-2013. Archaeological Research Associates Ltd.

2013e **Stage 3 Site-Specific Assessment, Location 62 (AhHi-7), Goshen Wind Energy Centre, FIT-FETX82X, Part of Lot 7, Concession 1, Municipality of South Huron, Geographic Township of Usborne, Huron County, Ontario**. PIF #P007-518-2013. Archaeological Research Associates Ltd.

2013f **Stage 4 Mitigation of Development Impacts, Location 62 (AhHi-7), Goshen Wind Energy Centre, FIT-FETX82X, Part of Lot 7, Concession 1, Municipality of South Huron, Geographic Township of Usborne, Huron County, Ontario**. PIF #P089-0037-2013. Archaeological Research Associates Ltd.

Archives of Ontario

2009 **The Evolution of the District and County System, 1788-1899**. Accessed online at: <http://www.archives.gov.on.ca/english/on-line-exhibits/maps/ontario-district-maps.aspx>.

Ausable Bayfield Conservation Authority (ABCA)

2013 **Watershed Report Cards 2013**. Accessed online at: <http://www.abca.on.ca/page.php?page=watershed-report-card-2013>.

Cartography Associates

2009 **David Rumsey Map Collection**. Accessed online at: <http://www.davidrumsey.com/>.

Chapman, L.J. and D.F. Putnam

1984 **The Physiography of Southern Ontario, 3rd Edition**. Toronto: Ontario Geological Survey, Special Volume 2.

Coleman, T.

1978 **The Canada Company**. Stratford: County of Perth, Perth County Historical Board and Cumming Publishers.

Collard, E.

1984 **Nineteenth-Century Pottery and Porcelain**. Second Edition. Mc-Gill-Queen's University Press.

Coyne, J. H.

1895 **The Country of the Neutrals (As Far as Comprised in the County of Elgin): From Champlain to Talbot.** St. Thomas: Times Print.

Cumming, R. (ed.)

1972 **Historical Atlas of the County of Wellington, Ontario.** Reprint Edition of 1906 Publication. Toronto: Historical Atlas Publishing Co.

Davidson, R.J.

1989 *Foundations of the Land Bedrock Geology.* In **The Natural History of Ontario**, edited by J.B. Theberge, pp. 36-47. Toronto: McClelland and Stewart Inc.

Dodd, Christine F., D.R. Poulton, P.A. Lennox, D.G. Smith and G.A. Warrick

1990 *The Middle Ontario Iroquoian Stage.* In **The Archaeology of Southern Ontario to A.D. 1650**, edited by Chris J. Ellis and Neal Ferris, pp. 321-359. Occasional Publications of the London Chapter, OAS Number 5. London: Ontario Archaeological Society Inc.

Dougall, F.

1996 **Between the Fences “Supplementary”: Usborne Township, 1842–1995.** Exeter: Usborne Historians Book Committee.

Ellis, C.J. and Deller, D.B.

1990 *Paleo-Indians.* In **The Archaeology of Southern Ontario to A.D. 1650**, edited by Chris J. Ellis and Neal Ferris, pp. 37-74. Occasional Publications of the London Chapter, OAS Number 5. London: Ontario Archaeological Society Inc.

Ellis, C.J., I.T. Kenyon, and M.W. Spence

1990 *The Archaic.* In **The Archaeology of Southern Ontario to A.D. 1650**, edited by Chris J. Ellis and Neal Ferris, pp. 65-124. Occasional Publication of the London Chapter, OAS Number 5. London: Ontario Archaeological Society Inc.

Eley, B.E. and P.H. von Bitter

1989 **Cherts of Southern Ontario.** Toronto: Royal Ontario Museum.

Finlayson, W.D.

1977 **The Saugeen Culture: A Middle Woodland Manifestation in Southwestern Ontario.** National Museum of Man Mercury Series, Archaeological Survey of Canada Paper No. 61. Ottawa: National Museums of Canada.

Fitzgerald, W.R.

2005 **On the Threshold of a Dream: Paul Kane.** Exhibition Catalogue. Southampton: Bruce County Museum & Cultural Centre.

Fox, W.

1990 *The Middle Woodland to Late Woodland Transition*. In **The Archaeology of Southern Ontario to AD 1650**, edited by Chris J. Ellis and Neal Ferris, pp. 171-188. Occasional Publication of the London Chapter, OAS Number 5. London: Ontario Archaeological Society Inc.

Gentilcore, R.L. and C.G. Head

1984 **Ontario's History in Maps**. Toronto: University of Toronto Press.

Gervais, G.

2004 *Champlain and Ontario (1603-35)*. In **Champlain: The Birth of French America**, edited by R. Litalien and D. Vaugeois, pp. 180-190. Montreal: McGill-Queen's Press.

Golder Associates Ltd. (Golder)

2012a **Stage 1 Archaeological Assessment, NextEra Energy Canada, ULC, Goshen Wind Energy Centre, Various Lots and Concessions, Geographic Townships of Hay, Stephen and Osborne, now Municipalities of Bluewater and South Huron, Huron County, Ontario**. PIFs #P001-608-2010 and #P218-278-2011. Golder Associates Ltd.

2012b **Additional Stage 2 Archaeological Assessment, NextEra Energy Canada, ULC, Goshen Wind Energy Centre, Huron County, Ontario**. PIF #P218-366-2012. Golder Associates Ltd.

2013 **Stage 2 Archaeological Assessment, NextEra Energy Canada, ULC, Goshen Wind Energy Centre, Various Lots and Concessions, Geographic Townships of Hay, Stephen and Osborne, now Municipalities of Bluewater and South Huron, Huron County, Ontario**. PIF #P218-038-2011. Golder Associates Ltd.

H. Belden & Co.

1879 **Illustrated Historical Atlas of the County of Huron, Ontario**. Toronto: H. Belden & Co.

Hoffman, D.W., N.R. Richards and F.F. Morwick

1952 **Soil Survey of Huron County**. Report No. 13 of the Ontario Soil Survey. Guelph: Experimental Farms Service, Canada Department of Agriculture and the Ontario Agricultural College.

Hunt, G.T.

1940 **The Wars of the Iroquois: A Study in Intertribal Trade Relations**. Madison, Wisconsin: University of Wisconsin Press.

Jackson, L. J., C. Ellis, A. V. Morgan and J. H. McAndrews

2000 *Glacial Lake Levels and Eastern Great Lakes Palaeo-Indians*. In **Geoarchaeology: An International Journal**, Volume 15, Number 5, pp. 415-440.

Jones, O. and C. Sullivan

1985 **The Parks Canada Glass Glossary**. National Historic Parks and Sites Branch. Ottawa: Parks Canada and Environment Canada.

Karrow, P.F. and B.G. Warner

1990 *The Geological and Biological Environment for Human Occupation in Southern Ontario*. In **The Archaeology of Southern Ontario to A.D. 1650**, edited by Chris J. Ellis and Neal Ferris, pp. 5–35. Occasional Publication of the London Chapter, OAS Number 5. London: Ontario Archaeological Society Inc.

Kenyon, T.A. and I.T. Kenyon

2008 **19th Century Notes: A Compendium of Notes from the KEWA (Newsletter of the London Chapter, Ontario Archaeology Society) 1980-1988**. London: London Chapter, OAS.

Lajeunesse, E.J.

1960 **The Windsor Border Region: Canada's Southernmost Frontier**. Toronto: The Champlain Society.

Lee, R.

2004 **The Canada Company and the Huron Tract, 1826–1853: Personalities, Profits and Politics**. Toronto: Natural Heritage Inc.

Lennox, P.A. and W.R. Fitzgerald.

1990 *The Culture History and Archaeology of the Neutral Iroquoians*. In **The Archaeology of Southern Ontario to A.D. 1650**, edited by Chris J. Ellis and Neal Ferris, pp. 405-456. Occasional Publication of the London Chapter, OAS Number 5. London: Ontario Archaeological Society Inc.

Lindsey, B.

2013 **Historic Glass Bottle Identification and Information Website**. Accessed online at: <http://www.sha.org/bottle/index.htm>.

Mack, M.

1992 **The History of Stephen Township**. Crediton: The Alymer Express Ltd.

Mason, R.J.

1981 **Great Lakes Archaeology**. New York: Academic Press.

McDonald, J.

1835 **14 – Part of Stanley, Hay & Stephen**. Surveyors Notes. FNB 448.

1836 **2 – Parts of Biddulph, McGillivray, Stephen & Hullett**. Surveyors Notes. FNB 59.

1837 **C.C. 6c – Hay, Stephen & McGillivray**. Surveyors Notes. FNB 447.

McGeorge, W.G.

1939 *Early Settlement and Surveys along the River Thames in Kent County*. In **Kentiana: The Story of the Settlement and Development of the County of Kent**, pp. 25–36. Chatham: The Kent Historical Society.

McGill University

2001 **The Canadian County Atlas Digital Project.** Accessed online at: <http://digital.library.mcgill.ca/countyatlas/default.htm>.

Métis Nation of Ontario (MNO)

2011 **Culture & Heritage: Who are the Métis.** Accessed online at: <http://www.metisnation.org/culture--heritage/who-are-the-metis.aspx>.

Miller, G.L.

1991 *A Revised Set of CC Index Values for Classification and Economic Scaling of English Ceramics from 1787 to 1880.* **Historical Archaeology** 25(1):1–25.

2000 *Telling Time for Archaeologists.* **Northeast Historical Archaeology** 29:1–22.

Ministry of Culture (MCL)

1997 **Conserving a Future for Our Past: Archaeology, Land Use Planning & Development in Ontario. An Educational Primer and Comprehensive Guide for Non-Specialists.** Toronto: Ministry of Culture.

Ministry of Natural Resources (MNR)

2013 **About Ontario's Forests.** Accessed online at: http://www.mnr.gov.on.ca/en/Business/Forests/%20ColumnSubPage/STEL02_163390.html.

Ministry of Tourism and Culture (MTC)

2011 **Standards and Guidelines for Consultant Archaeologists.** Toronto: Ministry of Tourism and Culture.

Ministry of Tourism, Culture and Sport (MTCS)

2013a **Inquiry Concerning Sites within a One Kilometre Radius of the Project Area (Ontario Archaeological Sites Database) and Past Archaeological Work within 50 m of the Project Area.** Via Email, response provided on February 22, 2013. R. Von Bitter, Archaeology Data Coordinator, Ministry of Tourism, Culture and Sport.

2013b **Request for Advice: Goshen Areas.** Via Email, beginning September 5, 2013. J. Sherratt, Team Lead – Archaeology, Ministry of Tourism, Culture and Sport.

Mississaugas of the New Credit First Nation (MNCFN)

2010 **The History of the Mississaugas of the New Credit First Nation.** Hagersville: Mississaugas of the New Credit First Nation.

Mulvany, C.P., G.M. Adam and C.B. Robinson

1885 **History of Toronto and the County of York, Ontario, Volume 1.** Toronto: C. Blackett Robinson.

Murphy, C. and N. Ferris

1990 *The Late Woodland Western Basin Tradition of Southwestern Ontario.* In **The Archaeology of Southern Ontario to A.D. 1650**, edited by Chris J. Ellis and Neal Ferris,

- pp. 189–278. Occasional Publication of the London Chapter, OAS Number 5. London: Ontario Archaeological Society Inc.
- Natural Resources Canada (NRC)
- 2004 **The Atlas of Canada: Ontario Relief**. Accessed online at: http://atlas.nrcan.gc.ca/auth/english/maps/reference/provinceterritoriesrelief/ontario_relief.
- 2010 **The Atlas of Canada: Historical Indian Treaties Time Line**. Accessed online at: <http://atlas.nrcan.gc.ca/auth/english/maps/historical/indiantreaties/historicaltreaties/8>.
- Nelson, L.
- 1968 **Nail Chronology as an Aid to Dating Old Buildings**. Nashville: American Association for State and Local History.
- NextEra Energy Canada (NextEra)
- 2013 **NextEra Energy Canada: Goshen Project**. Accessed online at: <http://www.nexteraenergycanada.com/projects/goshen.shtml>.
- Parks Canada
- 2002 **Database Artifact Inventory Coding Guide**. Unpublished Manuscript. Parks Canada.
- Ramsden, P.G.
- 1990 *The Hurons: Archaeology and Culture History*. In **The Archaeology of Southern Ontario to AD 1650**, edited by Chris J. Ellis and Neal Ferris, pp. 361-384. Occasional Publication of the London Chapter, OAS Number 5. London: Ontario Archaeological Society Inc.
- Ray, A.J.
- 2013 **Hudson's Bay Company**. Accessed online at: <http://www.thecanadianencyclopedia.com/articles/hudsons-bay-company>.
- Robinson, D.
- 1999 **Echoes of Ellice: Ellice Township, 1827-1997**. N.p.: Ellice Township History Book Committee.
- Schmalz, P.S.
- 1977 **The History of the Saugeen Indians**. Ottawa: Ontario Historical Society.
- Smith, D.B.
- 1987 **Sacred Feathers: The Reverend Peter Jones (Kahkewaquonaby) and the Mississauga Indians**. Toronto: University of Toronto Press.
- Smith, W.H.
- 1846 **Smith's Canadian Gazetteer: Comprising Statistical and General Information Respecting all Parts of the Upper Province, or Canada West**. Toronto: H. & W. Rowsell.

Spence, M.W., R.H. Pihl and C. Murphy

1990 *Cultural Complexes of the Early and Middle Woodland Periods*. In **The Archaeology of Southern Ontario to A.D. 1650**, edited by Chris J. Ellis and Neal Ferris, pp. 125-170. Occasional Publication of the London Chapter, OAS Number 5. London: Ontario Archaeological Society Inc.

Statistics Canada

2013 **2011 Census Profile**. Accessed online at: <http://www12.statcan.ca/census-recensement/2011/dp-pd/prof/index.cfm?Lang=E>.

Stanley History Committee (SHC)

1986 **Township of Stanley History: 1836-1986**. Zurich: A.B. Printing.

Sullivan, C.

1983 *The Bottles of Northrop & Lyman, A Canadian Drug Firm*. **Material Culture Review** 18. Nova Scotia: Cape Breton University.

Surtees, R.J.

1994 *Land Cessions, 1763-1830*. In **Aboriginal Ontario: Historical Perspectives on the First Nations**, edited by E.S. Rogers and D.B. Smith, pp. 92-121. Toronto: Dundurn Press.

Sutton, M.Q. and B.S. Arkush

2002 **Archaeological Laboratory Methods: An Introduction**. 3rd Edition. USA: Kendal/Hunt Publishing Company.

Texas A&M University (TAMU)

2013 **Evolution of English Household Tableware: Period VI (1820s-1900)**. Accessed online at: <http://nautarch.tamu.edu/class/313/ceramics/period-6.htm>.

W.J. Gage and Co.

1886 **Gage's County Atlas**. Toronto: W.J. Gage and Co.

Warrick, G.

2000 *The Precontact Iroquoian Occupation of Southern Ontario*. In **Journal of World Prehistory**, Volume 14, Number 4, pp. 415-456.

2005 *Lessons from the Past*. In **Grand Actions**, Volume 10, No. 3, pp. 2-4. Cambridge: The Grand River Conservation Authority.

Williamson, R.F.

1990 *The Early Iroquoian Period of Southern Ontario*. In **The Archaeology of Southern Ontario to A.D. 1650**, edited by Chris J. Ellis and Neal Ferris, pp. 291-320. Occasional Publications of the London Chapter, OAS Number 5. London: Ontario Archaeological Society Inc.

Williamson, R.F. (ed.)

2008 **Toronto: A Short Illustrated History of its First 12,000 Years.** Toronto: James Lorimer & Company Ltd.

Wright, J.V.

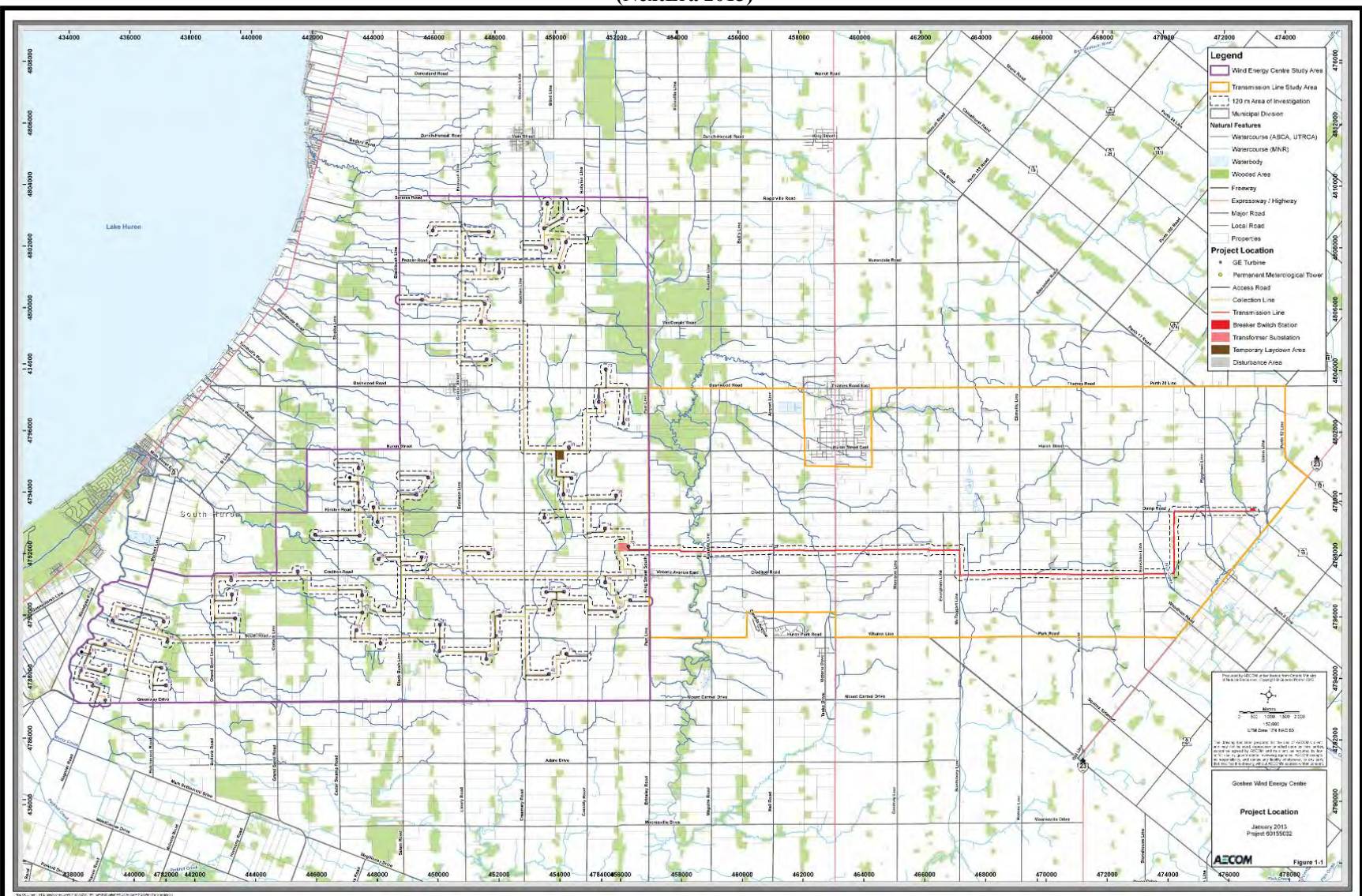
1972 **Ontario Prehistory: An Eleven-Thousand-Year Archaeological Outline.** Archaeological Survey of Canada, National Museum of Man. Ottawa: National Museums of Canada.

Zurich Ontario

2006 **The History of Zurich.** Accessed online at: http://www.zurich-ontario-canada.com/Zurich_History.htm.

APPENDICES

Appendix A: Project Mapping for the Goshen Wind Energy Centre (NextEra 2013)



Appendix B: Artifact Registry

| Record | Location | Unit | Date | Freq. | Group | Material | Object Type | Object Name | Datable Attribute | Date Range | Comments | Heat Altered | Box |
|--------|----------|---------|------------|-------|--------------------------|-------------------|-------------------|----------------------------|---|------------------|---|--------------|------|
| 1 | 64 | Surface | 20-08-2013 | 2 | Glass Food Related | Glass | Storage Container | Bottle (Unidentifiable) | | | | No | A257 |
| 2 | 64 | Surface | 20-08-2013 | 2 | Glass Food Related | Glass | Storage Container | Bottle (Unidentifiable) | | | Bright Green | No | A257 |
| 3 | 64 | Surface | 20-08-2013 | 1 | Glass Non-Food Related | Glass | Miscellaneous | Melted | | | Olive Coloured | Yes | A257 |
| 4 | 64 | Surface | 20-08-2013 | 1 | Glass Food Related | Glass | Storage Container | Bottle (Unidentifiable) | Enameled Label (Applied Coloured Label) | 1935–Present | White Stripe Label / Bright Green Coloured | No | A257 |
| 5 | 64 | Surface | 20-08-2013 | 1 | Glass Food Related | Glass | Storage Container | Beer Bottle | Machine Made Bottle | 1899–Present | Amber Coloured | No | A257 |
| 6 | 64 | Surface | 20-08-2013 | 1 | Glass Food Related | Glass | Storage Container | Closure | | | Canning Jar Lid / "...ONT..." / Aqua Coloured | No | A257 |
| 7 | 64 | Surface | 20-08-2013 | 1 | Glass Food Related | Glass | Storage Container | Bottle (Unidentifiable) | | | Deep Blue Green | No | A257 |
| 8 | 64 | Surface | 20-08-2013 | 1 | Ceramic Food Related | Stoneware (Fine) | Storage Container | Storage (Unidentifiable) | Plain | ca. 1630–Present | Brown Slip Exterior | No | A257 |
| 9 | 64 | Surface | 20-08-2013 | 1 | Ceramic Food Related | Porcelaneous Ware | Tableware | Tableware (Unidentifiable) | Plain | ca. 1820–Present | | No | A257 |
| 10 | 64 | Surface | 20-08-2013 | 1 | Aboriginal | Selkirk Chert | Informal Tool | Multi-Tool | | | Ovoid Biface and Thumbnail Scraper | No | A257 |
| 11 | 64 | Surface | 20-08-2013 | 2 | Architectural | Ferrous | Hardware | Nail | Cut | ca.1830–1890 | | No | A257 |
| 12 | 64 | Surface | 20-08-2013 | 1 | Non-Architectural Metal | Ferrous | Miscellaneous | Scrap Metal | | | | No | A257 |
| 13 | 64 | Surface | 20-08-2013 | 1 | Ceramic Non-Food Related | Porcelain | Personal Care | Toiletry Jar | Northrop & Lyman Company | ca. 1854–1980 | "MILLER'S PREPARED GLY...; FOR CHAPPED...; TOUJOURS A PR...; TRADE..." / Millers Prepared Glycerine for Chapped Hands, Sore Lips, Sunburns & C. | No | A257 |