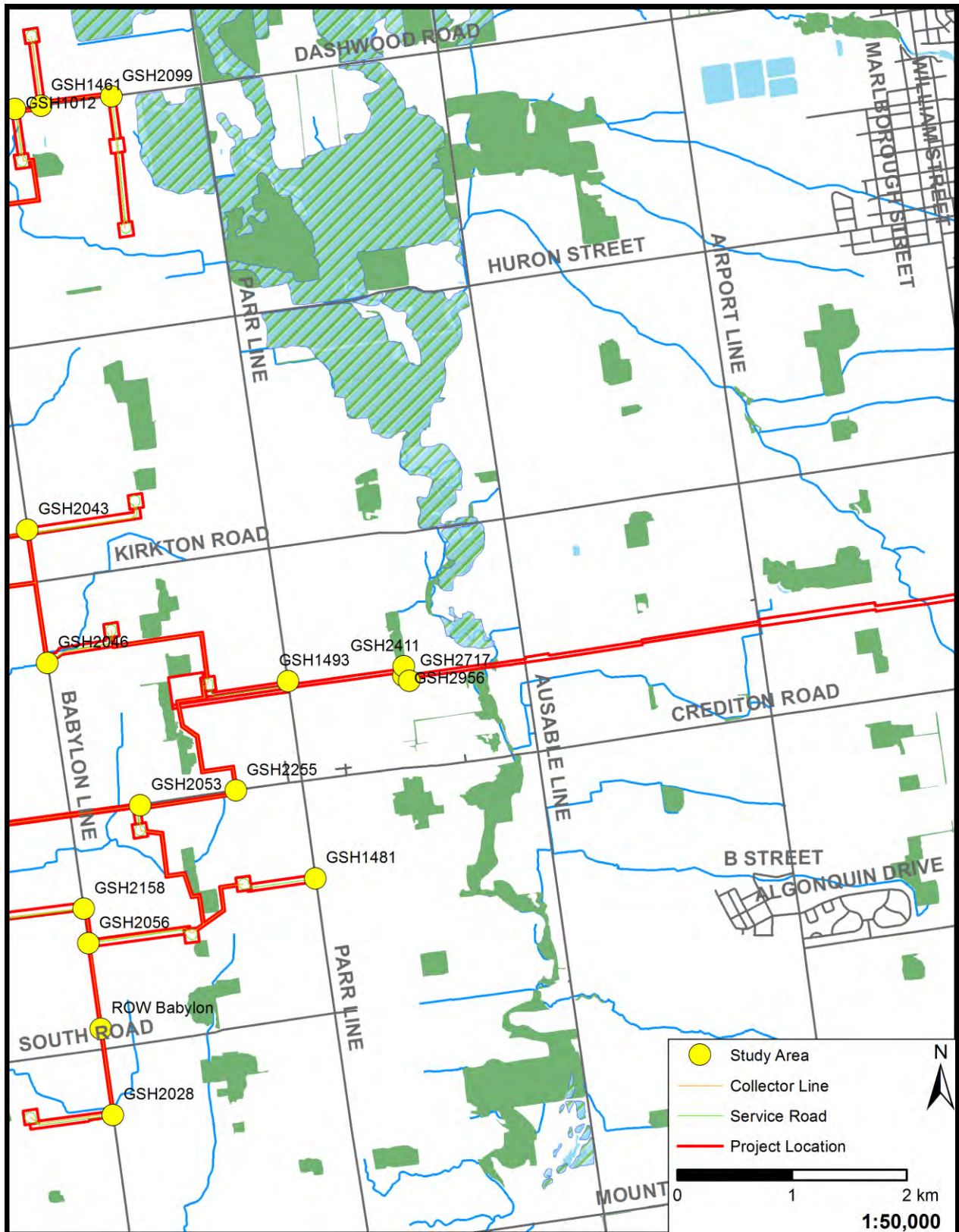
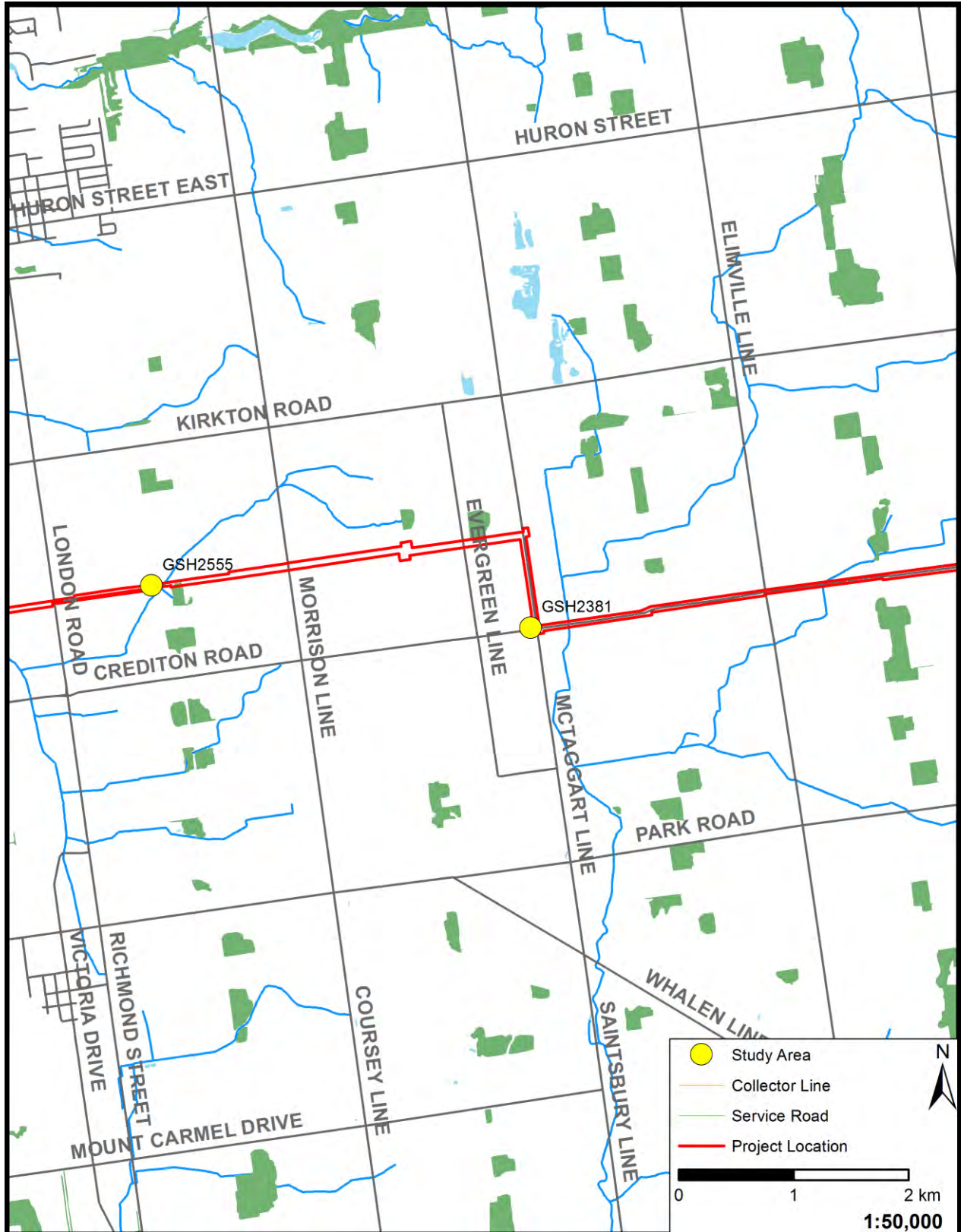


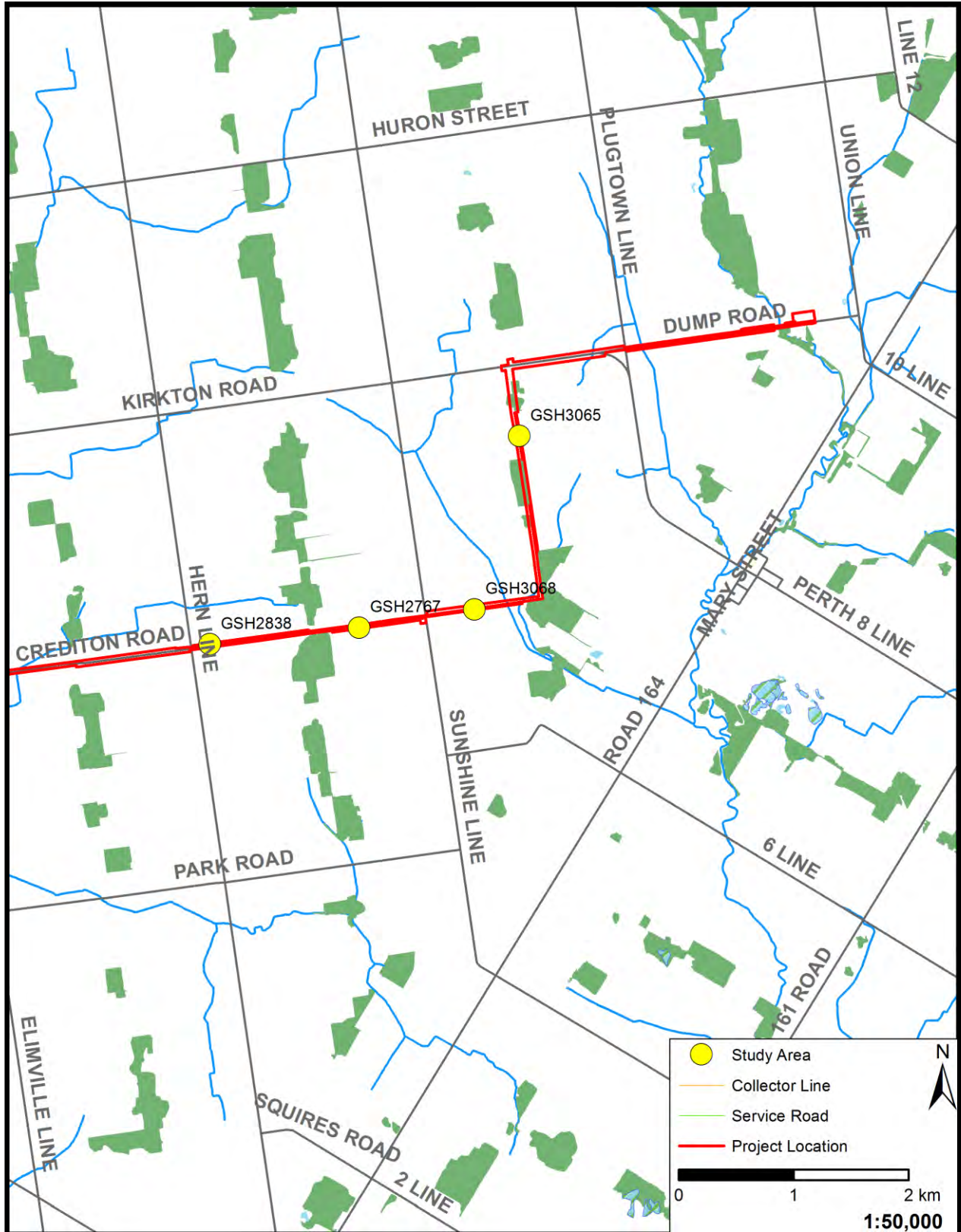
**Map 4: View of the West-Central Part of the Project Location**  
 (Produced by ARA under licence from Ontario MNR, © Queens Printer 2013)



**Map 5: View of the Central Part of the Project Location**  
 (Produced by ARA under licence from Ontario MNR, © Queens Printer 2013)

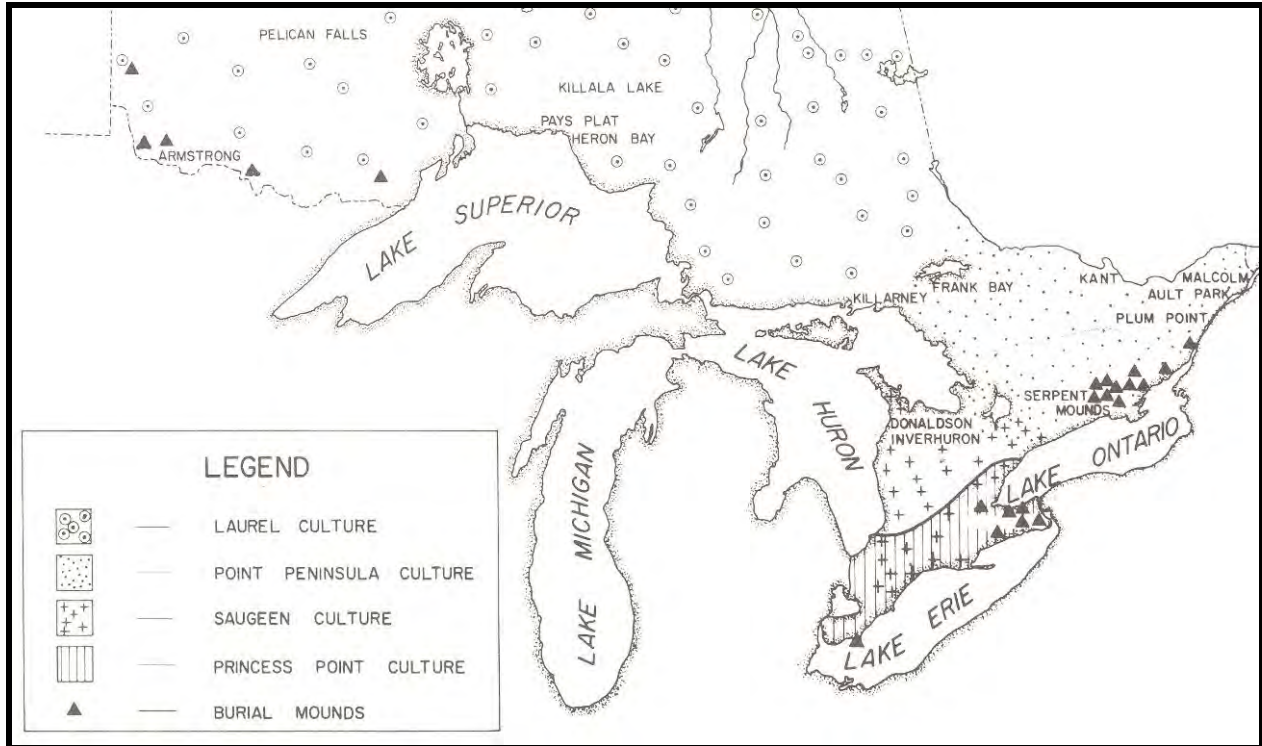




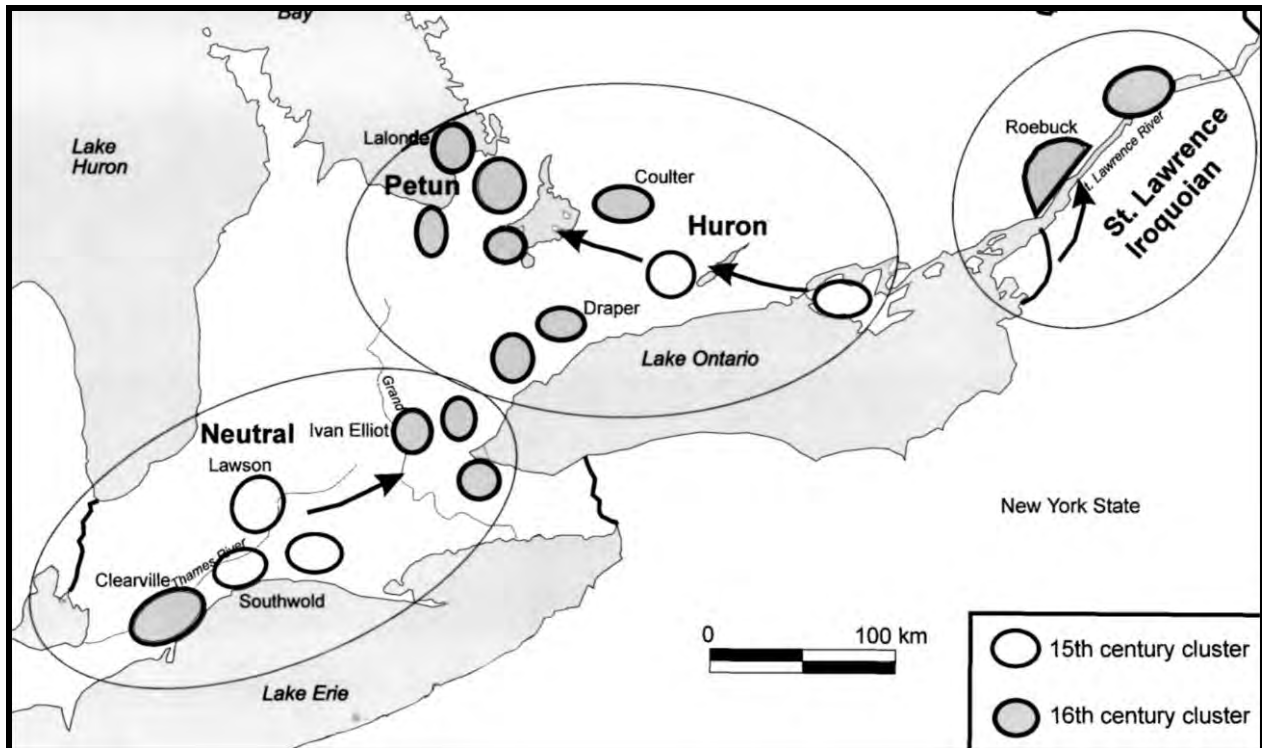


**Map 7: View of the Eastern Part of the Project Location**  
 (Produced by ARA under licence from Ontario MNR, © Queens Printer 2013)





**Map 8: Middle Woodland Period Complexes**  
(Wright 1972:Map 4)

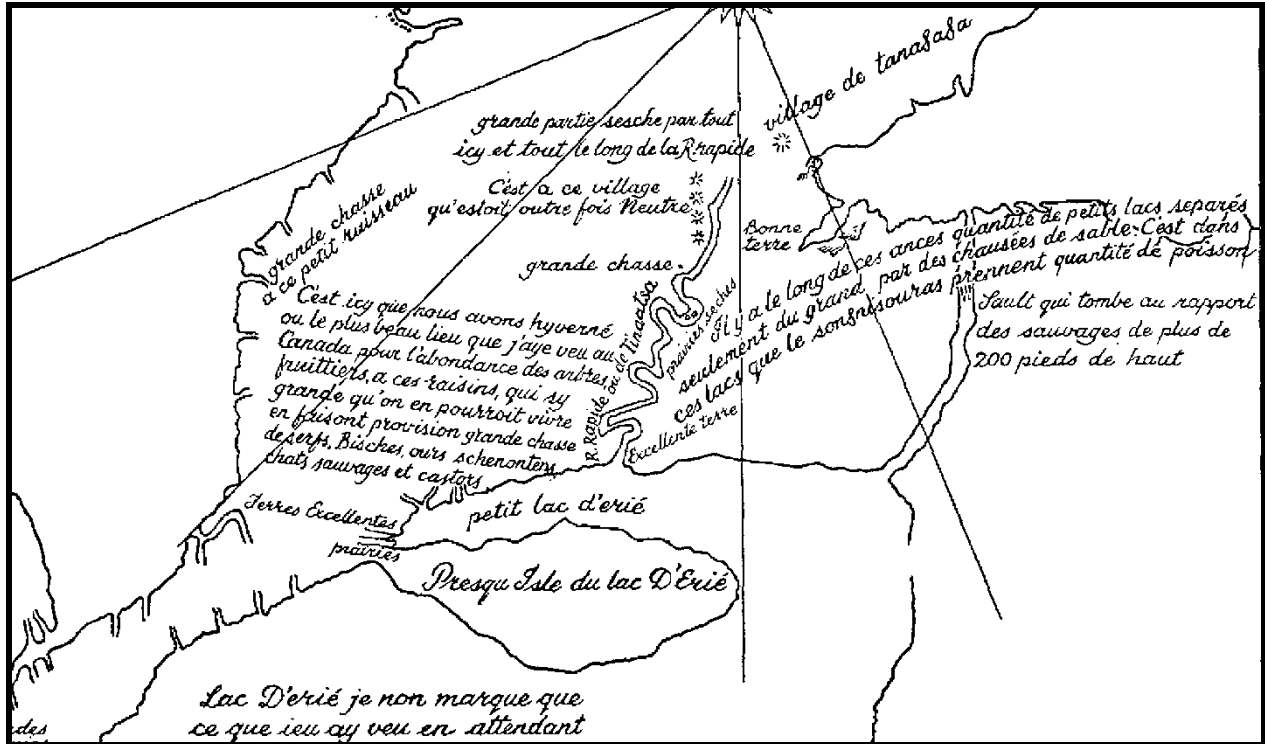


**Map 9: Pre-Contact Iroquoian Site Clusters**  
(Warrick 2000:Figure 10)









Map 12: Detail from the Map of Galinée's Voyage (1670)  
(Lajeunesse 1960:Map 2)



Map 13: Detail from H. Popple's A Map of the British Empire in America (1733)  
(Cartography Associates 2009)





**Map 14: Detail from R. Sayer and J. Bennett's *General Map of the Middle British Colonies in America* (1776)  
(Cartography Associates 2009)**



**Map 15: Detail from D.W. Smyth's *A Map of the Province of Upper Canada* (1800)  
(Cartography Associates 2009)**



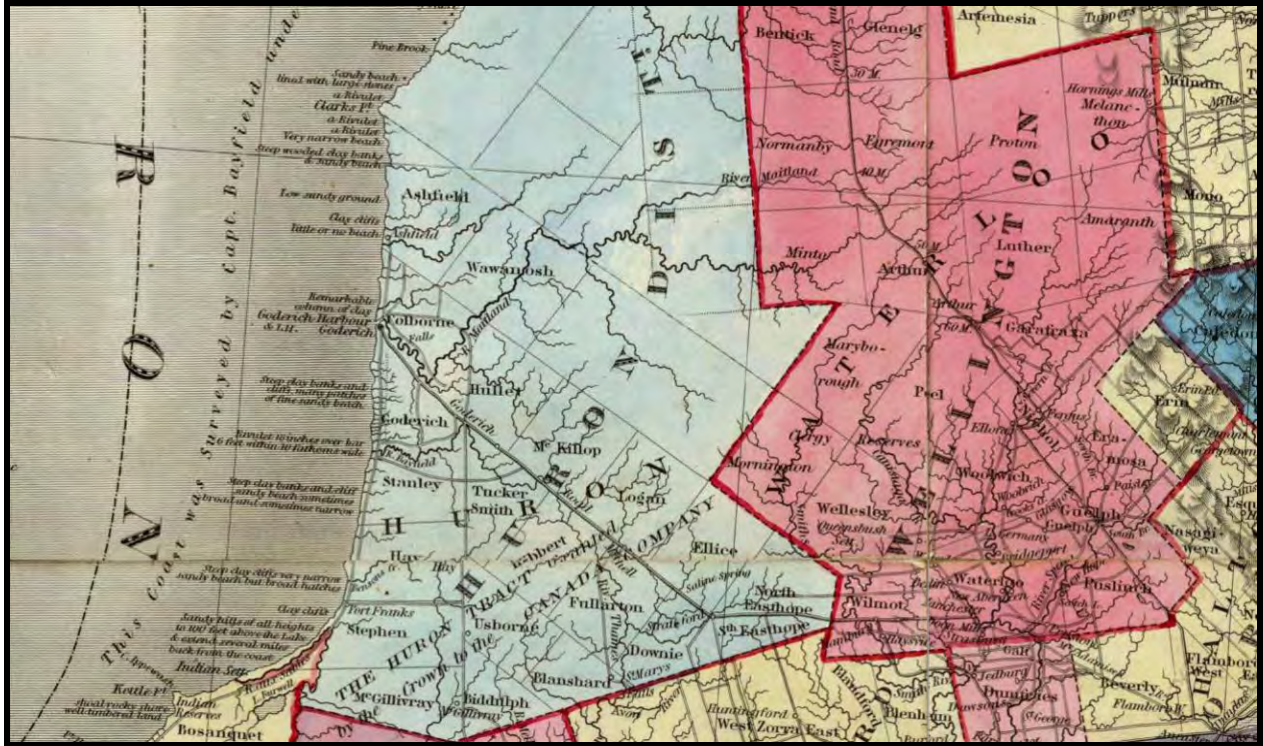


Map 16: Detail from J. Purdy's *A Map of Cabotia* (1814)  
(Cartography Associates 2009)

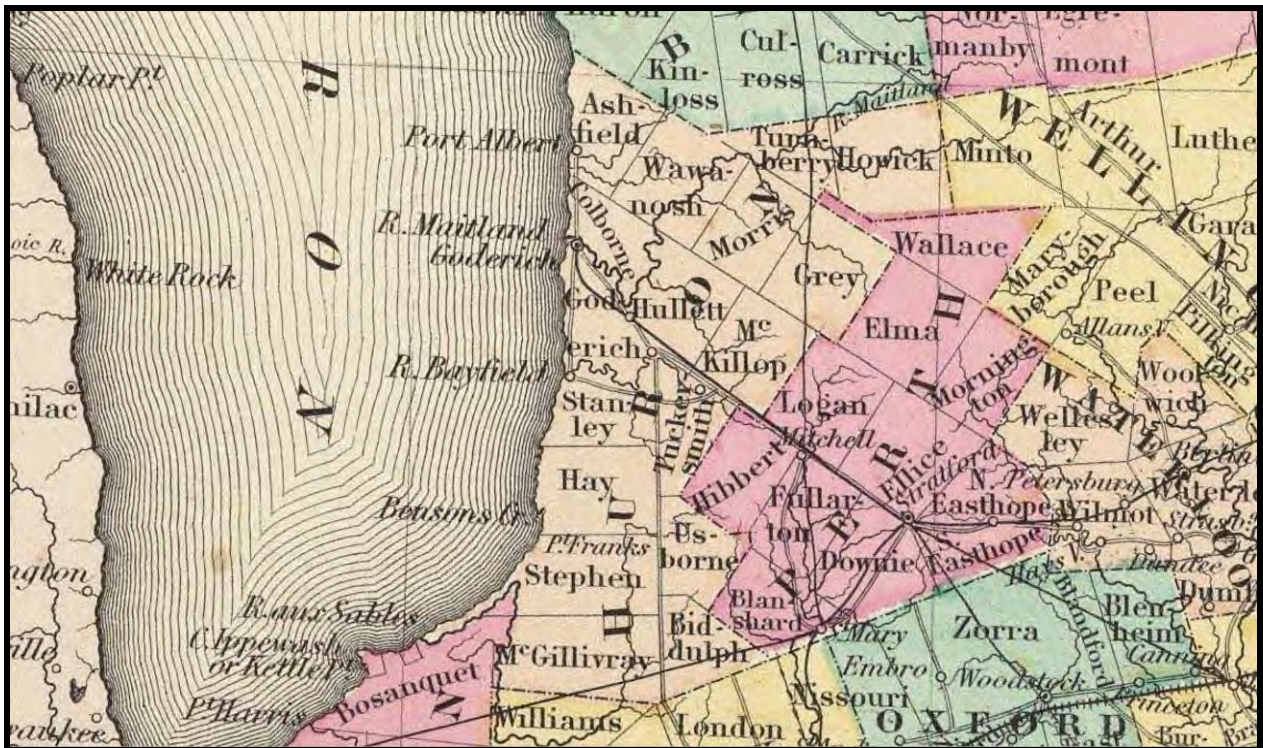


Map 17: Detail from J. Arrowsmith's *Upper Canada* (1837)  
(Cartography Associates 2009)



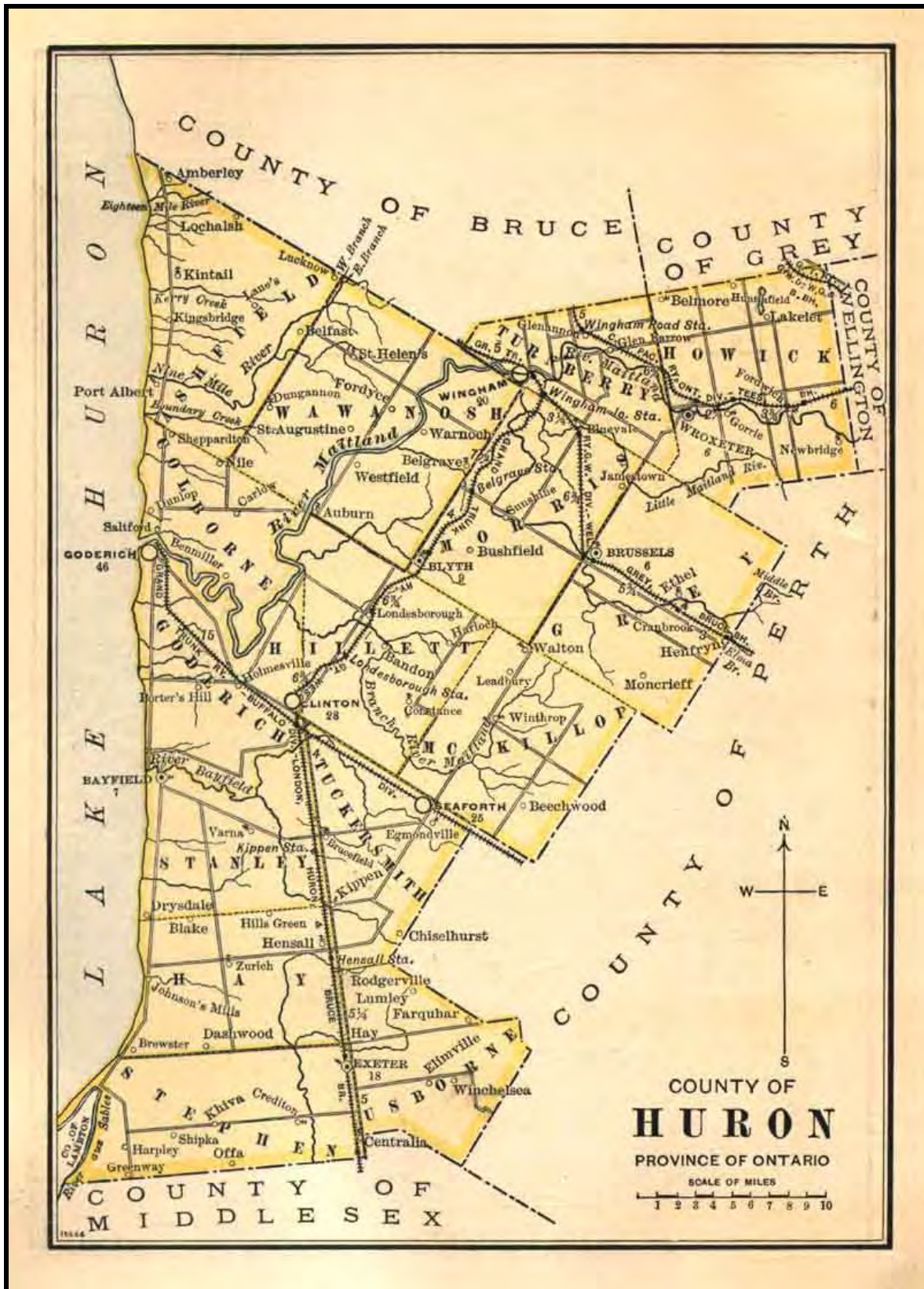


Map 18: Detail from J. Bouchette's *Map of the Provinces of Canada* (1846)  
(Cartography Associates 2009)



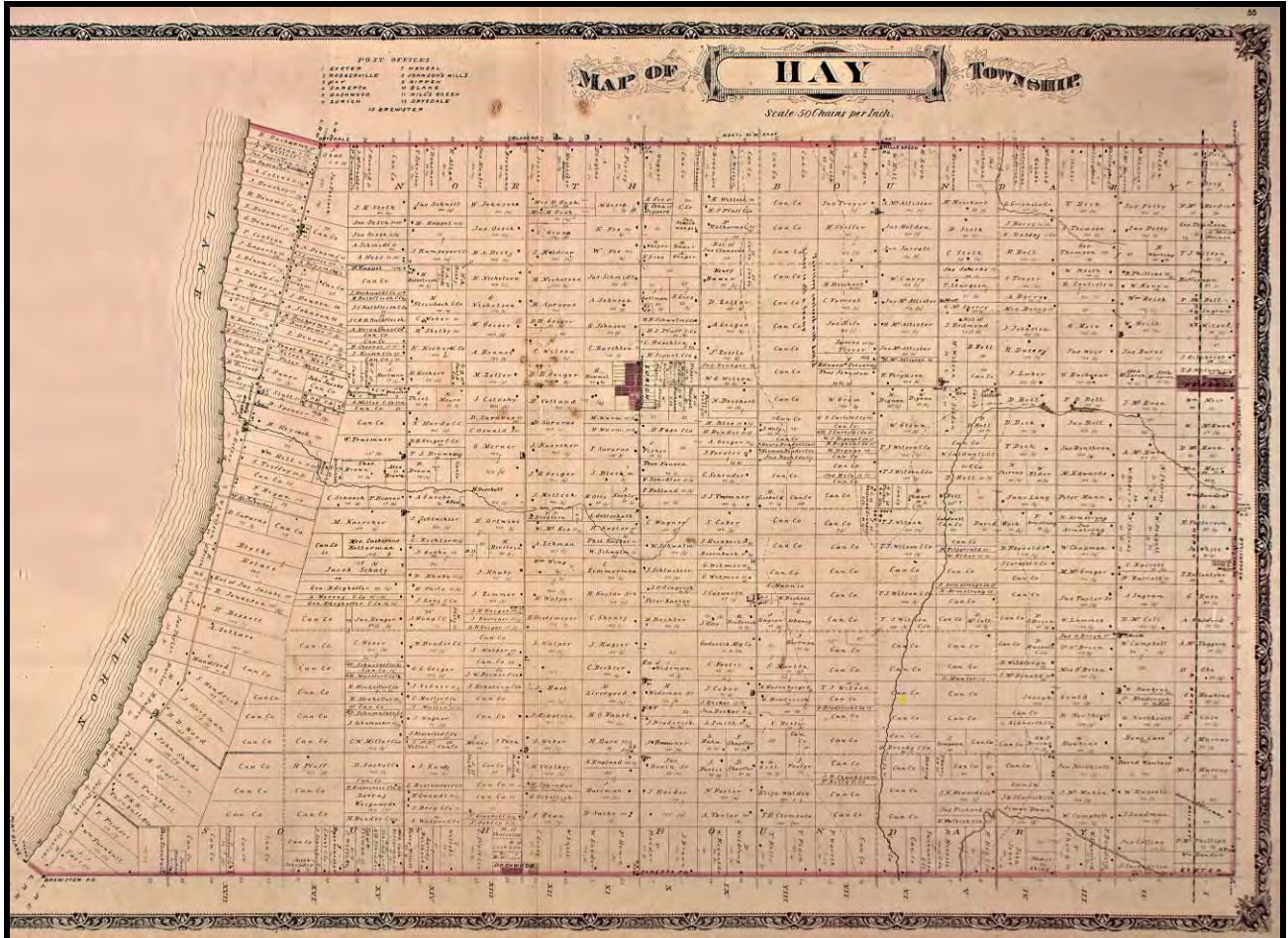
Map 19: Detail from G.W. Colton's *Canada West* (1856)  
(Cartography Associates 2009)





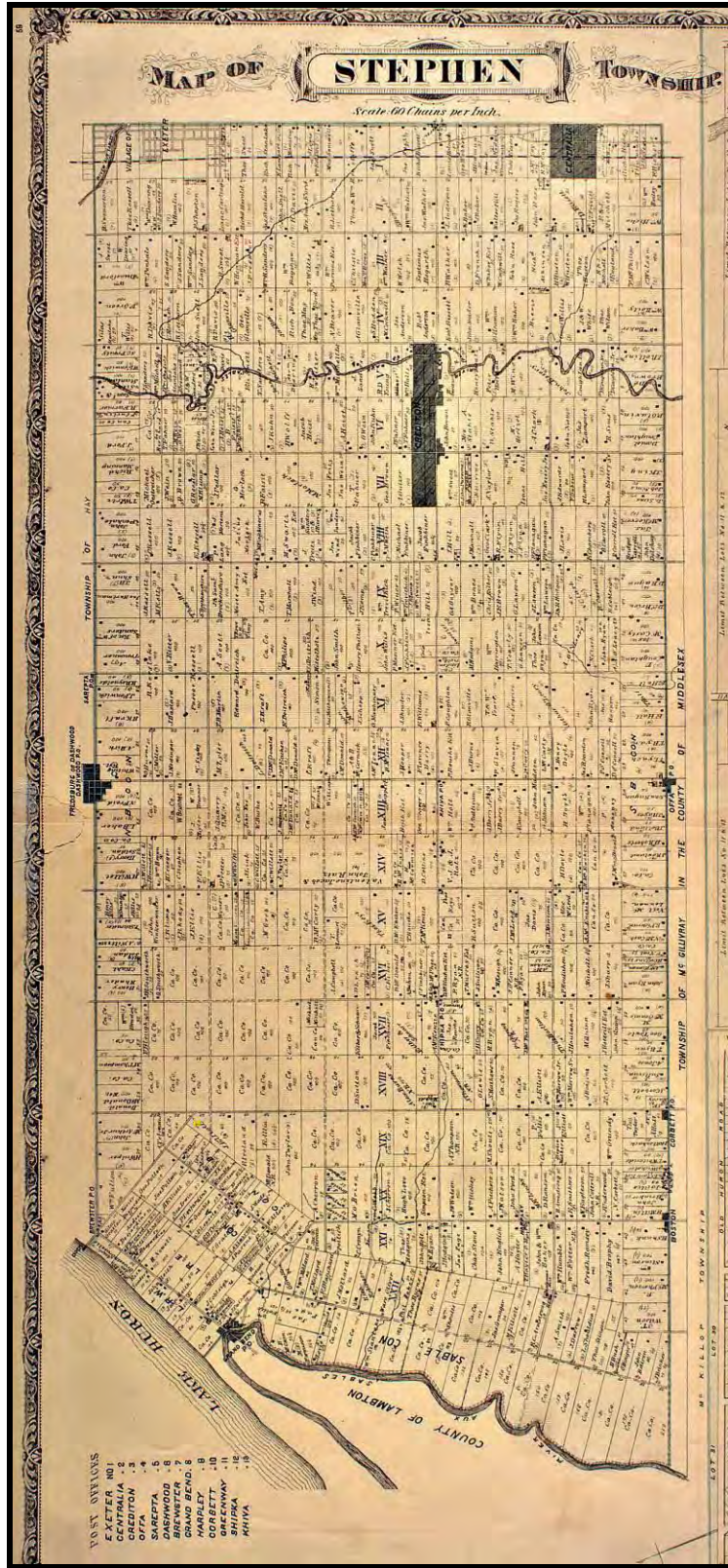
Map 20: Huron County from W.J. Gage and Co.'s *Gage's County Atlas* (1886)  
(W.J. Gage and Co. 1886)





Map 21: The Township of Hay from H. Belden & Co.'s *Illustrated Historical Atlas of the County of Huron* (1879) (McGill University 2001)





Map 22: The Township of Stephen from H. Belden & Co.'s *Illustrated Historical Atlas of the County of Huron* (1879) (McGill University 2001)