

APPENDIX C: ARTIFACT PHOTO PLATES



Plate 37: Representative Sample of Location 4: Left: Aqua Bottle – Oil Finish (Cat.10), Aqua Bottle – Patent Finish (Cat. 15), Aqua bottle glass fragment (Cat.4), Torpedo-shaped bottle glass (Cat.3).







Plate 40: Representative Sample of Location 5: Top/Left: RWE, blue transfer print (Cat.49), RWE, green transfer print (Cat.15), RWE, green transfer print (Cat.54); **Bottom/Left:** RWE, blue stamped (Cat.99), Semi-Porcelain, gold gilding (Cat.86), Semi-Porcelain, decal ware (Cat.69).



Plate 41: Representative Sample of Location 5: Top/Left: RWE, green transfer print (Cat.48), yellowware, undecorated (Cat.82), RWE, black transfer print (Cat.467); **Bottom/Left:** RWE, green transfer print (Cat.153), RWE, blue transfer print (Cat.34), Semi-Porcelain, moulded (Cat.36), Yellowware – Rockingham (Cat.149).



Plate 42: Representative Sample of Location 5: Left: bottle cap (Cat.157), black plastic button (Cat.169), horse shoe nail (Cat.124).



Plate 43: Representative Sample of Location 5: Left: clear bottle glass (Cat.80), aqua furniture coaster (Cat.53).

APPENDIX D: ARTIFACT CATALOGUE

TABLE 9: THE EURO-CANADIAN CERAMIC ARTIFACTS FROM THE LOCATION 4 (BBHE-3)

Site Location 1005: Euro-Canadian Ceramic Artifact Catalogue											
Site #	Layer	Cat#	Identification Category	Artifact Description	Ceramic Ware	Ceramic Description & Technique	Portion	N	Begin Date	End Date	Comments
1005	Surface	5	Tableware	Unidentifiable	RWE	Undecorated	Body	2	1830		(1) foot ring present - likely teacup fragment
1005	Surface	11	Tableware	Unidentifiable	RWE	Red Painted Band	Rim	1	1830		
1005	Surface	13	Tableware	Unidentifiable	RWE	Blue Bandedware	Body	1	1830	1850	
1005	Surface	14	Tableware	Unidentifiable	RWE	Red Stamped	Body	1	1843	1885	floral
1005	Surface	17	Tableware	Teaware	RWE	Brown Stamped	Body	2	1843	1885	teapot/handle fragment; floral
1005	Surface	19	Tableware	Unidentifiable	RWE	Moulded	Rim	2	1830		moulded - ribbed along edge

TABLE 10: THE EURO-CANADIAN NON-CERAMIC ARTIFACT CATALOGUE FROM THE LOCATION 4 (BBHE-3)

Site Location 1005: Euro-Canadian Ceramic Artifact Catalogue											
Site #	Layer	Cat#	Identification Category	Material	Artifact Description	Portion	N	Begin Date	End Date	Comments	
1005	Surface	1	Architecture	Red Clay	Brick	Fragment	1				
1005	Surface	2	Household Item	Coloured Glass	Aqua Bottle Glass	Base	1			embossed lettering: "S"; rectangular- shaped base	
1005	Surface	3	Household Item	Coloured Glass	Aqua Bottle Glass	Body	1			torpedo-shaped bottle fragment	
1005	Surface	4	Household Item	Coloured Glass	Aqua Pharmaceutical Bottle	Body	1	1840	1945	embossed lettering: Dr. S.N. Thomas Eelectric Oil	
1005	Surface	6	Household Item	Coloured Glass	Purple Bottle Glass	Base	1			embossed lettering: "604"; rectangular-shaped base	
1005	Surface	7	Architecture	Clear Glass	Window Glass	Incomplete	2			thick	
1005	Surface	8	Household Item	Coloured Glass	Amber Bottle Glass	Body	1				
1005	Surface	9	Personal	White Ball Clay	Smoking Pipe Stem	Fragment	2			plain	
1005	Surface	10	Household Item	Coloured Glass	Aqua Bottle - Finish	Fragment	1	1905		oil finish	
1005	Surface	12	Architecture	Yellow Clay	Brick	Fragment	1			yellow	
1005	Surface	15	Household Item	Coloured Glass	Aqua Bottle - Finish	Fragment	1	1850		Patent Finish - post 1850	
1005	Surface	16	Architecture	Metal, Iron	Machine Cut Nail	Incomplete	8	1830			
1005	Surface	18	Tableware	Bone/Metal	Utensil Handle	Fragment	1				
1005	Surface	20	Household Item	Coloured Glass	Olive Green Bottle Glass	Base - Body	2				
1005	Surface	21	Household Item	Coloured Glass	Aqua Bottle Glass	Base - Body	6			(1) rectangular-shaped base	
1005	Surface	22	Tableware	Metal	Spoon	Fragment	1			bowl portion	
1005	Surface	23	Architecture	Metal, Iron	Padlock	Incomplete	1				
1005	Surface	24	Hardware	Metal	Strap Claw Hammer	Fragment	1			claw portion	
1005	Surface	25	Misc. Metal	Metal	Misc. Metal Object	Fragment	1				

TABLE 11: THE EURO-CANADIAN CERAMIC ARTIFACT CATALOGUE FROM LOCATION 5

Site Location 5: Euro-Canadian Ceramic Artifact Catalogue											
Site #	TP #	Cat#	Identification Category	Artifact Description	Ceramic Ware	Ceramic Description & Technique	Portion	N	Begin Date	End Date	Comments
5	25	4	Tableware	Unidentifiable	Semi-Porcelain	Undecorated	Body	1			
5	25	5	Tableware	Unidentifiable	Semi-Porcelain	Moulded	Rim	1			moulded - floral
5	25	6	Tableware	Unidentifiable	RWE	Green Transfer Print	Body	1	1830		floral; exfoliated; small fragment
5	25	8	Tableware	Unidentifiable	RWE	Undecorated	Body	8	1830		
5	25	9	Tableware	Unidentifiable	Semi-Porcelain	Gold Transfer Print	Body	1			gold gilding - floral design
5	49	12	Tableware	Unidentifiable	Ironstone	Undecorated	Body	1	1855		
5	49	13	Tableware	Unidentifiable	RWE	Undecorated	Body	1	1830		
5	49	14	Tableware	Unidentifiable	RWE	Green Transfer Print	Rim	1	1830		floral
5	49	15	Tableware	Unidentifiable	RWE	Green Transfer Print	Rim	1	1830		floral; scalloped rim
5	44	19	Tableware	Unidentifiable	RWE	Undecorated	Body	3	1830		
5	44	21	Tableware	Unidentifiable	RWE	Green Transfer Print	Rim	1	1830		floral
5	44	22	Tableware	Holloware	RWE	Black Transfer Print	Base - Body	1	1830		floral
5	35	23	Tableware	Unidentifiable	Semi-Porcelain	Moulded	Body	1			floral; small fragment
5	35	24	Tableware	Unidentifiable	RWE	Blue Transfer Print	Body	1	1830		exfoliated
5	35	25	Tableware	Unidentifiable	RWE	Undecorated	Body	3	1830		
5	54	33	Tableware	Unidentifiable	RWE	Undecorated	Body	1	1830		
5	34	34	Tableware	Unidentifiable	RWE	Blue Transfer Print	Body	1	1886	1936	mark: Keeling & Co., Burselm, England"
5	34	35	Tableware	Unidentifiable	RWE	Moulded	Rim	3	1830		moulded floral design along rim
5	34	36	Tableware	Unidentifiable	Semi-Porcelain	Moulded	Body	1			floral design
5	34	37	Tableware	Unidentifiable	Semi-Porcelain	Gold Transfer Print	Body	2			gold gilding - floral design
5	34	38	Tableware	Unidentifiable	Semi-Porcelain	Undecorated	Body	1			
5	34	39	Tableware	Unidentifiable	RWE	Blue Transfer Print	Rim - Body	3	1830		floral
5	34	46	Tableware	Unidentifiable	RWE	Blue Transfer Print	Body	1	1830		partial mark: "S..."
5	34	47	Tableware	Unidentifiable	RWE	Green Transfer Print	Body	1	1830		partial mark: "..AKE.."
5	34	48	Tableware	Unidentifiable	RWE	Green Transfer Print	Rim	1	1830		floral; scalloped with moulded dots along the edge
5	34	49	Tableware	Unidentifiable	RWE	Blue Transfer Print	Rim	1	1890	1925	(front) floral design with scalloped edge & moulded pattern; (back) mark: "Colonial Potter"; "Stoke, England"
5	34	51	Tableware	Unidentifiable	RWE	Undecorated	Body	37	1830		
5	34	52	Tableware	Teacup Handle	RWE	Undecorated	Fragment	1	1830		
5	43	54	Tableware	Unidentifiable	RWE	Green Transfer Print	Body	1	1897	1907	mark: "Alfred Meakin, England"
5	43	55	Tableware	Unidentifiable	RWE	Blue Transfer Print	Body	4	1830		floral
5	43	59	Tableware	Unidentifiable	RWE	Green Transfer Print	Body	1	1830		partial mark: "ENG.."
5	43	63	Tableware	Handle	RWE	Undecorated	Fragment	1	1830		
5	43	65	Tableware	Unidentifiable	RWE	Undecorated	Body	43	1830		
5	53	69	Tableware	Unidentifiable	Semi-Porcelain	Green Decal Ware	Rim	1			partial floral design?
5	53	73	Tableware	Unidentifiable	RWE	Moulded	Rim	1	1830		moulded design with gold gilding along edge

Site Location 5: Euro-Canadian Ceramic Artifact Catalogue											
Site #	TP #	Cat#	Identification Category	Artifact Description	Ceramic Ware	Ceramic Description & Technique	Portion	N	Begin Date	End Date	Comments
5	53	74	Tableware	Unidentifiable	RWE	Blue Transfer Print	Body	4	1830		floral
5	53	75	Tableware	Unidentifiable	RWE	Undecorated	Body	6	1830		
5	24	77	Tableware	Unidentifiable	RWE	Undecorated	Body	1	1830		
5	24	78	Tableware	Teacup Handle	RWE	Red Transfer Print	Fragment	1	1830		
5	16	82	Tableware	Unidentifiable	Yellowware	Undecorated	Body	1	1842	1910	
5	16	84	Tableware	Unidentifiable	RWE	Green Transfer Print	Rim	1	1830		floral; scalloped rim
5	16	85	Tableware	Unidentifiable	RWE	Blue Transfer Print	Body	1	1830		floral
5	16	86	Tableware	Unidentifiable	Semi-Porcelain	Gold Transfer Print	Rim	2			floral
5	16	87	Tableware	Unidentifiable	Ironstone	Undecorated	Body	1	1855		
5	52	91	Tableware	Unidentifiable	RWE	Blue Transfer Print	Body	2	1830		floral
5	52	93	Tableware	Unidentifiable	RWE	Undecorated	Body	1	1830		
5	52	95	Tableware	Teacup Handle	Semi-Porcelain	Undecorated	Fragment	1			
5	52	97	Tableware	Flatware	RWE	Blue Transfer Print	Body	1	1890	1925	(front) floral; (back) mark: "Colonial Potter"; "Stoke, England"
5	13	98	Tableware	Unidentifiable	RWE	Undecorated	Body	2	1830		
5	13	99	Tableware	Unidentifiable	RWE	Blue Stamped	Body	1	1843	1885	rope/loop design
5	32	106	Tableware	Unidentifiable	RWE	Red, Green Transfer Print	Body	1	1830		small fragment
5	32	108	Tableware	Unidentifiable	RWE	Undecorated	Body	2	1830		
5	40	110	Tableware	Unidentifiable	RWE	Green Transfer Print	Body	1	1830		floral
5	42	112	Tableware	Unidentifiable	RWE	Gold Transfer Print	Body	1	1830		partial gold gilding band
5	42	118	Tableware	Unidentifiable	RWE	Blue Transfer Print	Body	8	1830		floral
5	42	119	Tableware	Unidentifiable	RWE	Undecorated	Body	14	1830		
5	Test Unit#3	126	Tableware	Unidentifiable	RWE	Gold Transfer Print	Rim	2	1830		gold gilding floral design
5	Test Unit#3	130	Tableware	Unidentifiable	RWE	Polychrome Transfer Print	Body	9	1830		red, black & green floral
5	Test Unit#3	133	Tableware	Unidentifiable	RWE	Undecorated	Body	14	1830		
5	Test Unit#2	138	Tableware	Unidentifiable	RWE	Green Transfer Print	Rim - Body	3	1890	1925	(front) floral; (back) markers mark: "Colonial Potter"; "Stoke, England"
5	Test Unit#2	139	Tableware	Unidentifiable	RWE	Moulded	Rim	5	1830		floral design along edge
5	Test Unit#2	140	Tableware	Unidentifiable	Semi-Porcelain	Gold Transfer Print	Rim	1			gold gilding floral design along scalloped edge
5	Test Unit#2	141	Kitchenware	Utilitarian Ware	Red Earthenware-refined	Black Glazed	Body	1			
5	Test Unit#2	146	Tableware	Unidentifiable	RWE	Blue Transfer Print	Base	1	1830		partial mark
5	Test Unit#2	147	Tableware	Hollowware	Semi-Porcelain	Undecorated	Base	1			
5	Test Unit#2	149	Tableware	Unidentifiable	Rockingham (Yellowware)	Brown Mottled Glaze	Body	1	1855	1890	small fragment

Site Location 5: Euro-Canadian Ceramic Artifact Catalogue											
Site #	TP #	Cat#	Identification Category	Artifact Description	Ceramic Ware	Ceramic Description & Technique	Portion	N	Begin Date	End Date	Comments
5	Test Unit#2	150	Tableware	Unidentifiable	Semi-Porcelain	Undecorated	Body	2			
5	Test Unit#2	151	Tableware	Unidentifiable	Porcelain	Undecorated	Body	1			
5	Test Unit#2	152	Tableware	Unidentifiable	Semi-Porcelain	Moulded	Rim	1			moulded design along edge
5	Test Unit#2	153	Tableware	Unidentifiable	RWE	Green Transfer Print	Body	1	1898	1935	(front) floral; (back) mark: Ruskin Pottery
5	Test Unit#2	158	Tableware	Unidentifiable	RWE	Undecorated	Body	28	1830		
5	Test Unit#2	159	Tableware	Unidentifiable	RWE	Green Transfer Print	Rim - Body	23	1830		moulded design along edge; floral
5	Test Unit#1	167	Tableware	Unidentifiable	RWE	Black Transfer Print	Rim - Body	2	1830		floral; exfoliated
5	Test Unit#1	168	Tableware	Unidentifiable	RWE	Undecorated	Rim	1	1830		

TABLE 12: THE EURO-CANADIAN NON-CERAMIC ARTIFACT CATALOGUE FROM LOCATION 5

Site Location 5: Euro-Canadian Non-Ceramic Artifact Catalogue											
Site #	TP #	Cat#	Identification Category	Material	Artifact Description	Portion	N	Begin Date	End Date	Comments	
5	55	1	Household Item	Clear Glass	Bottle Glass	Body	1				
5	25	2	Household Item	Clear Glass	Bottle Glass	Body	1				
5	25	3	Household Item	Coloured Glass	Opaque White Glass Fragment	Body	1				
5	25	7	Misc. Metal	Metal	Scrap Metal Fragments	Fragment	1			small fragment	
5	25	10	Architecture		Mortar	Fragment	1			small fragment	
5	25	11	Architecture	Clear Glass	Window Glass	Incomplete	8			thick	
5	49	16	Architecture	Clear Glass	Window Glass	Incomplete	13			thick	
5	44	20	Household Item	Clear Glass	Bottle Glass	Body	1				
5	35	26	Household Item	Clear Glass	Bottle Glass	Body	1				
5	35	27	Architecture	Metal, Ferrous	Wire Cut Nail	Complete	2	1850		modern nails	
5	26	29	Household Item	Clear Glass	Bottle Glass	Body	1			moulded - ribbed	
5	26	30	Household Item	Clear Glass	Bottle Glass	Body	4			moulded - stippling	
5	26	31	Household Item	Clear Glass	Bottle Glass	Body	9				
5	54	32	Household Item	Clear Glass	Bottle Glass	Body	2				
5	34	40	Household Item	Coloured Glass	Purple Bottle Glass	Body	2				
5	34	41	Household Item	Coloured Glass	Amber Bottle Glass	Body	1				
5	34	42	Architecture	Clear Glass	Window Glass	Incomplete	5			thick	
5	34	43	Household Item	Clear Glass	Bottle Glass	Body	2				
5	34	44	Architecture	Metal, Ferrous	Wire Cut Nail	Complete	1	1850			

Site Location 5: Euro-Canadian Non-Ceramic Artifact Catalogue										
Site #	TP #	Cat#	Identification Category	Material	Artifact Description	Portion	N	Begin Date	End Date	Comments
5	34	45	Architecture	Metal, Iron	Machine Cut Nail	Complete	1	1830		
5	34	50	Household Item	Coloured Glass	Aqua Bottle Glass	Base - Body	5			
5	43	53	Household Item	Coloured Glass	Aqua Furniture Coaster	Complete	1			embossed lettering: "Pat'd April.25.82"
5	43	56	Architecture	Metal, Ferrous	Wire Cut Nail	Incomplete	3	1850		
5	43	57	Tableware	Clear Glass	Decorative Glass	Body	2			pressed - triangle-shaped design
5	43	58	Architecture	Metal, Iron	Machine Cut Nail	Incomplete	1	1830		
5	43	60	Architecture		Mortar	Fragment	2			small fragments
5	43	61	Household Item	Clear Glass	Bottle Glass	Body	7			
5	43	62	Architecture	Clear Glass	Window Glass	Incomplete	3			thick
5	43	64	Household Item	Coloured Glass	Amber Bottle Glass	Body	7			
5	4	66	Architecture	Clear Glass	Window Glass	Incomplete	67			thick
5	4	67	Architecture	Metal, Ferrous	Wire Cut Nail	Incomplete	3	1850		
5	4	68	Misc. Metal	Metal	Scrap Metal Fragments	Fragment	1			small fragment
5	53	70	Architecture	Metal, Ferrous	Wire Cut Nail	Incomplete	3	1850		
5	53	71	Architecture	Metal, Iron	Machine Cut Nail	Incomplete	1	1830		
5	53	72	Architecture	Metal, Ferrous	Wire	Fragment	3			
5	53	76	Architecture	Clear Glass	Window Glass	Incomplete	21			thick
5	24	79	Household Item	Clear Glass	Bottle Glass	Body	4			
5	24	80	Household Item	Clear Glass	Bottle Glass	Base	2	1917	1962	Consumer Glass Company; "Made In Canada"; "C" upside down triangle
5	22	81	Household Item	Clear Glass	Bottle Glass	Body	1			
5	16	83	Household Item	Clear Glass	Bottle Glass	Body	2			
5	33	88	Architecture	Metal, Ferrous	Wire Cut Nail	Incomplete	1	1850		
5	17	89	Household Item	Clear Glass	Bottle Glass	Body	1			
5	52	90	Other		Battery Carbon Rod	Complete	1			
5	52	92	Unidentified	Plastic	Misc. Plastic Fragment	Fragment	1			white
5	52	94	Architecture	Metal, Iron	Machine Cut Nail	Incomplete	1	1830		
5	52	96	Architecture	Metal, Ferrous	Wire Cut Nail	Incomplete	5	1850		
5	13	100	Architecture	Clear Glass	Window Glass	Incomplete	2			thick
5	13	101	Architecture	Metal, Iron	Machine Cut Nail	Incomplete	1	1830		
5	13	102	Architecture	Metal, Ferrous	Wire Cut Nail	Incomplete	3	1850		
5	15	104	Architecture	Clear Glass	Window Glass	Incomplete	2			thick
5	32	105	Architecture	Clear Glass	Window Glass	Incomplete	1			thick
5	32	107	Architecture	Metal, Ferrous	Wire Cut Nail	Incomplete	4	1850		
5	31	109	Household Item	Coloured Glass	Olive Green Bottle Glass	Body	1			
5	40	111	Architecture	Clear Glass	Window Glass	Incomplete	2			thick
5	42	113	Architecture	Clear Glass	Window Glass	Incomplete	1			thick

Site Location 5: Euro-Canadian Non-Ceramic Artifact Catalogue										
Site #	TP #	Cat#	Identification Category	Material	Artifact Description	Portion	N	Begin Date	End Date	Comments
5	42	114	Household Item	Clear Glass	Bottle Glass	Body	1			
5	42	115	Architecture	Clear Glass	Light Bulb	Fragment	1			glass fragments
5	42	116	Household Item	Coloured Glass	Purple Bottle Glass - Jar	Body	1			external threading along edge
5	42	117	Household Item	Coloured Glass	Olive Green Bottle Glass	Body	1			
5	42	120	Misc. Metal	Metal	Scrap Metal Fragments	Fragment	2			
5	42	121	Architecture	Metal, Ferrous	Wire Cut Nail	Incomplete	10	1850		
5	42	122	Hardware	Metal	Wrench Fragment	Incomplete	1			corroded
5	Test Unit#3	123	Household Item	Coloured Glass	Olive Green Bottle - Finish	Fragment	1	1905		Crown Finish Fragment
5	Test Unit#3	124	Horse Hardware	Metal, Iron	Horse Shoe Nail	Complete	1			
5	Test Unit#3	125	Household Item	Coloured Glass	Amber Bottle Glass	Body	3			
5	Test Unit#3	127	Household Item	Coloured Glass	Olive Green Bottle Glass	Body	1			
5	Test Unit#3	128	Architecture	Clear Glass	Window Glass	Incomplete	10			thick
5	Test Unit#3	129	Household Item	Clear Glass	Bottle Glass	Body	6			
5	Test Unit#3	131	Misc. Metal	Metal	Scrap Metal Fragments	Fragment	2			
5	Test Unit#3	132	Architecture	Metal, Ferrous	Fence - Barbed Wire	Fragment	3			
5	Test Unit#3	134	Architecture	Metal, Ferrous	Wire Cut Nail	Incomplete	2	1850		
5	Test Unit#3	135	Architecture	Metal, Ferrous	Wire	Fragment	10			
5	Test Unit#2	142	Household Item	Clear Glass	Bottle Glass - Rim	Fragment	1			external threading along rim; small fragment
5	Test Unit#2	143	Household Item	Clear Glass	Bottle Glass	Body	8			
5	Test Unit#2	144	Household Item	Clear Glass	Bottle Glass	Body	1			embossed lettering: "M."; "RD.."
5	Test Unit#2	145	Household Item	Coloured Glass	Purple Bottle Glass	Body	2			
5	Test Unit#2	148	Architecture	Clear Glass	Window Glass	Incomplete	11			thick
5	Test Unit#2	154	Architecture	Metal, Iron	Machine Cut Nail	Incomplete	1	1830		
5	Test Unit#2	155	Architecture	Metal, Ferrous	Wire Cut Nail	Incomplete	4	1850		
5	Test Unit#2	156	Misc. Metal	Metal	Scrap Metal Fragments	Fragment	4			
5	Test Unit#2	157	Household Item	Metal	Bottle Cap	Incomplete	1	1868		J.R. Watkins Naturals; modern

Site Location 5: Euro-Canadian Non-Ceramic Artifact Catalogue										
Site #	TP #	Cat#	Identification Category	Material	Artifact Description	Portion	N	Begin Date	End Date	Comments
5	Test Unit#2	160	Architecture	Metal, Ferrous	Wire	Fragment	1			
5	Test Unit#1	161	Architecture	Clear Glass	Window Glass	Incomplete	36			thick
5	Test Unit#1	162	Architecture	Metal, Iron	Machine Cut Nail	Incomplete	9	1830		
5	Test Unit#1	163	Architecture	Metal, Ferrous	Wire Cut Nail	Incomplete	18	1850		
5	Test Unit#1	164	Architecture		Mortar	Fragment	9			
5	Test Unit#1	165	Misc. Metal	Metal	Misc. Metal Fragment	Fragment	3			
5	Test Unit#1	166	Other		Battery Carbon Rod	Incomplete	1			
5	Test Unit#1	169	Personal	Plastic	Black Plastic Button	Complete	1			pressed square design; modern

TABLE 13: THE FAUNAL ARTIFACT CATALOGUE FROM LOCATION 5

Site Location 5: Faunal Artifact Catalogue											
Site #	TP #	Cat#	N	Class	Order	Family	Species	Element	Portion	Age	Comments
5	49	17	5	Mammalia	Unknown	-	-	Unidentifiable	Fragments	Unknown	
5	49	18	1	Mammalia	Unknown	-	-	Unidentifiable	Fragment	Unknown	burnt; saw marks
5	35	28	1	Mammalia	Unknown	-	-	Unidentifiable	Fragment	Unknown	calcined
5	13	103	1	Mammalia	Unknown	-	-	Mandible	Mandible Fragment	Unknown	small mammal
5	Test Unit#3	136	7	Mammalia	Unknown	-	-	Unidentifiable	Fragments	Unknown	calcined
5	Test Unit#3	137	3	Mammalia	Unknown	-	-	Unidentifiable	Fragments	Unknown	small fragments
5	Test Unit#1	170	1	Mammalia	Unknown	-	-	Unidentifiable	Fragment	Unknown	

TABLE 14: THE LOCATION OF CATALOGUED ARTIFACTS FROM THE LOCATION 4 SITE (BBHE-3)

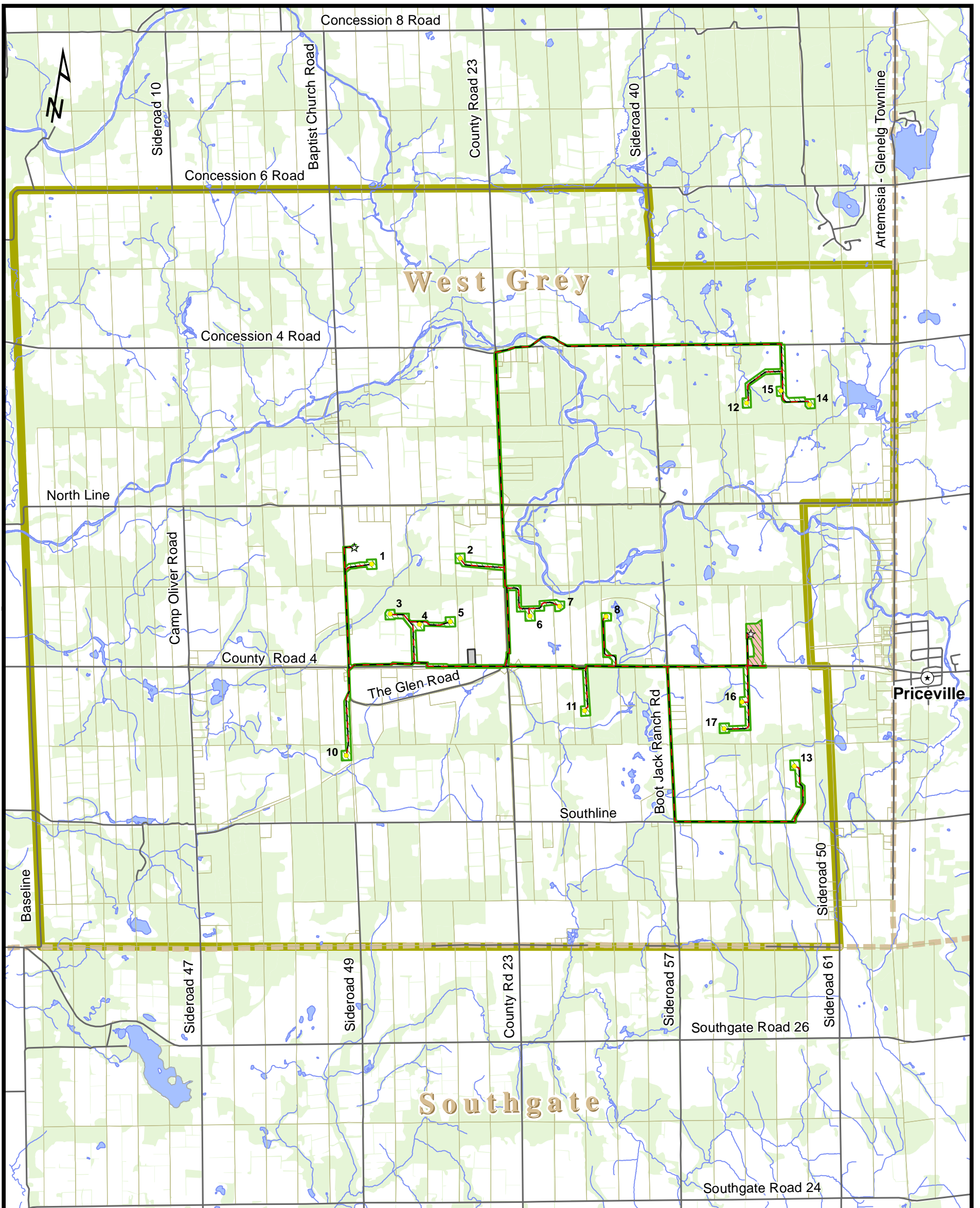
Catalogue Number	Box number
1-25	1

TABLE 15: THE LOCATION OF CATALOGUED ARTIFACTS FROM THE LOCATION 5 SITE

Catalogue Number	Box number
1-170	1

Appendix C

Project Location Maps Originally
Approved



Legend

- Proposed Wind Turbine (Sept 12, 2012)
- ⊕ Town / Village
- ☆ Proposed Met Tower
- Collection Line
- Roadway
- Proposed Substation
- Laydown Area
- Parcel
- ⊞ Municipal Boundary
- ▭ Project Boundary
- ▨ Construction Disturbance Area
- Wooded Area



Scale: 0 500 1,000 2,000 3,000 m
1:50,000

Project: **EAST DURHAM WIND ENERGY CENTRE**

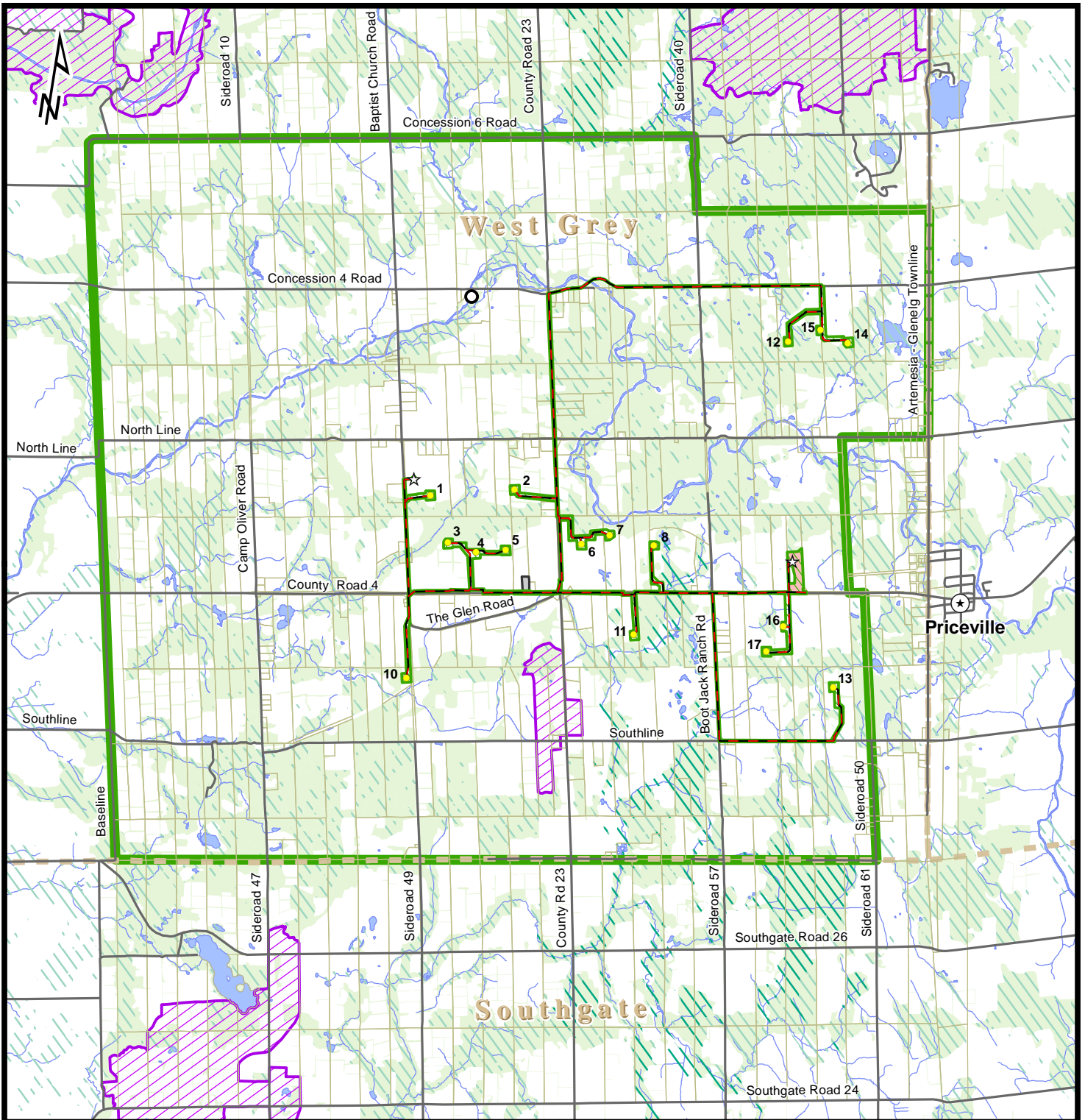
Title: **East Durham Project Location**

Project No.: **MA-111-15446-MA**

Date: **January 2013**

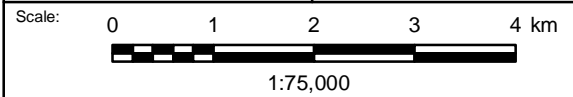
Revision No.: **1**

Figure No.: **3**



Legend

- Proposed Wind Turbine
- ☆ Proposed Met Tower
- Abandoned and Dry Oil or Gas Well
- ⊙ Town / Village
- Collection Line
- Roadway
- Proposed Substation
- Laydown Area
- ▨ Construction Disturbance Area
- ▭ Project Boundary (> 300 m from Project Location)
- ▭ Parcel
- ▭ Municipal Boundary
- ⊕ ANSI
- ▨ Wetland
- ▨ Provincially Significant Wetland
- ▨ Wooded Area



Project Name: **EAST DURHAM WIND ENERGY CENTRE**

Title: **Project Location and Study Area Features**

Project No.: MA-111-15446-MA Date: January 24, 2013