

**LEGEND**

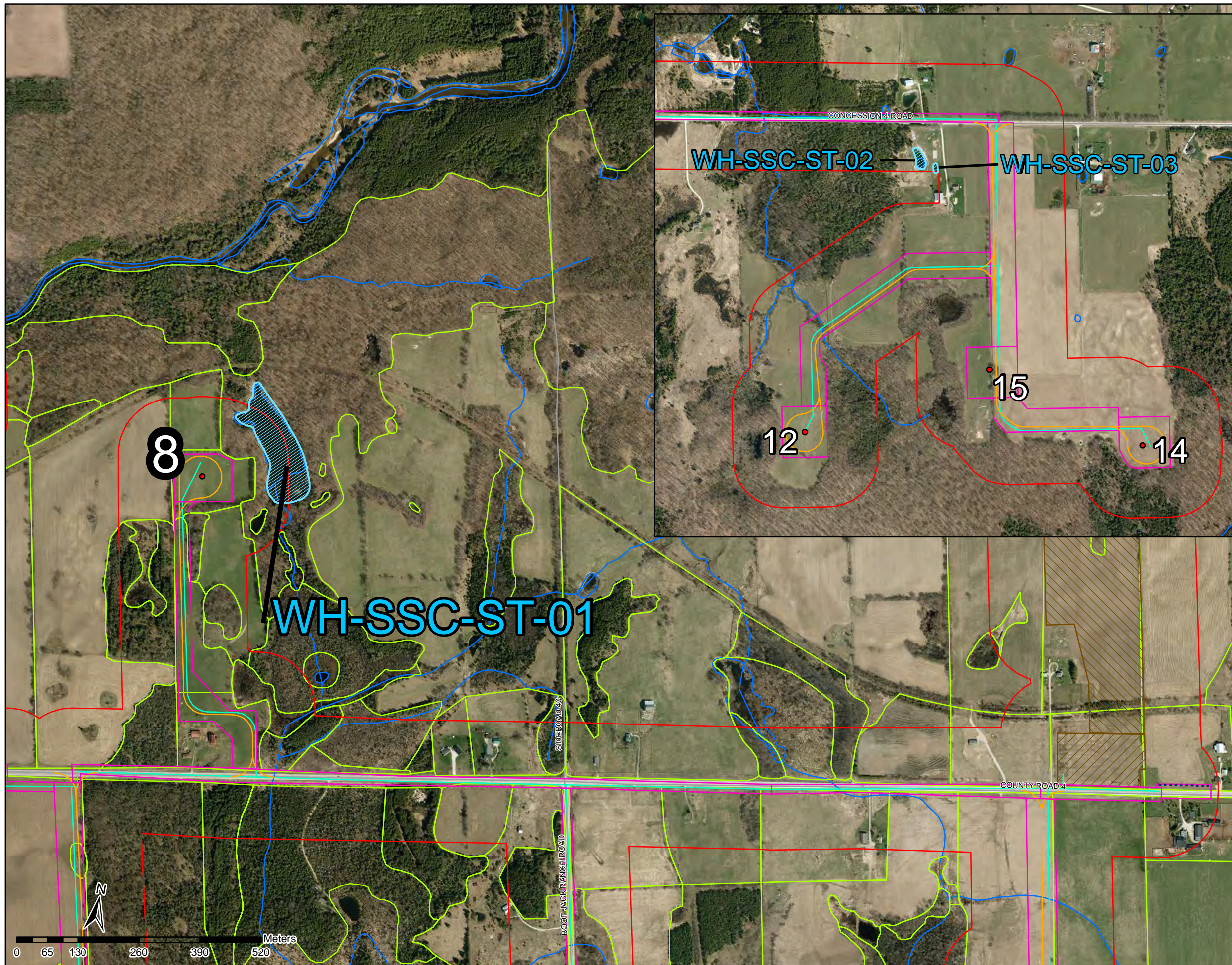
- SWH: Marsh Bird Breeding Habitat
- Site Plan (2012-09-12)**
- Turbine
- MET Tower
- Access Road
- Construction Disturbance
- Collection
- Overhead Transmission
- MET Tower 200ft Disturbance Area
- Substation
- Laydown Area
- 120m Buffer from Project Components
- Study Area (Dec 2011)
- Watercourse (LIO, 2012-06-19)
- Waterbody (LIO, 2012-06-19)

**SWH:  
Marsh Bird  
Breeding Habitat**



Project	TA8119	Figure	29
Date	Oct, 2012	Prepared By:	KC
Scale	1:15,000	Verified By:	LKR





**LEGEND**

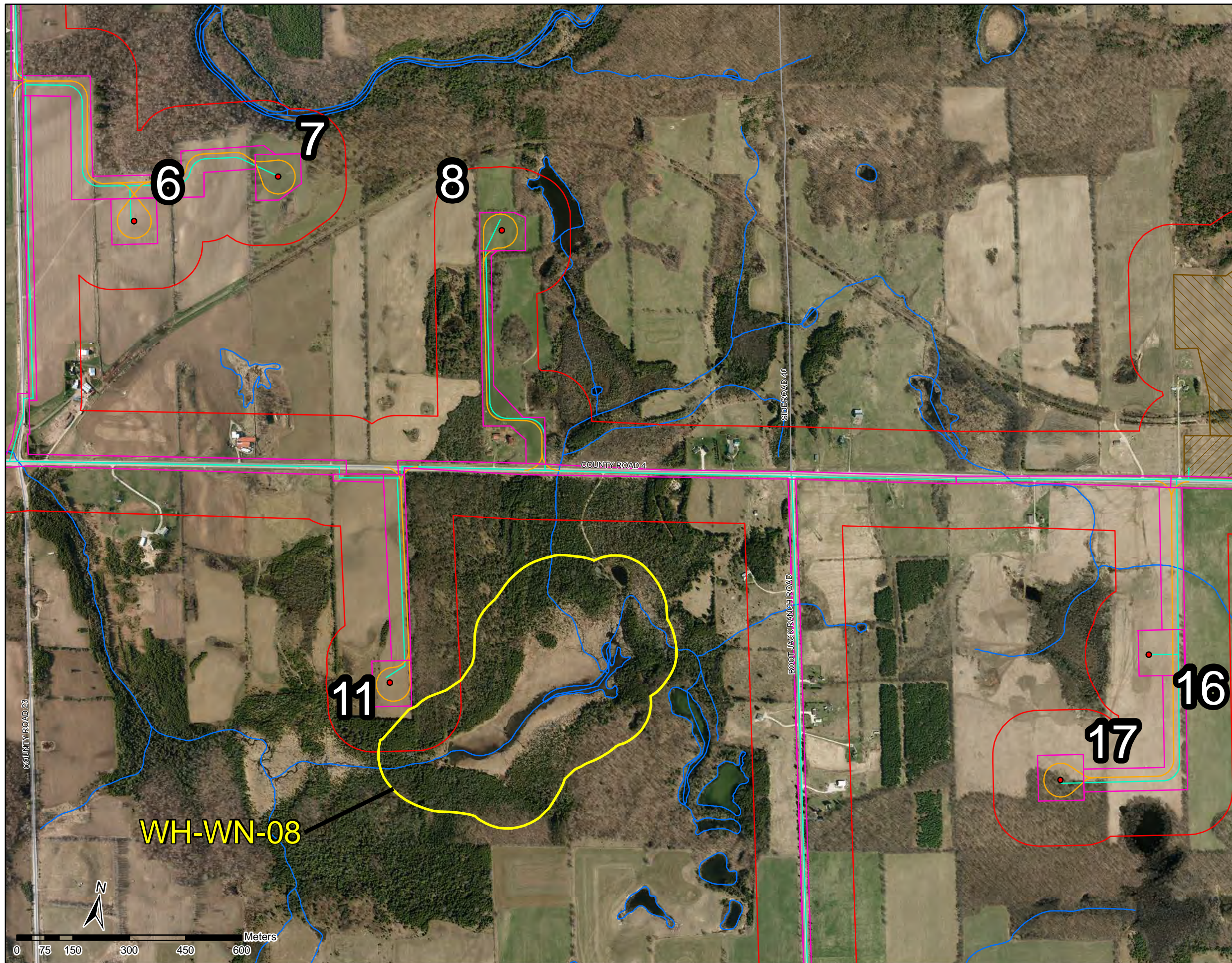
- SWH: Snapping Turtle
- Site Plan (2012-09-12)**
- Turbine
- MET Tower
- Access Road
- Construction Disturbance
- Collection
- Overhead Transmission
- MET Tower 200ft Disturbance Area
- Substation
- Laydown Area
- 120m Buffer from Project Components
- Study Area (Dec 2011)
- Watercourse (LIO, 2012-06-19)
- Waterbody (LIO, 2012-06-19)

**SWH:  
Species of Special  
Concern**



<b>Project</b>	TA8119	<b>Figure</b>	30
<b>Date</b>	Oct, 2012	<b>Prepared By:</b>	VLK
<b>Scale</b>	1:8,000	<b>Verified By:</b>	LKR





**LEGEND**

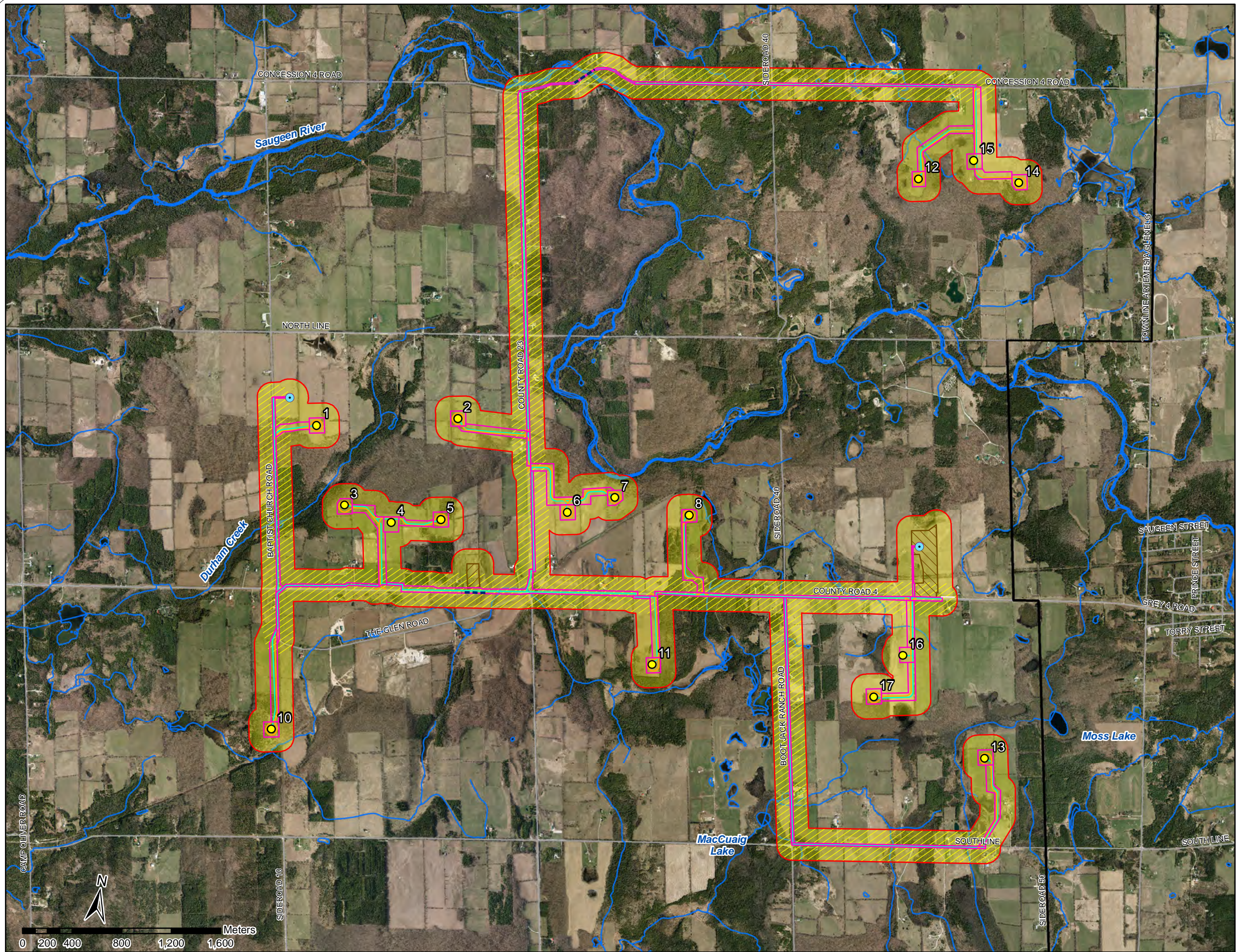
- SWH: Waterfowl Nesting Areas
- Site Plan (2012-09-12)**
- Turbine
- MET Tower
- Access Road
- Construction Disturbance
- Collection
- Overhead Transmission
- MET Tower 200ft Disturbance Area
- Substation
- Laydown Area
- 120m Buffer from Project Components
- Study Area (Dec 2011)
- Watercourse (LIO, 2012-06-19)
- Waterbody (LIO, 2012-06-19)

**SWH: Waterfowl Nesting Areas**



<b>Project</b>	TA8119	<b>Figure</b>	31
<b>Date</b>	Oct, 2012	<b>Prepared By:</b>	VLK
<b>Scale</b>	1:10,000	<b>Verified By:</b>	LKR





**LEGEND**

**Site Plan (2012-11-21)**

- Turbine
- MET Tower
- Access Road
- Construction Disturbance
- Underground Collection
- - - Overhead Transmission
- MET Tower 200ft Disturbance Area
- Substation
- Laydown Area
- 120m Buffer from Project Components
- Study Area (Dec 2011)
- Watercourse (LIO, 2012-06-19)
- Waterbody (LIO, 2012-06-19)
- Generalized SWH for the following:

- Waterfowl Stopover and Staging (Aquatic);
- Colonial-Nesting Bird Breeding Habitat (ground);
- Colonial Nesting Bird Breeding Habitat (tree/shrub);
- Amphibian Breeding Habitat (wetlands);
- Amphibian Breeding Habitat (woodlands);
- Shrub/Early Successional Bird Breeding Habitat / Declining Guild Shrubland Birds;
- Deer Movement Corridors;
- Bald Eagle and Osprey Nesting, Foraging and Perching Habitat;
- Turtle Nesting Areas;
- Bat Maternity Colonies;
- Turtle Wintering Areas;
- Waterfowl Nesting Areas;
- Marsh Breeding Bird Habitat; and,
- Special Concern and Rare Wildlife.

- +  Generalized SWH for the following:
- Terrestrial Crayfish; and,
- Seeps and Springs.

**SWH: Generalized**



<b>Project</b>	TA8119	<b>Figure</b>	32
<b>Date</b>	Nov, 2012	<b>Prepared By:</b>	KC
<b>Scale</b>	1:30,000	<b>Verified By:</b>	LKR