

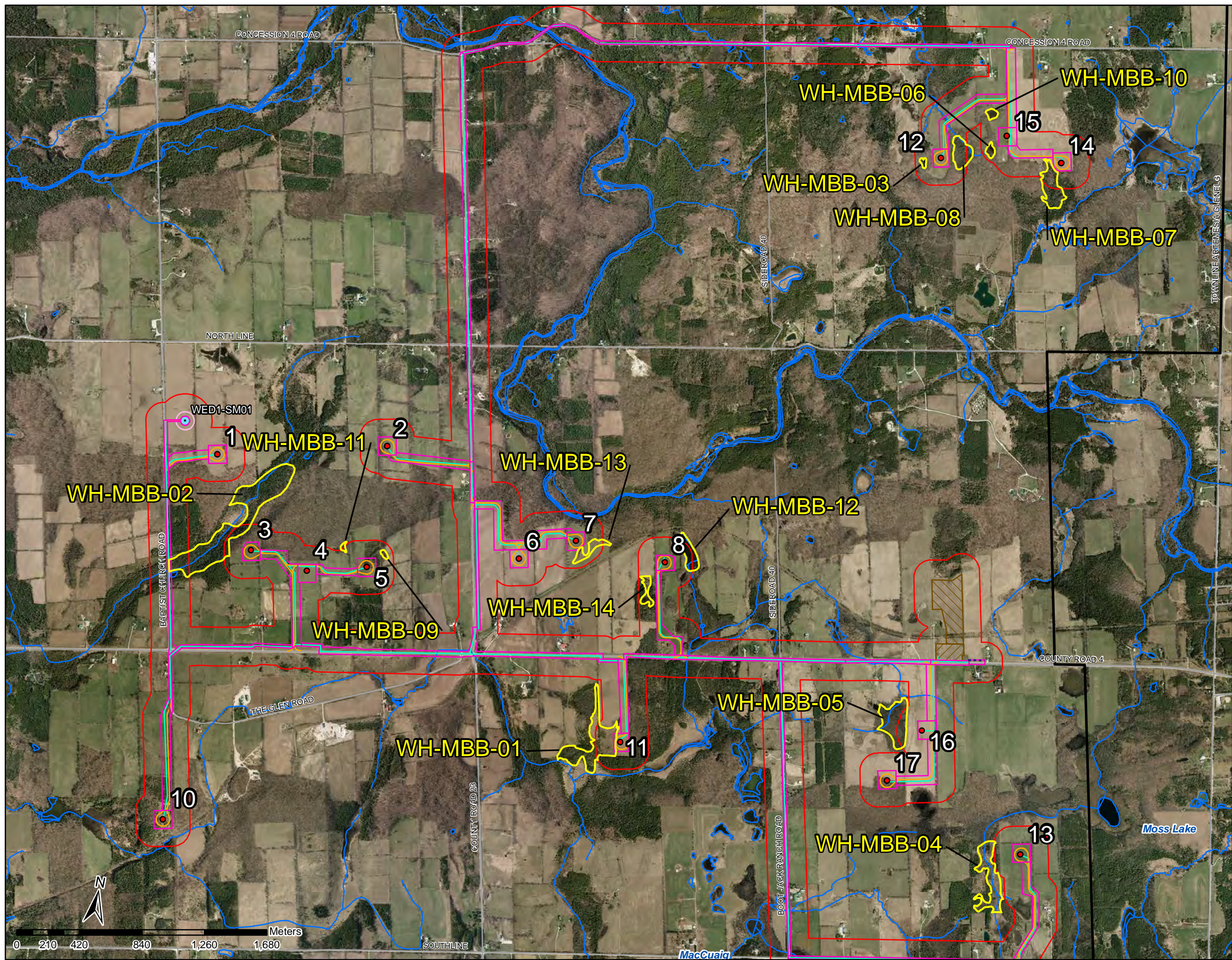
**LEGEND**

- Candidate SWH: Amphibian Breeding Habitat (Woodland)
- Site Plan (2012-09-12)**
- Turbine
- MET Tower
- Access Road
- Construction Disturbance
- Collection
- - - Overhead Transmission
- MET Tower 200ft Disturbance Area
- Substation
- Laydown Area
- 120m Buffer from Project Components
- Study Area (Dec 2011)
- Watercourse (LIO, 2012-06-19)
- Waterbody (LIO, 2012-06-19)

**Candidate SWH:  
Amphibian Breeding  
Habitat (Woodland)**



Project	TA8119	Figure	21
Date	October, 2012	Prepared By:	KC
Scale	1:30,000	Verified By:	LKR



### LEGEND

- Candidate SWH: Marsh Bird Breeding Habitat
- Site Plan (2012-09-12)**
- Turbine
- MET Tower
- Access Road
- Construction Disturbance
- Collection
- - - Overhead Transmission
- MET Tower 200ft Disturbance Area
- Substation
- Laydown Area
- 120m Buffer from Project Components
- Study Area (Dec 2011)
- Watercourse (LIO, 2012-06-19)
- Waterbody (LIO, 2012-06-19)

**Candidate SWH:  
Marsh Bird  
Breeding Habitat**



Project	TA8119	Figure	22
Date	Oct, 2012	Prepared By:	KC
Scale	1:25,000	Verified By:	LKR

**Significant Wetlands**

**Significant (MNR PSW):**

WE-12: Beaver Meadow PSW  
(identified by MNR + refined by LGL)

WE-13: Topcliff Swamp PSW

**Significant (Evaluated by LGL based on OWES):**

WE-06

**Treated as Significant:**

WE-01

WE-02

WE-03

WE-04

WE-05

WE-07

WE-08

WE-09

**LEGEND**

**Site Plan (2012-09-12)**

- Turbine
- MET Tower
- Access Road
- Construction Disturbance
- Collection
- Overhead Transmission
- MET Tower 200ft Disturbance Area
- ▨ Substation
- ▨ Laydown Area
- 120m Buffer from Project Components
- Study Area (Dec 2011)
- Watercourse (LIO, 2012-06-19)
- Waterbody (LIO, 2012-06-19)

**Significant Wetland Complexes**



Project	TA8119	Figure	23
Date	October, 2012	Prepared By:	KC
Scale	1:30,000	Verified By:	LKR

