

Appendix B

Photographic Record

Appendix B-1

Bonnie Doon Creek



Photo 1 Station 27-4 – Bonnie Doon Creek (Fall 2011) - Facing upstream (south) from proposed crossing showing channel and surrounding vegetation.



Photo 2 Station 27-4 – Bonnie Doon Creek (Fall 2011) - Facing downstream (north) from proposed crossing showing channel and surrounding vegetation.



Photo 3 Station 27-3 – Bonnie Doon Creek (Fall 2011) - Facing upstream (south) from Egremont Road showing roadside drainage, golf course and channel overview.



Photo 4 Station 27-3 – Bonnie Doon Creek (Fall 2011) - Facing downstream (north) from Egremont Road showing culvert, roadside drainage and channel overview.



Photo 5 Station 27-1 – Jardine Drain (Spring 2012) – Facing upstream (south) from Oil Heritage Road showing channel overview.



Photo 6 Station 27-1 – Jardine Drain (Spring 2012) - Facing downstream (north) showing channel and vegetation.



Photo 7 Station 27-5 – Bonnie Doon Creek-1 (Fall 2011) - Facing north showing wet area with no evidence of a defined channel.



Photo 8 Station 25-2 – Greendees Drain (Spring 2012) – Facing upstream (east) along Aberarder Line showing channel overview.



Photo 9 Station 25-2 – Greendees Drain (Spring 2012) – Facing downstream (west) showing cattail lined channel.



Photo 10: Station 25-5 – Greendees Drain (Summer 2012) – Facing east along Aberarder Line.



Photo 11: Station 25-5 – Greendees Drain (Summer 2012) – Facing west along Aberarder Line.

Appendix B-2

30 Creek Drain



Photo 1 Station 23-1 – 30 Creek Drain (Fall 2011) - Facing upstream (southeast) showing channel overview with abundant woody debris and leaf litter.



Photo 2 Station 23-1 – 30 Creek Drain (Fall 2011) - Facing downstream (northwest) showing channel overview with abundant woody debris and leaf litter.



Photo 3 Station 23-1 – 30 Creek Drain (Spring 2012) – Facing upstream (southeast) showing recently cleared channel.



Photo 4 Station 23-1 – 30 Creek Drain (Spring 2012) – Facing downstream (northwest) showing recently cleared channel.

Filepath:

Photo 5:

Photo 6:



Client/Project
Suncor Energy
Cedar Point Wind Power Project

January 2013
160960709

Appendix
B

Page
1 of 1

Title
30 Creek Drain Photographic Record

Appendix B-3

Aberarder Creek



Photo 1 Station 33-1 – Aberarder Creek (Spring 2012) – Facing upstream (southeast) showing channel overview.



Photo 2 Station 33-1 – Aberarder Creek (Spring 2012) – Facing downstream (northwest) showing channel and surrounding vegetation.



Photo 3 Station 32-1 – Aberarder Creek (Spring 2012) – Facing upstream (east) showing channel and surrounding vegetation.



Photo 4 Station 32-1 – Aberarder Creek (Spring 2012) – Facing downstream (west) showing channel and vegetation.



Photo 5 Station 22-1 – Aberarder Creek (Spring 2012) - Facing upstream (east) from Oil Heritage Road showing channel overview.



Photo 6 Station 22-1 – Aberarder Creek (Spring 2012) - Facing downstream (southwest) showing tile drainage inputs and channel overview.

Filepath:





Photo 7: Station 22-5 – Aberarder Creek (Fall 2012) – Facing upstream from station showing channel overview.



Photo 8: Station 22-5 – Aberarder Creek (Fall 2012) – Facing downstream from station showing channel overview.



Photo 9 Station 34-1 – Watson Drain (Fall 2011) - Facing upstream (east) from Hillsboro Road showing culvert and channel overview.



Photo 10 Station 34-1 – Watson Drain (Fall 2011) - Facing downstream (west) from Hillsboro Road showing culvert and channel overview.



Photo 11 Station 26-1 – Watson Drain (Spring 2012) – Facing upstream (west) showing channel and surrounding vegetation.



Photo 12 Station 26-1 – Watson Drain (Spring 2012) – Facing downstream (north) showing channel overview.

Filepath:



Photo 13 Station 34-2 – Bannister Drain (Fall 2011) - Facing upstream (south) along the east side of Hillsboro Road showing culvert and channel overview.



Photo 14 Station 34-2 – Bannister Drain (Fall 2011) - Facing downstream (northwest) from Hillsboro Road showing culvert and channel overview.



Photo 15 Station 24-1 – Bannister Drain (Spring 2012) – Facing upstream (southeast) showing channel and vegetation.



Photo 16 Station 24-1 – Bannister Drain (Spring 2012) – Facing downstream (northwest) showing channel overview.



Photo 17 Station 22-6– Bannister Drain (Fall 2012) – Facing upstream from station showing channel overview.



Photo 18 Station 22-6– Bannister Drain (Fall 2012) – Facing downstream from station showing channel and riparian vegetation.

Filepath:



Photo 19 Station 62-2– Bannister Drain (Fall 2012) – Facing upstream (south) along incised channel.



Photo 20 Station 62-2– Bannister Drain (Fall 2012) – Facing downstream (north) showing channel overview.



Photo 21 Station 62-3– Bannister Drain-1 (Fall 2012) – Facing upstream (south) showing dry channel through hedgerow.



Photo 22 Station 45-1 – Galbraith Drain (Spring 2012) – Facing south showing tilled field.



Photo 23 Station 45-2 – Byrnes-Sutton Drain (Spring 2012) – Facing upstream (east) showing channel overview.



Photo 24 Station 45-2 – Byrnes-Sutton Drain (Spring 2012) – Facing downstream (west) showing large pool and channel.

Filepath:



Photo 25 Station 45-3 – Byrnes-Sutton Drain-1 (Summer 2012) – Facing upstream (south) towards Station 45-1 showing channel and surrounding fields.



Photo 26 Station 45-3 – Byrnes-Sutton Drain-1 (Summer 2012) – Facing downstream (north) showing channel overview.



Photo 27 Station 46-2 – 10th Concession Drain (Summer 2012) – Facing upstream (west) along Aberarder Line.



Photo 28 Station 33-2 – 10th Concession Drain (Summer 2012) – Facing downstream (east) towards Aberarder Creek.



Photo 29 Station 32-3 – Aberarder Creek-1 (Fall 2011) - Facing upstream (southwest) from Hillsboro Road looking toward Aberarder Line showing channel overview.



Photo 30 Station 32-3 – Aberarder Creek-1 (Fall 2011) - Facing downstream (northeast) from Hillsboro Road showing channel overview.

Filepath:



Photo 31 Station 22-3 – Unknown Drain (Fall 2011) - Facing upstream (east) from proposed crossing showing agricultural field.



Photo 32 Station 22-3 – Unknown Drain (Fall 2011) - Facing downstream (west) showing channel overview.



Photo 33 Station 22-2 – Unknown Drain (Fall 2011) - Facing upstream (south) from Douglas Line showing channel overview.



Photo 34 Station 22-2 – Unknown Drain (Fall 2011) - Close-up of upstream culvert showing large pool and roadside drainage inputs.



Photo 35 Station 62-1 – Unknown Drain 2 (Fall 2012) – Facing north from Wright Line, west of Blue Heron Road showing no surface feature.



Photo 36 Station 62-1 – Unknown Drain 2 (Fall 2012) – Facing southeast from Wright Line showing surficial drainage.

Filepath:

Appendix B-4

Highland Creek



Photo 1 Station 31-3 – Highland Creek (Fall 2011) - Facing upstream (south) from Douglas Line showing channel overview.



Photo 2 Station 31-3 – Highland Creek (Fall 2011) - Facing downstream (north) from Douglas Line showing braided flow through grass lined channel.



Photo 3 Station 21-1 – Highland Creek (Spring 2012) – Facing upstream (east) showing channel overview.



Photo 4 Station 21-1 – Highland Creek (Spring 2012) – Facing downstream (west) showing channel and surrounding vegetation.



Photo 5 Station 64-2 – Highland Creek (Spring 2012) – Facing upstream showing channel overview.



Photo 6 Station 64-2 – Highland Creek (Spring 2012) – Facing downstream showing surrounding riparian vegetation.

Filepath:



Photo 7 Station 31-2 – James-Wilkinson Drain (Spring 2012) – Facing upstream (south) showing channel and surrounding vegetation.



Photo 8 Station 31-2 – James-Wilkinson Drain (Spring 2012) – Facing downstream (north) showing channel and riparian vegetation.



Photo 9 Station 46-1 – James Wilkinson Drain (Summer 2012) – Facing north showing tiled drainage and cropped field.



Photo 10 Station 55-3 – James Wilkinson Drain (Fall 2012) – Showing start of channelized feature with tile drainage inputs.



Photo 11 Station 55-3 – James Wilkinson Drain (Fall 2012) – Facing downstream (west) showing channel overview.



Photo 12 Station 55-2 – James Wilkinson Drain (Fall 2012) – Facing east showing lack of surface feature.

Filepath:



Photo 13 Station 32-2 – Hartley Drain (Spring 2012) - Facing upstream (south) showing channel and surrounding vegetation.



Photo 14 Station 32-2 – Hartley Drain (Spring 2012) - Facing downstream (north) showing channel overview.



Photo 15 Station 31-1 – Hartley Drain (Fall 2011) - Facing upstream (south) along the east side of Hillsboro Road showing channel densely lined with cattails.



Photo 16 Station 31-1 – Hartley Drain (Fall 2011) - Facing downstream (north) along the west side of Hillsboro Road showing culvert and channel densely lined with cattails.



Photo 17 Station 31-4 – Cates Drain (Fall 2011) - Facing downstream (southwest) showing dry culvert for conveying roadside and surficial drainage.



Photo 18 Station 31-4 – Cates Drain (Fall 2011) - Close-up of downstream culvert.

Filepath:





Photo 19 Station 60-1 – Kernohan-O'Donnell Drain (Fall 2012) – Facing upstream showing channel overview.



Photo 20 Station 60-1 – Kernohan-O'Donnell Drain (Fall 2012) – Facing downstream showing channel overview and surrounding agricultural fields.



Photo 21 Station 55-1 – Kernohan-O'Donnell Drain (Fall 2012) – Facing upstream showing channel overview.



Photo 22 Station 55-1 – Kernohan-O'Donnell Drain (Fall 2012) – Facing downstream from culvert showing pool and channel overview.



Photo 23 Station 64-3 – Kernohan-O'Donnell Drain (Fall 2012) – Facing upstream from station showing channel and surrounding vegetation.



Photo 24 Station 64-3 – Kernohan-O'Donnell Drain (Fall 2012) – Facing downstream from station showing channel overview.

Filepath:

Appendix B-5

Douglas Drain



Photo 1 Station 18-5 – Douglas Drain (Summer 2012) – Facing upstream (east) showing incised channel between wooded area and agricultural field.



Photo 2 Station 18-5 – Douglas Drain (Summer 2012) – Facing downstream (west) showing channel overview.



Photo 3 Station 18-1 – Douglas Drain (Fall 2011) - Facing upstream (southeast) from Hillsboro Road showing culvert and channel overview.



Photo 4 Station 18-1 – Douglas Drain (Fall 2011) - Facing downstream (west) from Hillsboro Road showing culvert and channel overview. Note the concrete deflection wall in the background.



Photo 5 Station 56-1 – Douglas Drain (Summer 2012) – Facing north showing tiled drainage and cropped field.



Photo 6 Station 18-2 – Hubbard Drain (Fall 2011) – Facing east near the intersection of Hillsboro and Hubbard Line showing a dry grassy swale.

Filepath:



Photo 7 Station 18-2 – Hubbard Drain (Fall 2011) – Facing west near the intersection of Hillsboro and Hubbard Line showing a dry grassy swale.



Photo 8 Station 18-3 – Douglas Drain-1 (Fall 2011) - Facing upstream (east) along Hubbard Line showing cattail lined channel.



Photo 9 Station 18-3 – Douglas Drain-1 (Fall 2011) - Facing downstream (west) along Hubbard Line showing a channel overview.



Photo 10 Station 18-3 – Douglas Drain-1 (Spring 2012) – Facing upstream (east) showing channel lined with cattails.



Photo 11 Station 18-3 – Douglas Drain-1 (Spring 2012) – Facing downstream (west) showing channel overview.



Photo 12 Station 18-4 – Lilhgow Drain (Summer 2012) – Photo of wooded area with no evidence of a channel.

Filepath:

Appendix B-6

Hickory Creek



Photo 1 Station 20-1 – Hickory Creek (Spring 2012) – Facing upstream (east) showing channel and surrounding vegetation.



Photo 2 Station 20-1 – Hickory Creek (Spring 2012) – Facing downstream (west) showing channel overview.



Photo 3 Station 19-2 – Hickory Creek (Fall 2011) - Facing upstream (east) from farm crossing just north of Hubbard Line showing channel overview.



Photo 4 Station 19-2 – Hickory Creek (Fall 2011) - Facing downstream (west) from farm crossing just north of Hubbard Line showing channel overview.



Photo 5 Station 17-1 – Hickory Creek (Spring 2012) – Facing upstream (east) showing channel and substrate.



Photo 6 Station 17-1 – Hickory Creek (Spring 2012) – Facing downstream (west) showing channel and substrate.

Filepath:



Photo 7 Station 17-5– Hickory Creek (Summer 2012) – Facing upstream (east) from proposed crossing showing channel overview.



Photo 8 Station 17-5 – Hickory Creek (Summer 2012) – Facing downstream (west) from proposed crossing showing channel and surrounding vegetation.



Photo 9 Station 52-2– Todd Drain (Summer 2012) – Cropped field showing no surface feature present.



Photo 10 Station 52-2– Todd Drain Branch (Summer 2012) – Cropped field showing no surface feature present.



Photo 11 Station 19-1 – McKinley Drain (Fall 2011) - Facing upstream (south) from Hubbard Line showing culvert, tile drainage inputs and channel overview.



Photo 12 Station 19-1 – McKinley Drain (Fall 2011) - Facing downstream (north) from Hubbard Line showing channel overview.

Filepath:



Photo 13 Station 19-1 – McKinley Drain (Spring 2012) – Facing upstream (south) showing channel and surrounding vegetation.



Photo 14 Station 19-1 – McKinley Drain (Spring 2012) – Facing downstream (north) showing channel and culvert.



Photo 15 Station 20-2 – Fisher Drain (Fall 2011) - Facing upstream (south) from Hubbard Line showing tile drainage inputs and channel overview. Channel was dry and populated by terrestrial vegetation upstream of the large pool.



Photo 16 Station 20-2 – Fisher Drain (Fall 2011) - Close-up of upstream algae lined culvert.



Photo 17 Station 20-2 – Fisher Drain (Fall 2011) - Downstream culvert outlet into Hickory Creek.



Photo 18 Station 19-3 – Unknown Drain 2 (Fall 2012) – Facing upstream (east) showing incised channel along south side of Hubbard Line.

Filepath:



Appendix B-7

Anderson Drain



Photo 1 Station 16-5 – Anderson Drain (Spring 2012) – Facing upstream (southeast) along Townsend Line showing incised channel and cattails.



Photo 2 Station 16-5 – Anderson Drain (Spring 2012) – Facing downstream (northwest) along Townsend Line showing cattail lined channel.



Photo 3 Station 17-2 – Anderson Drain (Fall 2011) - Facing upstream (east) along Townsend Line showing channel lined with thick cattails.



Photo 4 Station 17-2 – Anderson Drain (Fall 2011) - Facing downstream (west) along Townsend Line showing channel lined with thick cattails and patches of *Phragmites*.



Photo 5 Station 17-3 – Anderson Drain (Fall 2011) - Facing upstream (east) along Townsend Line from proposed crossing showing channel overview.



Photo 6 Station 17-3 – Anderson Drain (Fall 2011) - Facing downstream (west) along Townsend Line from proposed crossing showing channel overview.

Filepath:

Appendix B-8

Elliot Drain



Photo 1 Station 16-4 – Elliot Branch Drain (Fall 2011) – Facing upstream (east) along Townsend Line showing channel overview.



Photo 2 Station 16-4 – Elliot Branch Drain (Fall 2011) – Facing downstream (west) along the north side of Townsend Line showing cattail lined channel.



Photo 3 Station 16-1 – Elliot Drain (Fall 2011) - Facing upstream (south) from Townsend Line showing culvert and recently cleared channel.



Photo 4 Station 16-1 – Elliot Drain (Fall 2011) - Facing downstream (west) from roadside ditch show culvert and channel.



Photo 5 Station 16-2 – Elliot Drain (Spring 2012) – Facing upstream (southeast) from proposed crossing showing channel overview.



Photo 6 Station 16-2 – Elliot Drain (Spring 2012) – Facing downstream (northwest) from proposed crossing showing and surrounding vegetation.

Filepath:

Appendix B-9

North Street Drain



Photo 1 Station 16-3 – North Street Drain (Fall 2011) - Facing upstream (east) from Dolmage Road showing culvert and channel overview.



Photo 2 Station 16-3 – North Street Drain (Fall 2011) - Facing downstream (north) along Dolmage Road showing channel overview and surrounding vegetation.



Photo 3 Station 16-3 – North Street Drain (Spring 2012) – Facing upstream (east) showing channel and substrates.



Photo 4 Station 16-3 – North Street Drain (Spring 2012) – Facing downstream (northwest) showing channel and turbid flow.

Filepath:

Appendix B-10

Woods Creek



Photo 1 Station 10-1 – Woods Creek (Summer 2012) - Facing upstream (east) showing channel and large woody debris.



Photo 2 Station 10-1 – Woods Creek (Summer 2012) – Facing downstream showing channel overview.



Photo 3 Station 11-1 – Woods Creek (Fall 2011) - Facing upstream (east) along Cedar Point Line showing channel overview.



Photo 4 Station 11-1 – Woods Creek (Fall 2011) - Close-up of upstream culvert and deflection wall to divert westerly flow north.



Photo 5 Station 11-1 – Woods Creek (Fall 2011) – Facing west along Cedar Point Line showing close-up of culvert.



Photo 6 Station 11-1 – Woods Creek (Fall 2011) - Facing downstream (north) from Cedar Point Line showing culvert and braided flow through grasses.

Filepath:



Photo 7 Station 14-2 – Woods Creek (Spring 2012) – Facing upstream (east) showing channel and surrounding vegetation.



Photo 8 Station 14-2 – Woods Creek (Spring 2012) – Facing downstream (west) showing a channel overview.



Photo 9 Station 14-4 – Woods Creek (Summer 2012) – Facing upstream (southeast) from Fuller Road showing channel overview.



Photo 10 Station 11-2 – Woods Creek-1 (Summer 2012) – Facing west along Cedar Point Line at Rawlings Road showing channel and surrounding vegetation.



Photo 11 Station 52-1 – McCallum Drain (Spring 2012) – Facing upstream (south) along Elarton Road showing



Photo 12 Station 52-1 – McCallum Drain (Spring 2012) – Facing downstream (north) along Elarton Road showing cattail lined channel.

Filepath:



Photo 13 Station 51-3 – McCallum Drain (Summer 2012) - Facing upstream (south) from Townsend Line showing channel overview and aquatic vegetation.



Photo 14 Station 51-3 – McCallum Drain (Summer 2012) - Facing downstream (north) from Townsend Line showing channel overview and aquatic vegetation.



Photo 15 Station 11-2 – Woods Creek-1 (Fall 2012) – Facing southeast along Cedar Point Line showing incised channel lined with cattails.



Photo 16 Station 15-1 – Haney Drain (Spring 2012) – Facing upstream (east) showing channel and surrounding vegetation.



Photo 17 Station 15-1 – Haney Drain (Spring 2012) – Facing downstream (north) showing channel overview.



Photo 18 Station 12-2 – Brush Drain (Fall 2011) - Facing upstream (east) from Fuller Road showing culvert and channel overview.

Filepath:



Photo 19 Station 12-2 – Brush Drain (Fall 2011) - Facing downstream (west) from Fuller Road showing culvert and channel overview. Note the patch of watercress downstream of the culvert.



Photo 20 Station 12-1 – Brush Drain (Spring 2012) – Facing upstream (southeast) showing close-up of channel and aquatic vegetation.



Photo 21 Station 12-1 – Brush Drain (Spring 2012) – Facing downstream (northwest) showing channel and surrounding vegetation.



Photo 22 Station 14-3 – Brush Drain (Summer 2012) – Facing upstream (south) from existing farm crossing showing channel and surrounding vegetation.



Photo 23 Station 14-3 – Brush Drain (Summer 2012) – Facing downstream (north) from existing farm crossing showing Reed Canary Grass lined channel.



Photo 24 Station 12-3 – Brush Drain (Fall 2012) – Facing upstream showing channel overview.

Filepath:



Photo 25 Station 12-3 – Brush Drain (Fall 2012) – Facing downstream showing channel and surrounding vegetation.



Photo 26 Station 51-2 – South Boundary Drain (Summer 2012) – Facing upstream (southeast) showing channel overview and aquatic vegetation.



Photo 27 Station 51-2 – South Boundary Drain (Summer 2012) – Facing downstream (west) along Townsend Line showing channel and surrounding vegetation.



Photo 28 Station 51-1 – South Boundary Drain-1 (Summer 2012) – Facing upstream (east) along Townsend Line showing channel and surrounding vegetation.



Photo 29 Station 42-1 – Malley Drain (Fall 2012) – Facing East at Kinnaird Road showing channel overview.



Photo 30 Station 42-1 – Malley Drain (Fall 2012) – Facing west at Kinnaird Road showing channel and surrounding vegetation.

Filepath:

Appendix B-11

James Creek Drain



Photo 1 Station 13-1 – James Creek Drain (Spring 2012) – Facing upstream (south) from Lakeshore Road showing channel overview.



Photo 2 Station 13-1 – James Creek Drain (Spring 2012) – Facing downstream (northwest) from Lakeshore Road showing cattail lined channel.



Photo 3 Station 14-1 – James Creek Drain (Spring 2012) – Facing upstream (southeast) showing channel and in-water vegetation.



Photo 4 Station 14-1 – James Creek Drain (Spring 2012) – Facing downstream (west) showing channel overview.

Filepath:

Appendix B-12

Beith Creek Drain



Photo 1 Station 5-4 – Frayne Drain (Spring 2012) – Facing upstream (north) from Thomson Line showing channel and vegetation.



Photo 2 Station 5-4 – Frayne Drain (Spring 2012) – Facing downstream (south) from Thomson Line showing confluence with Lake Huron-F-2.



Photo 3 Station 4-3 – Frayne Drain (Fall 2011) - Facing upstream (south) from Thomson Line showing channel overview and 90° bend



Photo 4 Station 4-3 – Frayne Drain (Fall 2011) - Facing downstream along the south side of Thomson Line showing channel overview.



Photo 5 Station 4-3 – Frayne Drain (Fall 2011) - Facing northwest near the intersection of Rawlings and Thomson Line showing realigned channel.



Photo 6 Station 6-1 – Wadsworth Drain (Fall 2011) - Facing upstream (east) from Rawlings Road showing culvert and surrounding vegetation.

Filepath:



Photo 7 Station 6-1 – Wadsworth Drain (Fall 2011) - Facing downstream (west) from Rawlings Road showing channel overview.



Photo 8 Station 6-1 – Wadsworth Drain (Fall 2011) - Close-up of watercress observed near the downstream culvert.



Photo 9 Station 6-2 – Wadsworth Drain (Spring 2012) – Facing upstream (east) showing cattail lined channel.



Photo 10 Station 6-2 – Wadsworth Drain (Spring 2012) – Facing downstream showing channel linked with dense cattails.



Photo 11 Station 5-2 – Beith Creek Drain (Fall 2011) - Facing upstream (east) from Proof Line showing no channel definition.



Photo 12 Station 5-2 – Beith Creek Drain (Fall 2011) - Facing downstream (west) from Proof Line showing channel overview.

Filepath:



Photo 13 Station 5-1 – Beith Creek Drain (Fall 2011) – Facing upstream (east) along Proof Line showing culvert, tile drainage inputs and channel overview.



Photo 14 Station 5-1 – Beith Creek Drain (Fall 2011) – Facing downstream (north) from Proof Line showing culvert and channel overview. Note the watercress in the foreground.



Photo 15 Station 5-3 - Beith Creek Drain (Spring 2012) – Facing upstream (east) along Thompson Line showing culvert, pool and channel.



Photo 16 Station 5-3 - Beith Creek Drain (Spring 2012) – Facing downstream (north) showing large algae filled pool and channel overview.

Filepath:



Appendix B-13

Shashawandah Creek



Photo 1 Station 9-2 – Shashawandah Creek (Fall 2011) - Facing upstream (east) from within wooded area showing channel overview and flooded conditions.



Photo 2 Station 9-2 – Shashawandah Creek (Fall 2011) - Facing downstream (west) from within wooded area showing channel overview and flooded conditions.



Photo 3 Station 9-2 – Shashawandah Creek (Summer 2012) - Facing upstream (east) from within wooded area showing channel overview.

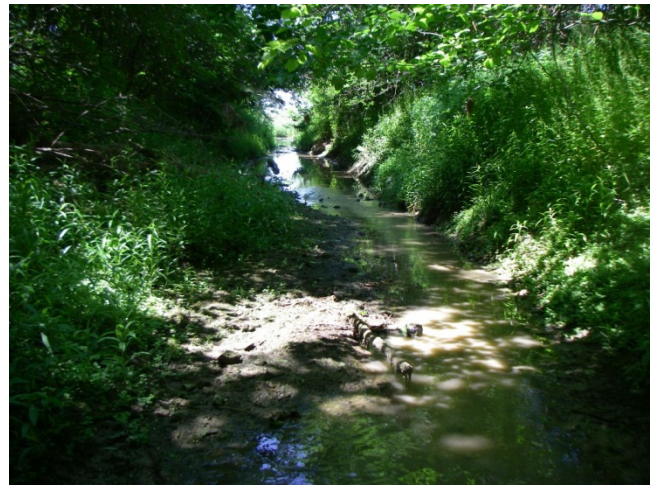


Photo 4 Station 9-2 – Shashawandah Creek (Summer 2012) - Facing downstream (west) from within wooded area showing channel overview.



Photo 5 Station 3-1 – Shashawandah Creek (Summer 2012) - Facing upstream (south), paralleling Kinnaird Road showing channel overview.



Photo 6 Station 3-1 – Shashawandah Creek (Summer 2012) - Facing downstream (north), paralleling Kinnaird Road showing channel overview.

Filepath:



Photo 7 Station 2-6 – Shashawandah Creek (Summer 2012) - Facing upstream (north), showing channel overview.



Photo 8 Station 2-6 – Shashawandah Creek (Summer 2012) - Facing downstream (south), showing channel overview.



Photo 9 Station 9-5 – Shashawandah Creek (Summer 2012) - Facing downstream (north) showing dry channel and aquatic vegetation.



Photo 10 Station 9-5 – Shashawandah Creek (Summer 2012) - Facing upstream (south) at concrete bridge showing dry channel and aquatic vegetation.

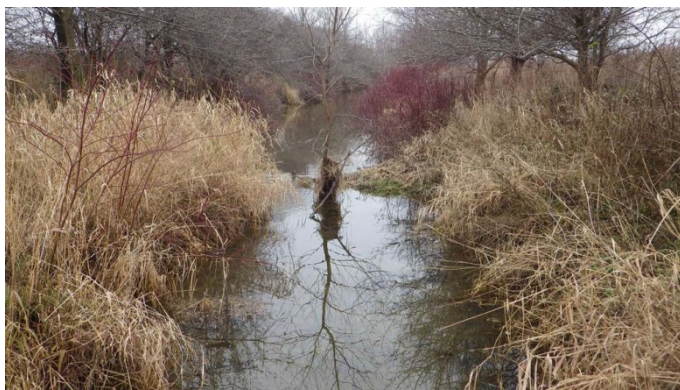


Photo 11 Station 3-2 – Shashawandah Creek (Fall 2012) – Facing upstream showing channel overview.



Photo 12 Station 3-2 – Shashawandah Creek (Fall 2012) – Facing downstream showing channel and riparian vegetation.

Filepath:



Photo 13 Station 9-1 – Russel Drain (Summer 2012) - Facing upstream (south) from Cedar Point Line showing culvert.



Photo 14 Station 9-1 – Russel Drain (Summer 2012) - Facing downstream (north) from Cedar Point Line showing channel.



Photo 15 Station 4-1 – Ross Drain (Fall 2011) - Facing upstream (east) along Thomson Line showing culvert and channel overview.



Photo 16 Station 4-1 – Ross Drain (Fall 2011) - Facing downstream (north) from Thomson Line showing culvert and channel overview.



Photo 17 Station 4-4 – Ross Drain (Fall 2012) – Facing upstream showing channel overview.



Photo 18 Station 4-4 – Ross Drain (Fall 2012) – Facing downstream showing incised channel and riparian vegetation.

Filepath:



Photo 19 Station 4-2 – Stewardson Drain (Fall 2011) - Facing upstream (south) from Thomson Line showing channel overview.



Photo 20 Station 4-2 – Stewardson Drain (Fall 2011) - Facing downstream (north) from Thomson Line showing channel overview.



Photo 21 Station 4-5 – Stewardson Drain (Fall 2012) – Facing upstream showing recently cleared channel.



Photo 22 Station 4-5 – Stewardson Drain (Fall 2012) – Facing downstream showing incised channel.

Filepath:



Appendix B-14

Duffus Drain



Photo 1 Station 2-5 – Lusby Drain (Fall 2011) - Facing upstream (east) along Thomson Line showing channel overview.



Photo 2 Station 2-5 – Lusby Drain (Fall 2011) - Facing downstream (west) along Thomson Line showing channel overview.



Photo 3 Station 2-5 – Lusby Drain (Fall 2011) - Facing upstream (east) along Thomson Line showing channel overview.



Photo 4 Station 2-5 – Lusby Drain (Fall 2011) - Facing downstream (west) along Thomson Line showing channel overview.



Photo 5 Station 2-2 – Lusby Drain (Fall 2011) - Facing upstream (south) from farm crossing showing culvert and channel overview.



Photo 6 Station 2-2 – Lusby Drain (Fall 2011) - Facing downstream (north) from farm crossing showing culvert and channel overview.

Filepath:



Photo 7 Station 2-4 – Duffus Drain (Summer 2012) - Facing upstream (east) along Thomson Line showing channel.



Photo 8 Station 2-4 – Duffus Drain (Summer 2012) - Facing downstream (north) from Thomson Line showing channel overview.



Photo 9 Station 2-1 – Duffus Drain (Summer 2012) - Facing upstream (east) from farm crossing showing channel overview.



Photo 10 Station 2-1 – Duffus Drain (Summer 2012) -Facing downstream (west) towards station 2-2 showing channel overview.



Photo 11 Station 2-7 – Duffus Drain (Fall 2012) – Facing upstream from existing crossing, showing channel overview.

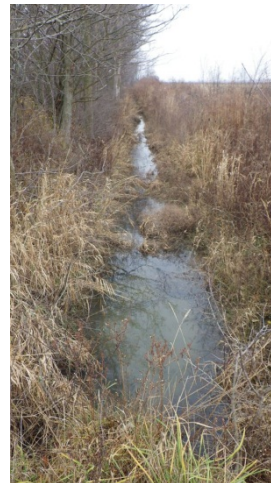


Photo 12 Station 2-7 – Duffus Drain (Fall 2012) – Facing downstream from existing crossing, showing channel overview.

Filepath:



Photo 13 Station 1-3 – Walden Drain (Summer 2012) - Facing upstream (south) from Ravenswood Line showing channel and adjacent agricultural field.



Photo 14 Station 1-3 – Walden Drain (Summer 2012) - Facing downstream (west) along the south side of Ravenswood Line.

Filepath:



Client/Project	January 2013
Suncor Energy	160960709
Cedar Point Wind Power Project	

Appendix	Page
B	3 of 3

Title
Duffus Drain Photographic Record

Appendix B-15

Mud Creek



Photo 1 Station 53-1 – Mud Creek (Summer 2012) - Facing upstream (south) showing channel overview.



Photo 2 Station 53-1 – Mud Creek (Summer 2012) - Facing downstream (north) showing channel overview.



Photo 3 Station 53-4 – Mud Creek (Summer 2012) – Facing upstream from property boundary showing channel overview.



Photo 4 Station 53-4 – Mud Creek (Summer 2012) – Facing downstream showing channel and riparian vegetation.



Photo 5 Station 53-5 – Mud Creek-1 (Summer 2012) – Showing depression lined with terrestrial vegetation.



Photo 6 Station 53-5 – Mud Creek-1 (Summer 2012) – Showing outlet of piped/tiled watercourse under Mud Creek-1, outlets into floodplain of Mud Creek.

Filepath:



Photo 7 Station 53-2 – 10th Concession Drain (Summer 2012) - Facing upstream (south) showing channel overview.



Photo 8 Station 53-2 – 10th Concession Drain (Summer 2012) - Facing downstream (north) showing channel.



Photo 9 Station 53-3 – 10th Concession Drain (Summer 2012) - Facing upstream (south) showing channel overview.



Photo 10 Station 53-3 – 10th Concession Drain (Summer 2012) - Facing downstream (north) showing an overview of channel.



Photo 11 Station 1-4 – 10th Concession Drain (Fall 2011) - Facing upstream (south) along Army Camp Road showing channel overview and road RoW.



Photo 12 Station 1-4 – 10th Concession Drain (Fall 2011) - Facing downstream (north) along Army Camp Road showing channel overview and road RoW.

Filepath:

Appendix B-16

Golden Creek



Photo 1 Station 43-1 – Elliot McBryan Drain (Fall 2011) - Facing upstream (south) from Thomson Line showing flooded channel.



Photo 2 Station 43-1 – Elliot McBryan Drain (Fall 2011) - Facing downstream (north) from Thomson Line showing flooded channel.



Photo 3 Station 43-1 – Elliot McBryan Drain (Summer 2012) - Facing upstream (south) from Thomson Line showing channel and riparian vegetation.



Photo 4 Station 43-1 – Elliot McBryan Drain (Summer 2012) - Facing downstream (north) from Thomson Line showing channel.

Filepath: