

# The Cedar Point & Rawlings Road Wetland Complex in Lambton Shores Ontario

# Proof Line

- Trees cut by Suncor
- Trees presumably cut by Leaseholder 3
- Transmission Line Route

Fuller Rd

Fuller Road

PSW

Provincially Significant Wetland (PSW)

Leaseholder 3

Leaseholder 2

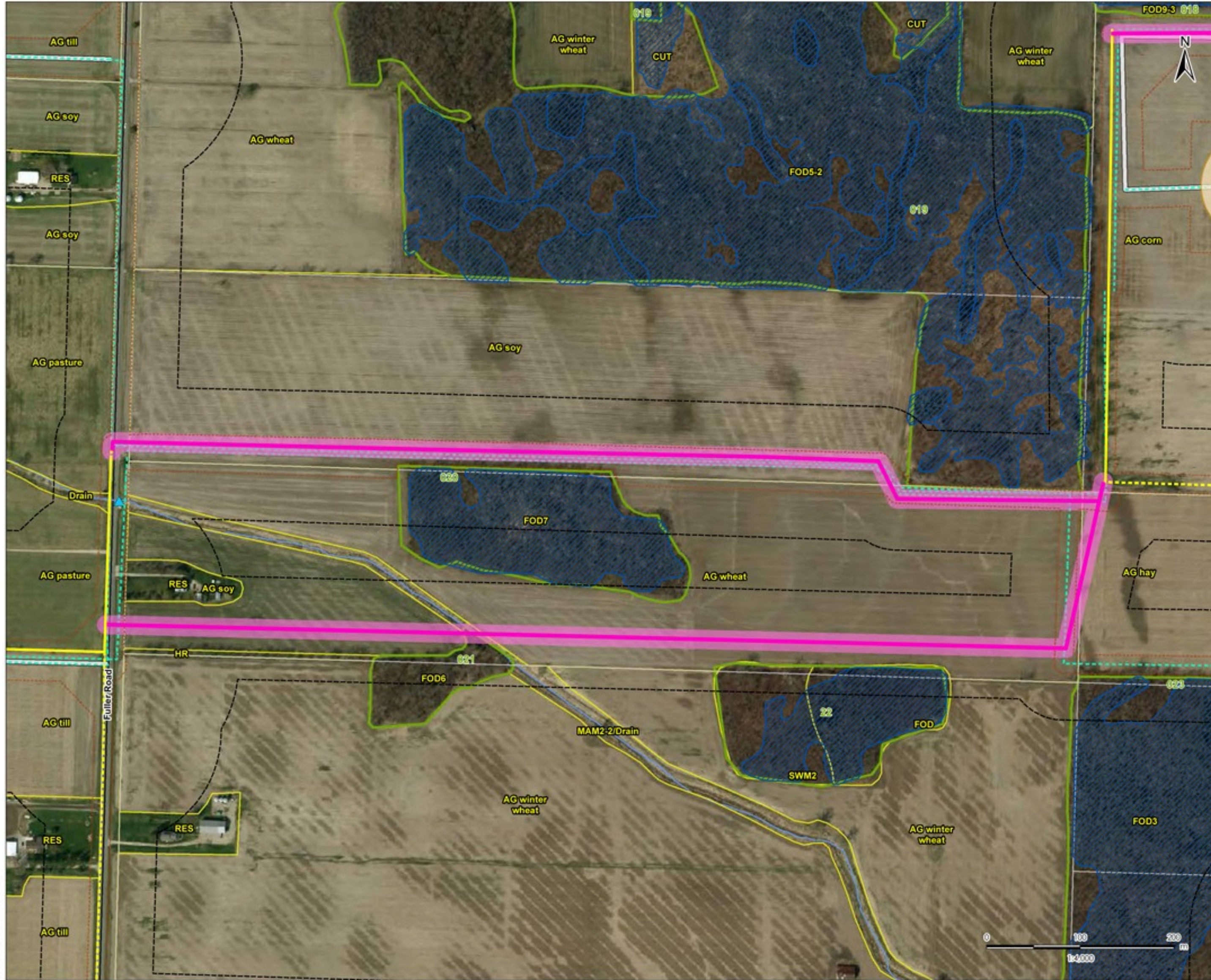
PSW

Leaseholder 1

PSW

PSW

Google



- Legend**
- Zone of Investigation
  - New/ Modified Infrastructure**
    - Amended Transmission Line Route Option to Avoid New PSW
    - Overhead Transmission Line Constructible Area
  - Previously Assessed**
    - Proposed Turbine Location
    - Access Road
    - Collector Line
    - Transmission Line- Preferred Route
    - Transmission Line- Other Route Option
    - Previously Assessed Constructible Area
  - Existing Features**
    - Aquatic Sampling Station
    - ELC Community Boundary
    - Watercourse
    - Road
    - Woodland Natural Feature (Stantec)
    - Property Boundary
  - Wetland- MNR**
    - Provincially Significant Wetlands



- Notes**
- Coordinate System: NAD 1983 UTM Zone 17N
  - Base features produced under license with the Ontario Ministry of Natural Resources © Queen's Printer for Ontario, 2013.
  - Imagery Source - Suncor Energy. Includes material © 2012 of the Queen's printer for Ontario. All rights reserved. Imagery Date: 2010

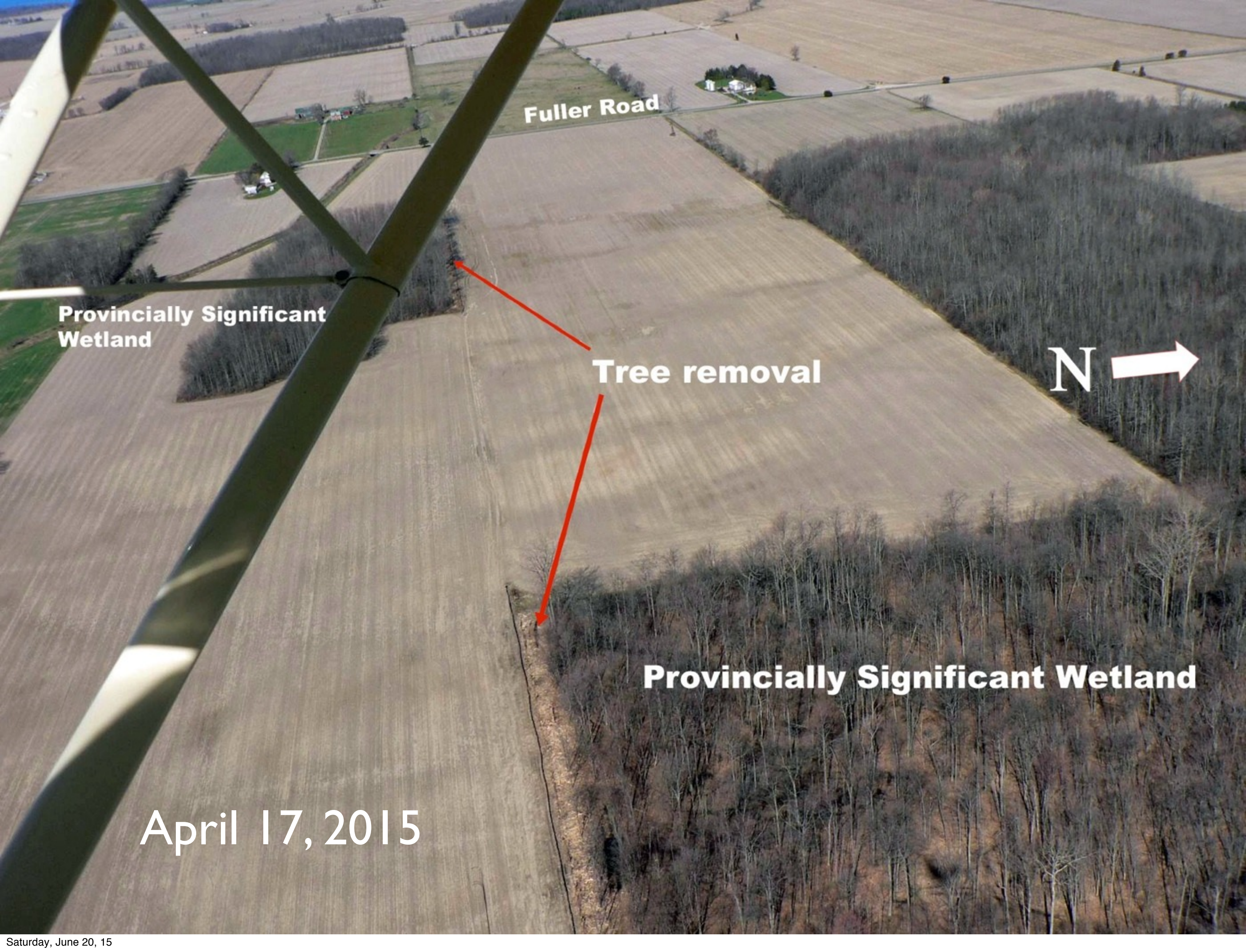
Client/Project  
 Suncor Energy  
 Cedar Point Wind Power Project

Figure No.  
**8**

Title  
**Natural Features – Proposed Transmission Line**

W:\projects\160960709\160960709\Addendum\160960709\_Fig008\_TLine\_Addendum\_ArOE\_20140527.mxd  
 Revised: 2014-05-27 by: dhaney





**Fuller Road**

**Provincially Significant Wetland**

**Tree removal**



**Provincially Significant Wetland**

**April 17, 2015**



- Legend**
- Zone of Investigation
  - New/ Modified Infrastructure**
    - Amended Transmission Line Route Option to Avoid New PSW
    - Overhead Transmission Line Constructible Area
  - Previously Assessed**
    - Proposed Turbine Location
    - Access Road
    - Collector Line
    - Transmission Line- Preferred Route
    - Transmission Line- Other Route Option
    - Previously Assessed Constructible Area
  - Existing Features**
    - ▲ Aquatic Sampling Station
    - ELC Community Boundary
    - Watercourse
    - Road
    - Woodland Natural Feature (Stantec)
    - Property Boundary
  - Wetland- MNR**
    - Provincially Significant Wetlands



- Notes**
1. Coordinate System: NAD 1983 UTM Zone 17N
  2. Base features produced under license with the Ontario Ministry of Natural Resources © Queen's Printer for Ontario, 2013.
  3. Imagery Source: Suncor Energy. Includes material © 2012 of the Queen's printer for Ontario. All rights reserved. Imagery Date: 2010

Client/Project  
 Suncor Energy  
 Cedar Point Wind Power Project

Figure No.  
**1.2**

Title  
**Natural Features- Proposed Transmission Line Revision 2**

W:\sectors\0960709\drawing\MKD\Addressum\160960709\_FigXXXI\_Line\_WetlandAddressumMapbook\_20140523.mxd  
 Revised: 2014-05-21 By: dhanvay

**N** ↑

**Access road**

**PROOF LINE**

**Turbine 13**

**Provincially Significant  
Wetland**

**Tree  
removal**

**Turbine 14**

**April 17, 2015**

An aerial photograph taken from a vehicle, showing a road and a forest. The road is a light-colored, unpaved path that curves through the landscape. The forest is a dense, dark green area. The image is taken from a high angle, looking down at the road and forest. The text "April 17, 2015" is overlaid on the image in white. The image is rotated 90 degrees clockwise.

April 17, 2015





May 18, 2015  
Access road from Proof Line

# Proof Line

- Trees cut by Suncor
- Trees presumably cut by Leaseholder 3
- Transmission Line Route

Fuller Rd

Fuller Road

PSW

Provincially Significant Wetland (PSW)

Leaseholder 3

Leaseholder 2

PSW

Leaseholder 1

PSW

PSW

Google



April 17, 2015



May 7, 2015



May 7, 2015



May 7, 2015



May 7, 2015



May 7, 2015





May 7, 2015



June 4, 2015

# Recommendations

# Johnson & Johnson Response to Tylenol Tampering, 1982

Still considered to be the benchmark for crisis management.

All Suncor staff involved in the Cedar Point project should be required to read the Harvard Business Review case study and summarize their learning for the CLC group.

<https://hbr.org/product/johnson-johnson-the-tylenol-tragedy/an/583043-PDF-ENG>

From Johnson & Johnson CEO  
James E. Burke  
Five Crisis Management Truths:

1. Be forthcoming and honest
2. Act quickly and decisively
3. Take responsibility, even if you don't have to
4. Treat people with respect
5. Good behavior pays dividends