

Figure 4

Bornish Wind Energy Centre Comparative Layout - Southwest



- Legend**
- ▬ New Project Area (120m Buffer)
 - ▬ Previous Project Area (120m Buffer)
 - ▭ New Layout
 - ▭ Previous Layout
 - New Footprint
 - Removed Footprint
 - Turbine
 - MET Station
 - Existing Transmission Line
 - Railroad
 - Primary Road
 - Secondary Road



Map Produced by Natural Resource Solutions Inc. This map is proprietary and confidential and must not be duplicated or distributed by any means without express written permission of NRSI. Source: Data provided by MNR. Copyright: Queen's Printer Ontario. Airphotos: SWOOP 2006

Project: 1231 Date: July 10, 2012	NAD83 - UTM Zone 17 Scale: 1:20,000 (11x17")
--------------------------------------	---

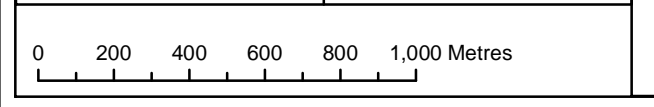


Figure 5

Bornish Wind Energy Centre Comparative Layout - Southeast



- Legend**
- - - New Project Area (120m Buffer)
 - - - Previous Project Area (120m Buffer)
 - New Layout
 - Previous Layout
 - New Footprint
 - Removed Footprint
 - Turbine
 - Existing Transmission Line
 - Railroad
 - Primary Road
 - Secondary Road

NATURAL RESOURCE SOLUTIONS INC.
Aquatic, Terrestrial and Wetland Biologists

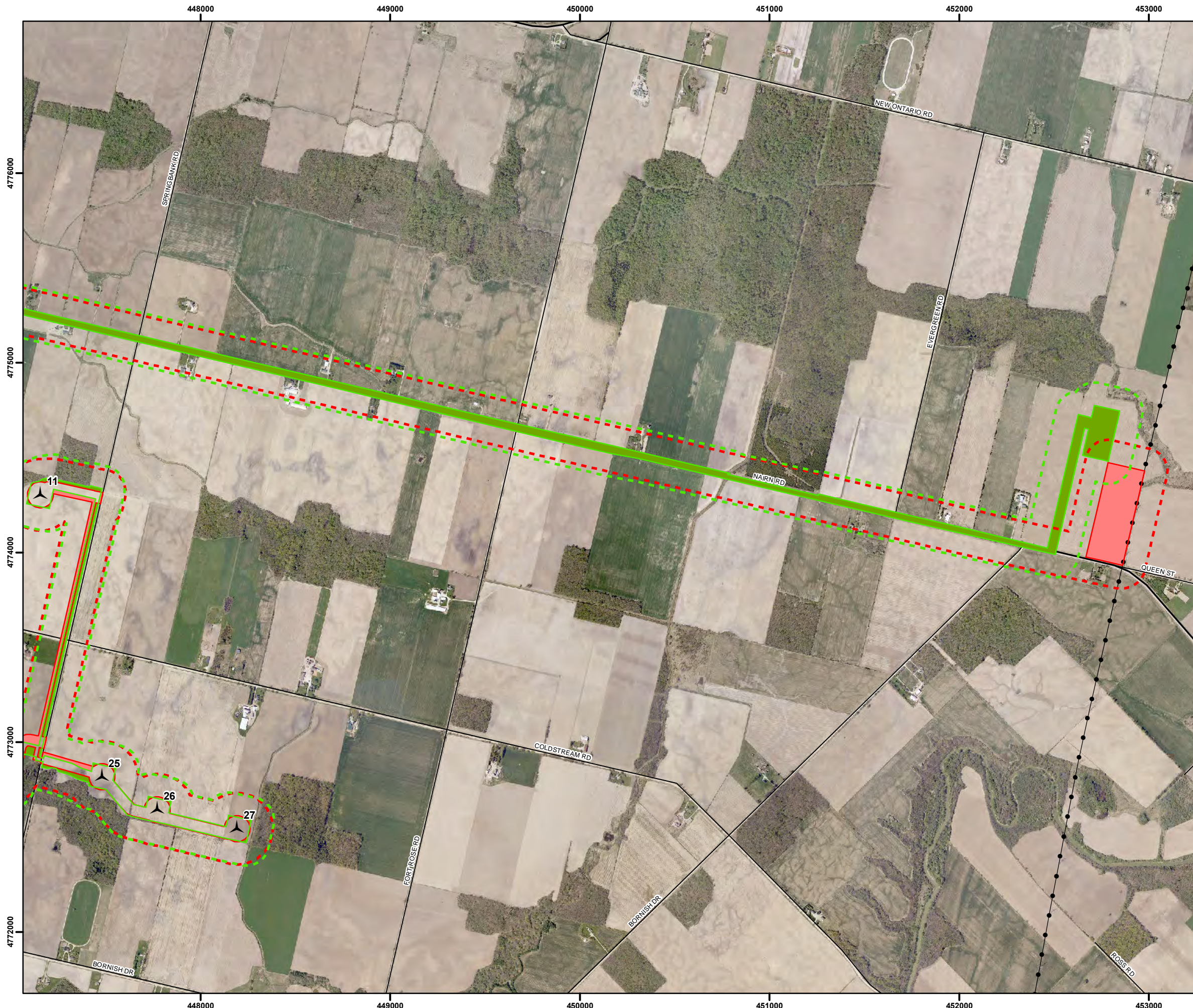
Map Produced by Natural Resource Solutions Inc. This map is proprietary and confidential and must not be duplicated or distributed by any means without express written permission of NRSI. Source: Data provided by MNR. Copyright: Queen's Printer Ontario. Airphotos: SWOOP 2006

Project: 1231 Date: July 10, 2012	NAD83 - UTM Zone 17 Scale: 1:20,000 (11x17")
--------------------------------------	---

N

Figure 6

Bornish Wind Energy Centre Comparative Layout - T-Line

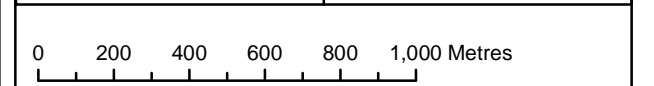


- Legend**
- - - New Project Area (120m Buffer)
 - - - Previous Project Area (120m Buffer)
 - New Layout
 - Previous Layout
 - New Footprint
 - Removed Footprint
 - Turbine
 - Interconnection Facilities
 - Existing Transmission Line
 - Railroad
 - Primary Road
 - Secondary Road



Map Produced by Natural Resource Solutions Inc. This map is proprietary and confidential and must not be duplicated or distributed by any means without express written permission of NRSI. Source: Data provided by MNR. Copyright: Queen's Printer Ontario. Airphotos: SWOOP 2006

Project: 1231 Date: July 10, 2012	NAD83 - UTM Zone 17 Scale: 1:20,000 (11x17")
--------------------------------------	---



4.0 Amendments to the Records Review

The study area initially examined for the Bornish Wind Energy Centre Records Review Report extended beyond the previously proposed project area to help compensate for any later changes in the project's layout. Upon review of the changes to the project's layout, all project areas of the current layout were previously studied and included with the Records Review submission to the MNR. Thus, there are no new habitats of seasonal concentrations of animals, rare vegetation communities or specialized habitats for wildlife, species of conservation concern, or other natural features that need to be amended in the NHA.

5.0 Amendments to the Site Investigation

By reviewing the changes made to the Bornish Wind Energy Centre layout since its NHA confirmation, it has been verified that these alterations have only led to changes in distance between project components and natural features and has not resulted in any new features being included in the project area. Since there are no new features that need to be studied, it has been determined that further site investigation is unnecessary.

Given the changes in project location, described and mapped above, NRSI has identified that there are several instances where the project location is now closer to natural features that had been identified as being within 120m of the project location. Each of these specific instances has been outlined below (Table 2), including feature identification number, feature type, and comparison of distances from project location to natural feature between the presented layouts.

In addition, NRSI biologists have also reviewed the potential for additional generalized candidate wildlife habitat that may be present within 120m of the amended project location. Due to the small changes in the distances between project components and natural features, no addendums to generalized habitats were identified.

Table 2. Updated Distances between Project Components and Natural Features in the Bornish Wind Energy Centre

Feature ID	Feature Type	Distances from NHA Submission	New Layout Distances	Amendment to the EOS and/or EIS Required? (Y/N)
WOD-002 AWO-001	Woodland Amphibian Woodland Breeding Habitat	WT – 78 AR – 6 OL – 29 UL – 6 SI – >120	WT – 75 AR – 8 OL – >120 UL – 16 SI – >120	No - EOS completed with NHA. Distances did not change enough to warrant amendment to the EIS.
WOD-003 AWO-003	Woodland Amphibian Woodland Breeding Habitat	WT – 42 AR – 6 OL – 7 UL – 6 SI – >120	WT – 33 AR – 11 OL – >120 UL – 17 SI – >120	No - EOS completed with NHA. Distances did not change enough to warrant amendment to the EIS.
WOD-004 VAL-004	Woodland Valleyland	WT – 56 AR – >0.1 OL – 23 UL – <0.1 SI – >120	WT – 45 AR – 12 OL – 8 UL – 29 SI – >120	No - EOS completed with NHA. Distances did not change enough to warrant amendment to the EIS.
WOD-006 AWO-002	Woodland Amphibian	WT – 93 AR – 4	WT – 34 AR – 3	No - EOS completed with NHA. Distances did not

Feature ID	Feature Type	Distances from NHA Submission	New Layout Distances	Amendment to the EOS and/or EIS Required? (Y/N)
	Woodland Breeding Habitat	OL - >120 UL - Overlapping SI - >120	OL - >120 UL - Overlapping SI - >120	change enough to warrant amendment to the EIS.
RWA-002	Raptor Wintering Area	WT - 93 AR - >0.1 OL - > 120 UL - >0.1 SI - > 120	WT - 83 AR - 3 OL - >120 UL - 22 SI - >120	No - EOS completed with NHA. Distances did not change enough to warrant amendment to the EIS.
WOD-007 BMA-009	Woodland Bat Maternity Colony	WT - 49 AR - 5 OL - >120 UL - 5 SI - >120	WT - 37 AR - 18 OL - >120 UL - 32 SI - >120	No - EOS completed with NHA. Distances did not change enough to warrant amendment to the EIS.
WOD-008	Woodland	WT - 44 AR - 7 OL - >120 UL - Overlapping SI - >120	WT - 36 AR - 13 OL - >120 UL - Overlapping SI - >120	No - EOS completed with NHA. Distances did not change enough to warrant amendment to the EIS.
WOD-009	Woodland	WT - 42 AR - 92 OL - >120 UL - 4 SI - >120	WT - 39 AR - 44 OL - >120 UL - 5 SI - >120	No - EOS completed with NHA. Distances did not change enough to warrant amendment to the EIS.
WOD-010	Woodland	WT - 55 AR - 105 OL - >120 UL - >0.1 SI - >120	WT - 43 AR - 49 OL - >120 UL - 10 SI - >120	No - EOS completed with NHA. Distances did not change enough to warrant amendment to the EIS.
WOD-012	Woodland	WT - 47 AR - 92 OL - >120 UL - 92 SI - >120	WT - 38 AR - 44 OL - >120 UL - 92 SI - >120	No - EOS completed with NHA. Distances did not change enough to warrant amendment to the EIS.
WOD-014 BMA-008	Woodland Bat Maternity Colony	WT - 57 AR - >0.1 OL - >120 UL - >0.1 SI - >120	WT - 47 AR - 9 OL - >120 UL - 16 SI - >120	No - EOS completed with NHA. Distances did not change enough to warrant amendment to the EIS.
WOD-015 BMA-010	Woodland Bat Maternity Colony	WT - 76 AR - 5 OL - >120 UL - 5 SI - >120	WT - 68 AR - 61 OL - >120 UL - 99 SI - >120	No - EOS completed with NHA. Distances did not change enough to warrant amendment to the EIS.
WOD-016 BMA-011	Woodland Bat Maternity Colony	WT - 48 AR - 0.4 OL - >120 UL - 0.4 SI - >120	WT - 48 AR - 50 OL - >120 UL - 73 SI - >120	No - EOS completed with NHA. Distances did not change enough to warrant amendment to the EIS.
WOD-018	Woodland	WT - 40 AR - 7 OL - >120 UL - 7 SI - >120	WT - 40 AR - 18 OL - >120 UL - 35 SI - >120	No - EOS completed with NHA. Distances did not change enough to warrant amendment to the EIS.
WOD-020	Woodland	WT - >120 AR - >120 OL - >120	WT - >120 AR - >120 OL - >120	No - EOS completed with NHA. Distances did not change enough to

Feature ID	Feature Type	Distances from NHA Submission	New Layout Distances	Amendment to the EOS and/or EIS Required? (Y/N)
		UL – 110 SI – >120	UL – 90 SI – >120	warrant amendment to the EIS.
WOD-022 BMA-013	Woodland Bat Maternity Colony	WT – 48 AR – 82 OL – >120 UL – 82 SI – >120	WT – 33 AR – 40 OL – >120 UL – 85 SI – >120	No - EOS completed with NHA. Distances did not change enough to warrant amendment to the EIS.
WOD-023 BMA-016	Woodland Bat Maternity Colony	WT – 63 AR – 14 OL – 90 UL – 14 SI – >120	WT – 60 AR – 2 OL – 90 UL – 21 SI – >120	No - EOS completed with NHA. Distances did not change enough to warrant amendment to the EIS.
WOD-024 BMA-017	Woodland Bat Maternity Colony	WT – 21 AR – 11 OL – 9 UL – 11 SI – >120	WT – 22 AR – 35 OL – 9 UL – 11 SI – >120	No - EOS completed with NHA. Distances did not change enough to warrant amendment to the EIS.
WOD-025 WET-025	Woodland Wetland	WT – >120 AR – >120 OL – 35 UL – >120 SI – >120	WT – >120 AR – >120 OL – 23 UL – >120 SI – >120	No - EOS completed with NHA. Distances did not change enough to warrant amendment to the EIS.
WOD-027	Woodland	WT – >120 AR – 6 OL – >120 UL – >120 SI – >120	WT – >120 AR – 22 OL – >120 UL – >120 SI – >120	No - EOS completed with NHA. Distances did not change enough to warrant amendment to the EIS.
WOD-028	Woodland	WT – 90 AR – 6 OL – >120 UL – 6 SI – >120	WT – 87 AR – 3 OL – >120 UL – 17 SI – >120	No - EOS completed with NHA. Distances did not change enough to warrant amendment to the EIS.
WOD-029	Woodland	WT – 82 AR – 115 OL – >120 UL – 2 SI – >120	WT – 83 AR – 87 OL – >120 UL – 10 SI – >120	No - EOS completed with NHA. Distances did not change enough to warrant amendment to the EIS.
WOD-030 WET-030	Woodland Wetland	WT – 89 AR – 73 OL – >120 UL – 73 SI – >120	WT – 87 AR – 93 OL – >120 UL – 66 SI – >120	No - EOS completed with NHA. Distances did not change enough to warrant amendment to the EIS.
WOD-031	Woodland	WT – 70 AR – 64 OL – >120 UL – 64 SI – >120	WT – 65 AR – 81 OL – >120 UL – 97 SI – >120	No - EOS completed with NHA. Distances did not change enough to warrant amendment to the EIS.
WOD-045	Woodland	WT – >120 AR – >120 OL – 15 UL – >120 SI – >120	WT – >120 AR – >120 OL – 5 UL – >120 SI – >120	No - EOS completed with NHA. Distances did not change enough to warrant amendment to the EIS.
WOD-046	Woodland	WT – >120 AR – >120 OL – 12 UL – >120 SI – >120	WT – >120 AR – >120 OL – 10 UL – >120 SI – >120	No - EOS completed with NHA. Distances did not change enough to warrant amendment to the EIS.

Feature ID	Feature Type	Distances from NHA Submission	New Layout Distances	Amendment to the EOS and/or EIS Required? (Y/N)
WOD-047 VAL-047	Woodland Valleyland	WT - >120 AR - >120 OL - 20 UL - >120 SI - >120	WT - >120 AR - >120 OL - 12 UL - >120 SI - >120	No - EOS completed with NHA. Distances did not change enough to warrant amendment to the EIS.
WOD-048	Woodland	WT - >120 AR - >120 OL - 5 UL - >120 SI - >120	WT - >120 AR - >120 OL - 3 UL - >120 SI - >120	No - EOS completed with NHA. Distances did not change enough to warrant amendment to the EIS.
WOD-052	Woodland	WT - >120 AR - >120 OL - >120 UL - >120 SI - 10	WT - >120 AR - 63 OL - >120 UL - >120 SI - 53	No - EOS completed with NHA. Distances did not change enough to warrant amendment to the EIS.
WET-002A	Wetland	WT - >120 AR - 91 OL - 105 UL - 91 SI - >120	WT - >120 AR - 110 OL - 105 UL - 104 SI - >120	No - EOS completed with NHA. Distances did not change enough to warrant amendment to the EIS.
WET-002B	Wetland	WT - 45 AR - 12 OL - >120 UL - 12 SI - >120	WT - 40 AR - 54 OL - >120 UL - 43 SI - >120	No - EOS completed with NHA. Distances did not change enough to warrant amendment to the EIS.
WET-002C	Wetland	WT - 109 AR - 24 OL - >120 UL - 24 SI - >120	WT - 109 AR - 29 OL - >120 UL - 29 SI - >120	No - EOS completed with NHA. Distances did not change enough to warrant amendment to the EIS.
WET-003	Wetland	WT - 100 AR - 6 OL - 35 UL - 6 SI - >120	WT - 100 AR - 20 OL - >120 UL - 28 SI - >120	No - EOS completed with NHA. Distances did not change enough to warrant amendment to the EIS.
WET-010	Wetland	WT - 55 AR - 109 OL - >120 UL - >0.1 SI - >120	WT - 58 AR - 37 OL - >120 UL - 17 SI - >120	No - EOS completed with NHA. Distances did not change enough to warrant amendment to the EIS.
WET-014	Wetland	WT - 70 AR - 5 OL - >120 UL - 5 SI - >120	WT - 65 AR - 31 OL - >120 UL - 40 SI - >120	No - EOS completed with NHA. Distances did not change enough to warrant amendment to the EIS.
WET-018	Wetland	WT - 115 AR - 50 OL - >120 UL - 50 SI - >120	WT - >120 AR - 98 OL - >120 UL - 110 SI - >120	No - EOS completed with NHA. Distances did not change enough to warrant amendment to the EIS.

Legend

WT: Wind Turbine

AR: Access Road

OL: Overhead Line

UL: Underground Line

SI: Supporting Infrastructure (Laydown area, point of intersection or MET station)

EOS: Evaluation of Significance

6.0 Amendments to the Evaluation of Significance

As part of this addendum, NRSI biologists have reviewed the potential for changes to the Evaluation of Significance phase of this project. After examining the changes in distances between project components and natural features, it has been determined that there are no natural features that there are no new natural features or wildlife habitats that potentially exist within 120m of the project location that were not already previously studied and discussed in the approved NHA. Therefore, no additional features require evaluation of significance. Additionally, since there are minimal changes in these distances, there are no features that are no longer within 120m of a project location.

No additional Evaluation of Significance is required for the Bornish Wind Energy Centre as a result of these minor modifications.

7.0 Amendments to the Environmental Impact Study

As part of the Bornish Wind Energy Centre NHA addendum preparation, construction plans were reviewed and the changes to the presented project location have been summarized in Section 3.0. These proposed changes include minor modifications to several aspects of the project layout, including access roads, and underground and overhead cabling. Although minor adjustments have been noted, the construction details as presented in the original Natural Heritage Environmental Impact Study (i.e. site preparation and servicing, construction, operation, decommissioning, and approach to impact assessment) still provide relevant information pertaining to the type, extent, duration, and details of the proposed construction activities associated with the Bornish Wind Energy Centre.

For the purposes of this addendum, NRSI has reviewed three separate aspects relating to the potential for change to the EIS, as follows:

- Changes to Mitigation Measures (i.e. project location now closer to natural features)
- New Mitigation Measures (i.e. project location within 120m of a new feature)
- Changes to Monitoring Requirements

7.1 Changes to Mitigation Measures

NRSI biologists have reviewed the changes in project location, including the distances of the project location to the significant natural features, and have determined that the mitigation measures presented in the Natural Heritage Environmental Impact Study (NRSI 2012) are still suitable for the protection of the significant natural features from permanent and adverse impacts that may result from the development of the Bornish Wind Energy Centre.

The addition of the MET station located north of WOD-006 will include additional underground cabling, but there will be no permanent access road at this location. Mitigation included in the EIS will cover these additional construction activities, as this woodland currently has underground cabling proposed adjacent to the natural feature, east of the MET station. No new mitigation measures are proposed for features that had already been identified as significant, but are now slightly closer to the project location.

7.2 New Mitigation Measures

It was concluded that there are no additional significant natural features within the project area; therefore, no new mitigation measures need to be implemented for this project.

7.3 Changes to Monitoring Requirements

Based on the minor changes in project location, NRSI has determined that the monitoring requirements identified in the Natural Heritage Environmental Impact Study are suitable for the monitoring of potential environmental effects of the proposed Bornish Wind Energy Centre.

8.0 Summary of Natural Heritage Amendments

In accordance with the REA Regulation, NRSI biologists have completed a comprehensive records review, site investigation, evaluation of significance, and EIS of the Bornish Wind Energy Centre project area. Following the review of proposed adjustments to the project location (as discussed above), NRSI has re-considered all aspects of the Natural Heritage Assessment within this report to determine if there are new natural features, changes in distance to project location, or new mitigation measures or monitoring commitments required to ensure that potential permanent or adverse environmental impacts are mitigated or studied appropriately. The summary of the result of this review of changes to the project location are summarized in Table 3 below.

Table 3. Summary of Natural Heritage Addendum for the Bornish Wind Energy Centre

Addendum Changes	Addendum Result
Significant Features	NRSI has not identified any additional significant natural features or wildlife habitats within the project area. Furthermore, no natural features or wildlife habitats have been removed from the project area due to addendums to the project's layout.
Changes in Distances to Project Location	<p>The distances from the project location to candidate and significant natural features and wildlife habitats have changed due to minor adjustments to the project layout. These changes in distances to project location are associated with a total of 51 significant natural features.</p> <p>Changes in distances from the project location to significant natural features are shown in Table 2 of this report.</p>
Mitigation Measures	Based on the minor adjustments of the project location, NRSI biologists have identified no additional significant features within 120m of the project location that require mitigation measures to be applied. All other mitigation measures, as seen in the Natural Heritage Environmental Impact Study (NRSI 2012) will provide the appropriate protection to ensure any permanent and adverse impacts are mitigated.
Monitoring Commitments	<p>NRSI has identified that, based on the minor shifts in project location, the monitoring commitments outlined in the Natural Heritage Environmental Impact Study (NRSI 2012) are still appropriate to monitor any potentially adverse impacts of this project.</p> <p>No additional monitoring requirements are proposed as a result of the changes in project location.</p>

With this addendum, it is maintained that with the implementation of the planned mitigation measures, monitoring programs, and contingency plans as presented in the Bornish Wind Energy Centre: Natural Heritage Environmental Impact Study (NRSI 2012), along with any additional mitigation measures and monitoring commitments

provided above, there is unlikely to be any significant impacts to natural heritage features, including woodlands, wetlands, valleylands, or significant wildlife habitat.

9.0 References

Publications

Natural Resource Solutions Inc. (NRSI). 2012. Bornish Wind Energy Centre Natural Heritage Assessment. April 2012.

Appendix I
Bornish Wind Energy Centre NHA Letter of Confirmation

Renewable Energy Operations Team
P.O Box 7000
300 Water Street
4th Floor, South Tower
Peterborough, ON K9J 8M5

April 2, 2012

NextEra Energy Canada
5500 Service Road, Suite 205
Burlington, ON L7L 6W6

RE: NHA Confirmation for Bornish Wind Energy Centre

Dear Tom Bird:

In accordance with the Ministry of the Environment's (MOE's) Renewable Energy Approvals (REA) Regulation (O.Reg.359/09), the Ministry of Natural Resources (MNR) has reviewed the natural heritage assessment and environmental impact study for the Bornish Wind Energy Centre located in Middlesex County, submitted by Nextera Energy Canada on April 1, 2012.

In accordance with Section 28(2) and 38(2)(b) of the REA regulation, MNR provides the following confirmations following review of the natural heritage assessment:

1. The MNR confirms that the determination of the existence of natural features and the boundaries of natural features was made using applicable evaluation criteria or procedures established or accepted by MNR.
2. The MNR confirms that the site investigation and records review were conducted using applicable evaluation criteria or procedures established or accepted by MNR, if no natural features were identified.
3. The MNR confirms that the evaluation of the significance or provincial significance of the natural features was conducted using applicable evaluation criteria or procedures established or accepted by MNR.
4. The MNR confirms that the project location is not in a provincial park or conservation reserve.
5. The MNR confirms that the environmental impact assessment report has been prepared in accordance with procedures established by the MNR.

In accordance with Appendix D of MNR's Natural Heritage Assessment Guide, a commitment has been made to complete pre-construction assessments of habitat use for candidate significant wildlife habitats. MNR has reviewed and confirmed the assessment methods and the range of mitigation options. Pending completion of the pre-construction assessments and determination of significance, the appropriate

mitigation is expected to be implemented, as committed to in the environmental impact study for the following candidate significant wildlife habitats:

- Bat Maternity Colony (features BMA-008, BMA-009, BMA-010, BMA-011, BMA-013, BMA-016, BMA-017)
- Amphibian Woodland Breeding (features AWO-001, AWO-002, AWO-003)
- Raptor Wintering Area (feature RWA-002)

In addition to the NHA, Environmental Effects Monitoring Plans that address post-construction monitoring and mitigation for birds and bats must be prepared and implemented. It is recommended that post-construction monitoring plans be prepared in accordance with MNR Guidelines and be reviewed by MNR in advance of submitting a REA application to MOE in order to minimize potential delays in determining if the application is complete.

This confirmation letter is valid for the project as proposed in the natural heritage assessment and environmental impact study, including those sections describing the Environmental Effects Monitoring Plan and Construction Plan Report. Should any changes be made to the proposed project that would alter the NHA, MNR may need to undertake additional review of the NHA.


Where specific commitments have been made by the applicant in the NHA with respect to project design, construction, rehabilitation, operation, mitigation, or monitoring, MNR expects that these commitments will be considered in MOE's Renewable Energy Approval decision and, if approved, be implemented by the applicant.

In accordance with S.12 (1) of the Renewable Energy Approvals Regulation, this letter must be included as part of your application submitted to the MOE for a Renewable Energy Approval.

Please be aware that your project may be subject to additional legislative approvals as outlined in the Ministry of Natural Resources' *Approvals and Permitting Requirements Document*. These approvals are required prior to the construction of your renewable energy facility.

If you wish to discuss any part of this confirmation or additional comments provided, please contact me at jim.beal@ontario.ca or 705-755-3203.

Sincerely,



Jim Beal
Renewable Energy Provincial Field Program Coordinator
Regional Operations Division
Ministry of Natural Resources

- cc. Mitch Wilson, District Manager, MNR Aylmer District
- cc. Amy Cameron, A/Renewable Energy Field Advisor, MNR REOT
- cc. Erin Cotnam, A/Renewable Energy Coordinator, MNR Southern Region
- cc. Narren Santos, Environmental Assessment and Approvals Branch, MOE

cc. Sandra Guido, Environmental Assessment and Approvals Branch, MOE
cc. Andrew Ryckman, Terrestrial and Wetland Biologist, NRSI

Appendix II
Bornish Wind Energy Centre layout submitted with NHA
