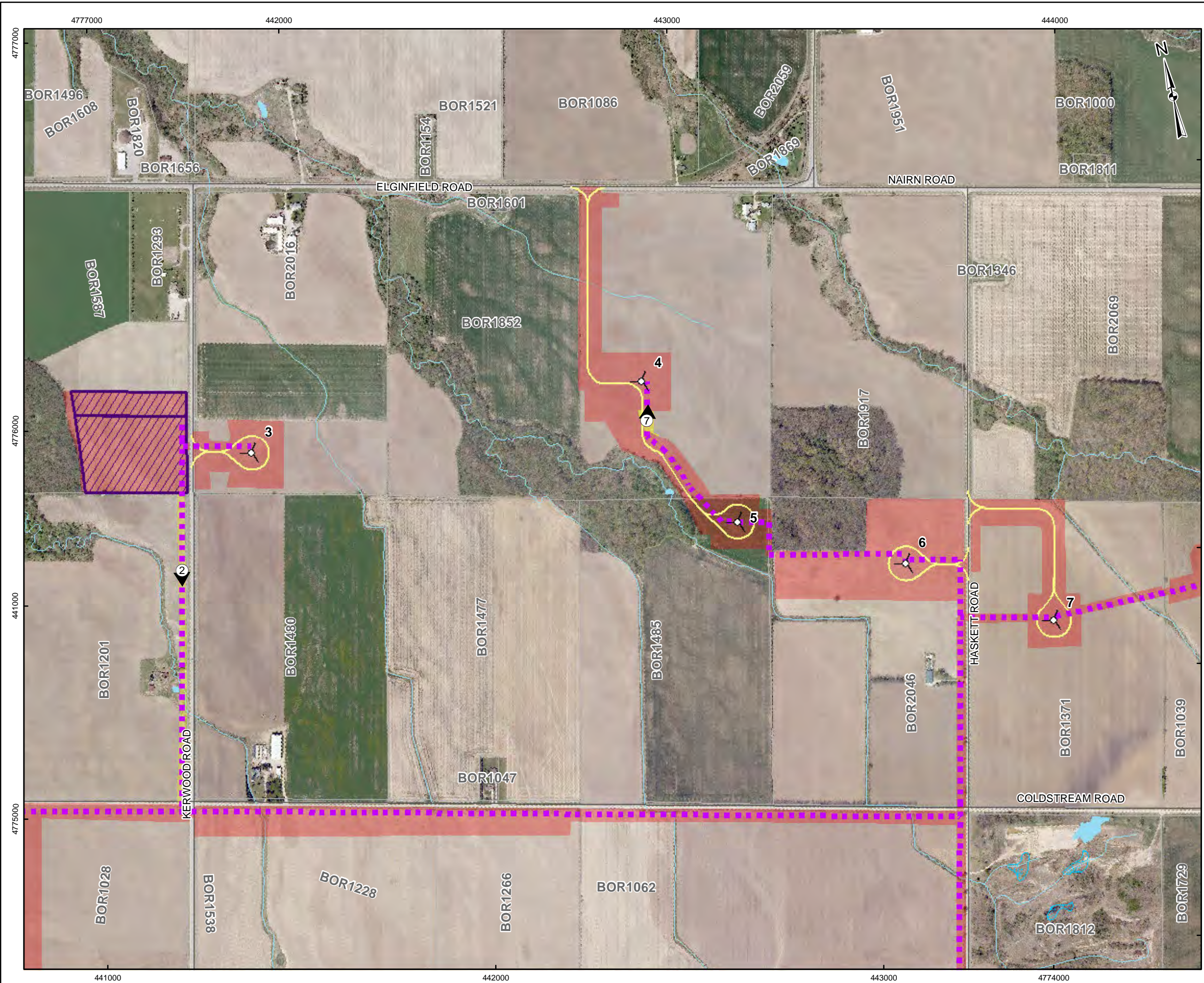


G:\Projects\2011\11-1154-0030_BornishWindFarm\GIS\MXDs\Reporting\Archaeology\Stage2SurveyMethods_June2012\Fig - 5-02 STAGE 2 SURVEY METHODS.mxd

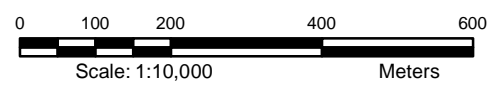


LEGEND

- Plate Location and Photographic Direction
- Turbine Layout
- MET Tower
- Collector Cable
- Access Road
- Roads
- Railways
- Utility Line
- Watercourse
- Stage 2 Pedestrian Survey at 5m Intervals (This Report)
- Previous Stage 2 Archaeological Assessment Conducted by Golder (reported under P218-097-2011 and P319-013-2012)
- Previous Stage 2 Archaeological Assessment Conducted by ASI 2009-2010
- Land Parcel
- Staging/Laydown Area
- Substation
- Waterbody
- Wetland

REFERENCE

Base Data - MNR NRVIS, obtained 2004, CANMAP v2006.4
 Produced by Golder Associates Ltd under licence from Ontario Ministry of Natural Resources, © Queens Printer 2008
 Projection: Transverse Mercator Datum: NAD 83 Coordinate System: UTM Zone 17N

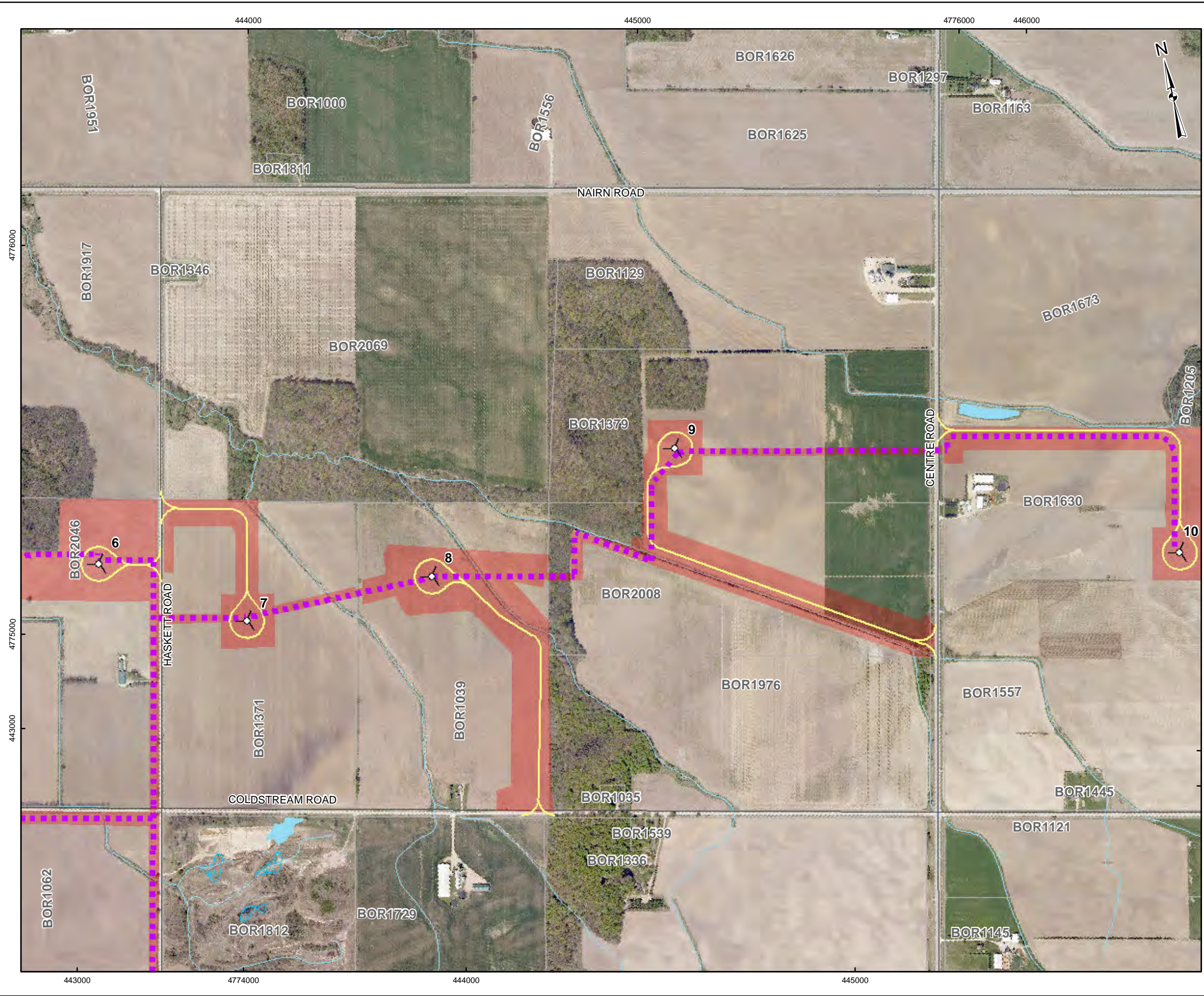


PROJECT	STAGE 2 ARCHAEOLOGICAL ASSESSMENT BORNISH WIND ENERGY CENTRE NORTH MIDDLESEX TOWNSHIP, ONTARIO		
TITLE	STAGE 2 SURVEY METHODS		
	PROJECT NO. 11-1154-0030	SCALE AS SHOWN	REV. 0.0
	DESIGN JMC 2 Feb. 2012		
	GIS BC 26 Jun. 2012		
	CHECK JM 26 Jun. 2012		
	REVIEW JM 26 Jun. 2012		



FIGURE: 5-02

G:\Projects\2011\11-1154-0030_BornishWindFarm\GIS\MapDocs\Reporting\Archaeology\Stage2SurveyMethods_June2012\Fig - 5-03 STAGE 2 SURVEY METHODS.mxd



LEGEND

- Plate Location and Photographic Direction
- Turbine Layout
- MET Tower
- Collector Cable
- Access Road
- Roads
- Railways
- Utility Line
- Watercourse
- Stage 2 Pedestrian Survey at 5m Intervals (This Report)
- Previous Stage 2 Archaeological Assessment Conducted by Golder (reported under P218-097-2011 and P319-013-2012)
- Previous Stage 2 Archaeological Assessment Conducted by ASI 2009-2010
- Land Parcel
- Staging/Laydown Area
- Substation
- Waterbody
- Wetland

REFERENCE

Base Data - MNR NRVIS, obtained 2004, CANMAP v2006.4
 Produced by Golder Associates Ltd under licence from
 Ontario Ministry of Natural Resources, © Queens Printer 2008
 Projection: Transverse Mercator Datum: NAD 83 Coordinate System: UTM Zone 17N

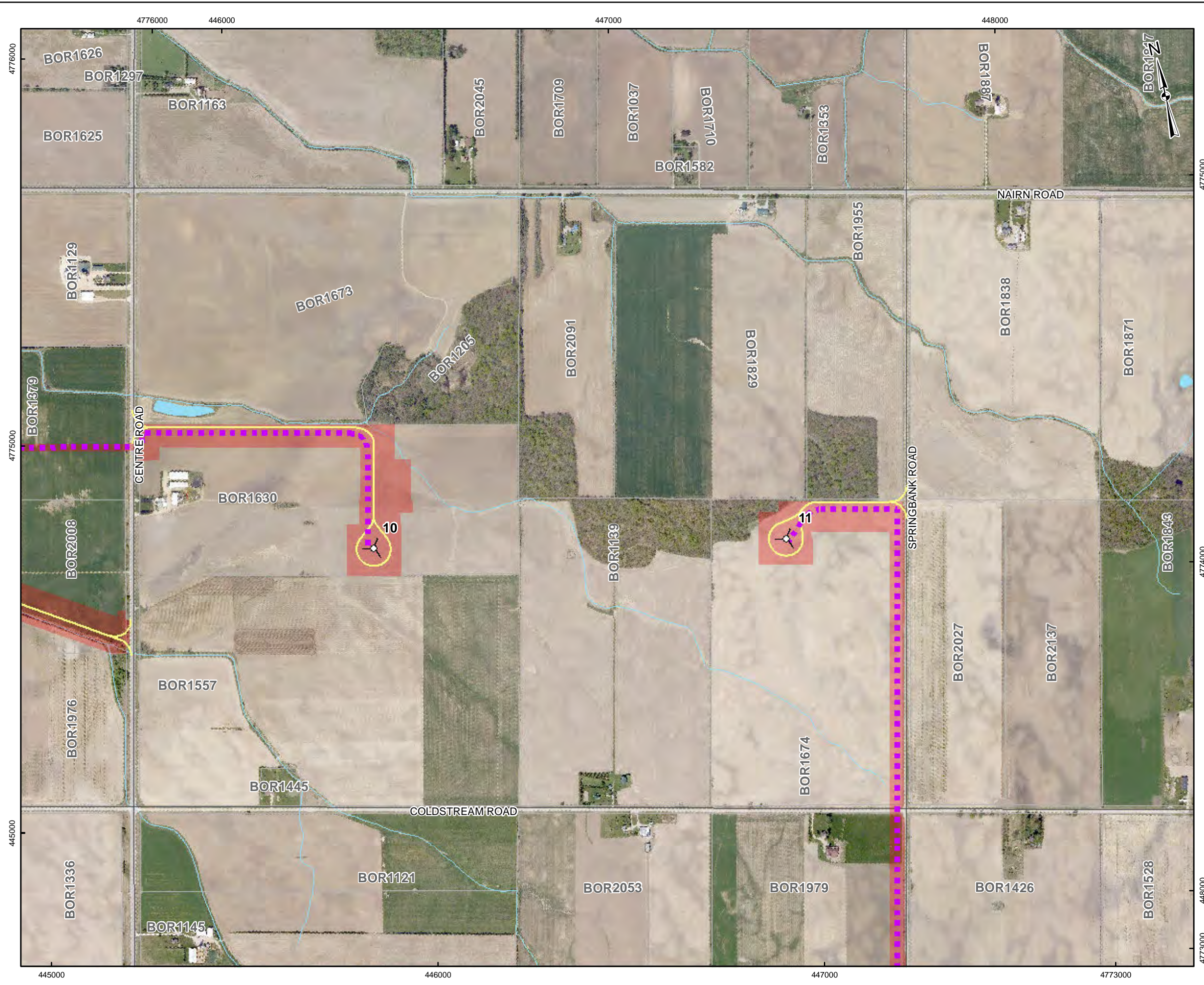
0 100 200 400 600
 Scale: 1:10,000 Meters

PROJECT	STAGE 2 ARCHAEOLOGICAL ASSESSMENT BORNISH WIND ENERGY CENTRE NORTH MIDDLESEX TOWNSHIP, ONTARIO		
TITLE	STAGE 2 SURVEY METHODS		
	PROJECT NO. 11-1154-0030	SCALE AS SHOWN	REV. 0.0
	DESIGN JMC	2 Feb. 2012	
	GIS BC	26 Jun. 2012	
	CHECK JM	26 Jun. 2012	
	REVIEW JM	26 Jun. 2012	

Golder Associates
Mississauga, Ontario

FIGURE: 5-03

G:\Projects\2011\11-1154-0030_BornishWindFarm\GIS\MXDs\Reporting\Archaeology\Stage2SurveyMethods\June2012\Fig - 5-04 STAGE 2 SURVEY METHODS.mxd

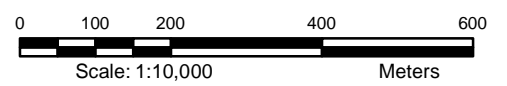


LEGEND

- Plate Location and Photographic Direction
- Turbine Layout
- MET Tower
- Collector Cable
- Access Road
- Roads
- Railways
- Utility Line
- Watercourse
- Stage 2 Pedestrian Survey at 5m Intervals (This Report)
- Previous Stage 2 Archaeological Assessment Conducted by Golder (reported under P218-097-2011 and P319-013-2012)
- Previous Stage 2 Archaeological Assessment Conducted by ASI 2009-2010
- Land Parcel
- Staging/Laydown Area
- Substation
- Waterbody
- Wetland

REFERENCE

Base Data - MNR NRVIS, obtained 2004, CANMAP v2006.4
 Produced by Golder Associates Ltd under licence from
 Ontario Ministry of Natural Resources, © Queens Printer 2008
 Projection: Transverse Mercator Datum: NAD 83 Coordinate System: UTM Zone 17N

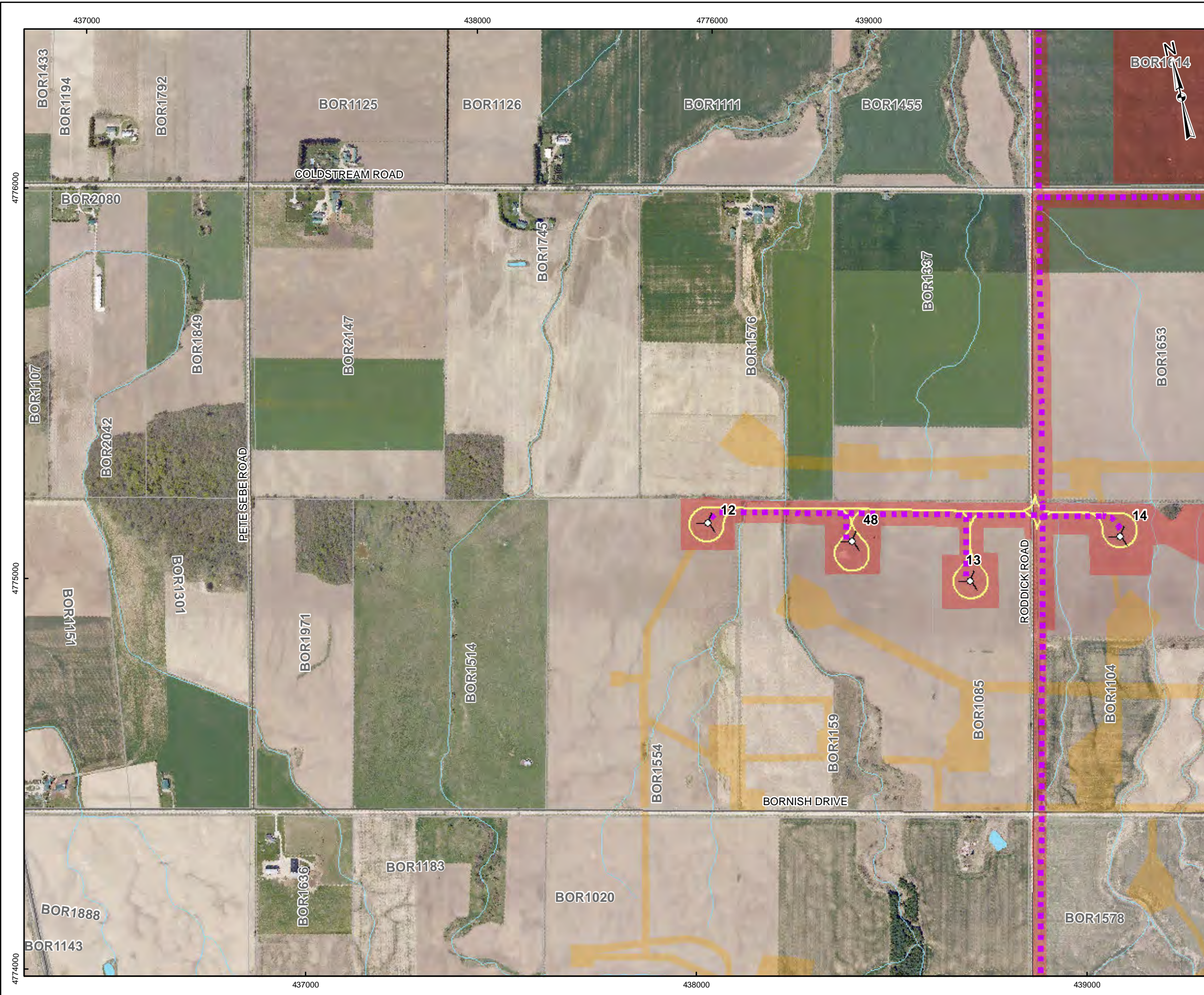


PROJECT	STAGE 2 ARCHAEOLOGICAL ASSESSMENT BORNISH WIND ENERGY CENTRE NORTH MIDDLESEX TOWNSHIP, ONTARIO		
TITLE	STAGE 2 SURVEY METHODS		
	PROJECT NO. 11-1154-0030	SCALE AS SHOWN	REV. 0.0
	DESIGN JMC 2 Feb. 2012		
	GIS BC 26 Jun. 2012		
	CHECK JM 26 Jun. 2012		
	REVIEW JM 26 Jun. 2012		



FIGURE: 5-04

G:\Projects\2011\11-1154-0030_BornishWindFarm\GIS\MXDs\Reporting\Archaeology\Stage2SurveyMethods_June2012\Fig - 5-05 STAGE 2 SURVEY METHODS.mxd

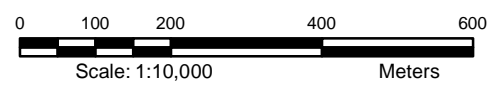


LEGEND

- Plate Location and Photographic Direction
- Turbine Layout
- MET Tower
- Collector Cable
- Access Road
- Roads
- Railways
- Utility Line
- Watercourse
- Stage 2 Pedestrian Survey at 5m Intervals (This Report)
- Previous Stage 2 Archaeological Assessment Conducted by Golder (reported under P218-097-2011 and P319-013-2012)
- Previous Stage 2 Archaeological Assessment Conducted by ASI 2009-2010
- Land Parcel
- Staging/Laydown Area
- Substation
- Waterbody
- Wetland

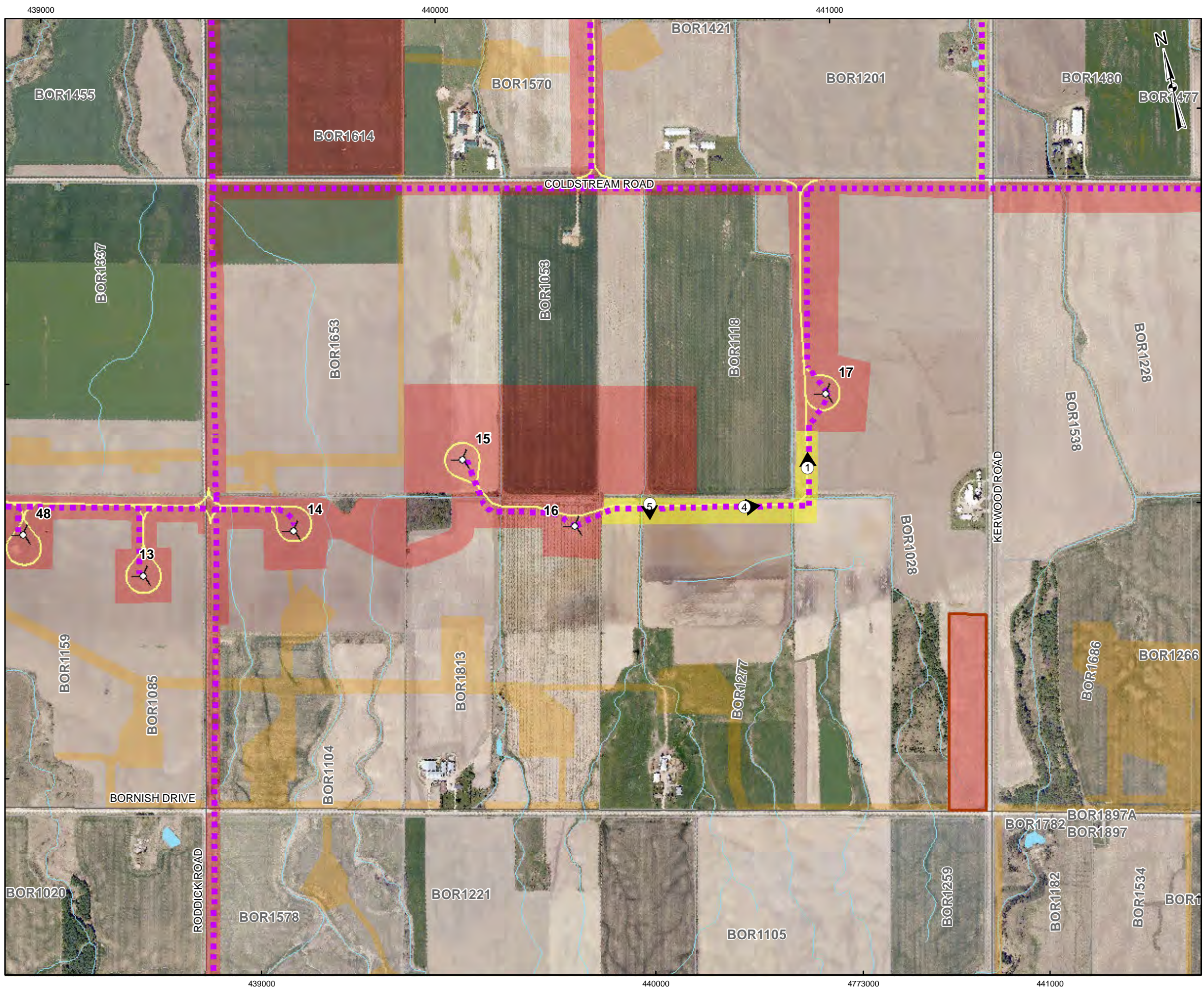
REFERENCE

Base Data - MNR NRVIS, obtained 2004, CANMAP v2006.4
 Produced by Golder Associates Ltd under licence from
 Ontario Ministry of Natural Resources, © Queens Printer 2008
 Projection: Transverse Mercator Datum: NAD 83 Coordinate System: UTM Zone 17N



PROJECT	STAGE 2 ARCHAEOLOGICAL ASSESSMENT BORNISH WIND ENERGY CENTRE NORTH MIDDLESEX TOWNSHIP, ONTARIO		
TITLE	STAGE 2 SURVEY METHODS		
	PROJECT NO. 11-1154-0030	SCALE AS SHOWN	REV. 0.0
DESIGN	JMC	2 Feb. 2012	FIGURE: 5-05
CHECK	JM	26 Jun. 2012	
REVIEW	JM	26 Jun. 2012	

G:\Projects\2011\11-1154-0030_BornishWindFarm\GIS\MXDs\Reporting\Archaeology\Stage2SurveyMethods_June2012\Fig - 5-06 STAGE 2 SURVEY METHODS.mxd

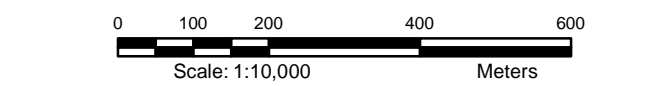


LEGEND

- ① Plate Location and Photographic Direction
- ⊙ Turbine Layout
- ⊙ MET Tower
- ⬢ Collector Cable
- Access Road
- Roads
- Railways
- Utility Line
- Watercourse
- Stage 2 Pedestrian Survey at 5m Intervals (This Report)
- Previous Stage 2 Archaeological Assessment Conducted by Golder (reported under P218-097-2011 and P319-013-2012)
- Previous Stage 2 Archaeological Assessment Conducted by ASI 2009-2010
- Land Parcel
- Staging/Laydown Area
- Substation
- Waterbody
- Wetland

REFERENCE

Base Data - MNR NRVIS, obtained 2004, CANMAP v2006.4
 Produced by Golder Associates Ltd under licence from
 Ontario Ministry of Natural Resources, © Queens Printer 2008
 Projection: Transverse Mercator Datum: NAD 83 Coordinate System: UTM Zone 17N

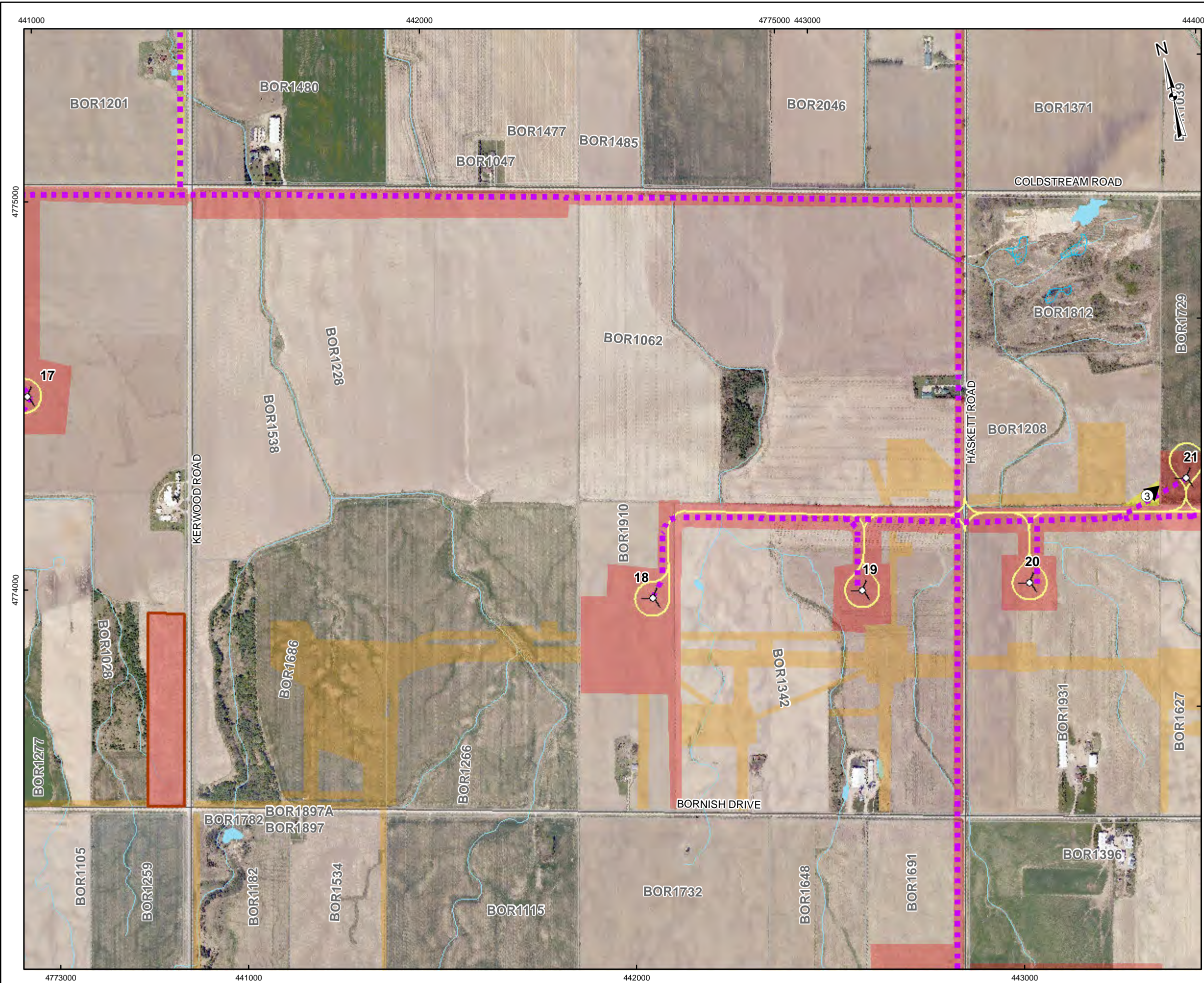


PROJECT	STAGE 2 ARCHAEOLOGICAL ASSESSMENT BORNISH WIND ENERGY CENTRE NORTH MIDDLESEX TOWNSHIP, ONTARIO		
TITLE	STAGE 2 SURVEY METHODS		
	PROJECT NO. 11-1154-0030	SCALE AS SHOWN	REV. 0.0
	DESIGN JMC	2 Feb. 2012	
	GIS BC	26 Jun. 2012	
	CHECK JM	26 Jun. 2012	
	REVIEW JM	26 Jun. 2012	



FIGURE: 5-06

G:\Projects\2011\11-1154-0030_BornishWindFarm\GIS\MXDs\Reporting\Archaeology\Stage2SurveyMethods_June2012\Fig - 5-07 STAGE 2 SURVEY METHODS.mxd

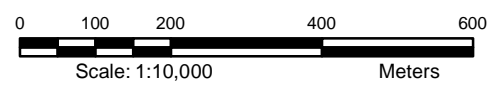


LEGEND

- Plate Location and Photographic Direction
- Turbine Layout
- MET Tower
- Collector Cable
- Access Road
- Roads
- Railways
- Utility Line
- Watercourse
- Stage 2 Pedestrian Survey at 5m Intervals (This Report)
- Previous Stage 2 Archaeological Assessment Conducted by Golder (reported under P218-097-2011 and P319-013-2012)
- Previous Stage 2 Archaeological Assessment Conducted by ASI 2009-2010
- Land Parcel
- Staging/Laydown Area
- Substation
- Waterbody
- Wetland

REFERENCE

Base Data - MNR NRVIS, obtained 2004, CANMAP v2006.4
 Produced by Golder Associates Ltd under licence from
 Ontario Ministry of Natural Resources, © Queens Printer 2008
 Projection: Transverse Mercator Datum: NAD 83 Coordinate System: UTM Zone 17N

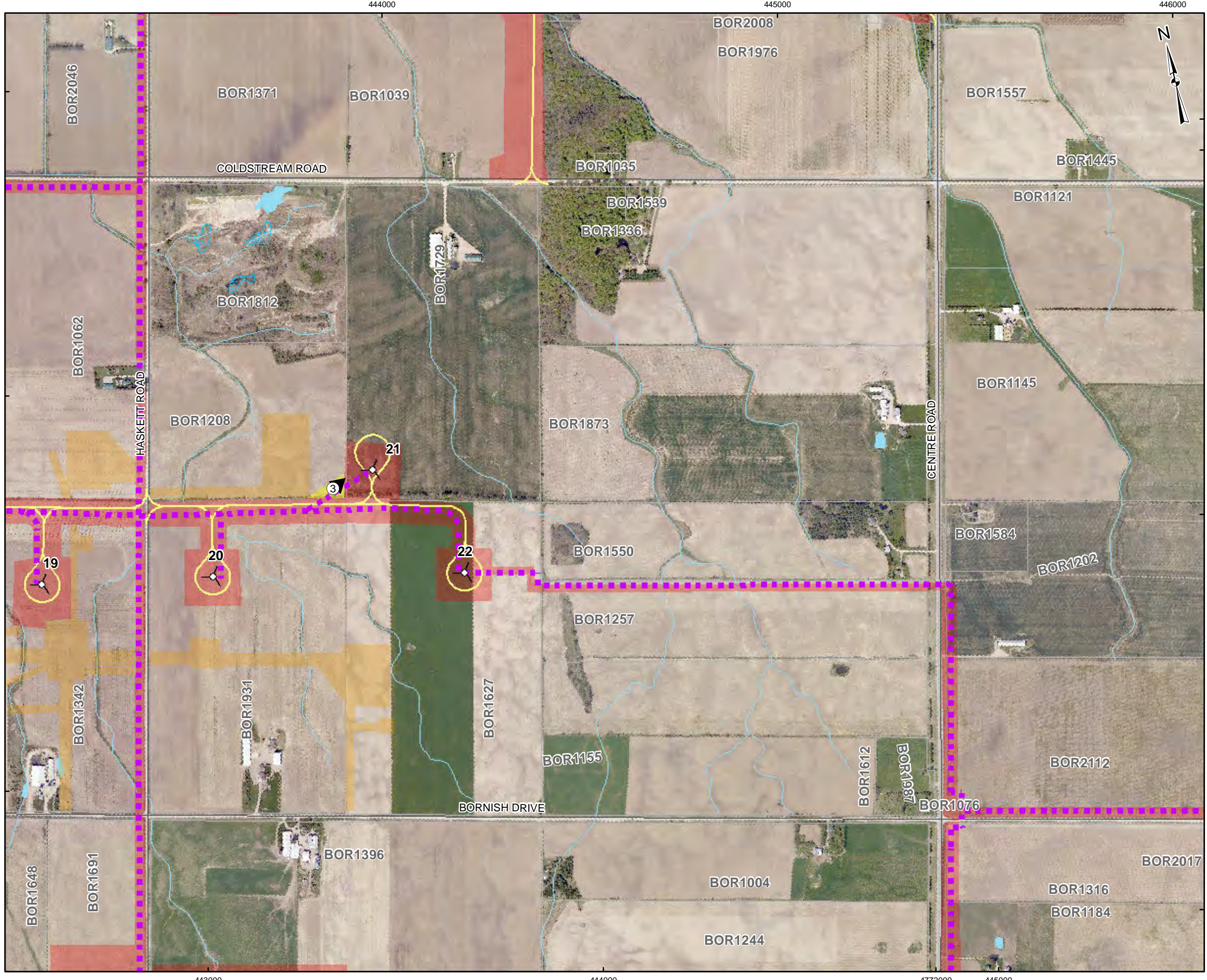


PROJECT	STAGE 2 ARCHAEOLOGICAL ASSESSMENT BORNISH WIND ENERGY CENTRE NORTH MIDDLESEX TOWNSHIP, ONTARIO		
TITLE	STAGE 2 SURVEY METHODS		
	PROJECT NO. 11-1154-0030	SCALE AS SHOWN	REV. 0.0
	DESIGN JMC 2 Feb. 2012		
	GIS BC 26 Jun. 2012		
	CHECK JM 26 Jun. 2012		
	REVIEW JM 26 Jun. 2012		



FIGURE: 5-07

G:\Projects\2011\11-1154-0030_BornishWindFarm\GIS\MXDs\Reporting\Archaeology\Stage2SurveyMethods\June2012\Fig - 5-08 STAGE 2 SURVEY METHODS.mxd

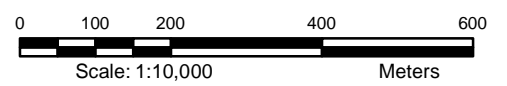


LEGEND

- Plate Location and Photographic Direction
- Turbine Layout
- MET Tower
- Collector Cable
- Access Road
- Roads
- Railways
- Utility Line
- Watercourse
- Stage 2 Pedestrian Survey at 5m Intervals (This Report)
- Previous Stage 2 Archaeological Assessment Conducted by Golder (reported under P218-097-2011 and P319-013-2012)
- Previous Stage 2 Archaeological Assessment Conducted by ASI 2009-2010
- Land Parcel
- Staging/Laydown Area
- Substation
- Waterbody
- Wetland

REFERENCE

Base Data - MNR NRVIS, obtained 2004, CANMAP v2006.4
 Produced by Golder Associates Ltd under licence from
 Ontario Ministry of Natural Resources, © Queens Printer 2008
 Projection: Transverse Mercator Datum: NAD 83 Coordinate System: UTM Zone 17N

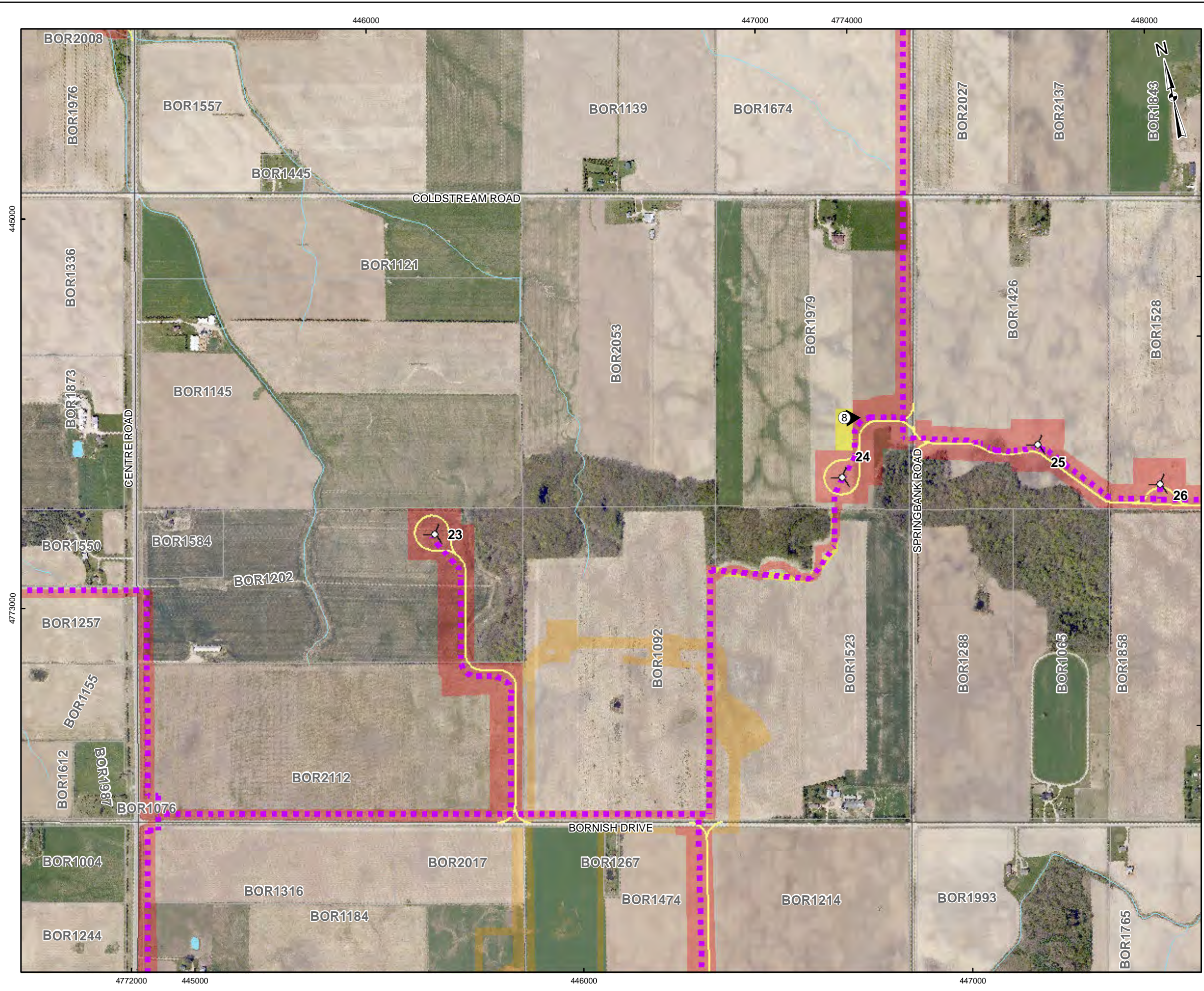


PROJECT	STAGE 2 ARCHAEOLOGICAL ASSESSMENT BORNISH WIND ENERGY CENTRE NORTH MIDDLESEX TOWNSHIP, ONTARIO		
TITLE	STAGE 2 SURVEY METHODS		
	PROJECT NO. 11-1154-0030	SCALE AS SHOWN	REV. 0.0
	DESIGN JMC 2 Feb. 2012		
	GIS BC 26 Jun. 2012		
	CHECK JM 26 Jun. 2012		
	REVIEW JM 26 Jun. 2012		



FIGURE: 5-08

G:\Projects\201111-1154-0030_BornishWindFarm\GIS\MXDs\Reporting\Archaeology\Stage2SurveyMethods_June2012\Fig - 5-09 STAGE 2 SURVEY METHODS.mxd

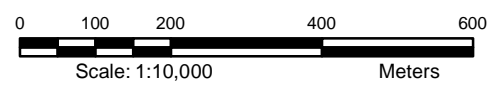


LEGEND

- Plate Location and Photographic Direction
- Turbine Layout
- MET Tower
- Collector Cable
- Access Road
- Roads
- Railways
- Utility Line
- Watercourse
- Stage 2 Pedestrian Survey at 5m Intervals (This Report)
- Previous Stage 2 Archaeological Assessment Conducted by Golder (reported under P218-097-2011 and P319-013-2012)
- Previous Stage 2 Archaeological Assessment Conducted by ASI 2009-2010
- Land Parcel
- Staging/Laydown Area
- Substation
- Waterbody
- Wetland

REFERENCE

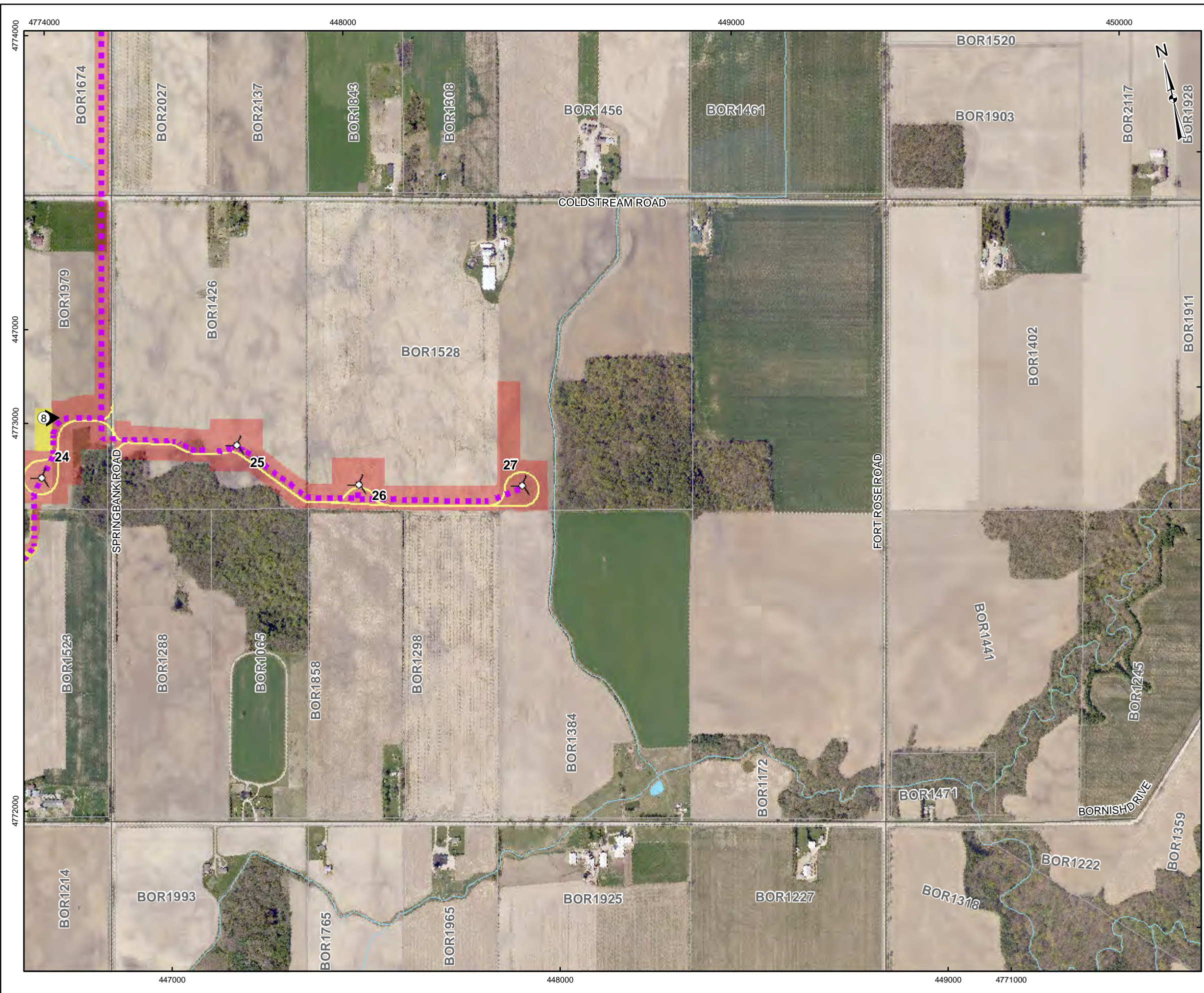
Base Data - MNR NRVIS, obtained 2004, CANMAP v2006.4
 Produced by Golder Associates Ltd under licence from
 Ontario Ministry of Natural Resources, © Queens Printer 2008
 Projection: Transverse Mercator Datum: NAD 83 Coordinate System: UTM Zone 17N



PROJECT	STAGE 2 ARCHAEOLOGICAL ASSESSMENT BORNISH WIND ENERGY CENTRE NORTH MIDDLESEX TOWNSHIP, ONTARIO		
TITLE	STAGE 2 SURVEY METHODS		
	PROJECT NO. 11-1154-0030	SCALE AS SHOWN	REV. 0.0
	DESIGN JMC 2 Feb. 2012		
	GIS BC 26 Jun. 2012		
	CHECK JM 26 Jun. 2012		
	REVIEW JM 26 Jun. 2012		



FIGURE: 5-09



LEGEND

- Plate Location and Photographic Direction
- Turbine Layout
- MET Tower
- Collector Cable
- Access Road
- Roads
- Railways
- Utility Line
- Watercourse
- Stage 2 Pedestrian Survey at 5m Intervals (This Report)
- Previous Stage 2 Archaeological Assessment Conducted by Golder (reported under P218-097-2011 and P319-013-2012)
- Previous Stage 2 Archaeological Assessment Conducted by ASI 2009-2010
- Land Parcel
- Staging/Laydown Area
- Substation
- Waterbody
- Wetland

REFERENCE

Base Data - MNR NRVIS, obtained 2004, CANMAP v2006.4
 Produced by Golder Associates Ltd under licence from
 Ontario Ministry of Natural Resources, © Queens Printer 2008
 Projection: Transverse Mercator Datum: NAD 83 Coordinate System: UTM Zone 17N

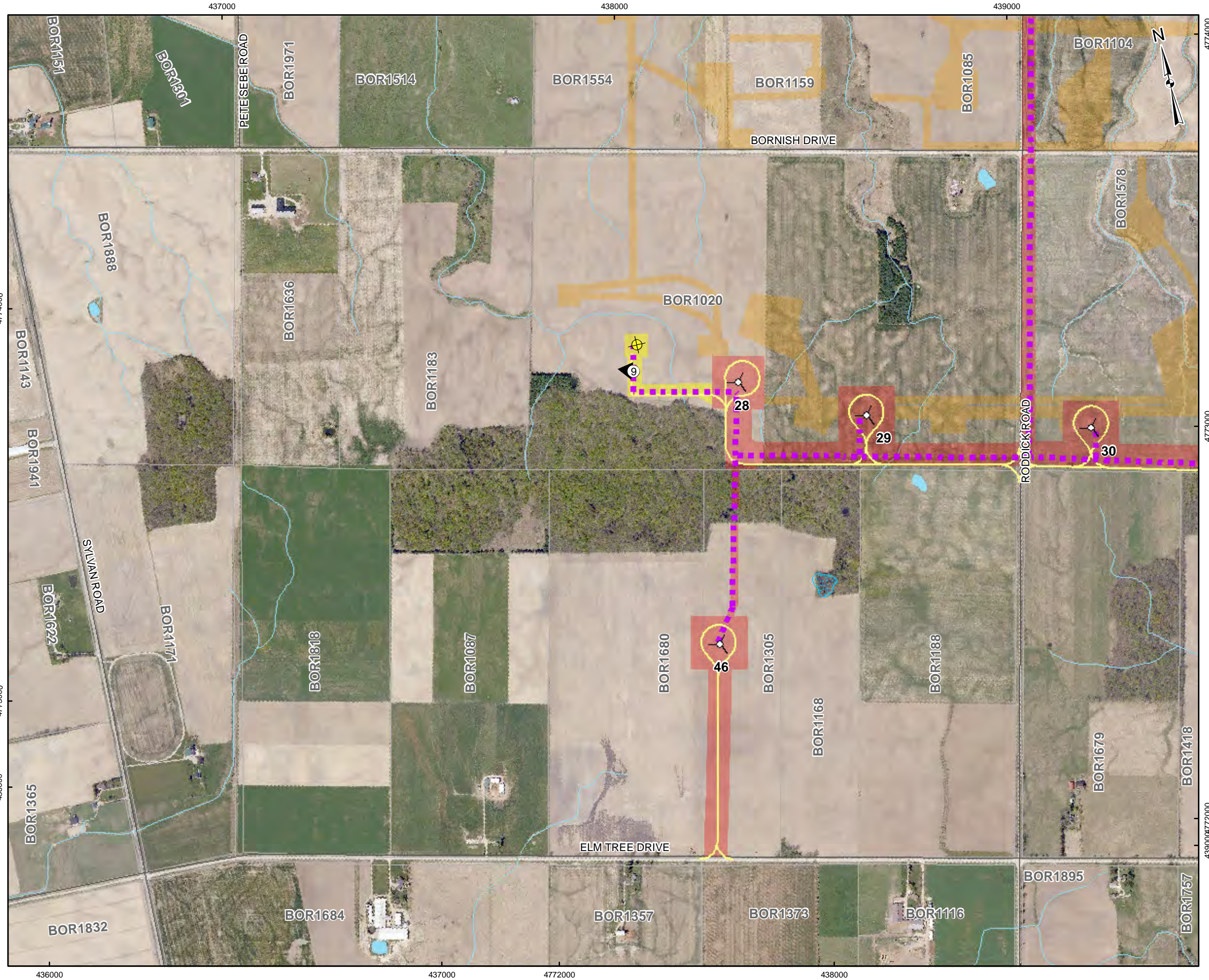
0 100 200 400 600
 Scale: 1:10,000 Meters

PROJECT	STAGE 2 ARCHAEOLOGICAL ASSESSMENT BORNISH WIND ENERGY CENTRE NORTH MIDDLESEX TOWNSHIP, ONTARIO		
TITLE	STAGE 2 SURVEY METHODS		
	PROJECT NO. 11-1154-0030	SCALE AS SHOWN	REV. 0.0
	DESIGN JMC	2 Feb. 2012	
	GIS BC	26 Jun. 2012	
	CHECK JM	26 Jun. 2012	
	REVIEW JM	26 Jun. 2012	



FIGURE: 5-10

G:\Projects\2011\11-1154-0030_BornishWindFarm\GIS\MXDs\Reporting\Archaeology\Stage2SurveyMethods\June2012\Fig - 5-11 STAGE 2 SURVEY METHODS.mxd

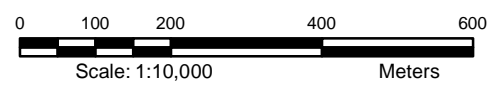


LEGEND

- Plate Location and Photographic Direction
- Turbine Layout
- MET Tower
- Collector Cable
- Access Road
- Roads
- Railways
- Utility Line
- Watercourse
- Stage 2 Pedestrian Survey at 5m Intervals (This Report)
- Previous Stage 2 Archaeological Assessment Conducted by Golder (reported under P218-097-2011 and P319-013-2012)
- Previous Stage 2 Archaeological Assessment Conducted by ASI 2009-2010
- Land Parcel
- Staging/Laydown Area
- Substation
- Waterbody
- Wetland

REFERENCE

Base Data - MNR NRVIS, obtained 2004, CANMAP v2006.4
 Produced by Golder Associates Ltd under licence from Ontario Ministry of Natural Resources, © Queens Printer 2008
 Projection: Transverse Mercator Datum: NAD 83 Coordinate System: UTM Zone 17N

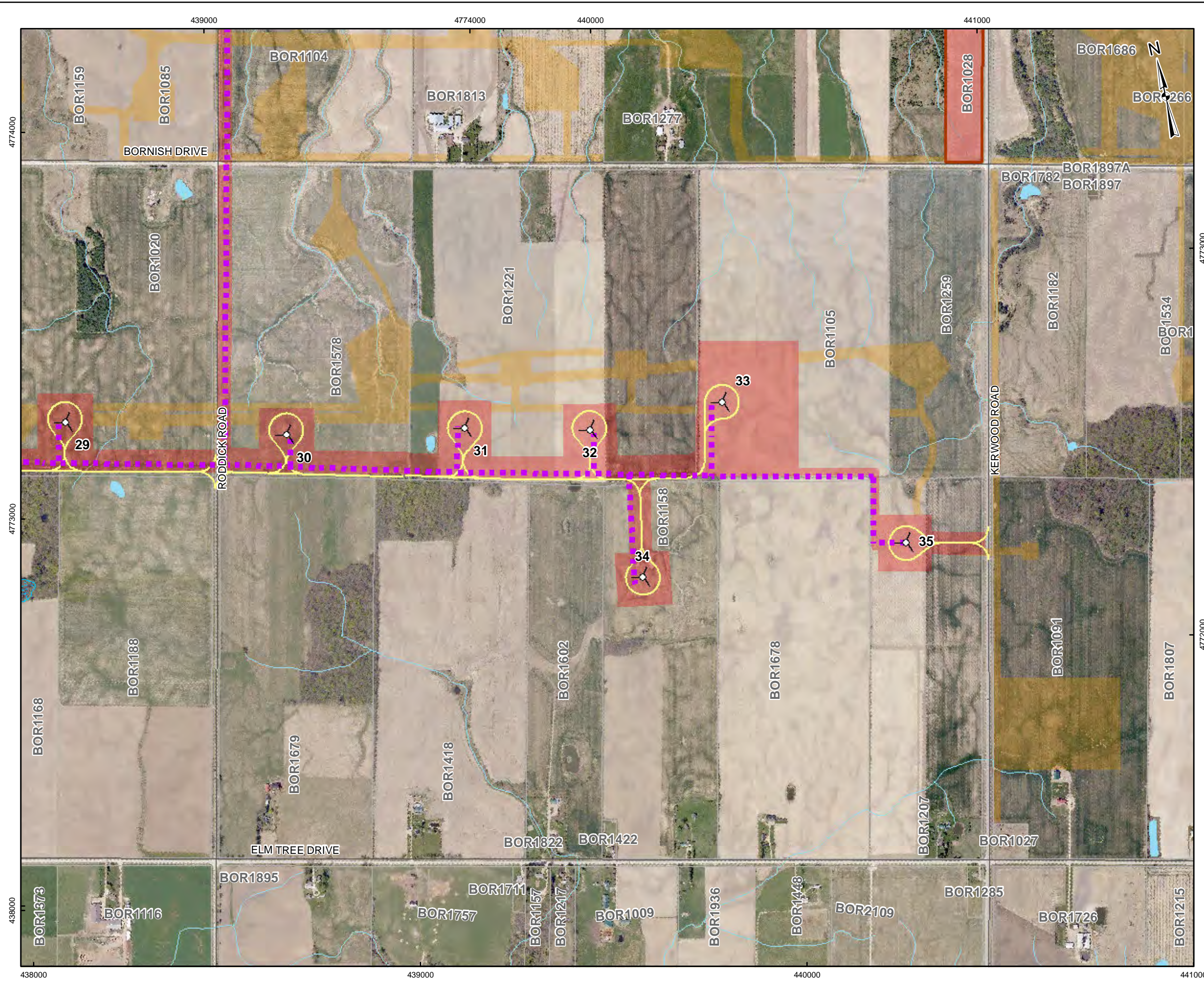


PROJECT	STAGE 2 ARCHAEOLOGICAL ASSESSMENT BORNISH WIND ENERGY CENTRE NORTH MIDDLESEX TOWNSHIP, ONTARIO		
TITLE	STAGE 2 SURVEY METHODS		
	PROJECT NO. 11-1154-0030	SCALE AS SHOWN	REV. 0.0
	DESIGN JMC 2 Feb. 2012		
	GIS BC 26 Jun. 2012		
	CHECK JM 26 Jun. 2012		
	REVIEW JM 26 Jun. 2012		



FIGURE: 5-11

G:\Projects\2011\11-1154-0030_BornishWindFarm\GIS\MXDs\Reporting\Archaeology\Stage2SurveyMethods\June2012\Fig - 5-12 STAGE 2 SURVEY METHODS.mxd

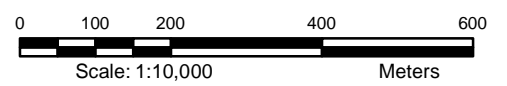


LEGEND

- Plate Location and Photographic Direction
- Turbine Layout
- MET Tower
- Collector Cable
- Access Road
- Roads
- Railways
- Utility Line
- Watercourse
- Stage 2 Pedestrian Survey at 5m Intervals (This Report)
- Previous Stage 2 Archaeological Assessment Conducted by Golder (reported under P218-097-2011 and P319-013-2012)
- Previous Stage 2 Archaeological Assessment Conducted by ASI 2009-2010
- Land Parcel
- Staging/Laydown Area
- Substation
- Waterbody
- Wetland

REFERENCE

Base Data - MNR NRVIS, obtained 2004, CANMAP v2006.4
 Produced by Golder Associates Ltd under licence from
 Ontario Ministry of Natural Resources, © Queens Printer 2008
 Projection: Transverse Mercator Datum: NAD 83 Coordinate System: UTM Zone 17N

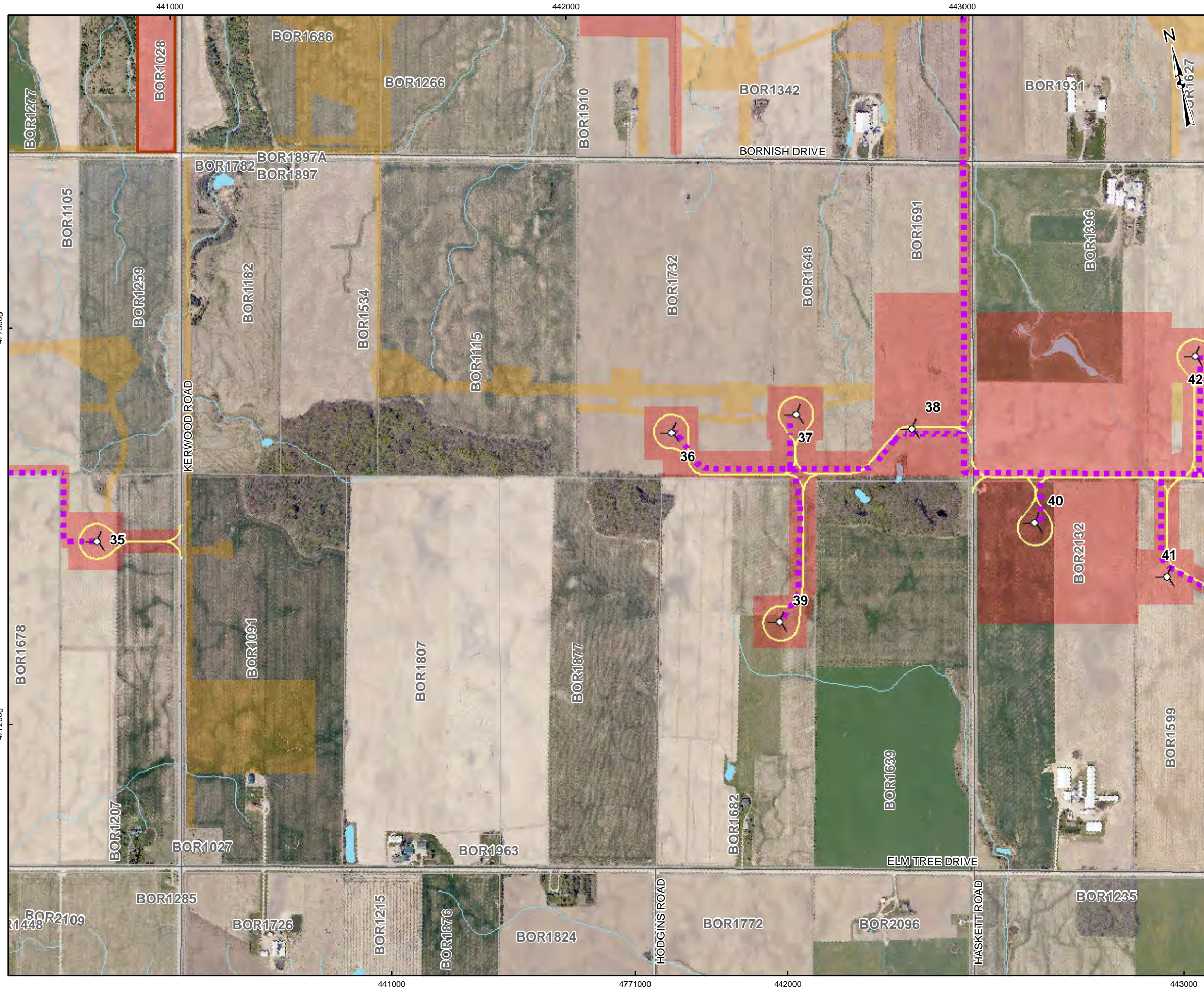


PROJECT	STAGE 2 ARCHAEOLOGICAL ASSESSMENT BORNISH WIND ENERGY CENTRE NORTH MIDDLESEX TOWNSHIP, ONTARIO		
TITLE	STAGE 2 SURVEY METHODS		
	PROJECT NO. 11-1154-0030	SCALE AS SHOWN	REV. 0.0
	DESIGN JMC 2 Feb. 2012		
	GIS BC 26 Jun. 2012		
	CHECK JM 26 Jun. 2012		
	REVIEW JM 26 Jun. 2012		



FIGURE: 5-12

G:\Projects\2011\11-1154-0030_BornishWindFarm\GIS\MXDs\Reporting\Archaeology\Stage2SurveyMethods_June2012\Fig - 5-13 STAGE 2 SURVEY METHODS.mxd

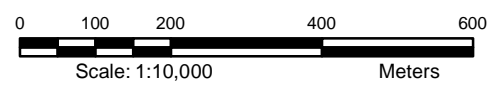


LEGEND

- Plate Location and Photographic Direction
- Turbine Layout
- MET Tower
- Collector Cable
- Access Road
- Roads
- Railways
- Utility Line
- Watercourse
- Stage 2 Pedestrian Survey at 5m Intervals (This Report)
- Previous Stage 2 Archaeological Assessment Conducted by Golder (reported under P218-097-2011 and P319-013-2012)
- Previous Stage 2 Archaeological Assessment Conducted by ASI 2009-2010
- Land Parcel
- Staging/Laydown Area
- Substation
- Waterbody
- Wetland

REFERENCE

Base Data - MNR NRVIS, obtained 2004, CANMAP v2006.4
 Produced by Golder Associates Ltd under licence from
 Ontario Ministry of Natural Resources, © Queens Printer 2008
 Projection: Transverse Mercator Datum: NAD 83 Coordinate System: UTM Zone 17N



PROJECT	STAGE 2 ARCHAEOLOGICAL ASSESSMENT BORNISH WIND ENERGY CENTRE NORTH MIDDLESEX TOWNSHIP, ONTARIO		
TITLE	STAGE 2 SURVEY METHODS		
 Mississauga, Ontario	PROJECT NO.	11-1154-0030	SCALE AS SHOWN
	DESIGN	JMC 2 Feb. 2012	REV. 0.0
	GIS	BC 26 Jun. 2012	FIGURE: 5-13
	CHECK	JM 26 Jun. 2012	
REVIEW	JM 26 Jun. 2012		