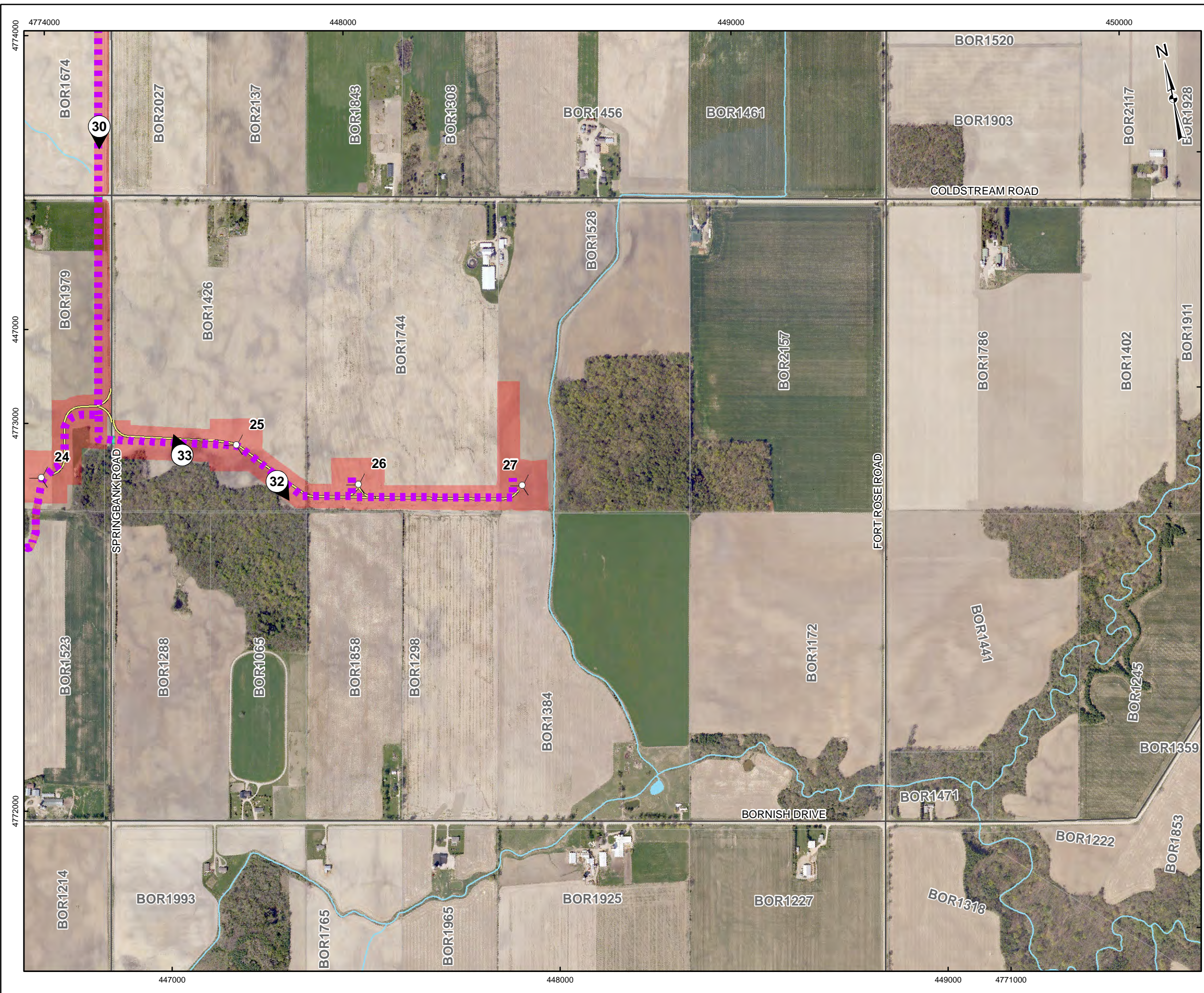


G:\Projects\2011\11-1154-0030\_BornishWindFarm\GIS\XDR\Reporting\Archaeology\Stage2SurveyMethods\Fig - 5-10 STAGE 2 SURVEY METHODS.mxd

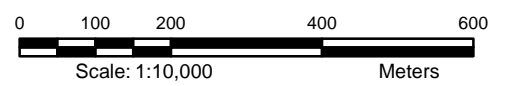


**LEGEND**

- 1 Photographic Direction
- Turbine Layout
- Collector Cable
- Access Road
- Roads
- Railways
- Utility Line
- Watercourse
- Stage 2 Pedestrian Survey at 5m Intervals
- Stage 2 Test Pit Survey at 5m Intervals
- Wet Area - Not Assessed
- Stage 2 Archaeological Assessment Conducted by ASI 2009-2010
- Disturbed Area - Not Assessed
- Land Parcel
- Staging/Laydown Area
- Substation
- Waterbody
- Wetland

**REFERENCE**

Base Data - MNR NRVIS, obtained 2004, CANMAP v2006.4  
 Produced by Golder Associates Ltd under licence from  
 Ontario Ministry of Natural Resources, © Queens Printer 2008  
 Projection: Transverse Mercator Datum: NAD 83 Coordinate System: UTM Zone 17N



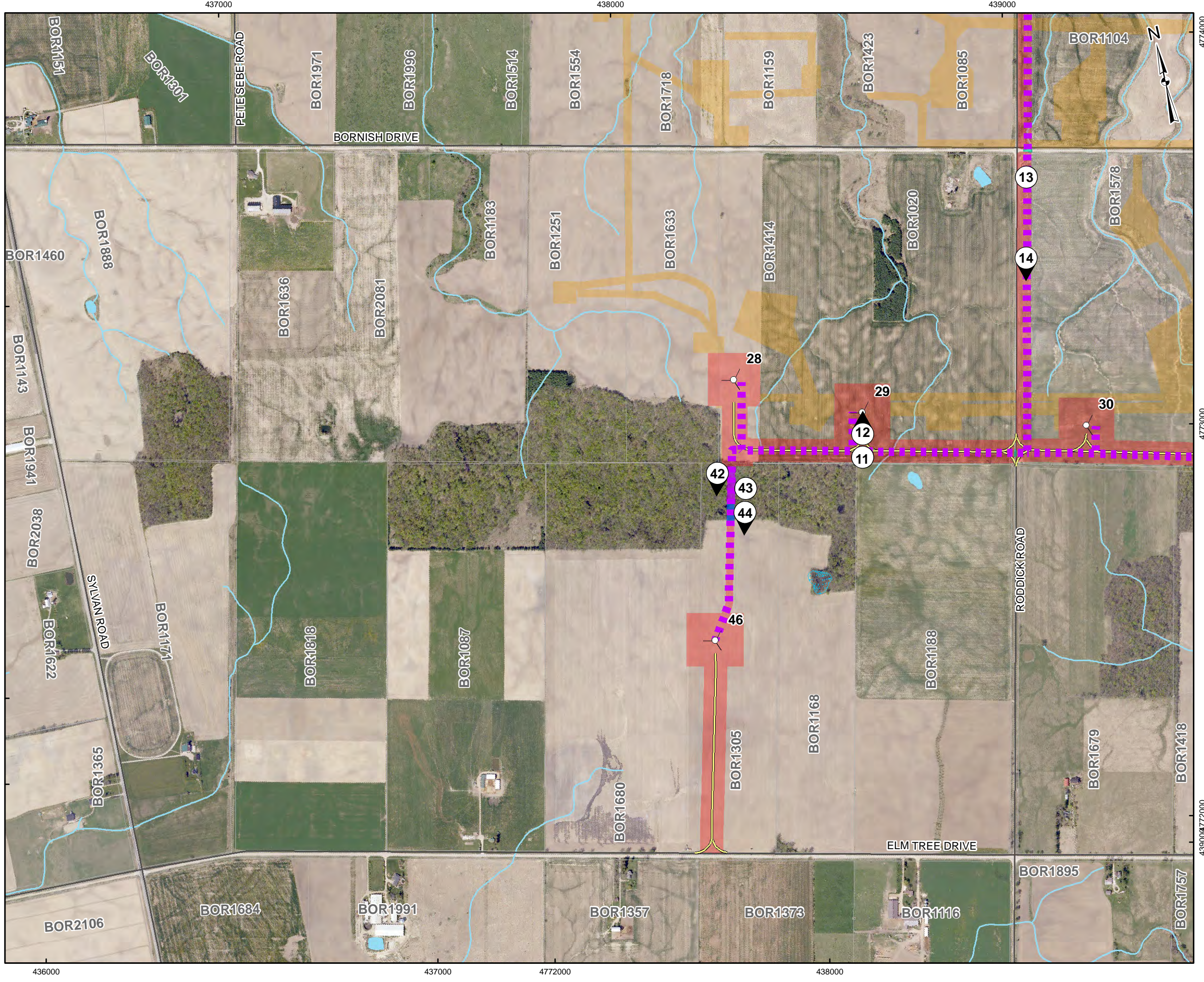
PROJECT	STAGE 2 ARCHAEOLOGICAL ASSESSMENT BORNISH WIND ENERGY CENTRE NORTH MIDDLESEX TOWNSHIP, ONTARIO		
TITLE	STAGE 2 SURVEY METHODS		
	PROJECT NO. 11-1154-0030	SCALE AS SHOWN	REV. 0.0
	DESIGN JMC	2 Feb. 2012	
	GIS JMC	7 Feb. 2012	
	CHECK JM	7 Feb. 2012	
	REVIEW JM	7 Feb. 2012	



FIGURE: 5-10



G:\Projects\2011\11-1154-0030\_BornishWindFarm\GIS\XDS\Reporting\Archaeology\Stage2SurveyMethods\Fig - 5-11 STAGE 2 SURVEY METHODS.mxd

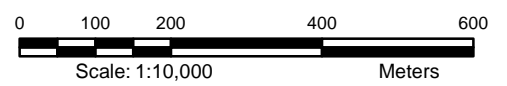


**LEGEND**

- 1 Photographic Direction
- Turbine Layout
- Collector Cable
- Access Road
- Roads
- Railways
- Utility Line
- Watercourse
- Stage 2 Pedestrian Survey at 5m Intervals
- Stage 2 Test Pit Survey at 5m Intervals
- Wet Area - Not Assessed
- Stage 2 Archaeological Assessment Conducted by ASI 2009-2010
- Disturbed Area - Not Assessed
- Land Parcel
- Staging/Laydown Area
- Substation
- Waterbody
- Wetland

**REFERENCE**

Base Data - MNR NRVIS, obtained 2004, CANMAP v2006.4  
 Produced by Golder Associates Ltd under licence from  
 Ontario Ministry of Natural Resources, © Queens Printer 2008  
 Projection: Transverse Mercator Datum: NAD 83 Coordinate System: UTM Zone 17N



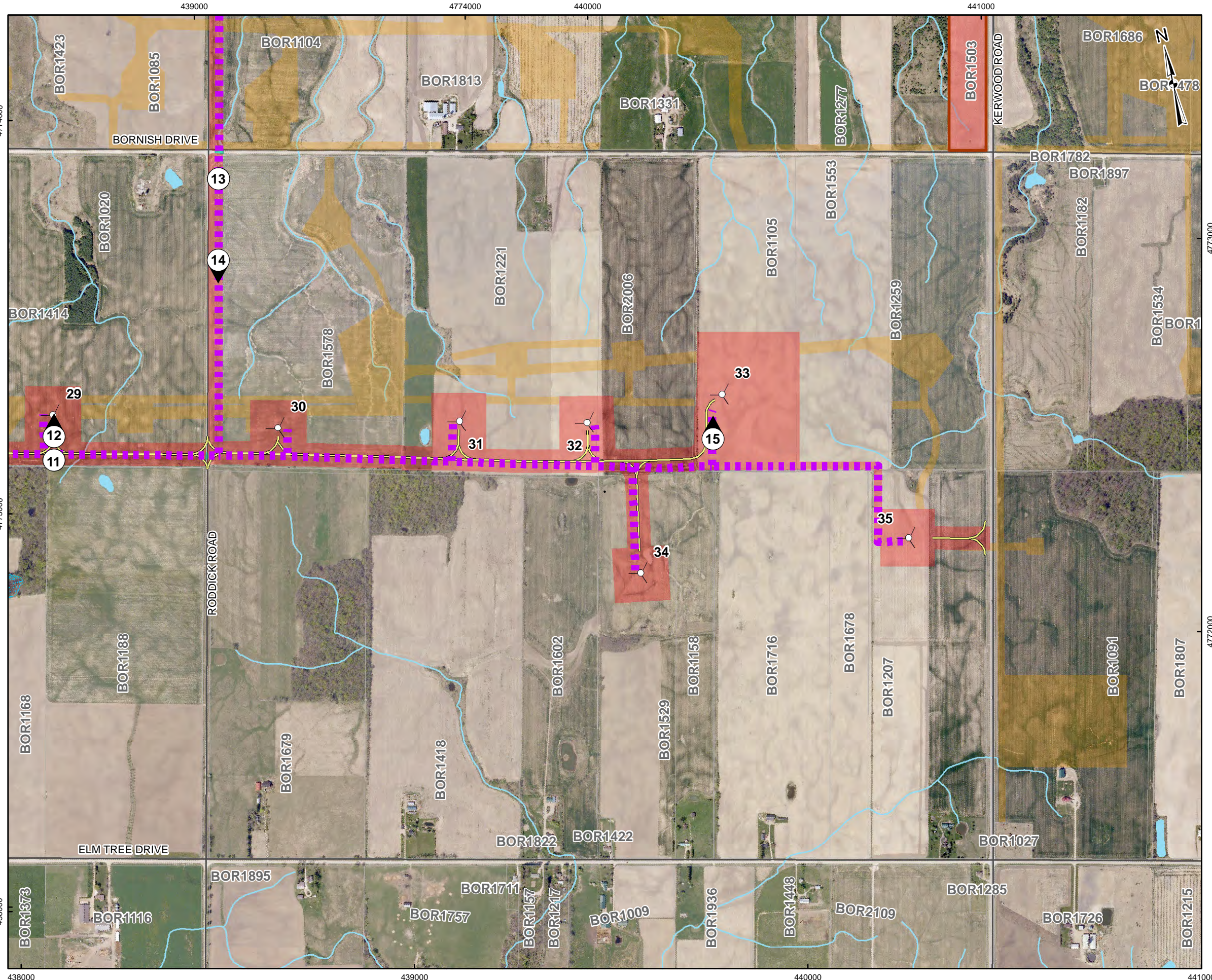
PROJECT STAGE 2 ARCHAEOLOGICAL ASSESSMENT  
 BORNISH WIND ENERGY CENTRE  
 NORTH MIDDLESEX TOWNSHIP, ONTARIO

TITLE  
 STAGE 2 SURVEY METHODS

	PROJECT NO. 11-1154-0030	SCALE AS SHOWN	REV. 0.0
	DESIGN JMC	2 Feb. 2012	
	GIS JMC	7 Feb. 2012	
	CHECK JM	7 Feb. 2012	
	REVIEW JM	7 Feb. 2012	

FIGURE: 5-11



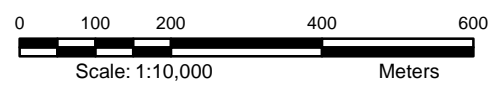


**LEGEND**

- Photographic Direction
- Turbine Layout
- Collector Cable
- Access Road
- Roads
- Railways
- Utility Line
- Watercourse
- Stage 2 Pedestrian Survey at 5m Intervals
- Stage 2 Test Pit Survey at 5m Intervals
- Wet Area - Not Assessed
- Stage 2 Archaeological Assessment Conducted by ASI 2009-2010
- Disturbed Area - Not Assessed
- Land Parcel
- Staging/Laydown Area
- Substation
- Waterbody
- Wetland

**REFERENCE**

Base Data - MNR NRVIS, obtained 2004, CANMAP v2006.4  
 Produced by Golder Associates Ltd under licence from  
 Ontario Ministry of Natural Resources, © Queens Printer 2008  
 Projection: Transverse Mercator Datum: NAD 83 Coordinate System: UTM Zone 17N



PROJECT	STAGE 2 ARCHAEOLOGICAL ASSESSMENT BORNISH WIND ENERGY CENTRE NORTH MIDDLESEX TOWNSHIP, ONTARIO		
TITLE	STAGE 2 SURVEY METHODS		
	PROJECT NO. 11-1154-0030	SCALE AS SHOWN	REV. 0.0
	DESIGN JMC	2 Feb. 2012	
	GIS JMC	7 Feb. 2012	
	CHECK JM	7 Feb. 2012	
	REVIEW JM	7 Feb. 2012	



FIGURE: 5-12

