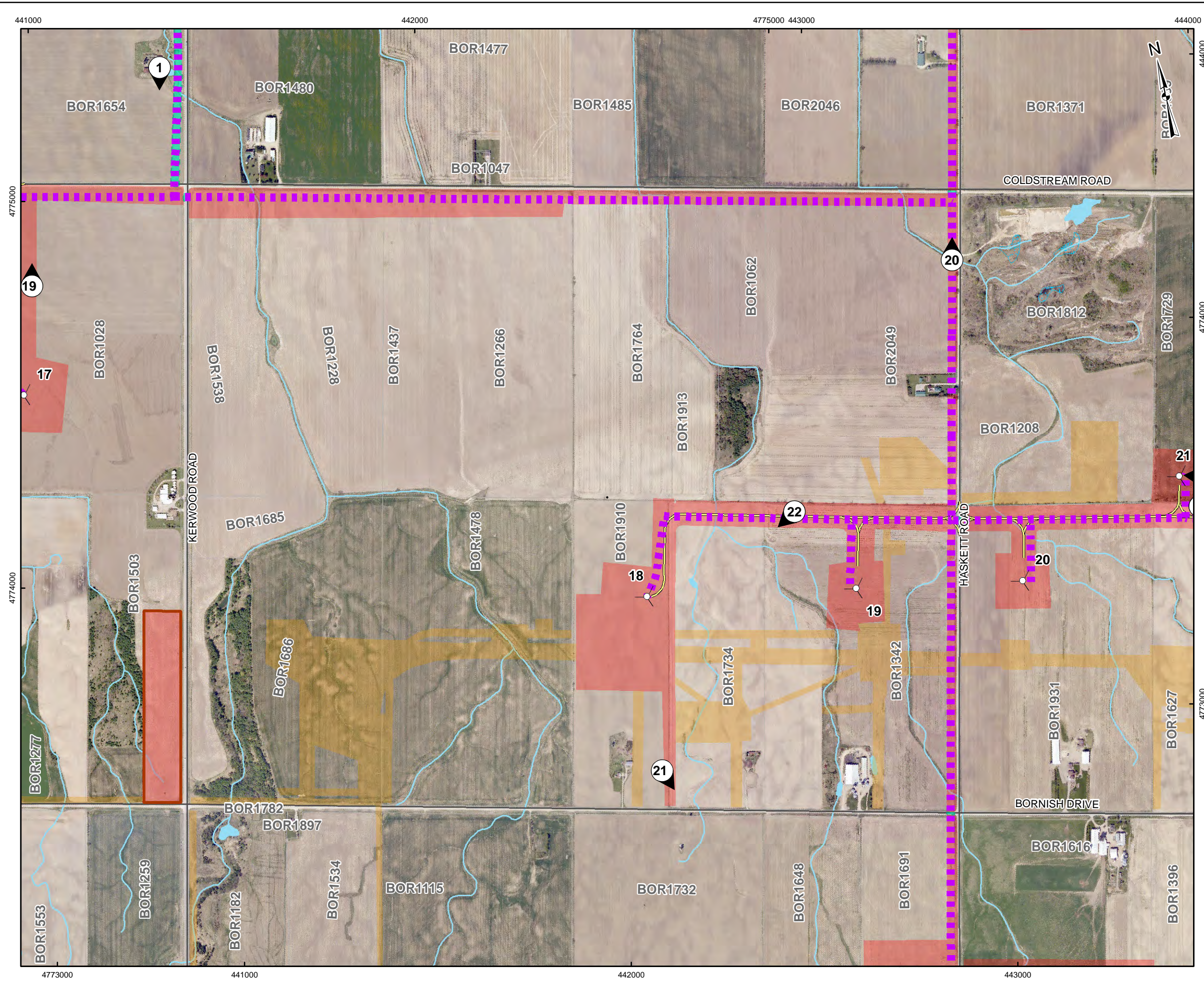


G:\Projects\201111-1154-0030_BornishWindFarm\GIS\MapDocs\Reporting\Archaeology\Stage2SurveyMethods\Fig - 5-07 STAGE 2 SURVEY METHODS.mxd

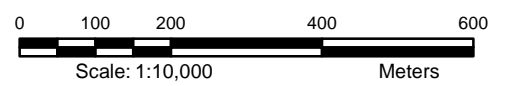


LEGEND

- 1 Photographic Direction
- Turbine Layout
- Collector Cable
- Access Road
- Roads
- Railways
- Utility Line
- Watercourse
- Stage 2 Pedestrian Survey at 5m Intervals
- Stage 2 Test Pit Survey at 5m Intervals
- Wet Area - Not Assessed
- Stage 2 Archaeological Assessment Conducted by ASI 2009-2010
- Disturbed Area - Not Assessed
- Land Parcel
- Staging/Laydown Area
- Substation
- Waterbody
- Wetland

REFERENCE

Base Data - MNR NRVIS, obtained 2004, CANMAP v2006.4
 Produced by Golder Associates Ltd under licence from
 Ontario Ministry of Natural Resources, © Queens Printer 2008
 Projection: Transverse Mercator Datum: NAD 83 Coordinate System: UTM Zone 17N

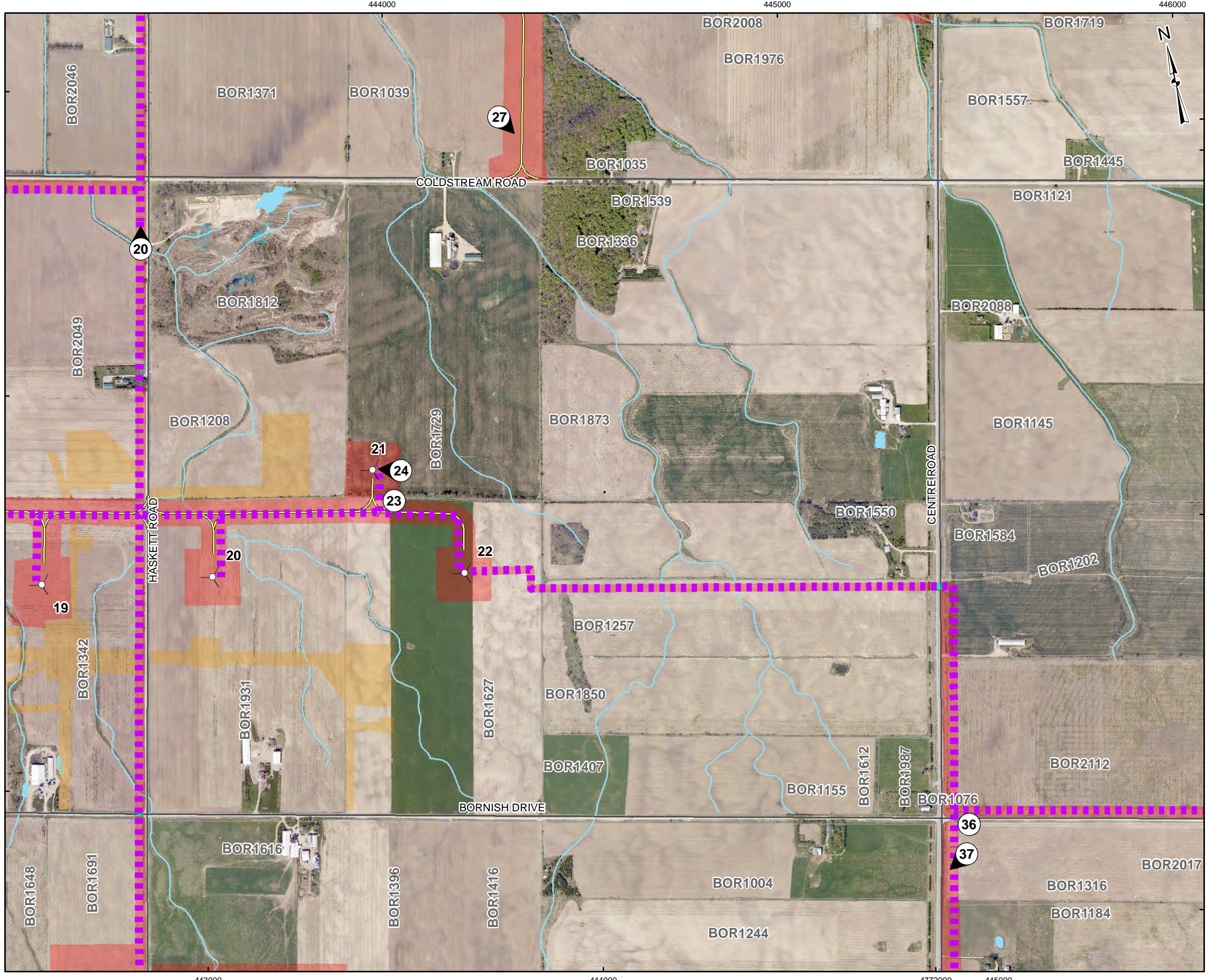


PROJECT	STAGE 2 ARCHAEOLOGICAL ASSESSMENT BORNISH WIND ENERGY CENTRE NORTH MIDDLESEX TOWNSHIP, ONTARIO		
TITLE	STAGE 2 SURVEY METHODS		
	PROJECT NO. 11-1154-0030	SCALE AS SHOWN	REV. 0.0
	DESIGN JMC 2 Feb. 2012		
	GIS JMC 7 Feb. 2012		
	CHECK JM 7 Feb. 2012		
	REVIEW JM 7 Feb. 2012		



FIGURE: 5-07

G:\Projects\2011\11-1154-0030_BornishWindFarm\GIS\XDs\Reporting\Archaeology\Stage2SurveyMethods\Fig - 5-08 STAGE 2 SURVEY METHODS.mxd

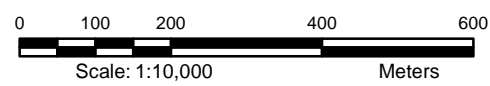


LEGEND

- 1 Photographic Direction
- Turbine Layout
- Collector Cable
- Access Road
- Roads
- Railways
- Utility Line
- Watercourse
- Stage 2 Pedestrian Survey at 5m Intervals
- Stage 2 Test Pit Survey at 5m Intervals
- Wet Area - Not Assessed
- Stage 2 Archaeological Assessment Conducted by ASI 2009-2010
- Disturbed Area - Not Assessed
- Land Parcel
- Staging/Laydown Area
- Substation
- Waterbody
- Wetland

REFERENCE

Base Data - MNR NRVIS, obtained 2004, CANMAP v2006.4
 Produced by Golder Associates Ltd under licence from
 Ontario Ministry of Natural Resources, © Queens Printer 2008
 Projection: Transverse Mercator Datum: NAD 83 Coordinate System: UTM Zone 17N

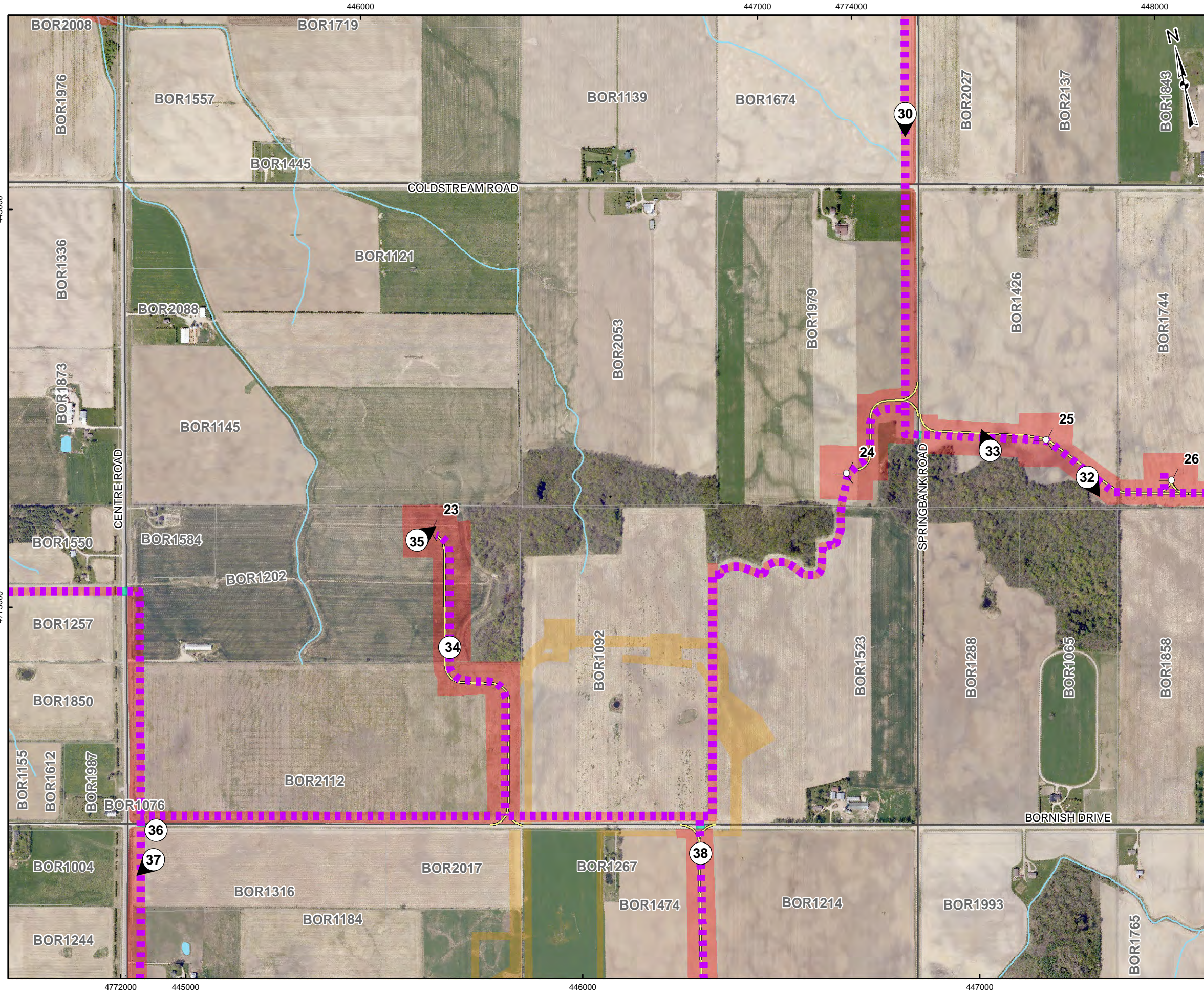


PROJECT		STAGE 2 ARCHAEOLOGICAL ASSESSMENT	
		BORNISH WIND ENERGY CENTRE	
		NORTH MIDDLESEX TOWNSHIP, ONTARIO	
TITLE			
STAGE 2 SURVEY METHODS			
PROJECT NO. 11-1154-0030		SCALE AS SHOWN	REV. 0.0
DESIGN	JMC	2 Feb. 2012	
GIS	JMC	7 Feb. 2012	
CHECK	JM	7 Feb. 2012	
REVIEW	JM	7 Feb. 2012	



FIGURE: 5-08

G:\Projects\2011\11-1154-0030_BornishWindFarm\GIS\MapDocs\Reporting\Archaeology\Stage2SurveyMethods\Fig - 5-09 STAGE 2 SURVEY METHODS.mxd

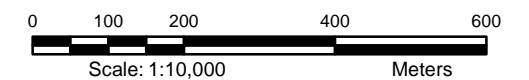


LEGEND

- 1 Photographic Direction
- Turbine Layout
- Collector Cable
- Access Road
- Roads
- Railways
- Utility Line
- Watercourse
- Stage 2 Pedestrian Survey at 5m Intervals
- Stage 2 Test Pit Survey at 5m Intervals
- Wet Area - Not Assessed
- Stage 2 Archaeological Assessment Conducted by ASI 2009-2010
- Disturbed Area - Not Assessed
- Land Parcel
- Staging/Laydown Area
- Substation
- Waterbody
- Wetland

REFERENCE

Base Data - MNR NRVIS, obtained 2004, CANMAP v2006.4
 Produced by Golder Associates Ltd under licence from
 Ontario Ministry of Natural Resources, © Queens Printer 2008
 Projection: Transverse Mercator Datum: NAD 83 Coordinate System: UTM Zone 17N



PROJECT	STAGE 2 ARCHAEOLOGICAL ASSESSMENT BORNISH WIND ENERGY CENTRE NORTH MIDDLESEX TOWNSHIP, ONTARIO		
TITLE	STAGE 2 SURVEY METHODS		
	PROJECT NO. 11-1154-0030	SCALE AS SHOWN	REV. 0.0
	DESIGN JMC	2 Feb. 2012	
	GIS JMC	7 Feb. 2012	
	CHECK JM	7 Feb. 2012	
	REVIEW JM	7 Feb. 2012	



FIGURE: 5-09

