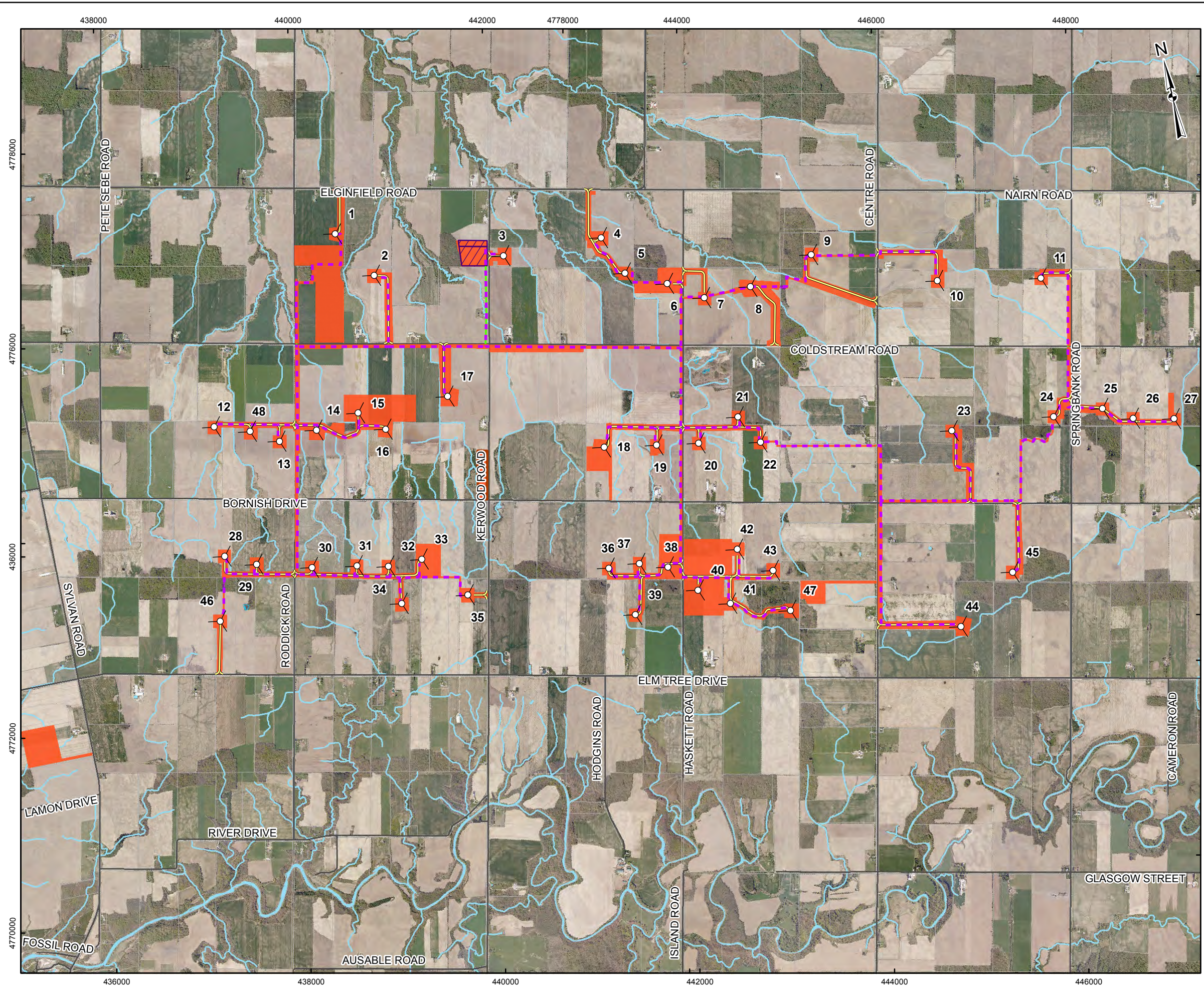


G:\Projects\2011\11-1154-0030_BornishWindFarm\GIS\MXDs\Reporting\Archaeology\Stage2\BornishWindEnergyCentre\Stage2\SurveyMethods.mxd



LEGEND

- Turbine Layout
- Collector Cable
- Access Road
- Roads
- Railways
- Utility Line
- Watercourse
- Stage 2 Pedestrian Survey at 5m Intervals
- Stage 2 Test Pit Survey at 5m Intervals
- Wet Area - Not Assessed
- Disturbed Area - Not Assessed
- Land Parcel
- Staging/Laydown Area
- Substation
- Waterbody
- Wetland

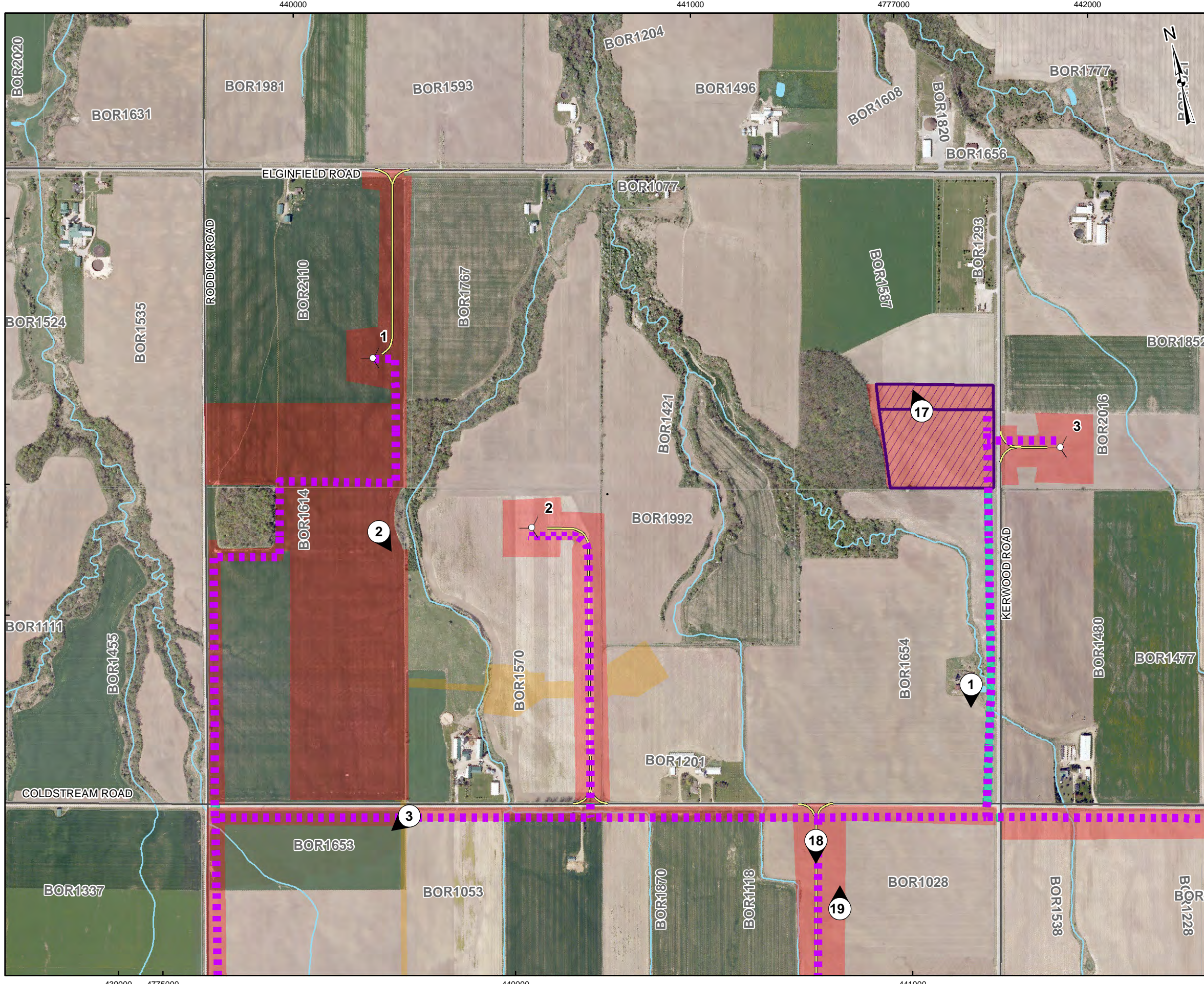
REFERENCE

Base Data - MNR NRVIS, obtained 2004, CANMAP v2006.4
 Produced by Golder Associates Ltd under licence from
 Ontario Ministry of Natural Resources, © Queens Printer 2008
 Projection: Transverse Mercator Datum: NAD 83 Coordinate System: UTM Zone 17N

0 300 600 1,200 1,800 2,400
 Scale: 1:40,000 Meters

PROJECT	STAGE 2 ARCHAEOLOGICAL ASSESSMENT BORNISH WIND ENERGY CENTRE MIDDLESEX COUNTY, ONTARIO		
TITLE	STAGE 2 SURVEY METHODS OVERVIEW		
Golder Associates Mississauga, Ontario	PROJECT NO.	11-1154-0030	SCALE AS SHOWN
	DESIGN	JMC 2 Feb. 2012	REV. 0.0
	GIS	JMC 14 Feb. 2012	FIGURE: 5-B
	CHECK	JM 14 Feb. 2012	
REVIEW	JM 14 Feb. 2012		

G:\Projects\2011\11-1154-0030_BornishWindFarm\GIS\XDs\Reporting\Archaeology\Stage2SurveyMethods\Fig - 5-01 STAGE 2 SURVEY METHODS.mxd

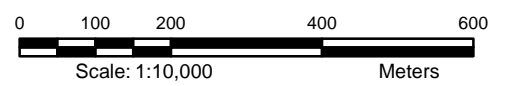


LEGEND

- ① Photographic Direction
- Turbine Layout
- Collector Cable
- Access Road
- Roads
- Railways
- Utility Line
- Watercourse
- Stage 2 Pedestrian Survey at 5m Intervals
- Stage 2 Test Pit Survey at 5m Intervals
- Wet Area - Not Assessed
- Stage 2 Archaeological Assessment Conducted by ASI 2009-2010
- Disturbed Area - Not Assessed
- Land Parcel
- Staging/Laydown Area
- Substation
- Waterbody
- Wetland

REFERENCE

Base Data - MNR NRVIS, obtained 2004, CANMAP v2006.4
 Produced by Golder Associates Ltd under licence from
 Ontario Ministry of Natural Resources, © Queens Printer 2008
 Projection: Transverse Mercator Datum: NAD 83 Coordinate System: UTM Zone 17N

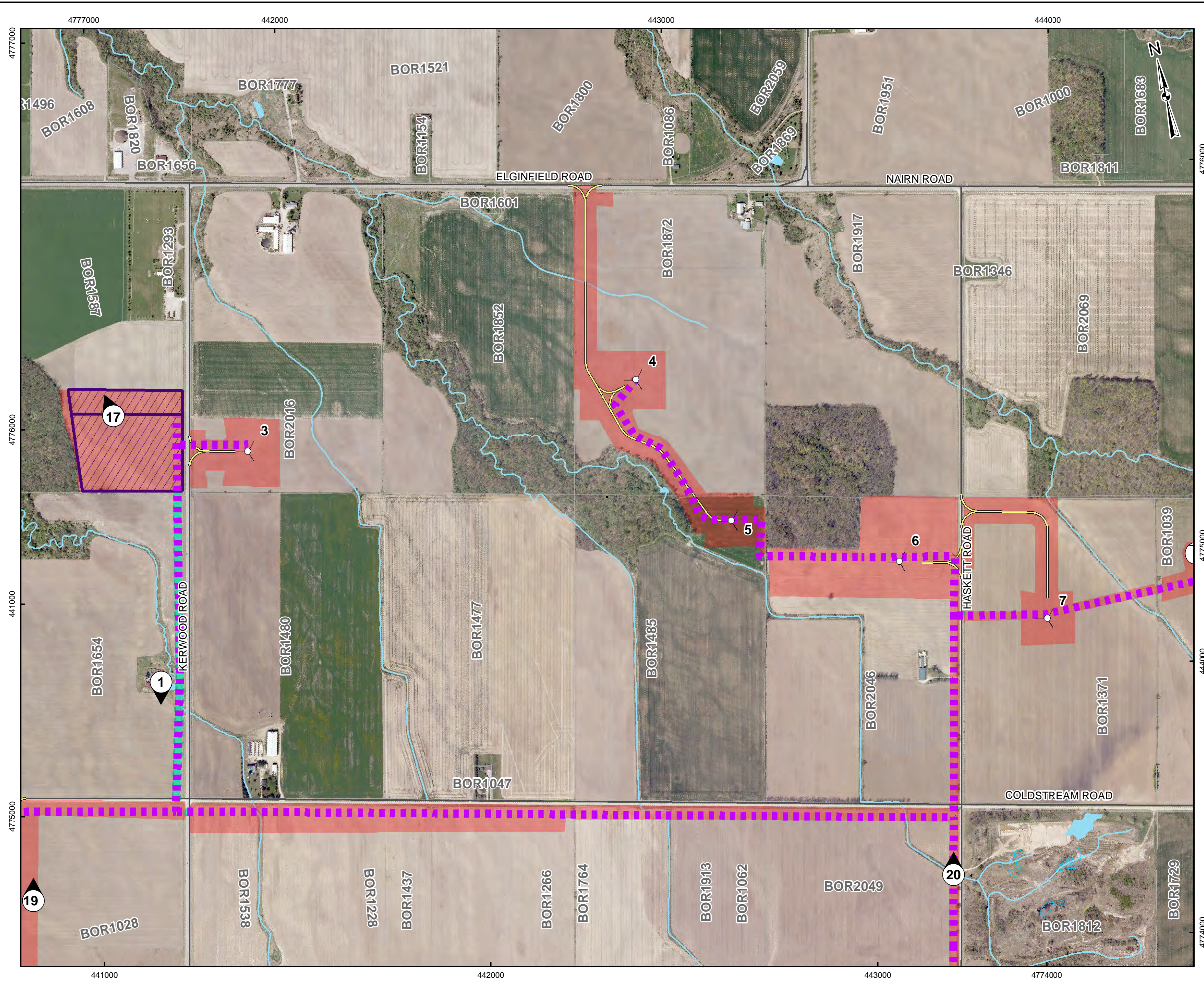


PROJECT	STAGE 2 ARCHAEOLOGICAL ASSESSMENT BORNISH WIND ENERGY CENTRE NORTH MIDDLESEX TOWNSHIP, ONTARIO		
TITLE	STAGE 2 SURVEY METHODS		
	PROJECT NO. 11-1154-0030	SCALE AS SHOWN	REV. 0.0
	DESIGN JMC	2 Feb. 2012	
	GIS JMC	7 Feb. 2012	
	CHECK JM	7 Feb. 2012	
	REVIEW JM	7 Feb. 2012	



FIGURE: 5-01

G:\Projects\2011\11-1154-0030_BornishWindFarm\GIS\MapDocs\Reporting\Archaeology\Stage2SurveyMethods\Fig - 5-02 STAGE 2 SURVEY METHODS.mxd

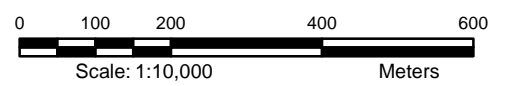


LEGEND

- Photographic Direction
- Turbine Layout
- Collector Cable
- Access Road
- Roads
- Railways
- Utility Line
- Watercourse
- Stage 2 Pedestrian Survey at 5m Intervals
- Stage 2 Test Pit Survey at 5m Intervals
- Wet Area - Not Assessed
- Stage 2 Archaeological Assessment Conducted by ASI 2009-2010
- Disturbed Area - Not Assessed
- Land Parcel
- Staging/Laydown Area
- Substation
- Waterbody
- Wetland

REFERENCE

Base Data - MNR NRVIS, obtained 2004, CANMAP v2006.4
 Produced by Golder Associates Ltd under licence from
 Ontario Ministry of Natural Resources, © Queens Printer 2008
 Projection: Transverse Mercator Datum: NAD 83 Coordinate System: UTM Zone 17N



PROJECT	STAGE 2 ARCHAEOLOGICAL ASSESSMENT BORNISH WIND ENERGY CENTRE NORTH MIDDLESEX TOWNSHIP, ONTARIO		
TITLE	STAGE 2 SURVEY METHODS		
	PROJECT NO. 11-1154-0030	SCALE AS SHOWN	REV. 0.0
	DESIGN JMC	2 Feb. 2012	
	GIS JMC	7 Feb. 2012	
	CHECK JM	7 Feb. 2012	
	REVIEW JM	7 Feb. 2012	



FIGURE: 5-02

