



Plate 49: Location 5 (AgHk-97) Historic Euro-Canadian Ceramics, actual size



1: Plain Ironstone
Location 5, cat. #9



2: Painted Ironstone
Location 5, cat. #10



3: Edged Ironstone
Location 5, cat. #3



4: Flow Transfer Printed Ironstone
Location 5, cat. #2



5: Sponged Whiteware
Location 5, cat. #5



6: Plain Whiteware
Location 5, cat. #8



7: Painted Whiteware
Location 5, cat. #6



8: Edged Whiteware
Location 5, cat. #4



9: Transfer Printed Whiteware
Location 5, cat. #7

Plate 50: Location 6 (AgHk-98) Pre-contact Aboriginal Artifact, actual size



1: Projectile Point
Location 6, cat. #1



Plate 51: Location 7 (AgHk-118) Pre-contact Aboriginal Artifact, actual size



1: Projectile Point
Location 7, cat. #1

Plate 52: Location 8 Pre-contact Aboriginal Artifact, actual size



1: Scraper
Location 8, cat. #1



Plate 53: Location 9 (AgHk-99) Pre-contact Aboriginal Artifact, actual size



1: Projectile Point
Location 9, cat. #1

Plate 54: Location 10 (AgHj-6) Pre-contact Aboriginal Artifacts, actual size



1: Biface
Location 10, cat. #4



2: Graver
Location 10, cat. #5



3: Biface
Location 10, cat. #6



4: Scraper
Location 10, cat. #7



5: Scraper
Location 10, cat. #8



6: Chipping Detritus
Location 10, cat. #1



Plate 55: Location 11 (AgHj-7) Pre-contact Aboriginal Artifacts, actual size



1: Biface
Location 11, cat. #2



2: Graver
Location 11, cat. #4

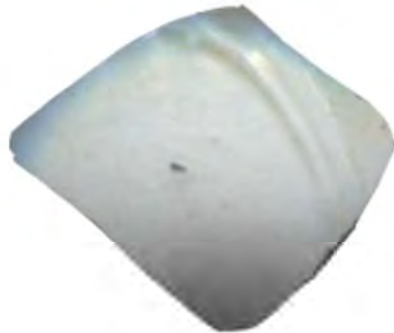


3: Chipping Detritus
Location 11, cat. #1

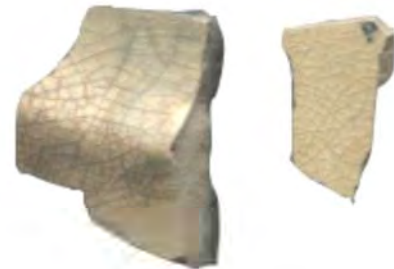
Plate 56: Location 12 (AgHj-8) Historic Euro-Canadian Ceramics, actual size



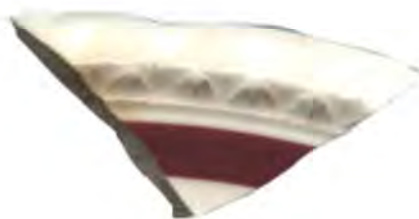
1: Plain Ironstone
Location 12, cat. #6



2: Moulded Ironstone
Location 12, cat. #7



3: Dyed Earthenware
Location 12, cat. #3



4: Painted Whiteware
Location 12, cat. #4



**STAGE 2 ARCHAEOLOGICAL ASSESSMENT
NEXTERA ENERGY CANADA, ULC**

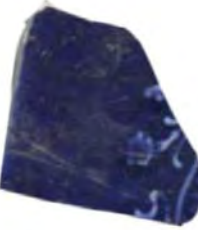
Plate 57: Location 13 (AgHk-100) Historic Euro-Canadian Ceramics, actual size



1: Plain Ironstone
Location 13, cat. #24



2: Moulded Ironstone
Location 13, cat. #55



3: Flow Transfer Printed Ironstone
Location 13, cat. #12,47



4: Painted Ironstone
Location 13, cat. #21



5: Edged Ironstone
Location 13, cat. #26



6: Rockingham Ware
Location 13, cat. #7



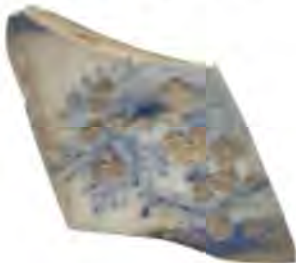
7: Painted Whiteware
Location 13, cat. #19



8: Transfer Printed Whiteware
Location 13, cat. #20



9: Transfer Printed Pearlware
Location 13, cat. #6,39



10: Banded Yellowware
Location 13, cat. #18



11: Dyed Earthenware
Location 13, cat. #22



12: Semi-porcelain
Location 13, cat. #25



Plate 58: Location 13 (AgHk-100) Historic Euro-Canadian Artifacts, actual size



1: Straight Brandy Finish
Location 13, cat. #28



2: Patent Finish
Location 13, cat. #34



3: Machine Cut Nails
Location 13, cat. #11,41,43



4: White Clay Pipe Stems
Location 13, cat. #5,38



STAGE 2 ARCHAEOLOGICAL ASSESSMENT NEXTERA ENERGY CANADA, ULC

Plate 59: Location 14 (AgHk-101) Historic Euro-Canadian Ceramics, actual size



1: Plain Ironstone
Location 14, cat. #21



2: Transfer Printed Ironstone
Location 14, cat. #29



3: Painted Ironstone
Location 14, cat. #38



4: Stamped Ironstone
Location 14, cat. #39



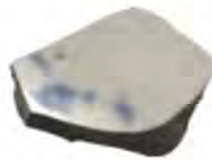
5: Slip Banded Ironstone
Location 14, cat. #43



6: Edged Ironstone
Location 14, cat. #20



7: Flow Transfer Printed Ironstone
Location 14, cat. #5



8: Sponged Ironstone
Location 14, cat. #25



9: Sponged Whiteware
Location 14, cat. #11,22



10: Edged Whiteware
Location 14, cat. #41,49



11: Painted Whiteware
Location 14, cat. #28



12: Transfer Printed Whiteware
Location 14, cat. #13



13: Plain Whiteware
Location 14, cat. #23



14: Rockingham Ware
Location 14, cat. #34



Plate 60: Location 14 (AgHk-101) Historic Euro-Canadian Artifacts, actual size



1: White Clay Pipe Stems
Location 14, cat. #3,4



2: White Clay Pipe Bowls
Location 14, cat. #9,19



3: Bell
Location 14, cat. #2



Obverse



Reverse

4: 1882 One Cent Coin
Location 14, cat. #1



Plate 61: Location 15 (AgHk-102) Historic Euro-Canadian Artifacts, actual size



1: Plain Ironstone
Location 15, cat. #17

2: Edged Ironstone
Location 15, cat. #16



3: Sponged Ironstone
Location 15, cat. #6

4: Painted Whiteware
Location 15, cat. #8

5: Edged Whiteware
Location 15, cat. #10



6: Sponged Whiteware
Location 15, cat. #14,11

7: Plain Whiteware
Location 15, cat. #2

8: White Clay Pipe Stem
Location 15, cat. #1



Plate 62: Location 16 (AgHk-103) Historic Euro-Canadian Artifacts, actual size



1: Plain Ironstone
Location 16, cat. #8



2: Moulded Ironstone
Location 16, cat. #9



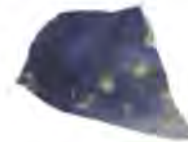
3: Stamped Ironstone
Location 16, cat. #15



4: Painted Ironstone
Location 16, cat. #18



5: Edged Ironstone
Location 16, cat. #17



6: Flow Transfer Printed Ironstone
Location 16, cat. #7



7: Painted Whiteware
Location 16, cat. #4



8: White Clay Pipe Stems
Location 16, cat. #2,3



9: White Clay Pipe Bowl
Location 16, cat. #5



10: White Clay Pipe Elbow
Location 16, cat. #6



Obverse



Reverse

11: 1882 One Cent Coin
Location 16, cat. #1



Plate 63: Location 17 (AgHk-104) Historic Euro-Canadian Ceramics, actual size



1: Plain Ironstone
Location 17, cat. #25



2: Painted Ironstone
Location 17, cat. #21



3: Moulded Ironstone
Location 17, cat. #14



4: Stamped Ironstone
Location 17, cat. #11



5: Transfer Printed Ironstone
Location 17, cat. #7



6: Painted Whiteware
Location 17, cat. #22



7: Porcelain
Location 17, cat. #18



8: Painted Semi-porcelain
Location 17, cat. #12



Plate 64: Location 17 (AgHk-104) Historic Euro-Canadian Artifacts, actual size



1: White Clay Pipe Stems
Location 17, cat. #3, 19, 13

2: White Clay Pipe Bowl
Location 17, cat. #20



3: White Clay Pipe Elbow
Location 17, cat. #2



4: Clay Marble
Location 17, cat. #1



Plate 65: Location 18 (AgHk-105) Historic Euro-Canadian Artifacts, actual size



1: Plain Ironstone
Location 18, cat. #8,32,33

2: Moulded Ironstone
Location 18, cat. #14



3: Stamped Ironstone
Location 18, cat. #16

4: Painted Ironstone
Location 18, cat. #13,35

5: Edged Ironstone
Location 18, cat. #12



6: Flow Transfer Printed Ironstone
Location 18, cat. #15



7: Edged Whiteware
Location 18, cat. #11



8: Porcelain
Location 18, cat. #9



9: White Clay Pipe Stems
Location 18, cat. #5,18



10: Bisque Porcelain Doll
Location 18, cat. #10



11: Agate Button
Location 18, cat. #17



Plate 66: Location 19 (AgHk-119) Pre-contact Aboriginal Artifacts, actual size



1: Projectile Point
Location 19, cat. #1



2: Projectile Point
Location 19, cat. #2



Plate 67: Location 20 (AgHk-106) Historic Euro-Canadian Artifacts, actual size



1: Plain Ironstone
Location 20, cat. #15,17,18



2: Moulded Ironstone
Location 20, cat. #12



3: Painted Ironstone
Location 20, cat. #14



4: Stamped Ironstone
Location 20, cat. #10



5: Stamped Whiteware
Location 20, cat. #9



6: Plain Whiteware
Location 20, cat. #6



7: Transfer Printed Whiteware
Location 20, cat. #1



8: Moulded Whiteware
Location 20, cat. #3



9: Sponged Whiteware
Location 20, cat. #7



10: White Clay Pipe Stem
Location 20, cat. #13



11: White Clay Pipe Bowl
Location 20, cat. #5



**STAGE 2 ARCHAEOLOGICAL ASSESSMENT
NEXTERA ENERGY CANADA, ULC**

Plate 68: Location 21 (AgHk-107) Historic Euro-Canadian and Pre-contact Aboriginal Artifacts, actual size



1: Plain Ironstone
Location 21, cat. #12



2: Painted Ironstone
Location 21, cat. #2,13



3: Transfer Printed Ironstone
Location 21, cat. #6



4: Moulded Ironstone
Location 21, cat. #11



5: Sponged Whiteware
Location 21, cat. #3



6: White Clay Pipe Stem
Location 21, cat. #1



7: Biface
Location 21, cat. #4



8: Chipping Detritus
Location 21, cat. #5



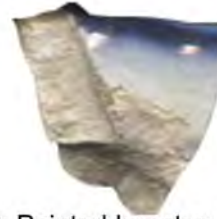
Plate 69: Location 22 (AgHk-108) Historic Euro-Canadian Artifacts, actual size



1: Plain Ironstone
Location 22, cat. #13



2: Moulded Ironstone
Location 22, cat. #10



3: Painted Ironstone
Location 22, cat. #12



4: Plain Whiteware
Location 22, cat. #4



5: Painted Whiteware
Location 22, cat. #1



6: Transfer Printed Whiteware
Location 22, cat. #5



7: Rockingham Ware
Location 22, cat. #3



8: Machine Cut Nail
Location 22, cat. #14



9: White Clay Pipe Stem
Location 22, cat. #2



10: White Clay Pipe Bowl
Location 22, cat. #11



Plate 70: Location 23 (AgHk-109) Historic Euro-Canadian Ceramics, actual size



1: Moulded Ironstone
Location 23, cat. #12,21

2: Plain Ironstone
Location 23, cat. #37



3: Ironstone Maker's Mark Selection
Location 23, cat. #11,35,36



4: Stamped Ironstone
Location 23, cat. #33

5: Edged Ironstone
Location 23, cat. #23

6: Flow Transfer Printed Ironstone
Location 23, cat. #17



7: Painted Ironstone
Location 23, cat. #7



8: Transfer Printed Ironstone
Location 23, cat. #10



**STAGE 2 ARCHAEOLOGICAL ASSESSMENT
NEXTERA ENERGY CANADA, ULC**

Plate 71: Location 23 (AgHk-109) Historic Euro-Canadian Artifacts, actual size



1: Edged Whiteware
Location 23, cat. #19



2: Flow Transfer Printed Whiteware
Location 23, cat. #18



3: White Clay Pipe Stems
Location 23, cat. #20, 5



4: White Clay Pipe Bowls
Location 23, cat. #28,6



5: Machine Cut Nail
Location 23, cat. #14

Plate 72: Location 24 (AgHk-110) Pre-contact Aboriginal Artifacts, actual size



1: Chipping Detritus
Location 24, cat. #1



2: Core
Location 24, cat. #2



Plate 73: Location 25 (AgHk-111) Historic Euro-Canadian Artifacts, actual size



1: Plain Ironstone
Location 25, cat. #2



2: Edged Ironstone
Location 25, cat. #5



3: Redware
Location 25, cat. #6

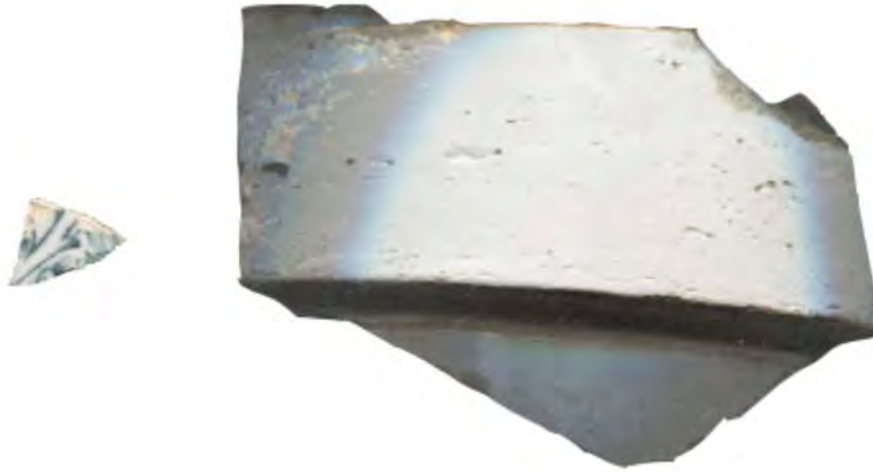
Plate 74: Location 26 (AgHk-117) Pre-contact Aboriginal Artifacts, actual size



1: Multi-tool
Location 26, cat. #1



Plate 75: Location 27 (AgHk-112) Historic Euro-Canadian Ceramics, actual size



1: Transfer Printed Whiteware
Location 27, cat. #3

2: Salt Glazed Stoneware
Location 27, cat. #1

Plate 76: Location 28 Pre-contact Aboriginal Artifact, actual size



1: Chipping Detritus
Location 28, cat. #1

Plate 77: Location 29 Historic Euro-Canadian Artifact, actual size



Obverse

Reverse

1: 1876 One Cent Coin
Location 29, cat. #1



Plate 78: Location 30 (AgHk-113) Pre-contact Aboriginal Artifacts, actual size



1: Graver
Location 30, cat. #1



2: Scraper
Location 30, cat. #2



**STAGE 2 ARCHAEOLOGICAL ASSESSMENT
NEXTERA ENERGY CANADA, ULC**

Plate 79: Location 31 (AgHk-116) Historic Euro-Canadian Ceramics, actual size



1: Plain Ironstone
Location 31, cat. #18



2: Moulded Ironstone
Location 31, cat. #6



3: Painted Ironstone
Location 31, cat. #33



4: Stamped Ironstone
Location 31, cat. #7



5: Painted Whiteware
Location 31, cat. #26



6: Stamped Whiteware
Location 31, cat. #20



7: Edged Whiteware
Location 31, cat. #5



8: Slip Banded Whiteware
Location 31, cat. #16



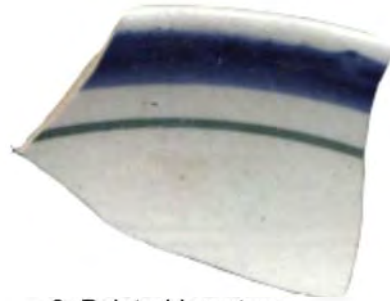
Plate 80: Location 34 (AgHk-114) Historic Euro-Canadian Artifacts, actual size



1: Plain Ironstone
Location 34, cat. #47



2: Moulded Ironstone
Location 34, cat. #37



3: Painted Ironstone
Location 34, cat. #39



4: Transfer Printed Ironstone
Location 34, cat. #20



5: Stamped Ironstone
Location 34, cat. #49



6: Plain Whiteware
Location 34, cat. #30



7: Double Ring Finish
Location 34, cat. #53



8: Glass Bottle
Location 34, cat. #41



**STAGE 2 ARCHAEOLOGICAL ASSESSMENT
NEXTERA ENERGY CANADA, ULC**

Plate 81: Location 34 (AgHk-114) Historic Euro-Canadian Artifacts, actual size



1: White Clay Pipe Stem
Location 34, cat. #36, 4



2: White Clay Pipe Bowl
Location 34, cat. #45



3: Chin Strap
Location 34, cat. #38



4: Machine Cut Nail
Location 34, cat. #43

Plate 82: Location 35 (AgHk-115) Historic Euro-Canadian Ceramics, actual size



1: Plain Ironstone
Location 35, cat. #7,17



2: Moulded Ironstone
Location 35, cat. #3



3: Transfer Printed Porcelain
Location 35, cat. #11



Plate 83: Location 36 Pre-contact Aboriginal Artifact, actual size

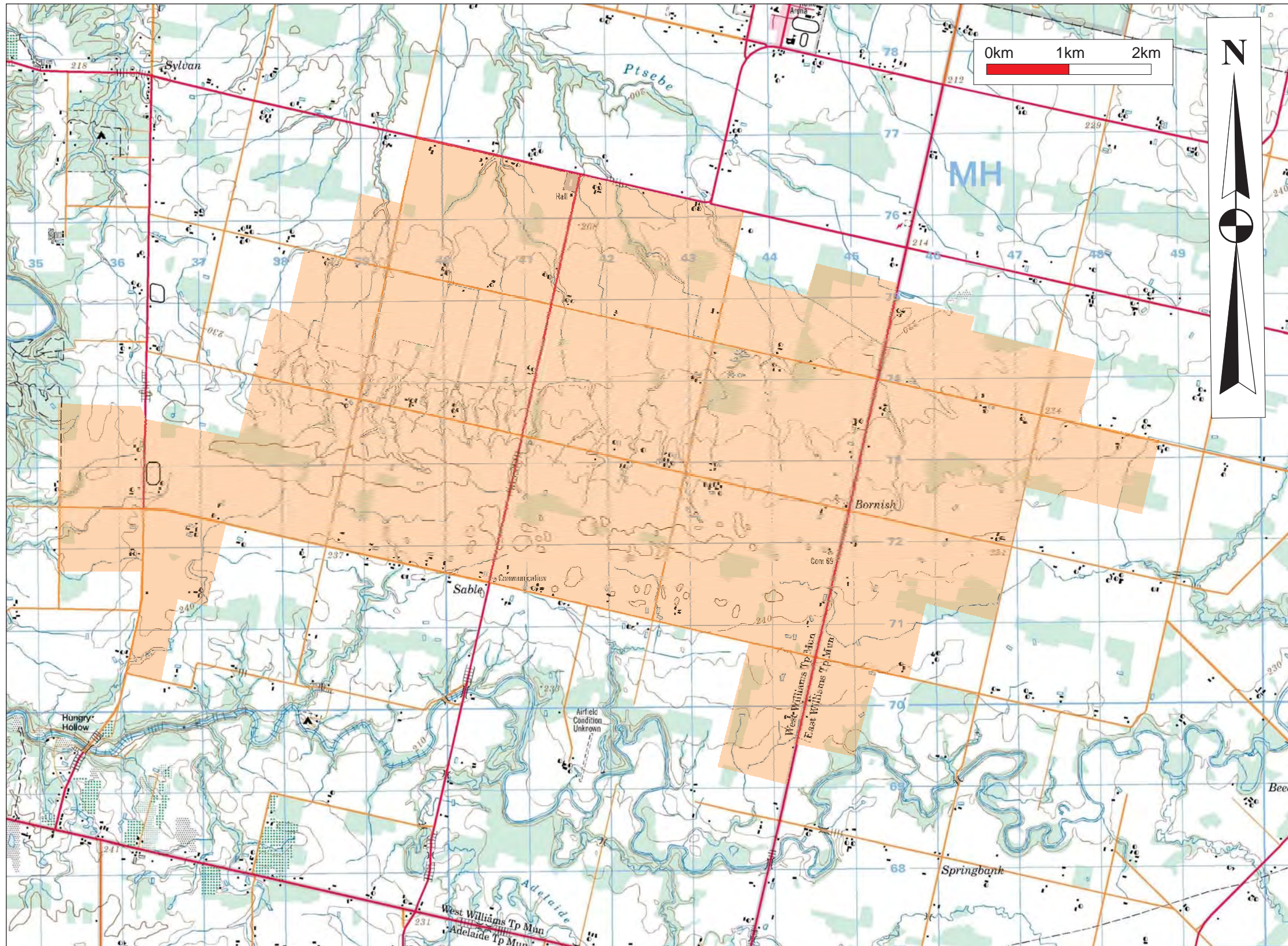


1: Chipping Detritus
Location 36, cat. #1



9.0 MAPS

All maps will follow on succeeding pages



LEGEND

 STUDY AREA


REFERENCE

DRAWING BASED ON
 Government of Canada
 2000 *Topographic Map Sheet 40 P/04: Parkhill, Ontario.*
 (Edition 8). Scale 1:50,000. Centre for Topographic
 Information, Natural Resources Canada, Ottawa.

NOTES

THIS DRAWING IS SCHEMATIC ONLY AND IS TO BE READ
 IN CONJUNCTION WITH ACCOMPANYING TEXT.

ALL LOCATIONS ARE APPROXIMATE.

PROJECT		STAGE 2 ARCHAEOLOGICAL ASSESSMENT BORNISH WIND ENERGY CENTRE MIDDLESEX COUNTY, ONTARIO		
TITLE		LOCATION OF STUDY AREA		
	PROJECT No.	11-1154-0030	FILE No.	1111540030-2000-R01001
	CADD	JM	SCALE	AS SHOWN
	CHECK		REV.	
			FIGURE 1	

