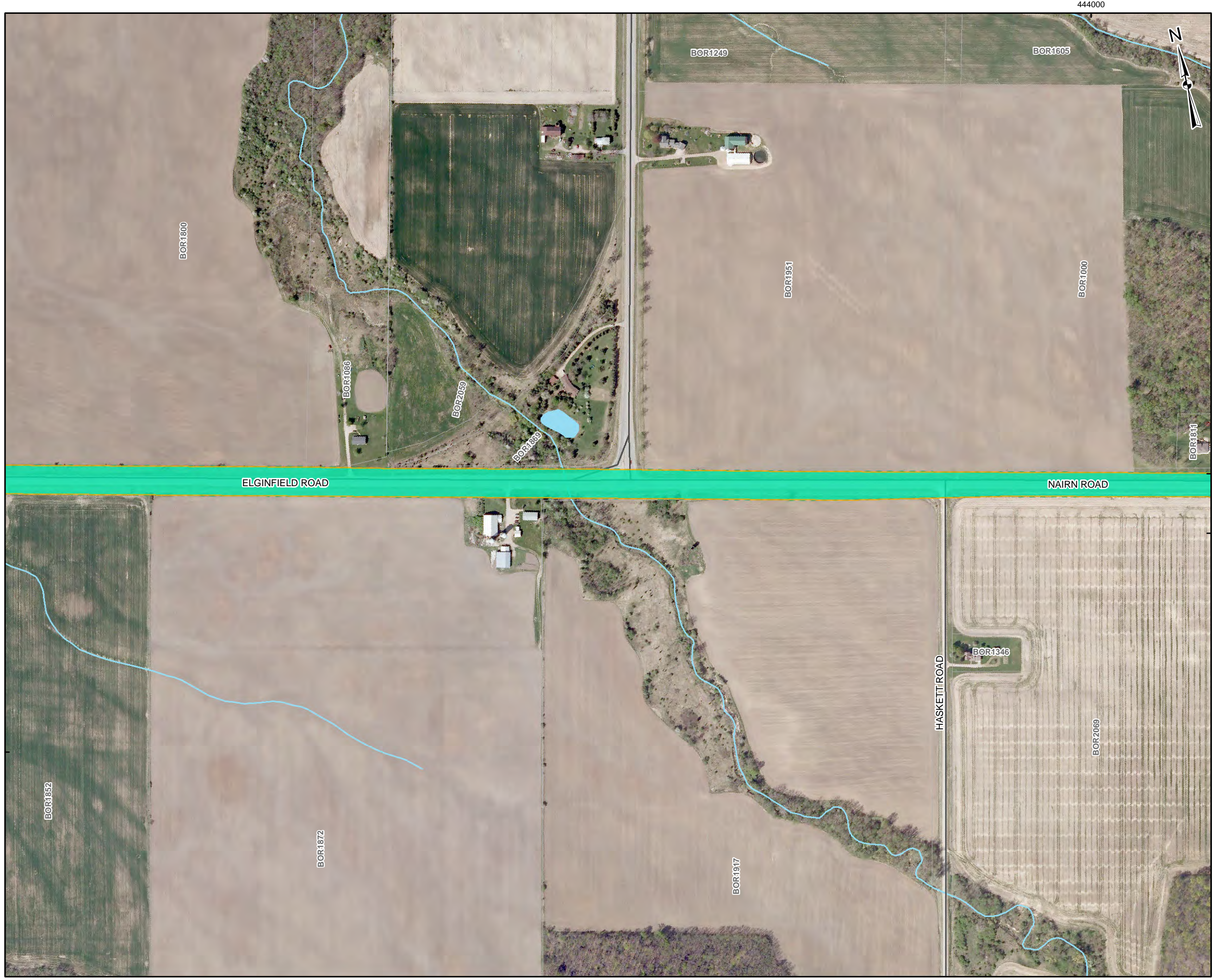


G:\Projects\2011\11-1154-0030\_BornishWindFarm\GIS\MapXDs\Reporting\Archaeology\Stage1\_2\ParkhillPOIESASStudyMethods\_02.mxd



**LEGEND**

- 1 Photographic Direction
- Roads
- Railways
- Utility Line
- Watercourse
- Proposed Point of Interconnection Study Area
- Transmission Line ROW
- Scatter Size Area
- Stage 2 Pedestrian Survey at 5m Intervals
- Disturbed Area - Not Assessed
- Waterbody
- Wetland
- Land Parcel

**REFERENCE**

Base Data - MNR LIO, obtained 2009  
 Produced by Golder Associates Ltd under licence from  
 Ontario Ministry of Natural Resources, © Queens Printer 2012  
 Projection: Transverse Mercator Datum: NAD 83 Coordinate System: UTM Zone 17

100 50 0 100 200  
 SCALE 1:5,000 METRES

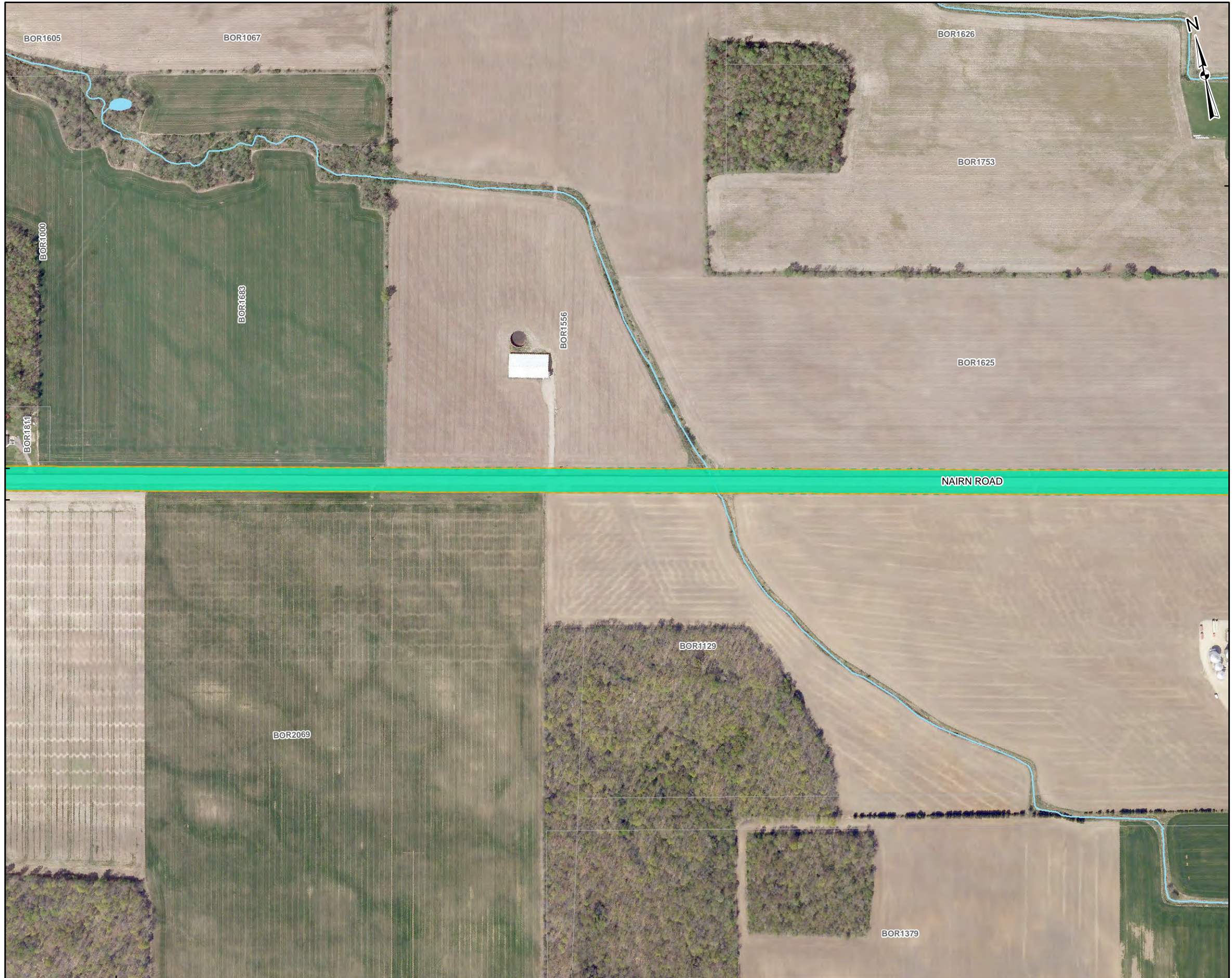
PROJECT STAGE 1-2 ARCHAEOLOGICAL ASSESSMENT, PARKHILL POINT OF INTERCONNECT, MIDDLESEX COUNTY, ONTARIO			
TITLE STAGE 2 SURVEY METHODS			
	PROJECT NO.	11-1154-0030	SCALE AS SHOWN
	DESIGN	JMC 1 Feb. 2012	REV. 0.0
	GIS	JMC 2 Feb. 2012	
	CHECK	SM 2 Feb. 2012	
	REVIEW	JM 2 Feb. 2012	

**FIGURE: 6-02**



G:\Projects\2011\11-1154-0030\_BornishWindFarm\GIS\MapXDs\Reporting\Archaeology\Stage1\_2\ParkhillPOI\ESASStudyMethods\_03.mxd

444000 4776000



444000

**LEGEND**

- Photographic Direction
- Roads
- Railways
- Utility Line
- Watercourse
- Proposed Point of Interconnection Study Area
- Transmission Line ROW
- Scatter Size Area
- Stage 2 Pedestrian Survey at 5m Intervals
- Disturbed Area - Not Assessed
- Waterbody
- Wetland
- Land Parcel

**REFERENCE**

Base Data - MNR LIO, obtained 2009  
 Produced by Golder Associates Ltd under licence from  
 Ontario Ministry of Natural Resources, © Queens Printer 2012  
 Projection: Transverse Mercator Datum: NAD 83 Coordinate System: UTM Zone 17

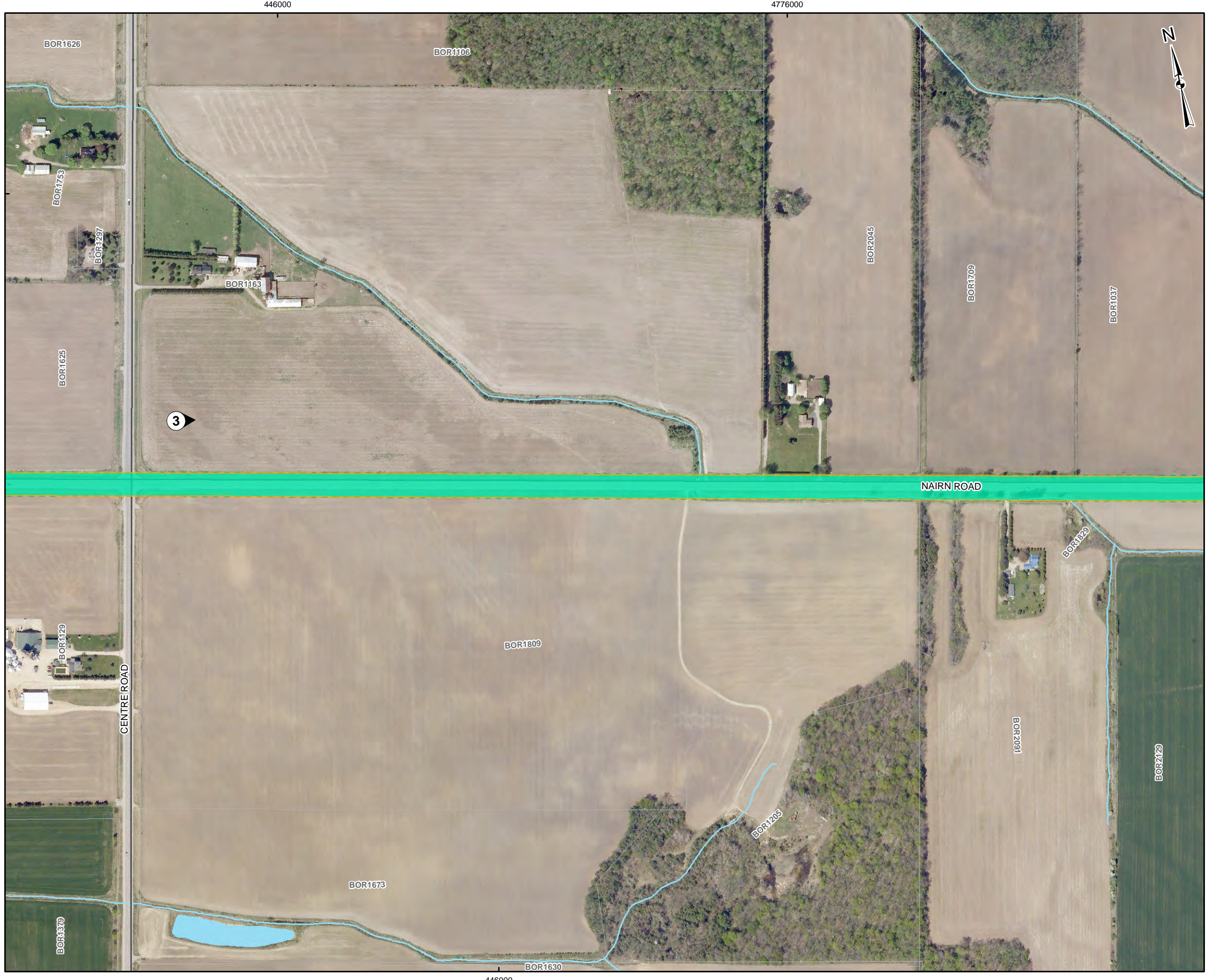


PROJECT STAGE 1-2 ARCHAEOLOGICAL ASSESSMENT, PARKHILL POINT OF INTERCONNECT, MIDDLESEX COUNTY, ONTARIO			
TITLE  STAGE 2 SURVEY METHODS			
Golder Associates Mississauga, Ontario	PROJECT NO.	11-1154-0030	SCALE AS SHOWN
	DESIGN	JMC 1 Feb. 2012	REV. 0.0
	GIS	JMC 2 Feb. 2012	
	CHECK	SM 2 Feb. 2012	
	REVIEW	JM 2 Feb. 2012	

FIGURE: 6-03



G:\Projects\2011\11-1154-0030\_BornishWindFarm\GIS\MapXDs\Reporting\Archaeology\Stage1\_2\ParkhillPOIESASStudyMethods\_04.mxd



**LEGEND**

- 1 Photographic Direction
- Roads
- Railways
- Utility Line
- Watercourse
- Proposed Point of Interconnection Study Area
- Transmission Line ROW
- Scatter Size Area
- Stage 2 Pedestrian Survey at 5m Intervals
- Disturbed Area - Not Assessed
- Waterbody
- Wetland
- Land Parcel

**REFERENCE**

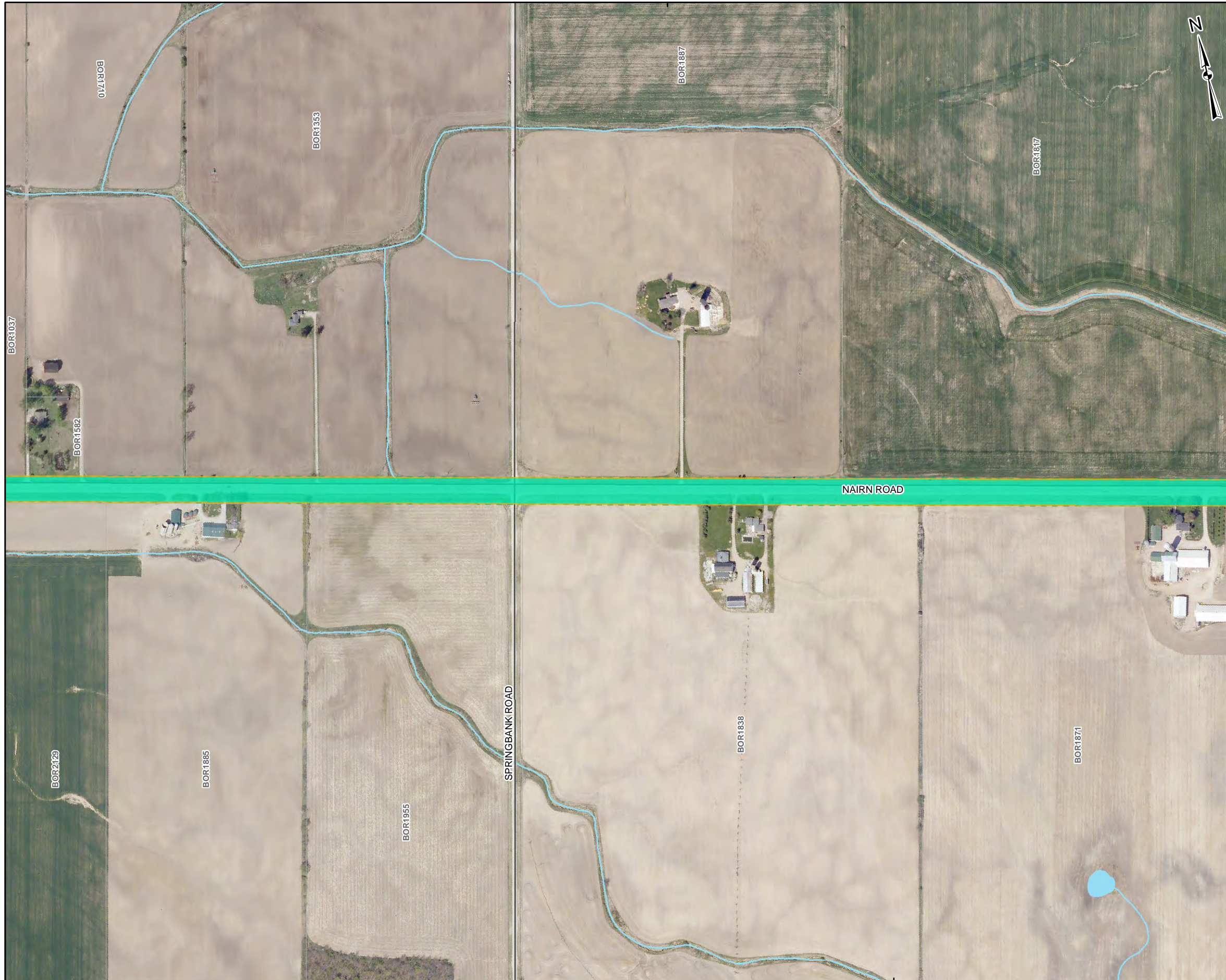
Base Data - MNR LIO, obtained 2009  
 Produced by Golder Associates Ltd under licence from  
 Ontario Ministry of Natural Resources, © Queens Printer 2012  
 Projection: Transverse Mercator Datum: NAD 83 Coordinate System: UTM Zone 17



PROJECT STAGE 1-2 ARCHAEOLOGICAL ASSESSMENT, PARKHILL POINT OF INTERCONNECT, MIDDLESEX COUNTY, ONTARIO			
TITLE STAGE 2 SURVEY METHODS			
 Mississauga, Ontario	PROJECT NO.	11-1154-0030	SCALE AS SHOWN
	DESIGN	JMC 1 Feb. 2012	REV. 0.0
	GIS	JMC 2 Feb. 2012	FIGURE: 6-04
	CHECK	SM 2 Feb. 2012	
REVIEW	JM 2 Feb. 2012		



448000



448000

**LEGEND**

- 1 Photographic Direction
- Roads
- Railways
- Utility Line
- Watercourse
- Proposed Point of Interconnection Study Area
- Transmission Line ROW
- Scatter Size Area
- Stage 2 Pedestrian Survey at 5m Intervals
- Disturbed Area - Not Assessed
- Waterbody
- Wetland
- Land Parcel

**REFERENCE**

Base Data - MNR LIO, obtained 2009  
 Produced by Golder Associates Ltd under licence from  
 Ontario Ministry of Natural Resources, © Queens Printer 2012  
 Projection: Transverse Mercator Datum: NAD 83 Coordinate System: UTM Zone 17



PROJECT STAGE 1-2 ARCHAEOLOGICAL ASSESSMENT, PARKHILL POINT OF INTERCONNECT, MIDDLESEX COUNTY, ONTARIO			
TITLE STAGE 2 SURVEY METHODS			
 Golder Associates Mississauga, Ontario	PROJECT NO.	11-1154-0030	SCALE AS SHOWN
	DESIGN	JMC	1 Feb. 2012
	GIS	JMC	2 Feb. 2012
	CHECK	SM	2 Feb. 2012
	REVIEW	JM	2 Feb. 2012
			REV. 0.0

FIGURE: 6-05





G:\Projects\2011\11-1154-0030\_BornishWindFarm\GIS\MapXDs\Reporting\Archaeology\Stage1\_2\ParkhillPOIESASStudyMethods\_06.mxd



**LEGEND**

- 1 Photographic Direction
- Roads
- Railways
- Utility Line
- Watercourse
- Proposed Point of Interconnection Study Area
- Transmission Line ROW
- Scatter Size Area
- Stage 2 Pedestrian Survey at 5m Intervals
- Disturbed Area - Not Assessed
- Waterbody
- Wetland
- Land Parcel

**REFERENCE**

Base Data - MNR LIO, obtained 2009  
 Produced by Golder Associates Ltd under licence from  
 Ontario Ministry of Natural Resources, © Queens Printer 2012  
 Projection: Transverse Mercator Datum: NAD 83 Coordinate System: UTM Zone 17



PROJECT STAGE 1-2 ARCHAEOLOGICAL ASSESSMENT, PARKHILL POINT OF INTERCONNECT, MIDDLESEX COUNTY, ONTARIO				
TITLE STAGE 2 SURVEY METHODS				
 Golder Associates Mississauga, Ontario	PROJECT NO.	11-1154-0030	SCALE AS SHOWN	REV. 0.0
	DESIGN	JMC	1 Feb. 2012	
	GIS	JMC	2 Feb. 2012	
	CHECK	SM	2 Feb. 2012	
	REVIEW	JM	2 Feb. 2012	

FIGURE: 6-06

