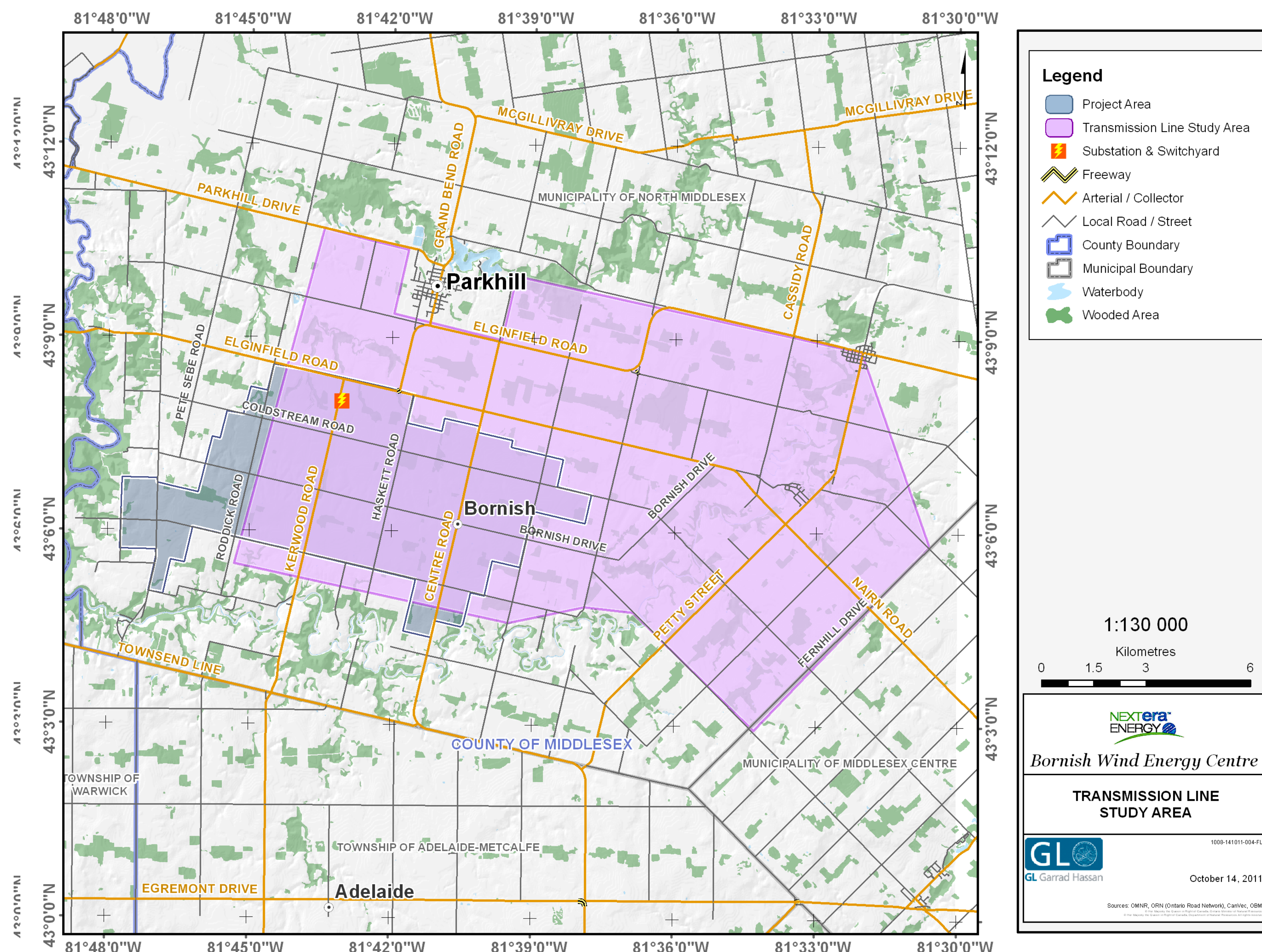


Wind Energy Centres - Open House

The Bornish Project

- The proposed Bornish Wind Energy Centre is planned to be located in the Municipality of North Middlesex, Middlesex County, Ontario
- Project components will be installed on privately-owned agricultural lots
- The project will have a maximum name plate capacity of 73-megawatts of electricity which will generate enough energy to power approximately 21,870 homes
- Project infrastructure will include:
 - ✦ 45 1.62-megawatt GE turbines
 - ✦ Laydown and storage areas (including temporary staging areas) for construction equipment and supplies
 - ✦ A substation located on site and a 115 kV transmission line to connect to the Hydro One transmission system
 - ✦ The proposed transmission line will travel east along Elginfield and Nairn Roads, connecting to the Hydro One transmission system
 - ✦ Underground electrical collection lines (located on private lands) to connect the turbines to the transformer substation
 - ✦ Turbine access roads construction and maintenance
 - ✦ Permanent meteorological towers (height 80-100m) to measure wind speeds, wind direction, temperature and humidity
 - ✦ An operations and maintenance building



Wind Energy Centres - Open House

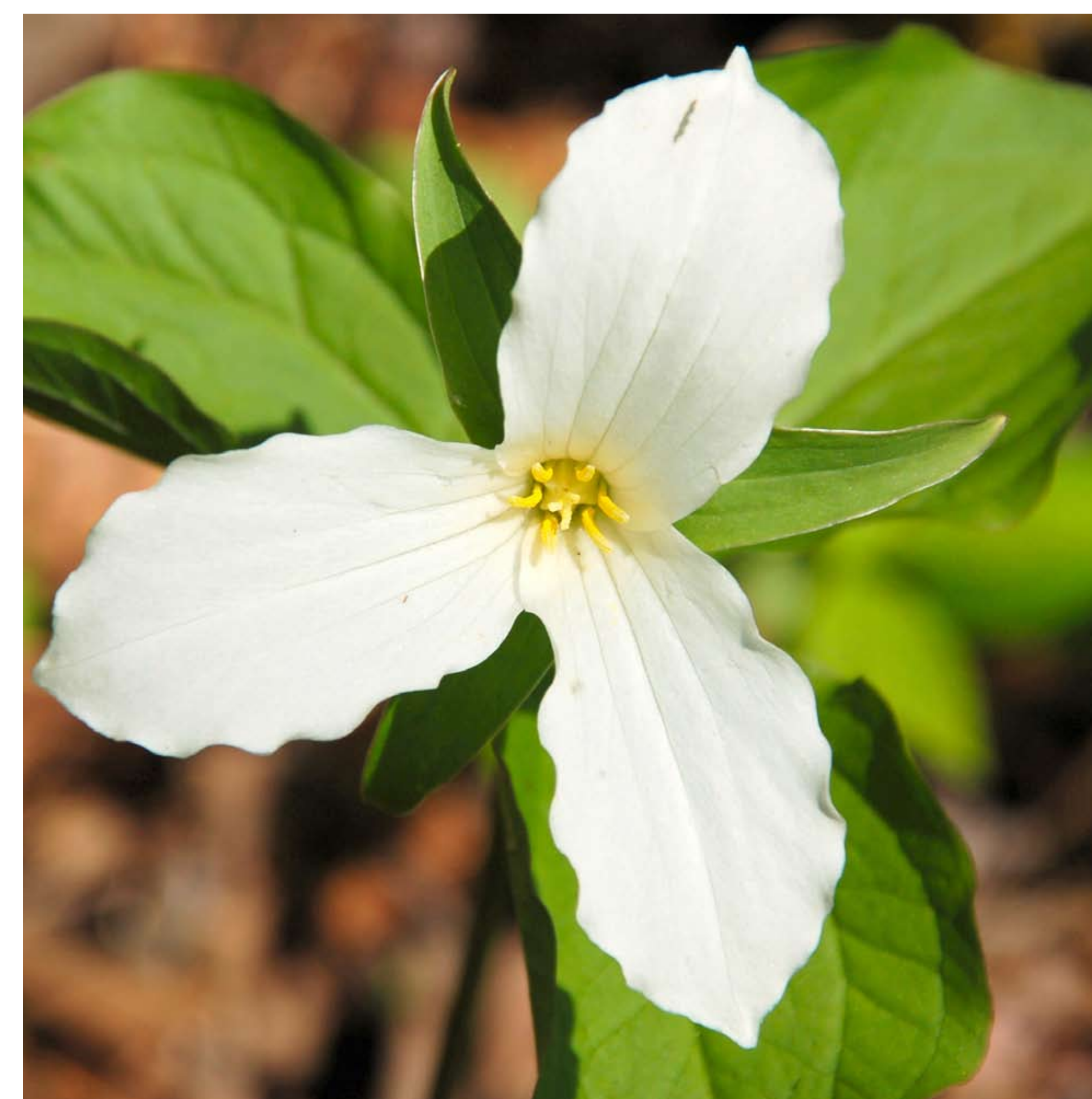
Renewable Energy in Ontario

The Green Energy and Green Economy Act

- Developed to stimulate the “green” economy in Ontario and create up to 50,000 jobs

Key Components:

- A provincial obligation to purchase green energy
- Priority grid access for renewable energy projects
- Long-term fixed-price power contracts
- Streamlined regulatory and approvals process



Provincial Green Energy Initiatives and the Feed-in-Tariff Program:

- Feed-in-Tariff (FIT) Program, launched by the Ontario Power Authority, is North America’s first comprehensive guaranteed pricing structure for renewable electricity production
- The FIT Program offers stable prices and long-term contracts to green energy projects that encourage investment in renewable energy and economic development across the Province
- NextEra Energy Canada had six projects that were awarded FIT contracts on July 4, 2011:

- ✦ Adelaide Wind Energy Centre
- ✦ Bluewater Wind Energy Centre
- ✦ Bornish Wind Energy Centre
- ✦ East Durham Wind Energy Centre
- ✦ Goshen Wind Energy Centre
- ✦ Jericho Wind Energy Centre

We have two additional projects which have been awarded a FIT contract by the Ontario Power Authority and have filed their respective Renewable Energy Approval application. Both are awaiting a decision.

Ontario's Renewable Energy Approval Process

- The Renewable Energy Approval (REA) process, outlined in Ontario Regulation 359/09, is required for larger wind power projects under Ontario's Green Energy Act
- NextEra Energy Canada will submit a Renewable Energy Approval application to the Ontario Ministry of the Environment (MOE) for each project
- The MOE will assess the application for completeness and then undertake a technical review process to determine whether to issue an approval
- Other agencies, including the Ministry of Natural Resources (MNR), the Ministry of Transportation (MTO), the Ministry of Tourism and Culture (MTC) and local conservation authorities will also provide input

Reports included in application:

- ✦ **Archaeology and Cultural Heritage Assessment** – to identify potential effects on archaeological or cultural heritage resources
- ✦ **Natural Heritage Assessment Report** – to identify potential effects on birds, bats, other wildlife, woodlands, wetlands, areas of natural and scientific interest, etc.
- ✦ **Noise Study Report** – to ensure the project is in compliance with noise regulations
- ✦ **Water Body and Water Assessment Report** – to identify potential effects on streams, seepage areas and lakes
- ✦ **Construction Plan, Design and Operation, Decommissioning Reports** – to describe these activities and identify any potential effects resulting from the various project phases
- ✦ **Consultation Report** – to demonstrate how NextEra Energy Canada engaged the public and Aboriginal communities throughout the development of the project
- ✦ **Wind Turbine Specifications** – to describe the turbine technology selected for the project
- ✦ **Project Description Report** – to provide an overview of the project and a summary of all the required REA reports