

Legend

Project Components	Other Components
Wind Turbine (48)	1-Storey Receptor
Substation	2-Storeys Receptor
Participating Receptor	3-Storeys Receptor
Project Area	Vacant Lot Receptor
Investigation Area (1.5 km from noise sources)	Other Building
	Railway
	Arterial / Collector
	Local Road / Street
	Permanent Watercourse
	Intermittent Watercourse
	Runway
	Residential Area
	Park / Sports Field
	Campground
	Cemetery
	ANSI - Life Science
	Pit or Quarry
	Waterbody
	Wetland
	Wooded Area
	Lot Line
	Municipal Boundary
	County Boundary

Predicted Sound Level at Wind Speed of 6 m/s

- 40 dB(A) at 7.5 m agl*
- 40 dB(A) at 4.5 m agl*
- 40 dB(A) at 1.5 m agl*

*agl: Above Ground Level



NEXTERA ENERGY

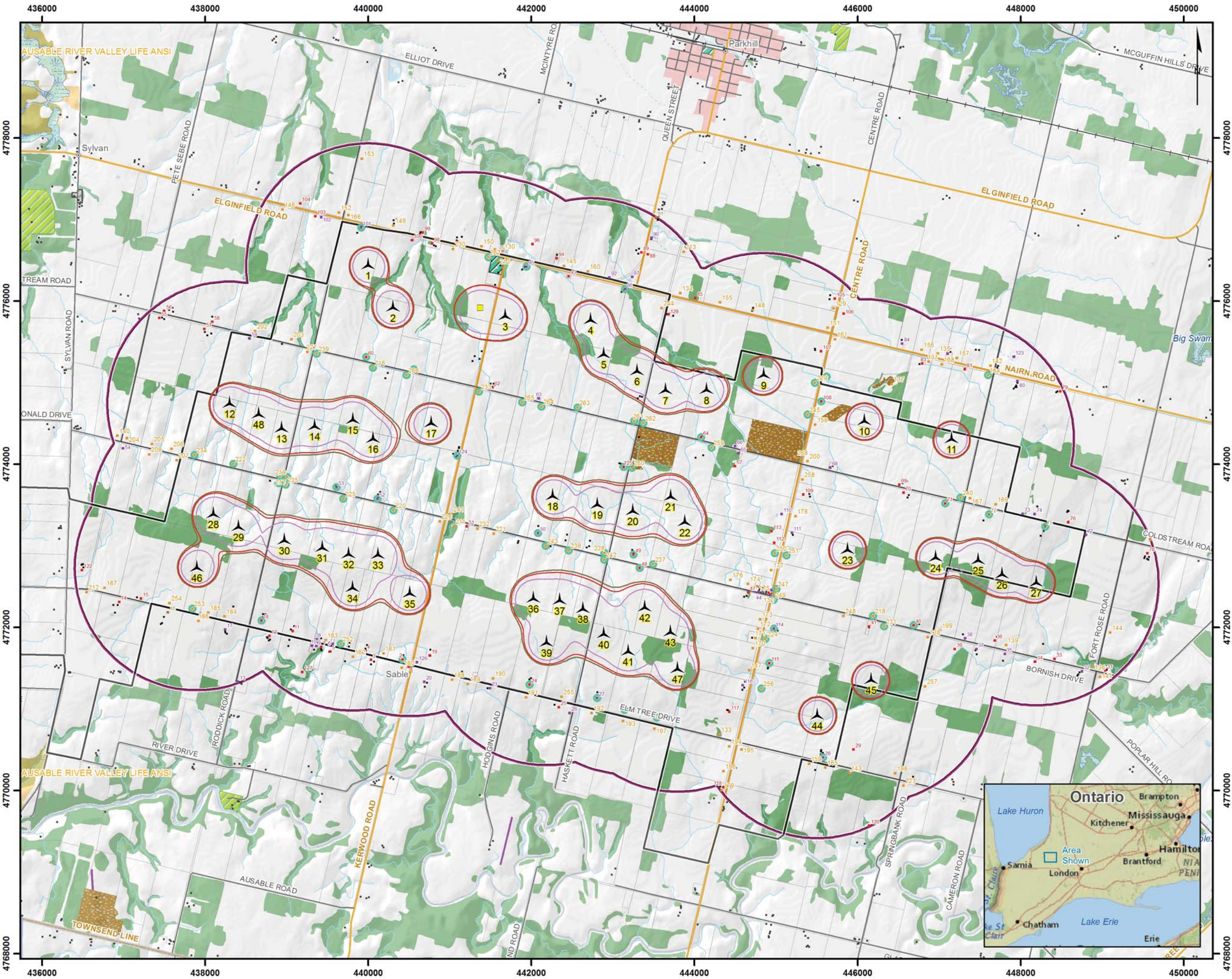
Bornish Wind Energy Centre

48 TURBINE LAYOUT WITH SIMULATED NOISE ISOCONTOURS (WIND SPEED OF 6 M/S) GE 1.6-100

GL Garrad Hassan

1008-015-090712-002-RG
July 09, 2012

Projection: UTM Zone 17, NAD83
Sources: Ontario Base Mapping, Ontario Road Network, Land Information Ontario, Geobase, CanVec, Industry Canada.
© Her Majesty the Queen in Right of Canada, Department of Natural Resources
© Her Majesty the Queen in Right of Canada, Ontario Minister of Natural Resources. All rights reserved.



Legend

Project Components	Other Components
Wind Turbine (48)	1-Storey Receptor
Substation	2-Storeys Receptor
Participating Receptor	3-Storeys Receptor
Project Area	Vacant Lot Receptor
Investigation Area (1.5 km from noise sources)	Other Building
	Railway
	Arterial / Collector
	Local Road / Street
	Permanent Watercourse
	Intermittent Watercourse
	Runway
	Residential Area
	Park / Sports Field
	Campground
	Cemetery
	ANSI - Life Science
	Pit or Quarry
	Waterbody
	Wetland
	Wooded Area
	Lot Line
	Municipal Boundary
	County Boundary

Predicted Sound Level at Wind Speed of 8 m/s

- 45 dB(A) at 7.5 m agl*
- 45 dB(A) at 4.5 m agl*
- 45 dB(A) at 1.5 m agl*

*agl: Above Ground Level



NEXTERA ENERGY

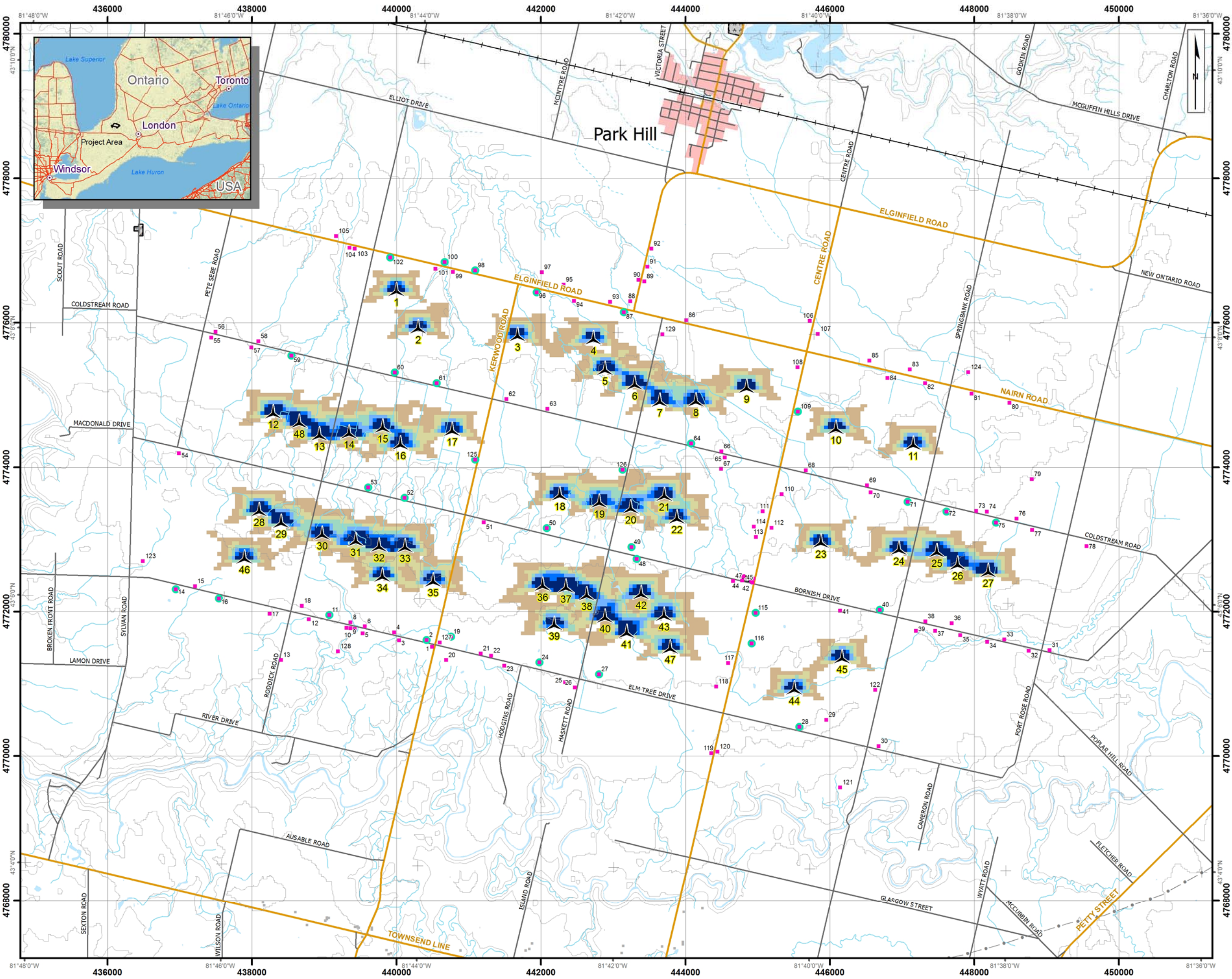
Bornish Wind Energy Centre

48 TURBINE LAYOUT WITH SIMULATED NOISE ISOCONTOURS (WIND SPEED OF 8 M/S) GE 1.6-100

GL Garrad Hassan

1008-015-090712-002-RG
July 09, 2012

Projection: UTM Zone 17, NAD83
Sources: Ontario Base Mapping, Ontario Road Network, Land Information Ontario, Geobase, CanVec, Industry Canada.
© Her Majesty the Queen in Right of Canada, Department of Natural Resources
© Her Majesty the Queen in Right of Canada, Ontario Minister of Natural Resources. All rights reserved.



Legend

Project Components

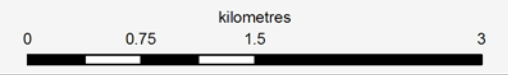
- Wind Turbines (38)
- Participating Dwelling


Other Components


- Receptor
- Transmission Line
- Railway
- Freeway
- Arterial / Collector
- Local Road / Street
- Pipeline
- Permanent Watercourse
- Intermittent Watercourse
- Contour (Interval: 10m)
- Residential Area
- Waterbody

Shadow Flicker [hour/year]

- 30 - 59
- 60 - 89
- 90 - 119
- 120 - 149
- 150 - 179
- 180 and over




Bornish Wind Energy Centre
 SHADOW FLICKER ANALYSIS



1008-002-161211-001-JM
 December 16, 2011
Projection: UTM Zone 17, NAD83
 Sources: Ontario Base Mapping, Ontario Road Network,
 Land Information Ontario, Geobase, CanVec, Industry Canada.

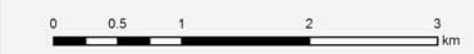


Legend

Infrastructure Changes	Project Components
Service Road	Wind Turbine (48) (November 16, 2011)
Added	Meteorological Tower
Removed	Project Area
No Change	Laydown Area
Collection System	O&M Building Area
Added	Substation / Switchyard
Removed	
No Change	
Transmission Line	Other Components
Added	Receptor
Removed	Other Building
No Change	Railway
Disturbance Area	Arterial Road
Added	Local Road / Street
Removed	Permanent Watercourse
No Change	Intermittent Watercourse
	Residential Area
	Waterbody
	Wooded Area
	Lot Line


NOTES:

- CHANGE NO. 1
Collection line between T20 and T21 was re-routed
- CHANGE NO. 2
T16 and T17 will be connected by new road and collection line
Connection between T14 and T15 removed
- CHANGE NO. 3
Collection line to T24 straightened to reduce cable bends
- CHANGE NO. 4
Access road moved 40m South
- CHANGE NO. 5
Addition of collection line and access road to meteorological tower
- CHANGE NO. 6
Relocation of Parkhill Substation




Bornish Wind Project

INFRASTRUCTURE CHANGE MAP
 Page 1 of 2



 1008-041-120104-001-RG
 GAN_Bornish_Collection_T2_201105_10080_0001_E_10080_0001
 _447_284_284_V1_1_10080_0001_V1_20111116
 July 05, 2012
 Projection: UTM Zone 17, NAD83
 Sources: Ontario Base Mapping, Ontario Road Network,
 Land Information Ontario, Geobase, CanVec, Industry Canada
 © Her Majesty the Queen in Right of Canada, Department of Natural Resources
 © Her Majesty the Queen in Right of Canada, Ontario Minister of Natural Resources. All rights reserved.

