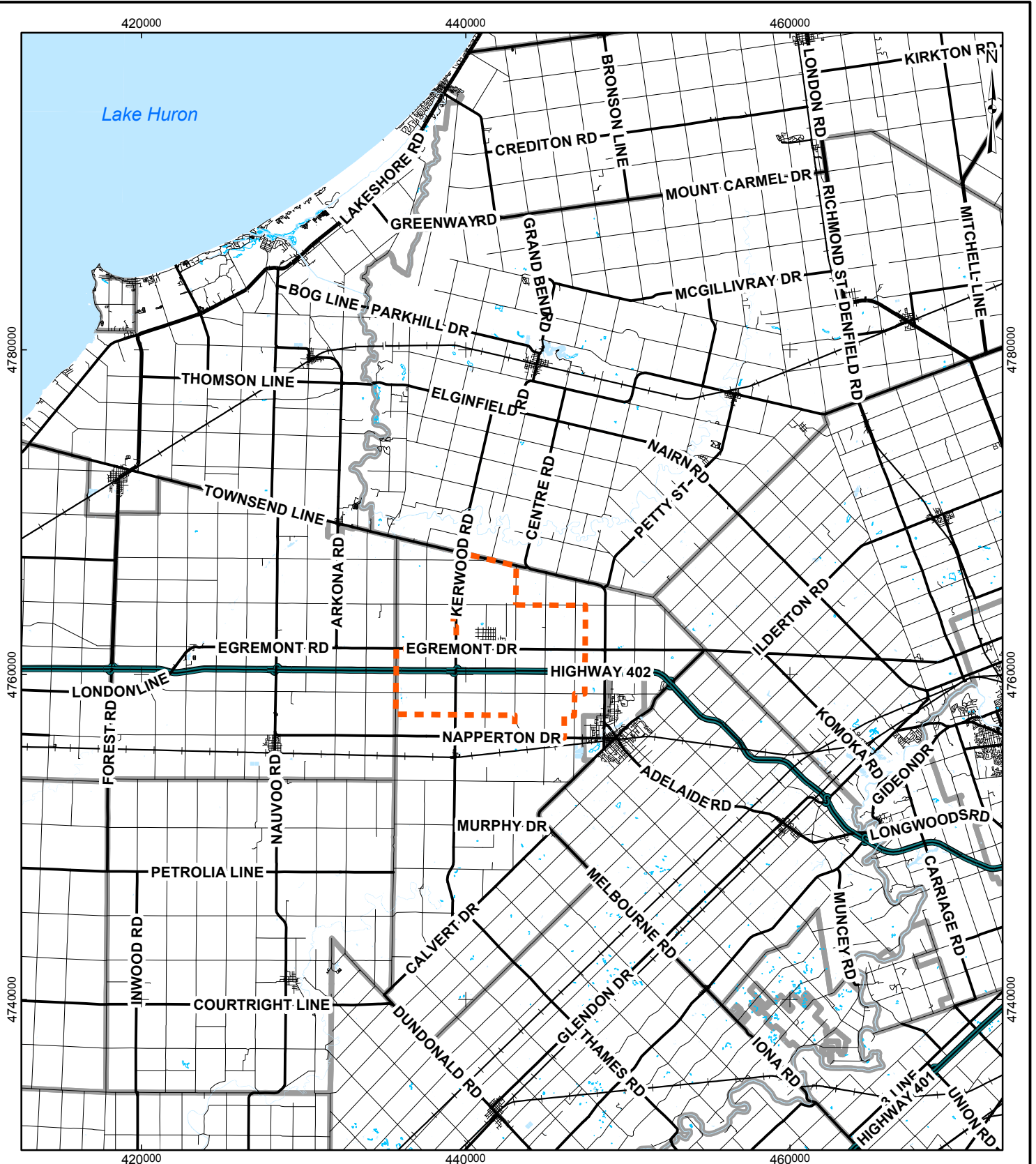


FIGURES

G:\Projects\2007\07-1112-0151 TCI\Adelaide Wind Farm\GIS\MXDs\Draft\February2009\Edits\Report\Project Location85x11.mxd



LEGEND

- Railway
- ▭ Site Study Area
- ▭ Municipal Boundary

REFERENCE

Base Data - MNR NRVIS, obtained 2004, CANMAP v2006.4
 Produced by Golder Associates Ltd under licence from
 Ontario Ministry of Natural Resources, © Queens Printer 2009
 Datum: NAD 83 Projection: UTM Zone 17N

0 2.5 5 10 15 20
Kilometres

PROJECT
ADELAIDE WIND FARM PROJECT

TITLE
PROJECT LOCATION

PROJECT NO. 07-1112-0151	SCALE 1:325,000	REV. 0
DESIGN PP 05 Mar. 2008		
GIS JO 26 Feb. 2009		
CHECK PP 6 Mar. 2009		
REVIEW		

Golder Associates
Mississauga, Ontario

FIGURE: 2.3-1



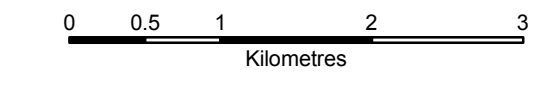
LEGEND

- Layout 27 Turbine - March 5, 2009
- Permanent MET Mast
- Substation
- Overhead Cable
- Underground Cable
- Access Road
- Site Study Area
- Expressway
- Major Road
- Local Road
- Watercourse, Permanent
- Watercourse, Intermittent
- Proposed Laydown / Staging Area
- Optioned Lots - March 5, 2009
- Municipal Boundary
- Waterbody, Permanent
- Wetland, Permanent



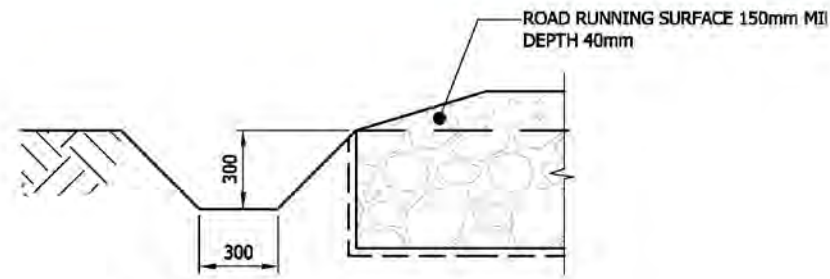
REFERENCE

Base Data - MNR NRVIS, obtained 2004, CANMAP v2006.4
 Produced by Golder Associates Ltd under licence from Ontario Ministry of Natural Resources, © Queens Printer 2009
 Air Photo - Spring 2006 First Base Solutions.
 Datum: NAD 83 Projection: UTM Zone 17N

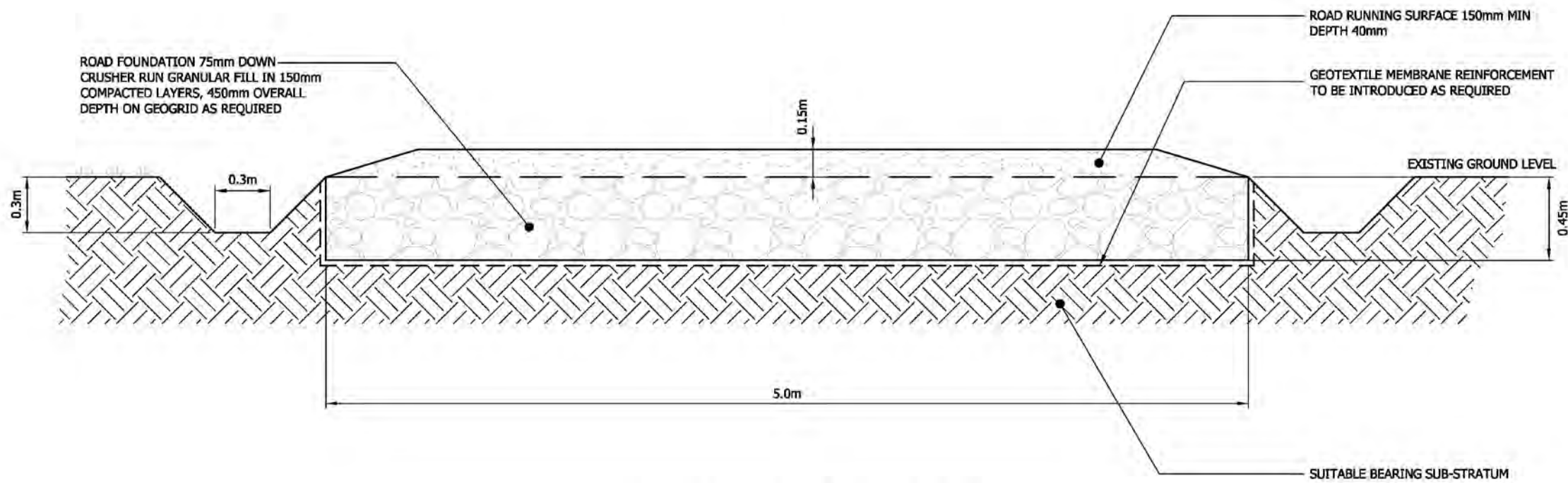


PROJECT		ADELAIDE WIND FARM PROJECT	
TITLE		SITE LAYOUT	
	PROJECT NO.	07-1112-0151	SCALE AS SHOWN
	DESIGN	PP 05 Mar. 2008	REV. 0
	CIS	PP 3 Apr. 2009	
	CHECK	BC 6 Apr. 2009	
	REVIEW		
			FIGURE: 4.3-1

G:\Projects\2007\07-1112-0151 - TCI\Adelaide\WindFarm\GIS\MXDs\Draft\February2009\Edits\Report\SiteLayout.mxd



TYPICAL DITCH CROSS-SECTION



TYPICAL CROSS-SECTION OF PERMANENT ACCESS TRACK

NOTES

1. DETAIL SHOWING PERMANENT ACCESS TRACK.
2. TEMPORARY ACCESS TRACK UP TO 10m WILL BE INSTALLED IF A CRAWLER CRANE IS REQUIRED.
3. TEMPORARY TRACK TO BE REMOVED & PERMANENT TRACK REINSTATED (AS PER DETAIL ABOVE) ON COMPLETION OF WORKS
4. ALL DRAWINGS ARE PRELIMINARY, FOR REFERENCE ONLY & SUBJECT TO FINAL DETAILED DESIGN
5. CULVERTS TO BE INSTALLED AS REQUIRED



Rev	Date	By	Description
A	01/06/09	LJ	First Issue

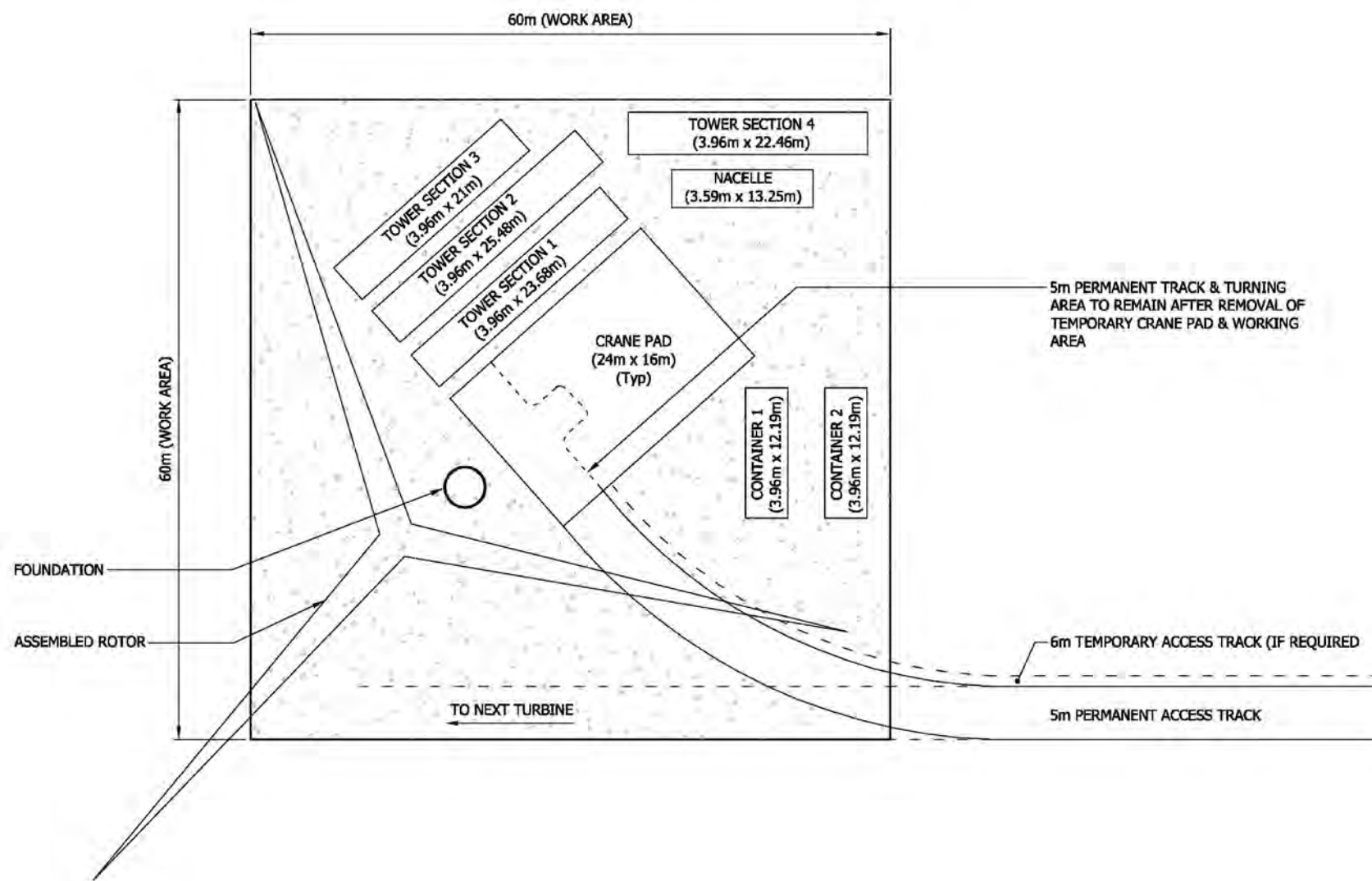
App	Drawing Details
PC	Date: 01/06/09
	Drawn By: LJ
	Scale: 1:25
	Checked: TS
	Approved: BOC

Project:	Adelaide Wind Farm
Proposed Wind Farm With Associated Infrastructure, Adelaide-Metcalf Township, Middlesex County, Ontario	

Title:	Typical Permanent Access Details
Drawing Status: Planning	Drq No: ON0002-P001 Rev: A

PROJECT		ADELAIDE WIND FARM PROJECT		tci renewables	
TITLE		TYPICAL PERMANENT ACCESS ROAD DETAIL			
PROJECT NO. 07-1112-0151		SCALE AS SHOWN		REV. 0	
DESIGN	PP	05 Mar. 2008			
GIS	PP	1 Jun. 2009			
CHECK	LH	2 Jun. 2009			
REVIEW					
Golder Associates Mississauga, Ontario		FIGURE: 4.4-3			

G:\Projects\2007\07-1112-0151 - TC\Adelaide Wind Farm\GIS\MXDs\Drawings\09\Edits\Report\TypicalPermanentAccessRoadDetails.mxd



NOTES

1. DIMENSIONS ARE INDICATIVE & MAY VARY DEPENDENT UPON FINAL CRANE PROCUREMENT.
2. CRANE PAD TO BE REMOVED IF REQUESTED BY LANDOWNER WITHIN 12 MONTHS OF FINAL TURBINE COMMISSIONING



Rev	Date	By	Description
A	02/06/09	LJ	First Issue

App	Drawing Details
PC	Date: 02/06/09
	Drawn By: LJ
	Scale: As Shown
	Checked: TS
	Approved: BOC

Project: Adelaide Wind Farm

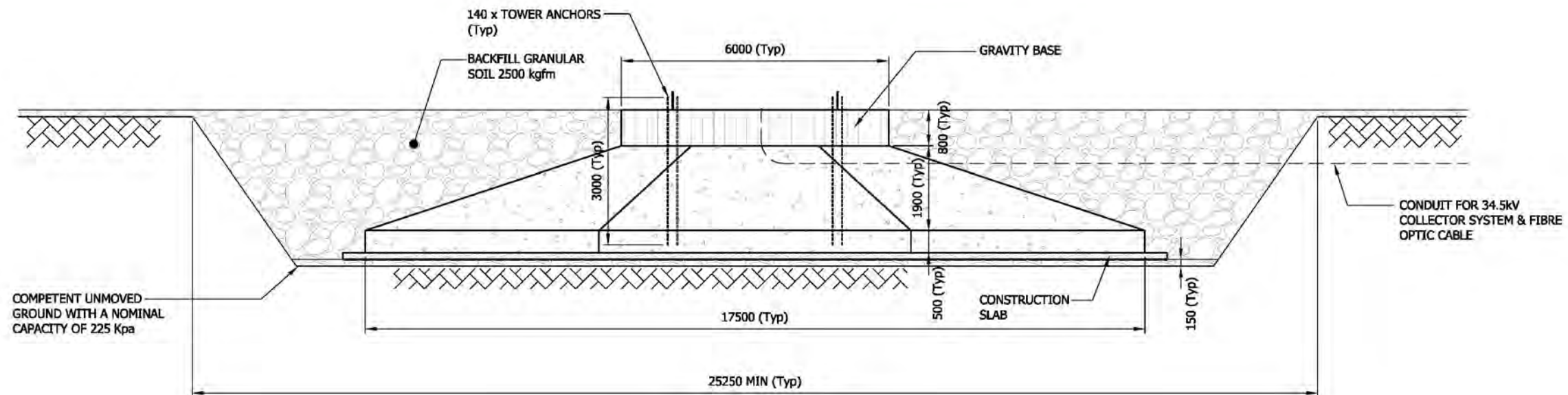
Proposed Wind Farm With Associated Infrastructure,
Adelaide-Metcalf Township, Middlesex County,
Ontario

Title: Indicative Turbine Assembly Schematic

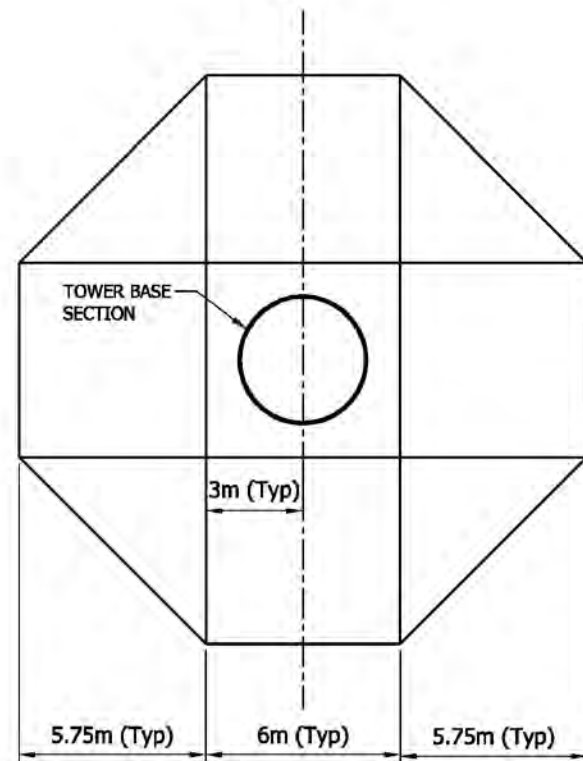
Drawing Status: Planning Drg No: ON0002-P003 Rev: A

PROJECT		ADELAIDE WIND FARM PROJECT		tci renewables	
TITLE		INDICATIVE TURBINE ASSEMBLY SCHEMATIC			
PROJECT NO. 07-1112-0151		SCALE AS SHOWN		REV. 0	
DESIGN	PP	05 Mar. 2008			
GIS	PP	1 Jun. 2009			
CHECK	LH	2 Jun. 2009			
REVIEW					
Golder Associates Mississauga, Ontario		FIGURE: 4.5-1			

G:\Projects\2007\07-1112-0151 - TC\Adelaide Wind Farm\GIS\MXDs\Draft\Febuary2009\Edits\Report\TypicalCraneStandingAreaDetails.mxd



Typical Foundation
1:100



Turbine Foundation Plan
1:200

NOTES

1. ALL DIMENSIONS SUBJECT TO DETAIL DESIGN



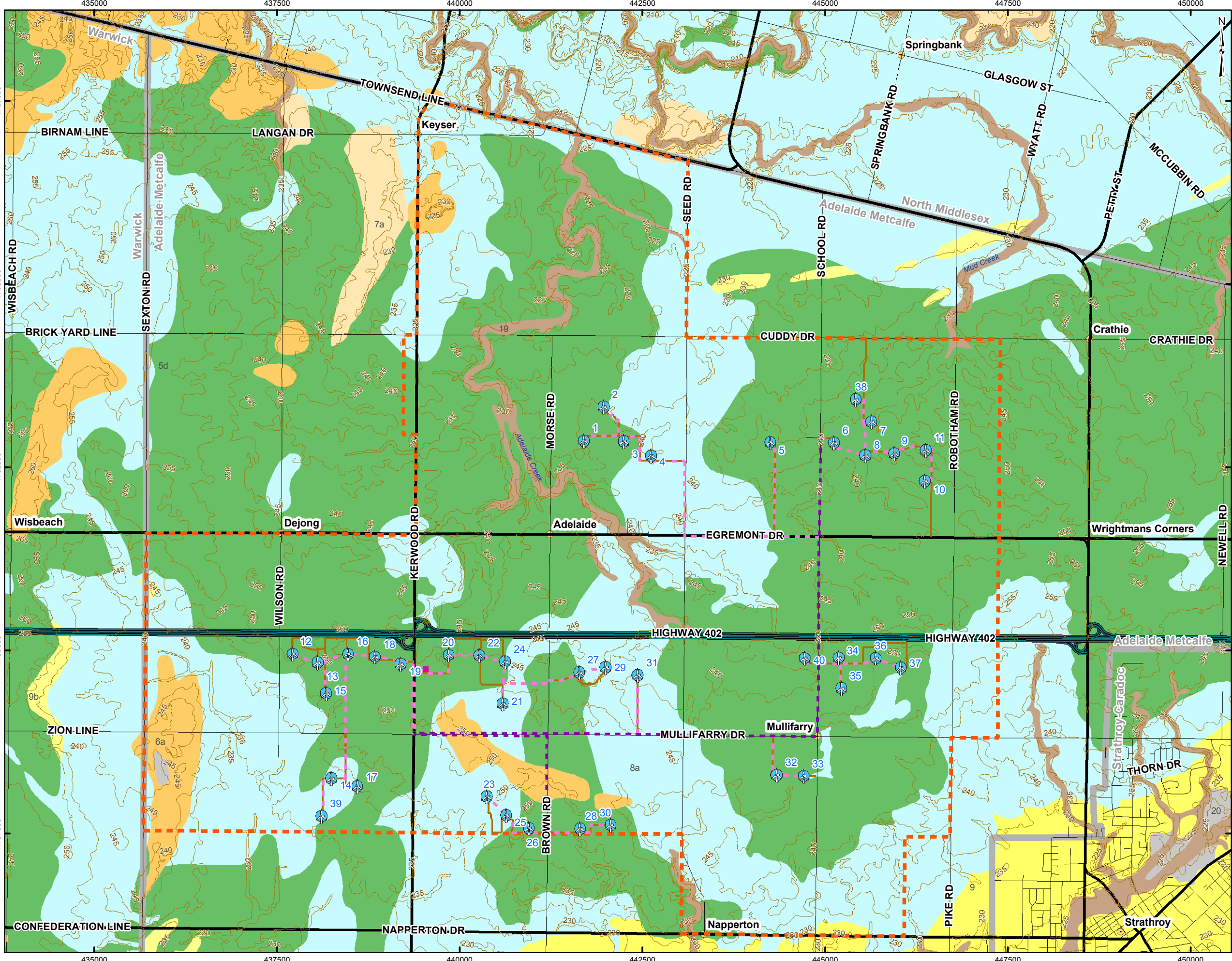
Rev	Date	By	Description
A	02/06/09	LJ	First Issue

App	Drawing Details
PC	Date: 02/06/09
	Drawn By: LJ
	Scale: As Shown
	Checked: TS
	Approved: BOC

Project: **Adelaide Wind Farm**
 Proposed Wind Farm With Associated Infrastructure,
 Adelaide-Metcalf Township, Middlesex County,
 Ontario

Title: **Typical Turbine Foundation Drawing**
 Drawing Status: Planning Drg No: ON0002-P002 Rev: A

PROJECT		ADELAIDE WIND FARM PROJECT		tci renewables	
TITLE		TYPICAL TURBINE FOUNDATION DRAWING			
PROJECT NO. 07-1112-0151		SCALE AS SHOWN		REV. 0	
DESIGN	PP	05 Mar. 2008			
GIS	PP	1 Jun. 2009			
CHECK	LH	2 Jun. 2009			
REVIEW					
Golder Associates Mississauga, Ontario		FIGURE: 4.5-2			



LEGEND

- Layout 27 Turbine - March 5, 2009
- Overhead Cable
- Underground Cable
- Access Road
- Contour (masl)
- Substation
- Site Study Area
- Expressway
- Major Road
- Local Road
- Municipal Boundary

Surficial Geology

- 5b: Stone-poor, sandy silt to silty sand-textured till on Paleozoic terrain
- 5d: Clay to silt-textured till (derived from glaciolacustrine deposits or shale)
- 6a: Ice-contact stratified deposits: sand and gravel, minor silt, clay and till in moraines, eskers, kames and crevasse fills
- 7a: Glaciofluvial deposits: braided river deposits and delta topset facies - Sandy deposits
- 7b: Glaciofluvial deposits: braided river deposits and delta topset facies - Gravelly deposits
- 8a: Massive-well laminated fine-textured glaciolacustrine deposits
- 9: Coarse-textured glaciolacustrine deposits: sand, gravel, minor silt and clay
- 9b: Coarse-textured glaciolacustrine deposits: sand, gravel, minor silt and clay Littoral foreshore deposits
- 19: Modern alluvial deposits: clay, silt, sand, gravel, may contain organic remains
- 20: Organic deposits: peat, muck, marl



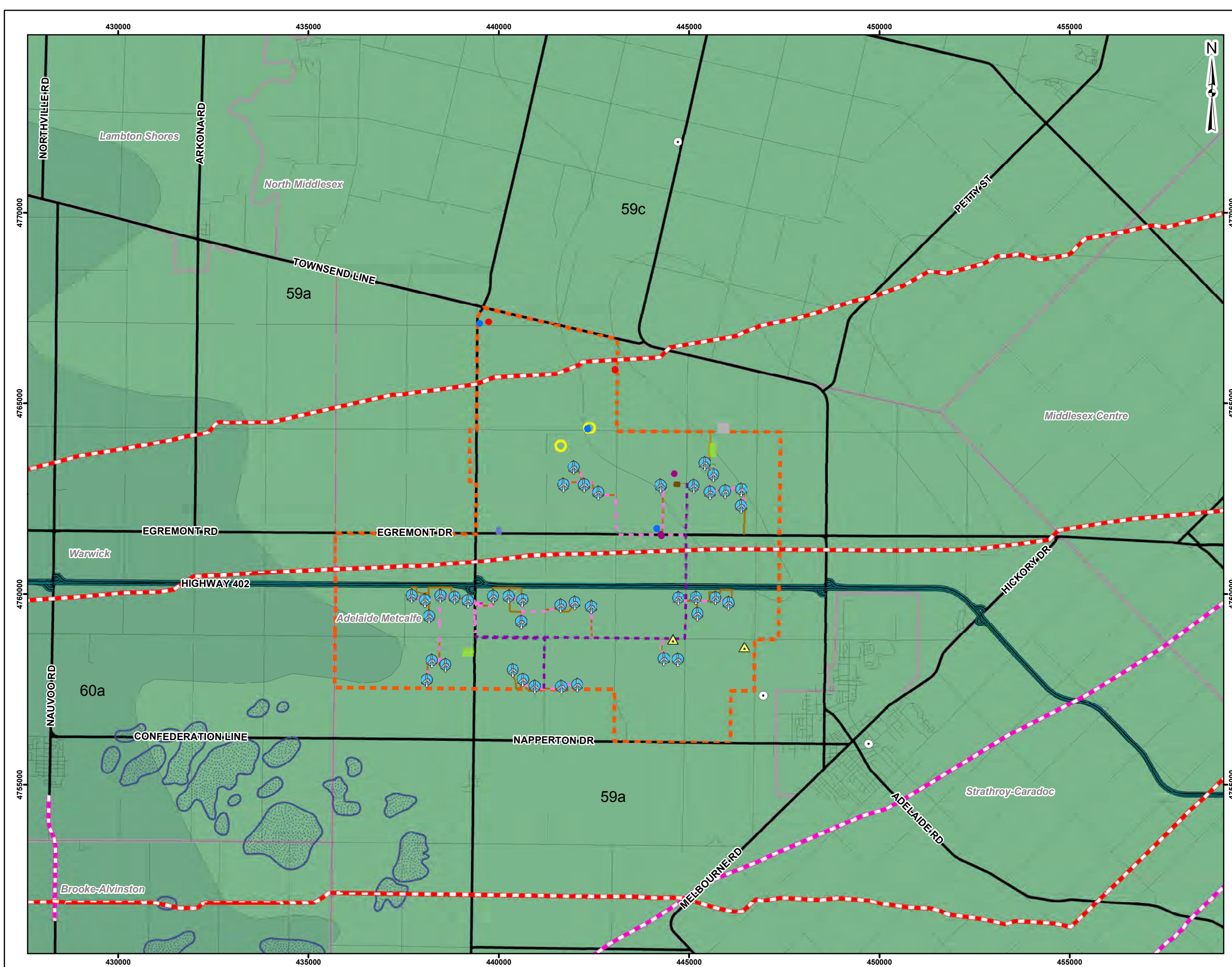
REFERENCE

Base Data - MNR NRVIS, obtained 2004, CANMAP v2006.4
 Ontario Geological Survey 2003. Surficial geology of Southern Ontario; Ontario Geological Survey, Miscellaneous Release-Data 128.
 Produced by Golder Associates Ltd. under Licence with the Ontario Ministry of Northern Development and Mines © Queen's Printer for Ontario, 2009
 Produced by Golder Associates Ltd under licence from Ontario Ministry of Natural Resources. © Queen's Printer 2006 Datum: NAD 83 Projection: UTM Zone 17N

PROJECT		ADELAIDE WIND FARM PROJECT	
TITLE			
SURFICIAL GEOLOGY			
	PROJECT NO.	07-1112-0151	SCALE AS SHOWN
	DESIGN	PP 05 Mar. 2008	REV. 0
	CIS	JO 2 Mar. 2009	
	CHECK	JF 2 Mar. 2009	
	REVIEW	2 Mar. 2009	

FIGURE: 7.1-1

G:\Projects\2007\07-1112-0151 - TCI\Adelaide\WindFarm\GIS\MXD\Surficial\Report\SurficialGeology1x17.mxd



LEGEND

Natural Resources

- Gas Exploration
- Oil Exploration
- Oil Well
- Limestone Quarry (Past Producing)
- Salt (Occurrence)
- Natural Gas Pipeline
- Oil Pipeline
- Oil Pool

Potential Sources of Contamination

- Oil Tank
- Auto Wrecker
- Domestic Waste Facility

Bedrock

- 60a: Shale \ Kettle Point Fm.
- UPPER DEVONIAN
- 59a: Limestone, Dolostone, Shale \ Hamilton Gp.
- MIDDLE DEVONIAN
- 59c: Limestone, Dolostone, Shale \ Dundee Fm.
- MIDDLE DEVONIAN

On-Site Features

- Layout 27 Turbine - March 5, 2009
- Communication Tower
- Substation
- Overhead Cable
- Underground Cable
- Access Road
- Proposed Laydown / Staging Area
- Site Study Area

Base Data

- Expressway
- Major Road
- Local Road
- Municipal Boundary



REFERENCE

Base Data - MNR NRVIS, obtained 2004, CANMAP v2006.4
 Oil and Gas Data - Ontario Oil, Gas & Salt Resources Library, obtained 2005
 Bedrock Geology Data, obtained 2002
 Produced by Golder Associates Ltd under licence from Ontario Ministry of Natural Resources, © Queens Printer 2009
 Datum: NAD 83 Projection: UTM Zone 17N



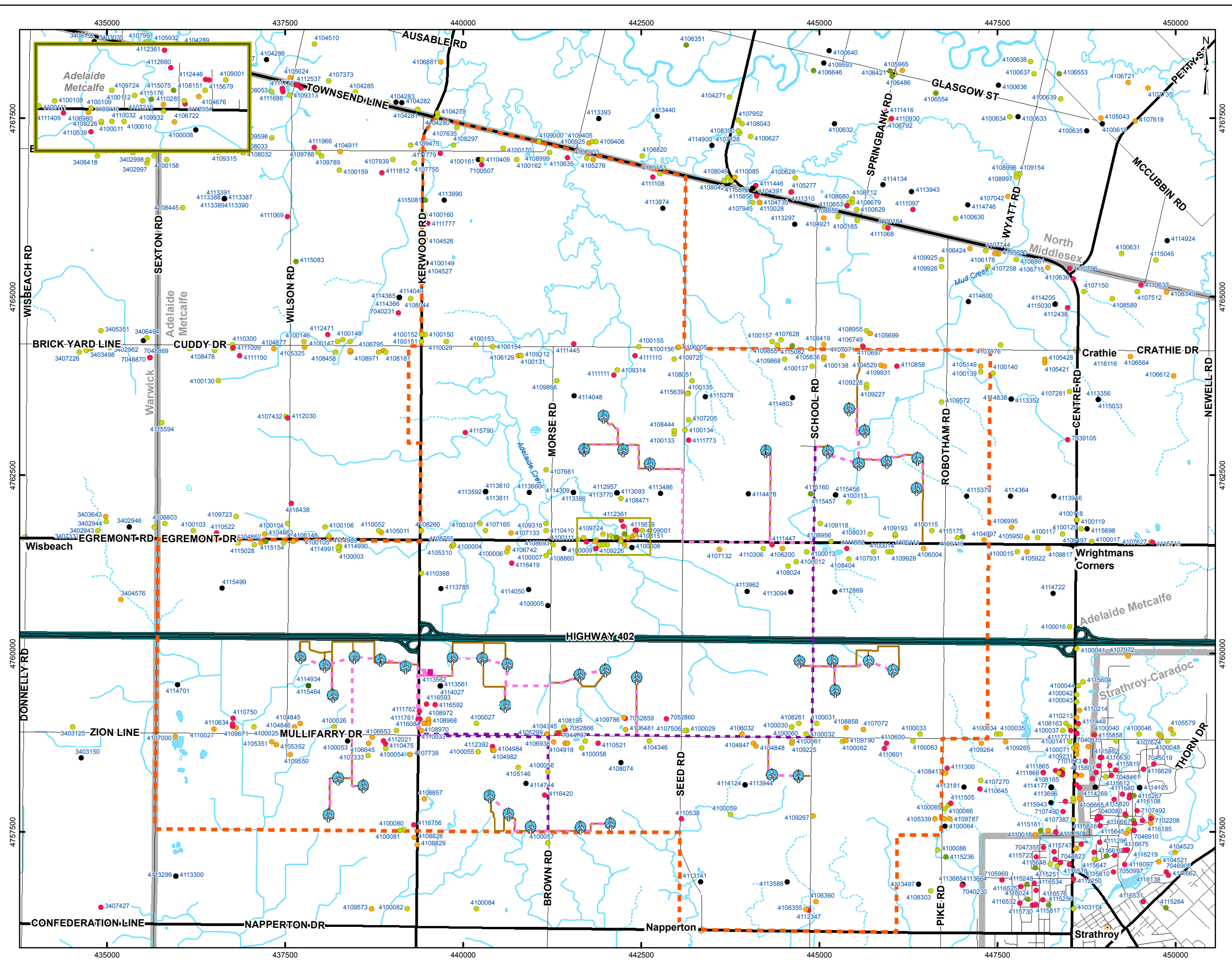
PROJECT
ADELAIDE WIND FARM PROJECT

TITLE
SSA BEDROCK GEOLOGY, NATURAL RESOURCE FEATURES AND POTENTIAL SOURCES OF CONTAMINATION

	PROJECT NO.	07-1112-0151	SCALE AS SHOWN	REV. 0
	DESIGN	PP	05 Mar. 2008	
	C/S	PP	3 Apr. 2009	
	CHECK	BC	6 Apr. 2009	
	REVIEW			

FIGURE: 7.1-2

G:\Projects\2007\07-1112-0151 - TCI\Adelaide\WindFarm\GIS\MXD\Drift\February2009\Edits\Report\HydroGeoResources.mxd



LEGEND

- Margin of error: 3 - 10 m
- Margin of error: 10 - 30 m
- Margin of error: 30 - 100m
- Margin of error: 100 - 300m
- Margin of error: 300 - 1km
- Margin of error: 1km 10km
- Unknown UTM
- ⊙ Layout 27 Turbine - March 5, 2009
- Substation
- Overhead Cable
- Underground Cable
- Access Road
- Site Study Area
- Expressway
- Major Road
- Local Road
- Watercourse, Permanent
- Watercourse, Intermittent
- Waterbody, Permanent
- Wetland, Permanent
- Municipal Boundary

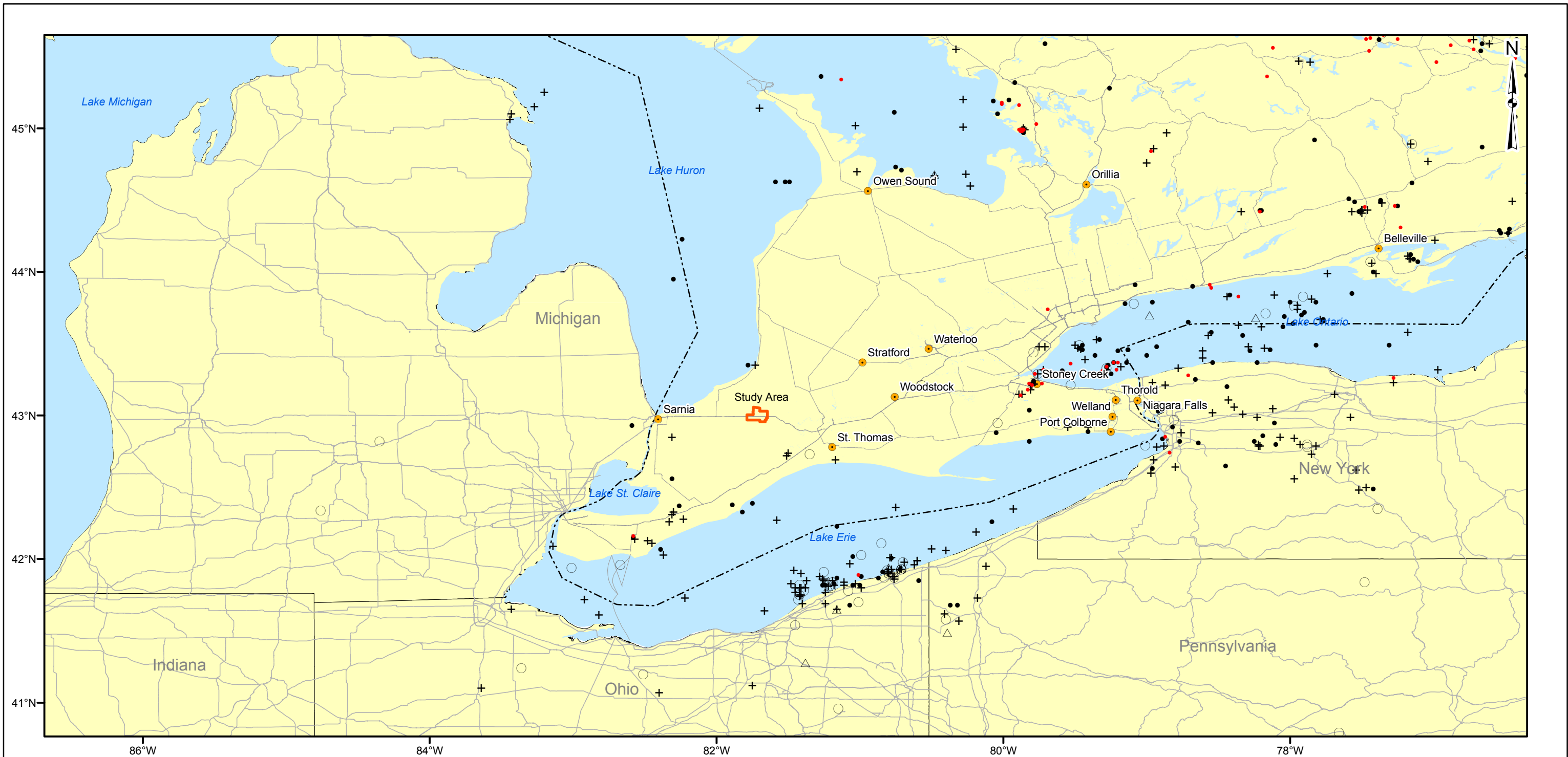


REFERENCE

Base Data - MNR NRVIS, obtained 2004, CANMAP v2006.4
 Produced by Golder Associates Ltd under licence from Ontario Ministry of Natural Resources, © Queens Printer 2009
 Water Well data - MOE, obtained 2008
 Datum: NAD 83 Projection: UTM Zone 17N

PROJECT		ADELAIDE WIND FARM PROJECT		
TITLE		MOE WATER WELLS		
	PROJECT NO.	07-1112-0151	SCALE AS SHOWN	REV. 0
	DESIGN	PP 05 Mar 2008		
	CIS	JO 02 Mar 2009		
	CHECK	JF 02 Mar 2009		
REVIEW	02 Mar 2009	FIGURE: 7.1-3		

G:\Projects\2007\07-1112-0151_TCI\AdelaideWindFarm\CIS\MXD\Drawings\February2009\Edits\Report\MOEWaterWells1x17.mxd



G:\Projects\2007\07-1112-0151 TC\AdeleideWindFarm\GIS\MXDs\Draft\February2009\Edits\Report\Seismicity.mxd



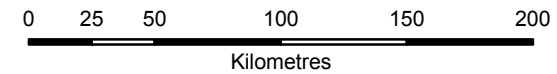
LEGEND

Earthquake Magnitude

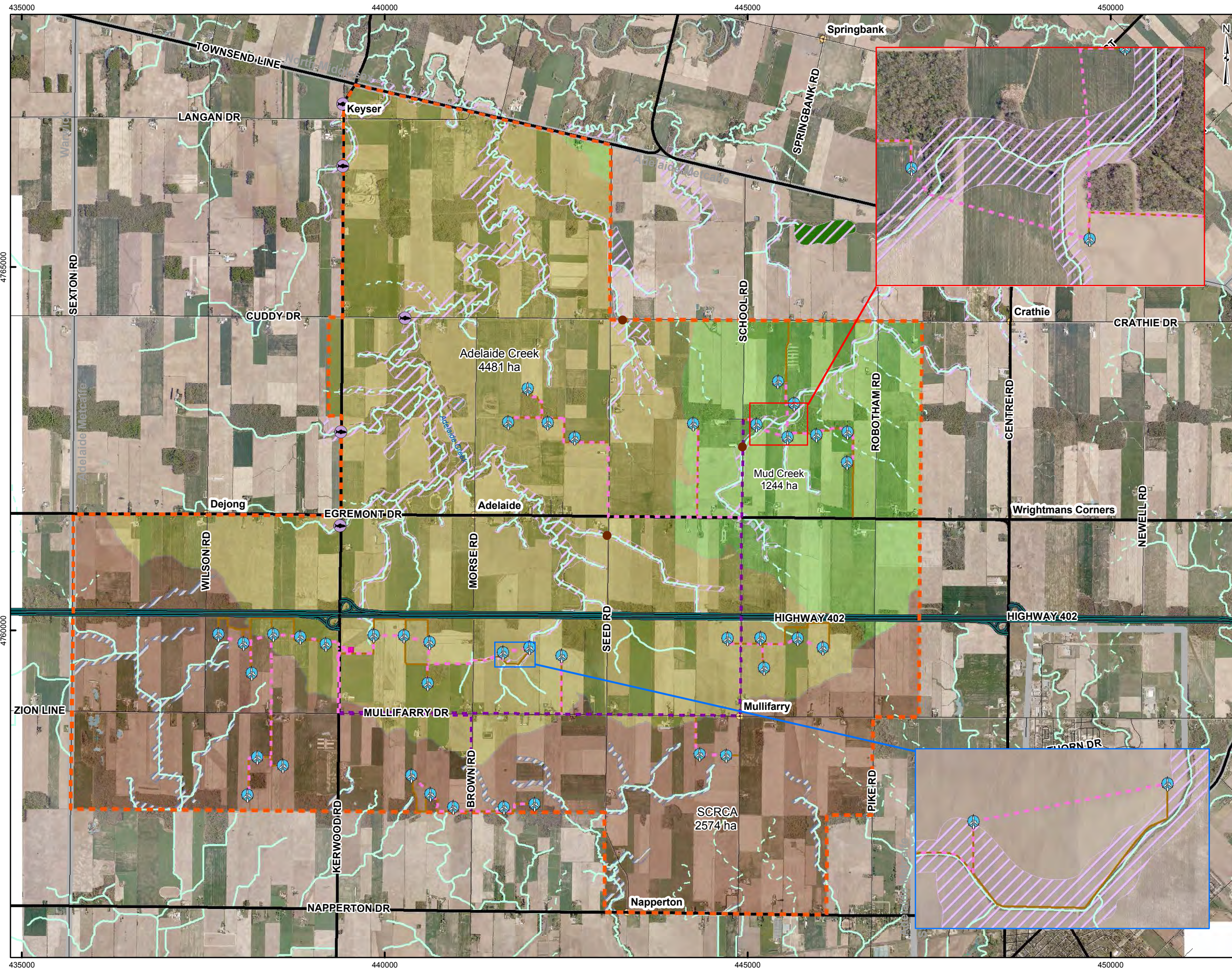
- 0.30 - 1.50
- 1.51 - 2.10
- + 2.11 - 2.80
- 2.81 - 3.60
- △ 3.61 - 5.20
- ▭ Study Area

REFERENCE

Seismicity Distribution - Natural Resources Canada National Earthquake Database, 2008 and USGS Database, 2008.
 Base Data - Produced by Golder Associates Ltd under licence from Ontario Ministry of Natural Resources, © Queens Printer 2009
 Datum: GCS North American 1983



PROJECT		TCI RENEWABLES-75 MW WIND FARM ENVIRONMENTAL ASSESSMENT		
TITLE				
SEISMICITY OF SOUTHWESTERN ONTARIO ALL EVENTS THROUGH 2008				
	PROJECT NO.	07-1112-0151	SCALE:	AS SHOWN
	DESIGN	ASB	03 Aug. 2006	Ver. 1.0
	GIS	PP	2 Mar. 2009	FIGURE: 7.1-4
	CHECK	JF	2 Mar. 2009	
REVIEW				



LEGEND

- ABCA Fisheries Locations
- Golder Habitat Survey Locations
- Layout 27 Turbine - March 5, 2009
- Substation
- Overhead Cable
- Underground Cable
- Access Road
- Expressway
- Major Road
- Local Road
- Watercourse, Permanent
- Watercourse, Intermittent
- Waterbody, Permanent
- Wetland, Permanent
- Site Study Area
- ABCA Regulation Limit
- Provincially Significant Wetland
- SCRCA Draft Regulation Limit
- Sydenham River Catchment Area
- Adelaide Creek Catchment Area
- Mud Creek Catchment Area



REFERENCE

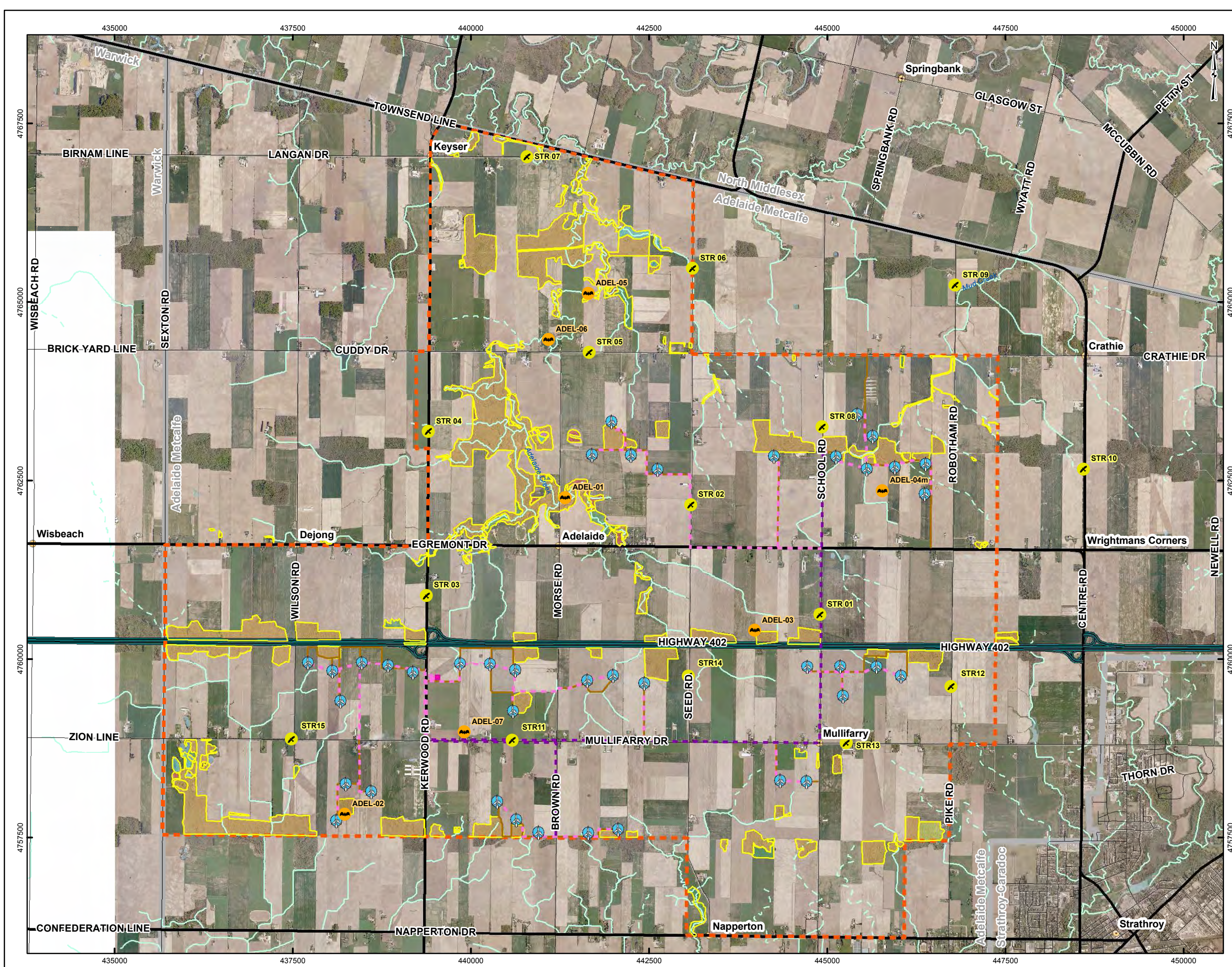
Base Data - MNR NRVIS, obtained 2004, CANMAP v2006.4
 Produced by Golder Associates Ltd under licence from Ontario Ministry of Natural Resources, © Queens Printer 2009
 SCRCA Regulation Limit - DRAFT ONLY - Digitized based on SCRCA Mapping, obtained February 2009
 ABCA Regulation Limit - ABCA, obtained October 2008
 Datum: NAD 83 Projection: UTM Zone 17N



PROJECT			
ADELAIDE WIND FARM PROJECT			
TITLE			
AQUATIC ENVIRONMENT			
 Mississauga, Ontario	PROJECT NO. 07-1112-0151	SCALE AS SHOWN	REV. 0
	DESIGN PP 05 Mar. 2008		
	GIS PP 3 Apr. 2009		
	CHECK BC 6 Apr. 2009		
	REVIEW		

FIGURE: 7.2-1

G:\Projects\2007\07-1112-0151 - TCI\Adelaide\WindFarm\GIS\MXDs\Draft\February2009\Edits\Report\Aquatic\11x17.mxd



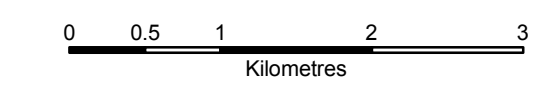
LEGEND

- Bat Station
- Bird Station
- Layout 27 Turbine - March 5, 2009
- Overhead Cable
- Underground Cable
- Access Road
- Substation
- Expressway
- Major Road
- Local Road
- Watercourse, Permanent
- Watercourse, Intermittent
- Site Study Area
- CUM - Cultural Meadow
- CUP - Cultural Plantation
- CUT - Cultural Thicket
- FOC - Coniferous Forest
- FOD - Deciduous Forest
- FOM - Mixed Forest
- SAS - Submerged Shallow Aquatic
- SWD - Deciduous Swamp
- SWT - Thicket Swamp
- Municipal Boundary
- Waterbody, Permanent
- Wetland, Permanent



REFERENCE

Base Data - MNR NRVIS, obtained 2004, CANMAP v2006.4
 Produced by Golder Associates Ltd under licence from Ontario Ministry of Natural Resources, © Queens Printer 2009
 Air Photo - Spring 2006 First Base Solutions
 Datum: NAD 83 Projection: UTM Zone 17N



PROJECT		ADELAIDE WIND FARM PROJECT	
TITLE			
TERRESTRIAL ENVIRONMENT			
 Mississauga, Ontario	PROJECT NO. 07-1112-0151	SCALE AS SHOWN	REV. 0
	DESIGN PP 05 Mar. 2008		
	CIS PP 3 Apr. 2009		
	CHECK BC 6 Apr. 2009		
			FIGURE: 7.3-1

G:\Projects\2007\07-1112-0151_TCI\AdelaideWindFarm\GIS\MXD\Draft\February2009\Edits\Report\Terrestrial11x17.mxd



STRATHROY TELECOM TOWER ON HIGHWAY 81 BEHIND MOTEL AT 2ND STREET. TAKEN FROM HIGHWAY 81 LOOKING EAST BEHIND MOTEL




PROJECT		ADELAIDE WIND FARM PROJECT			
TITLE					
STRATHROY TELECOM TOWER					
PROJECT NO. 07-1112-0151		SCALE AS SHOWN		REV. 0	
DESIGN	PP	20 Jun. 2008			
GIS	PP	24 Mar. 2009			
CHECK					
REVIEW					



FIGURE: 7.6-1





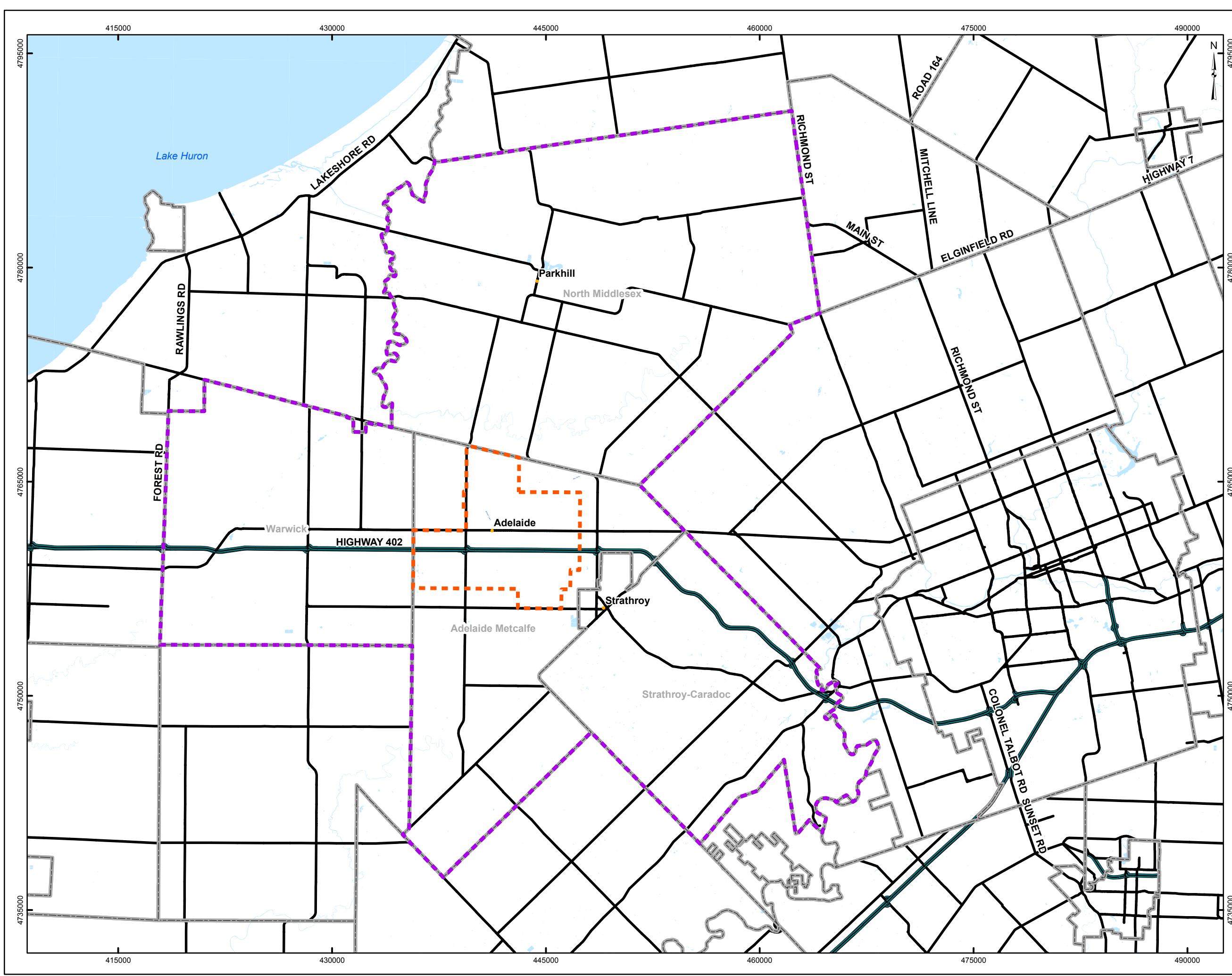
TAKEN FROM KATESVILLE DRIVE EAST OF KERWOOD - LOOKING EAST

PROJECT			
ADELAIDE WIND FARM PROJECT			
TITLE			
TRANSMISSION LINES AND TOWERS			
		PROJECT NO. 07-1112-0151	SCALE AS SHOWN REV. 0
DESIGN	PP	20 Jun. 2008	FIGURE: 7.6-2
GIS	PP	24 Mar. 2009	
CHECK			
REVIEW			



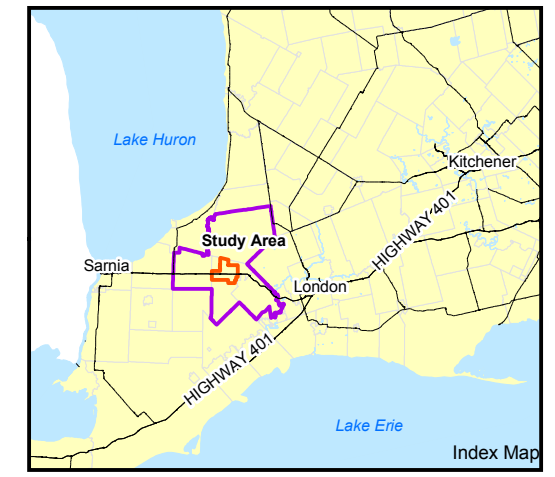
TAKEN FROM KATESVILLE DRIVE EAST OF KERWOOD - LOOKING EAST

PROJECT			
ADELAIDE WIND FARM PROJECT			
TITLE			
TRANSMISSION LINES AND TOWERS			
		PROJECT NO. 07-1112-0151	SCALE AS SHOWN REV. 0
DESIGN	PP	7 May, 2009	FIGURE: 7.6-3
GIS	PP	7 May, 2009	
CHECK			
REVIEW			



LEGEND

- Municipal Boundary
- Expressway
- Major Road
- Local Study Area
- Site Study Area
- Water Area, Permanent



REFERENCE

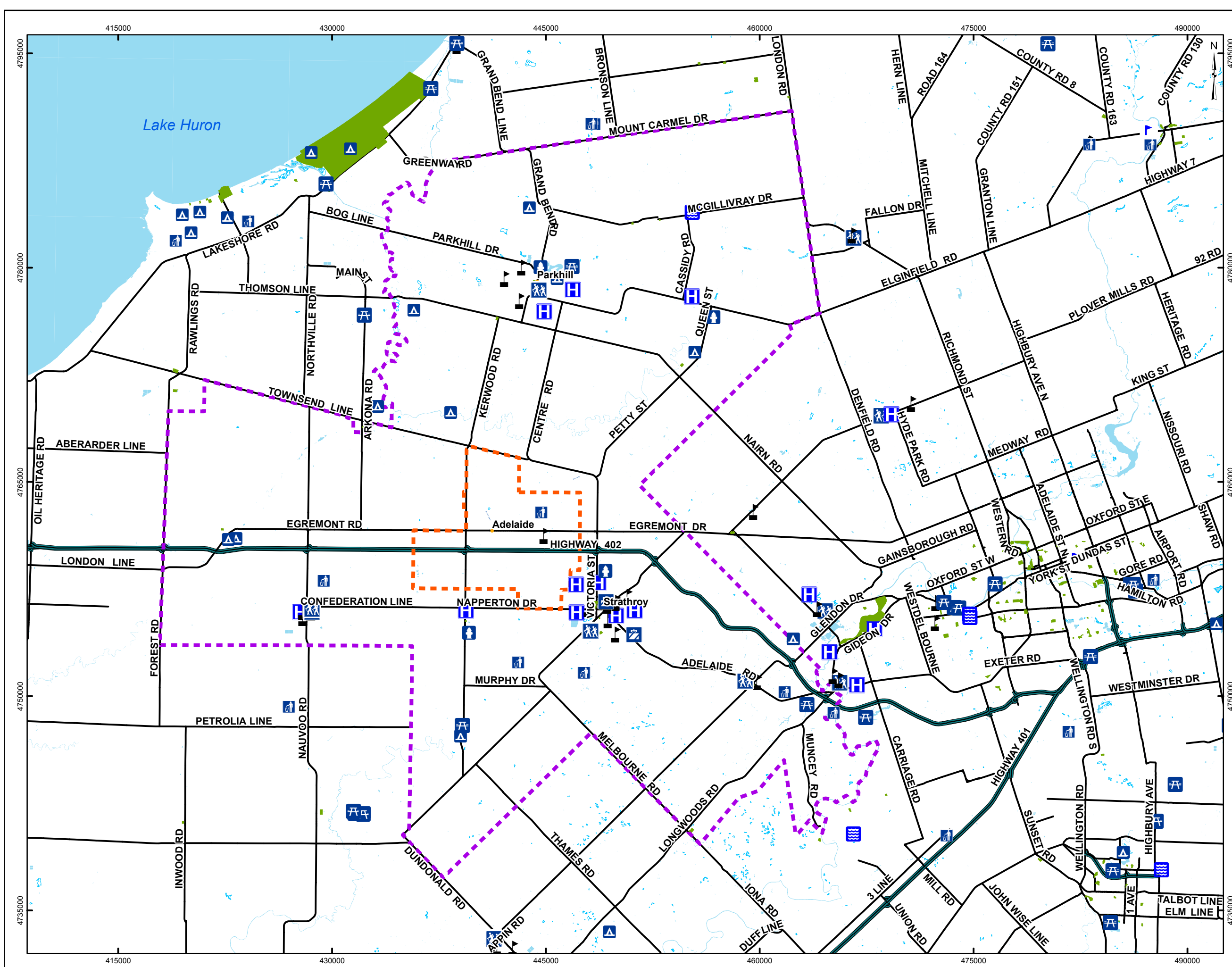
Base Data - MNR NRVIS, obtained 2004, CANMAP v2006.4
 Produced by Golder Associates Ltd under licence from Ontario Ministry of Natural Resources. © Queens Printer 2009
 Datum: NAD 83 Projection: UTM Zone 17N



PROJECT		ADELAIDE WIND FARM PROJECT	
TITLE			
SOCIO-ECONOMIC LOCAL STUDY AREA			
	PROJECT NO.	07-1112-0151	SCALE AS SHOWN
	DESIGN	PP 05 Mar. 2008	REV. 0
	CIS	ME 13 Feb. 2009	
	CHECK	PP 6 Mar. 2009	
	REVIEW		

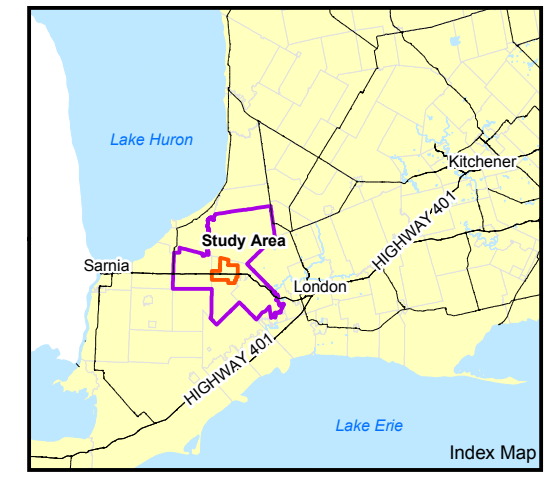
FIGURE: 7.7-1

G:\Projects\2007\07-1112-0151 - TCI\Adelaide\WindFarm\GIS\MXDs\Draft\February2009\Edits\Reports\socio_ec_local_study_area.mxd



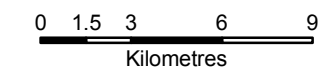
LEGEND

- Stadium
- Water Reservoir
- Picnic Area
- Campground
- Landfill
- School
- Fire Station
- Hospital/EMS
- Recreation and Entertainment
- Shopping and Services
- Expressway
- Major Road
- Local Study Area
- Site Study Area
- Park
- Water Area, Permanent
- Wetland, Permanent



REFERENCE

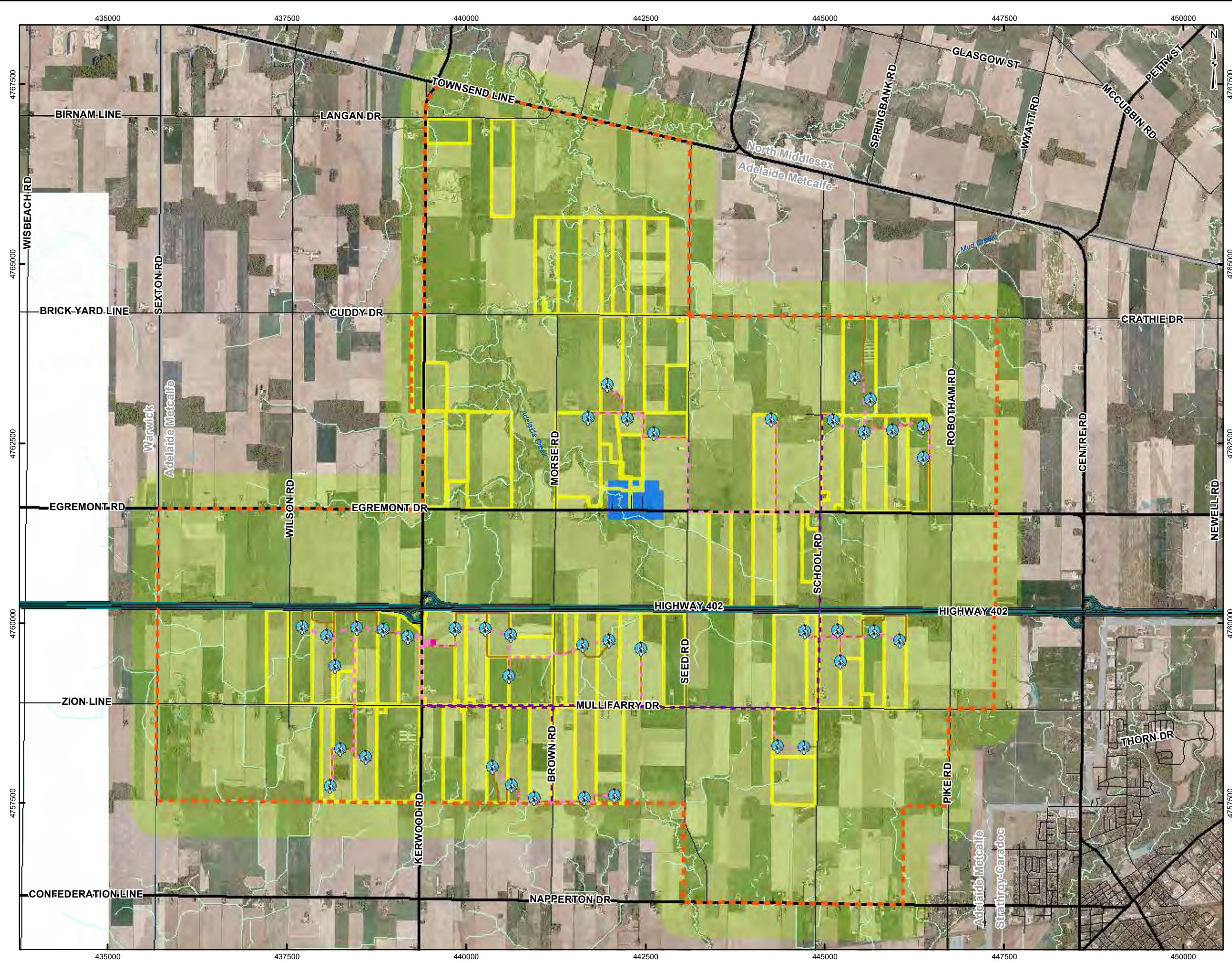
Base Data - MNR NRVIS, obtained 2004, CANMAP v2006.4
 Produced by Golder Associates Ltd under licence from Ontario Ministry of Natural Resources, © Queens Printer 2009
 Datum: NAD 83 Projection: UTM Zone 17N



PROJECT		ADELAIDE WIND FARM PROJECT	
TITLE			
LOCAL STUDY AREA SERVICES AND INFRASTRUCTURE			
 Mississauga, Ontario	PROJECT NO. 07-1112-0151	SCALE AS SHOWN	REV. 0
	DESIGN PP 05 Mar. 2008		
	CIS ME 18 Feb. 2009		
	CHECK PP 6 Mar. 2009		
	REVIEW		
			FIGURE: 7.7-2

G:\Projects\2007\07-1112-0151_TCI\AdelaideWindFarm\GIS\MXDs\Draft\February2009\Edits\Report\lisa_services_infrastructure.mxd

G:\Projects\2007\07-1112-0151\TCI\Adelaide Wind Farm\GIS\MXDs\Draft\February2009\Edits\Report\LandUse.mxd

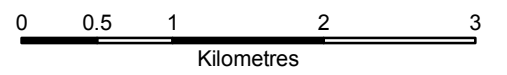


- LEGEND**
- Layout 27 Turbine - March 5, 2009
 - Overhead Cable
 - Underground Cable
 - Access Road
 - Substation
 - Expressway
 - Major Road
 - Local Road
 - Watercourse, Permanent
 - Watercourse, Intermittent
 - Site Study Area
 - Optioned Lots - March 5, 2009
 - Residential
 - Agriculture
 - Municipal Boundary
 - Waterbody, Permanent
 - Wetland, Permanent

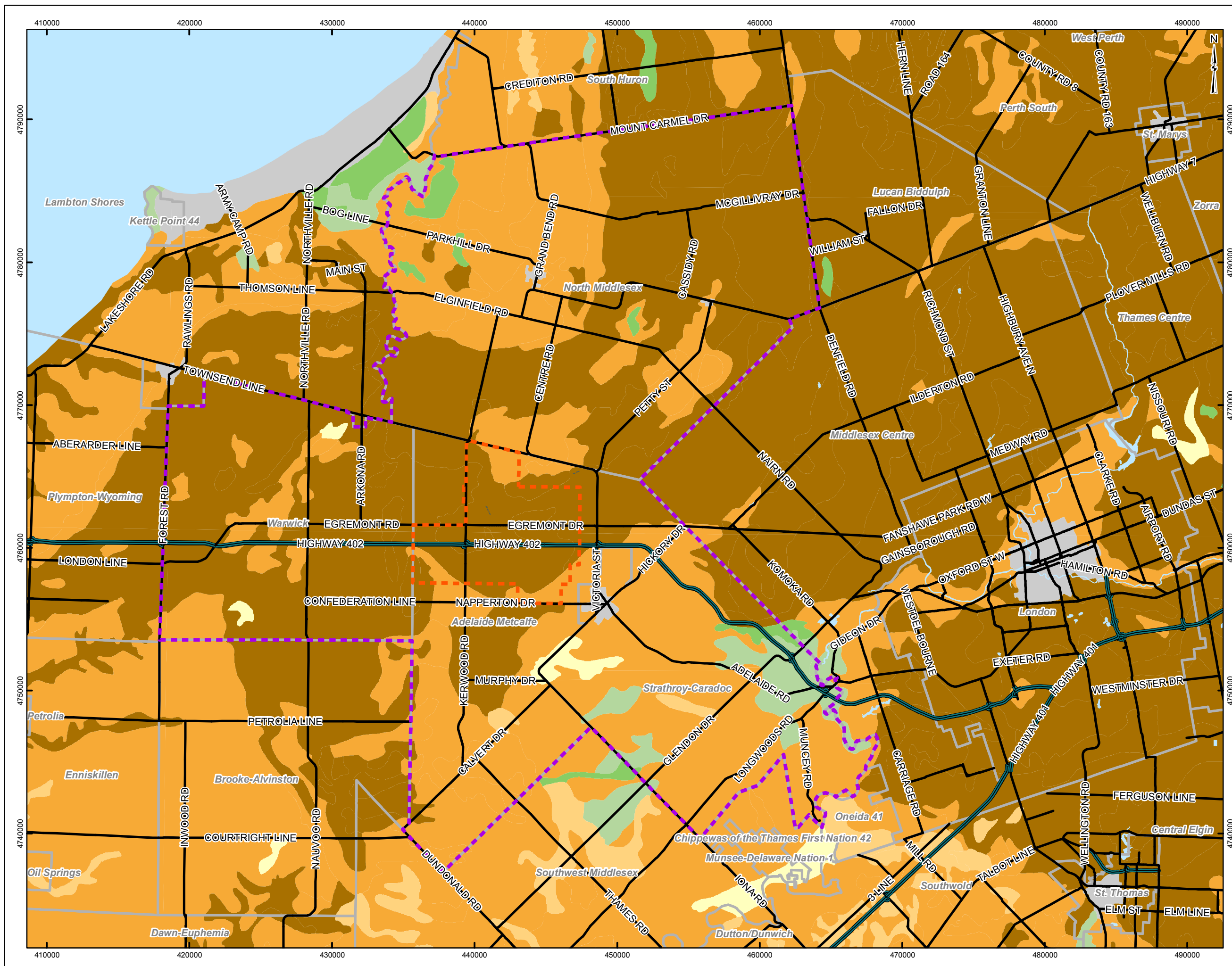


REFERENCE

Base Data - MNR NRVIS, obtained 2004, CANMAP v2006.4
 Produced by Golder Associates Ltd under licence from Ontario Ministry of Natural Resources, © Queens Printer 2009
 Air Photo - Spring 2006 First Base Solutions.
 Land Use - Middlesex County.
 Datum: NAD 83 Projection: UTM Zone 17N



PROJECT		ADELAIDE WIND FARM PROJECT		
TITLE		LAND USE WITHIN 500 M OF THE SITE STUDY AREA		
	PROJECT NO.	07-1112-0151	SCALE AS SHOWN	REV. 0
	DESIGN	PP	05 Mar. 2008	
	GIS	JO	13 Feb. 2009	
	CHECK	PP	6 Mar. 2009	
FIGURE: 7.9-1				



LEGEND

- Expressway
- Major Road
- Site Study Area
- Local Study Area
- Waterbody
- Municipal Boundary

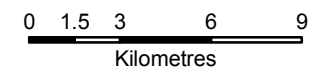
Land Capability For Agriculture

- Class 1 Soils in this class have no significant limitations in use for crops
- Class 2 Soils in this class have moderate limitations that restrict the range of crops or require moderate conservation practices.
- Class 3 Soils in this class have moderately severe limitations that restrict the range of crops or require special conservation practices.
- Class 4 Soils in this class have severe limitations that restrict the range of crops or require special conservation practices.
- Class 5 Soils in this class have very severe limitations that restrict their capability in producing perennial forage crops, and improvement practices are feasible.
- Class 6 Soils in this class are capable only of producing perennial forage crops, and improvement practices are not feasible.
- Class 7 Soils in this class have no capacity for arable culture or permanent pasture.
- Class O Organic Soils (not placed in capability classes).



REFERENCE

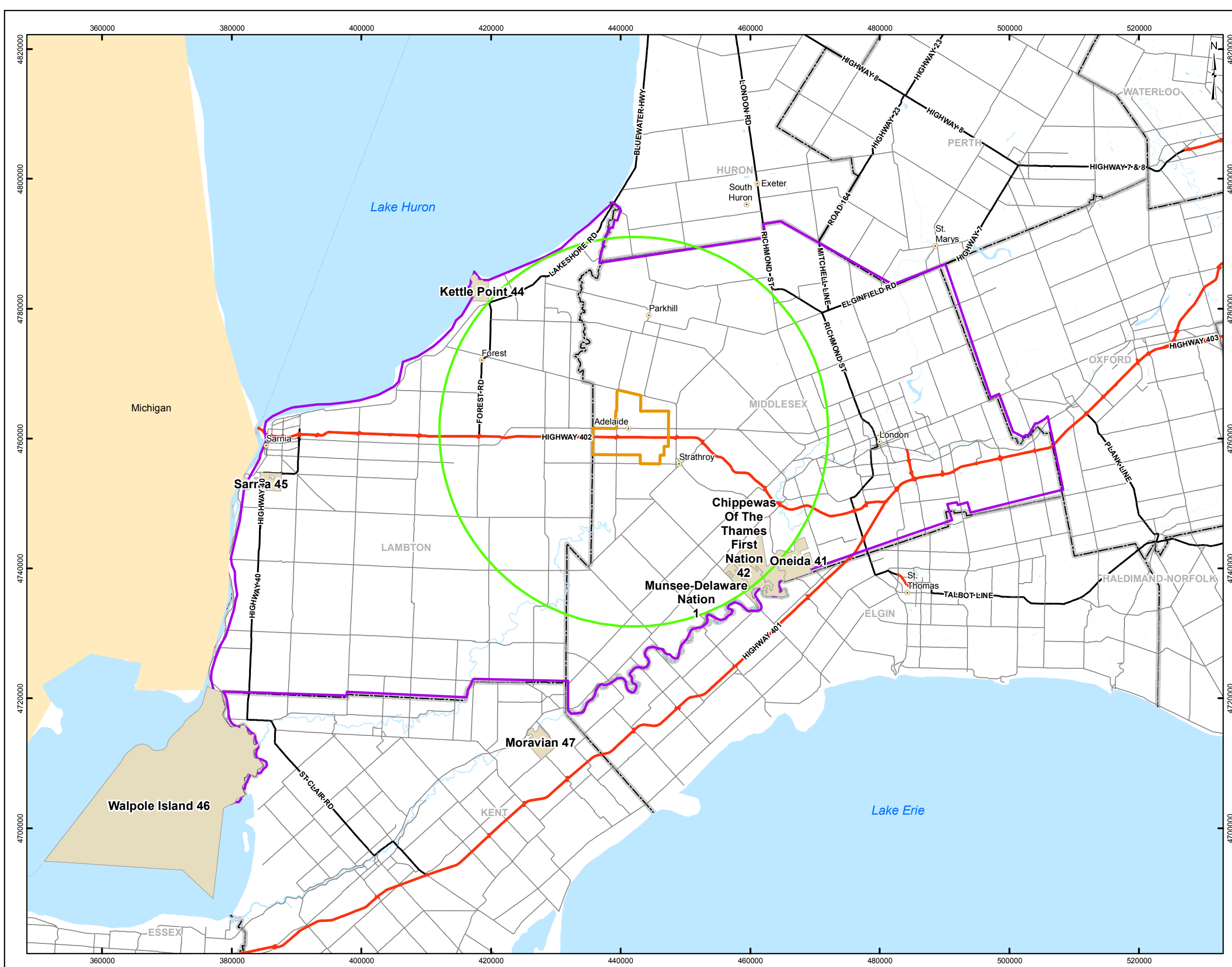
Base Data - MNR NRVIS, obtained 2004, CANMAP v2006.4
 Produced by Golder Associates Ltd under licence from Ontario Ministry of Natural Resources, © Queens Printer 2009
 Land Capability Data - The Canada Land Inventory
 Datum: NAD 83 Projection: UTM Zone 17N



PROJECT		ADELAIDE WIND FARM PROJECT	
TITLE		LAND CAPABILITY FOR AGRICULTURE IN THE LOCAL STUDY AREA	
	DESIGN	PP	05 Mar. 2008
	CHECK	PP	17 Feb. 2009
	REVIEW		06 Mar. 2009
	SCALE AS SHOWN		REV. 0

FIGURE: 7.9-2

G:\Projects\2007\07-112-0151\TCI\Adelaide\WindFarm\GIS\MXDs\Drain\February2009\Edits\Report\LandCapability.mxd



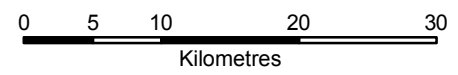
LEGEND

- Community
- Highway
- Principal Highway
- Secondary Highway
- Major Road
- Regional Study Area
- Local Study Area
- Project Area
- First Nations
- County Boundary
- Waterbody



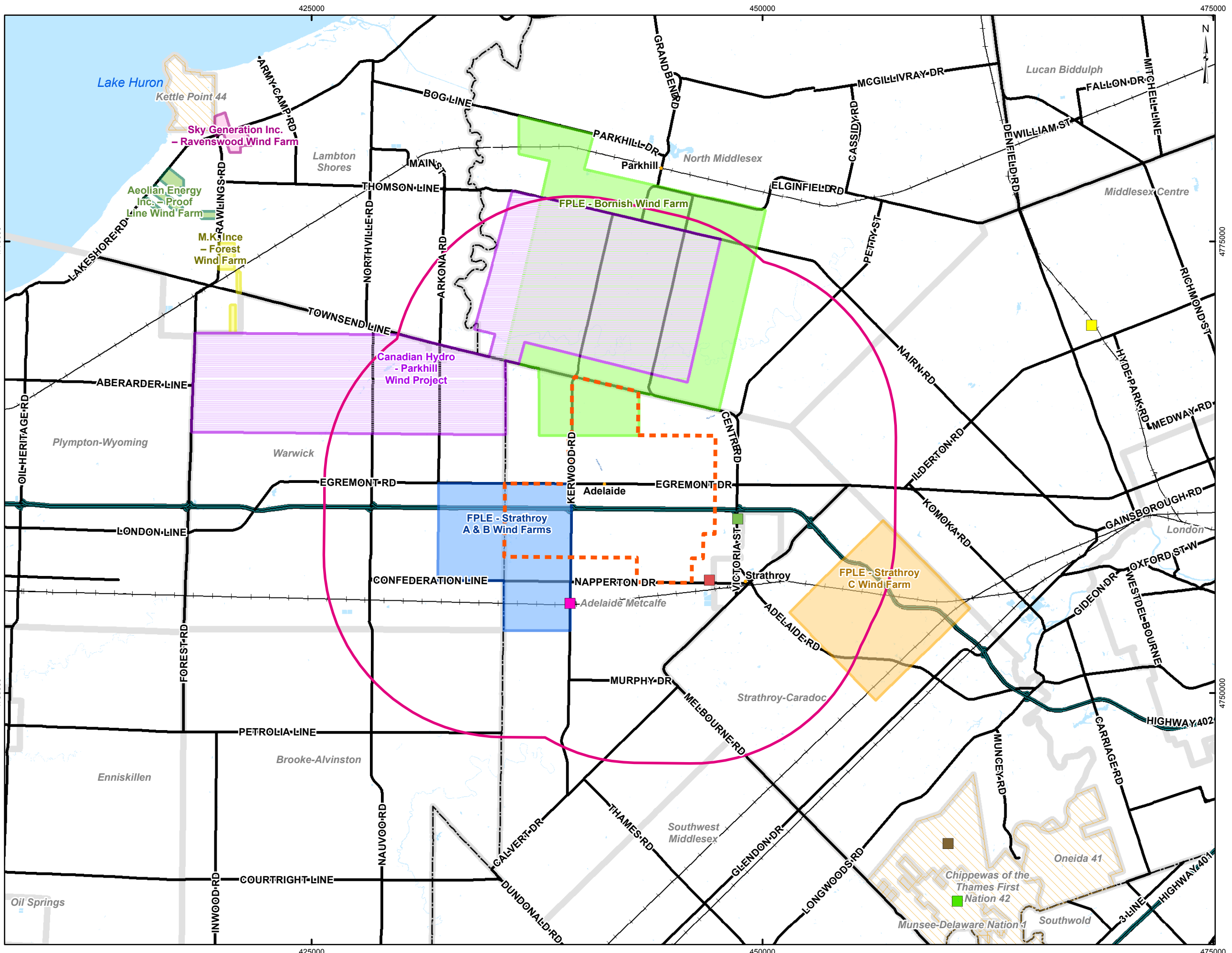
REFERENCE

Base Data - MNR NRVIS, obtained 2004, CANMAP v2006.4
 Produced by Golder Associates Ltd under licence from Ontario Ministry of Natural Resources, © Queens Printer 2009
 Land Capability Data - The Canada Land Inventory
 Datum: NAD 83 Projection: UTM Zone 17N



PROJECT		ADELAIDE WIND FARM PROJECT	
TITLE			
ABORIGINAL COMMUNITIES IN THE REGIONAL AND LOCAL STUDY AREA			
	PROJECT NO. 07-1112-0151	SCALE AS SHOWN	REV. 0
DESIGN	ME	06 Mar. 2008	FIGURE: 7.10-1
GIS	ME	06 Mar. 2009	
CHECK	XX	06 Mar. 2009	
REVIEW	XX	06 Mar. 2009	

G:\Projects\2007\07-1112-0151\TCA\Adelaide\WinFarm\GIS\MXDs\Draft\February2009\Edits\Aboriginal_Communities.mxd



LEGEND

- Railway
- Expressway
- Major Road
- Municipal Boundary
- County Boundary
- Waterbody
- Native Reserve
- Site Study Area
- Cumulative Effects Assessment Boundary

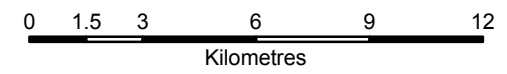
Other Projects

- Aeolian Energy Inc. - Proof Line Wind Farm
- Canadian Hydro - Parkhill Wind Project
- FPLE - Bornish Wind Farm Project
- FPLE - Strathroy A & B Wind Farms
- FPLE - Strathroy C wind Farm
- M.K. Ince - Forest Wind Farm
- Sky Generation Inc. - Ravenswood Wind Farm
- Commercial / Truckstop Development
- Lynn Cattle Turnkey Manure Processing Plant
- Retail/Recreational and Commercial Development
- Retirement Home
- Village of Kerwood Septic System
- Water-main Servicing
- Munsee-Delaware First Nation



REFERENCE

Base Data - MNR NRVIS, obtained 2004, CANMAP v2006.4
 Produced by Golder Associates Ltd under licence from Ontario Ministry of Natural Resources, © Queens Printer 2009
 Datum: NAD 83 Projection: UTM Zone 17N



PROJECT
ADELAIDE WIND FARM PROJECT

TITLE
CUMULATIVE EFFECTS ASSESMENT

	PROJECT NO. 07-1112-0151	SCALE AS SHOWN	REV. 0
	DESIGN PP 05 Mar 2008		
	CIS JO 12 Mar 2009		
	CHECK PP 12 Mar 2009		
	REVIEW		

FIGURE: 7.16-1

G:\Projects\2007\07-1112-0151 - TCI\Adelaide Wind Farm\GIS\MapDocs\Draft\February2009\Edits\Report\CumulativeEffects.mxd