

G:\Projects\2011\11-1154-0021_NextEra_Adelaide\GIS\MapXDs\Reporting\Archaeology\Stage2SurveyMethodsJuly2012\Fig - 5-17 STAGE 2 SURVEY METHODS.mxd



LEGEND

- 1 Photographic Direction
- Turbine Layout
- MET Tower
- Collector Cable
- Access Road
- Proposed Transmission Line
- Roads
- Utility Line
- Watercourse
- Stage 2 Pedestrian Survey at 5m Intervals
- Stage 2 Test Pit Survey at 5m Intervals
- Steep Slope - Not Assessed
- Previous Stage 2 Archaeological Assessment (reported under P001-452-2008, P001-526-2009, P084-197-2009, P218-096-2011, and P319-015-2012)
- Disturbed Area - Not Assessed
- Land Parcel
- Substation
- Waterbody
- Wetland

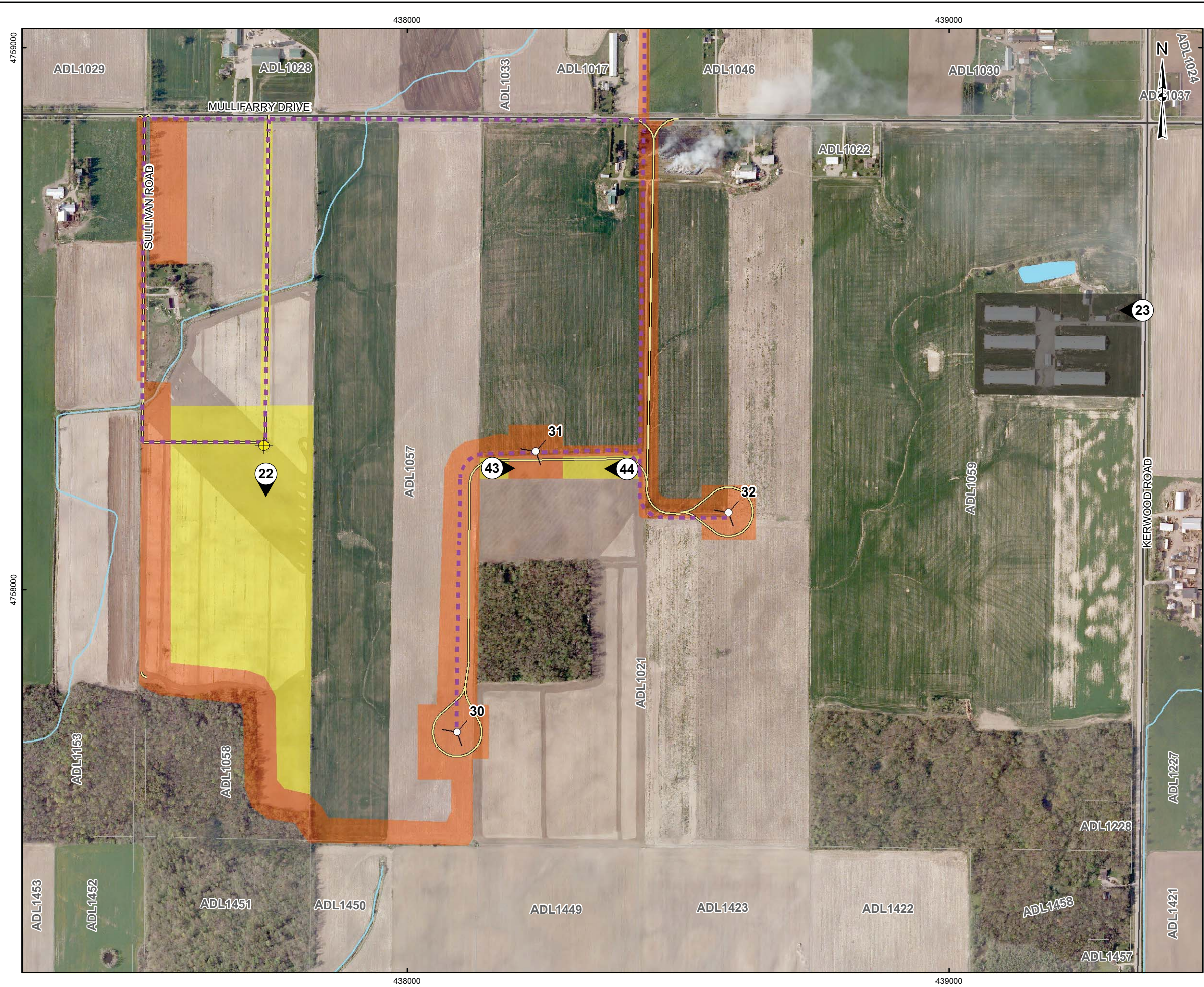
REFERENCE

Base Data - MNR NRVIS, obtained 2004, CANMAP v2006.4
 Produced by Golder Associates Ltd under licence from
 Ontario Ministry of Natural Resources, © Queens Printer 2008
 Projection: Transverse Mercator Datum: NAD 83 Coordinate System: UTM Zone 17N



PROJECT		ADDITIONAL STAGE 2 ARCHAEOLOGICAL ASSESSMENT, ADELAIDE WIND ENERGY CENTRE MIDDLESEX COUNTY, ONTARIO	
TITLE		STAGE 2 SURVEY METHODS	
PROJECT NO. 11-1154-0021		SCALE AS SHOWN	REV. 0.0
DESIGN	JMC	2 Feb. 2012	FIGURE: 5-17
GIS	BC	20 Jul. 2012	
CHECK	SM	20 Jul. 2012	
REVIEW	JM	20 Jul. 2012	



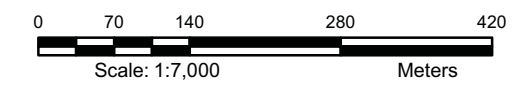


LEGEND

- Photographic Direction
- Turbine Layout
- MET Tower
- Collector Cable
- Access Road
- Proposed Transmission Line
- Roads
- Utility Line
- Watercourse
- Stage 2 Pedestrian Survey at 5m Intervals
- Stage 2 Test Pit Survey at 5m Intervals
- Steep Slope - Not Assessed
- Previous Stage 2 Archaeological Assessment (reported under P001-452-2008, P001-526-2009, P084-197-2009, P218-096-2011, and P319-015-2012)
- Disturbed Area - Not Assessed
- Land Parcel
- Substation
- Waterbody
- Wetland

REFERENCE

Base Data - MNR NRVIS, obtained 2004, CANMAP v2006.4
 Produced by Golder Associates Ltd under licence from
 Ontario Ministry of Natural Resources, © Queens Printer 2008
 Projection: Transverse Mercator Datum: NAD 83 Coordinate System: UTM Zone 17N



PROJECT **ADDITIONAL STAGE 2 ARCHAEOLOGICAL ASSESSMENT, ADELAIDE WIND ENERGY CENTRE MIDDLESEX COUNTY, ONTARIO**

TITLE **STAGE 2 SURVEY METHODS**

<p>Golder Associates Mississauga, Ontario</p>	PROJECT NO. 11-1154-0021	SCALE AS SHOWN	REV. 0.0
	DESIGN JMC 2 Feb. 2012	<p>FIGURE: 5-18</p>	
	GIS BC 20 Jul. 2012		
	CHECK SM 20 Jul. 2012		
	REVIEW JM 20 Jul. 2012		

G:\Projects\201111-1154-0021_NextEra_Adelaida\GIS\MXDs\Reporting\Archaeology\Stage2SurveyMethods\July2012\Fig - 5-19 STAGE 2 SURVEY METHODS.mxd



LEGEND

- 1 Photographic Direction
- Turbine Layout
- MET Tower
- Collector Cable
- Access Road
- Proposed Transmission Line
- Roads
- Utility Line
- Watercourse
- Stage 2 Pedestrian Survey at 5m Intervals
- Stage 2 Test Pit Survey at 5m Intervals
- Steep Slope - Not Assessed
- Previous Stage 2 Archaeological Assessment (reported under P001-452-2008, P001-526-2009, P084-197-2009, P218-096-2011, and P319-015-2012)
- Disturbed Area - Not Assessed
- Land Parcel
- Substation
- Waterbody
- Wetland

REFERENCE

Base Data - MNR NRVIS, obtained 2004, CANMAP v2006.4
 Produced by Golder Associates Ltd under licence from
 Ontario Ministry of Natural Resources, © Queens Printer 2008
 Projection: Transverse Mercator Datum: NAD 83 Coordinate System: UTM Zone 17N



PROJECT		ADDITIONAL STAGE 2 ARCHAEOLOGICAL ASSESSMENT, ADELAIDE WIND ENERGY CENTRE MIDDLESEX COUNTY, ONTARIO	
TITLE		STAGE 2 SURVEY METHODS	
PROJECT NO. 11-1154-0021		SCALE AS SHOWN	REV. 0.0
DESIGN	JMC	2 Feb. 2012	FIGURE: 5-19
GIS	BC	20 Jul. 2012	
CHECK	SM	20 Jul. 2012	
REVIEW	JM	20 Jul. 2012	

