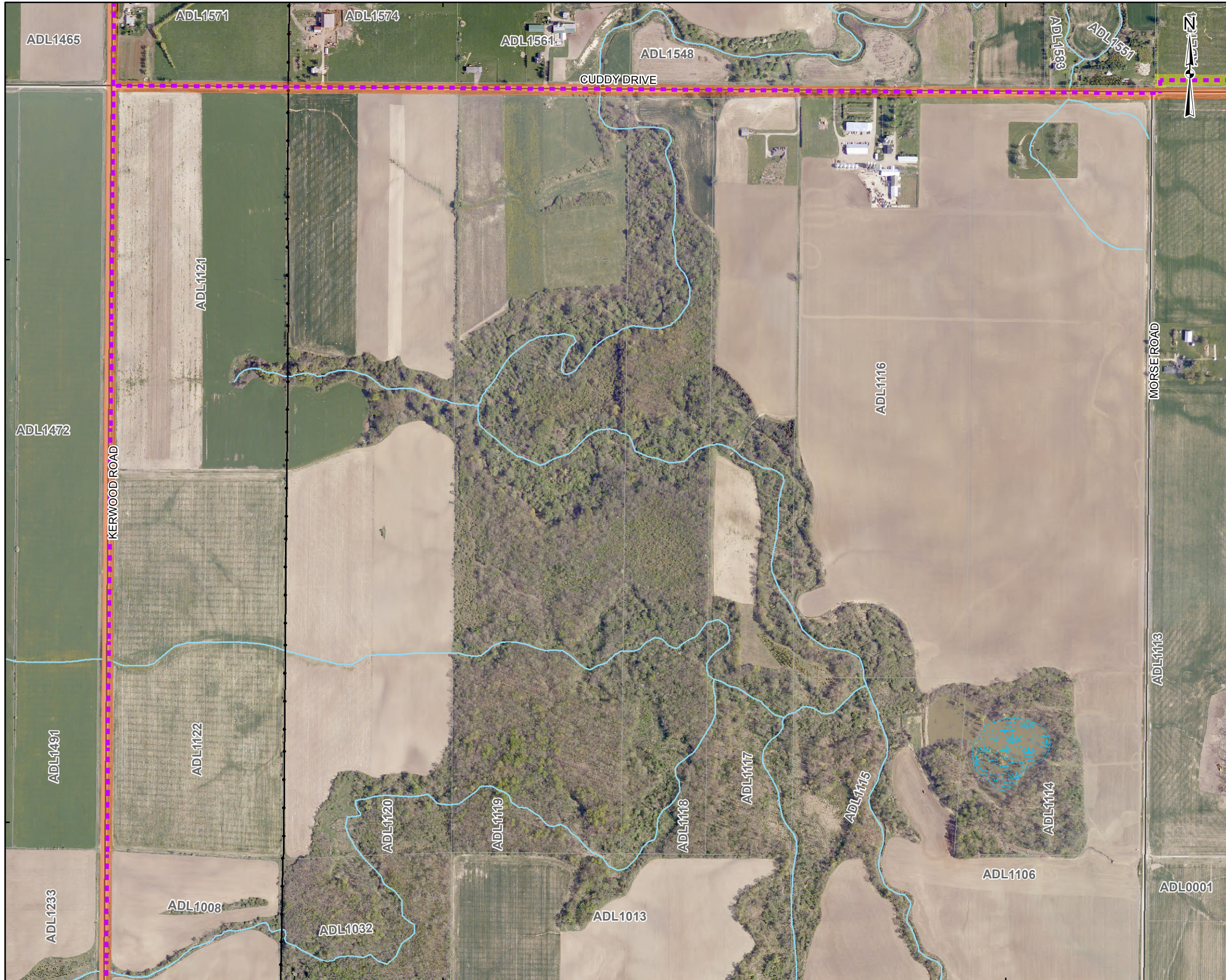


G:\Projects\2011\11-1154-0021\_NextEra\_Adelaide\GIS\MapXDs\Reporting\Archaeology\Stage2SurveyMethods\July2012\Fig - 5-02 STAGE 2 SURVEY METHODS.mxd



**LEGEND**

- 1 Photographic Direction
- Turbine Layout
- MET Tower
- Collector Cable
- Access Road
- Proposed Transmission Line
- Roads
- Utility Line
- Watercourse
- Stage 2 Pedestrian Survey at 5m Intervals
- Stage 2 Test Pit Survey at 5m Intervals
- Steep Slope - Not Assessed
- Previous Stage 2 Archaeological Assessment (reported under P001-452-2008, P001-526-2009, P084-197-2009, P218-096-2011, and P319-015-2012)
- Disturbed Area - Not Assessed
- Land Parcel
- Substation
- Waterbody
- Wetland

**REFERENCE**

Base Data - MNR NRVIS, obtained 2004, CANMAP v2006.4  
 Produced by Golder Associates Ltd under licence from Ontario Ministry of Natural Resources, © Queens Printer 2008  
 Projection: Transverse Mercator Datum: NAD 83 Coordinate System: UTM Zone 17N

Scale: 1:7,000 Meters

PROJECT		ADDITIONAL STAGE 2 ARCHAEOLOGICAL ASSESSMENT, ADELAIDE WIND ENERGY CENTRE MIDDLESEX COUNTY, ONTARIO		
TITLE		STAGE 2 SURVEY METHODS		
	PROJECT NO.	11-1154-0021	SCALE AS SHOWN	REV. 0.0
	DESIGN	JMC 2 Feb. 2012		
	GIS	BC 20 Jul. 2012		
	CHECK	SM 20 Jul. 2012		
REVIEW	JM 20 Jul. 2012			

**FIGURE: 5-02**

G:\Projects\2011\11-1154-0021\_NextEra\_Adelaida\GIS\MapDocs\Reporting\Archaeology\Stage2SurveyMethods\July2012\Fig - 5-03 STAGE 2 SURVEY METHODS.mxd



**LEGEND**

- Photographic Direction
- Turbine Layout
- MET Tower
- Collector Cable
- Access Road
- Proposed Transmission Line
- Roads
- Utility Line
- Watercourse
- Stage 2 Pedestrian Survey at 5m Intervals
- Stage 2 Test Pit Survey at 5m Intervals
- Steep Slope - Not Assessed
- Previous Stage 2 Archaeological Assessment (reported under P001-452-2008, P001-526-2009, P084-197-2009, P218-096-2011, and P319-015-2012)
- Disturbed Area - Not Assessed
- Land Parcel
- Substation
- Waterbody
- Wetland

**REFERENCE**

Base Data - MNR NRVIS, obtained 2004, CANMAP v2006.4  
 Produced by Golder Associates Ltd under licence from  
 Ontario Ministry of Natural Resources, © Queens Printer 2008  
 Projection: Transverse Mercator Datum: NAD 83 Coordinate System: UTM Zone 17N



PROJECT		ADDITIONAL STAGE 2 ARCHAEOLOGICAL ASSESSMENT, ADELAIDE WIND ENERGY CENTRE MIDDLESEX COUNTY, ONTARIO		
TITLE		STAGE 2 SURVEY METHODS		
PROJECT NO. 11-1154-0021		SCALE AS SHOWN	REV. 0.0	
DESIGN	JMC	2 Feb. 2012		
GIS	BC	20 Jul. 2012		
CHECK	SM	20 Jul. 2012		
REVIEW	JM	20 Jul. 2012		

**FIGURE: 5-03**

