

**INSET: Notable Historic Structures Standing in 1878 According to the 1878 Historic Atlas**

Number	Lot	Concession	Structure	Current Status
1	2	2 S.E.R.	Factory	No longer standing
2	3	1 S.E.R.	Church/Cemetery	West Adelaide Presbyterian Cairn
3	6	2 N.E.R.	Schoolhouse	No longer standing
4	7	5 N.E.R.	Church	No longer standing
5	7	5 N.E.R.	Schoolhouse	No longer standing
6	7	4 N.E.R.	Post Office	No longer standing
7	7	4 N.E.R.	Brickyard	No longer standing
8	7	2 S.E.R.	Schoolhouse	No longer standing
9	7	3 S.E.R.	Church	No longer standing
10	11	1 N.E.R.	Schoolhouse	No longer standing
11	11	1 N.E.R.	Roman Catholic Church	Only cemetery remains at this location
12	11	1 N.E.R.	Anglican Church/Cemetery	Still Standing
13	11	1 N.E.R.	Mill	No longer standing
14	11	1 N.E.R.	Post Office	No longer standing
15	12	3 S.E.R.	Church	No longer standing
16	13	2 N.E.R.	Church	No longer standing
17	13	4 S.E.R.	Lime Kiln	No longer standing
18	14	4 S.E.R.	Schoolhouse	No longer standing
19	18	3 S.E.R.	Schoolhouse	No longer standing
20	19	1 N.E.R.	Schoolhouse	No longer standing
21	19	2 N.E.R.	Schoolhouse	No longer standing

**LEGEND**

- Turbine
- Permanent MET Mast
- Overhead Cable
- Underground Cable
- Access Road
- Substation
- Site Study Area
- Expressway
- Major Road
- Local Road
- Watercourse, Permanent
- Watercourse, Intermittent
- Proposed Laydown / Staging Area
- Optioned Lots
- Municipal Boundary
- Waterbody, Permanent
- Wetland, Permanent
- Approximate Location of Settlement in 1878 Historic Atlas
- Approximate Location of Structure in 1878 Historic Atlas
- 88** Number of Historic Structure Listed in Inset
- Approximate Location of Farmsteads
- Approximate Location of Highway 402 Corridor
- Approximate Location of Hydro Corridor

**REFERENCE**

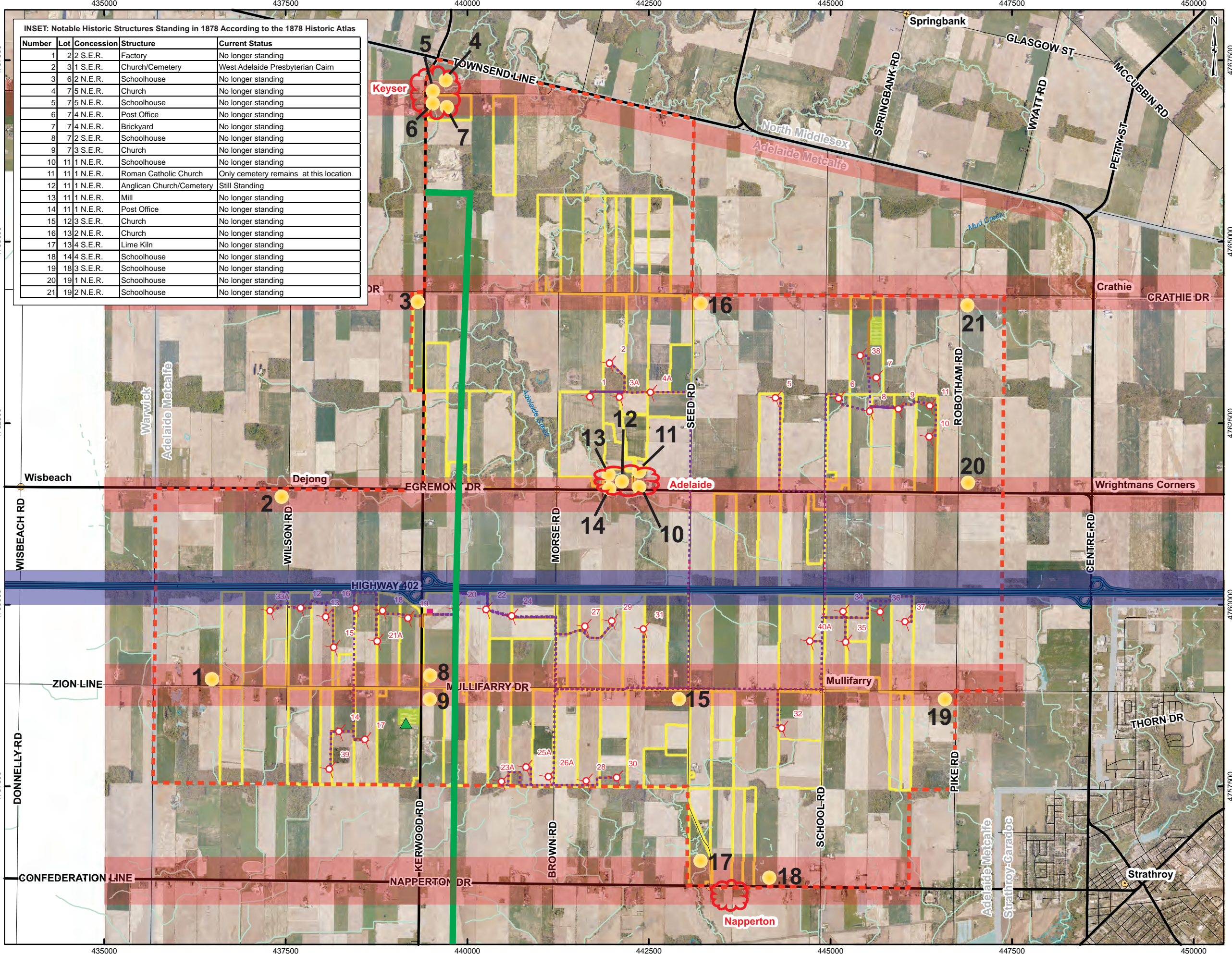
Base Data - MNR NRVIS, obtained 2004, CANMAP v2006.4  
 Produced by Golder Associates Ltd under licence from Ontario Ministry of Natural Resources, © Queens Printer 2010  
 Air Photo - Spring 2006 First Base Solutions.  
 Datum: NAD 83 Projection: UTM Zone 17N

**PROJECT**  
 ADELAIDE WIND FARM PROJECT

**TITLE**  
 General Historical Thematic Map of the Study Area

	PROJECT NO. 07-1112-0151	SCALE AS SHOWN	REV. 0
	DESIGN PP 05 Mar 2008		
	GIS PP 26 Mar 2010		
	CHECK LHJR 26 Mar 2010		
	REVIEW JW 26 Mar 2010		

**FIGURE: 11**



G:\Projects\2007-1112-0151\_TCA\AdelaideWindFarm\GIS\MapDocs\Draft\EA\March2010\Sitelayout.mxd