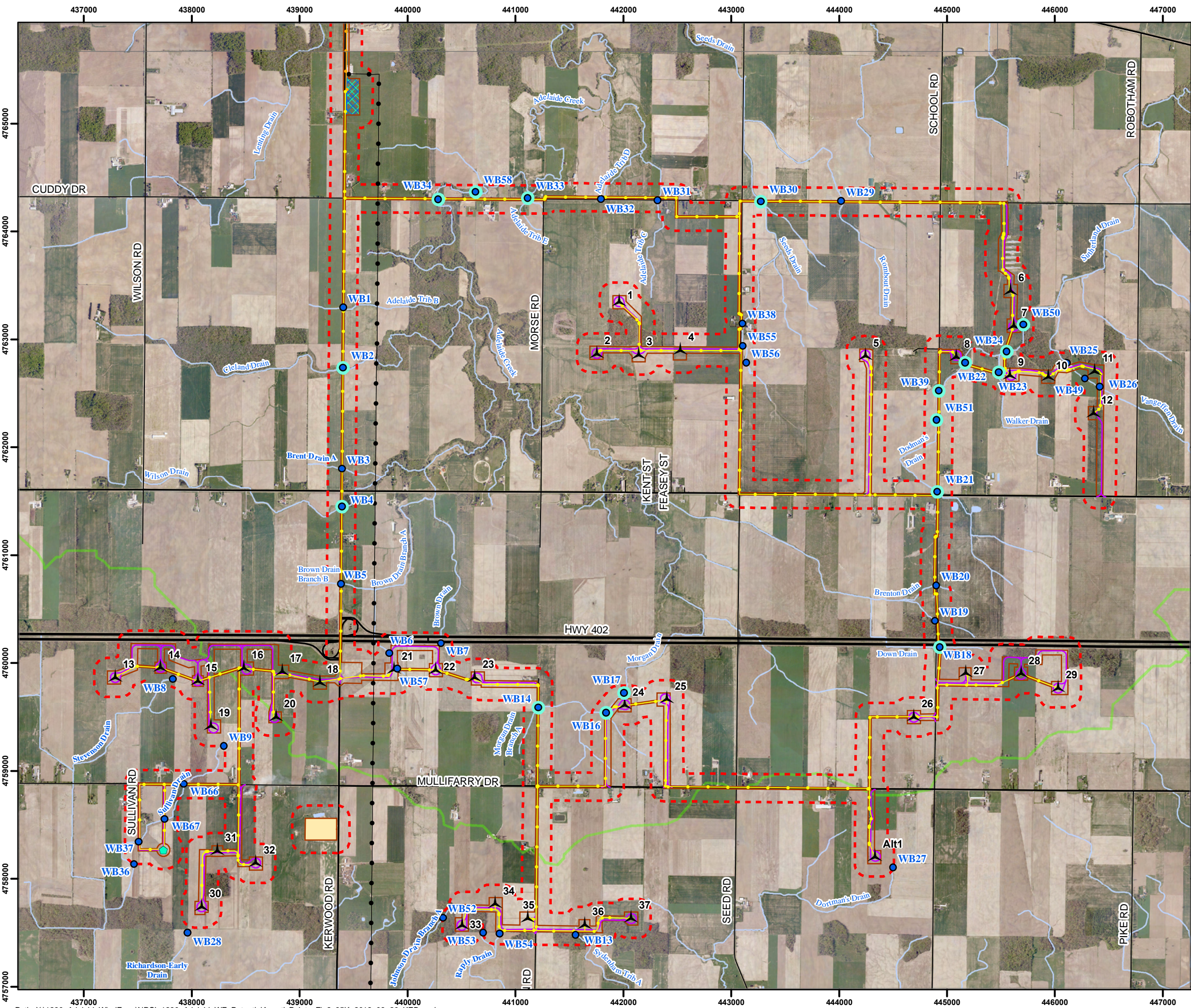


Figure 2

Adelaide Wind Energy Centre Project Area and Water Bodies (Southern Project Area)



Legend

- Project Area (120m)
- Non-Water Body
- Water Body
- ▲ Turbine
- ▲ MET
- Access Road
- Collector System (Underground Cabling)
- Transmission Line (Overground Cabling)
- Project Location
- Staging Area
- Substation
- Operations & Maintenance Buildings
- Existing Transmission Line
- Railroad
- Highway
- Primary Road
- Secondary Road
- Watercourse
- Waterbody
- Watershed
- Provincially Significant Wetland (PSW)
- Other Wetland
- ANSI, Life Science
- ANSI, Earth Science

NATURAL RESOURCE SOLUTIONS INC.
Aquatic, Terrestrial and Wetland Biologists

Map Produced by Natural Resource Solutions Inc. This map is proprietary and confidential and must not be duplicated or distributed by any means without express written permission of NRSI. Source: Data provided by MNR. Copyright: Queen's Printer Ontario

Project: 1230 Date: August 20, 2012	NAD83 - UTM Zone 17 Scale: 1:35,000 (11x17")
--	---

0 500 1,000 1,500 2,000 Metres