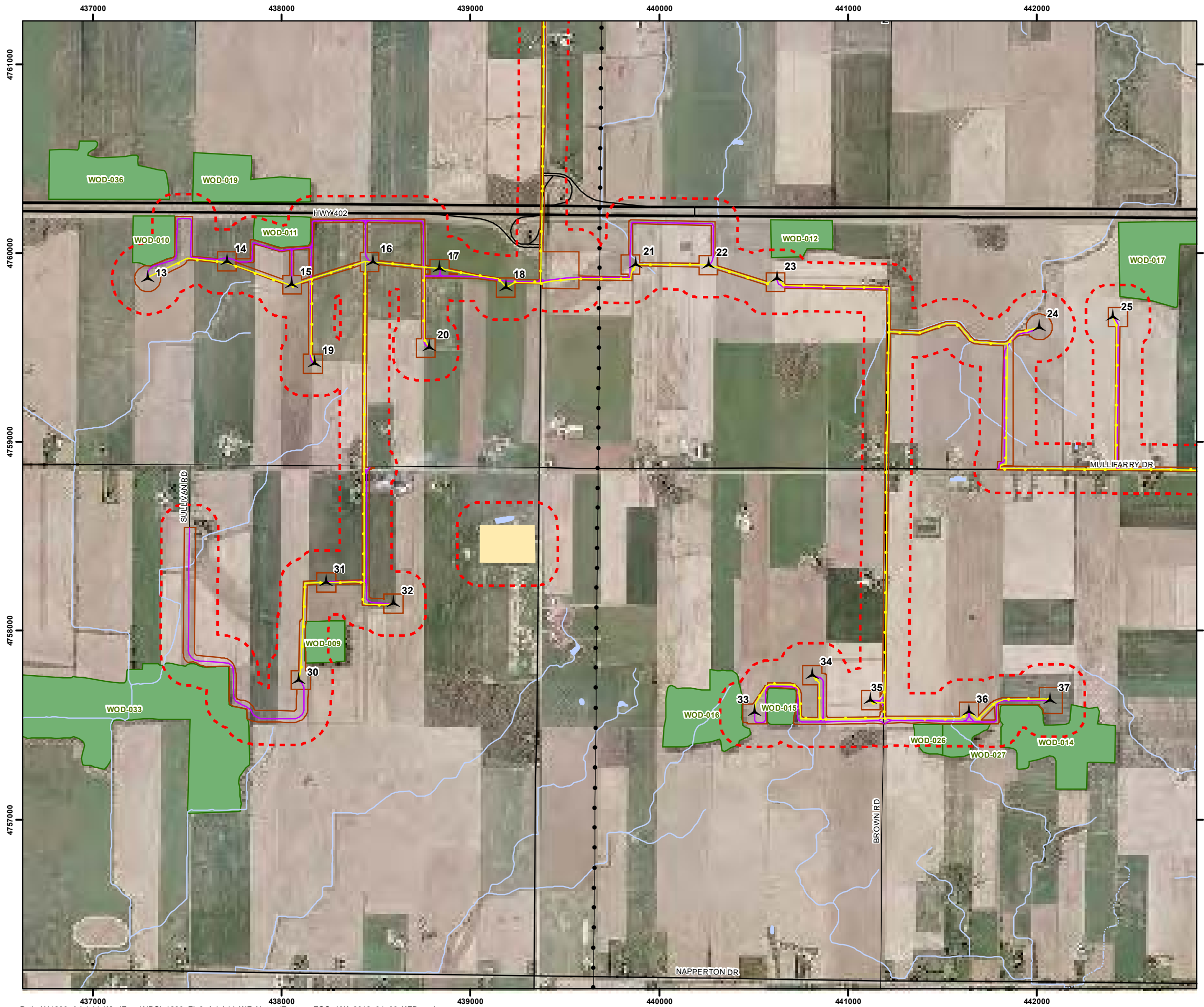


Figure 6

Adelaide Wind Energy Centre Significant Features - Southwest



- Legend**
- Project Area (120m Buffer)
 - Project Location
 - Turbine
 - Point of Common Coupling (PCC)
 - Access Road
 - Collector System
 - Transmission Line
 - Staging Area
 - Interconnection Facilities
 - Substation
 - Existing Transmission Line
 - Railroad
 - Highway
 - Primary Road
 - Secondary Road
 - Permanent Watercourse
 - Intermittent Watercourse
 - Waterbody
 - Woodlot (WOD)
 - Wetland (WET)
 - Valleyland (VAL)

NATURAL RESOURCE SOLUTIONS INC.
Aquatic, Terrestrial and Wetland Biologists

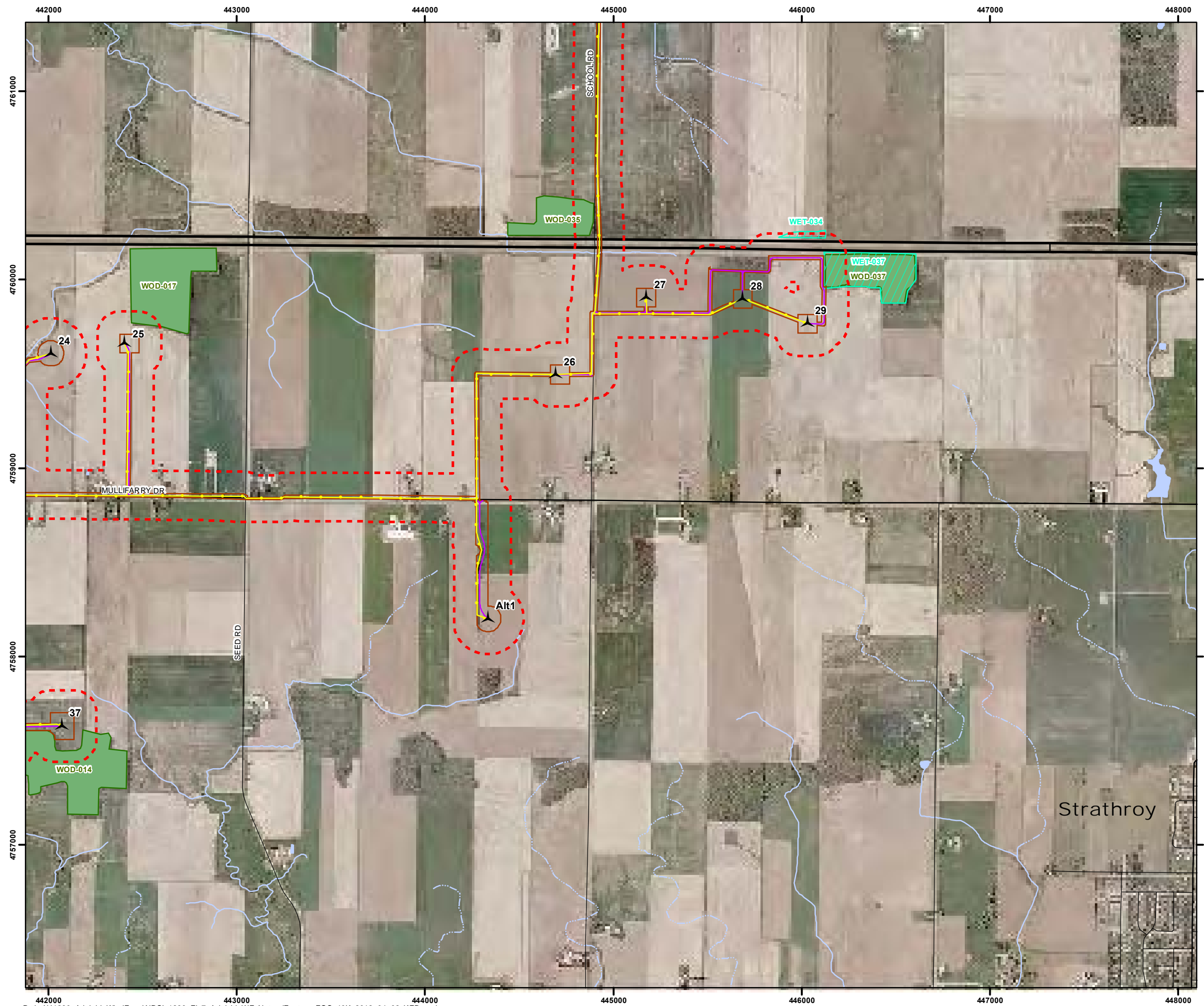
Map Produced by Natural Resource Solutions Inc. This map is proprietary and confidential and must not be duplicated or distributed by any means without express written permission of NRSI. Source: Data provided by MNR. Copyright: Queen's Printer Ontario

Project: 1230 Date: April 9, 2012	NAD83 - UTM Zone 17 Scale: 1:20,000 (11x17")
--------------------------------------	---

0 200 400 600 800 1,000 Metres

Figure 7

Adelaide Wind Energy Centre Significant Features - Southeast



Legend

- Project Area (120m Buffer)
- Project Location
- Turbine
- Point of Common Coupling (PCC)
- Access Road
- Collector System
- Transmission Line
- Staging Area
- Interconnection Facilities
- Substation
- Existing Transmission Line
- Railroad
- Highway
- Primary Road
- Secondary Road
- Permanent Watercourse
- Intermittent Watercourse
- Waterbody
- Woodlot (WOD)
- Wetland (WET)
- Valleyland (VAL)

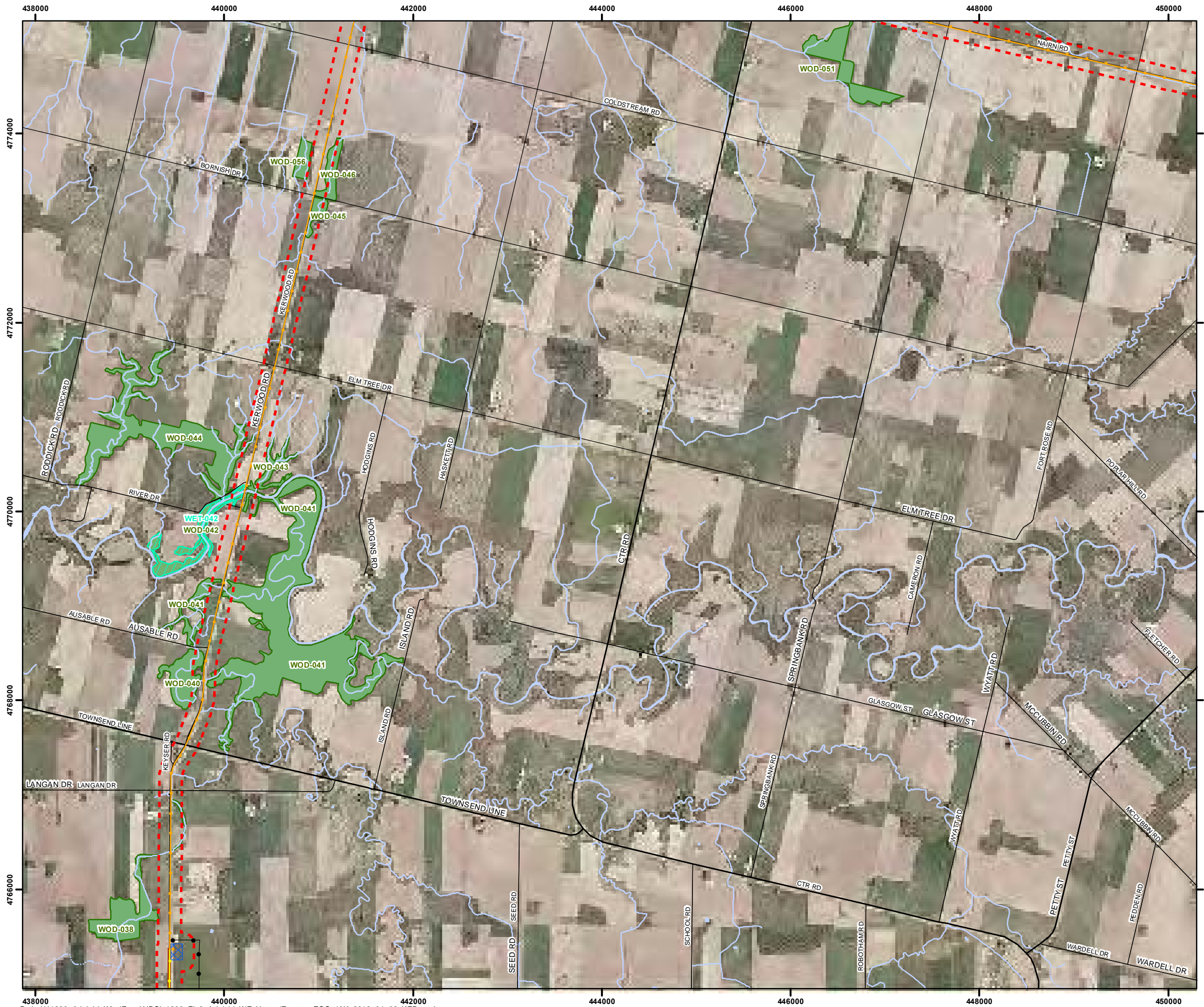
NATURAL RESOURCE SOLUTIONS INC.
Aquatic, Terrestrial and Wetland Biologists

Map Produced by Natural Resource Solutions Inc. This map is proprietary and confidential and must not be duplicated or distributed by any means without express written permission of NRSI. Source: Data provided by MNR. Copyright: Queen's Printer Ontario

Project: 1230 Date: April 2, 2012	NAD83 - UTM Zone 17 Scale: 1:20,000 (11x17")
--------------------------------------	---

Figure 8

Adelaide Wind Energy Centre Significant Features - Kerwood T-Line



Legend

- Project Area (120m Buffer)
- Project Location
- Turbine
- Point of Common Coupling (PCC)
- Access Road
- Collector System
- Transmission Line
- Staging Area
- Interconnection Facilities
- Substation
- Existing Transmission Line
- Railroad
- Highway
- Primary Road
- Secondary Road
- Permanent Watercourse
- Intermittent Watercourse
- Waterbody
- Woodlot (WOD)
- Wetland (WET)
- Valleyland (VAL)

NATURAL RESOURCE SOLUTIONS INC.
Aquatic, Terrestrial and Wetland Biologists

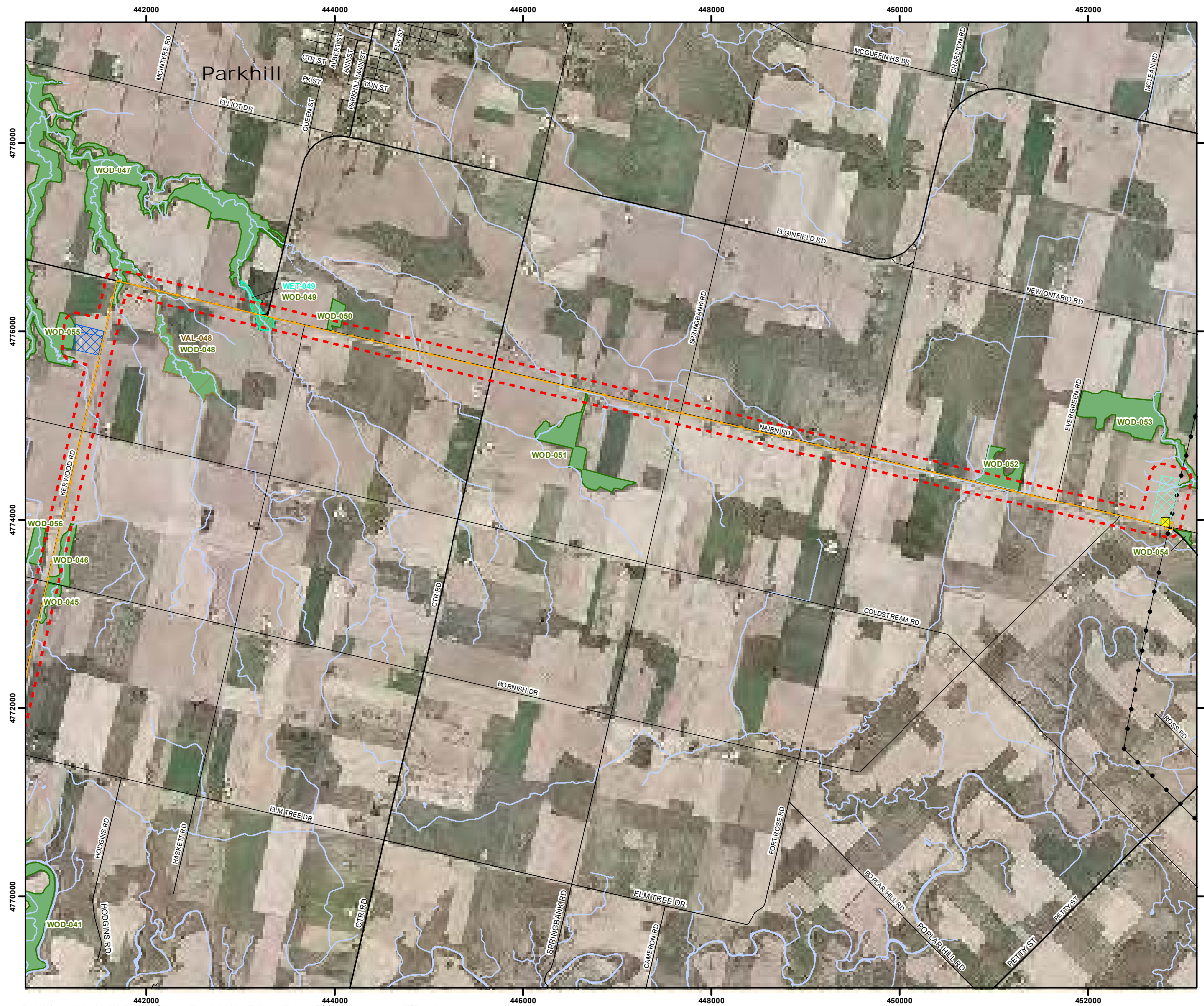
Map Produced by Natural Resource Solutions Inc. This map is proprietary and confidential and must not be duplicated or distributed by any means without express written permission of NRSI. Source: Data provided by MNR. Copyright: Queen's Printer Ontario

Project: 1230 Date: April 2, 2012	NAD83 - UTM Zone 17 Scale: 1:40,000 (11x17")
--------------------------------------	---

0 500 1,000 1,500 2,000 Metres


Figure 9

Adelaide Wind Energy Centre Significant Features - Nairn T-Line



Legend

- Project Area (120m Buffer)
- Project Location
- Turbine
- Point of Common Coupling (PCC)
- Access Road
- Collector System
- Transmission Line
- Staging Area
- Interconnection Facilities
- Substation
- Existing Transmission Line
- Railroad
- Highway
- Primary Road
- Secondary Road
- Permanent Watercourse
- Intermittent Watercourse
- Waterbody
- Woodlot (WOD)
- Wetland (WET)
- Valleyland (VAL)



NATURAL RESOURCE SOLUTIONS INC.
Aquatic, Terrestrial and Wetland Biologists

Map Produced by Natural Resource Solutions Inc. This map is proprietary and confidential and must not be duplicated or distributed by any means without express written permission of NRSI. Source: Data provided by MNR. Copyright: Queen's Printer Ontario

Project: 1230 Date: April 9, 2012	NAD83 - UTM Zone 17 Scale: 1:40,000 (11x17")
--------------------------------------	---

0
500
1,000
1,500
2,000 Metres


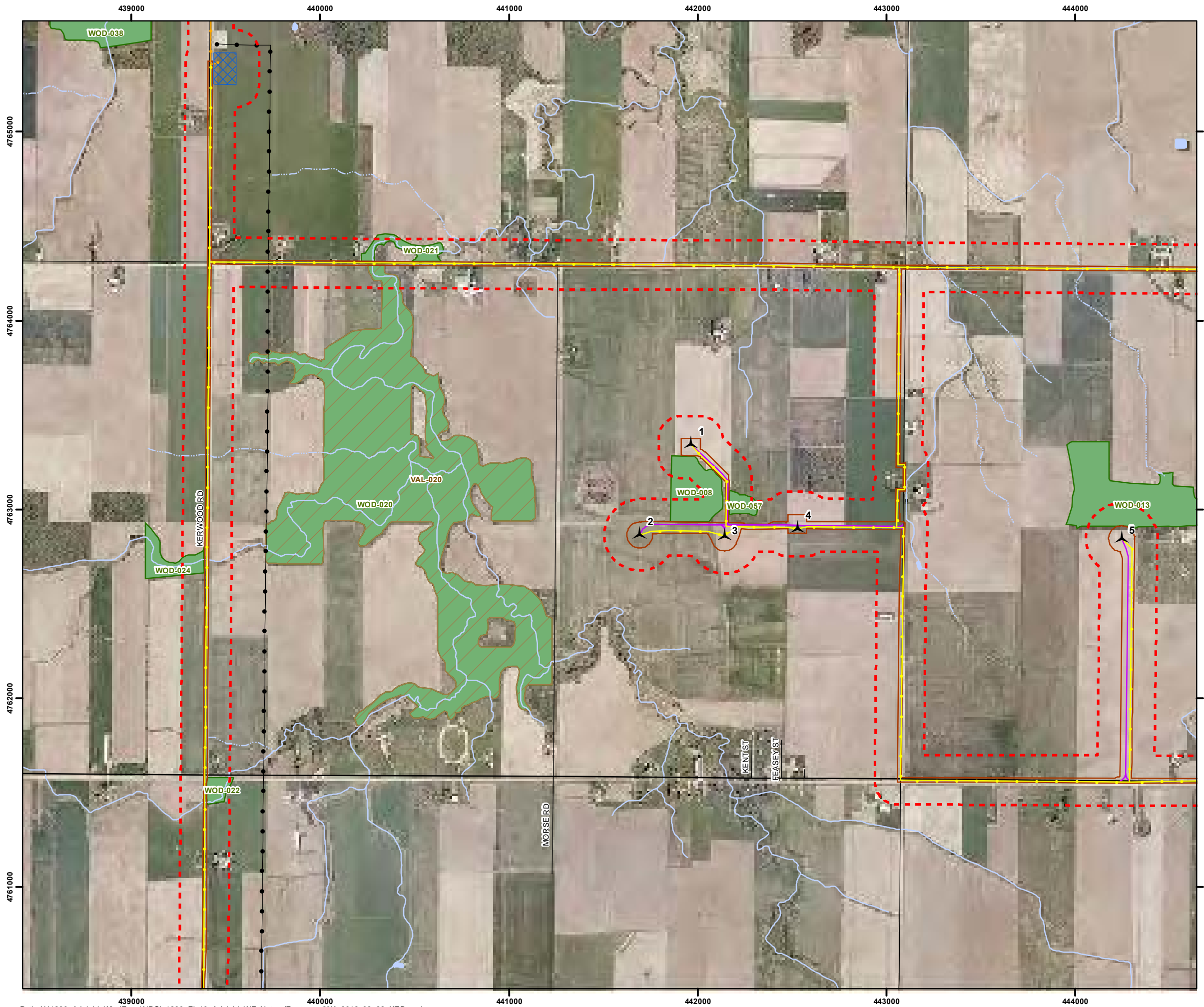



Figure 10

Adelaide Wind Energy Centre Natural Features - Northwest



Legend

- Project Area (120m Buffer)
- Project Location
- Turbine
- Point of Common Coupling (PCC)
- Access Road
- Collector System
- Transmission Line
- Staging Area
- Interconnection Facilities
- Substation
- Existing Transmission Line
- Railroad
- Highway
- Primary Road
- Secondary Road
- Permanent Watercourse
- Intermittent Watercourse
- Waterbody
- Woodlot (WOD)
- Wetland (WET)
- Valleyland (VAL)

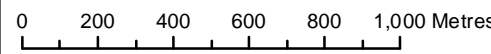


NATURAL RESOURCE SOLUTIONS INC.
Aquatic, Terrestrial and Wetland Biologists

Map Produced by Natural Resource Solutions Inc. This map is proprietary and confidential and must not be duplicated or distributed by any means without express written permission of NRSI. Source: Data provided by MNR. Copyright: Queen's Printer Ontario

Project: 1230 Date: January 6, 2012	NAD83 - UTM Zone 17 Scale: 1:20,000 (11x17")
--	---

0 200 400 600 800 1,000 Metres



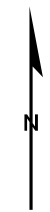
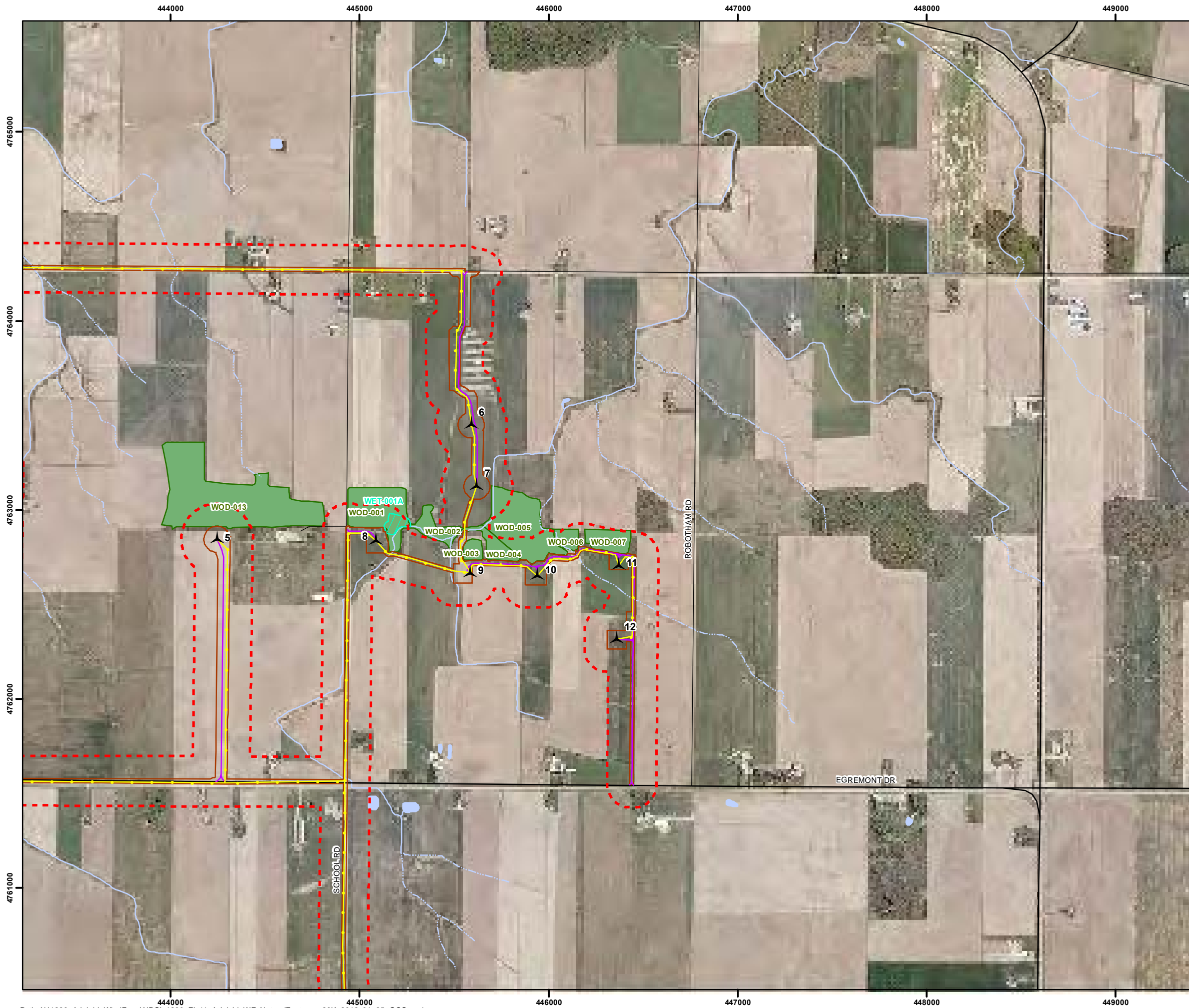


Figure 11

Adelaide Wind Energy Centre Natural Features - Northeast



Legend

- Project Area (120m Buffer)
- Project Location
- Turbine
- Point of Common Coupling (PCC)
- Access Road
- Collector System
- Transmission Line
- Staging Area
- Interconnection Facilities
- Substation
- Existing Transmission Line
- Railroad
- Highway
- Primary Road
- Secondary Road
- Permanent Watercourse
- Intermittent Watercourse
- Waterbody
- Woodlot (WOD)
- Wetland (WET)
- Valleyland (VAL)



Map Produced by Natural Resource Solutions Inc. This map is proprietary and confidential and must not be duplicated or distributed by any means without express written permission of NRSI. Source: Data provided by MNR. Copyright: Queen's Printer Ontario

Project: 1230 Date: January 6, 2012	NAD83 - UTM Zone 17 Scale: 1:20,000 (11x17")
--	---

