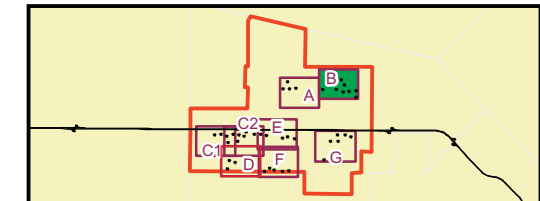
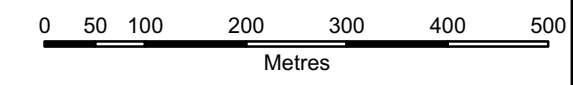


- LEGEND**
- Turbine Layout 38
 - Substation
 - Access Road
 - Collector Cable
 - Site Study Area
 - Expressway
 - Major Road
 - Local Road
 - Watercourse, Permanent
 - Watercourse, Intermittent
 - Proposed Laydown / Staging Area
 - Municipal Boundary
 - Waterbody, Permanent
 - Wetland, Permanent
 - Stage 2 Pedestrian Survey, 5m Intervals
 - Disturbed, Not Assessed
 - Archaeological Location, Stage 3 Required
 - Archaeological Location, Stage 2 Only



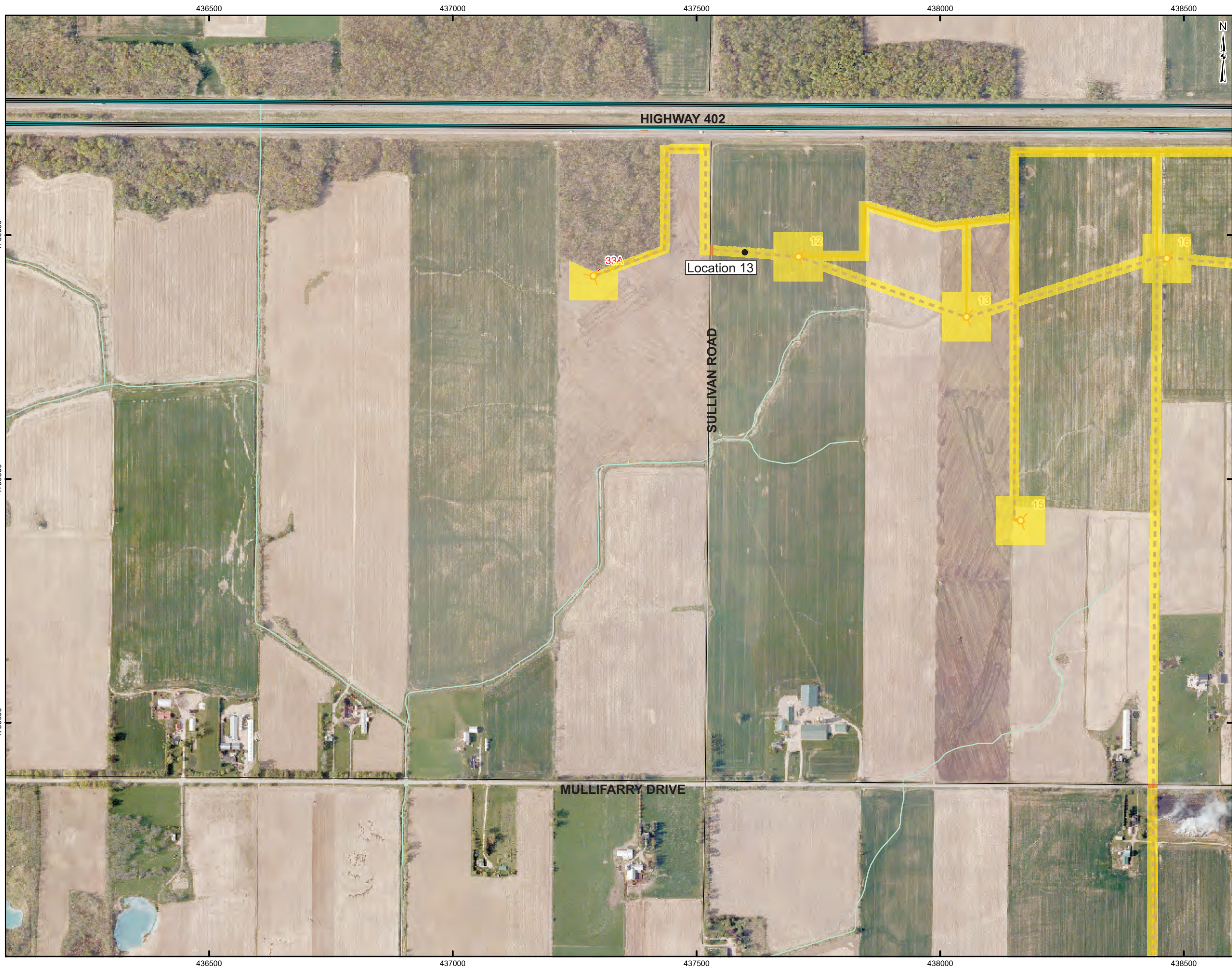
REFERENCE

Base Data - MNR NRVIS, obtained 2004, CANMAP v2006.4
 Produced by Golder Associates Ltd under licence from Ontario Ministry of Natural Resources, © Queens Printer 2009
 Air Photo - Spring 2006 First Base Solutions.
 Datum: NAD 83 Projection: UTM Zone 17N

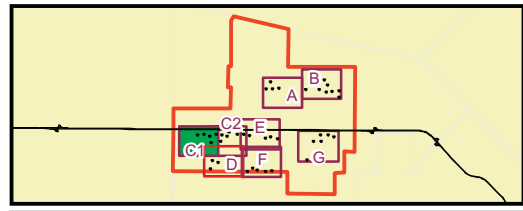


PROJECT	STAGE 2 ARCHAEOLOGICAL ASSESSMENT		
	NEXTERA ADELAIDE WIND FARM		
	GEO. TWP. OF ADELAIDE, MIDDLESEX COUNTY, ONTARIO		
TITLE	STAGE 2 METHODS AND RESULTS		
	PROJECT NO.	07-1112-0151	SCALE AS SHOWN
	DESIGN	PP 05 Mar. 2008	REV. 0
	CHECK	PP 16 Nov. 2009	
	REVIEW		
			TILE B

G:\Projects\2007\07-1112-0151_TCA\Adelaide\WindFarm\GIS\MapDocs\Draft\February2009\Ecils\Archaeology\FieldMap_B.mxd

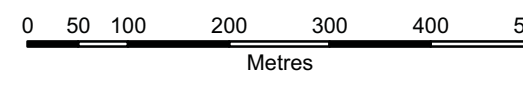


- LEGEND**
- Turbine Layout 38
 - Substation
 - Access Road
 - Collector Cable
 - Site Study Area
 - Expressway
 - Major Road
 - Local Road
 - Watercourse, Permanent
 - Watercourse, Intermittent
 - Proposed Laydown / Staging Area
 - Municipal Boundary
 - Waterbody, Permanent
 - Wetland, Permanent
 - Stage 2 Pedestrian Survey, 5m Intervals
 - Disturbed, Not Assessed
 - Archaeological Location, Stage 3 Required
 - Archaeological Location, Stage 2 Only



REFERENCE

Base Data - MNR NRVIS, obtained 2004, CANMAP v2006.4
 Produced by Golder Associates Ltd under licence from Ontario Ministry of Natural Resources, © Queens Printer 2009
 Air Photo - Spring 2006 First Base Solutions.
 Datum: NAD 83 Projection: UTM Zone 17N



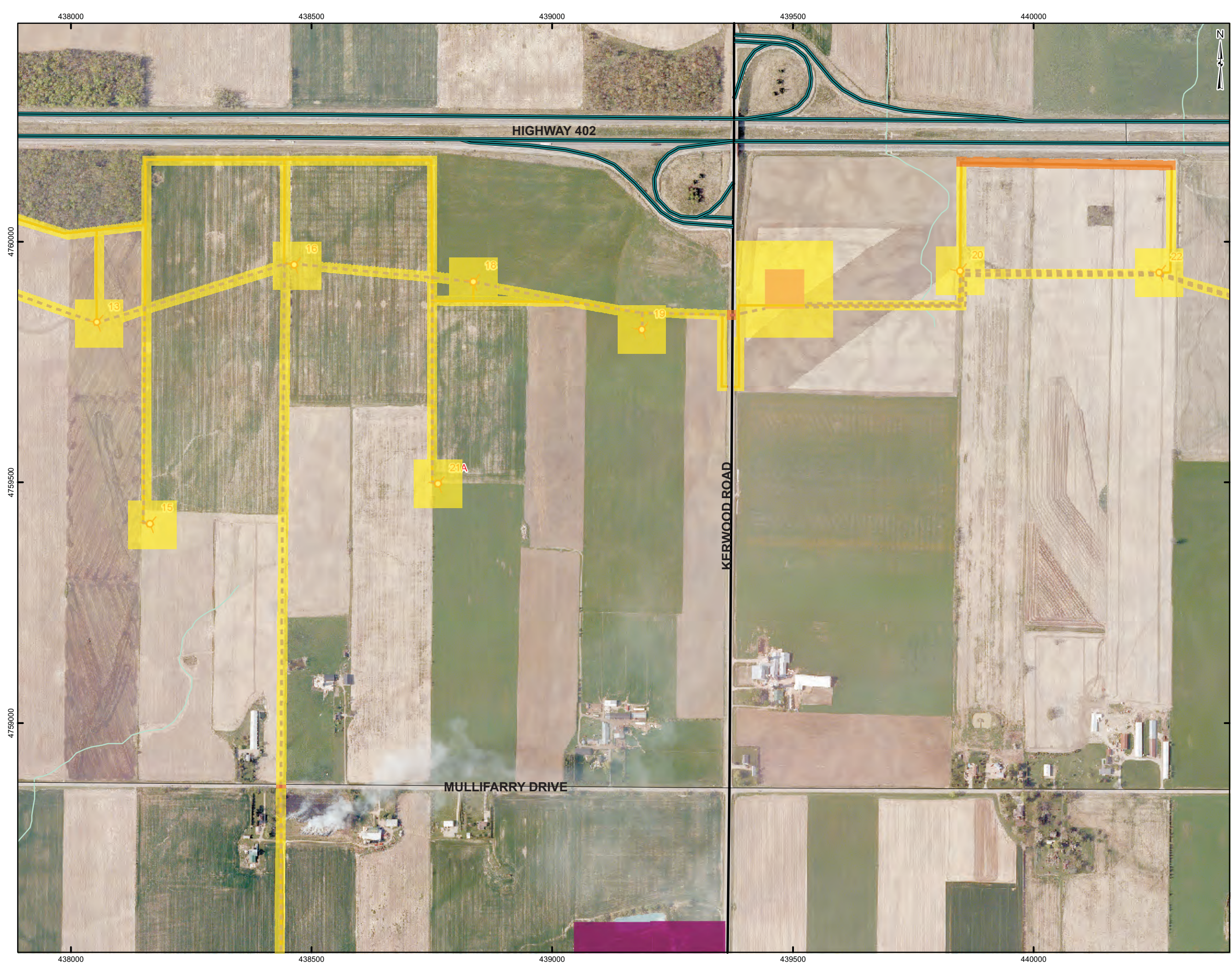
PROJECT STAGE 2 ARCHAEOLOGICAL ASSESSMENT
 NEXT ERA ADELAIDE WIND FARM
 GEO. TWP. OF ADELAIDE, MIDDLESEX COUNTY, ONTARIO

TITLE **STAGE 2 METHODS AND RESULTS**

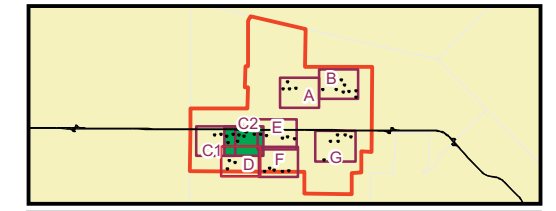
	PROJECT NO.	07-1112-0151	SCALE AS SHOWN	REV. 0
	DESIGN	PP	05 Mar. 2008	
	GIS	PP	16 Nov. 2009	
	CHECK			
	REVIEW			

TILE C1

G:\Projects\2007\07-1112-0151_TCA\AdelaideWindFarm\GIS\MapDocs\Draft\February2009\Edits\Archaeology\FieldMap_C.mxd

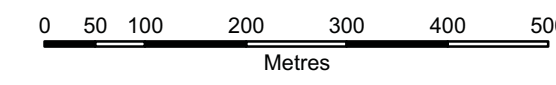


- LEGEND**
- Turbine Layout 38
 - Substation
 - Access Road
 - Collector Cable
 - Site Study Area
 - Expressway
 - Major Road
 - Local Road
 - Watercourse, Permanent
 - Watercourse, Intermittent
 - Proposed Laydown / Staging Area
 - Municipal Boundary
 - Waterbody, Permanent
 - Wetland, Permanent
 - Stage 2 Pedestrian Survey, 5m Intervals
 - Disturbed, Not Assessed
 - Archaeological Location, Stage 3 Required
 - Archaeological Location, Stage 2 Only



REFERENCE

Base Data - MNR NRVIS, obtained 2004, CANMAP v2006.4
 Produced by Golder Associates Ltd under licence from Ontario Ministry of Natural Resources, © Queens Printer 2009
 Air Photo - Spring 2006 First Base Solutions.
 Datum: NAD 83 Projection: UTM Zone 17N



PROJECT STAGE 2 ARCHAEOLOGICAL ASSESSMENT
 NEXTERA ADELAIDE WIND FARM
 GEO. TWP. OF ADELAIDE, MIDDLESEX COUNTY, ONTARIO

TITLE

STAGE 2 METHODS AND RESULTS

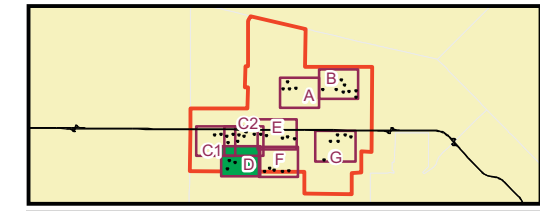
	PROJECT NO. 07-1112-0151	SCALE AS SHOWN	REV. 0
	DESIGN PP 05 Mar. 2008		
	GIS PP 16 Nov. 2009		
	CHECK		
	REVIEW		

TILE C2

G:\Projects\2007\07-1112-0151 - TCA\Adelaide\WindFarm\GIS\MapDocs\Draft\February2009\Edits\Archaeology\FieldMap_C2.mxd

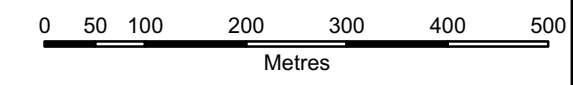


- LEGEND**
- Turbine Layout 38
 - Substation
 - Access Road
 - Collector Cable
 - Site Study Area
 - Expressway
 - Major Road
 - Local Road
 - Watercourse, Permanent
 - Watercourse, Intermittent
 - Proposed Laydown / Staging Area
 - Municipal Boundary
 - Waterbody, Permanent
 - Wetland, Permanent
 - Stage 2 Pedestrian Survey, 5m Intervals
 - Disturbed, Not Assessed
 - Archaeological Location, Stage 3 Required
 - Archaeological Location, Stage 2 Only



REFERENCE

Base Data - MNR NRVIS, obtained 2004, CANMAP v2006.4
 Produced by Golder Associates Ltd under licence from Ontario Ministry of Natural Resources, © Queens Printer 2009
 Air Photo - Spring 2006 First Base Solutions.
 Datum: NAD 83 Projection: UTM Zone 17N



PROJECT	STAGE 2 ARCHAEOLOGICAL ASSESSMENT NEXTERA ADELAIDE WIND FARM GEO. TWP. OF ADELAIDE, MIDDLESEX COUNTY, ONTARIO		
TITLE	STAGE 2 METHODS AND RESULTS		
	PROJECT NO.	07-1112-0151	SCALE AS SHOWN
	DESIGN	PP 05 Mar. 2008	REV. 0
	GIS	PP 16 Nov. 2009	
	CHECK		
	REVIEW		

TILE D

G:\Projects\2007\07-1112-0151 - TCA Adelaide Wind Farm\GIS\MapDocs\Draft\February2009\Edits\Archaeology\FieldMap_D.mxd