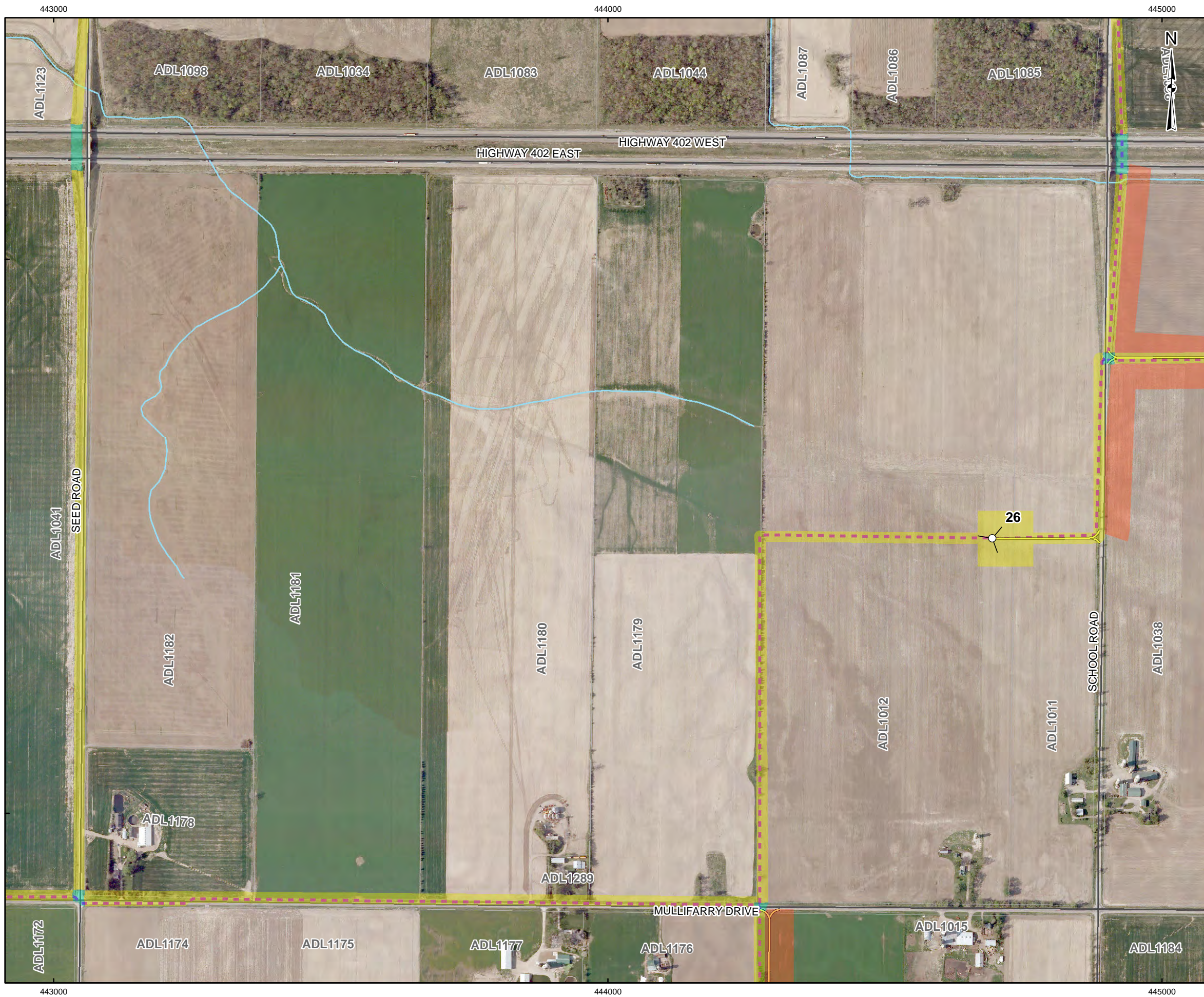


G:\Projects\201111-1154-0021_NextEra_Adelaide\GIS\XDs\Reporting\Archaeology\Stage2Survey\Results\Fig - 4-16 STAGE 2 SURVEY METHODS.mxd



LEGEND

- 1 Photographic Direction
- Turbine Layout
- Collector Cable
- Access Road
- Roads
- Railways
- Utility Line
- Watercourse
- Previously Assessed and Reported
- Stage 2 Pedestrian Survey at 5m Intervals
- Disturbed Area - Not Assessed
- Land Parcel
- Substation
- Waterbody
- Wetland

REFERENCE

Base Data - MNR NRVIS, obtained 2004, CANMAP v2006.4
 Produced by Golder Associates Ltd under licence from
 Ontario Ministry of Natural Resources, © Queens Printer 2008
 Projection: Transverse Mercator Datum: NAD 83 Coordinate System: UTM Zone 17N

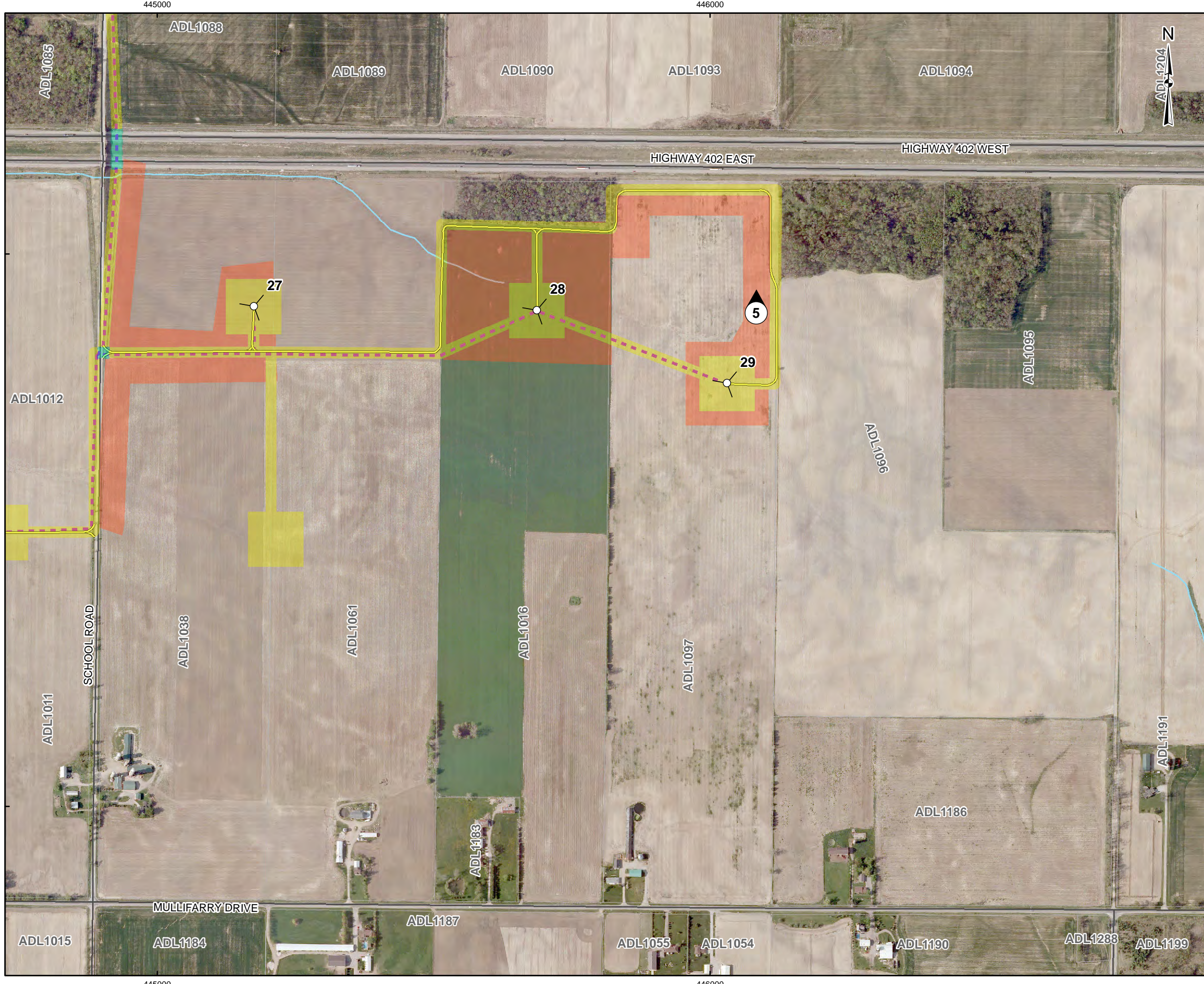


PROJECT	STAGE 2 ARCHAEOLOGICAL ASSESSMENT ADELAIDE WIND ENERGY CENTRE MIDDLESEX COUNTY, ONTARIO		
TITLE	STAGE 2 SURVEY METHODS		
	PROJECT NO. 11-1154-002	SCALE AS SHOWN	REV. 0.0
	DESIGN JMC	2 Feb. 2012	
	GIS JMC	17 Feb. 2012	
	CHECK JM	17 Feb. 2012	
	REVIEW JM	17 Feb. 2012	



FIGURE: 4-16

G:\Projects\2011\11-1154-0021_NextEra_Adelaide\GIS\XDs\Reporting\Archaeology\Stage2Survey\Results\Fig - 4-17 STAGE 2 SURVEY METHODS.mxd



LEGEND

- Photographic Direction
- Turbine Layout
- Collector Cable
- Access Road
- Roads
- Railways
- Utility Line
- Watercourse
- Previously Assessed and Reported
- Stage 2 Pedestrian Survey at 5m Intervals
- Disturbed Area - Not Assessed
- Land Parcel
- Substation
- Waterbody
- Wetland

REFERENCE

Base Data - MNR NRVIS, obtained 2004, CANMAP v2006.4
 Produced by Golder Associates Ltd under licence from
 Ontario Ministry of Natural Resources, © Queens Printer 2008
 Projection: Transverse Mercator Datum: NAD 83 Coordinate System: UTM Zone 17N

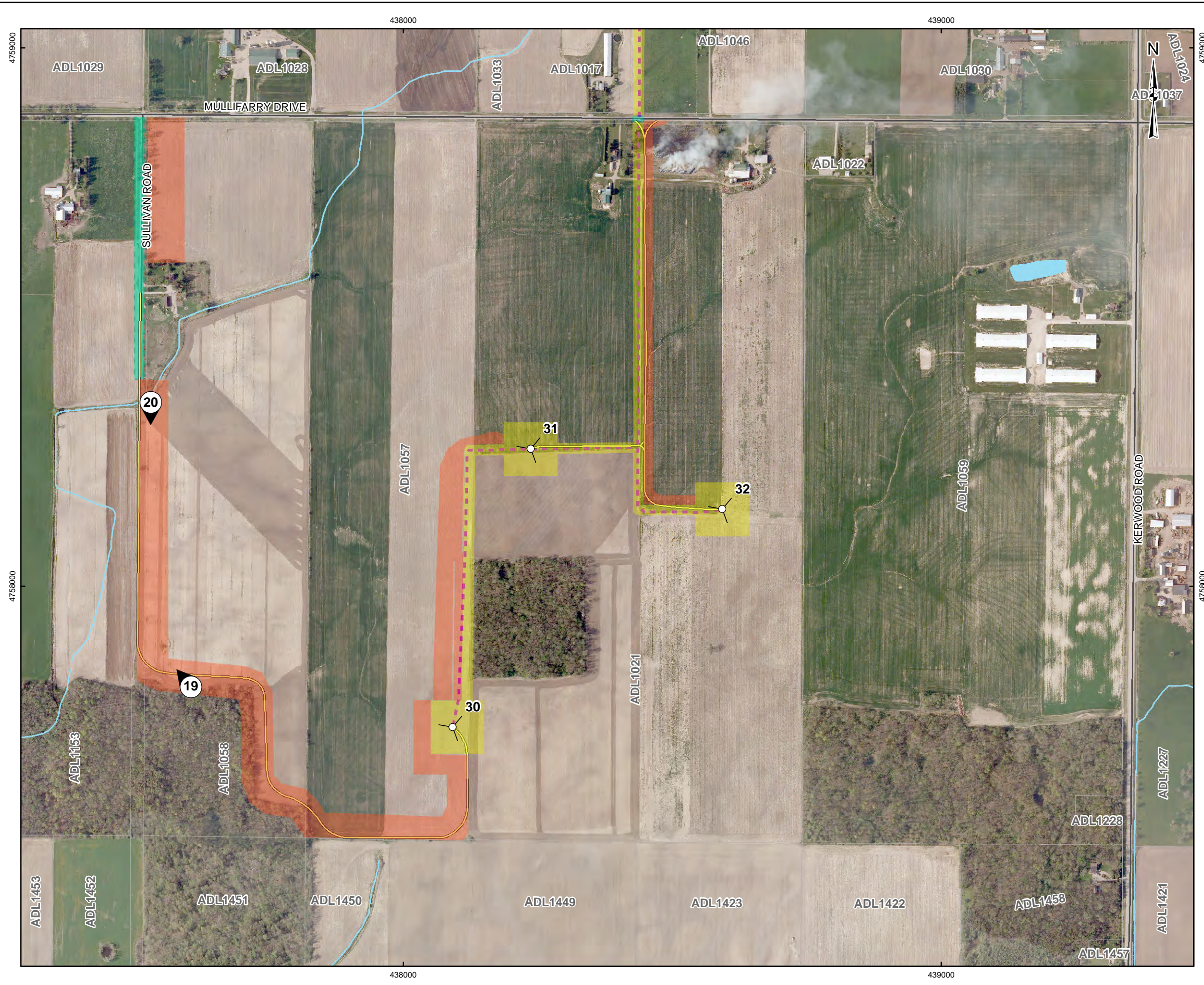
0 70 140 280 420
 Scale: 1:7,000 Meters

PROJECT	STAGE 2 ARCHAEOLOGICAL ASSESSMENT ADELAIDE WIND ENERGY CENTRE MIDDLESEX COUNTY, ONTARIO		
TITLE	STAGE 2 SURVEY METHODS		
	PROJECT NO. 11-1154-002	SCALE AS SHOWN	REV. 0.0
	DESIGN JMC	2 Feb. 2012	
	GIS JMC	17 Feb. 2012	
	CHECK JM	17 Feb. 2012	
	REVIEW JM	17 Feb. 2012	



FIGURE: 4-17

G:\Projects\201111-1154-0021_NextEra_Adelaide\GIS\XDs\Reporting\Archaeology\Stage2Survey\Results\Fig - 4-18 STAGE 2 SURVEY METHODS.mxd



LEGEND

- Photographic Direction
- Turbine Layout
- Collector Cable
- Access Road
- Roads
- Railways
- Utility Line
- Watercourse
- Previously Assessed and Reported
- Stage 2 Pedestrian Survey at 5m Intervals
- Disturbed Area - Not Assessed
- Land Parcel
- Substation
- Waterbody
- Wetland

REFERENCE

Base Data - MNR NRVIS, obtained 2004, CANMAP v2006.4
 Produced by Golder Associates Ltd under licence from
 Ontario Ministry of Natural Resources, © Queens Printer 2008
 Projection: Transverse Mercator Datum: NAD 83 Coordinate System: UTM Zone 17N

0 70 140 280 420
 Scale: 1:7,000 Meters

PROJECT	STAGE 2 ARCHAEOLOGICAL ASSESSMENT ADELAIDE WIND ENERGY CENTRE MIDDLESEX COUNTY, ONTARIO		
TITLE	STAGE 2 SURVEY METHODS		
Golder Associates Mississauga, Ontario	PROJECT NO.	11-1154-002	SCALE AS SHOWN
	DESIGN	JMC 2 Feb. 2012	REV. 0.0
	GIS	JMC 17 Feb. 2012	
	CHECK	JM 17 Feb. 2012	
	REVIEW	JM 17 Feb. 2012	

FIGURE: 4-18



LEGEND

- 1 Photographic Direction
- Turbine Layout
- Collector Cable
- Access Road
- Roads
- Railways
- Utility Line
- Watercourse
- Previously Assessed and Reported
- Stage 2 Pedestrian Survey at 5m Intervals
- Disturbed Area - Not Assessed
- Land Parcel
- Substation
- Waterbody
- Wetland

REFERENCE

Base Data - MNR NRVIS, obtained 2004, CANMAP v2006.4
 Produced by Golder Associates Ltd under licence from
 Ontario Ministry of Natural Resources, © Queens Printer 2008
 Projection: Transverse Mercator Datum: NAD 83 Coordinate System: UTM Zone 17N

0 70 140 280 420
 Scale: 1:7,000 Meters

PROJECT	STAGE 2 ARCHAEOLOGICAL ASSESSMENT ADELAIDE WIND ENERGY CENTRE MIDDLESEX COUNTY, ONTARIO		
TITLE	STAGE 2 SURVEY METHODS		
Golder Associates Mississauga, Ontario	PROJECT NO.	11-1154-002	SCALE AS SHOWN
	DESIGN	JMC	2 Feb. 2012
	CHECK	JM	17 Feb. 2012
	REVIEW	JM	17 Feb. 2012
			REV. 0.0
			FIGURE: 4-19