



**LEGEND**

- 1 Photographic Direction
- Turbine Layout
- Collector Cable
- Access Road
- Roads
- Railways
- Utility Line
- Watercourse
- Previously Assessed and Reported
- Stage 2 Pedestrian Survey at 5m Intervals
- Disturbed Area - Not Assessed
- Land Parcel
- Substation
- Waterbody
- Wetland

**REFERENCE**

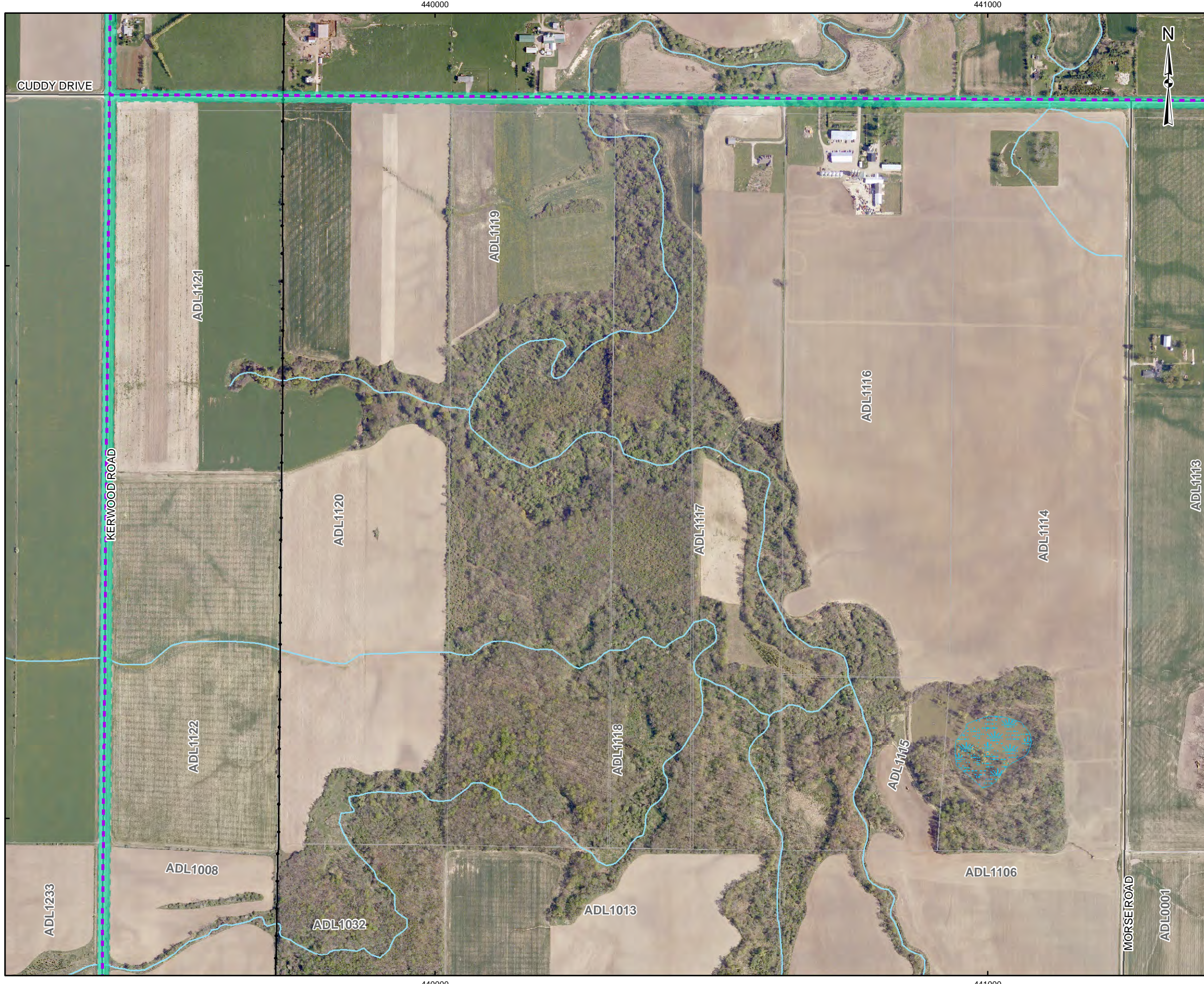
Base Data - MNR NRVIS, obtained 2004, CANMAP v2006.4  
 Produced by Golder Associates Ltd under licence from  
 Ontario Ministry of Natural Resources, © Queens Printer 2008  
 Projection: Transverse Mercator Datum: NAD 83 Coordinate System: UTM Zone 17N



PROJECT	STAGE 2 ARCHAEOLOGICAL ASSESSMENT ADELAIDE WIND ENERGY CENTRE MIDDLESEX COUNTY, ONTARIO			
TITLE	STAGE 2 SURVEY METHODS			
Golder Associates Mississauga, Ontario	PROJECT NO.	11-1154-002	SCALE AS SHOWN	REV. 0.0
	DESIGN	JMC	2 Feb. 2012	
	GIS	JMC	17 Feb. 2012	
	CHECK	JM	17 Feb. 2012	
	REVIEW	JM	17 Feb. 2012	

FIGURE: 4-01

G:\Projects\201111-1154-0021\_NextEra\_Adelaide\GIS\XDs\Reporting\Archaeology\Stage2Survey\Results\Fig - 4-02 STAGE 2 SURVEY METHODS.mxd



**LEGEND**

- Photographic Direction
- Turbine Layout
- Collector Cable
- Access Road
- Roads
- Railways
- Utility Line
- Watercourse
- Previously Assessed and Reported
- Stage 2 Pedestrian Survey at 5m Intervals
- Disturbed Area - Not Assessed
- Land Parcel
- Substation
- Waterbody
- Wetland

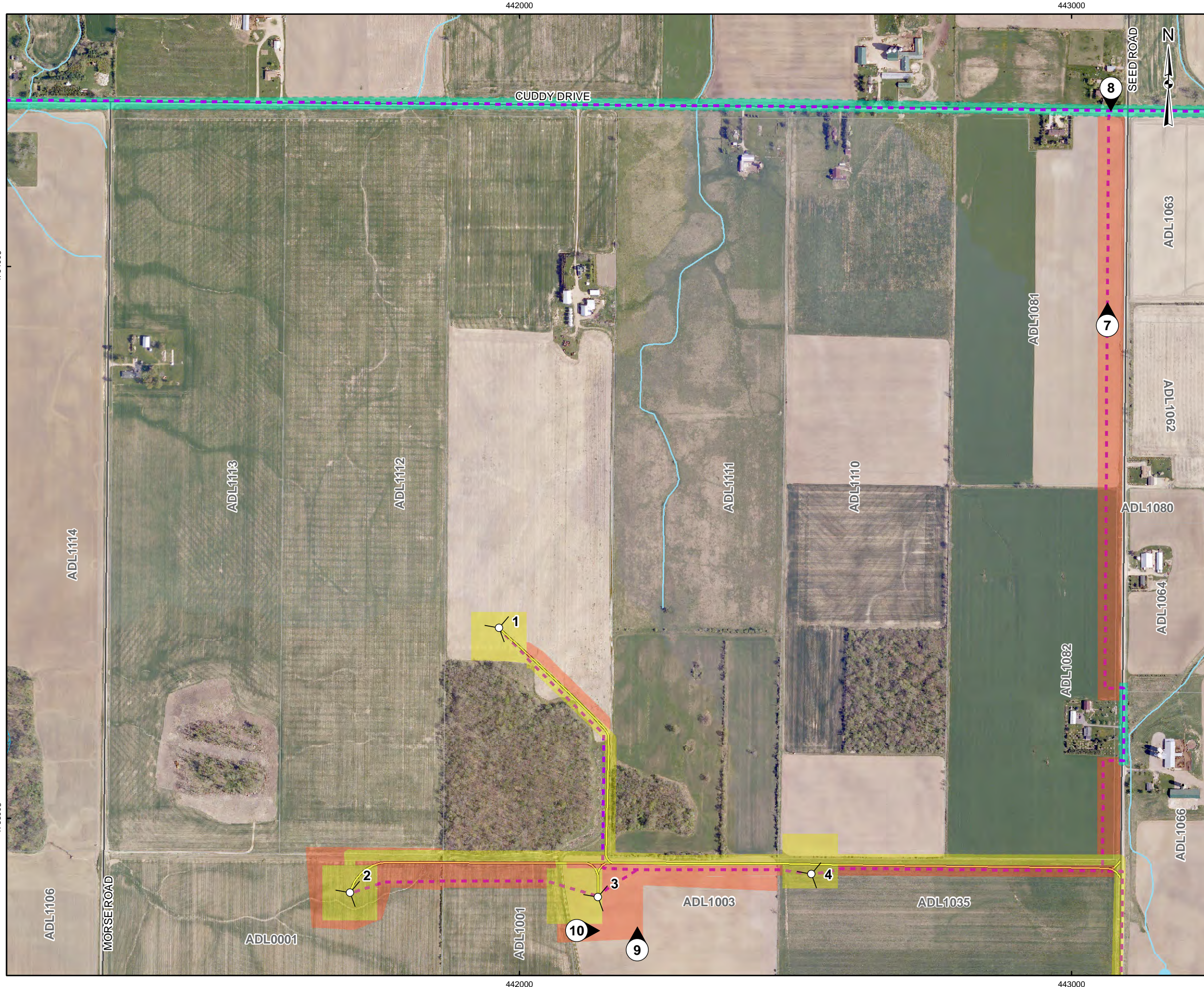
**REFERENCE**

Base Data - MNR NRVIS, obtained 2004, CANMAP v2006.4  
 Produced by Golder Associates Ltd under licence from  
 Ontario Ministry of Natural Resources, © Queens Printer 2008  
 Projection: Transverse Mercator Datum: NAD 83 Coordinate System: UTM Zone 17N

0 70 140 280 420  
 Scale: 1:7,000 Meters

PROJECT	STAGE 2 ARCHAEOLOGICAL ASSESSMENT ADELAIDE WIND ENERGY CENTRE MIDDLESEX COUNTY, ONTARIO			
TITLE	STAGE 2 SURVEY METHODS			
	PROJECT NO.	11-1154-002	SCALE AS SHOWN	REV. 0.0
	DESIGN	JMC	2 Feb. 2012	
	GIS	JMC	17 Feb. 2012	
	CHECK	JM	17 Feb. 2012	
	REVIEW	JM	17 Feb. 2012	

FIGURE: 4-02



**LEGEND**

- Photographic Direction
- Turbine Layout
- Collector Cable
- Access Road
- Roads
- Railways
- Utility Line
- Watercourse
- Previously Assessed and Reported
- Stage 2 Pedestrian Survey at 5m Intervals
- Disturbed Area - Not Assessed
- Land Parcel
- Substation
- Waterbody
- Wetland

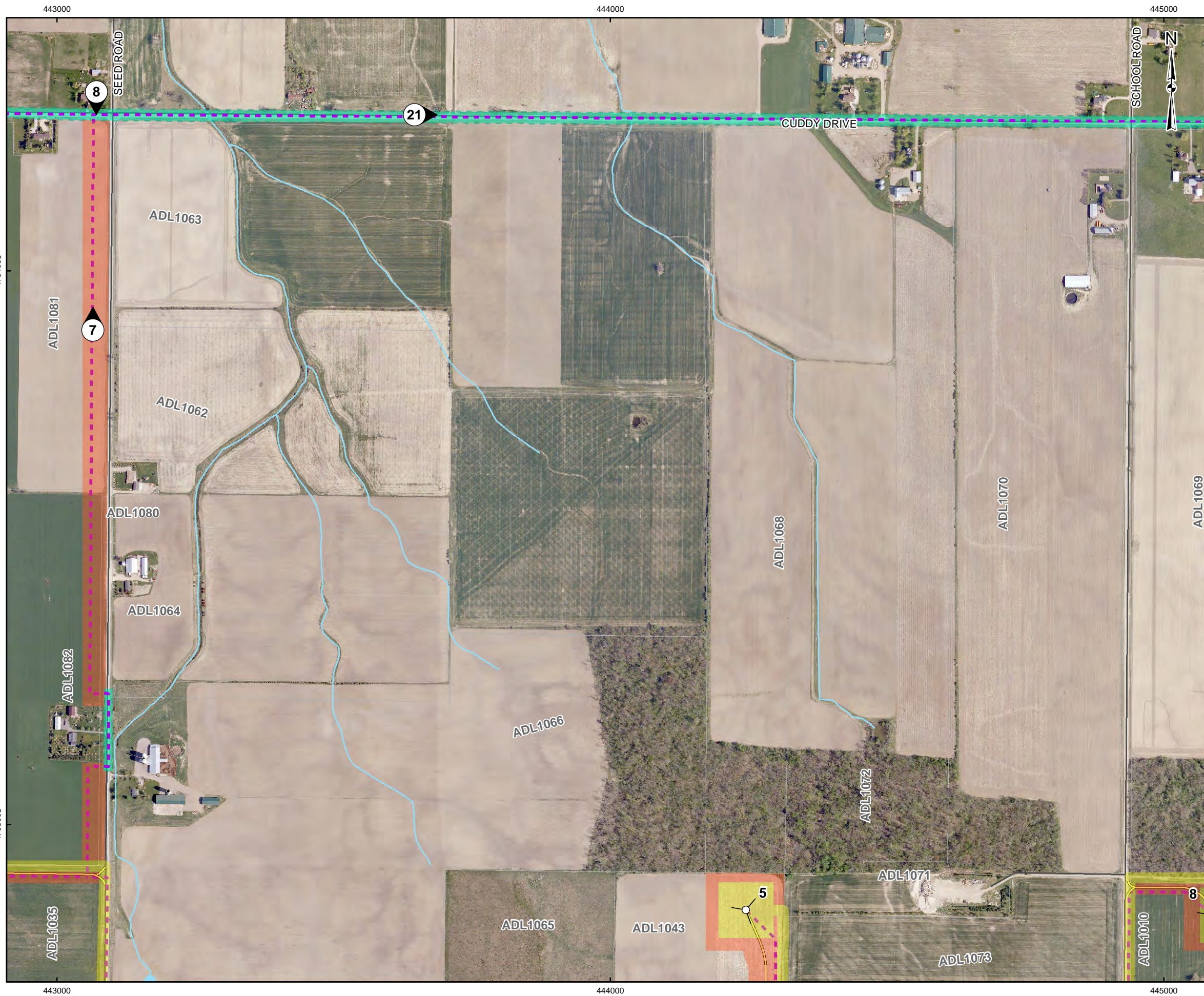
**REFERENCE**

Base Data - MNR NRVIS, obtained 2004, CANMAP v2006.4  
 Produced by Golder Associates Ltd under licence from  
 Ontario Ministry of Natural Resources, © Queens Printer 2008  
 Projection: Transverse Mercator Datum: NAD 83 Coordinate System: UTM Zone 17N



PROJECT	STAGE 2 ARCHAEOLOGICAL ASSESSMENT ADELAIDE WIND ENERGY CENTRE MIDDLESEX COUNTY, ONTARIO		
TITLE	STAGE 2 SURVEY METHODS		
 Mississauga, Ontario	PROJECT NO.	11-1154-002	SCALE AS SHOWN
	DESIGN	JMC 2 Feb. 2012	REV. 0.0
	GIS	JMC 17 Feb. 2012	
	CHECK	JM 17 Feb. 2012	
	REVIEW	JM 17 Feb. 2012	

FIGURE: 4-03



**LEGEND**

- Photographic Direction
- Turbine Layout
- Collector Cable
- Access Road
- Roads
- Railways
- Utility Line
- Watercourse
- Previously Assessed and Reported
- Stage 2 Pedestrian Survey at 5m Intervals
- Disturbed Area - Not Assessed
- Land Parcel
- Substation
- Waterbody
- Wetland

**REFERENCE**

Base Data - MNR NRVIS, obtained 2004, CANMAP v2006.4  
 Produced by Golder Associates Ltd under licence from  
 Ontario Ministry of Natural Resources, © Queens Printer 2008  
 Projection: Transverse Mercator Datum: NAD 83 Coordinate System: UTM Zone 17N



PROJECT	STAGE 2 ARCHAEOLOGICAL ASSESSMENT ADELAIDE WIND ENERGY CENTRE MIDDLESEX COUNTY, ONTARIO		
TITLE	STAGE 2 SURVEY METHODS		
	PROJECT NO. 11-1154-002	SCALE AS SHOWN	REV. 0.0
	DESIGN JMC	2 Feb. 2012	
	GIS JMC	17 Feb. 2012	
	CHECK JM	17 Feb. 2012	
	REVIEW JM	17 Feb. 2012	



FIGURE: 4-04