

G:\Projects\2008\08-1136-0180 Bruce to Milton Transmission Line Reinforcement\GIS\MXDs\Draft\OBM\Treaty_Area.mxd



LEGEND

- Treaty Boundary
- Approximate Location of Study Area

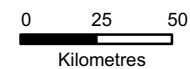
Treaty No. 381, Volume 3 (May 9th, 1781): Mississauga and Chippewa
Crawford's Purchase (Oct. 9th, 1783): Algonquin and Iroquois
Crawford's Purchase (Oct. 9th, 1783): Mississauga
Crawford's Purchases (1784, 1787, 1788): Mississauga
John Collins' Purchase (1785): Chippewa
Treaty No. 2 (May 19th, 1790): Odawa, Chippewa, Pottawatomi, and Huron
Treaty No. 3 (Dec. 2nd, 1792): Mississauga
Haldimand Tract: from the Crown to the Mohawk (1793)
Tyendinaga: from the Crown to the Mohawk (1793)
Treaty No. 3 1/4 (Oct. 24th, 1795): from the Crown to Joseph Brant
Treaty No. 5 (May 22nd, 1798): Chippewa
Treaty No. 6 (Sep. 7th, 1796): Chippewa
Treaty No. 7 (Sep. 7th, 1796): Chippewa
Treaty No. 13 (Aug. 1st, 1805): Mississauga
Treaty No. 13A (Aug. 2nd, 1805): Mississauga
Treaty No. 16 (Nov. 18th, 1815): Chippewa
Treaty No. 18 (Oct. 17th, 1818): Chippewa
Treaty No. 19 (Oct. 28th, 1818): Chippewa
Treaty No. 20 (Nov. 5th, 1818): Chippewa
Treaty No. 21 (Mar. 9th, 1819): Chippewa
Treaty No. 27 (May 31st, 1819): Mississauga
Treaty No. 27 1/2 (Apr. 25th, 1825): Ojibwa and Chippewa
Treaty No. 35 (Aug. 13th, 1833): Wyandot or Huron
Treaty No. 45 (Aug. 9th, 1836): Chippewa and Odawa
Treaty No. 45 1/2 (Aug. 9th, 1836): Saugeen
Treaty No. 57 (Jun. 1st, 1847): Iroquois of St. Regis
Treaty No. 61, Robinson Treaty (Sep. 9th, 1850): Ojibwa
Treaty No. 72 (Oct. 30th, 1854): Chippewa
Treaty No. 82 (Feb. 9th, 1857): Chippewa
Williams Treaty (Oct. 31st and Nov. 15th, 1923): Chippewa and Mississauga
Williams Treaty (Oct. 31st, 1923): Chippewa

NOTES

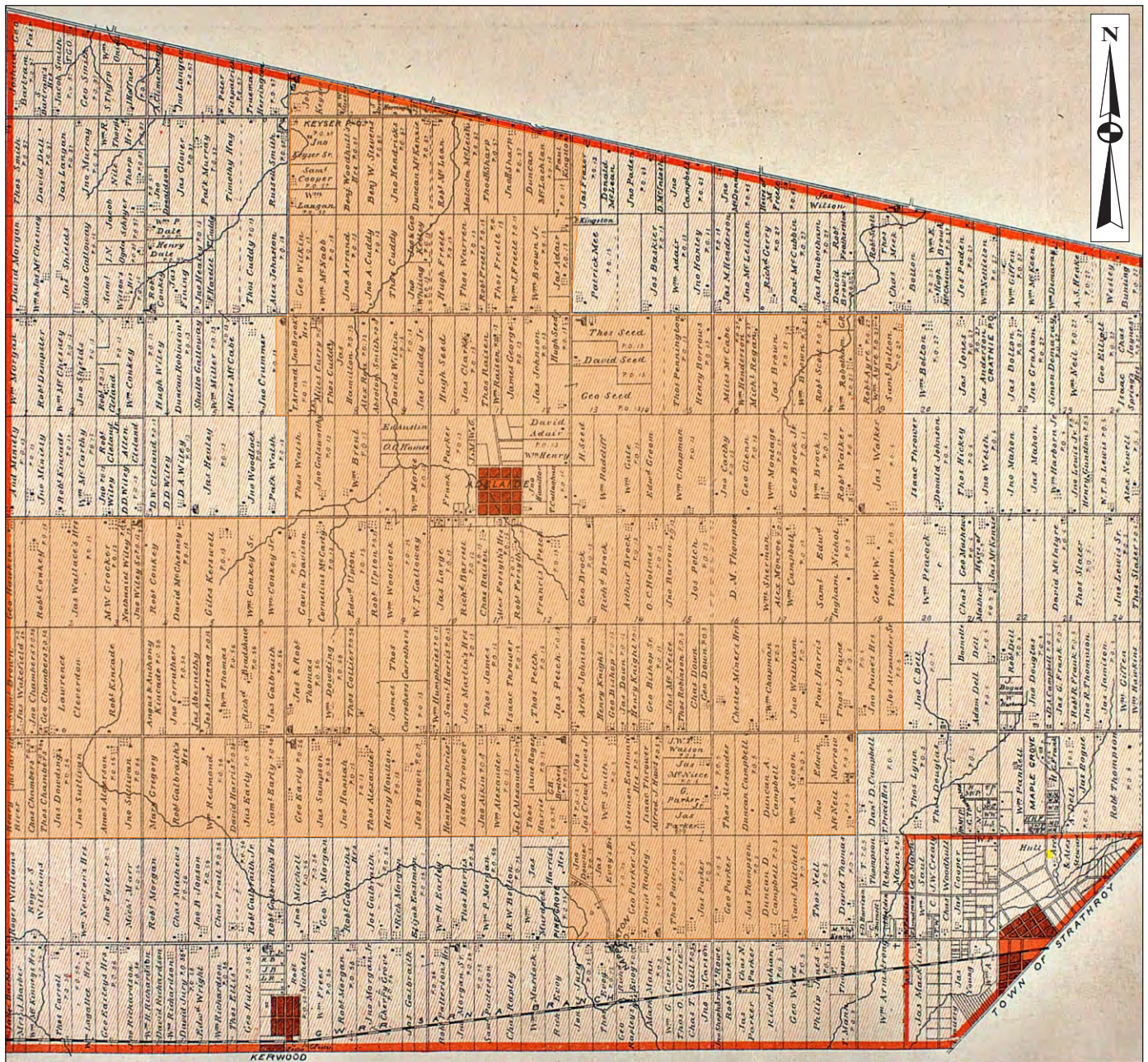
This drawing is schematic only and is to be read in conjunction with accompanying text. All locations are approximate.

REFERENCE

1. Base Data - MNR NRVIS, obtained 2004, CANMAP v2006.4
 2. Treaty Boundary - Approximate Treaty Boundary was created by Golder Associates Ltd. Jan. 2009.
- MORRIS, J.L. 1943. Indians Of Ontario. Reprinted 1964. Department Of Lands And Forests, Toronto.
- Produced by Golder Associates Ltd under licence from Ontario Ministry of Natural Resources, © Queens Printer 2008
- Projection: Transverse Mercator Datum: NAD 83 Coordinate System: UTM Zone 17



PROJECT	Stage 2 Archaeological Assessment Adelaide Wind Energy Centre Middlesex County, Ontario		
TITLE	Treaty Boundaries Based on Morris 1943		
 Golder Associates Mississauga, Ontario	PROJECT No. 11-1154-0021	1:2,500,000	REV. 0.0
	DESIGN JMC 15 Dec. 2008	FIGURE 2	
	GIS JMC 23 Jan. 2009		
	CHECK		
REVIEW			



LEGEND

 Study Area

REFERENCE

DRAWING BASED ON
 H.R. Page and Company
 1878 *Illustrated Historical Atlas of the County of Middlesex*.
 1972 reprint. Edward Phelps, Sarnia.

NOTES

THIS DRAWING IS SCHEMATIC ONLY AND IS TO BE READ
 IN CONJUNCTION WITH ACCOMPANYING TEXT.

ALL LOCATIONS ARE APPROXIMATE.

PROJECT **Stage 2 Archaeological Assessment
 Adelaide Wind Energy
 Middlesex County, Ontario**

TITLE **A Portion of the Historic Map of the
 Township of Adelaide in the 1878
 Illustrated Historical Atlas of the County of Middlesex**



PROJECT No.	11-1154-0021	FILE No.	1111540021-2000-R01003
CADD	JM	DATE	FEB 15/12
CHECK		SCALE	NOT TO SCALE. REV.
			FIGURE 3



LEGEND

- Place
- Roads
- Waterbody

REFERENCE

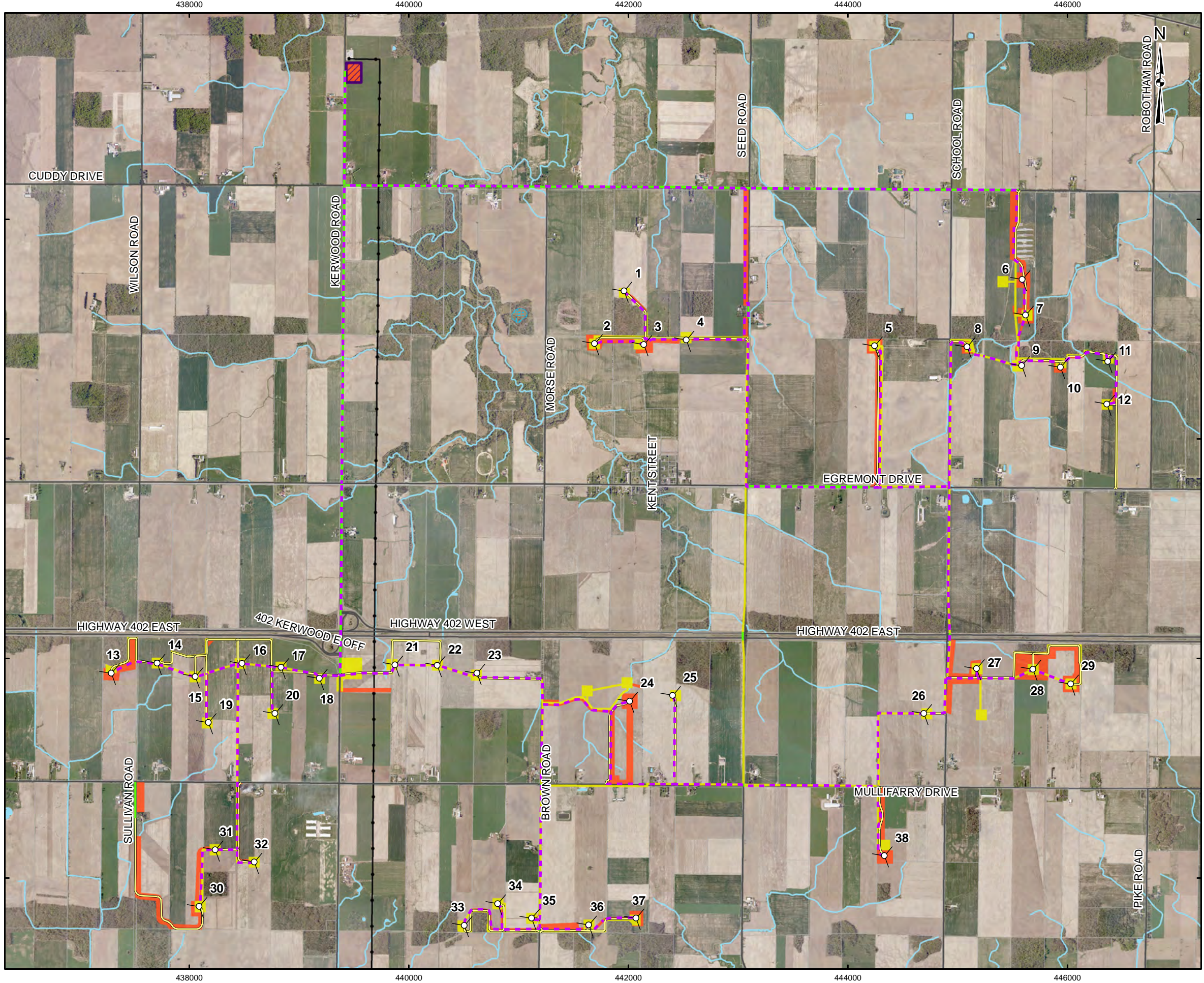
Base Data - MNR NRVIS, obtained 2004
 Produced by Golder Associates Ltd under licence from
 Ontario Ministry of Natural Resources, © Queens Printer 2008
 Projection: Transverse Mercator Datum: NAD 83 Coordinate System: UTM Zone 17N



PROJECT STAGE 2 ARCHAEOLOGICAL ASSESSMENT ADELAIDE WIND ENERGY CENTRE MIDDLESEX COUNTY, ONTARIO			
TITLE KEY PLAN			
 Golder Associates Mississauga, Ontario	PROJECT NO. 11-1154-0021	SCALE AS SHOWN	REV. 0.0
	DESIGN JMC 6 Feb. 2012	<div style="font-size: 2em; font-weight: bold;">FIGURE: 4-A</div>	
	GIS JMC 17 Feb. 2012		
	CHECK JM 17 Feb. 2012		
REVIEW JM 17 Feb. 2012			

G:\Projects\2011\11-1154-0021_NextEra_Adelaide\GIS\Reporting\Archaeology\Stage2\SurveyResults\KeyPlan.mxd

G:\Projects\2011\11-1154-0021_NextEra_Adelaida\GIS\Reporting\Archaeology\Stage2Survey\Results\Stage2SurveyMethods.mxd

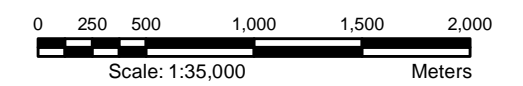


LEGEND

- Turbine Layout
- Collector Cable
- Access Road
- Roads
- Railways
- Utility Line
- Watercourse
- Previously Assessed and Reported
- Stage 2 Pedestrian Survey at 5m Intervals
- Disturbed Area - Not Assessed
- Land Parcel
- Substation
- Waterbody
- Wetland

REFERENCE

Base Data - MNR NRVIS, obtained 2004, CANMAP v2006.4
 Produced by Golder Associates Ltd under licence from
 Ontario Ministry of Natural Resources, © Queens Printer 2008
 Projection: Transverse Mercator Datum: NAD 83 Coordinate System: UTM Zone 17N



PROJECT	STAGE 2 ARCHAEOLOGICAL ASSESSMENT ADELAIDE WIND ENERGY CENTRE MIDDLESEX COUNTY, ONTARIO		
TITLE	STAGE 2 SURVEY METHODS OVERVIEW		
 Mississauga, Ontario	PROJECT NO.	11-1154-0021	SCALE AS SHOWN
	DESIGN	JMC 2 Feb. 2012	REV. 0.0
	GIS	BC 5 Apr. 2012	
	CHECK	JM 5 Apr. 2012	
	REVIEW	JM 5 Apr. 2012	

FIGURE: 4-B