

G:\Projects\2011\11-1154-0030_BornishWindFarm\GIS\MapXDs\Reporting\Archaeology\Stage1_2\ParkhillPOIESASStudyMethods_02.mxd



LEGEND

- 1 Photographic Direction
- Roads
- Railways
- Utility Line
- Watercourse
- Proposed Point of Interconnection Study Area
- Transmission Line ROW
- Scatter Size Area
- Stage 2 Pedestrian Survey at 5m Intervals
- Disturbed Area - Not Assessed
- Waterbody
- Wetland
- Land Parcel

REFERENCE

Base Data - MNR LIO, obtained 2009
 Produced by Golder Associates Ltd under licence from
 Ontario Ministry of Natural Resources, © Queens Printer 2012
 Projection: Transverse Mercator Datum: NAD 83 Coordinate System: UTM Zone 17

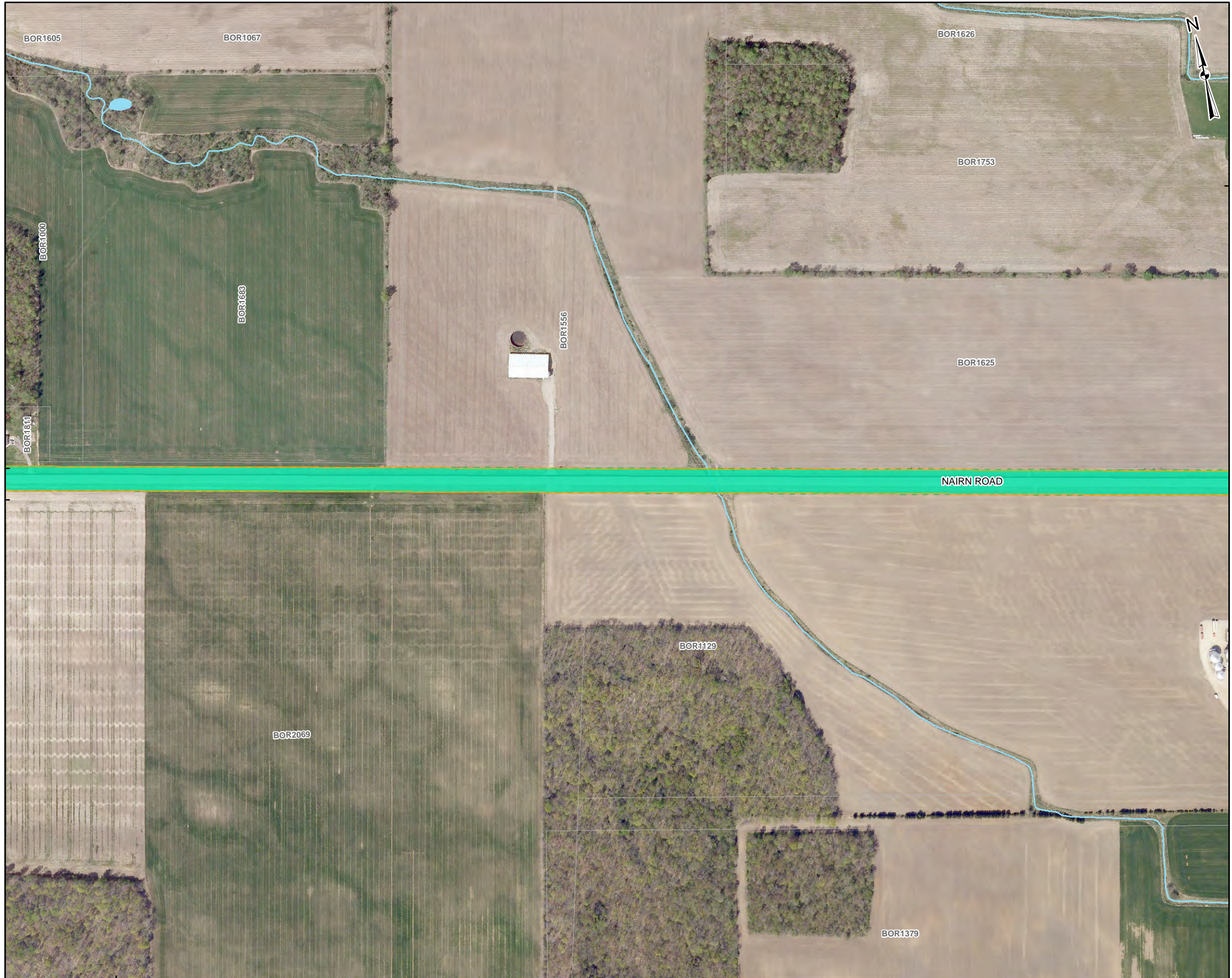


PROJECT STAGE 1-2 ARCHAEOLOGICAL ASSESSMENT, PARKHILL POINT OF INTERCONNECT, MIDDLESEX COUNTY, ONTARIO			
TITLE STAGE 2 SURVEY METHODS			
 Mississauga, Ontario	PROJECT NO.	11-1154-0030	SCALE AS SHOWN
	DESIGN	JMC 1 Feb. 2012	REV. 0.0
	GIS	JMC 2 Feb. 2012	
	CHECK	SM 2 Feb. 2012	
	REVIEW	JM 2 Feb. 2012	

FIGURE: 6-02

G:\Projects\2011\11-1154-0030_BornishWindFarm\GIS\MapXDs\Reporting\Archaeology\Stage1_2\ParkhillPOI\ESASStudyMethods_03.mxd

444000 4776000



444000

LEGEND

- Photographic Direction
- Roads
- Railways
- Utility Line
- Watercourse
- Proposed Point of Interconnection Study Area
- Transmission Line ROW
- Scatter Size Area
- Stage 2 Pedestrian Survey at 5m Intervals
- Disturbed Area - Not Assessed
- Waterbody
- Wetland
- Land Parcel

REFERENCE

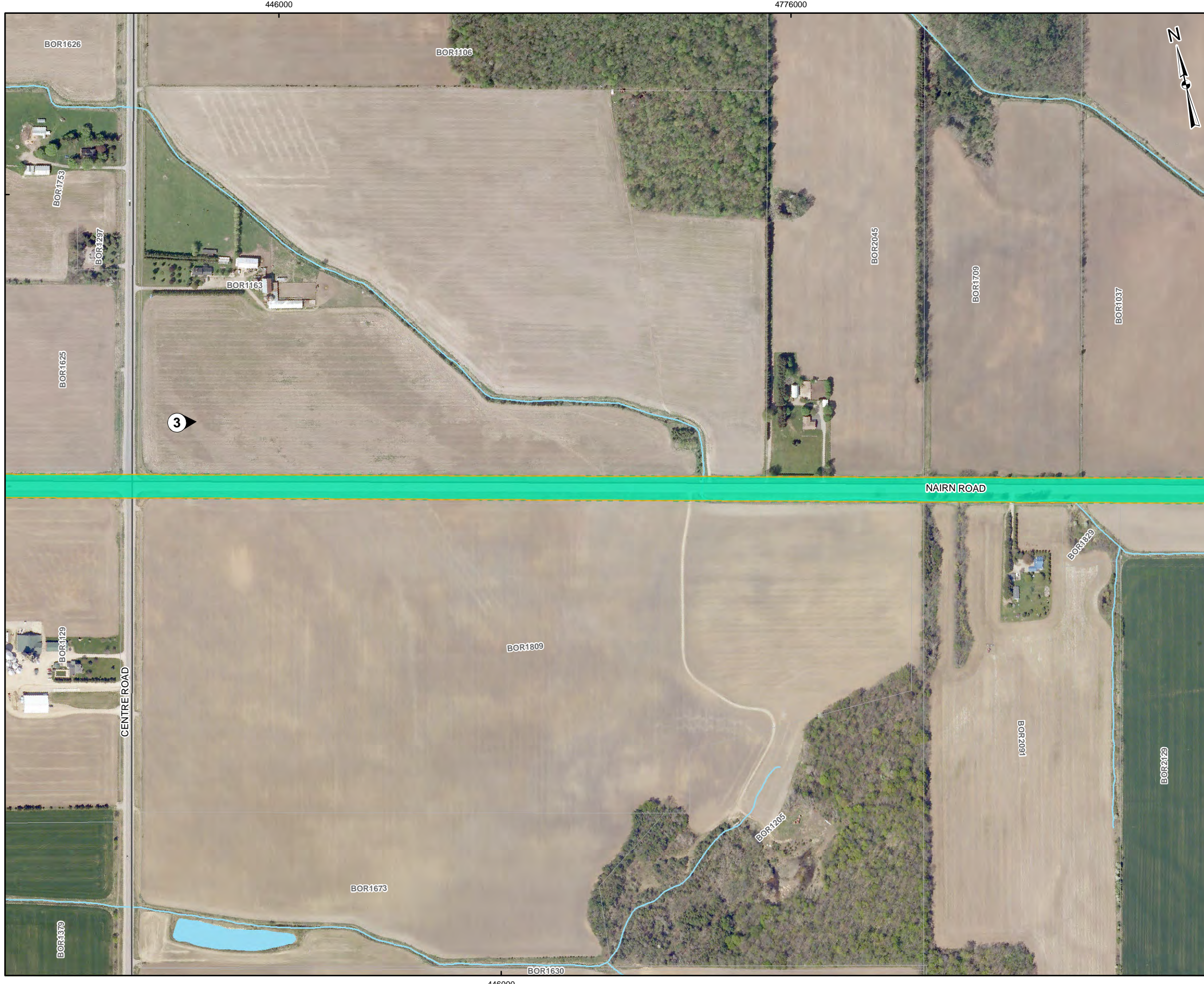
Base Data - MNR LIO, obtained 2009
 Produced by Golder Associates Ltd under licence from
 Ontario Ministry of Natural Resources, © Queens Printer 2012
 Projection: Transverse Mercator Datum: NAD 83 Coordinate System: UTM Zone 17



PROJECT STAGE 1-2 ARCHAEOLOGICAL ASSESSMENT, PARKHILL POINT OF INTERCONNECT, MIDDLESEX COUNTY, ONTARIO			
TITLE STAGE 2 SURVEY METHODS			
 Mississauga, Ontario	PROJECT NO.	11-1154-0030	SCALE AS SHOWN
	DESIGN	JMC 1 Feb. 2012	REV. 0.0
	GIS	JMC 2 Feb. 2012	
	CHECK	SM 2 Feb. 2012	
	REVIEW	JM 2 Feb. 2012	

FIGURE: 6-03

G:\Projects\2011\11-1154-0030_BornishWindFarm\GIS\MapDocs\Reporting\Archaeology\Stage1_2\ParkhillPOIESASStudyMethods_04.mxd



LEGEND

- Photographic Direction
- Roads
- Railways
- Utility Line
- Watercourse
- Proposed Point of Interconnection Study Area
- Transmission Line ROW
- Scatter Size Area
- Stage 2 Pedestrian Survey at 5m Intervals
- Disturbed Area - Not Assessed
- Waterbody
- Wetland
- Land Parcel

REFERENCE

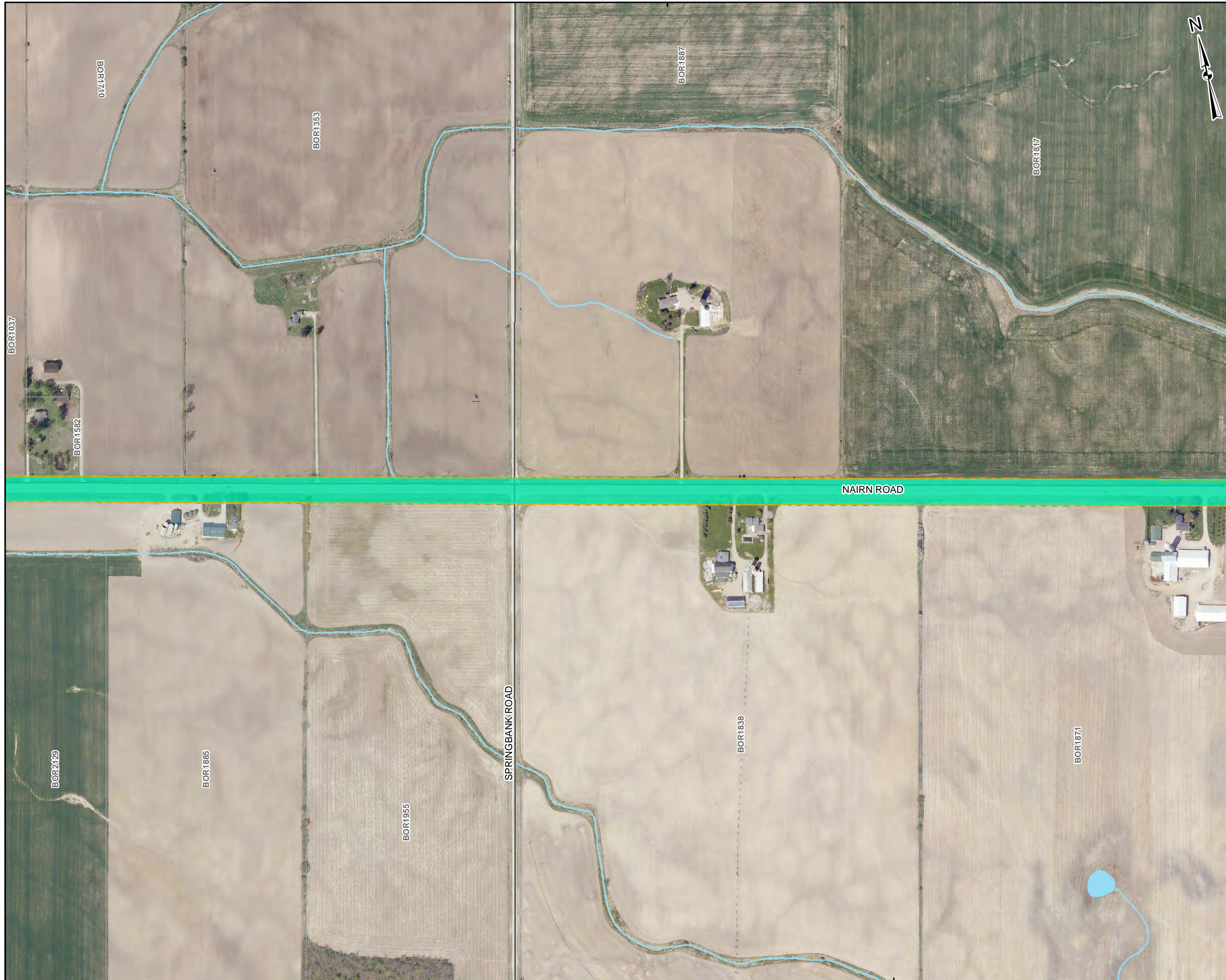
Base Data - MNR LIO, obtained 2009
 Produced by Golder Associates Ltd under licence from
 Ontario Ministry of Natural Resources, © Queens Printer 2012
 Projection: Transverse Mercator Datum: NAD 83 Coordinate System: UTM Zone 17



PROJECT STAGE 1-2 ARCHAEOLOGICAL ASSESSMENT, PARKHILL POINT OF INTERCONNECT, MIDDLESEX COUNTY, ONTARIO			
TITLE STAGE 2 SURVEY METHODS			
 Golder Associates Mississauga, Ontario	PROJECT NO.	11-1154-0030	SCALE AS SHOWN
	DESIGN	JMC	1 Feb. 2012
	GIS	JMC	2 Feb. 2012
	CHECK	SM	2 Feb. 2012
	REVIEW	JM	2 Feb. 2012
			REV. 0.0

FIGURE: 6-04

448000



448000

LEGEND

- 1 Photographic Direction
- Roads
- Railways
- Utility Line
- Watercourse
- Proposed Point of Interconnection Study Area
- Transmission Line ROW
- Scatter Size Area
- Stage 2 Pedestrian Survey at 5m Intervals
- Disturbed Area - Not Assessed
- Waterbody
- Wetland
- Land Parcel

REFERENCE

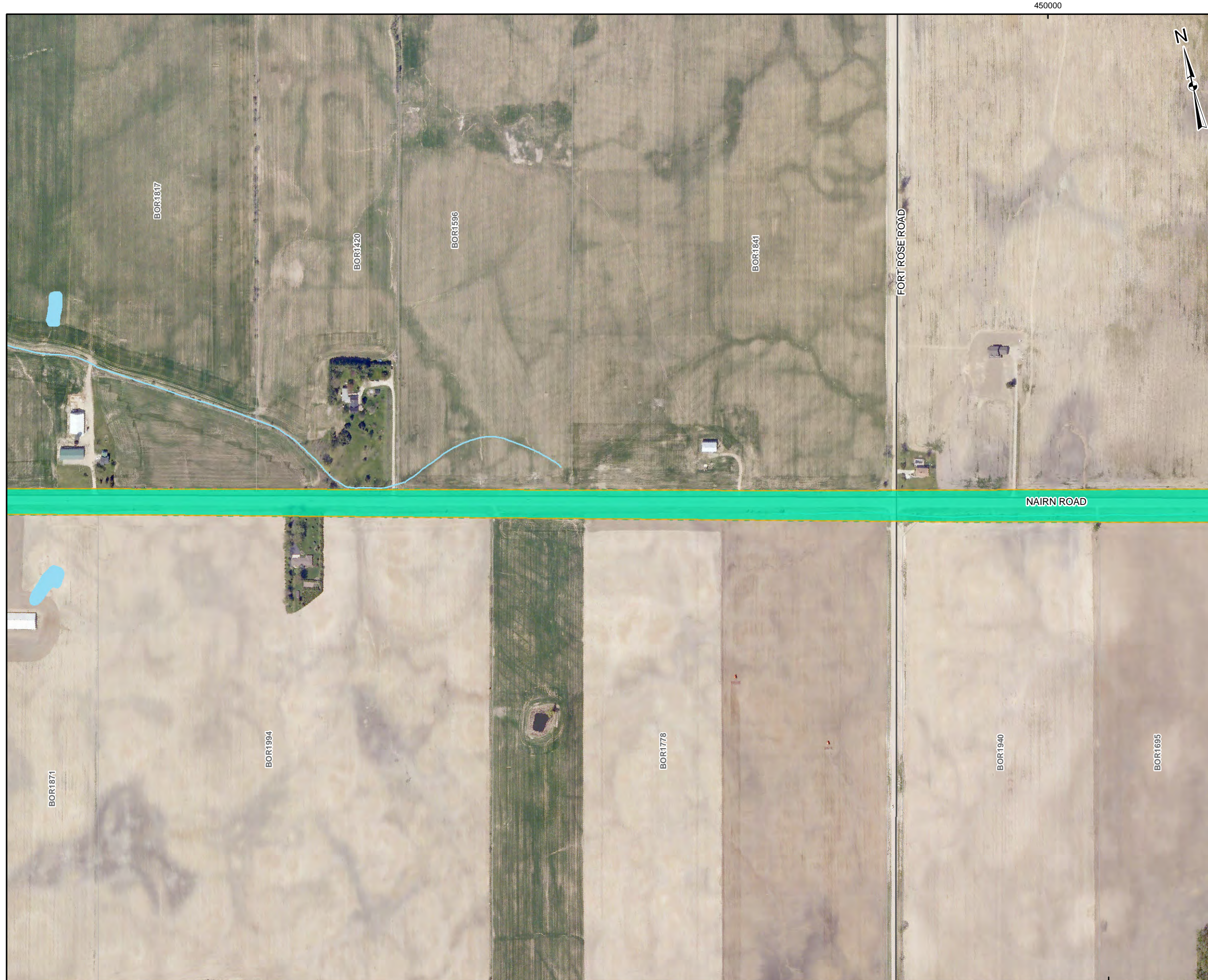
Base Data - MNR LIO, obtained 2009
 Produced by Golder Associates Ltd under licence from
 Ontario Ministry of Natural Resources, © Queens Printer 2012
 Projection: Transverse Mercator Datum: NAD 83 Coordinate System: UTM Zone 17



PROJECT STAGE 1-2 ARCHAEOLOGICAL ASSESSMENT, PARKHILL POINT OF INTERCONNECT, MIDDLESEX COUNTY, ONTARIO			
TITLE STAGE 2 SURVEY METHODS			
 Golder Associates Mississauga, Ontario	PROJECT NO.	11-1154-0030	SCALE AS SHOWN
	DESIGN	JMC	1 Feb. 2012
	GIS	JMC	2 Feb. 2012
	CHECK	SM	2 Feb. 2012
	REVIEW	JM	2 Feb. 2012
			REV. 0.0

FIGURE: 6-05

G:\Projects\2011\11-1154-0030_BornishWindFarm\GIS\MapXDs\Reporting\Archaeology\Stage1_2\ParkhillPOIESASStudyMethods_06.mxd



LEGEND

- Photographic Direction
- Roads
- Railways
- Utility Line
- Watercourse
- Proposed Point of Interconnection Study Area
- Transmission Line ROW
- Scatter Size Area
- Stage 2 Pedestrian Survey at 5m Intervals
- Disturbed Area - Not Assessed
- Waterbody
- Wetland
- Land Parcel

REFERENCE

Base Data - MNR LIO, obtained 2009
 Produced by Golder Associates Ltd under licence from
 Ontario Ministry of Natural Resources, © Queens Printer 2012
 Projection: Transverse Mercator Datum: NAD 83 Coordinate System: UTM Zone 17



PROJECT **STAGE 1-2 ARCHAEOLOGICAL ASSESSMENT,
 PARKHILL POINT OF INTERCONNECT,
 MIDDLESEX COUNTY, ONTARIO**

TITLE **STAGE 2 SURVEY METHODS**

	PROJECT NO. 11-1154-0030		SCALE AS SHOWN	REV. 0.0
	DESIGN	JMC	1 Feb. 2012	FIGURE: 6-06
	GIS	JMC	2 Feb. 2012	
	CHECK	SM	2 Feb. 2012	
	REVIEW	JM	2 Feb. 2012	