

**LEGEND**

 STUDY AREA

**REFERENCE**

DRAWING BASED ON  
 Page H.R. & Co.  
 1878 *Illustrated Historical Atlas of the County of Middlesex, Ontario.*  
 H.R. Page & Co., Toronto.

**NOTES**

THIS DRAWING IS SCHEMATIC ONLY AND IS TO BE READ IN CONJUNCTION WITH ACCOMPANYING TEXT.  
 ALL LOCATIONS ARE APPROXIMATE.

PROJECT  
**STAGE 1-2 ARCHAEOLOGICAL ASSESSMENT,  
 PARKHILL POINT OF INTERCONNECT,  
 MIDDLESEX COUNTY, ONTARIO**

TITLE  
**A PORTION OF THE TOWNSHIP OF WEST WILLIAMS  
 IN THE 1878 ILLUSTRATED HISTORICAL ATLAS**



PROJECT No.	11-1154-0030-2000	FILE No.	1111540030-2000-R02004
CADD	SWJM	Feb. 2/12	SCALE NOT TO SCALE REV.
CHECK			<b>FIGURE 4</b>

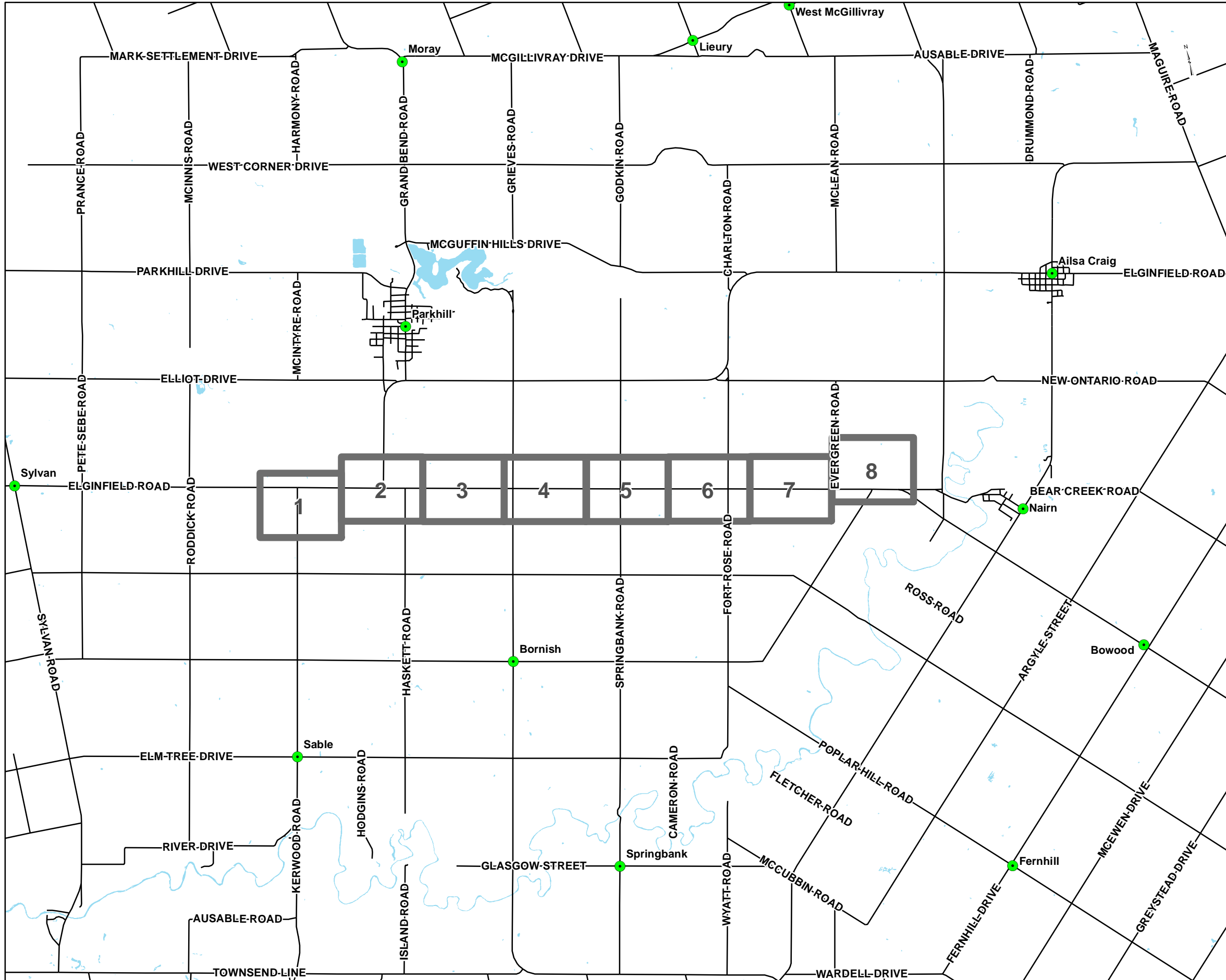


---

## STAGES 1 AND 2 ARCHAEOLOGICAL ASSESSMENT, PARKHILL POI, MIDDLESEX COUNTY, ONTARIO

---

*Figure 5: Stage 2 Survey Methods and Results for the Parkhill POI (see Supplementary Document A)*

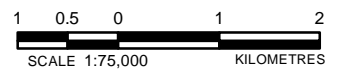



**LEGEND**

- Roads
- Waterbody

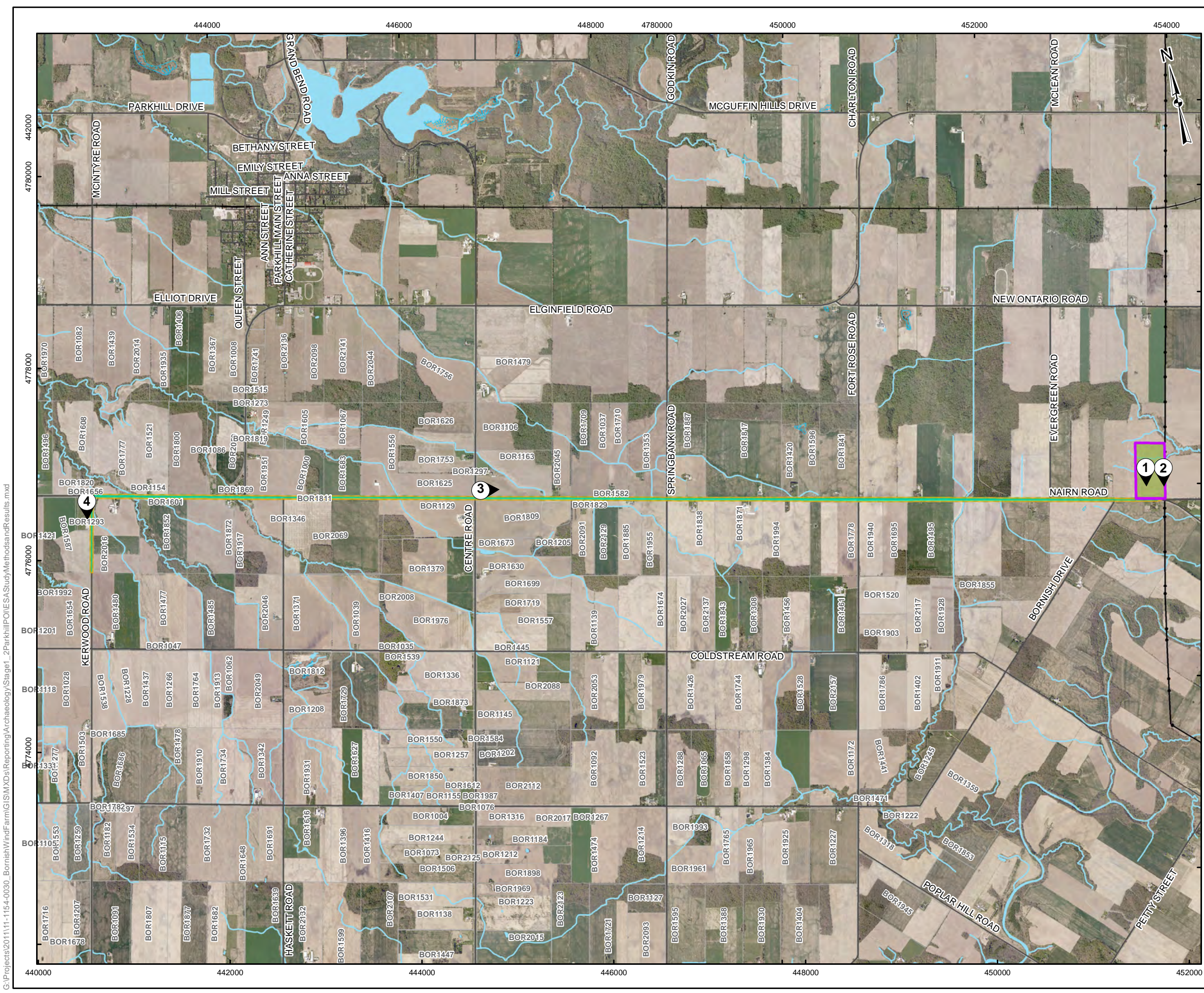
**REFERENCE**

Base Data - MNR NRVIS, obtained 2004  
 Produced by Golder Associates Ltd under licence from  
 Ontario Ministry of Natural Resources, © Queens Printer 2008  
 Projection: Transverse Mercator Datum: NAD 83 Coordinate System: UTM Zone 17N



PROJECT STAGE 1-2 ARCHAEOLOGICAL ASSESSMENT				
PARKHILL POINT OF INTERCONNECT				
MIDDLESEX COUNTY, ONTARIO				
TITLE				
KEY PLAN				
 Mississauga, Ontario	PROJECT NO.	11-1154-0030	SCALE AS SHOWN	REV. 0.0
	DESIGN	JMC	6 Feb. 2012	<b>FIGURE: 6-A</b>
	CHECK	JM	5 Apr. 2012	
	REVIEW	JM	5 Apr. 2012	

G:\Projects\2011\11-1154-0030\_BornishWindFarm\GIS\MXDs\Reporting\Archaeology\Stage1\_2ParkhillPOI\KeyPlan.mxd



**LEGEND**

- 1 Photographic Direction
- Roads
- Railways
- Utility Line
- Watercourse
- Proposed Point of Interconnection Study Area
- Transmission Line ROW
- Stage 2 Pedestrian Survey at 5m Intervals
- Disturbed Area - Not Assessed
- Waterbody
- Wetland
- Land Parcel

**REFERENCE**

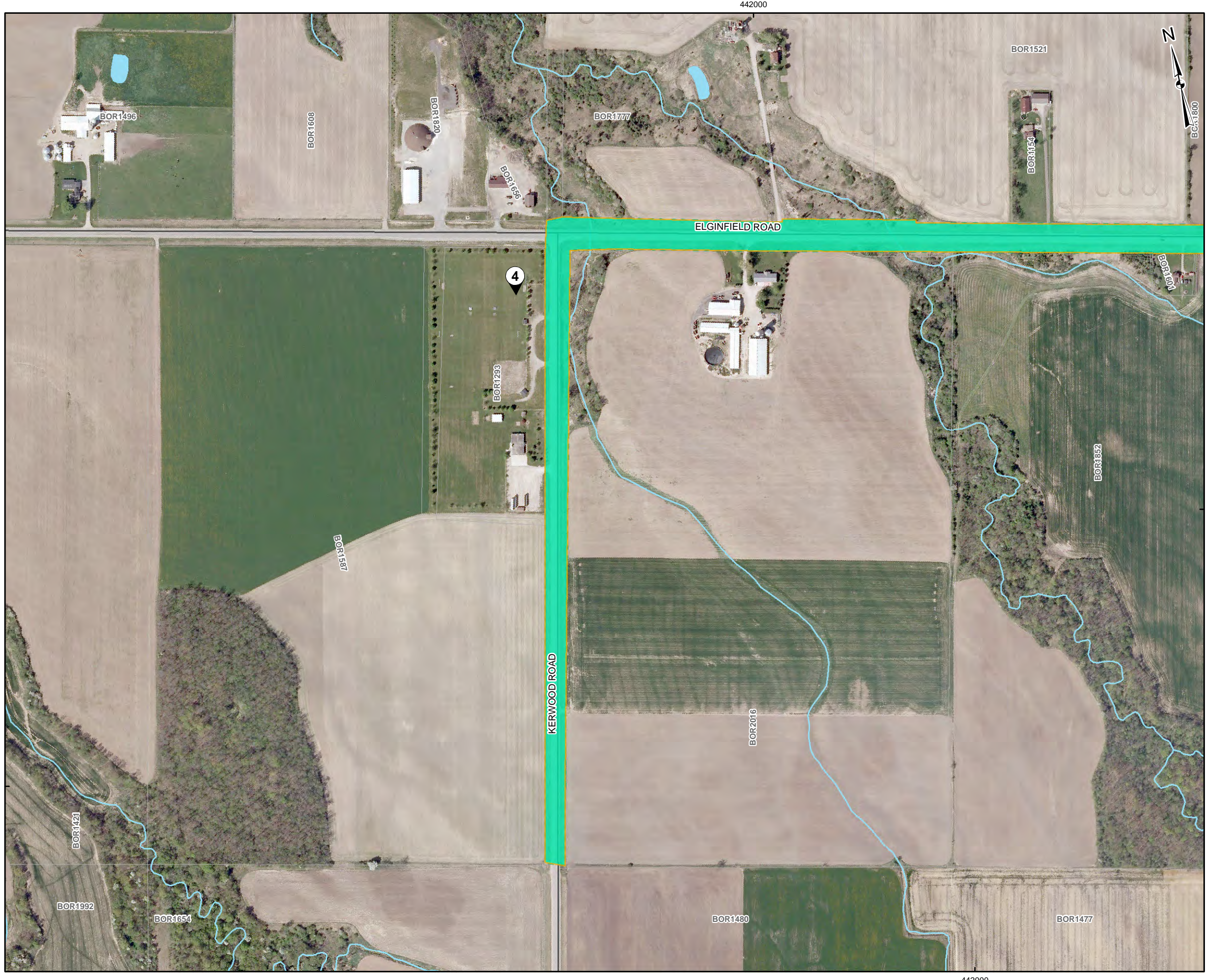
Base Data - MNR LIO, obtained 2009  
 Produced by Golder Associates Ltd under licence from  
 Ontario Ministry of Natural Resources, © Queens Printer 2012  
 Projection: Transverse Mercator Datum: NAD 83 Coordinate System: UTM Zone 17

500 250 0 500 1,000 1,500  
 SCALE 1:40,000 METRES

PROJECT STAGE 1-2 ARCHAEOLOGICAL ASSESSMENT, PARKHILL POINT OF INTERCONNECT, MIDDLESEX COUNTY, ONTARIO			
TITLE STAGE 2 SURVEY METHODS OVERVIEW			
	PROJECT NO. 11-1154-0030	SCALE AS SHOWN	REV. 0.0
	DESIGN JMC	1 Feb. 2012	
	GIS BC	5 Apr. 2012	
	CHECK SM	5 Apr. 2012	
	REVIEW JM	5 Apr. 2012	
			<b>FIGURE: 6-B</b>

G:\Projects\2011\11-1154-0030\_BornishWindFarm\GIS\MapDocs\Reporting\Archaeology\Stage1\_2\ParkhillPOI\ESAS\StudyMethodsandResults.mxd

G:\Projects\2011\11-1154-0030\_BornishWindFarm\GIS\MapXDocs\Reporting\Archaeology\Stage1\_2\ParkhillPOI\ESAS\StudyMethods\_01.mxd



**LEGEND**

- Photographic Direction
- Roads
- Railways
- Utility Line
- Watercourse
- Proposed Point of Interconnection Study Area
- Transmission Line ROW
- Scatter Size Area
- Stage 2 Pedestrian Survey at 5m Intervals
- Disturbed Area - Not Assessed
- Waterbody
- Wetland
- Land Parcel

**REFERENCE**

Base Data - MNR LIO, obtained 2009  
 Produced by Golder Associates Ltd under licence from  
 Ontario Ministry of Natural Resources, © Queens Printer 2012  
 Projection: Transverse Mercator Datum: NAD 83 Coordinate System: UTM Zone 17

100 50 0 100 200  
 METRES  
 SCALE 1:5,000

PROJECT STAGE 1-2 ARCHAEOLOGICAL ASSESSMENT, PARKHILL POINT OF INTERCONNECT, MIDDLESEX COUNTY, ONTARIO			
TITLE STAGE 2 SURVEY METHODS			
 Golder Associates Mississauga, Ontario	PROJECT NO.	11-1154-0030	SCALE AS SHOWN
	DESIGN	JMC	1 Feb. 2012
	GIS	JMC	2 Feb. 2012
	CHECK	SM	2 Feb. 2012
	REVIEW	JM	2 Feb. 2012
			REV. 0.0

FIGURE: 6-01